

STATE OF HAWAI'I
UNIVERSITY OF HAWAI'I
UNIVERSITY OF HAWAI'I AT MĀNOA
OFFICE OF THE PROVOST
SCHOOL OF TRAVEL INDUSTRY MANAGEMENT
Organization Chart
Chart I

DEPARTMENT TOTAL:	PERM	TEMP
General Funds:	18.00	--

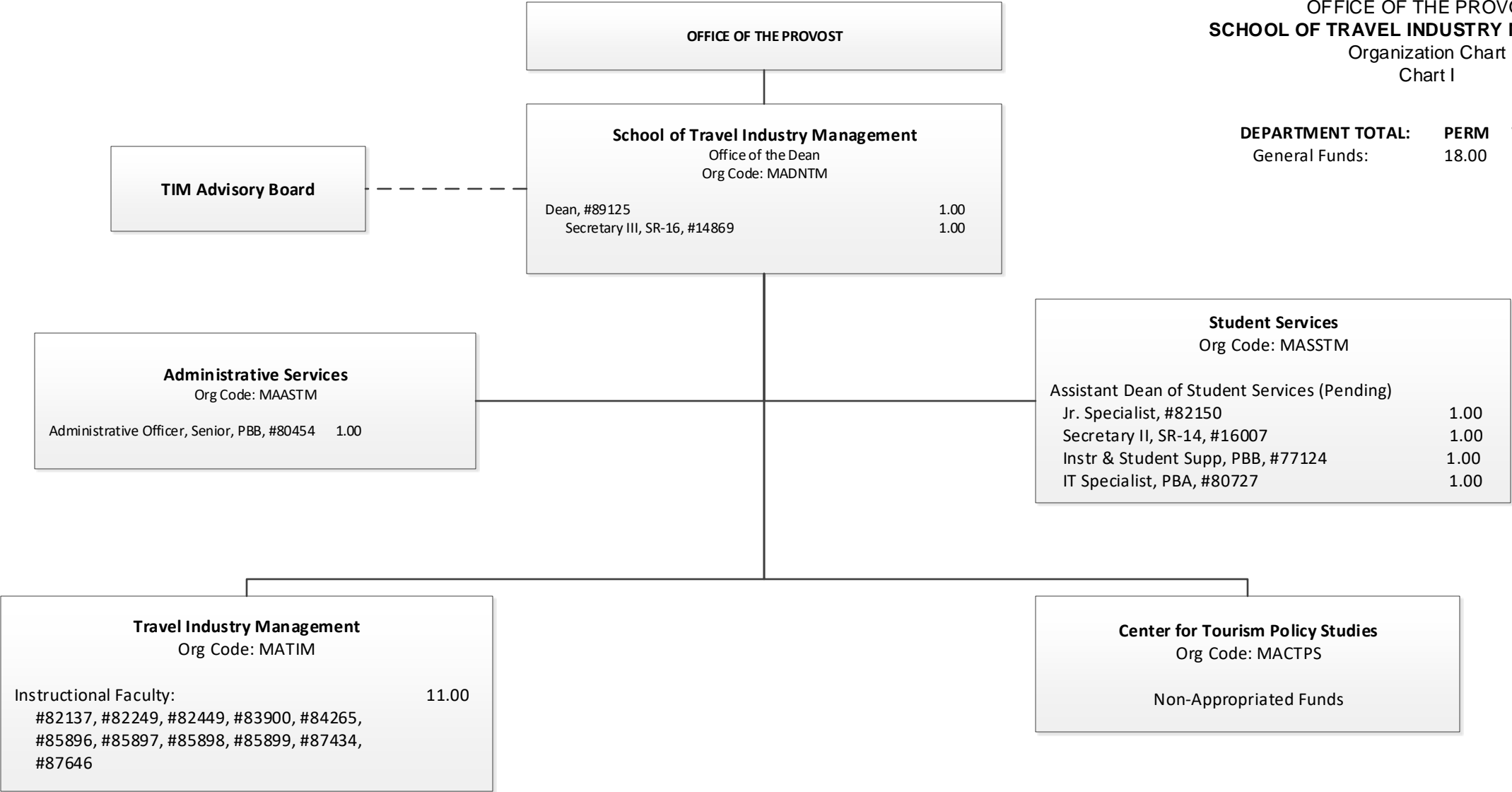


CHART TOTAL:	PERM	TEMP
General Funds:	18.00	--