

CHART UPDATED

DATE: July 1, 2019

STATE OF HAWAII
UNIVERSITY OF HAWAII
UNIVERSITY OF HAWAII AT MĀNOA
**COLLEGE OF TROPICAL AGRICULTURE AND
HUMAN RESOURCES**
ORGANIZATION CHART
CHART I

DEPARTMENT TOTAL:	PERM	TEMP
General Funds:	247.29	1.00

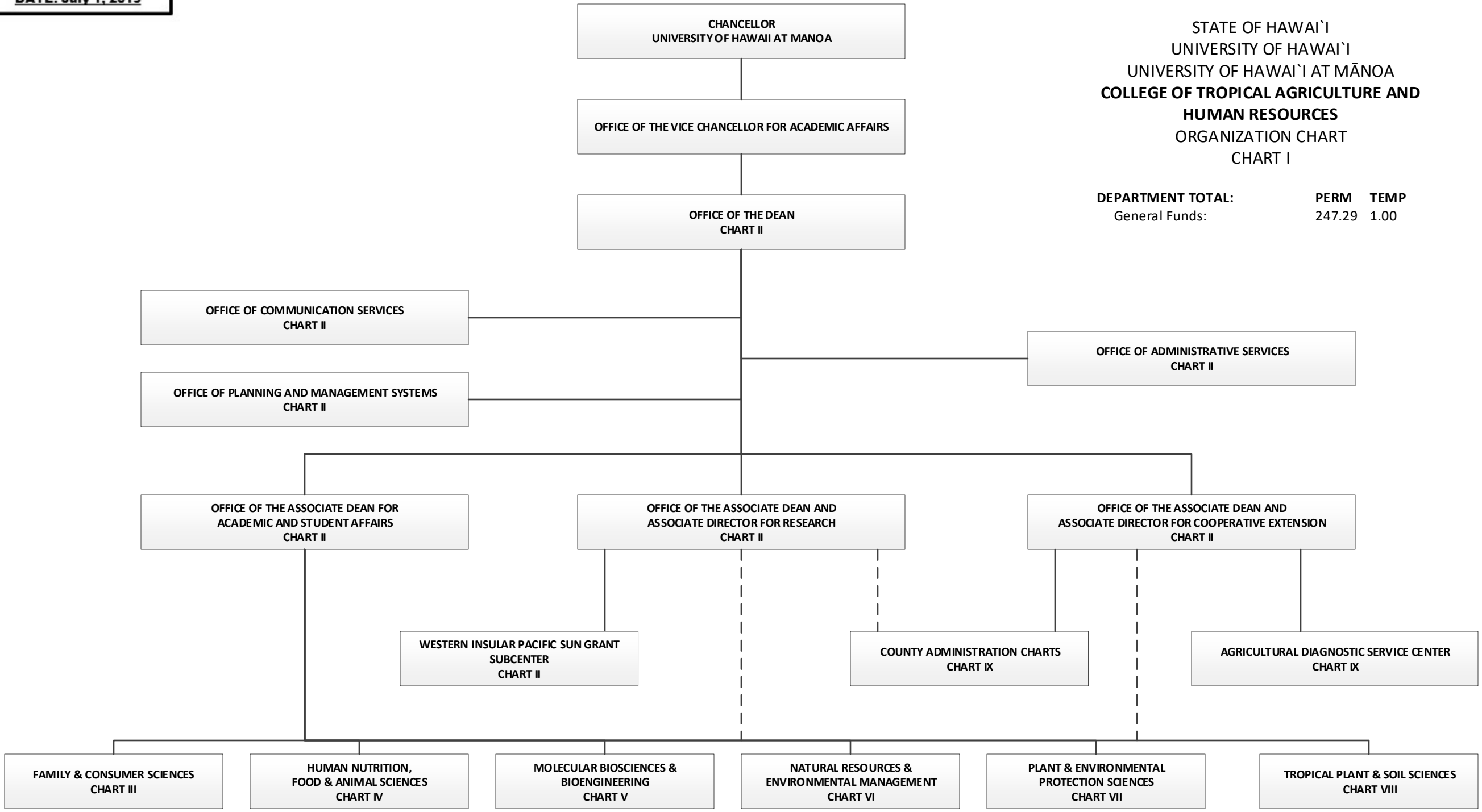


CHART UPDATED
DATE: July 1, 2019

STATE OF HAWAII
 UNIVERSITY OF HAWAII
 UNIVERSITY OF HAWAII AT MĀNOA
 COLLEGE OF TROPICAL AGRICULTURE AND
 HUMAN RESOURCES
 ORGANIZATION CHART

OFFICE OF THE DEAN
CHART II

OFFICE OF THE VICE CHANCELLOR FOR ACADEMIC AFFAIRS

OFFICE OF THE DEAN
Org Code: MADNTR

Dean, #89020	1.00
Special Director, International Programs, ISM11, #84910	1.00
Secretary II, SR-14, #22932	1.00
Secretary IV, SR-18, #21484	1.00

OFFICE OF COMMUNICATION SERVICES
Org Code: MACSTR

Public Information Specialist, PBB, #81470	1.00
Editor, PBB, #81391	1.00
Media Design & Production, PBA, #78721	1.00
Office Assistant IV, SR-10, #18008	1.00

OFFICE OF PLANNING AND MANAGEMENT SYSTEMS
Org Code: MAPMTR

Program Manager, PBC, #80797	1.00
IT Manager, PBC, #80939	1.00
IT Specialist, PBB, #81362, #81711	2.00
IT Specialist, PBA, #77925, #81954, #80037	3.00
Budget Analyst, PBB, #80210	1.00
Environ & Health Safety Specialist, PBB, #80980	1.00
Educational Specialist, PBA, #79548	1.00

OFFICE OF ADMINISTRATIVE SERVICES
Org Code: MAADTR

Director, #89022	1.00
Fiscal	
Fiscal Manager, PBC, #81677	1.00
Fiscal Specialist, PBB, #77924, #78719, #80295, #80323	4.00
Admin & Fiscal Support Specialist, PBA, #78812, #79084, #79085, #80000, #80249, #80310	6.00
Personnel	
Human Resources Manager, PBB, #80949	1.00
Human Resources Specialist, PBA, #80212, #81498	2.00

OFFICE OF THE ASSOCIATE DEAN FOR ACADEMIC AND STUDENT AFFAIRS
Org Code: MAAATR

Associate Dean for Academic Affairs, #89047	1.00
Secretary III, SR-16, #00505	1.00
Educational Specialist, PBB, #80320	1.00
Educational Specialist, PBB, #80586	1.00
Student Services Specialist, PBB, #81694	1.00
Academic Advisor, PBB, #80293, #80385, #80391	3.00
Instruct & Student Support, PBA, #79587	1.00
Instructional & Student Support, PBA #81827	1.00

OFFICE OF THE ASSOCIATE DEAN AND ASSOCIATE DIRECTOR FOR RESEARCH
Org Code: MARSTR

Associate Dean for Academic Affairs, #89124	1.00
Secretary III, SR-16, #00425	1.00

OFFICE OF THE ASSOCIATE DEAN AND ASSOCIATE DIRECTOR FOR COOPERATIVE EXTENSION
Org Code: MAEXTR

Associate Dean for Academic Affairs, #89069	1.00
Secretary III, SR-16, #00789	1.00

WESTERN INSULAR PACIFIC SUN GRANT
Org Code: MAIPSG

Director, (appointment from CTAHR faculty)

CHART TOTAL: **PERM**
 General Funds: 47.00

CHART UPDATED
DATE: July 1, 2019

STATE OF HAWAII
 UNIVERSITY OF HAWAII
 UNIVERSITY OF HAWAII AT MĀNOA
 COLLEGE OF TROPICAL AGRICULTURE AND
 HUMAN RESOURCES
 ORGANIZATION CHART

DEPARTMENT OF FAMILY AND CONSUMER SCIENCES
 CHART III

OFFICE OF THE ASSOCIATE DEAN FOR
 ACADEMIC AND STUDENT AFFAIRS

DEPARTMENT OF FAMILY AND CONSUMER SCIENCES
 Org Code: MAFCS

Chairperson (Appointment from among faculty positions)
 Secretary II, SR-14, #22849 1.00
 Office Assistant III, SR-08, #21208 1.00
 Instr & Student Support Specialist, PBA, #80784 1.00
 Administrative & Fiscal Support Specialist, PBA, #78061 1.00

Graduate Assistants 2.50
 #88134, #88219, #88410, #88565, #88576

Faculty Positions 16.28

Oahu
 Instructional Faculty:
 #82094, #82866, #82869, #83525, #83553, #83690,
 #83765, #83816, #84316, #84500, #84914, #86034, #86066, #86274
 Specialist Type Faculty:
 #85421
 Agent Type Faculty:
 #82074, #84685

Maui
 Agent Type Faculty:
 #84120, #84147

Hawaii
 Agent Type Faculty:
 #82313, #82505

4-H OFFICE
 Org Code: MA4H

Specialist Type Faculty: 1.00
 #83968

CENTER ON THE FAMILY
 Org Code: MACOF

Faculty Position 2.64
 Specialist, #85550
 Specialist Type Faculty:
 #82181, #82238, #84145, #84325, #84477
 Research Type Faculty:
 #83399, #84585
 Secretary II, SR-14, #46186 1.00
 Administrative & Fiscal Support Spec, PBA, #81073 1.00

CHART TOTAL: **PERM** **TEMP**
 General Funds: 28.42 --

CHART UPDATED
DATE: July 1, 2019

STATE OF HAWAII
 UNIVERSITY OF HAWAII
 UNIVERSITY OF HAWAII AT MĀNOA
 COLLEGE OF TROPICAL AGRICULTURE AND
 HUMAN RESOURCES
 ORGANIZATION CHART

**DEPARTMENT OF HUMAN NUTRITION, FOOD AND
 ANIMAL SCIENCES**
 CHART IV

OFFICE OF THE ASSOCIATE DEAN FOR
 ACADEMIC AND STUDENT AFFAIRS

DEPARTMENT OF HUMAN NUTRITION, FOOD AND ANIMAL SCIENCES	
Org Code: MAHFAS	
Chairperson (Appointed from among faculty position)	
Secretary II, SR-14, #00400	1.00
Office Assistant III, SR-08, #900569	1.00
Administrative & Fiscal Support Specialist, PBA, #80386	1.00
Research Associate, PBB, #80410	1.00
Research Associate, PBA, #77092	1.00
Graduate Assistants	3.00
#88088, #88165, #88303, #88594, #88643, #86249, #85388T	0.50T
Faculty Positions	15.16
Oahu	
Specialist Type Faculty:	
#82107, #83017, #83510, #83830, #84323, #84640	
Research Type Faculty:	
#83633, #84496, #85576	
Instructional Faculty:	
#82175, #82248, #82865, #83012, #83267, #83811, #84306, #84449, #84454, #84512, #84919, #84920, #85556, #87552	
Agent Type Faculty:	
#84439	
Maui	
Agent Type Faculty:	
#82639, #83728	
Hawaii	
Specialist Type Faculty:	
#82090	
Agent Type Faculty:	
#83152, #84158, #84276, #84297	
Kauai	
Agent Type Faculty:	
#82363	

CHART TOTAL:	PERM	TEMP
General Funds:	23.16	0.50T

CHART UPDATED
DATE: July 1, 2019

STATE OF HAWAI'I
 UNIVERSITY OF HAWAI'I
 UNIVERSITY OF HAWAI'I AT MĀNOA
 COLLEGE OF TROPICAL AGRICULTURE AND
 HUMAN RESOURCES
 ORGANIZATION CHART

**DEPARTMENT OF MOLECULAR BIOSCIENCES AND
 BIOENGINEERING**
 CHART V

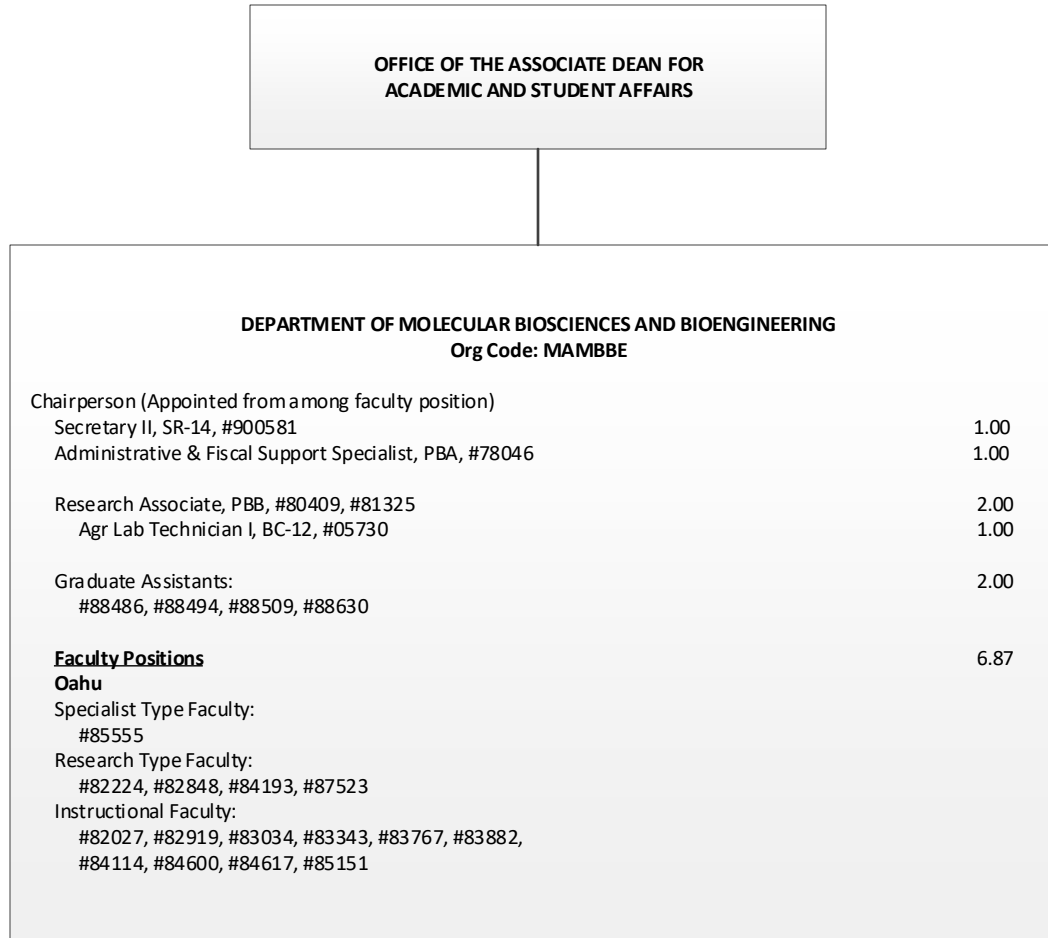


CHART TOTAL:	PERM	TEMP
General Funds:	13.87	--

CHART UPDATED
DATE: July 1, 2019

STATE OF HAWAI'I
 UNIVERSITY OF HAWAI'I
 UNIVERSITY OF HAWAI'I AT MĀNOA
 COLLEGE OF TROPICAL AGRICULTURE AND
 HUMAN RESOURCES
 ORGANIZATION CHART

**DEPARTMENT OF NATURAL RESOURCES AND
 ENVIRONMENTAL MANAGEMENT**
 CHART VI

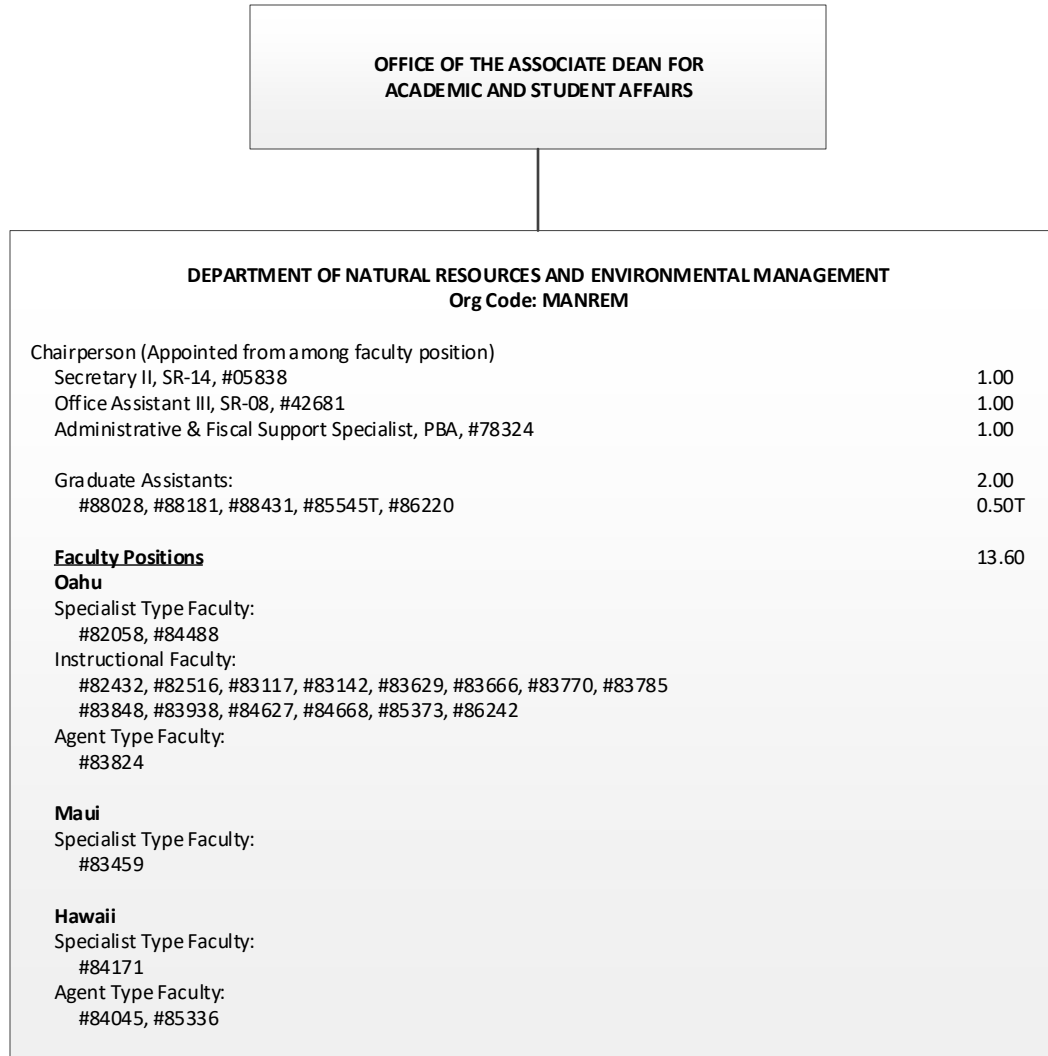


CHART TOTAL:	PERM	TEMP
General Funds:	18.60	0.50T

CHART UPDATED
DATE: July 1, 2019

OFFICE OF THE ASSOCIATE DEAN FOR
 ACADEMIC AND STUDENT AFFAIRS

STATE OF HAWAI'I
 UNIVERSITY OF HAWAI'I
 UNIVERSITY OF HAWAI'I AT MĀNOA
 COLLEGE OF TROPICAL AGRICULTURE AND
 HUMAN RESOURCES
 ORGANIZATION CHART

DEPARTMENT OF PLANT AND ENVIRONMENTAL PROTECTION SCIENCES
 Org Code: MAPEPS

Chairperson (Appointed from among faculty position)	
Secretary II, SR-14, #07477	1.00
Office Assistant III, SR-08, #00794, #15509	2.00
Administrative & Fiscal Support Specialist, PBA, #77864	1.00
Educational Specialist, PBB, #80250	1.00
Research Associate, PBB, #80388, #81178, #81311	3.00
Research Associate, PBA, #81313	1.00
Agr Research Technician IV, SR-14, #24270	1.00
Agr Research Technician III, SR-11, #24269	1.00
Graduate Assistants: #84932, #88241	1.00
Faculty Positions	8.83
Oahu	
Specialist Type Faculty: #83320, #83513, #84006, #84321, #84911	
Research Type Faculty: #82047, #82139, #83067, #83184, #83260, #83742 #83884, #84041, #85547	
Instructional Faculty: #82976, #84138, #85510	
Agent Type Faculty: #84489	
Maui	
Agent Type Faculty: #85530	
Hawaii	
Agent Type Faculty: #82196, #83462, #85538	
Kauai	
Instructional Type Faculty: #85505	
Agent Type Faculty: #85410	

DEPARTMENT OF PLANT AND ENVIRONMENTAL
 PROTECTION SCIENCES
 CHART VII

CHART TOTAL:	PERM	TEMP
General Funds:	20.83	--

CHART UPDATED
DATE: July 1, 2019

OFFICE OF THE ASSOCIATE DEAN FOR
 ACADEMIC AND STUDENT AFFAIRS

STATE OF HAWAI'I
 UNIVERSITY OF HAWAI'I
 UNIVERSITY OF HAWAI'I AT MĀNOA
 COLLEGE OF TROPICAL AGRICULTURE AND
 HUMAN RESOURCES
 ORGANIZATION CHART

DEPARTMENT OF TROPICAL PLANT AND SOIL SCIENCES
 Org Code: MATPSS

DEPARTMENT OF TROPICAL PLANT AND SOIL SCIENCES
 CHART VIII

Chairperson (Appointed from among faculty position)	
Secretary II, SR-14, #00793	1.00
Office Assistant IV, SR-10, #00399	1.00
Administrative & Fiscal Support Specialist, PBA, #77795	1.00
Research Associate, PBB, #80270	1.00
Agr Research Technician V, SR-16, #11019	1.00
Agr Research Technician IV, SR-14, #00397, #05392, #15512	3.00
Educational Specialist, PBA, #81739	1.00
Graduate Assistants: #88171, #88423	1.00
Faculty Positions	21.41
Oahu	
Specialist Type Faculty: #82598, #82985, #83159, #83304, #83388, #83682, #84501, #84916	
Research Type Faculty: #82023, #82464, #82699, #82747, #83515, #83740, #84420, #84481, #85877, #86275	
Instructional Type Faculty: #83286	
Agent Type Faculty: #82881, #84070, #85435, #85460, #85528	
Maui	
Agent Type Faculty: #85392, #85404, #85423, #85459, #85477, #87584	
Hawaii	
Research Type Faculty: #84067, #84354	
Agent Type Faculty: #82485, #82951, #84648, #85440	
Kauai	
Agent Type Faculty: #85371, #85387	

CHART TOTAL:	PERM	TEMP
General Funds:	31.41	--

CHART UPDATED

DATE: July 1, 2019

STATE OF HAWAI'I
UNIVERSITY OF HAWAI'I
UNIVERSITY OF HAWAI'I AT MĀNOA
COLLEGE OF TROPICAL AGRICULTURE AND
HUMAN RESOURCES
ORGANIZATION CHART

COUNTY ADMINISTRATION
CHART IX

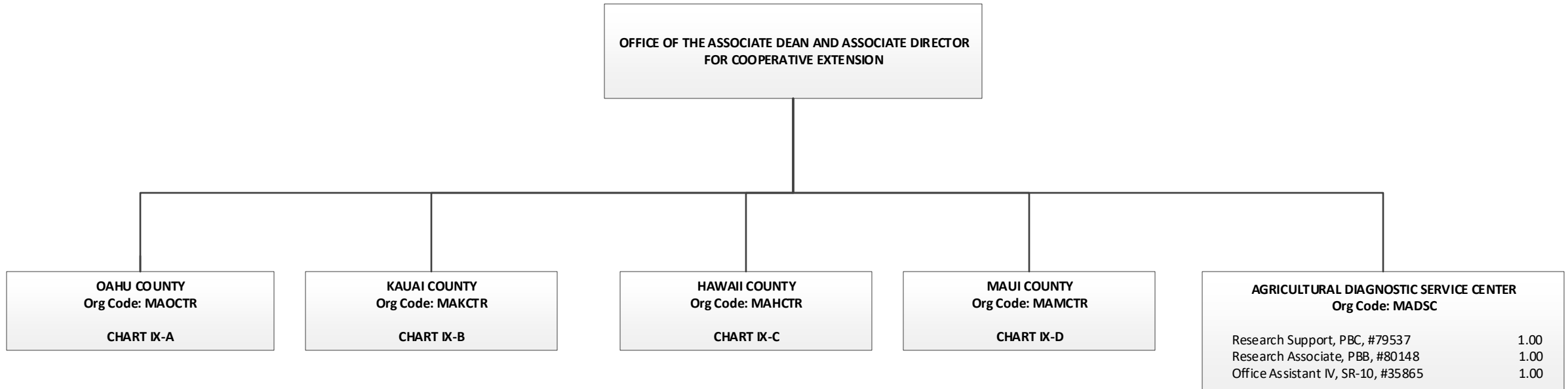


CHART TOTAL:	PERM	TEMP
General Funds:	3.00	--

CHART UPDATED

DATE: July 1, 2019

STATE OF HAWAI'I
UNIVERSITY OF HAWAI'I
UNIVERSITY OF HAWAI'I AT MĀNOA
COLLEGE OF TROPICAL AGRICULTURE AND
HUMAN RESOURCES
ORGANIZATION CHART

KAUAI COUNTY
CHART IX-B

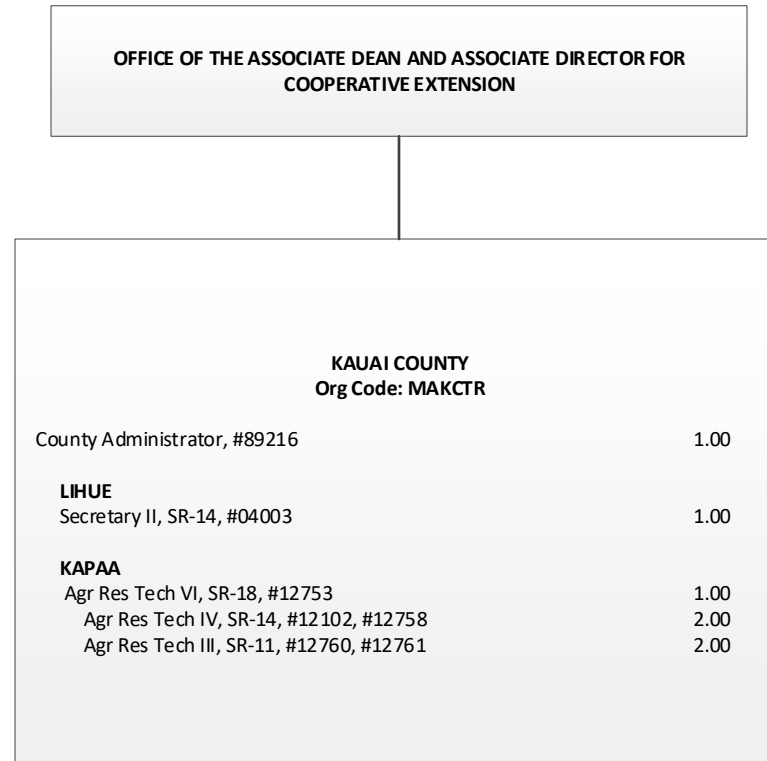


CHART TOTAL:	PERM	TEMP
General Funds:	7.00	--

CHART UPDATED
DATE: July 1, 2019

OFFICE OF THE ASSOCIATE DEAN AND ASSOCIATE DIRECTOR FOR COOPERATIVE
EXTENSION

HAWAII COUNTY
Org Code: MAHCTR

County Administrator, #89213	1.00
KOMOHANA	
Secretary II, SR-14, #13871	1.00
Office Assistant III, SR-08, #00791	1.00
KONA	
Office Assistant IV, SR-10, #900583	1.00
KAMUELA	
Office Assistant IV, SR-10, #00799	1.00

HAWAII COUNTY TECHNICAL SUPPORT
Org Code: MAHTTR

Educational Specialist, PBB, #80311	1.00
EAST HAWAII	
Agr Res Tech VI, SR-18, #12099	1.00
WAIAKEA	
Agr Res Tech V, SR-16, #14166	1.00
Agr Res Tech IV, SR-14, #12096, #12098, #14168, #15497	4.00
Agr Res Tech III, SR-11, #17602	1.00
Building Maintenance Worker I, BC-09, #12095	1.00
VOLCANO	
Agr Res Tech V, SR-16, #13206	1.00
Agr Res Tech IV, SR-14, #12097	1.00
MALAMA-KI	
WEST HAWAII	
Agr Res Tech VI, SR-18, #13530	1.00
MEALANI	
Agr Res Tech V, SR-16, #12094	1.00
Agr Res Tech IV, SR-14, #12100	1.00
Agr Res Tech III, SR-11, #44867, #44868	2.00
HAMAKUA	
KONA	
Agr Res Tech V, SR-16, #00409	1.00
Agr Res Tech IV, SR-14, #22912	1.00

STATE OF HAWAI'I
UNIVERSITY OF HAWAI'I
UNIVERSITY OF HAWAI'I AT MĀNOA
COLLEGE OF TROPICAL AGRICULTURE AND
HUMAN RESOURCES
ORGANIZATION CHART

HAWAII COUNTY
CHART IX-C

CHART TOTAL:	PERM	TEMP
General Funds:	23.00	--

CHART UPDATED
DATE: July 1, 2019

STATE OF HAWAI'I
 UNIVERSITY OF HAWAI'I
 UNIVERSITY OF HAWAI'I AT MĀNOA
 COLLEGE OF TROPICAL AGRICULTURE AND
 HUMAN RESOURCES
 ORGANIZATION CHART

MAUI COUNTY
 CHART IX-D

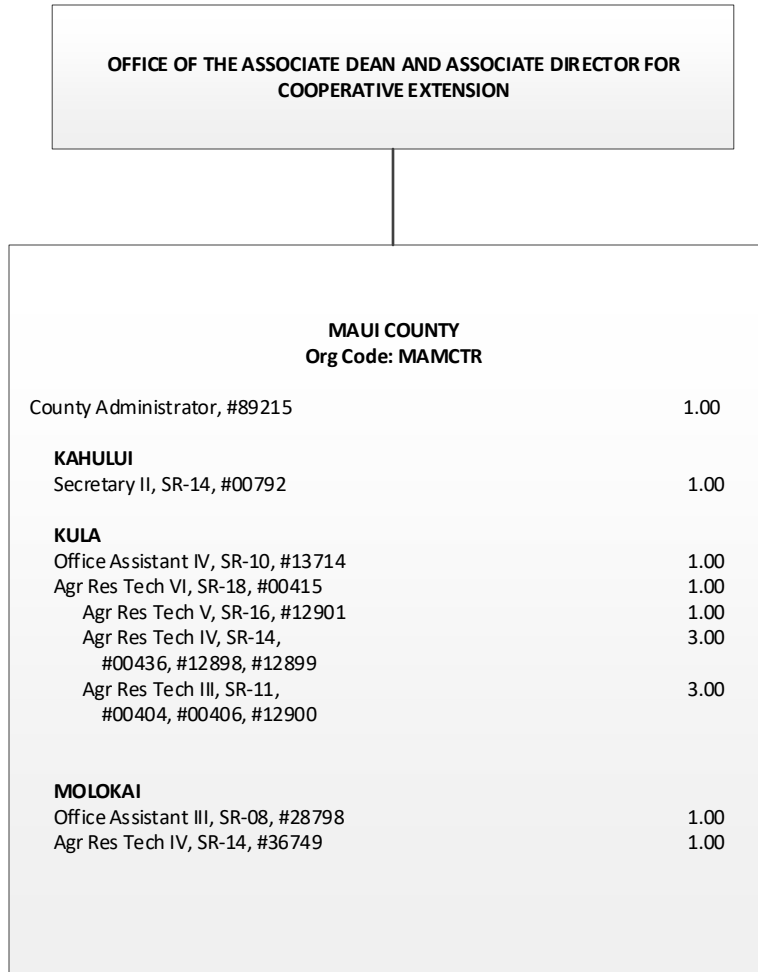


CHART TOTAL:	PERM	TEMP
General Funds:	13.00	--