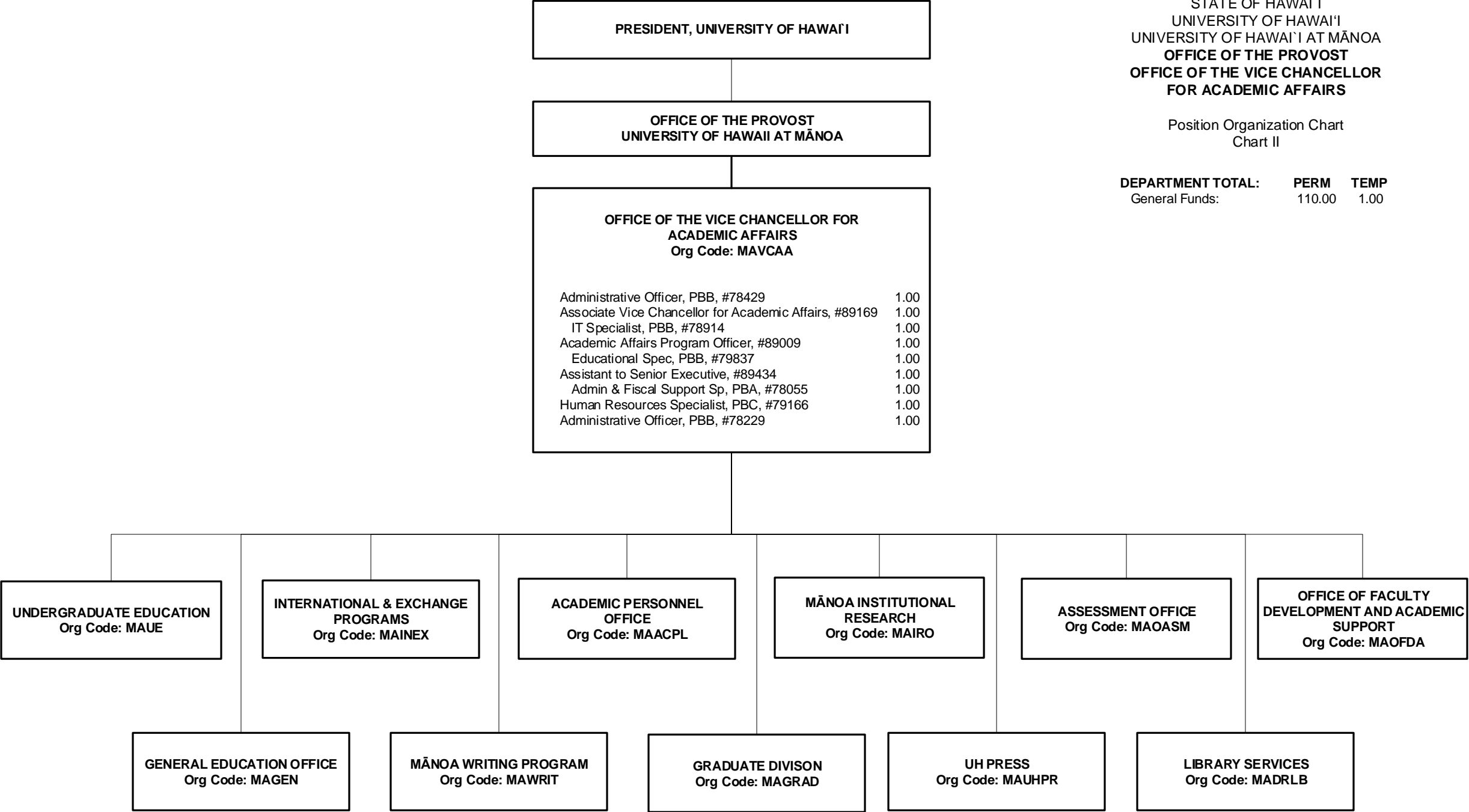


STATE OF HAWAI'I  
UNIVERSITY OF HAWAI'I  
UNIVERSITY OF HAWAI'I AT MĀNOA  
OFFICE OF THE PROVOST  
OFFICE OF THE VICE CHANCELLOR  
FOR ACADEMIC AFFAIRS

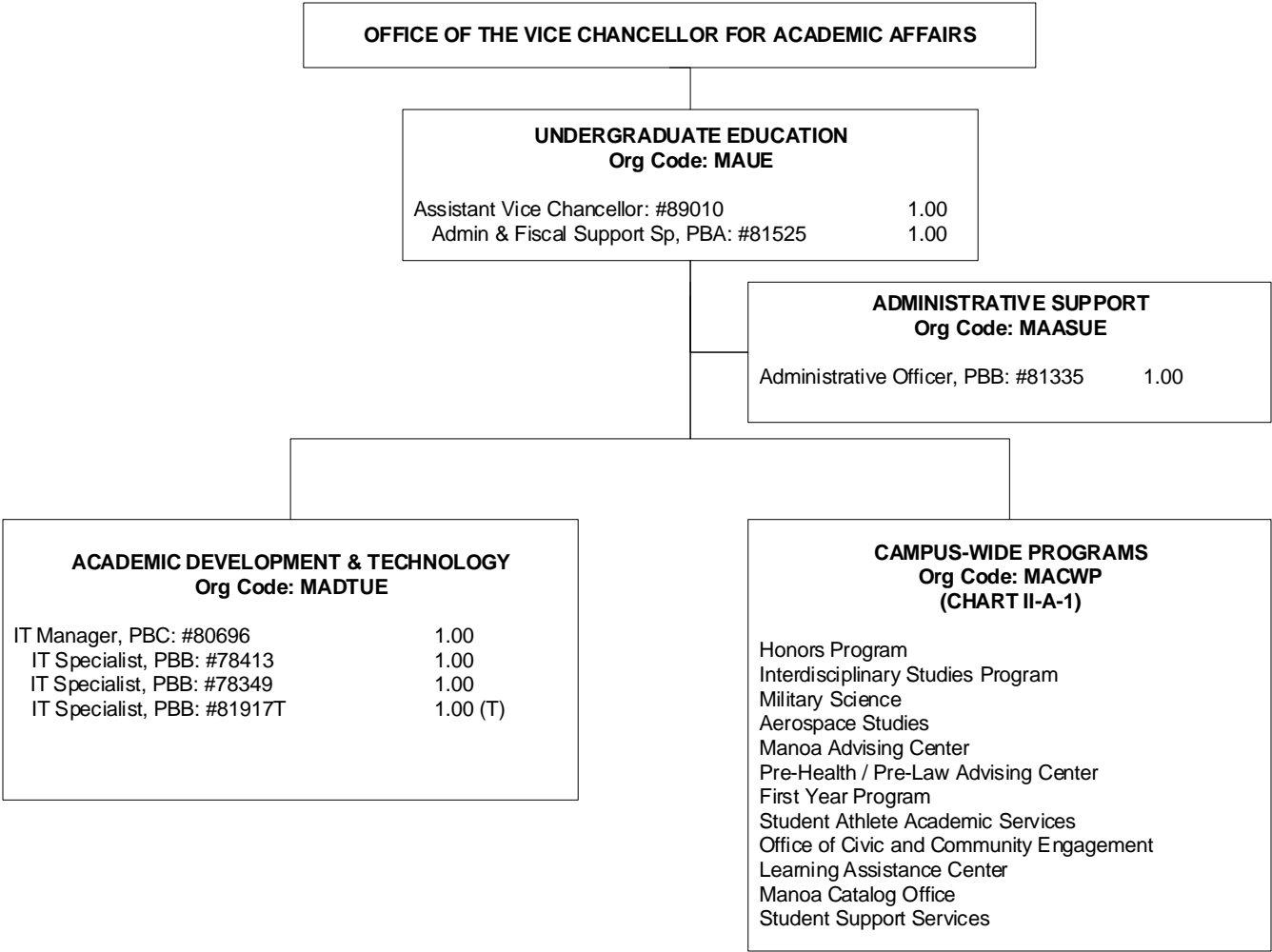
Position Organization Chart  
Chart II

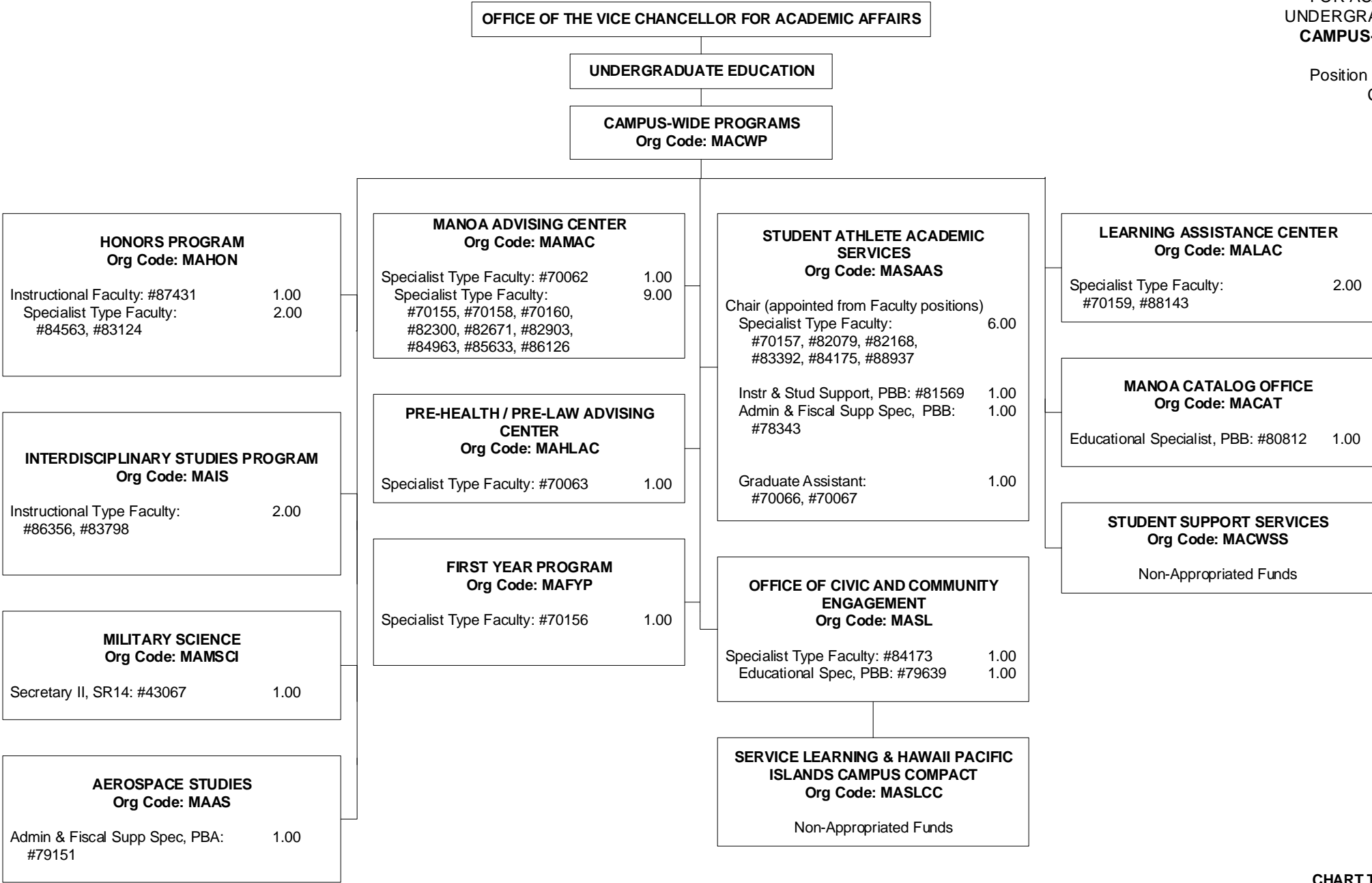
DEPARTMENT TOTAL:	PERM	TEMP
General Funds:	110.00	1.00



STATE OF HAWAI'I  
UNIVERSITY OF HAWAI'I  
UNIVERSITY OF HAWAI'I AT MĀNOA  
OFFICE OF THE VICE CHANCELLOR  
FOR ACADEMIC AFFAIRS  
UNDERGRADUATE EDUCATION

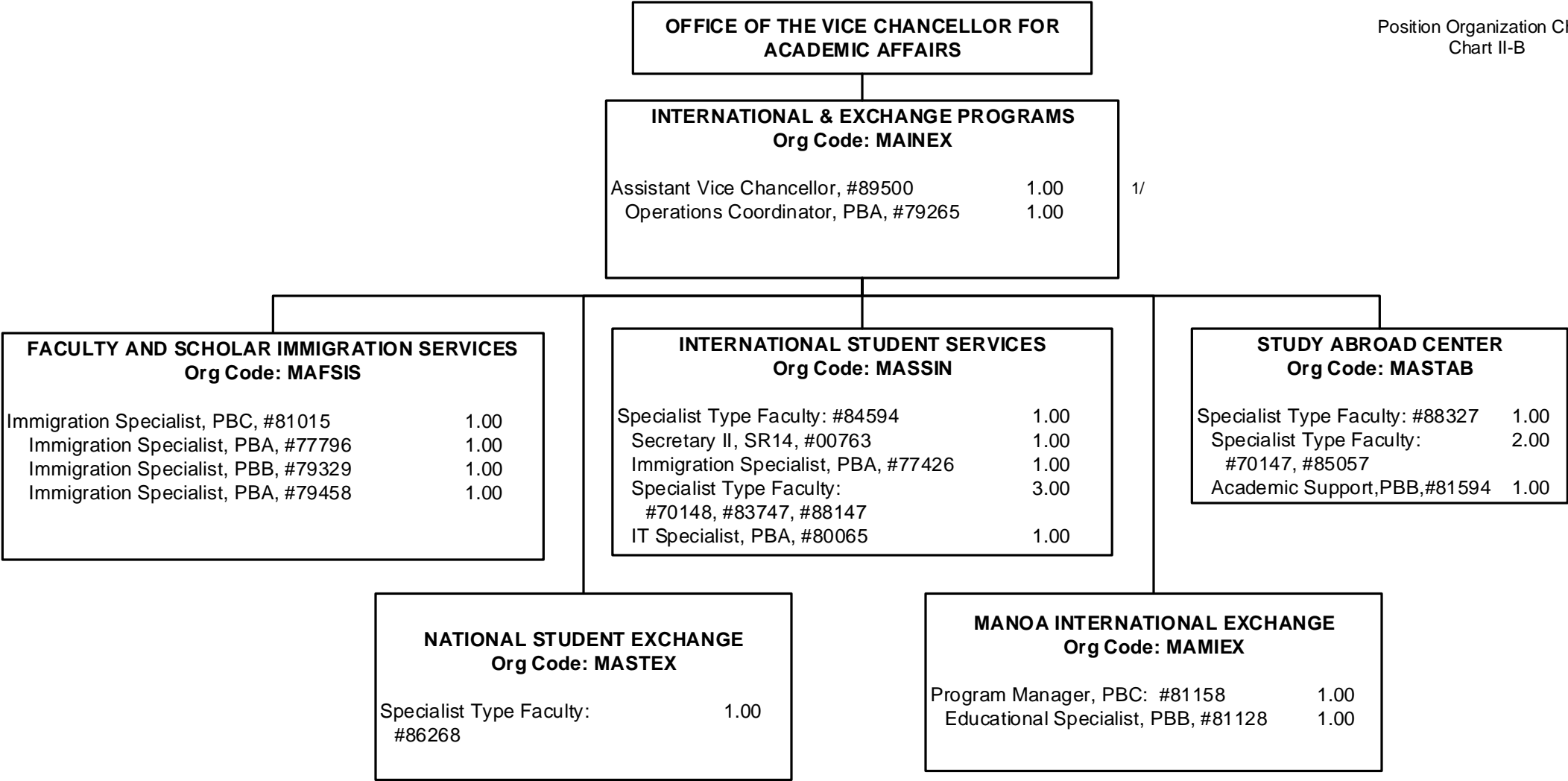
Position Organization Chart  
Chart II-A





STATE OF HAWAI'I  
UNIVERSITY OF HAWAI'I  
UNIVERSITY OF HAWAI'I AT MĀNOA  
OFFICE OF THE VICE CHANCELLOR  
FOR ACADEMIC AFFAIRS  
INTERNATIONAL & EXCHANGE  
PROGRAMS

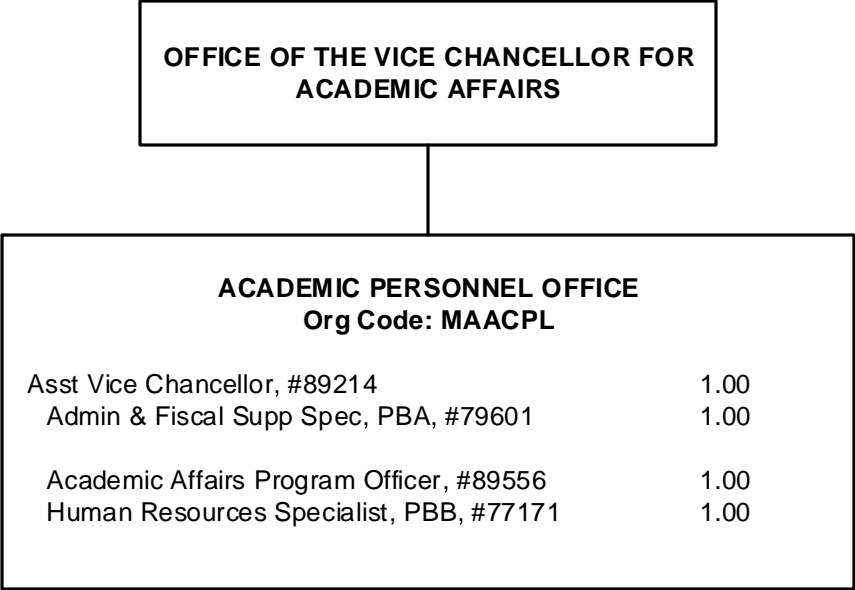
Position Organization Chart  
Chart II-B



1/ Asst Vice Chancellor of International & Exchange Programs appointed from a Dean position.

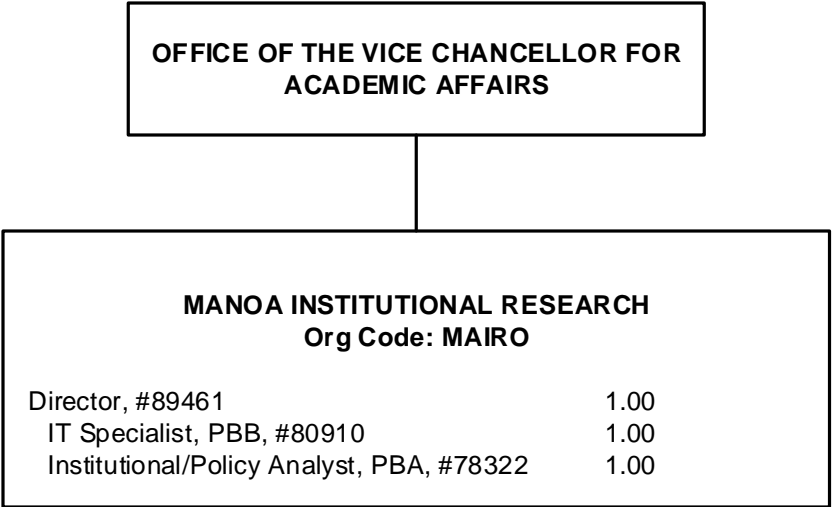
STATE OF HAWAI'I  
UNIVERSITY OF HAWAI'I  
UNIVERSITY OF HAWAI'I AT MĀNOA  
OFFICE OF THE VICE CHANCELLOR  
FOR ACADEMIC AFFAIRS  
ACADEMIC PERSONNEL OFFICE

Position Organization Chart  
Chart II-C



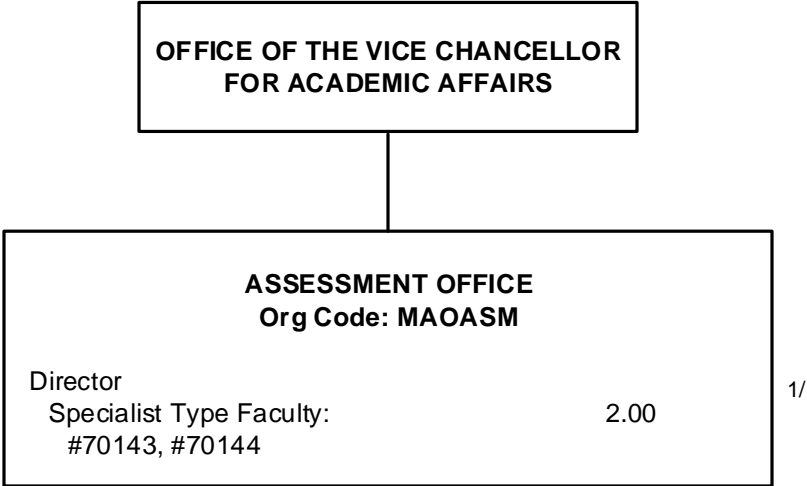
STATE OF HAWAI'I  
UNIVERSITY OF HAWAI'I  
UNIVERSITY OF HAWAI'I AT MĀNOA  
OFFICE OF THE VICE CHANCELLOR  
FOR ACADEMIC AFFAIRS  
**MĀNOA INSTITUTIONAL RESEARCH**

Position Organization Chart  
Chart II-D

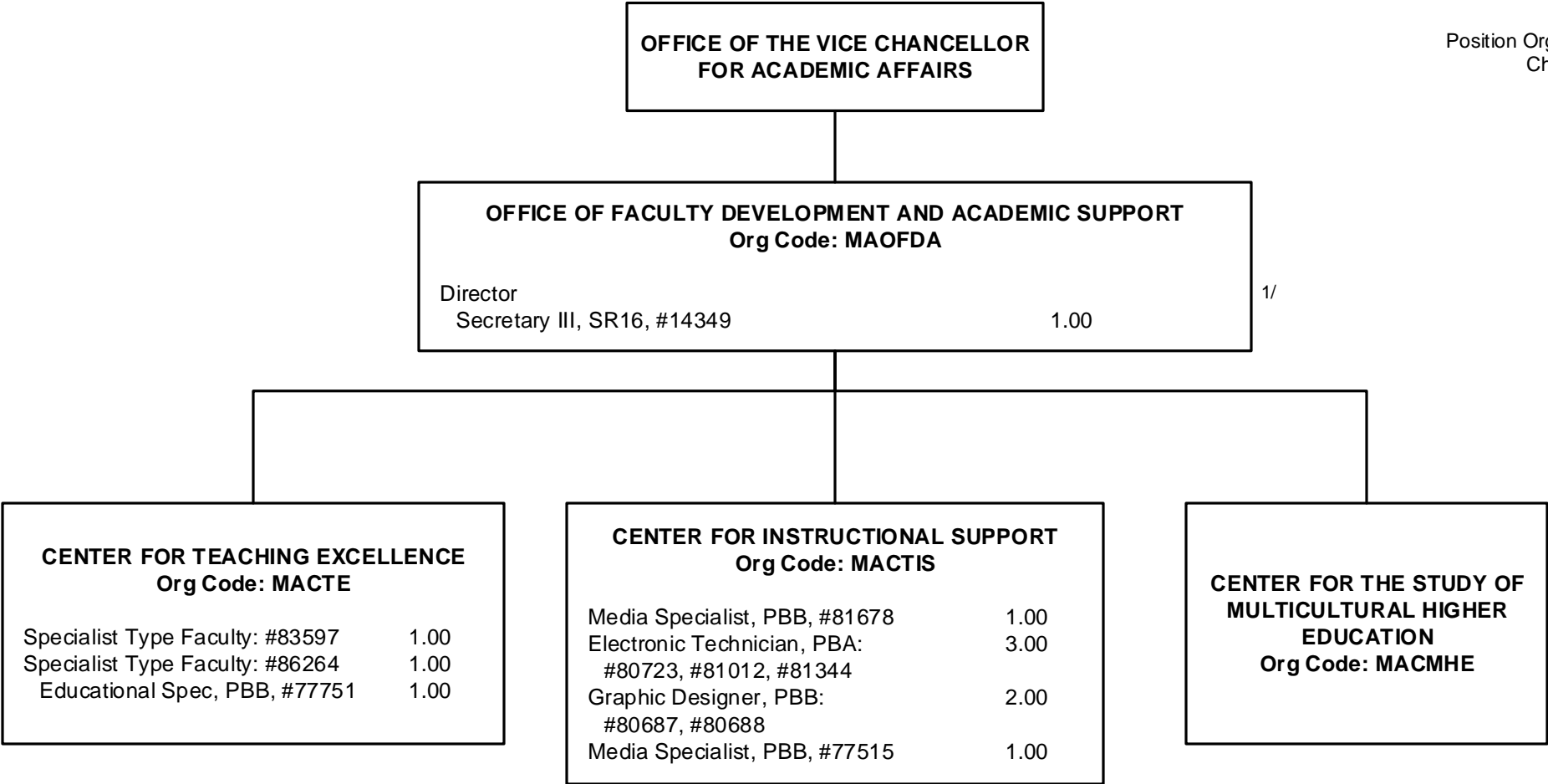


STATE OF HAWAI'I  
UNIVERSITY OF HAWAI'I  
UNIVERSITY OF HAWAI'I AT MĀNOA  
OFFICE OF THE VICE CHANCELLOR  
FOR ACADEMIC AFFAIRS  
ASSESSMENT OFFICE

Position Organization Chart  
Chart II-E



1/ Director appointed from a faculty position to oversee Assessment operations.

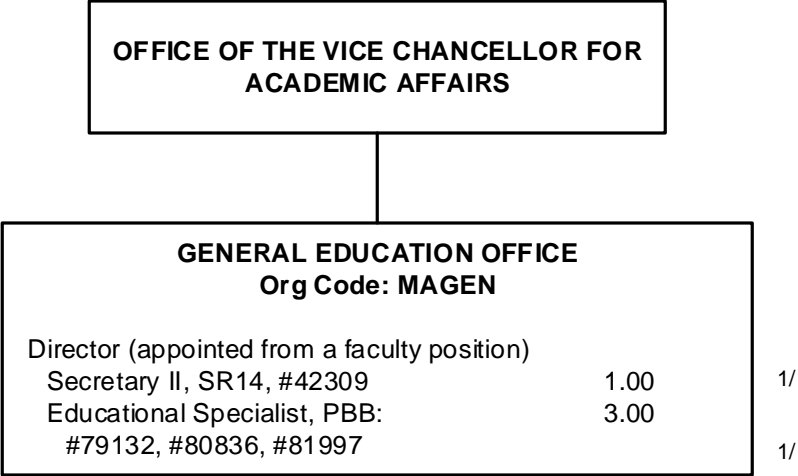


1/ Director appointed from a faculty position to oversee OFDAS operations.



STATE OF HAWAI'I  
UNIVERSITY OF HAWAI'I  
UNIVERSITY OF HAWAI'I AT MĀNOA  
OFFICE OF THE VICE CHANCELLOR  
FOR ACADEMIC AFFAIRS  
**GENERAL EDUCATION OFFICE**

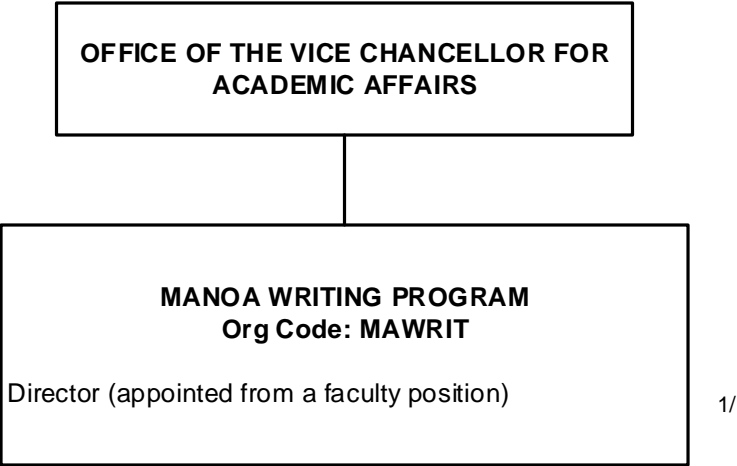
Position Organization Chart  
Chart II-G



1/ Secretary II, #42309 and Educ Spec, #81997 partially support the Mānoa Writing Program.

STATE OF HAWAI'I  
UNIVERSITY OF HAWAI'I  
UNIVERSITY OF HAWAI'I AT MĀNOA  
OFFICE OF THE VICE CHANCELLOR  
FOR ACADEMIC AFFAIRS  
MĀNOA WRITING PROGRAM

Position Organization Chart  
Chart II-H



1/ Positions in the General Education Office partially support this Office: Secretary II, SR14, #42309 and Educational Specialists, PBB, #80836, #81997. Primary supervisor is General Education Office Director.

