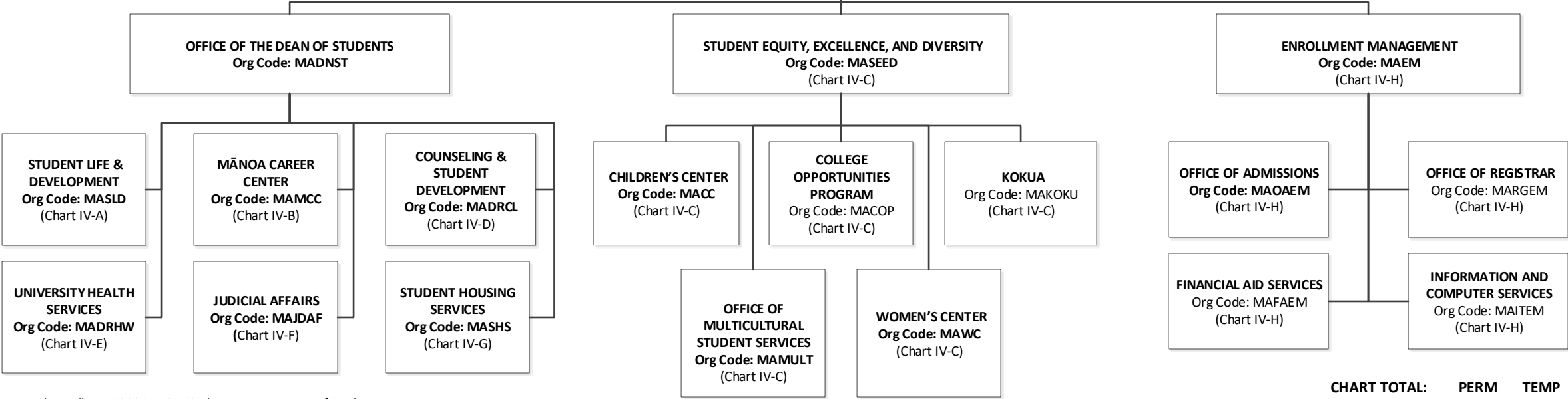
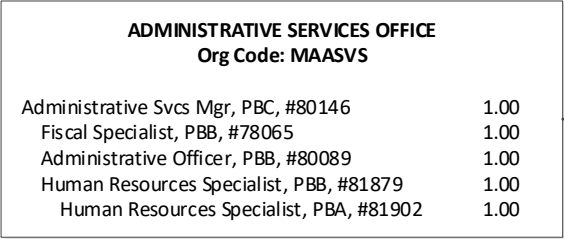


STATE OF HAWAI‘I  
UNIVERSITY OF HAWAI‘I  
UNIVERSITY OF HAWAI‘I AT MĀNOA  
OFFICE OF THE PROVOST  
OFFICE OF THE VICE CHANCELLOR FOR STUDENTS

ORGANIZATION CHART

Chart IV

DEPARTMENT TOTAL:	PERM	TEMP
General Funds:	182.00	4.00
Special Funds (B):	99.00	--
Revolving Funds (W):	18.00	--



1/ Associate Vice Chancellor, #89309 in OVCS also serves as Dean of Students  
2/ Assistant Vice Chancellor, #89133 in OVCS also serves as Enrollment Management and Director  
3/ Assistant Vice Chancellor, #89479 in OVCS also serves as Director of SEED

CHART TOTAL:	PERM	TEMP
General Funds:	16.00	--

STATE OF HAWAI'I  
UNIVERSITY OF HAWAI'I  
UNIVERSITY OF HAWAI'I AT MĀNOA  
OFFICE OF THE VICE CHANCELLOR FOR STUDENTS  
OFFICE OF THE DEAN OF STUDENTS  
STUDENT LIFE & DEVELOPMENT

ORGANIZATIONAL CHART  
CHART IV-A

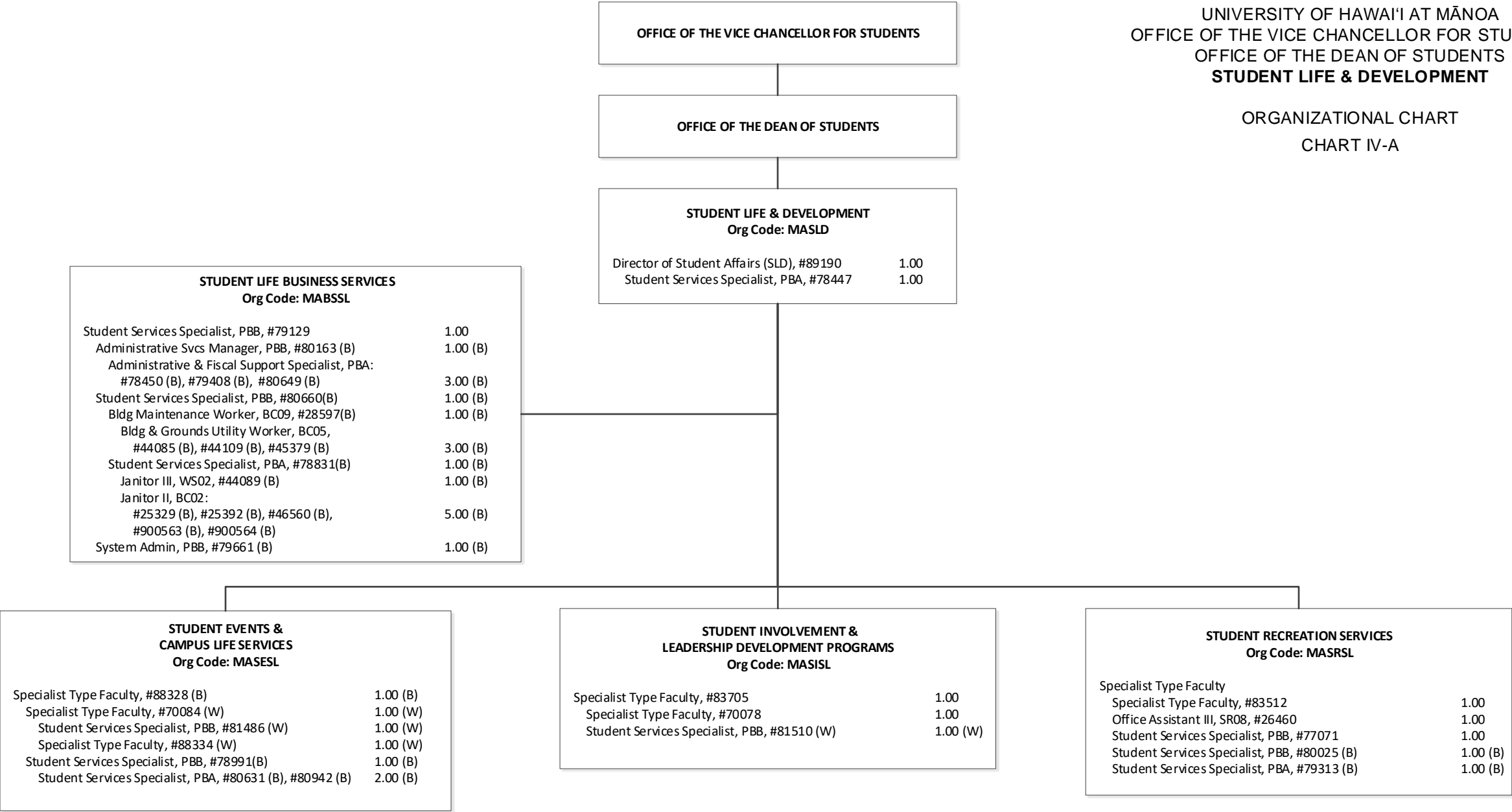
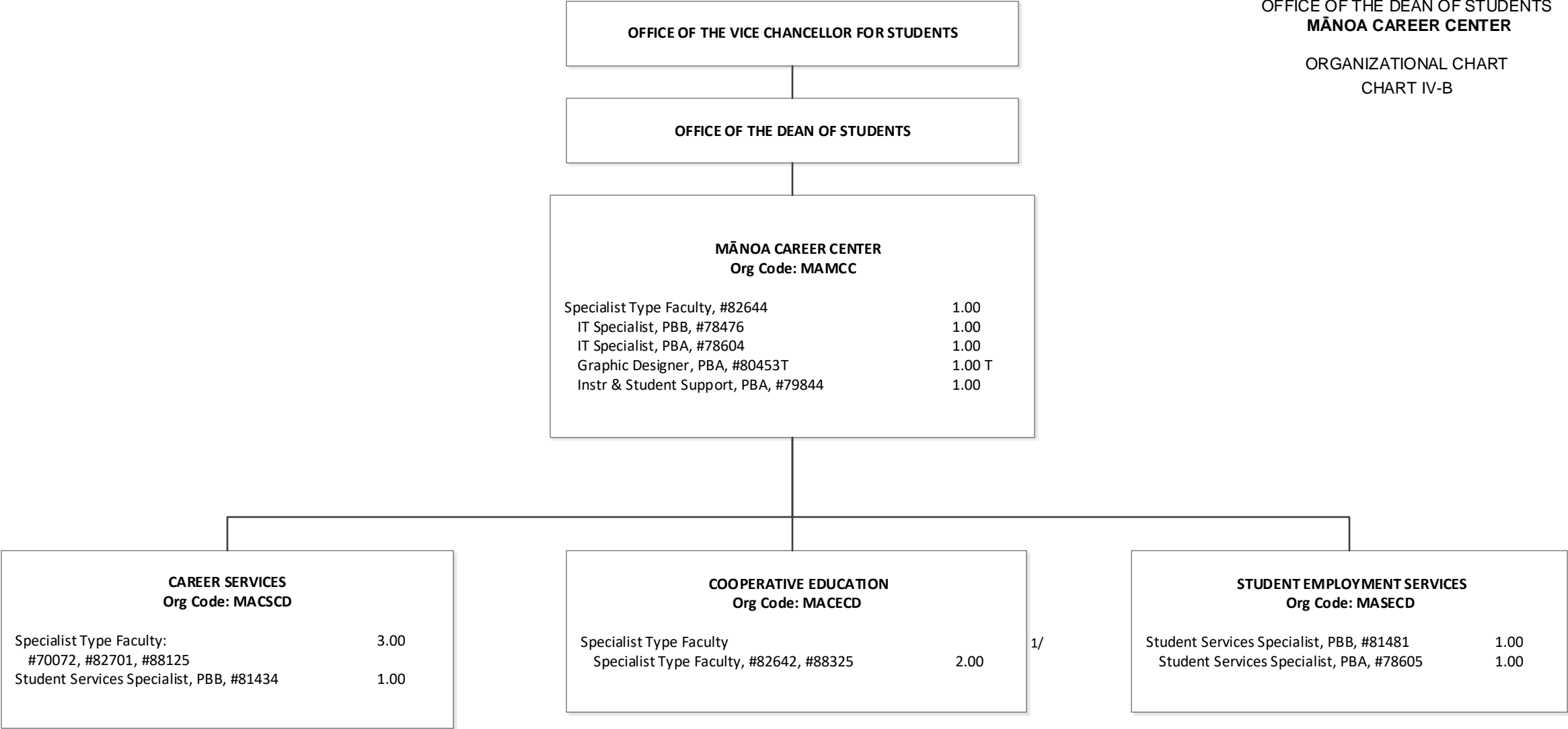


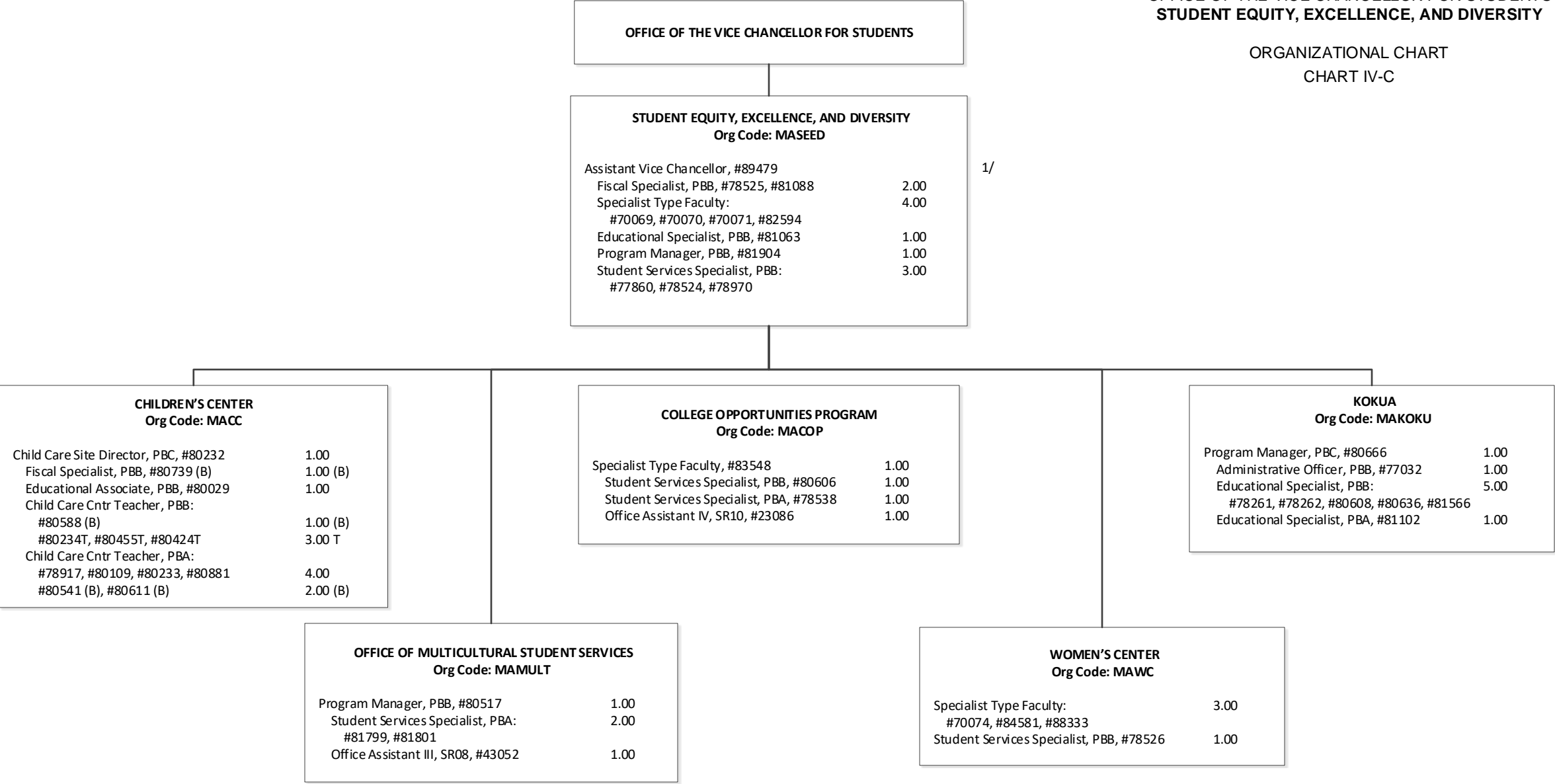
CHART TOTAL:	PERM	TEMP
General Funds:	8.00	--
Special Funds (B):	23.00	--
Revolving Funds (W):	4.00	--



1/ Specialist Type Faculty, #88117 in Cooperative Education swept into Chancellor’s Pool 11/7/17

STATE OF HAWAI'I  
UNIVERSITY OF HAWAI'I  
UNIVERSITY OF HAWAI'I AT MĀNOA  
OFFICE OF THE VICE CHANCELLOR FOR STUDENTS  
STUDENT EQUITY, EXCELLENCE, AND DIVERSITY

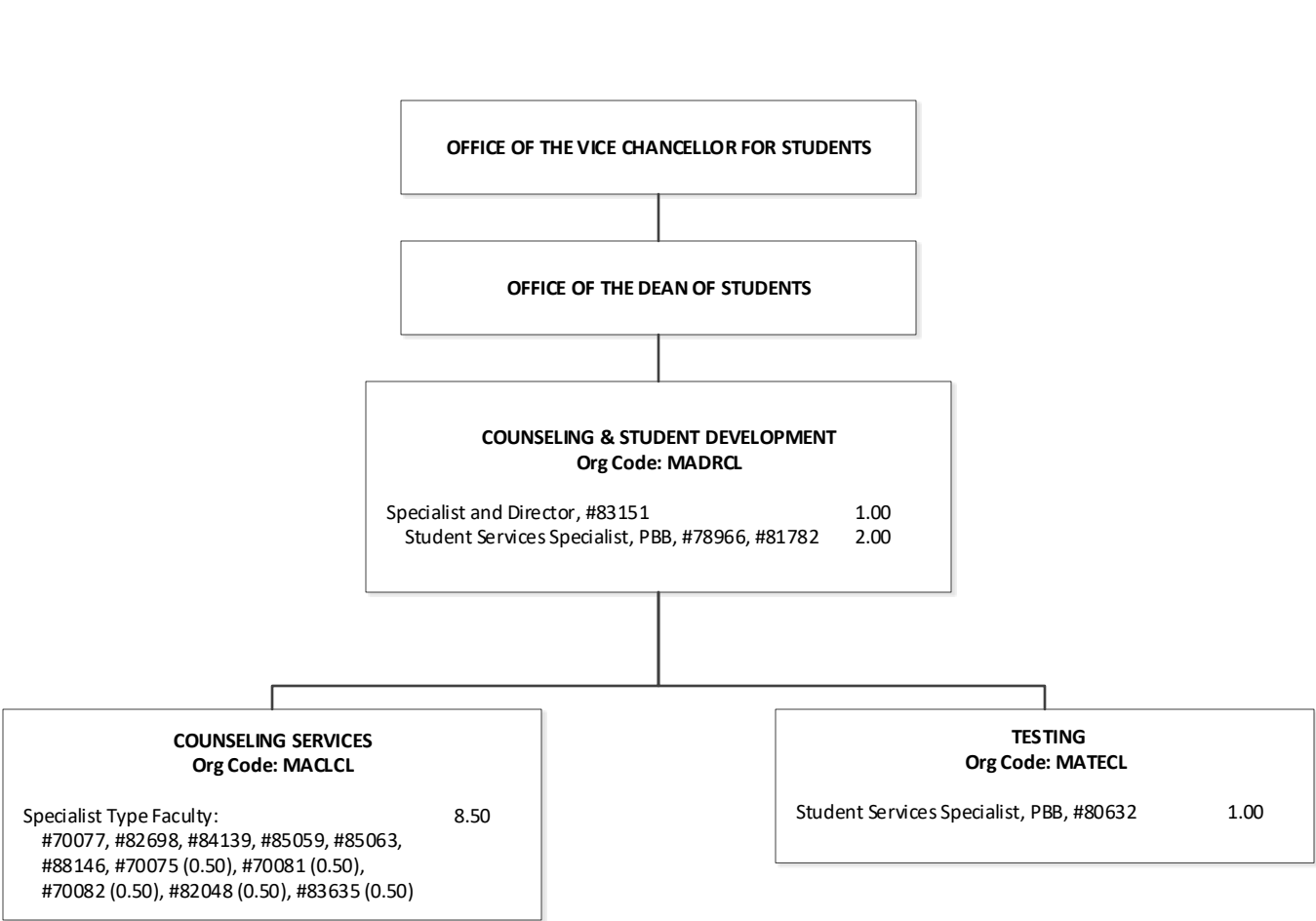
ORGANIZATIONAL CHART  
CHART IV-C



1/ Assistant Vice Chancellor, #89479 in Student, Equity, Excellence and Diversity position count reflected on Chart IV

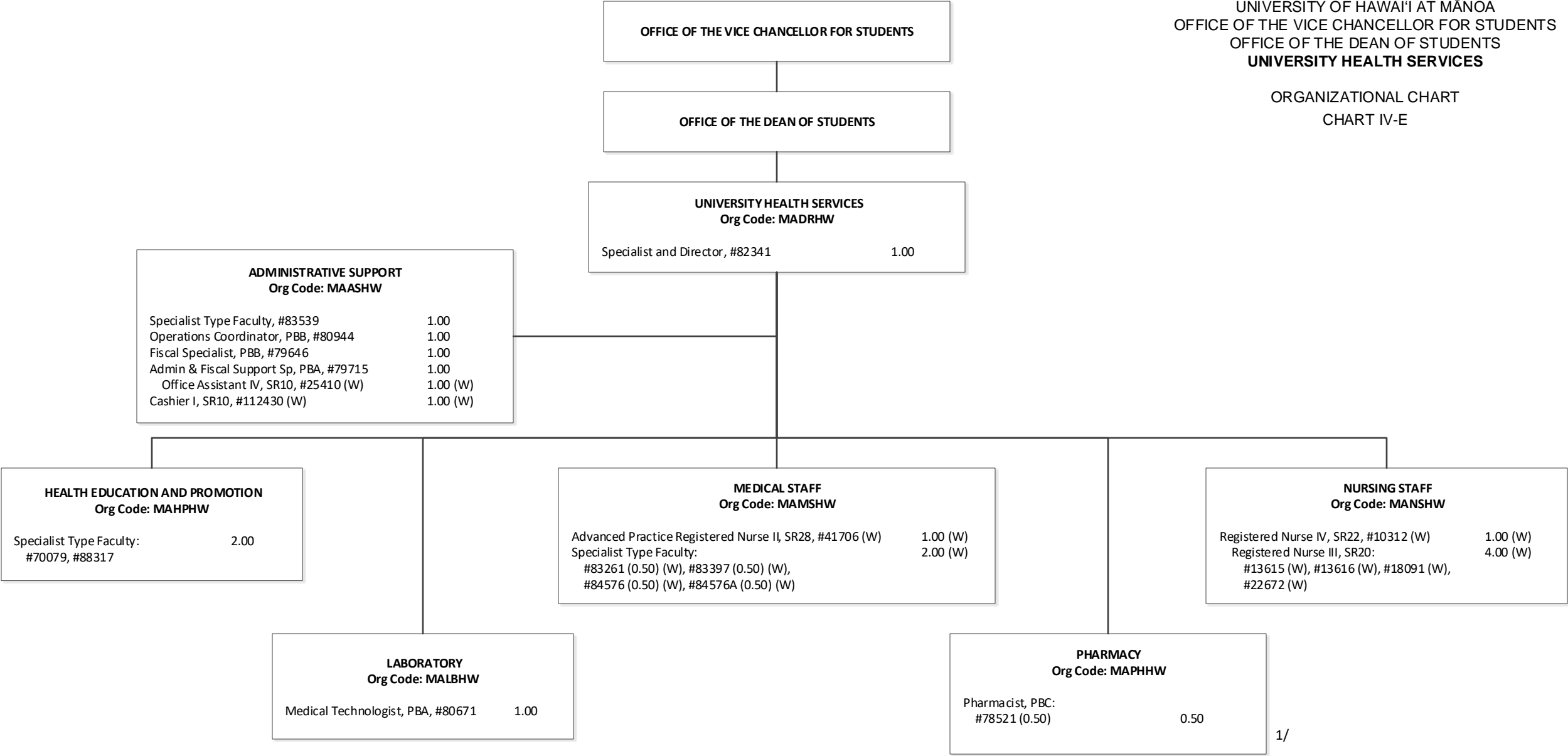
Abolished position #70073 (1.00 FTE)

CHART TOTAL:	PERM	TEMP
General Funds:	38.00	3.00
Special Funds (B):	4.00	- -



STATE OF HAWAI'I  
UNIVERSITY OF HAWAI'I  
UNIVERSITY OF HAWAI'I AT MĀNOA  
OFFICE OF THE VICE CHANCELLOR FOR STUDENTS  
OFFICE OF THE DEAN OF STUDENTS  
**COUNSELING & STUDENT DEVELOPMENT**  
  
ORGANIZATIONAL CHART  
CHART IV-D

STATE OF HAWAI'I  
UNIVERSITY OF HAWAI'I  
UNIVERSITY OF HAWAI'I AT MĀNOA  
OFFICE OF THE VICE CHANCELLOR FOR STUDENTS  
OFFICE OF THE DEAN OF STUDENTS  
**UNIVERSITY HEALTH SERVICES**  
  
ORGANIZATIONAL CHART  
CHART IV-E

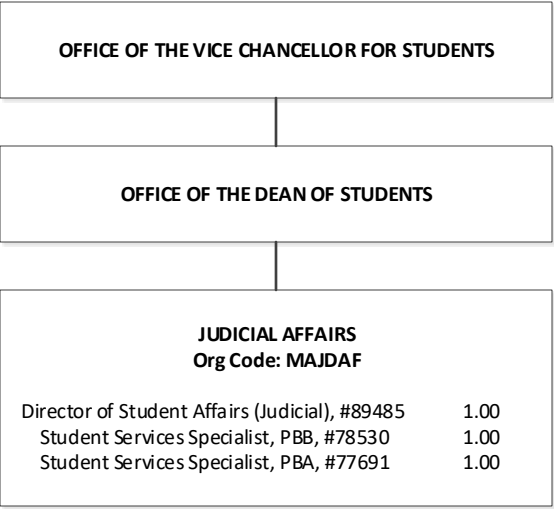


1/ 0.25 (W) position #81877 deleted by Legislature effective FY 2020

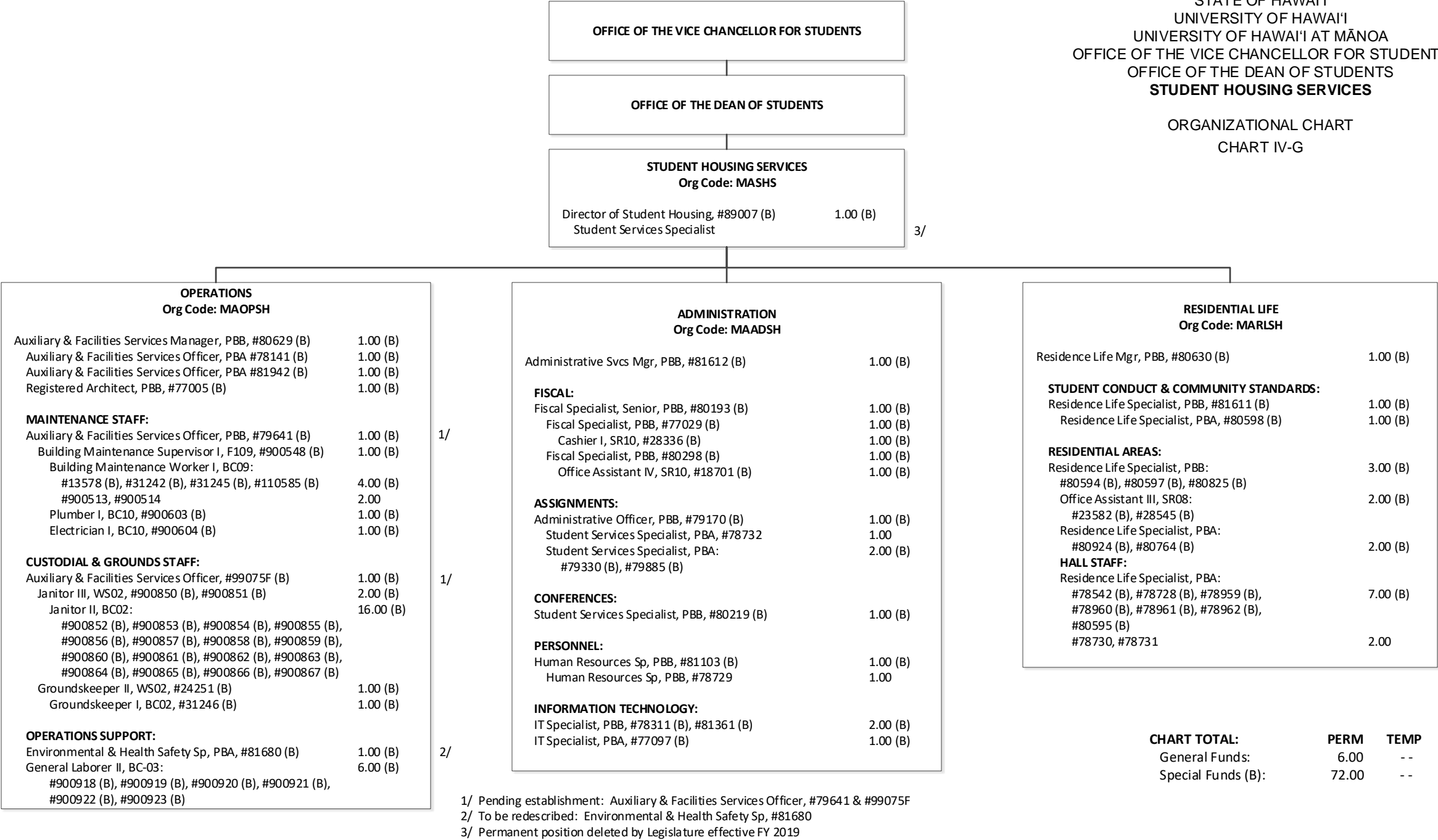
CHART TOTAL:	PERM	TEMP
General Funds:	8.50	--
Revolving Funds (W):	10.00	--

STATE OF HAWAI'I  
UNIVERSITY OF HAWAI'I  
UNIVERSITY OF HAWAI'I AT MĀNOA  
OFFICE OF THE VICE CHANCELLOR FOR STUDENTS  
OFFICE OF THE DEAN OF STUDENTS  
JUDICIAL AFFAIRS

ORGANIZATIONAL CHART  
CHART IV-F



STATE OF HAWAI'I  
UNIVERSITY OF HAWAI'I  
UNIVERSITY OF HAWAI'I AT MĀNOA  
OFFICE OF THE VICE CHANCELLOR FOR STUDENTS  
OFFICE OF THE DEAN OF STUDENTS  
STUDENT HOUSING SERVICES  
  
ORGANIZATIONAL CHART  
CHART IV-G





STATE OF HAWAI'I  
UNIVERSITY OF HAWAI'I  
UNIVERSITY OF HAWAI'I AT MĀNOA  
OFFICE OF THE VICE CHANCELLOR FOR STUDENTS  
ENROLLMENT MANAGEMENT

ORGANIZATIONAL CHART  
CHART IV-H

