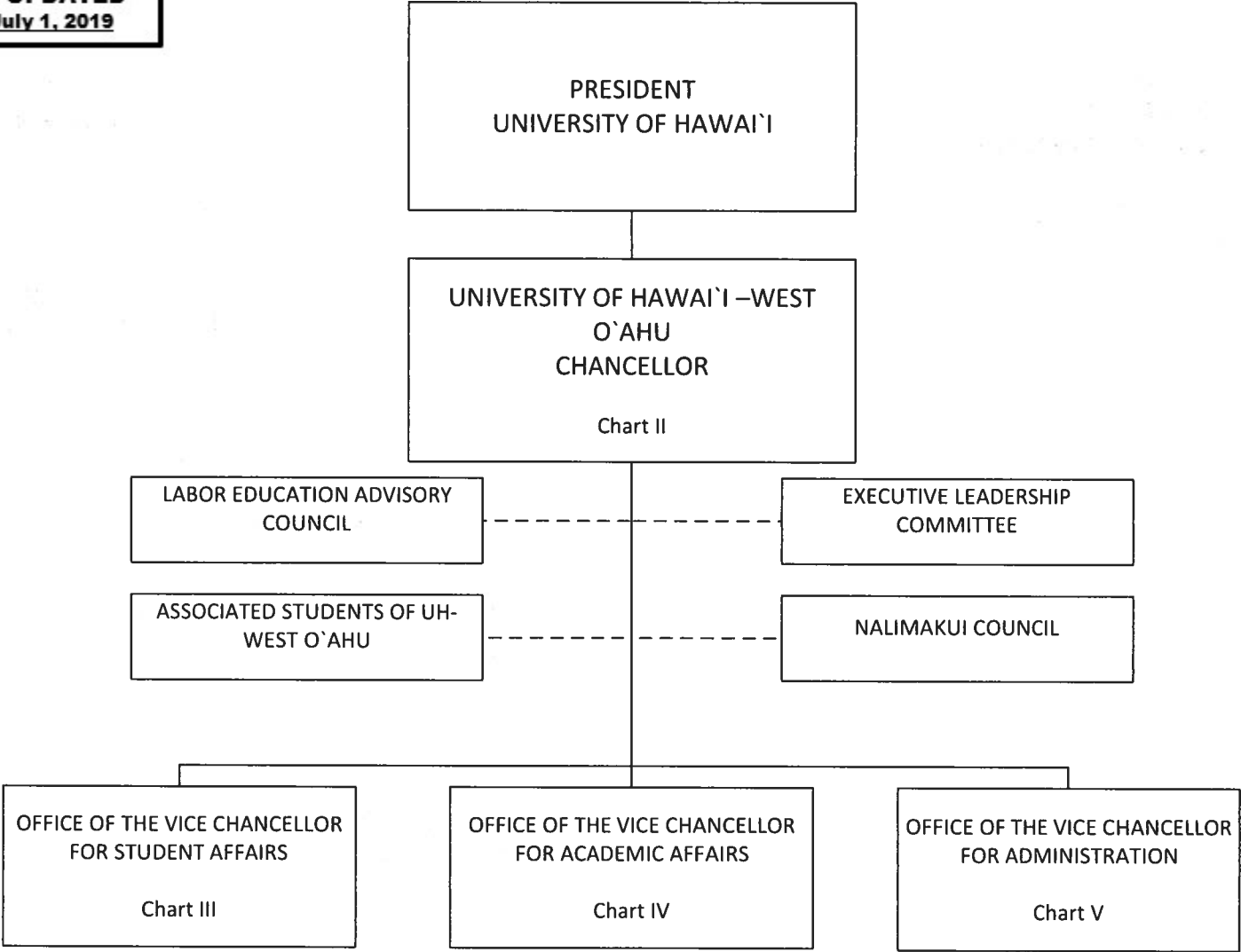


STATE OF HAWAIʻI  
UNIVERSITY OF HAWAIʻI  
UNIVERSITY OF HAWAIʻI – WEST OʻAHU  
  
POSITION ORGANIZATION CHART  
CHART I

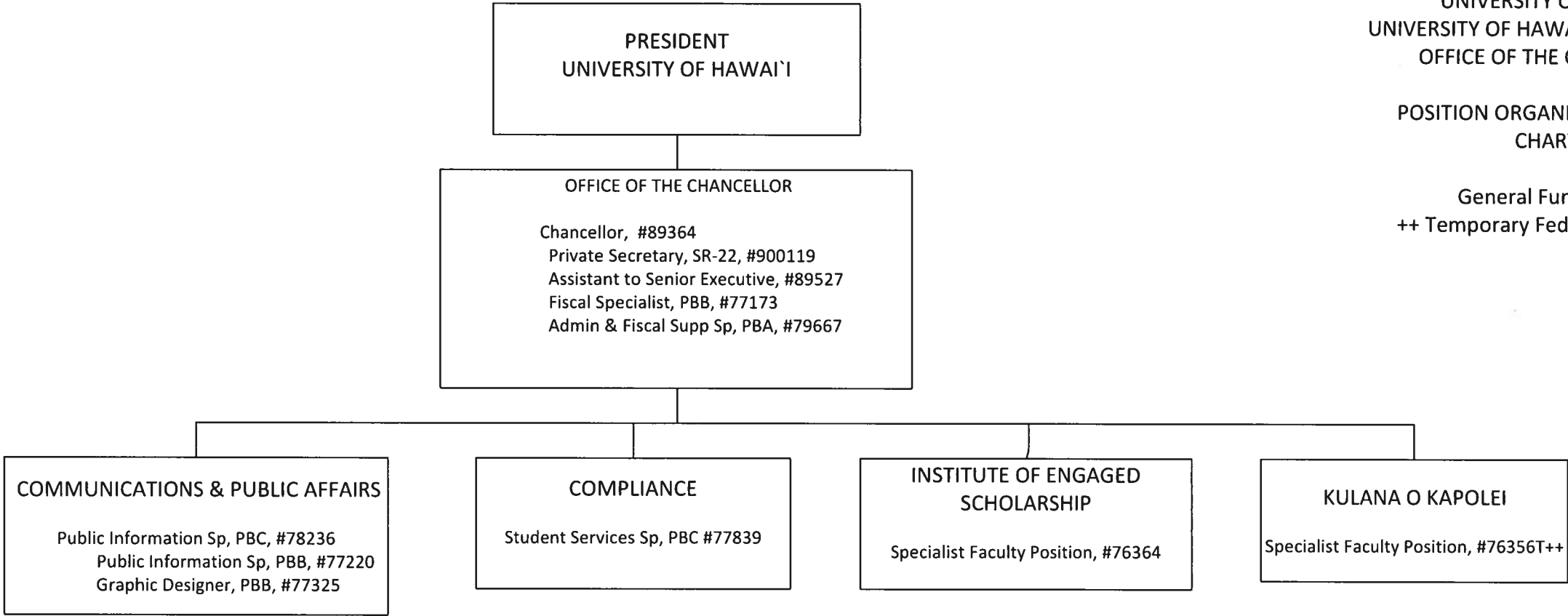


- - - - - Dotted lines denotes advisory role

STATE OF HAWAI'I  
UNIVERSITY OF HAWAI'I  
UNIVERSITY OF HAWAI'I – WEST O'AHU  
OFFICE OF THE CHANCELLOR

POSITION ORGANIZATION CHART  
CHART II

General Funds 10.00  
++ Temporary Federal Funds 1.00



**CHART UPDATED**  
**DATE: July 1, 2019**

OFFICE OF THE VICE CHANCELLOR FOR STUDENT AFFAIRS

Vice Chancellor, #89292  
Instruc & Student Sup Sp, PBA, #78484

STATE OF HAWAI'I  
UNIVERSITY OF HAWAI'I  
UNIVERSITY OF HAWAI'I – WEST O`AHU  
OFFICE OF THE VICE CHANCELLOR FOR STUDENT  
AFFAIRS

POSITION ORGANIZATION CHART  
CHART III

General Funds 42.00

DIVISIONAL & INSTITUTIONAL SUPPORT

UNIT LEAD (to be appointed from BOR position)  
Student Serv Sp, PBB, #81144  
Admissions Sp, PBB, #81807  
Specialist Faculty Position, #76346

ENROLLMENT SERVICES

Admissions Mgr, PBC, #78469  
Instruc & Student Sup Sp, PBA, #79821  
Office Assistant IV, SR-10, #49249

ADMISSIONS

Admissions Sp, PBB, #78482  
Admissions Sp, PBB, #78483  
Admissions Sp, PBB, #80415  
Admissions Sp, PBB, #78127  
Admissions Sp, PBA, #78671

REGISTRATION & RECORDS

Registrar, PBB, #78376  
Asst Registrar, PBB, #81836  
Student Serv Sp, PBB, #77065  
Student Serv Sp, PBA, #80714,

FINANCIAL AID

Financial Aid Mgr, PBC, #78125  
Financial Aid Sp, PBB, #77645  
Financial Aid Sp, PBB, #78126  
Financial Aid Sp, PBA, #77350

STUDENT DEVELOPMENT

Specialist Faculty Position, #83711

ADVISING SERVICES

UNIT LEAD (to be appointed from BOR position)  
Academic Advisor, PBB, #77506 #78485  
Specialist Faculty Position, #76347, #76348, #76350, #76377, #76385

CAREER DEVELOPMENT

Specialist Faculty Position, #76303  
Student Serv Sp, PBB, #80111

STUDENT LIFE

Specialist Faculty Position, #76354  
Student Activities Off, PBB, #77164  
Student Serv Sp, PBB, #77793

STUDENT ENGAGEMENT

Specialist Faculty Position, #76270  
Student Serv Sp, PBB, #81221

NOEAU LEARNING CENTER

Specialist Faculty Position, #76336, #76338, #76380

COUNSELING SERVICES

Specialist Faculty Position, #76298

DISABILITY SERVICES

Specialist Faculty Position, #76366

HEALTH & WELLNESS EDUCATION

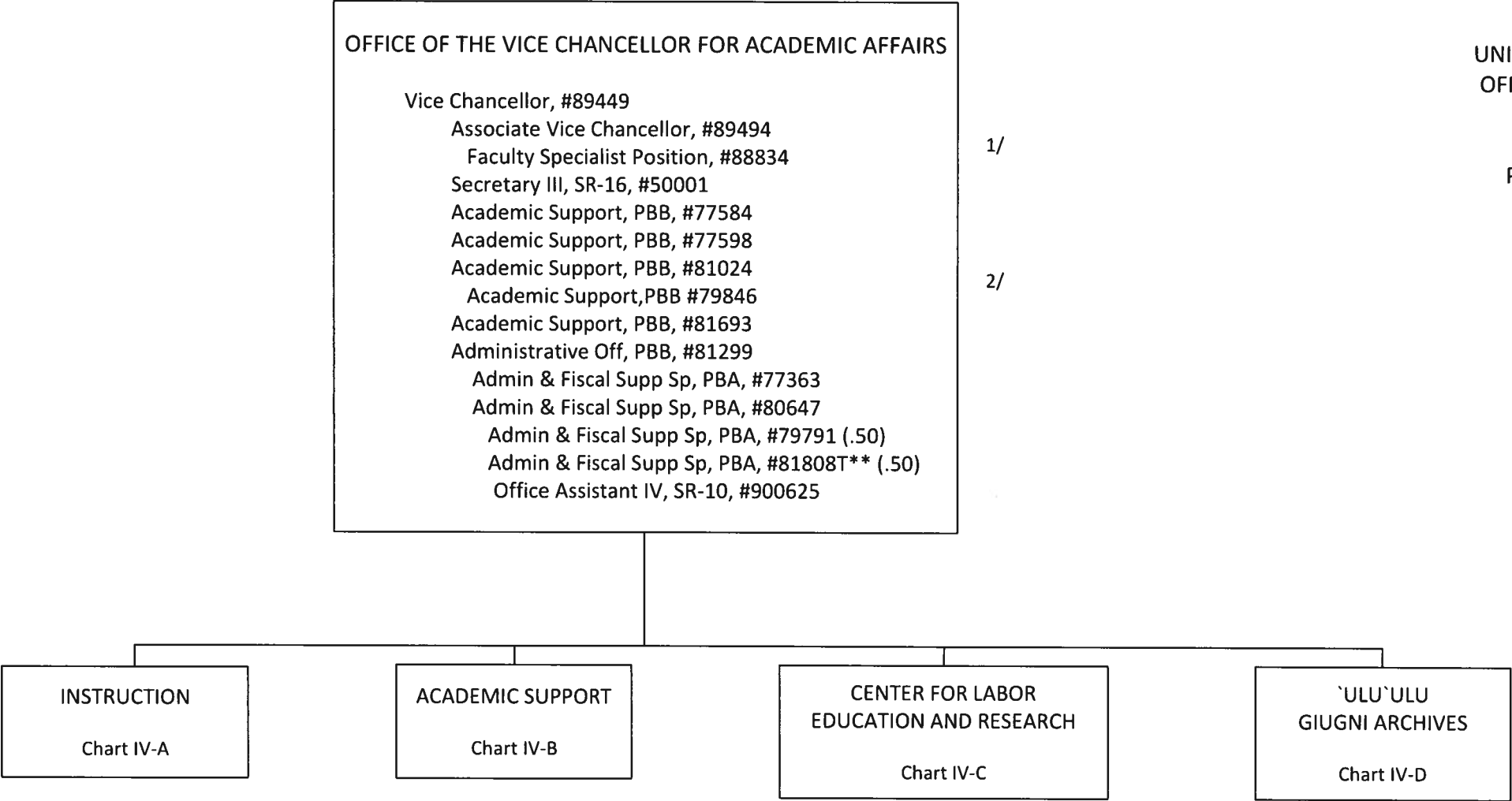
Registered Nurse III, SR-18, #900911

STUDENT EQUITY & ACCESS

STATE OF HAWAI`I  
UNIVERSITY OF HAWAI`I  
UNIVERSITY OF HAWAI`I – WEST O`AHU  
OFFICE OF THE VICE CHANCELLOR FOR  
ACADEMIC AFFAIRS

POSITION ORGANIZATION CHART  
CHART IV

General Funds 13.50  
\*\*BT General Funds .50

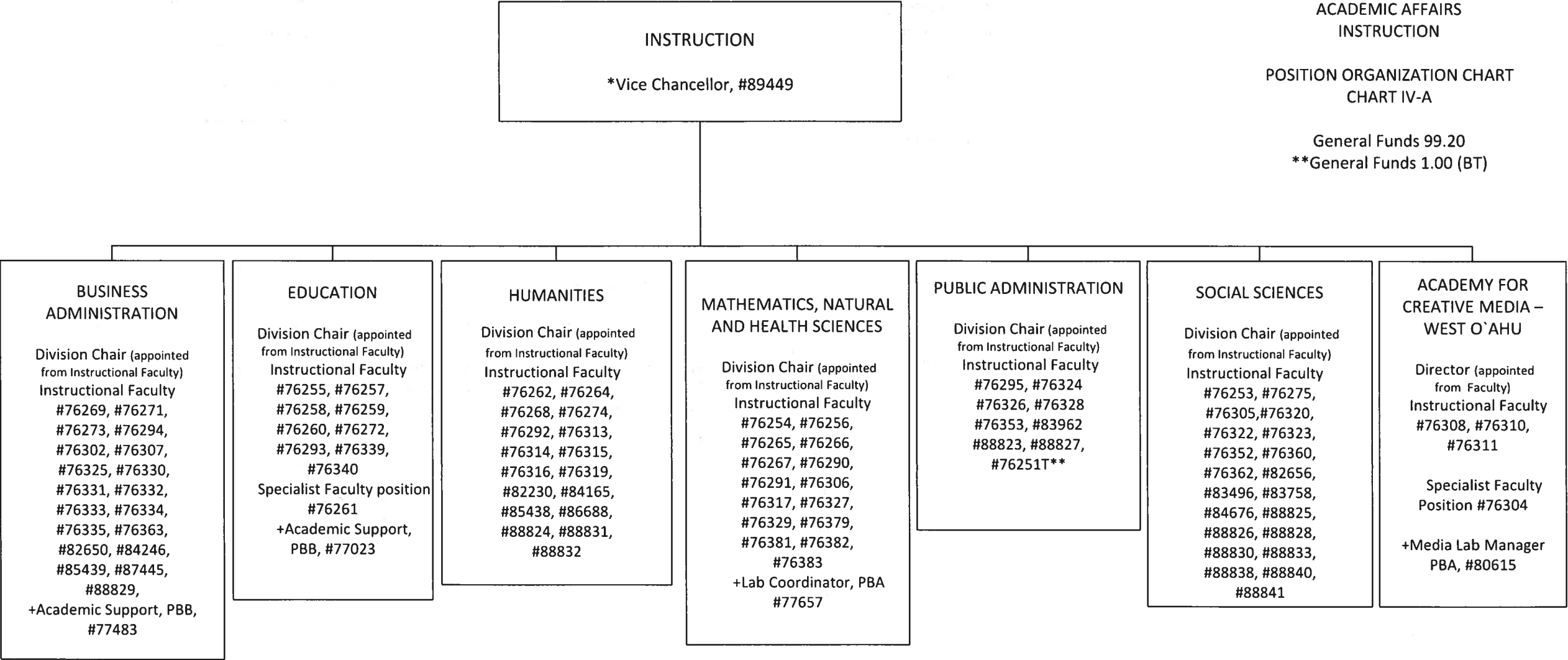


\*\*Budgeted temporary position .50 FTE, Special Funds .50 FTE

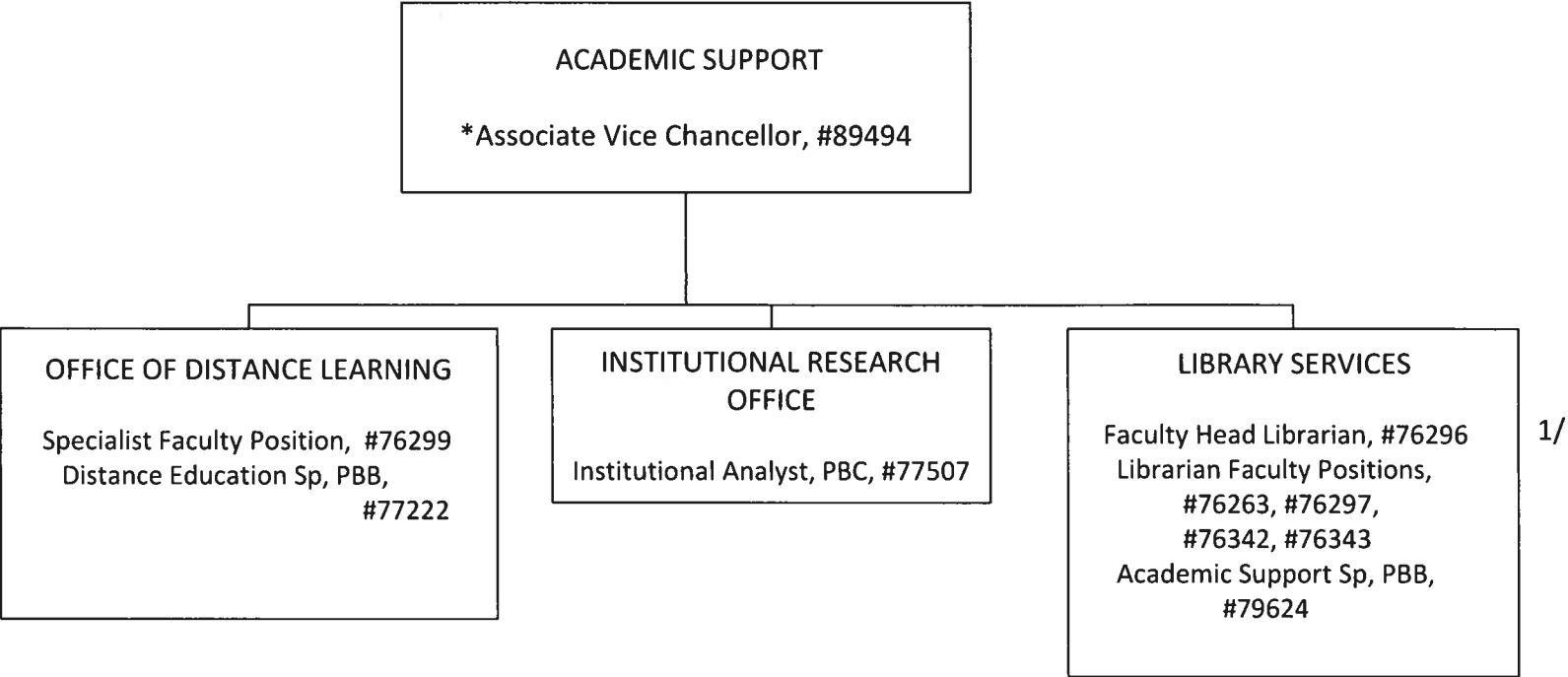
1/ Associate Vice Chancellor, #89494 in OVCAA also services as Director of Academic Support  
2/ position will be redescribed

POSITION ORGANIZATION CHART  
CHART IV-A

General Funds 99.20  
\*\*General Funds 1.00 (BT)



\*Position count not included on this page  
+ Reports to Division Chair, Director, or assigned Department Coordinator  
Positions pending establishment 99814F, 99818F (.20 FTE)

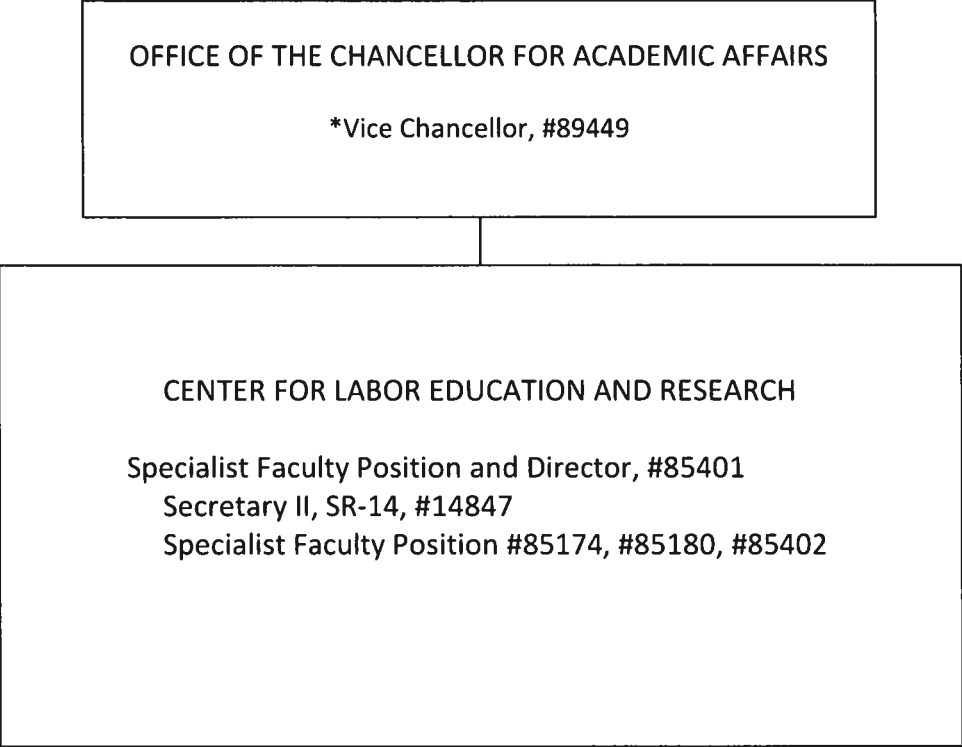


STATE OF HAWAI'I  
UNIVERSITY OF HAWAI'I  
UNIVERSITY OF HAWAI'I – WEST O`AHU  
OFFICE OF THE VICE CHANCELLOR FOR  
ACADEMIC AFFAIRS  
ACADEMIC SUPPORT

POSITION ORGANIZATION CHART  
CHART IV-B

General Funds 9.00

\*Position count not included on this page  
1/ #76296 filled with temporary librarian, Interim Head Librarian appointed from librarian faculty position



STATE OF HAWAI'I  
UNIVERSITY OF HAWAI'I  
UNIVERSITY OF HAWAI'I – WEST O`AHU  
OFFICE OF THE VICE CHANCELLOR FOR  
ACADEMIC AFFAIRS  
CENTER FOR LABOR EDUCATION AND  
RESEARCH

POSITION ORGANIZATION CHART  
CHART IV-C

General Funds 5.00

\*Position count not included on this page

OFFICE OF THE VICE CHANCELLOR FOR ACADEMIC AFFAIRS

\*Vice Chancellor  
#89449

‘ULU‘ULU  
GIUGNI ARCHIVES

Educational Spec, PBB, #77377  
Educational Spec, PBB, #77651  
Educational Spec, PBB, #77678  
Media Spec, PBB, #77600  
Educational Spec, PBB, #77644

STATE OF HAWAI‘I  
UNIVERSITY OF HAWAI‘I  
UNIVERSITY OF HAWAI‘I – WEST O‘AHU  
OFFICE OF THE VICE CHANCELLOR FOR  
ACADEMIC AFFAIRS  
‘ULU‘ULU  
GIUGNI ARCHIVES

POSITION ORGANIZATION CHART  
CHART IV-D

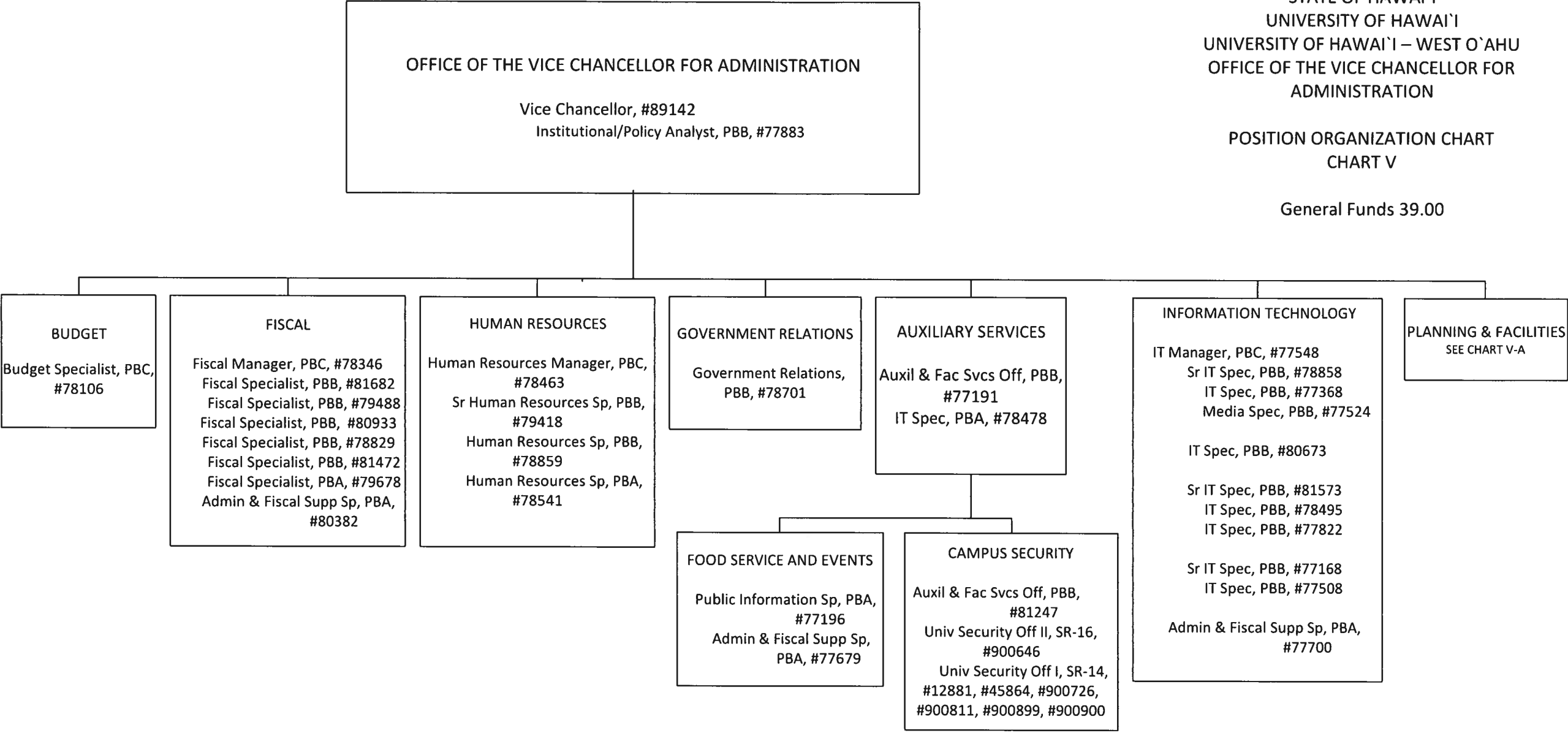
General Funds 5.00

\*Position count not included on this page

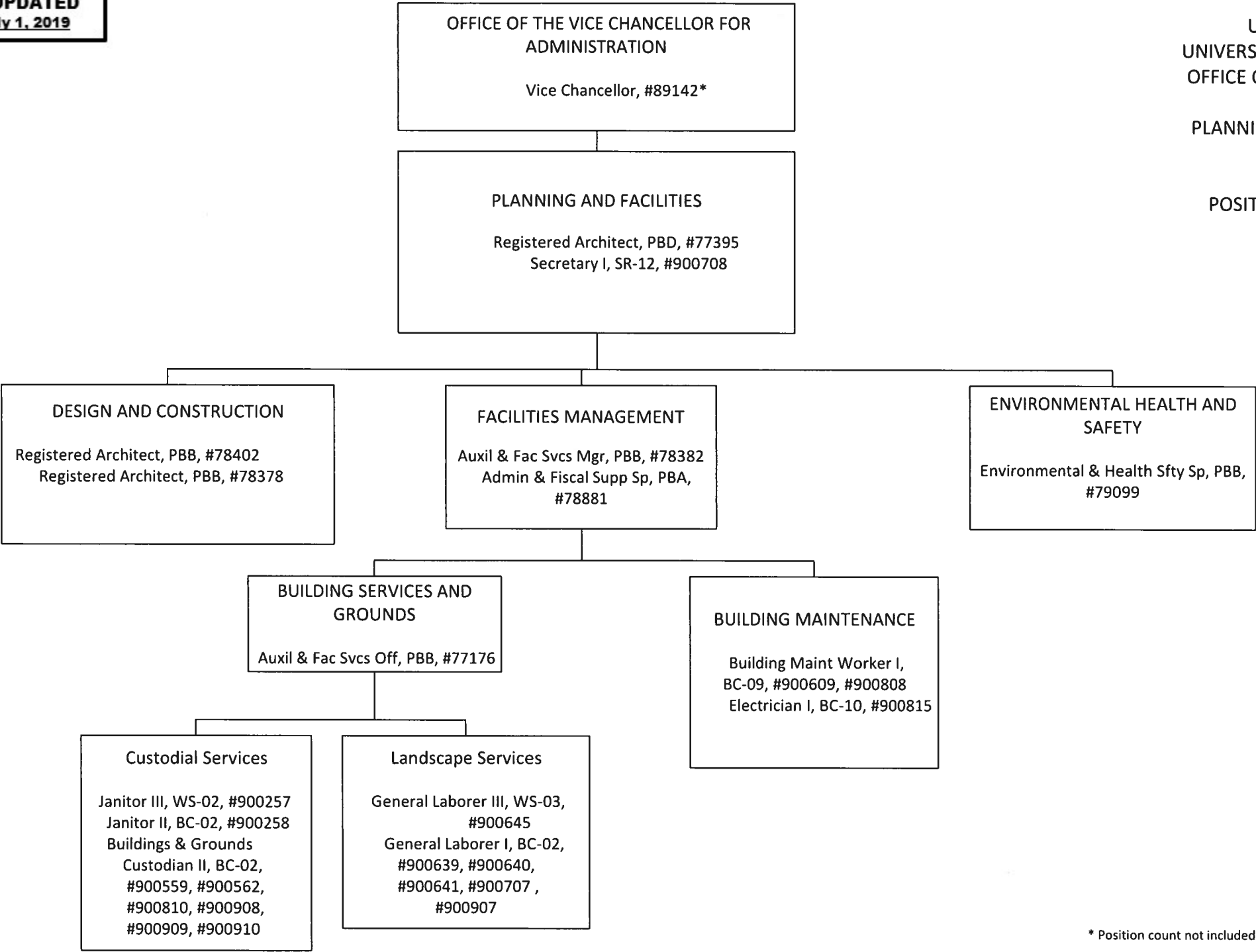


POSITION ORGANIZATION CHART  
CHART V

General Funds 39.00



General Funds 25.00



\* Position count not included on this page

+ Position to be redescribed