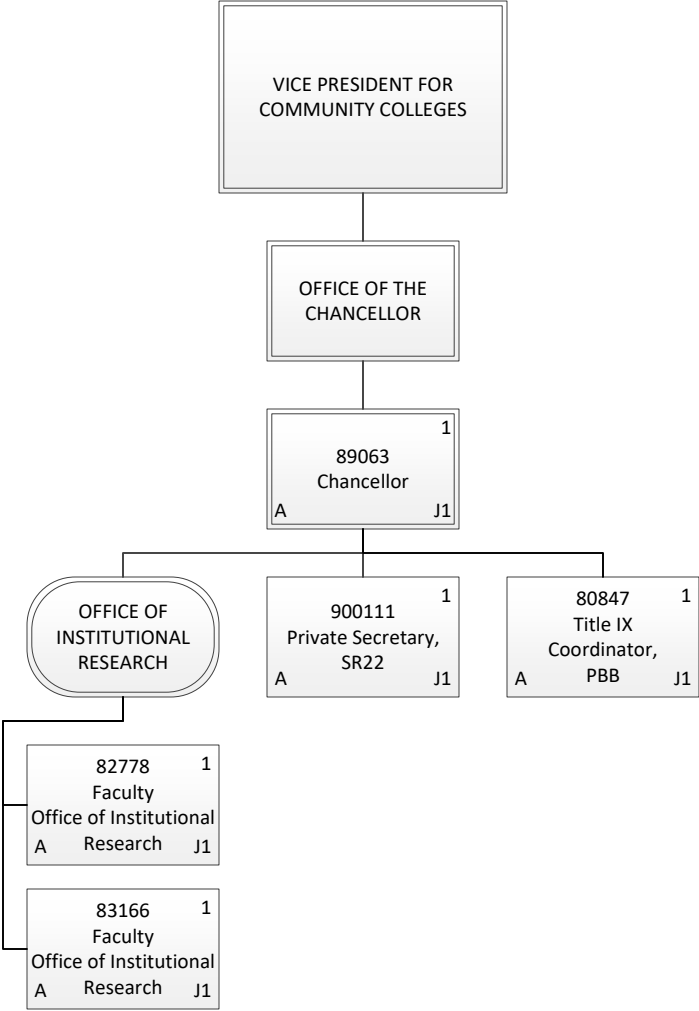
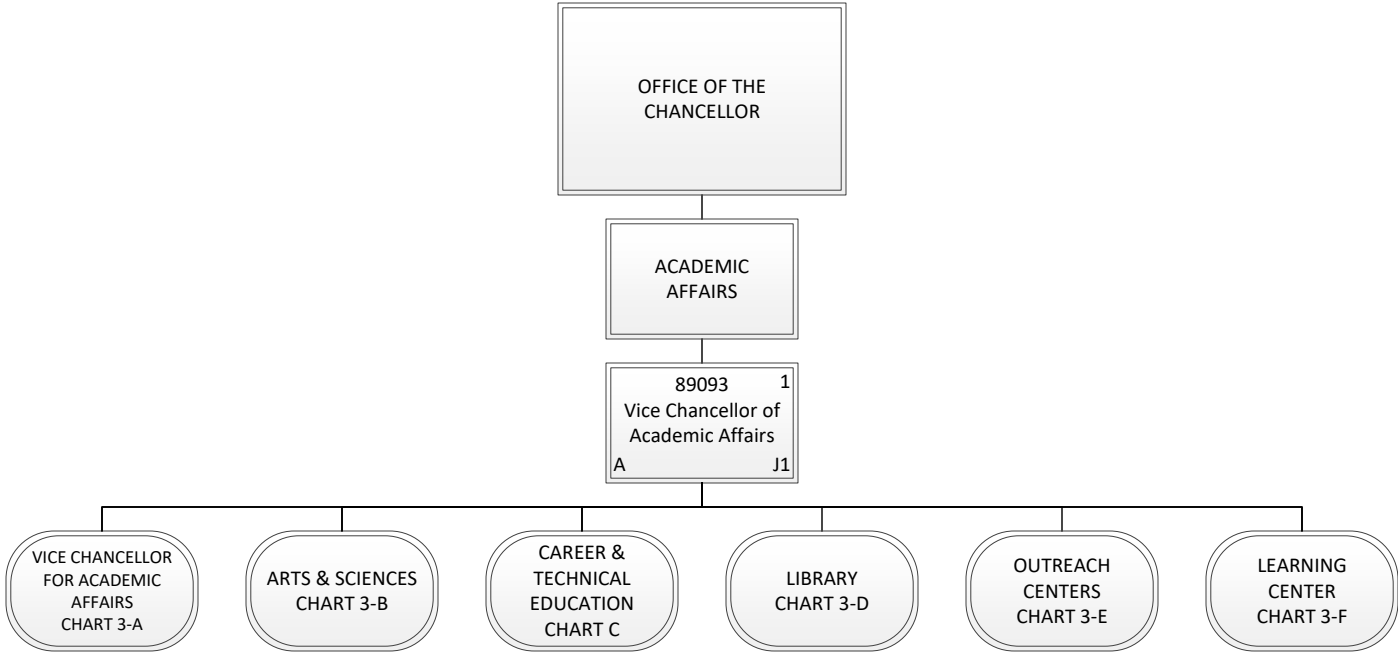


Permanent	210.25
General Fund	206.25
Special Fund	4.00
Temporary	1.00
General Fund	1.00
Grand Total	211.25



Permanent	5.00
General Fund	5.00
Grand Total	5.00

CHART UPDATED
DATE: July 1, 2020



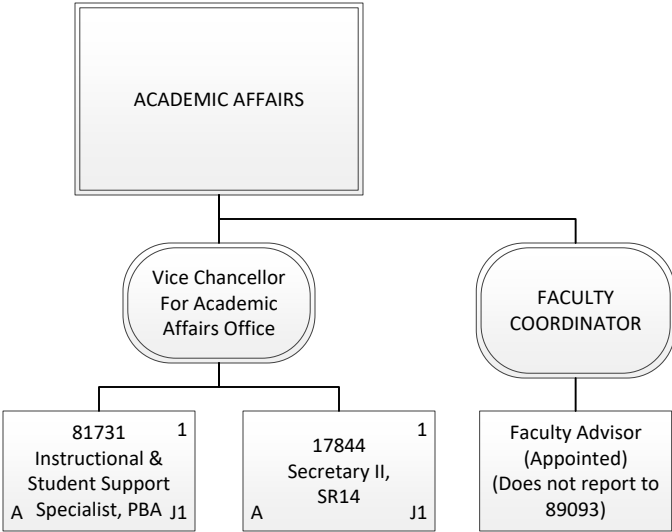
STATE OF HAWAII
UNIVERSITY OF HAWAII
MAUI COLLEGE

Position Organization Chart

Chart 3

Permanent	1.00
General Fund	1.00
Grand Total	1.00

CHART UPDATED
DATE: July 1, 2020

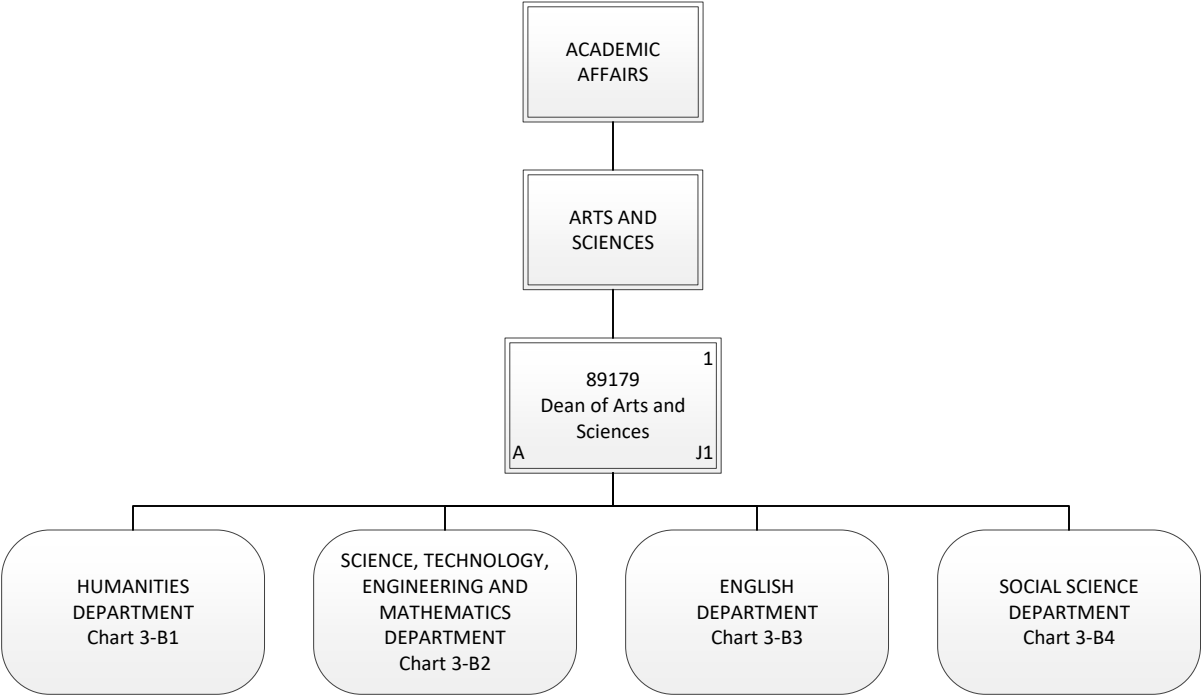


STATE OF HAWAII
UNIVERSITY OF HAWAII
MAUI COLLEGE

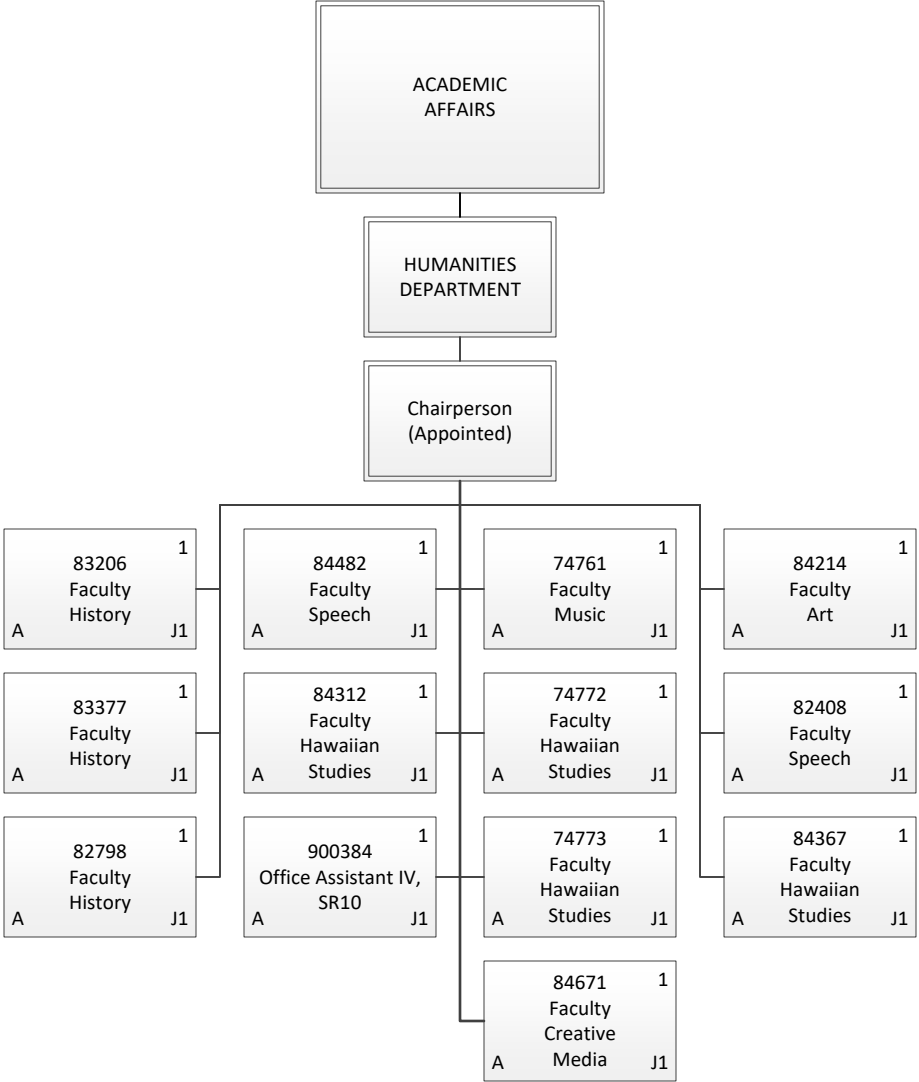
Position Organization Chart

Chart 3-A

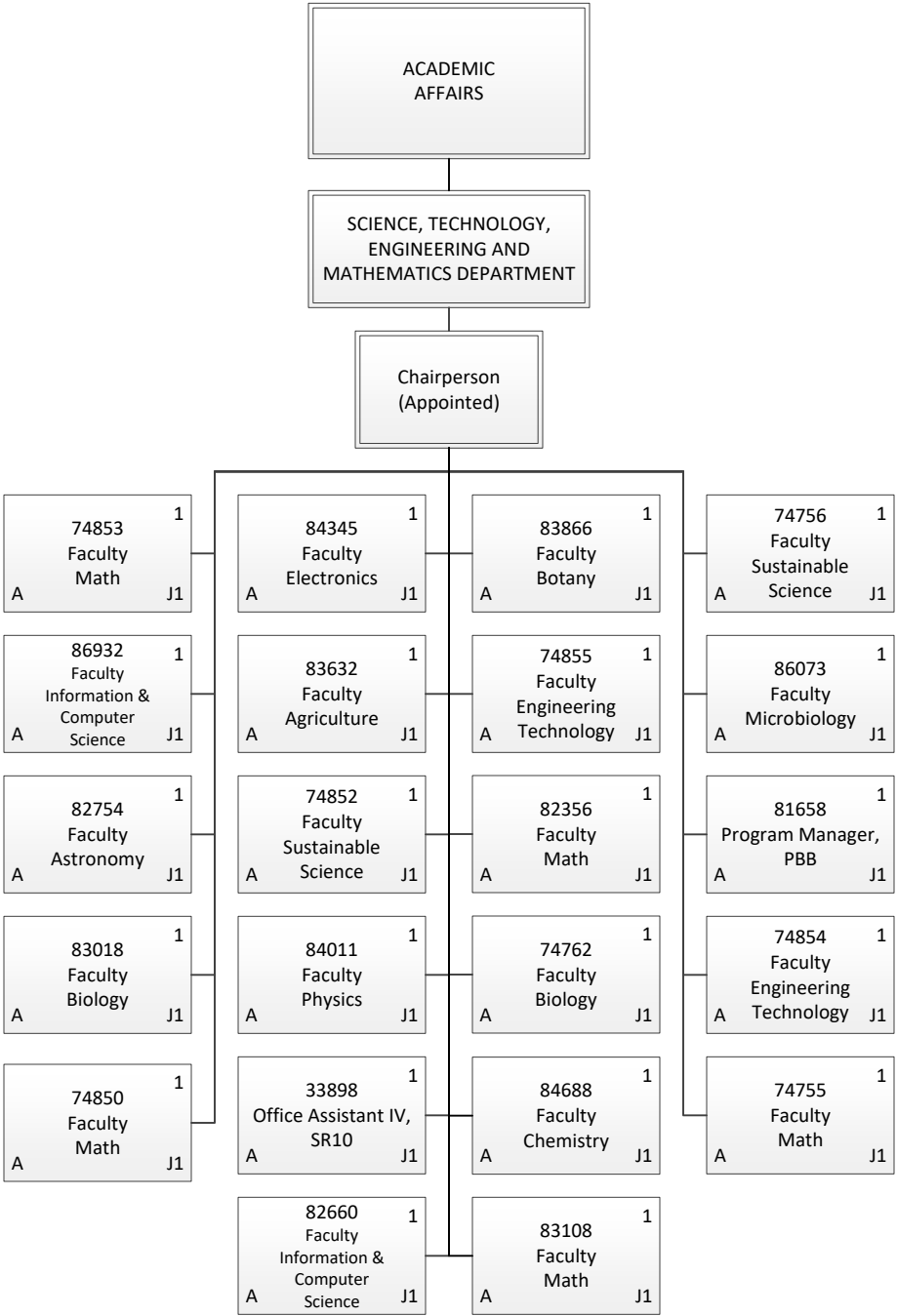
Permanent	2.00
General Fund	2.00
Grand Total	2.00



Permanent	1.00
General Fund	1.00
Grand Total	1.00



Permanent	13.00
General Fund	13.00
Grand Total	13.00



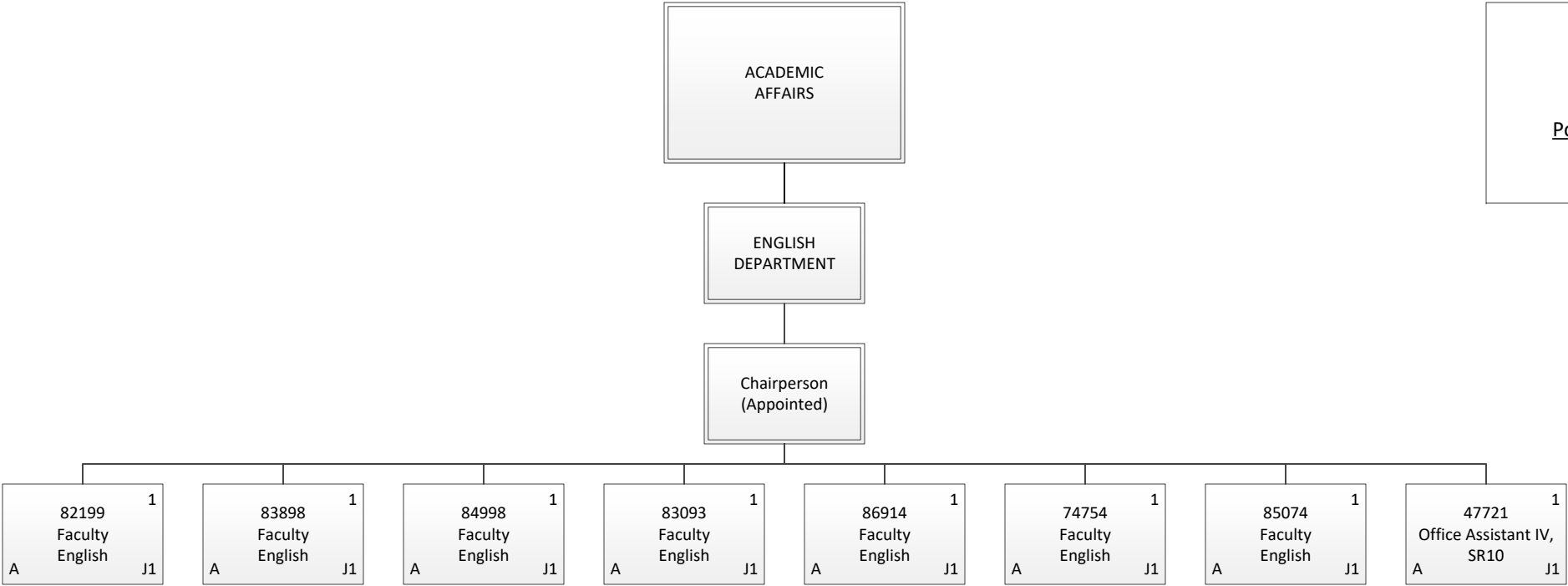
Permanent	22.00
General Fund	22.00
Grand Total	22.00

CHART UPDATED
DATE: July 1, 2020

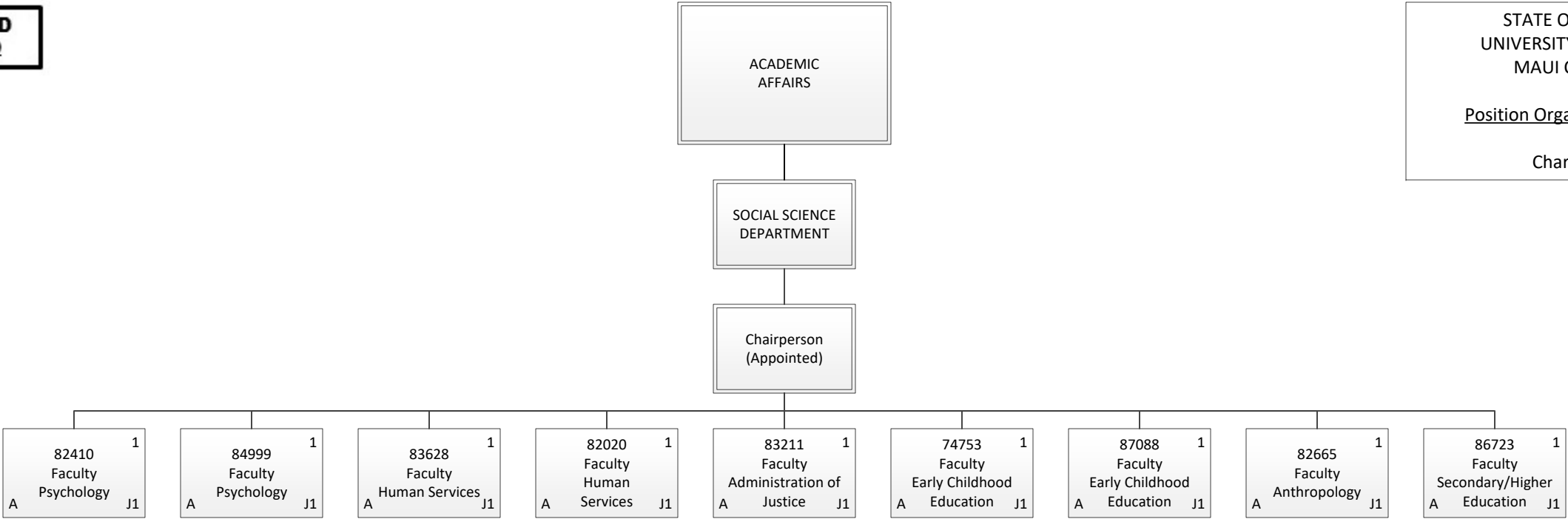
STATE OF HAWAII
UNIVERSITY OF HAWAII
MAUI COLLEGE

Position Organization Chart

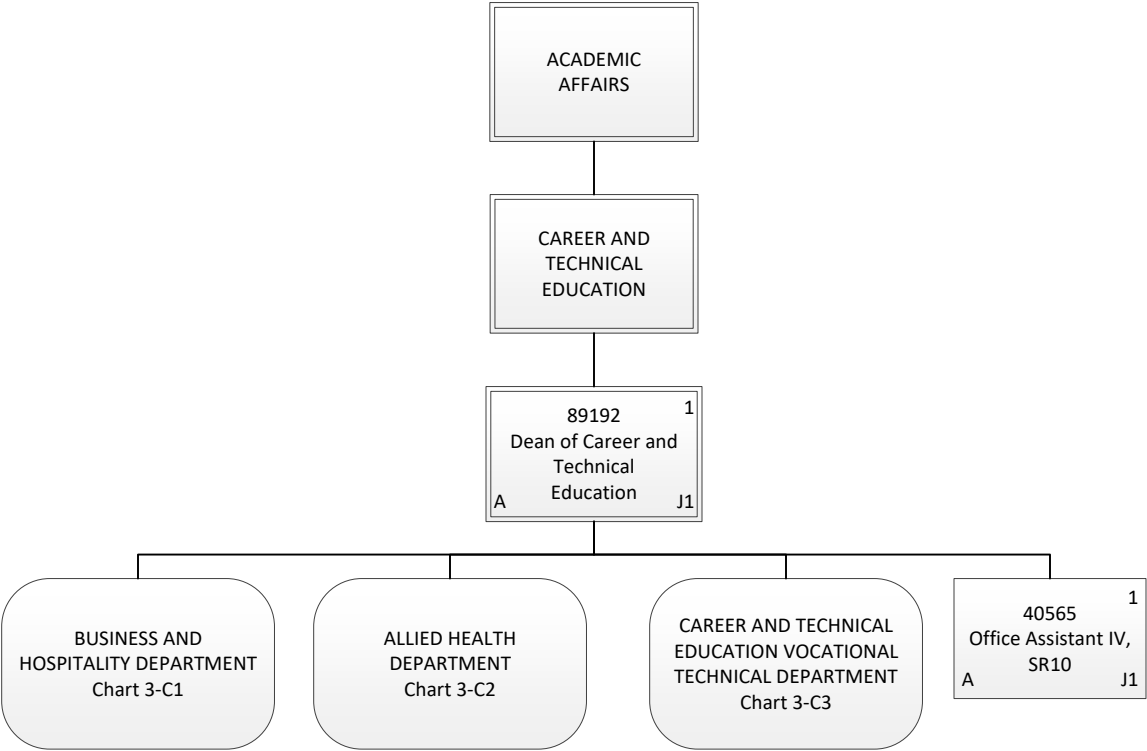
Chart 3-B3



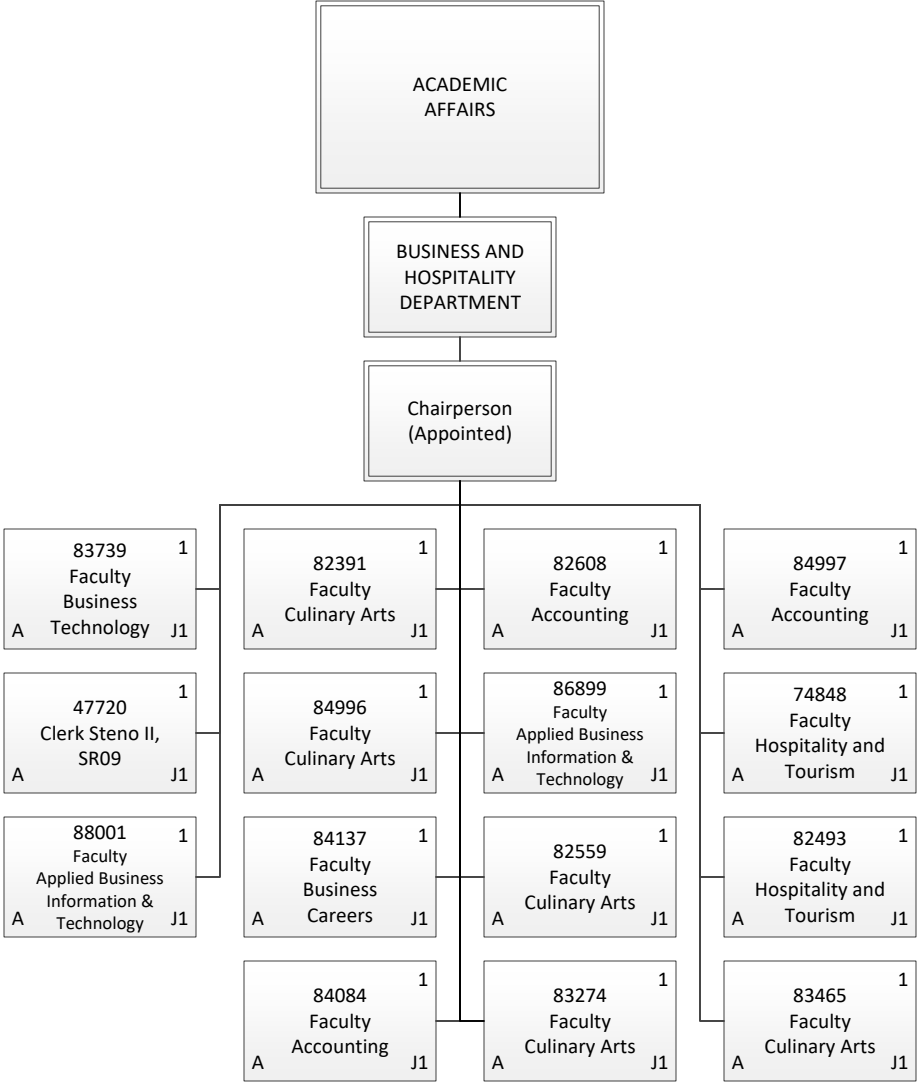
Permanent	8.00
General Fund	8.00
Grand Total	8.00



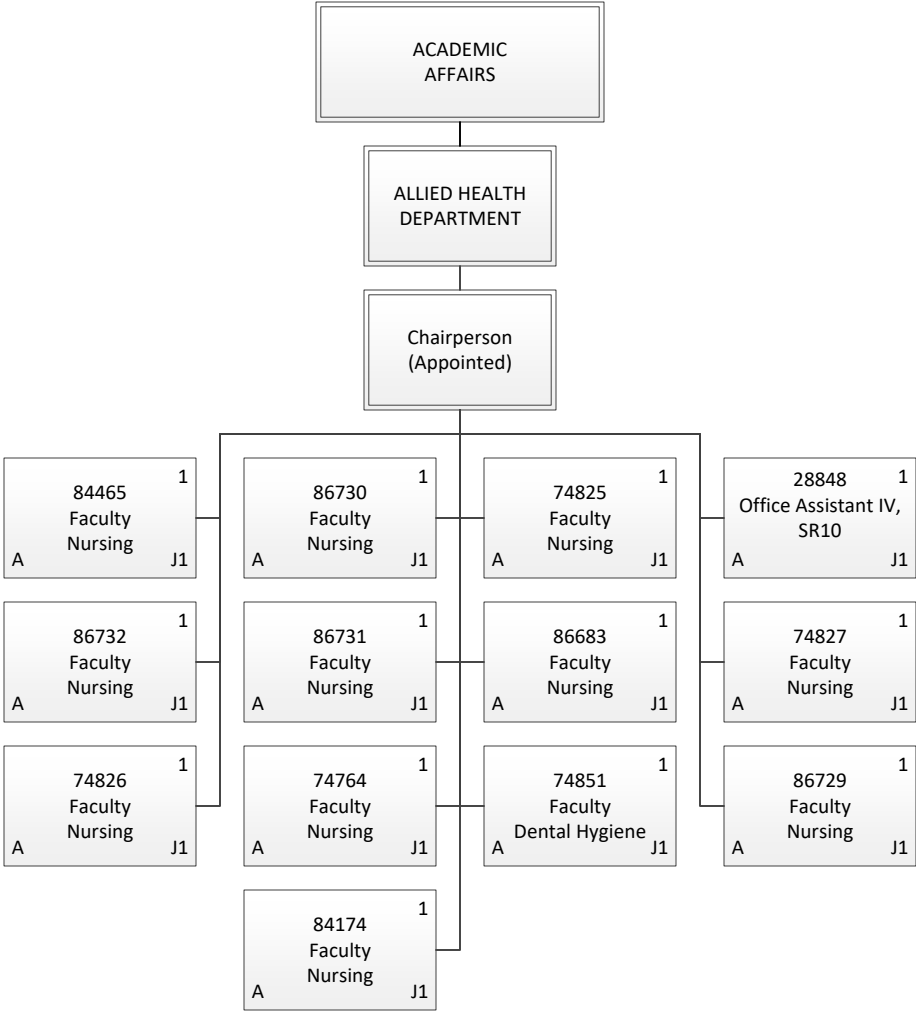
Permanent	9.00
General Fund	9.00
Grand Total	9.00



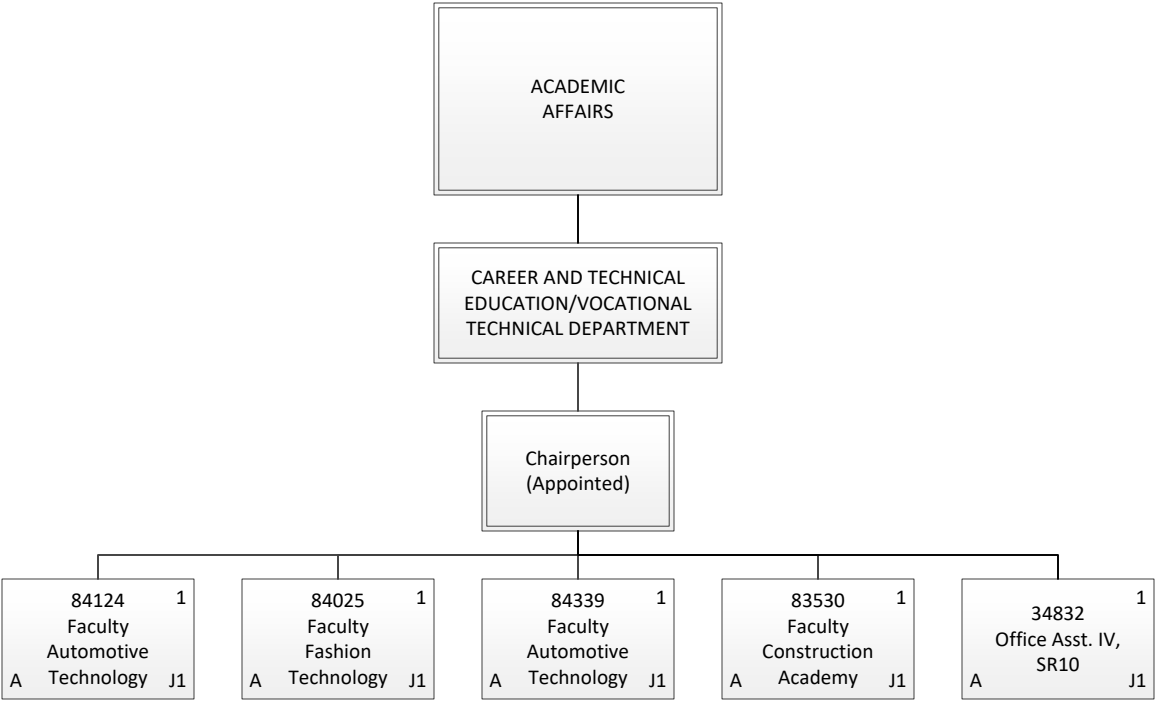
Permanent	2.00
General Fund	2.00
Grand Total	2.00



Permanent	15.00
General Fund	15.00
Grand Total	15.00

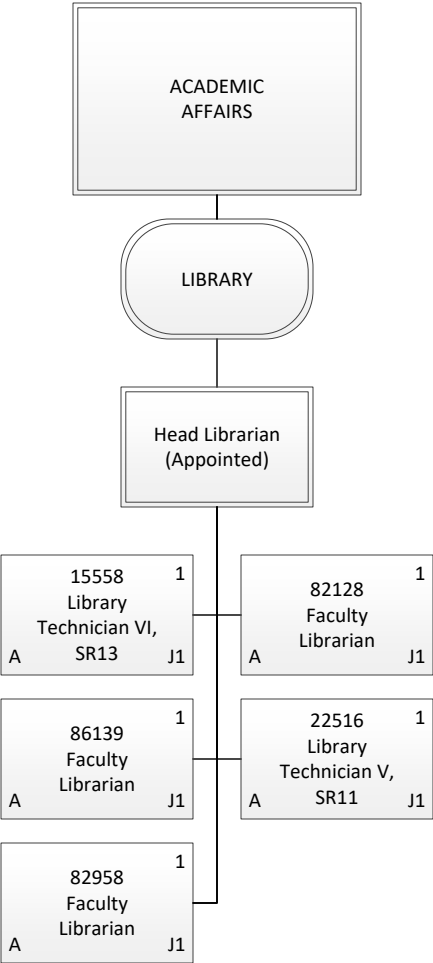


Permanent	13.00
General Fund	13.00
Grand Total	13.00



Permanent	5.00
General Fund	5.00
Grand Total	5.00

CHART UPDATED
DATE: July 1, 2020

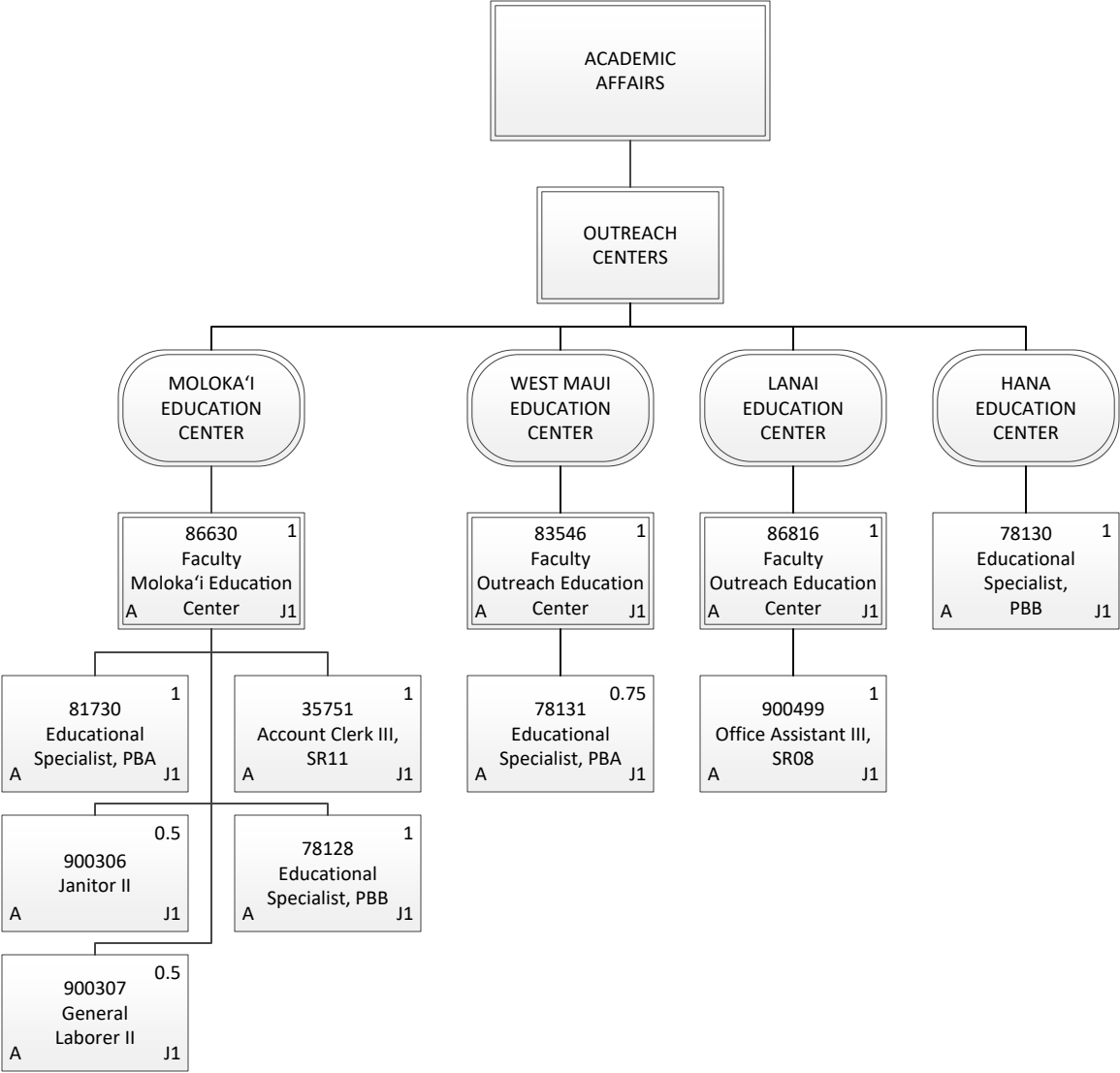


STATE OF HAWAII
UNIVERSITY OF HAWAII
MAUI COLLEGE

Position Organization Chart

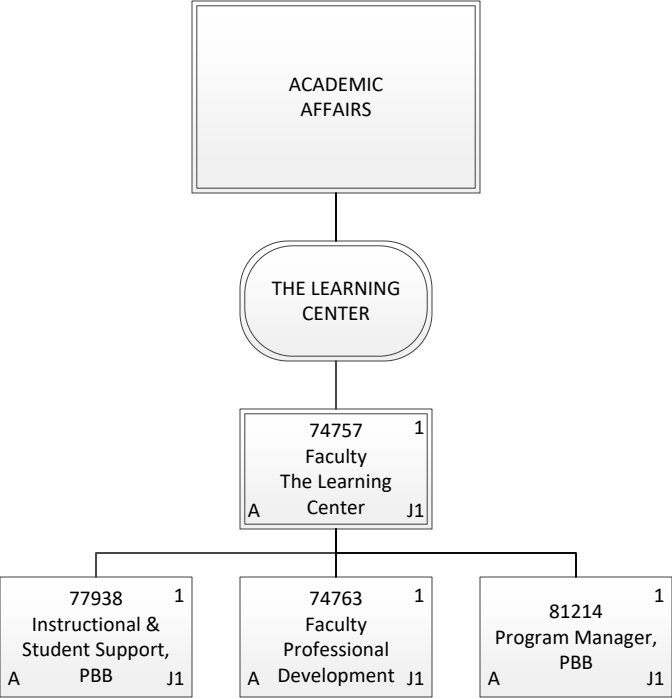
Chart 3-D

Permanent	5.00
General Fund	5.00
Grand Total	5.00



Permanent	9.75
General Fund	9.75
Grand Total	9.75

CHART UPDATED
DATE: July 1, 2020

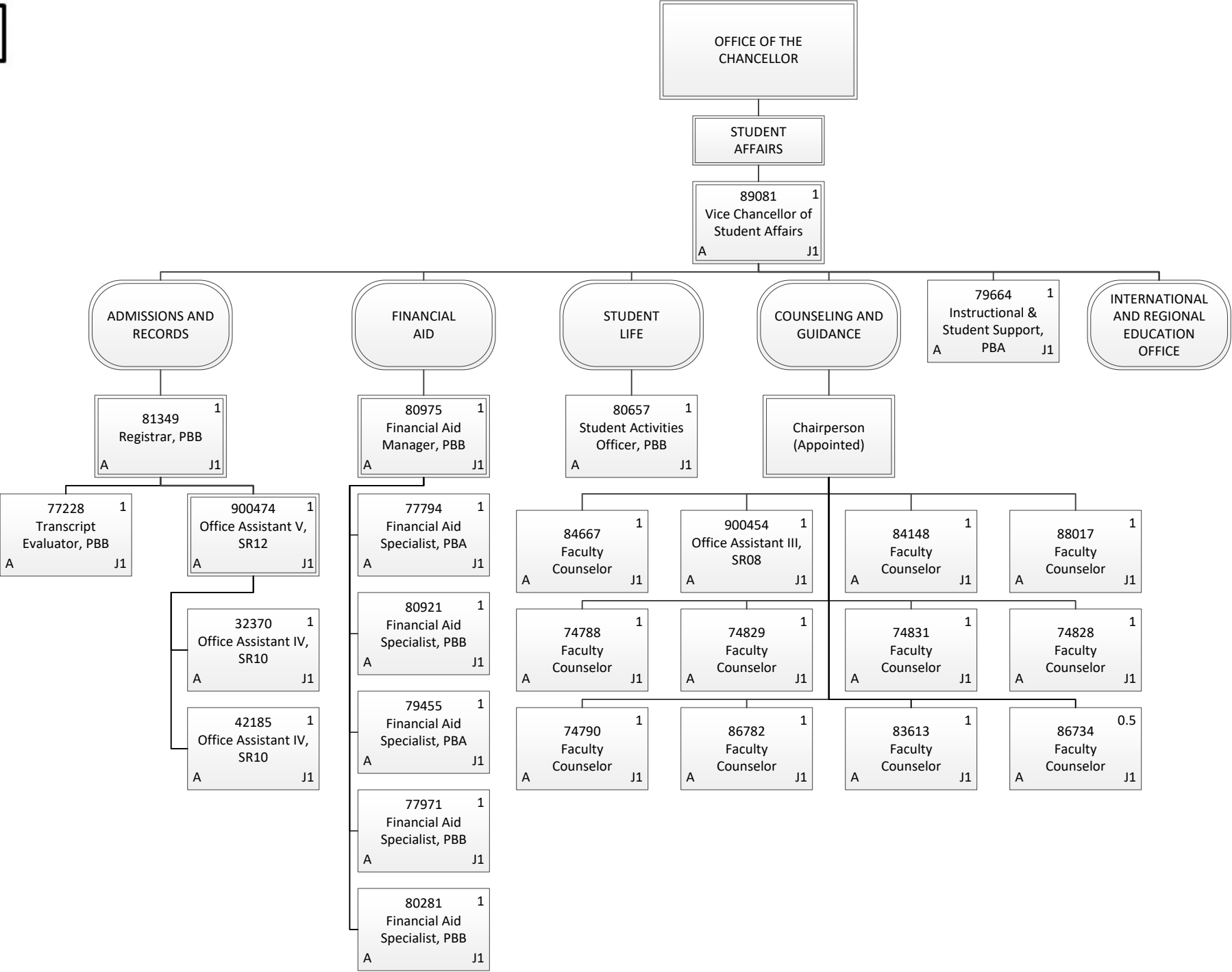


STATE OF HAWAII
UNIVERSITY OF HAWAII
MAUI COLLEGE

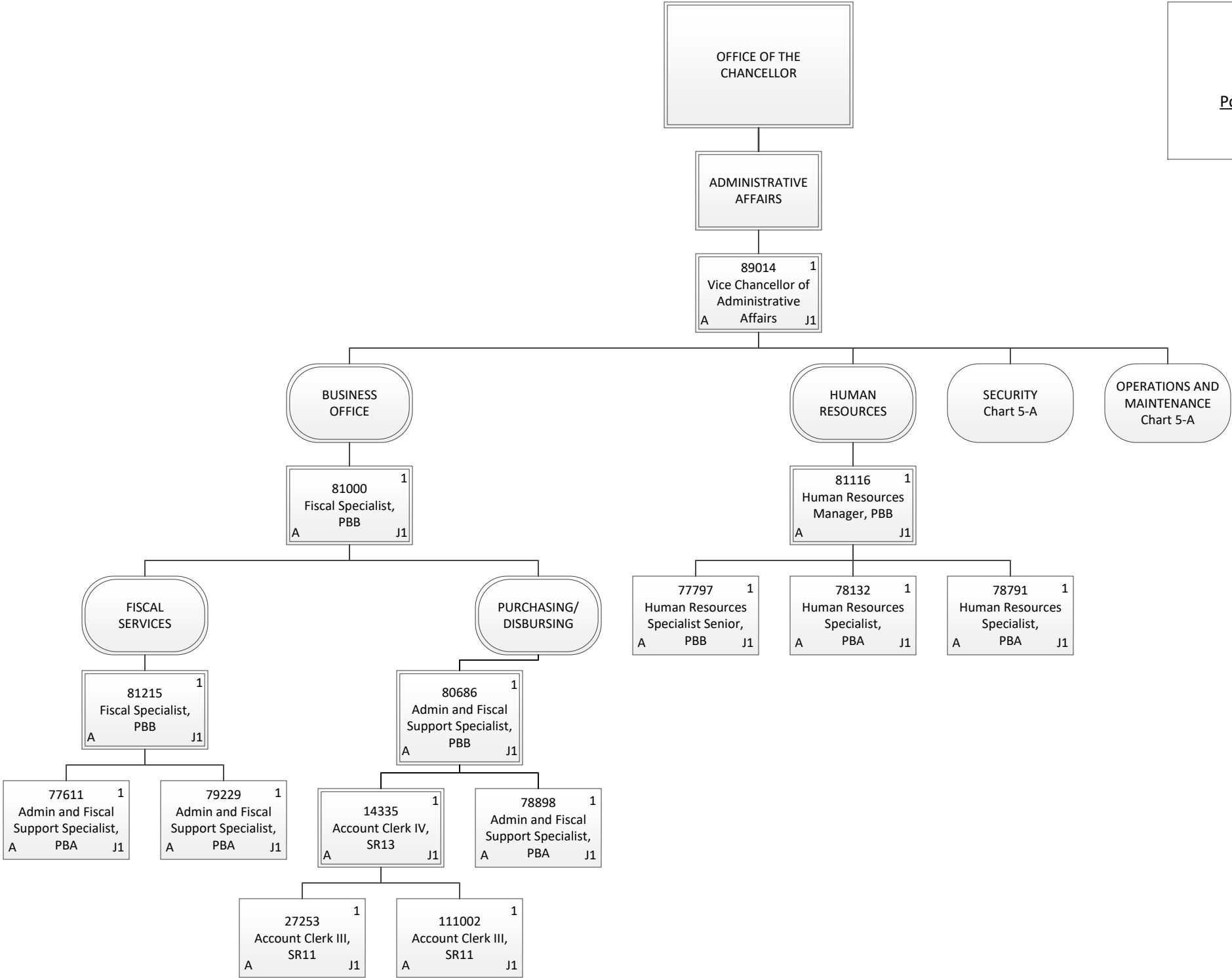
Position Organization Chart

Chart 3-F

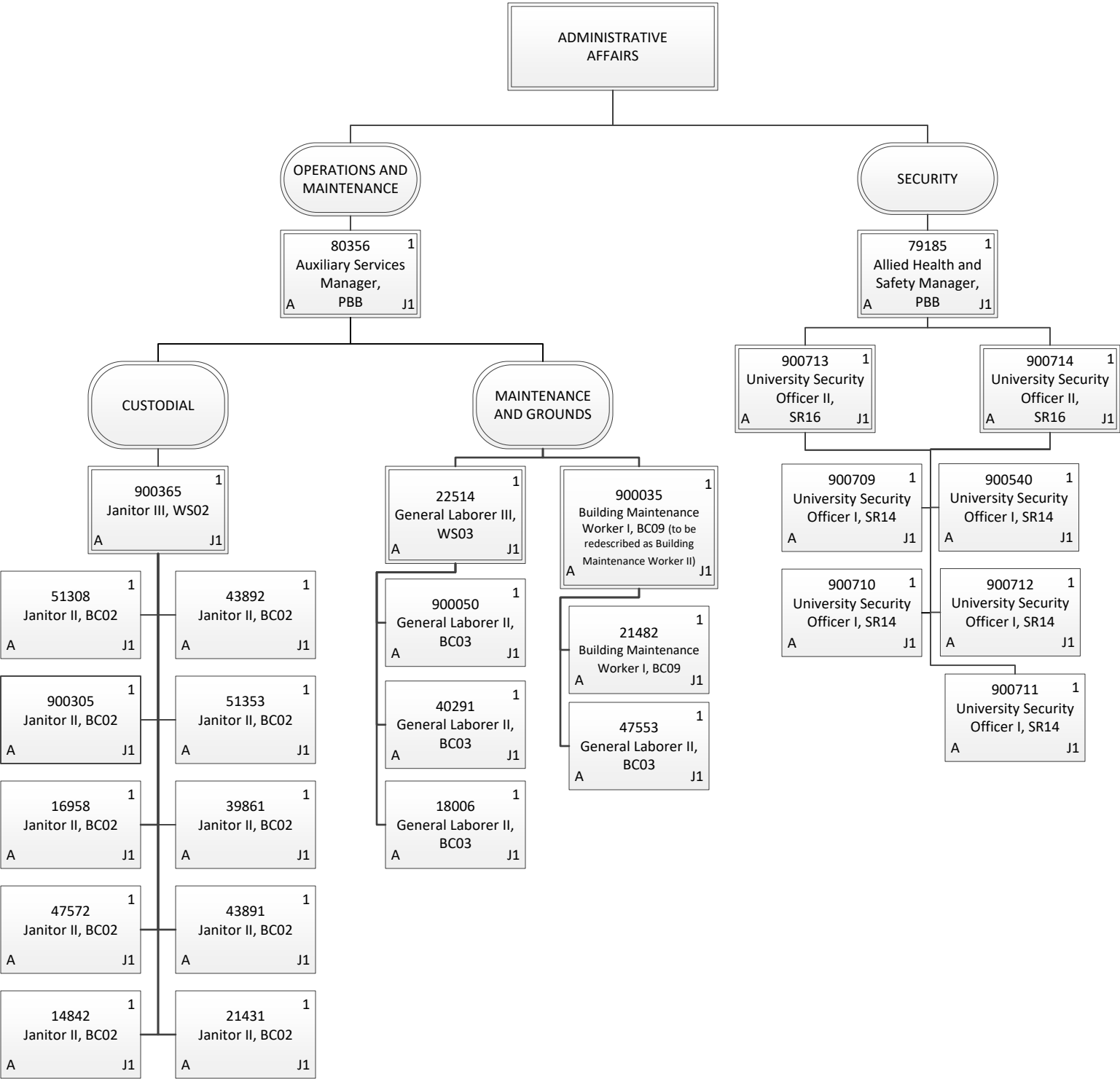
Permanent	4.00
General Fund	4.00
Grand Total	4.00



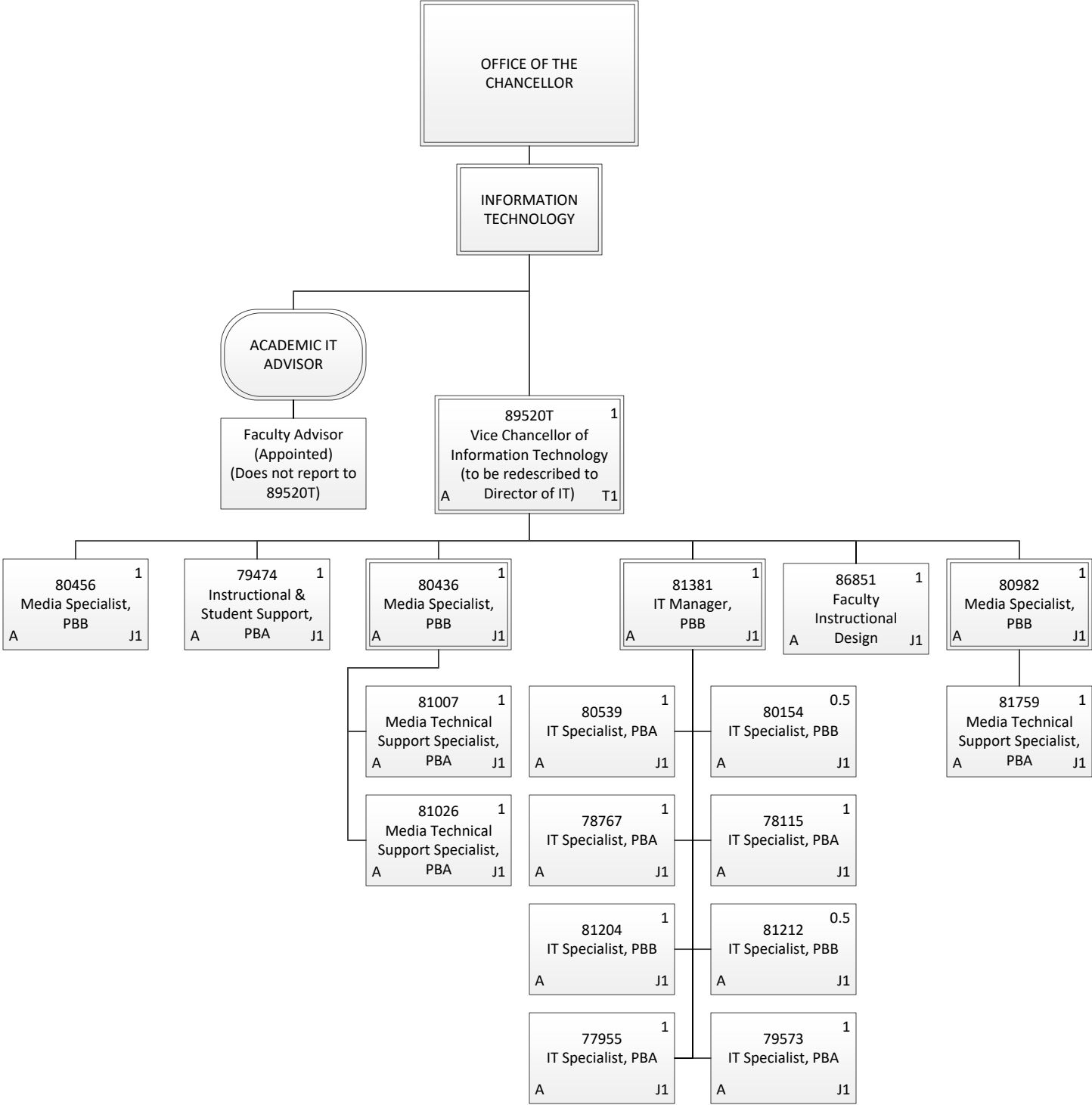
Permanent	25.50
General Fund	25.50
Grand Total	25.50



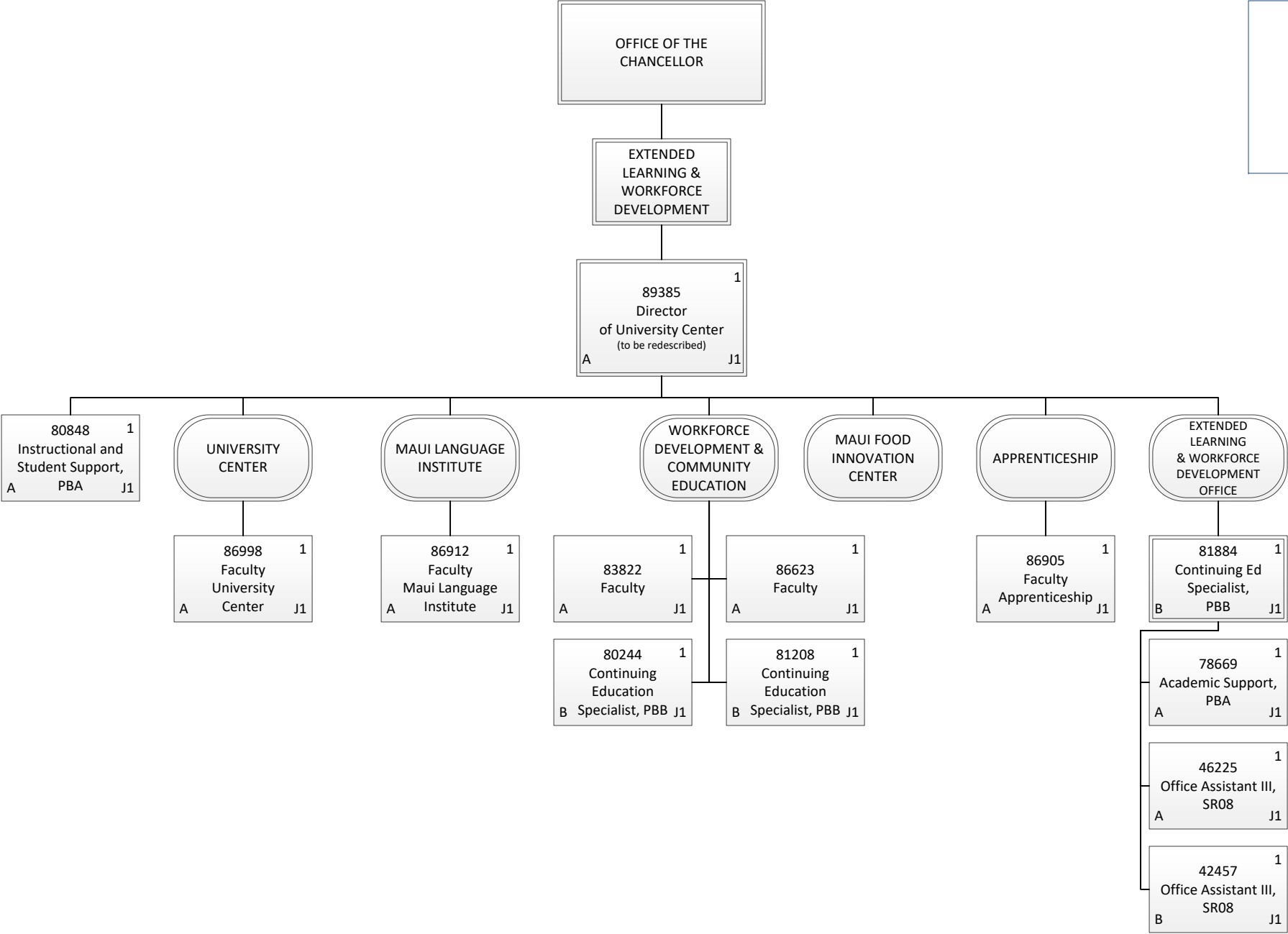
Permanent	14.00
General Fund	14.00
Grand Total	14.00



Permanent	27.00
General Fund	27.00
Grand Total	27.00



Permanent	16.00
General Fund	16.00
Temporary	1.00
General Fund	1.00
Grand Total	17.00



Permanent	13.00
General Fund	9.00
Special Fund	4.00
Grand Total	13.00