

OFFICE OF THE PRESIDENT
UNIVERSITY OF HAWAI'I SYSTEM

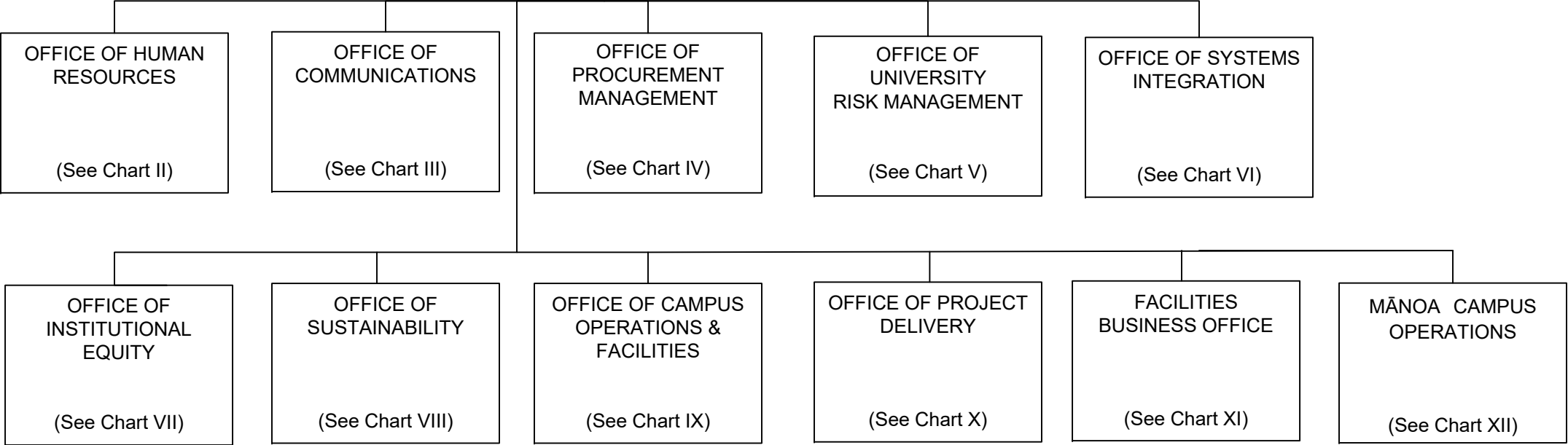
President, University of Hawai'i System89058¹

STATE OF HAWAI'I
UNIVERSITY OF HAWAI'I
SYSTEMWIDE ADMINISTRATION
VICE PRESIDENT FOR ADMINISTRATION

POSITION ORGANIZATION CHART

CHART I

| OFFICE OF THE VICE PRESIDENT FOR ADMINISTRATION | | | | |
|--|-----|--|--|----------|
| Vice President for Administration89446 | | | | |
| Associate Vice President for Administration89103 | | | | |
| Project Manager | PBB | | | 80789* |
| Institutional/Policy Analyst | PBB | | | 77074 |
| Administrative Officer | PBB | | | 81367 |
| Proc/Prop Mgt Sp | PBB | | | 80429(W) |
| Director of Planning & Project Development | | | | 89153* |



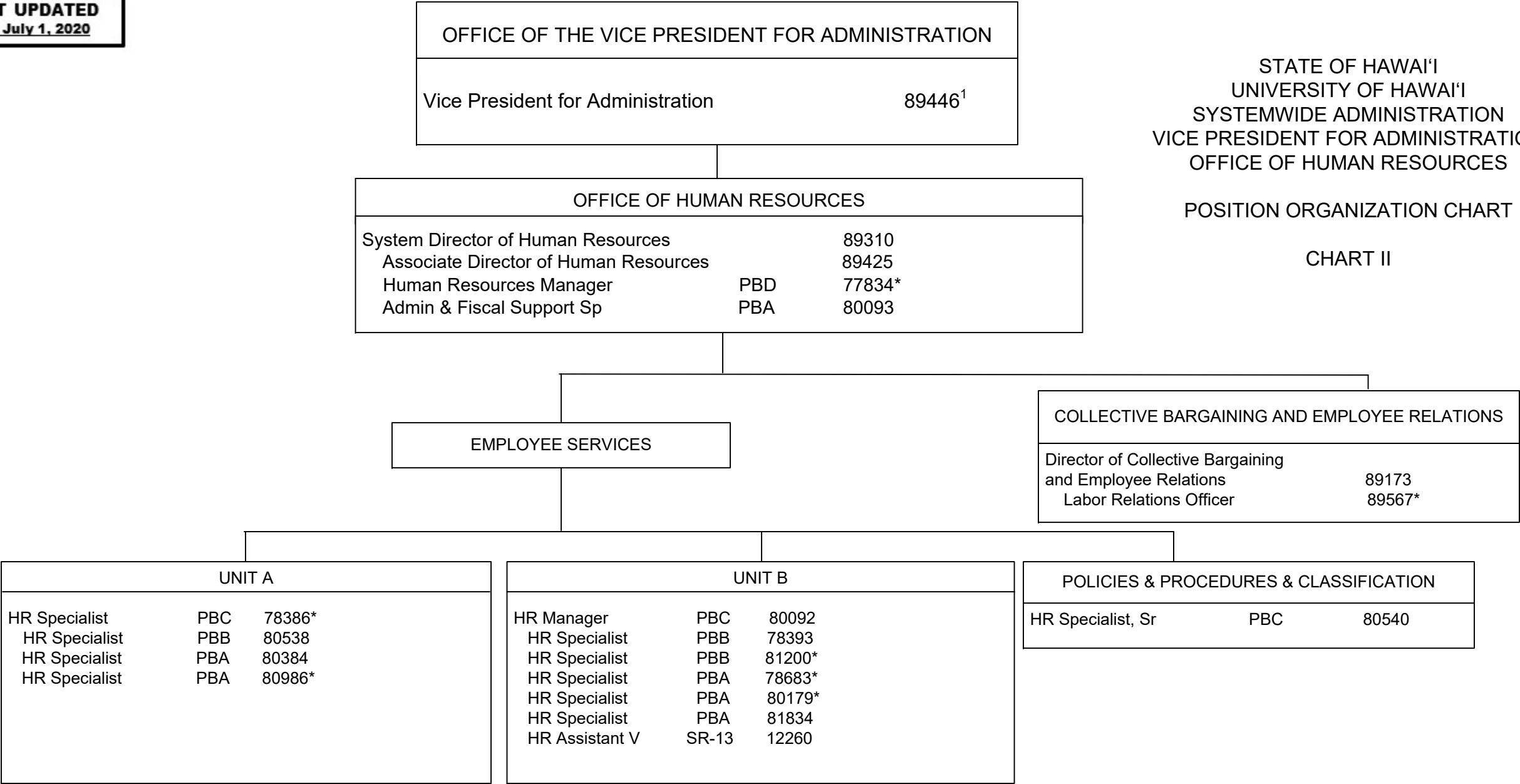
¹ Excluded from position count
² Appropriated but not established, 8 Special Fund (B) positions: 93926F – 93933F
* Positions appropriated to Manoa, reflected organizationally on this chart

| | Perm |
|--------------------|------------------------|
| General Fund | 4.00 (SW) |
| General Fund | 2.00 (MA)* |
| Revolving Fund (W) | 1.00 (SW) |
| Special Fund (B) | 8.00 (SW) ² |

STATE OF HAWAI'I
UNIVERSITY OF HAWAI'I
SYSTEMWIDE ADMINISTRATION
VICE PRESIDENT FOR ADMINISTRATION
OFFICE OF HUMAN RESOURCES

POSITION ORGANIZATION CHART

CHART II



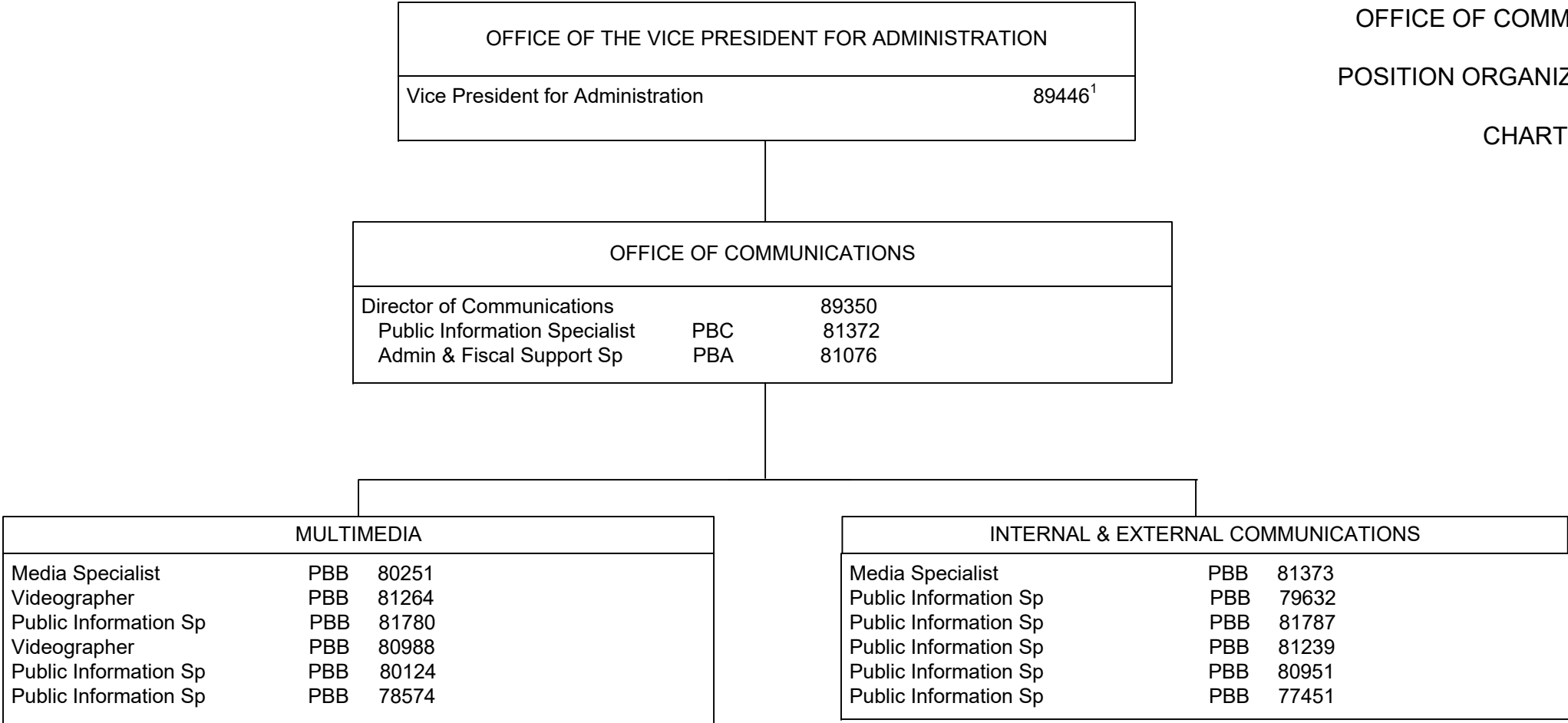
¹ Excluded from position count
* Positions appropriated to Manoa, reflected organizationally on this chart

Perm
General Fund 11.00 (SW)
General Fund 7.00 (MA*)

STATE OF HAWAI'I
UNIVERSITY OF HAWAI'I
SYSTEMWIDE ADMINISTRATION
VICE PRESIDENT FOR ADMINISTRATION
OFFICE OF COMMUNICATIONS

POSITION ORGANIZATION CHART

CHART III

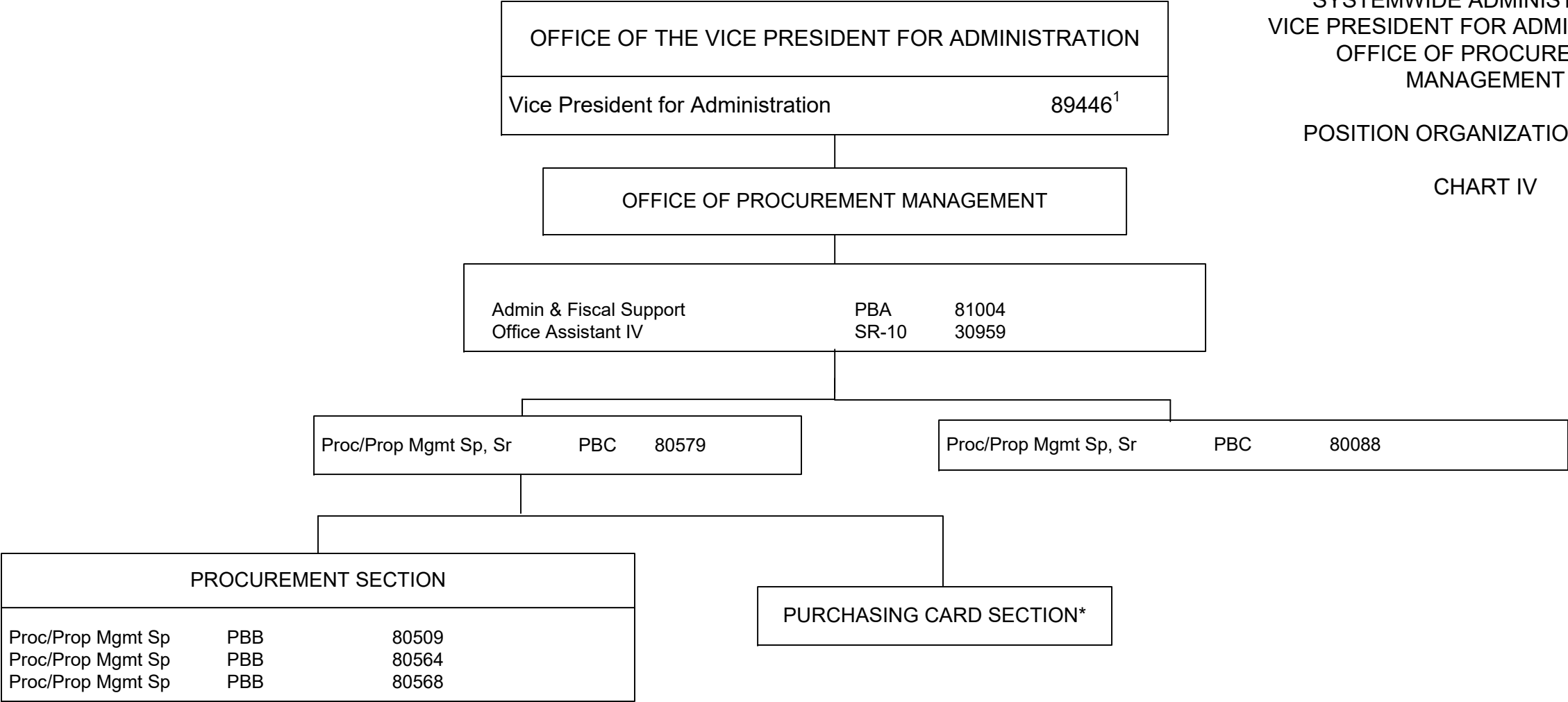


¹ Excluded from position count

STATE OF HAWAI'I
UNIVERSITY OF HAWAI'I
SYSTEMWIDE ADMINISTRATION
VICE PRESIDENT FOR ADMINISTRATION
OFFICE OF PROCUREMENT
MANAGEMENT

POSITION ORGANIZATION CHART

CHART IV



¹ Excluded from position count

* Includes temporary positions

STATE OF HAWAI‘I
UNIVERSITY OF HAWAI‘I
SYSTEMWIDE ADMINISTRATION
VICE PRESIDENT FOR ADMINISTRATION
OFFICE OF UNIVERSITY RISK
MANAGEMENT

POSITION ORGANIZATION CHART

CHART V

| | | |
|---|--|--------------------|
| OFFICE OF THE VICE PRESIDENT FOR ADMINISTRATION | | |
| Vice President for Administration | | 89446 ¹ |

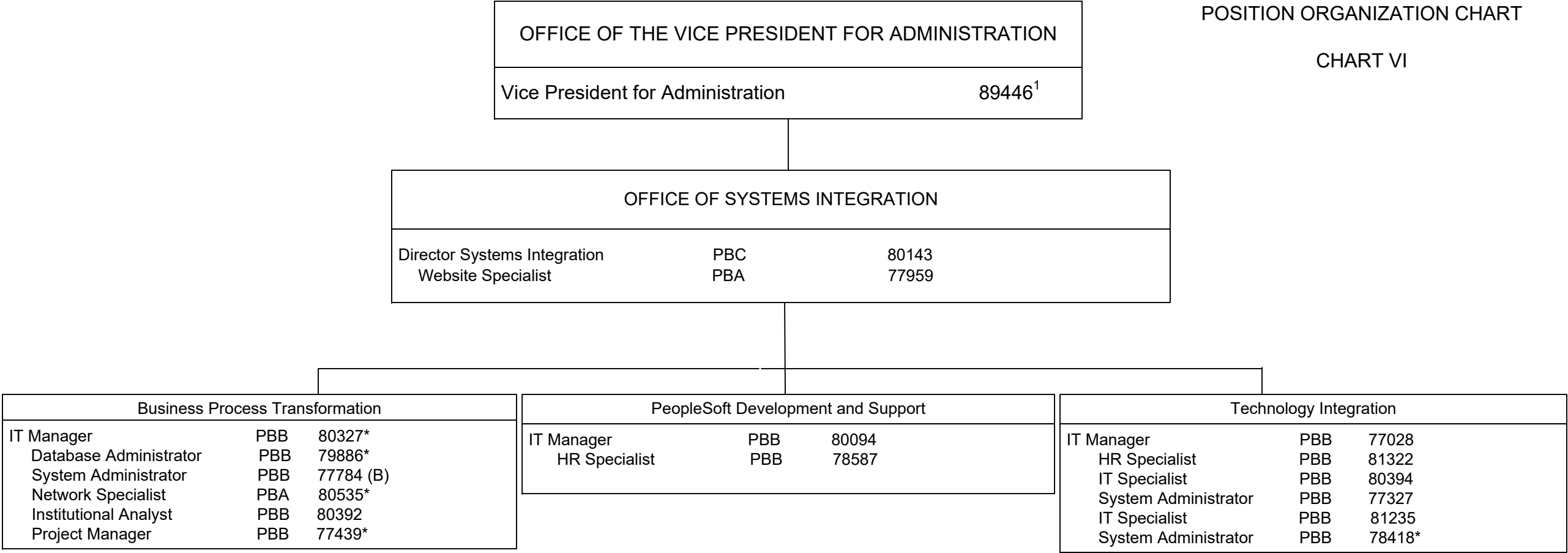
| | | |
|--------------------------------------|-------|--------|
| OFFICE OF UNIVERSITY RISK MANAGEMENT | | |
| Director of Risk Management | | 89162 |
| Secretary III | SR-16 | 900066 |
| Risk Management Sp | PBB | 80642 |
| Human Resources Sp | PBB | 80493 |
| Risk Management Sp | PBB | 78819 |

¹ Excluded from position count

STATE OF HAWAI'I
UNIVERSITY OF HAWAI'I
SYSTEMWIDE ADMINISTRATION
VICE PRESIDENT FOR ADMINISTRATION
OFFICE OF SYSTEMS INTEGRATION

POSITION ORGANIZATION CHART

CHART VI



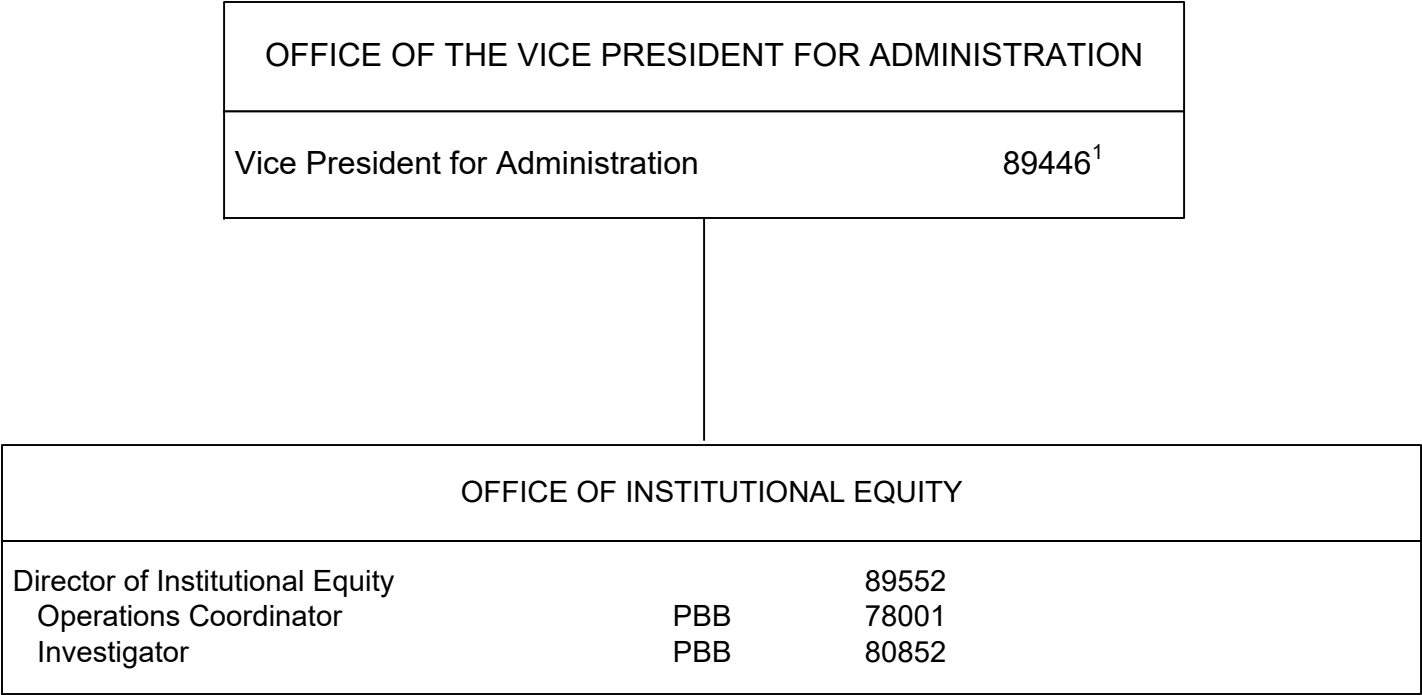
¹ Excluded from position count
* Positions appropriated to Manoa, reflected organizationally on this chart

| | |
|------------------|-------------|
| | <u>Perm</u> |
| General Fund | 10.00 (SW) |
| General Fund | 5.00 (MA)* |
| Special Fund (B) | 1.00 (SW) |

STATE OF HAWAI'I
UNIVERSITY OF HAWAI'I
SYSTEMWIDE ADMINISTRATION
VICE PRESIDENT FOR ADMINISTRATION
OFFICE OF INSTITUTIONAL EQUITY

POSITION ORGANIZATION CHART

CHART VII



¹ Excluded from position count

| | | |
|---|--|--------------------|
| OFFICE OF THE VICE PRESIDENT FOR ADMINISTRATION | | |
| Vice President for Administration | | 89446 ¹ |

| | | |
|-------------------------------|-----|-------|
| OFFICE OF SUSTAINABILITY | | |
| Director of Energy Management | | 89524 |
| Operations Coordinator | PBB | 78394 |
| Operations Coordinator | PBA | 80991 |

STATE OF HAWAI‘I
UNIVERSITY OF HAWAI‘I
SYSTEMWIDE ADMINISTRATION
VICE PRESIDENT FOR ADMINISTRATION
OFFICE OF SUSTAINABILITY

POSITION ORGANIZATION CHART

CHART VIII

¹ Excluded from position count

STATE OF HAWAI'I
UNIVERSITY OF HAWAI'I
SYSTEMWIDE ADMINISTRATION
VICE PRESIDENT FOR ADMINISTRATION
OFFICE OF CAMPUS OPERATIONS & FACILITIES

POSITION ORGANIZATION CHART

CHART IX

| OFFICE OF THE VICE PRESIDENT FOR ADMINISTRATION | | |
|---|--|--------------------|
| Vice President for Administration | | 89446 ¹ |

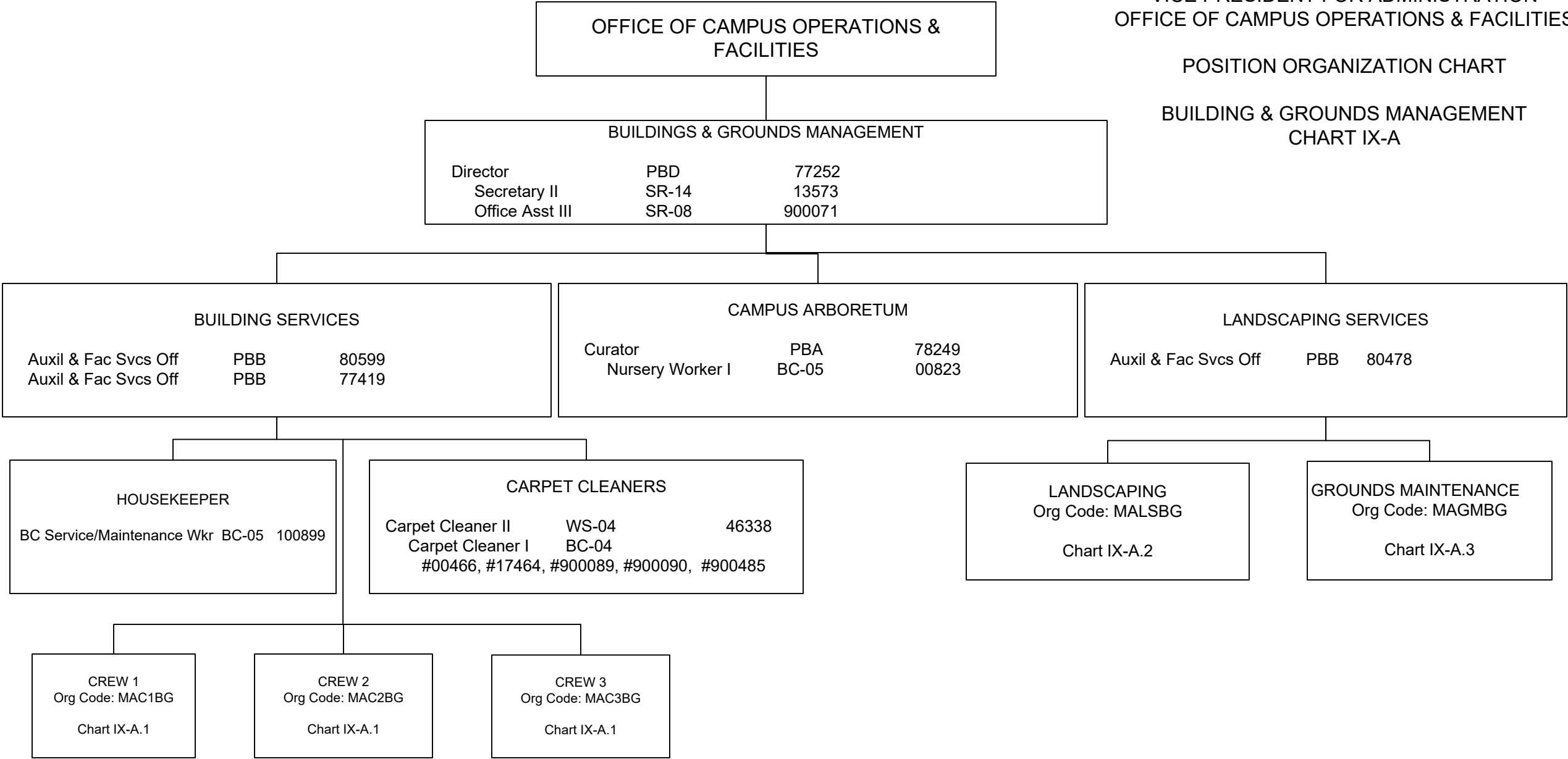
| OFFICE OF CAMPUS OPERATIONS & FACILITIES | | |
|--|-----|-------|
| Director | PBD | 78777 |
| Auxil & Fac Svcs Mgr | PBC | 81250 |
| Auxil & Fac Svcs Off | PBB | 81505 |
| Registered Architect | PBB | 80790 |

| | | | | | | | | |
|------------------------|-----|-------|---------------------|-----|-------|------------------------|-----|----------------|
| FACILITIES SAFETY | | | WAREHOUSE/INVENTORY | | | FIRE SAFETY | | |
| Environ & Hlth Sfty Sp | PBB | 78121 | Auxil & Fac Svc Off | PBB | 81774 | Environ & Hlth Sfty Sp | PBC | 80325 |
| | | | Auxil & Fac Svc Off | PBA | 79056 | Environ & Hlth Sfty Sp | PBB | #77466, #81796 |
| | | | Auxil & Fac Svc Off | PBA | 80601 | | | |

| | | | | | | | | | |
|--------------------------|-----|-------|----------------------|-------|-------|-------------------------------------|--|------------|--|
| WORK COORDINATION CENTER | | | PROFESSIONAL SUPPORT | | | BUILDINGS AND GROUNDS MANAGEMENT | | SHOPS | |
| Auxil & Fac Svcs Off | PBB | 80487 | Mechanical Engineer | PBC | 81053 | CHART IX-A | | CHART IX-B | |
| Auxil & Fac Svcs Off | PBB | 78973 | Secretary II | SR-14 | 43782 | | | | |
| Auxil & Fac Svcs Off | PBA | 77986 | Mechanical Engineer | PBB | 80532 | | | | |
| Auxil & Fac Svcs Off | PBA | 78974 | Mechanical Engineer | PBB | 81482 | | | | |
| | | | Engineer | PBB | 79557 | | | | |
| | | | Mechanical Engineer | PBA | 79399 | | | | |
| | | | Auxil & Fac Svcs Off | PBB | 81453 | | | | |
| | | | Registered Engineer | PBC | 81097 | | | | |
| | | | Registered Engineer | PBB | 77675 | | | | |
| | | | Engineer | PBB | 80441 | | | | |
| | | | Engineer | PBB | 78915 | | | | |

¹ Excluded from position count

* All positions on Chart IX appropriated to Manoa, reflected organizationally on this chart

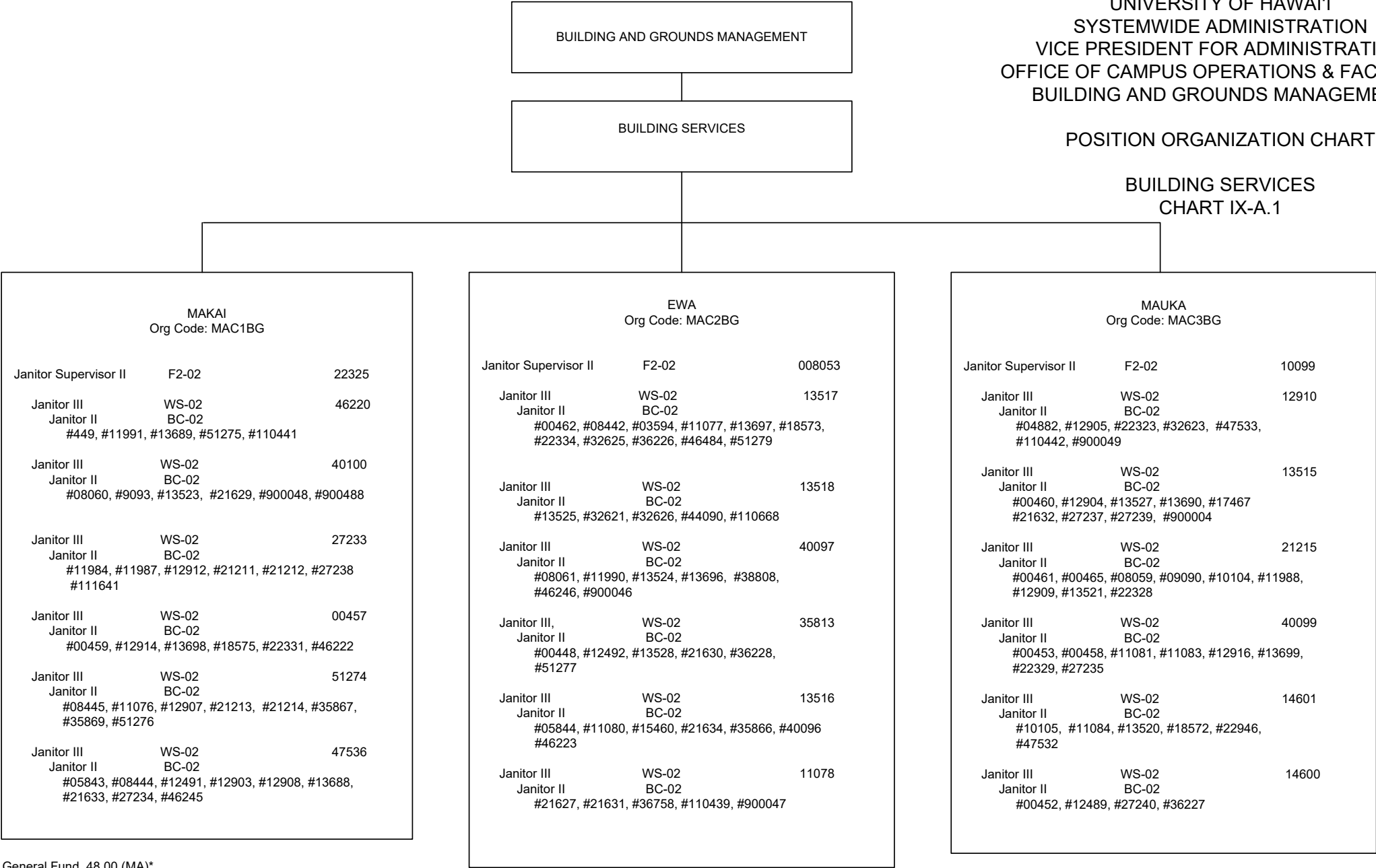


¹ Excluded from position count
* All positions on Chart IX-A appropriated to Manoa, reflected organizationally on this chart

STATE OF HAWAI'I
UNIVERSITY OF HAWAI'I
SYSTEMWIDE ADMINISTRATION
VICE PRESIDENT FOR ADMINISTRATION
OFFICE OF CAMPUS OPERATIONS & FACILITIES
BUILDING AND GROUNDS MANAGEMENT

POSITION ORGANIZATION CHART

BUILDING SERVICES
CHART IX-A.1



General Fund 48.00 (MA)*

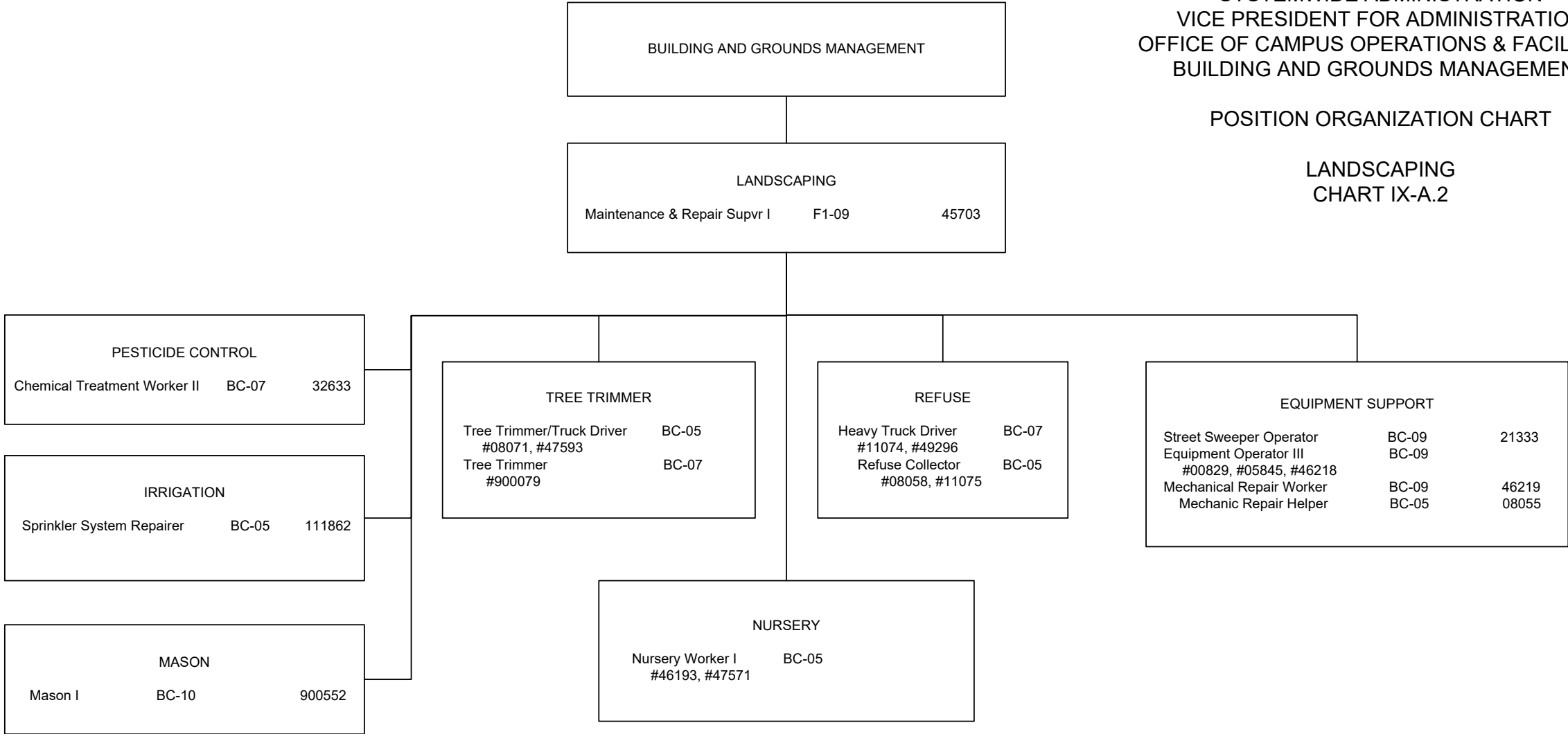
General Fund 48.00 (MA)*

General Fund 50.00 (MA)*

* All positions on Chart IX-A.1 appropriated to Manoa, reflected organizationally on this chart

STATE OF HAWAI'I
UNIVERSITY OF HAWAI'I
SYSTEMWIDE ADMINISTRATION
VICE PRESIDENT FOR ADMINISTRATION
OFFICE OF CAMPUS OPERATIONS & FACILITIES
BUILDING AND GROUNDS MANAGEMENT

POSITION ORGANIZATION CHART



General Fund

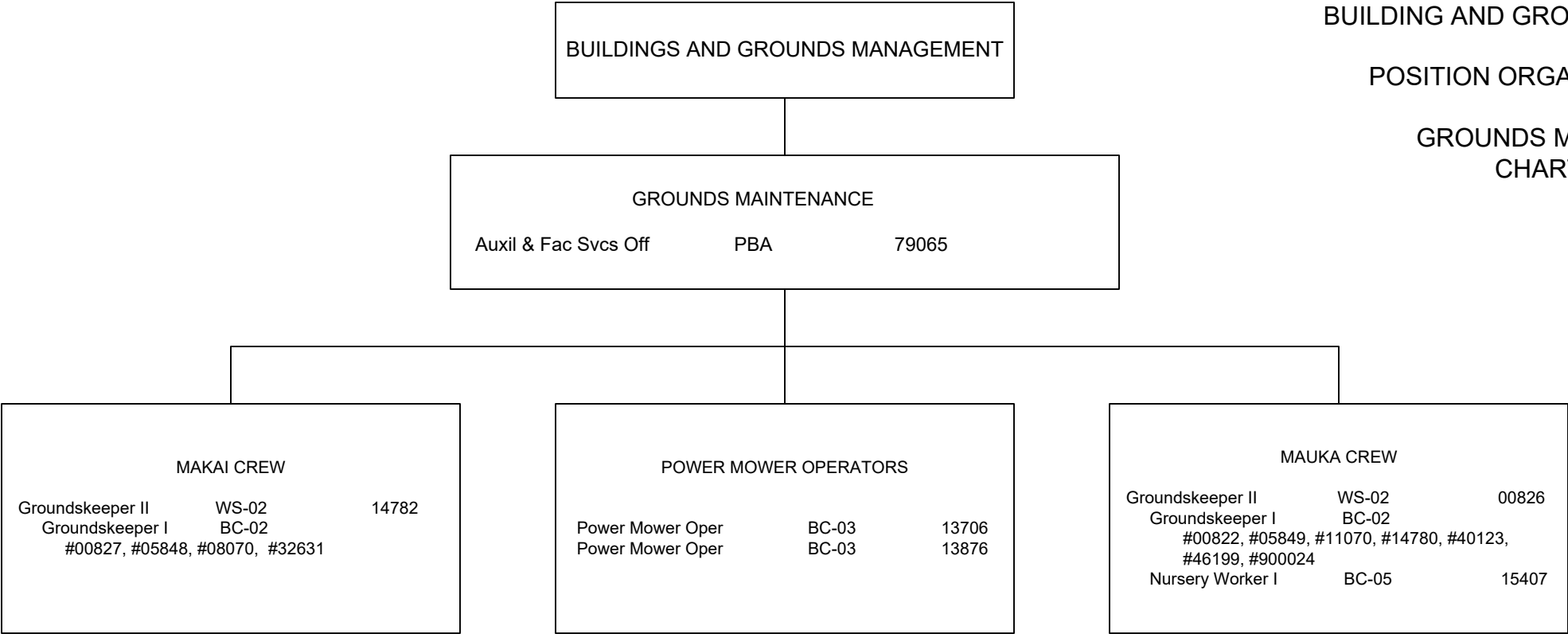
Perm
19.00 (MA)*

* All positions on Chart IX-A.2 appropriated to Manoa, reflected organizationally on this chart

STATE OF HAWAI'I
UNIVERSITY OF HAWAI'I
SYSTEMWIDE ADMINISTRATION
VICE PRESIDENT FOR ADMINISTRATION
OFFICE OF CAMPUS OPERATIONS & FACILITIES
BUILDING AND GROUNDS MANAGEMENT

POSITION ORGANIZATION CHART

GROUNDS MAINTENANCE
CHART IX-A.3

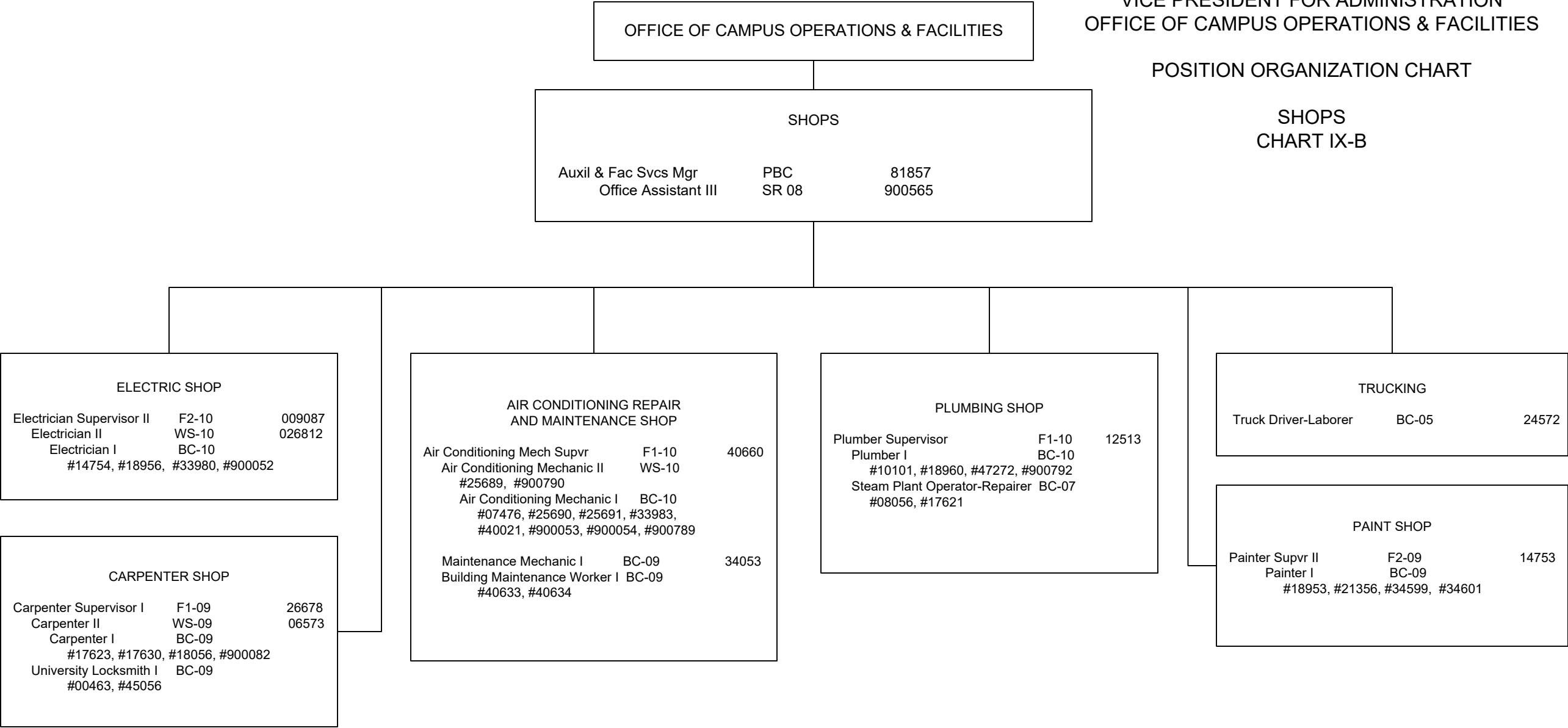


* All positions on Chart IX-A.3 appropriated to Manoa, reflected organizationally on this chart

STATE OF HAWAI'I
UNIVERSITY OF HAWAI'I
SYSTEMWIDE ADMINISTRATION
VICE PRESIDENT FOR ADMINISTRATION
OFFICE OF CAMPUS OPERATIONS & FACILITIES

POSITION ORGANIZATION CHART

SHOPS
CHART IX-B

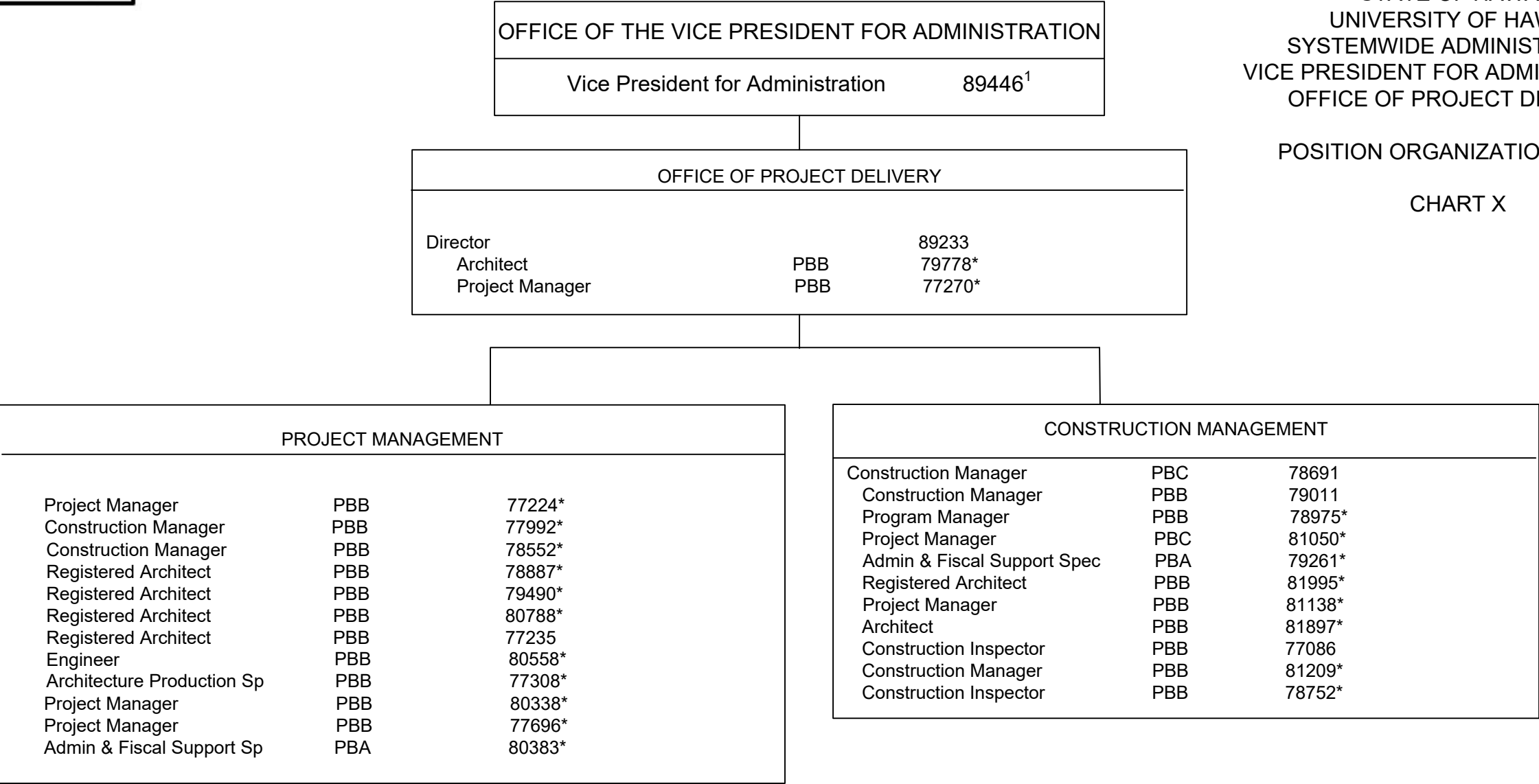


* All positions on Chart IX-B appropriated to Manoa, reflected organizationally on this chart

STATE OF HAWAI'I
UNIVERSITY OF HAWAI'I
SYSTEMWIDE ADMINISTRATION
VICE PRESIDENT FOR ADMINISTRATION
OFFICE OF PROJECT DELIVERY

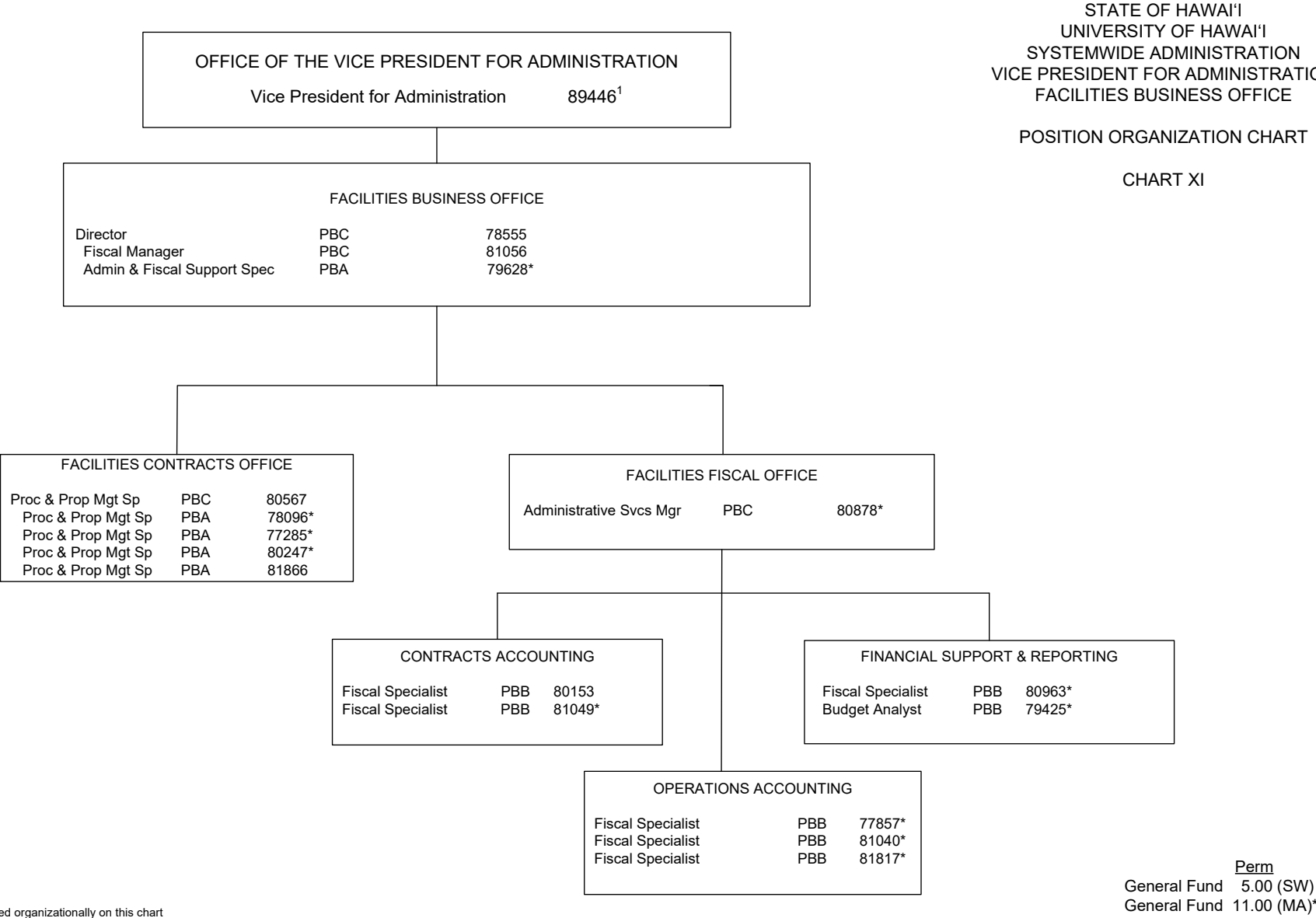
POSITION ORGANIZATION CHART

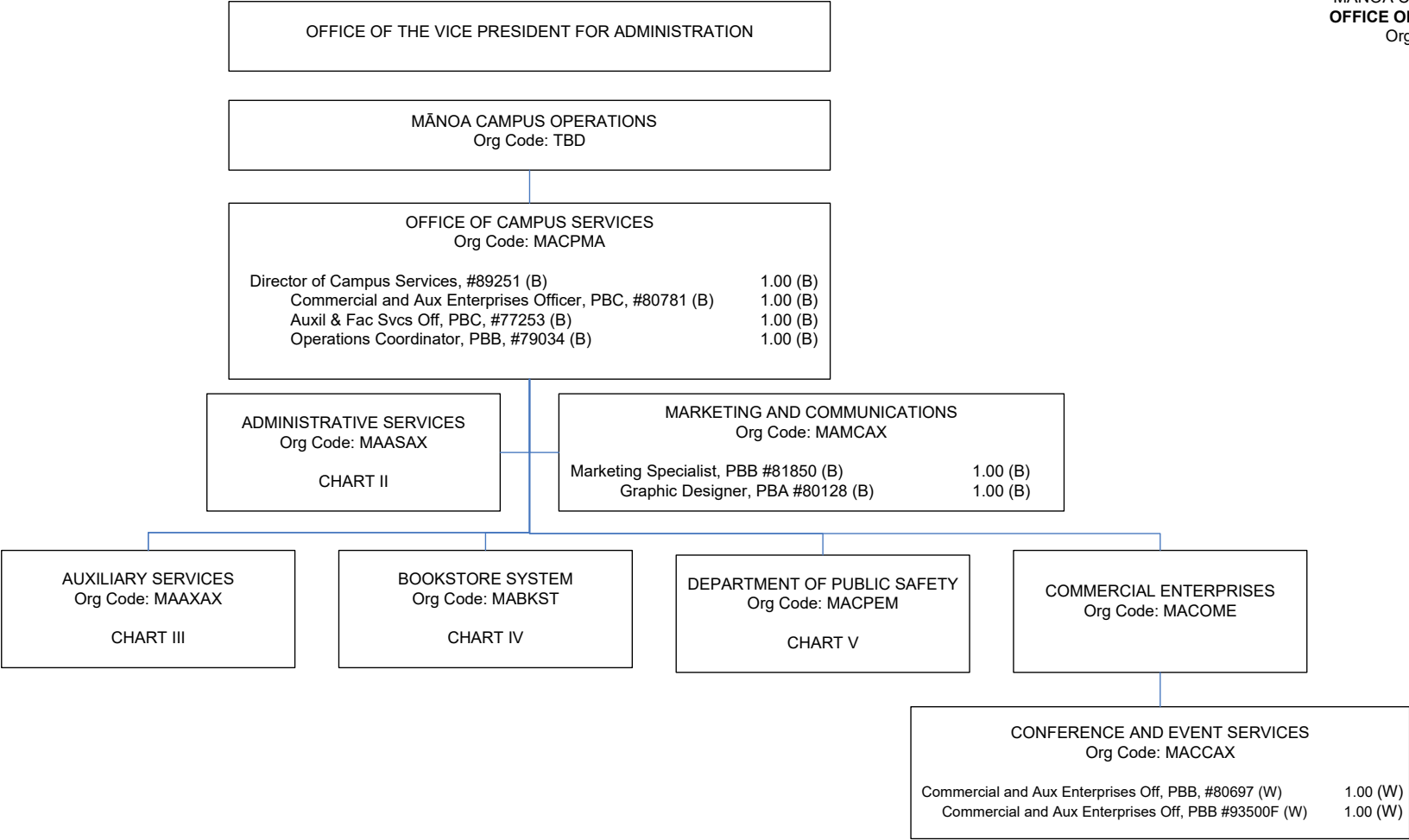
CHART X



¹ Excluded from position count
* Positions appropriated to Manoa, reflected organizationally on this chart

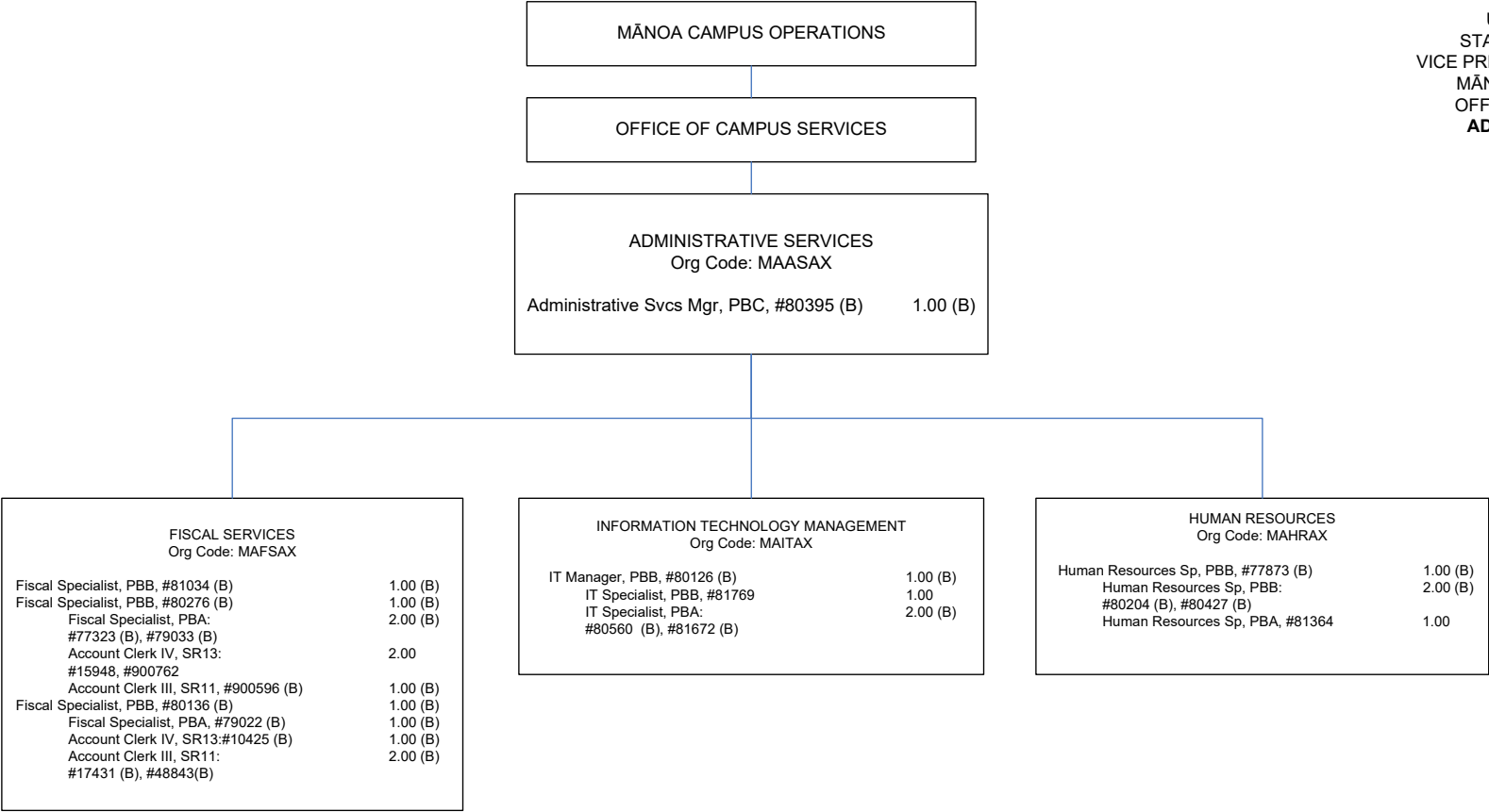
Perm
General Fund 5.00 (SW)
General Fund 21.00 (MA)*



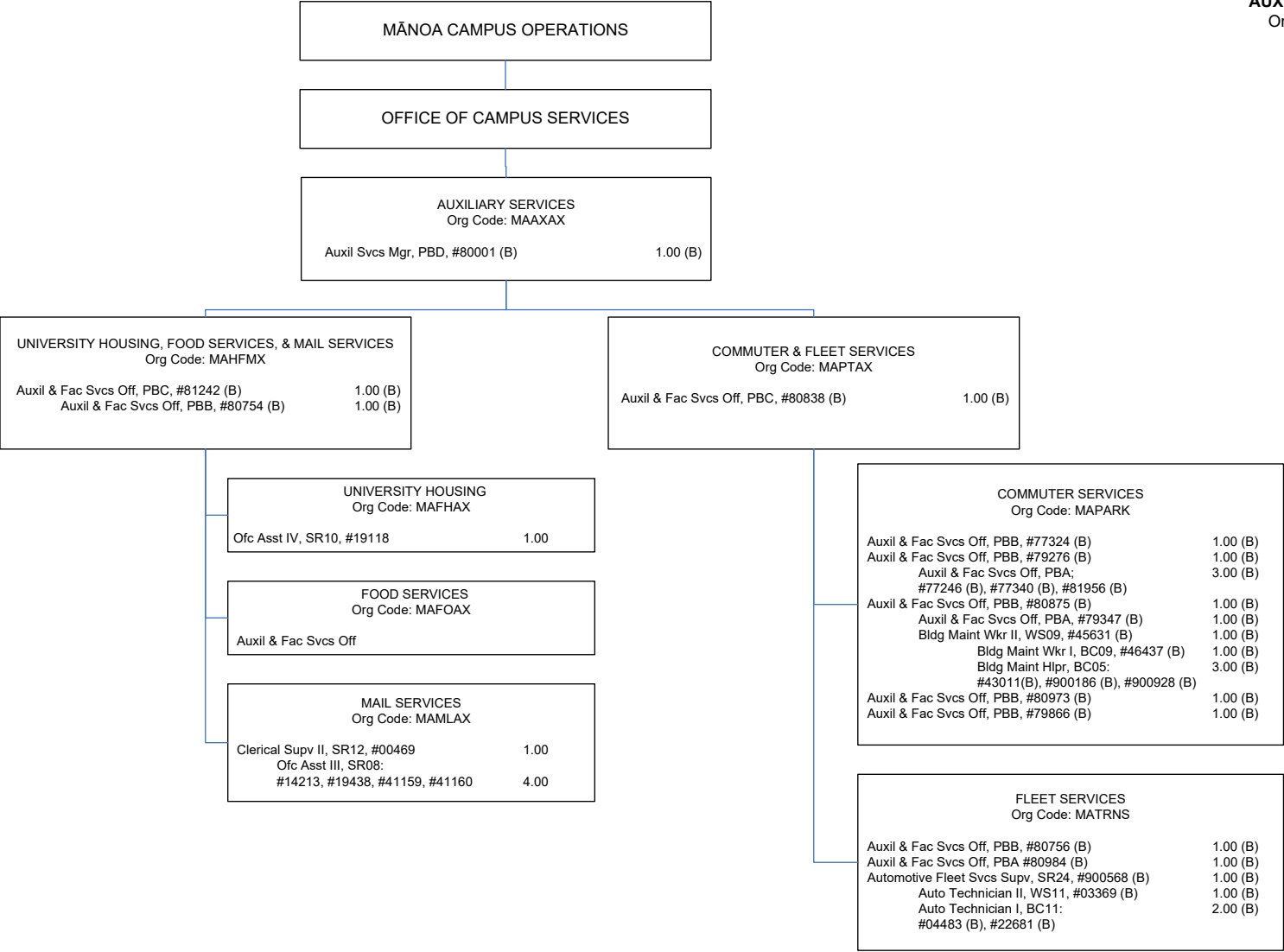


1/ To be established
(B) Special fund position abolished but retained count: #13644

| CHART TOTAL: | PERM | TEMP |
|----------------------|------|------|
| Special Funds (B): | 7.00 | -- |
| Revolving Funds (W): | 2.00 | -- |

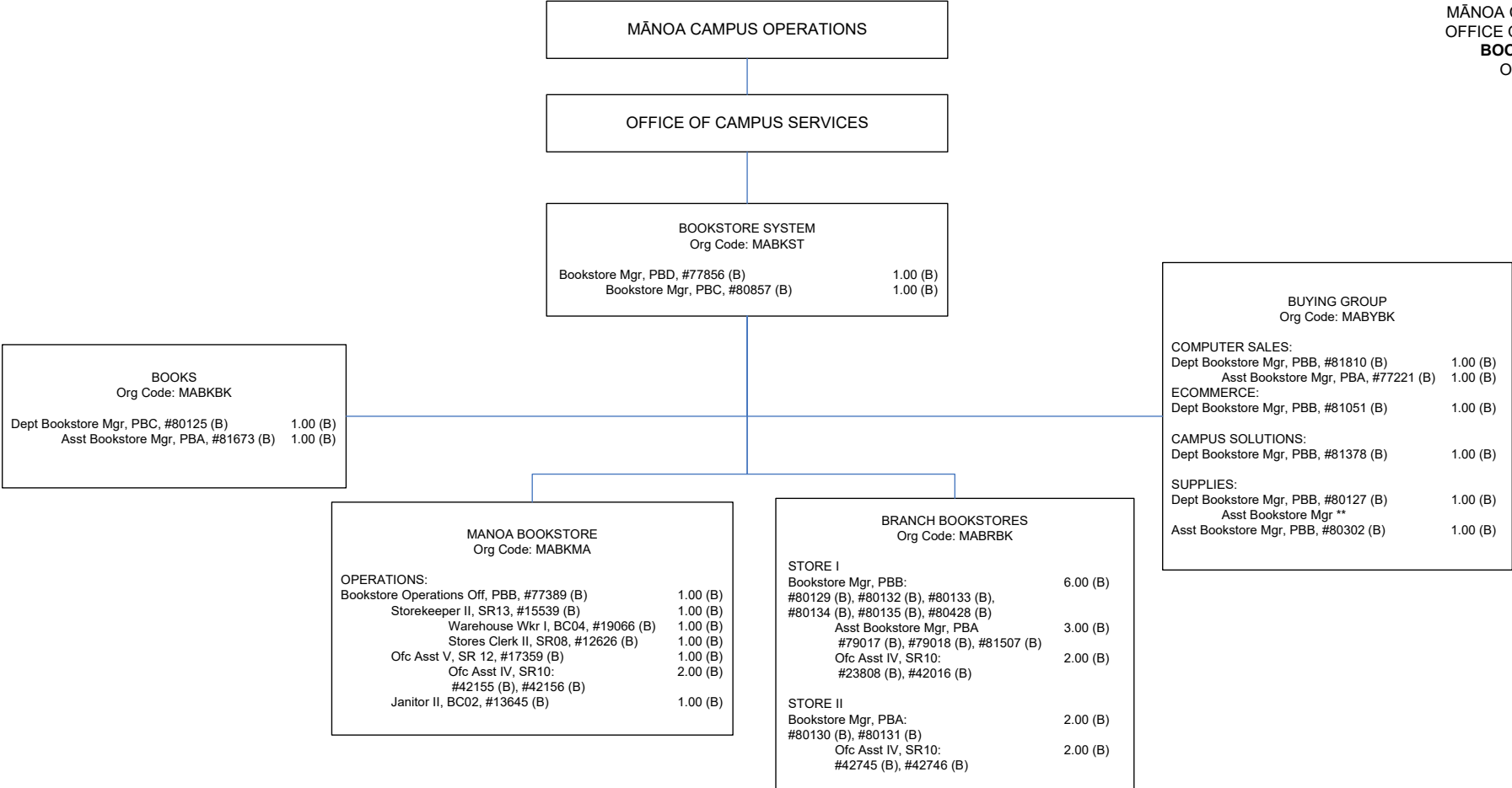


(B) Special fund positions abolished but retained position count: #14867, #14988, #900127



(A) General fund position abolished but retained count: #41161

| CHART TOTAL: | PERM | TEMP |
|--------------------|-------|------|
| General Funds: | 7.00 | -- |
| Special Funds (B): | 24.00 | -- |



(B) Special fund positions abolished but retained count: #06801, #12627, #13642, #13643, #13944, #13945, #15057, #15538, #17356, #17357, #17358, #17360, #17361, #17362, #17651, #18089, #19065, #22931, #23809, #24637, #24959, #26727, #27843, #27876, #27887, #32675, #35138, #47164, #94356F

**Represents a supervisory layer that exists but is deleted due to legislative abolishment

| | | |
|--------------------|-------|------|
| CHART TOTAL: | PERM | TEMP |
| General Funds: | 0.00 | -- |
| Special Funds (B): | 62.00 | -- |

MĀNOA CAMPUS OPERATIONS

OFFICE OF CAMPUS SERVICES

| | | |
|---|--|-------|
| DEPARTMENT OF PUBLIC SAFETY Org Code: MACPEM | | |
| Auxil & Fac Svc Mgr, PBD, #80477 | | 1.00 |
| Admin & Fiscal Support Sp, PBA, #81244 | | 1.00 |
| Safety/Security Sp, PBB, #78184, #78327, #78865, #79691, #79836 | | 5.00 |
| Auxil & Fac Svcs Off, PBC, #81189 | | 1.00 |
| Admin & Fiscal Support Sp, PBA, #81709 | | 1.00 |
| Auxil & Fac Svc Off, PBB, #81195 | | 1.00 |
| University Security Officer III, SR 18 #03574, #13852, #39544, #48514, #111648, #900578, #900697, #900745, #900761 | | 9.00 |
| University Security Off II, SR16, #13542, #22487, #24575, #36659, #36667, #49280, #110514, #900772 | | 8.00 |
| University Security Off I, SR14, #03575, #24542, #24576, #28609, #28610, #29174, #30526, #36660, #36661, #39488, #39491, #45375, #48516, #49281, #900313, #900316, #900318, #900319, #900320, #900566, #900757, #900760, #900765, #900766, #900767, #900768, #900769, #900770, #900771, #900773, #900775, #900776, #900777, #900778 | | 34.00 |