

**OFFICE OF THE VICE PRESIDENT FOR
RESEARCH AND INNOVATION**

STATE OF HAWAI'I
UNIVERSITY OF HAWAI'I
OFFICE OF THE VICE PRESIDENT
FOR RESEARCH AND INNOVATION

POSITION ORGANIZATION CHART
SUMMARY

**FISCAL AND ADMINISTRATIVE
OPERATIONS**
Chart I

STEM PRE-ACADEMY
Chart I

COST STUDIES AND DATA ANALYTICS
Chart I

ACADEMY FOR CREATIVE MEDIA
Chart I

RESEARCH SUPPORT CENTER
Chart I

**OFFICE OF STRATEGIC HEALTH
INITATIVES**
Chart I

OFFICE OF RESEARCH SERVICES

Information Systems Services
Financial Compliance
Contracts and Grants Administration
Extramural Funds Accounting

Chart II

OFFICE OF RESEARCH COMPLIANCE

Human Studies Program
Animal Welfare Program
Biosafety Program
Animal and Veterinary Services Program
Office of Research Integrity
Office of Export Controls

Chart III

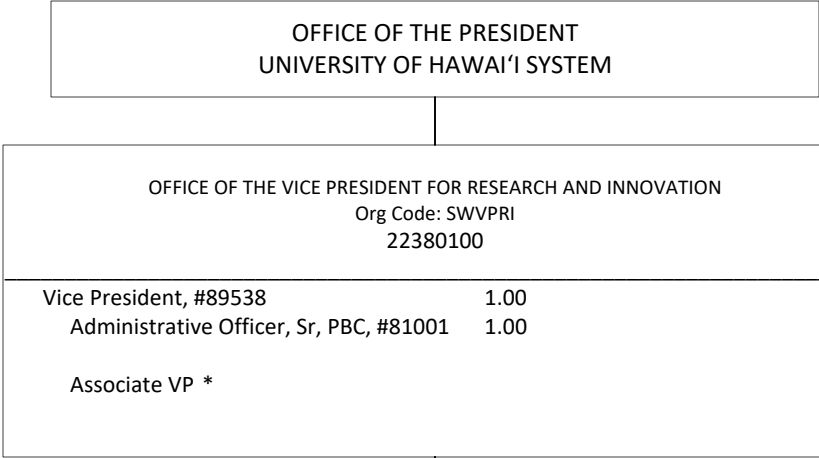
**OFFICE OF INNOVATION AND
COMMERCIALIZATION**

Office of Technology Transfer
UH Ventures

Chart IV

APPLIED RESEARCH LABORATORY

Chart V



FISCAL AND ADMINISTRATIVE OPERATIONS 22380100	
Administrative Officer, Sr, PBC, #80038	1.00
Administrative Officer, Sr, PBB, #81901	1.00 (B)
Administrative Officer, PBB, #77571	1.00
Adm & Fisc Sp, PBA, #78836	1.00 (W)
Human Res Spc. Sr, PBB, #81885	1.00

STEM PRE-ACADEMY 22380601	
Administrative Services Manager, PBC, #77694	1.00
Web Developer, PBB, #80151	1.00
Program Specialist, PBB, #78459	1.00
Program Manager, PBB, #78020	1.00
Program Specialist, PBB, #77294	1.00
Program Specialist, PBA, #77862	1.00

COST STUDIES AND DATA ANALYTICS 22380100	
Administrative Services Manager, PBD, #77804	1.00
Fiscal Specialist, PBB, #81802	1.00

ACADEMY FOR CREATIVE MEDIA 22380602	
Director, #89557	1.00
Administrative Officer, PBB, #80272	1.00

RESEARCH SUPPORT CENTER 22380100	
Administrative Services Manager, PBD, #81645	1.00
Administrative Officer, PBB, #80379	1.00 (W)

OFFICE OF STRATEGIC HEALTH INITIATIVES	
Administrative Services Manager, PBD, #77672	1.00 **
Institutional Support, PBB, #77119	1.00 (W) *

16.00 Perm
3.00 Perm (W)
1.00 Perm (B)
1.00 Temp (G) **

* position to be redescribed

OFFICE OF THE VICE PRESIDENT

FOR RESEARCH AND INNOVATION

OFFICE OF RESEARCH SERVICES

22380200

Director, #89006	1.00
Admin Off, Senior, PBB, #81798	1.00 (W)
Admin Off, Senior, PBB, #81982	1.00
Office Asst IV, SR-10, #15410	1.00

INFORMATION SYSTEMS SERVICES

IT Manager, PBC, #78631	1.00
IT Specialist Sr, PBC, #78837	1.00 (W)
IT Specialist, PBB, #81777	1.00

FINANCIAL COMPLIANCE

Fiscal Manager, PBD, #81389	1.00
Fiscal Sp Sr, PBC, #81017	1.00
Fiscal Sp, PBB, #78800	1.00 (W)

CONTRACTS & GRANTS ADMINISTRATION

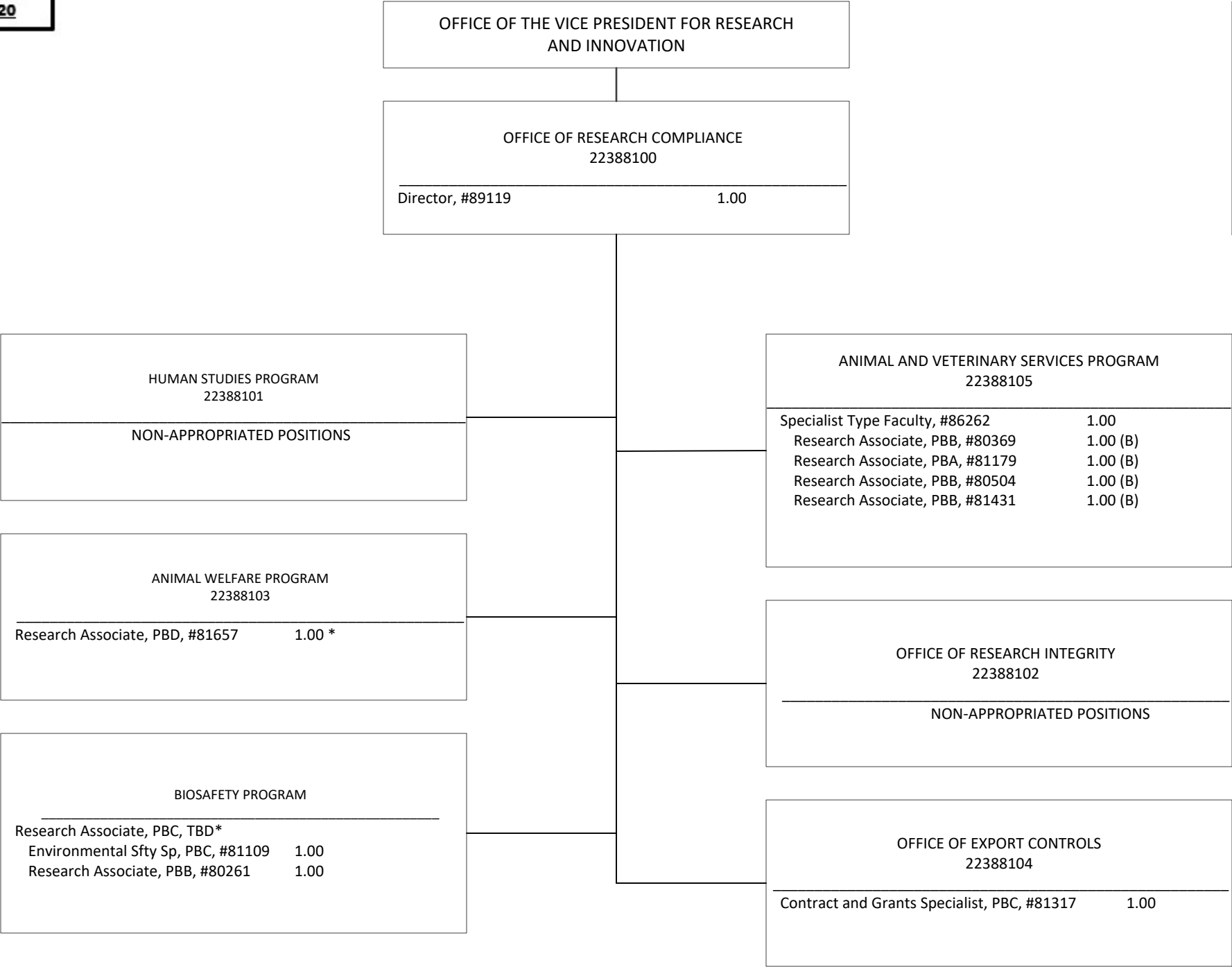
Con & Grt Spc, PBC, #78632	1.00
Adm & Fis Sp, PBA, #78839	1.00 (W)
Adm & Fis Sp, PBA, #78635	1.00
Adm & Fis Sp, PBA, #78010	1.00
Con & Grt Sp, PBB, #81471	1.00
Con & Grt Sp, PBB, #81259	1.00
Con & Grt Sp, PBB, #80976	1.00 (W)
Con & Grt Sp, PBB, #79125	1.00
Con & Grt Sp, PBB, #81940	1.00
Con & Grt Sp, PBC, #80581	1.00
Con & Grt Sp, PBB, #80808	1.00
Con & Grt Sp, PBB, #81139	1.00
Con & Grt Sp, PBB, #78029	1.00
Con & Grt Sp, PBC, #77464	1.00 (W)
Con & Grt Sp, PBB, #80399	1.00 (W)
Con & Grt Sp, PBB, #81652	1.00 (W)

EXTRAMURAL FUNDS ACCOUNTING

Fiscal Manager, PBC, #81930	1.00
Fiscal Sp, PBB, #79159	1.00
Fiscal Sp, PBB:	2.00
#78363 (1.00), #78637 (1.00)	
Fiscal Sp, PBB:	9.00
#80145 (1.00), #80138 (1.00)	
#81961 (1.00), #80147 (1.00)	
#78361 (1.00), #80139 (1.00)	
#81688 (1.00), #80195 (1.00)	
#78618 (1.00)	
Fiscal Sp, PBB, #78369	1.00 (W)
Fiscal Sp, PBB, #78634	1.00 (W)
Adm & Fis Supp Sp, PBA, #78636	1.00
Fiscal Manager, PBB, #80206	1.00
Fiscal Sp, PBB, #78838	1.00

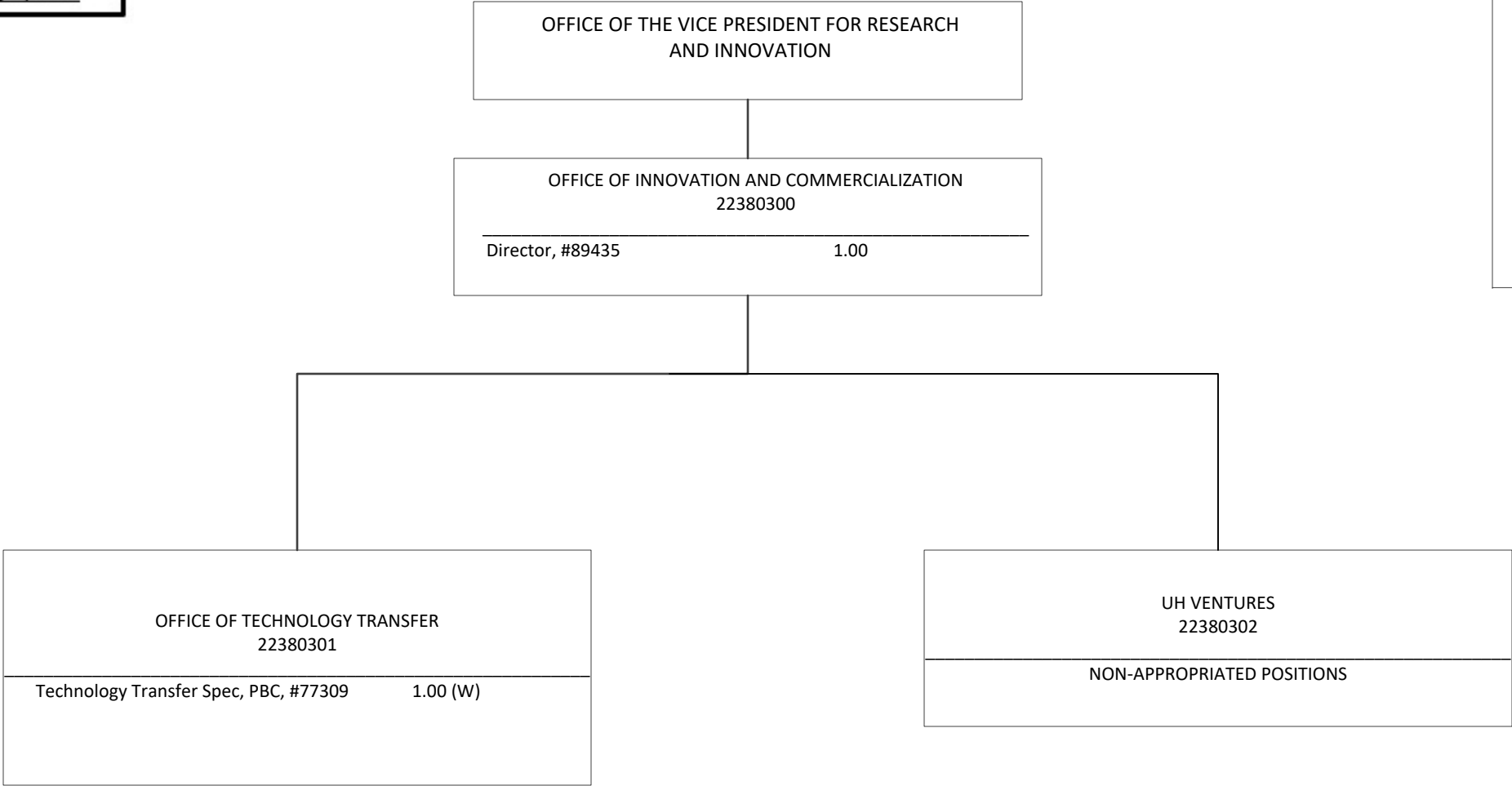
34.00 Perm

10.00 Perm (W)



6.00 Perm
4.00 Perm (B)

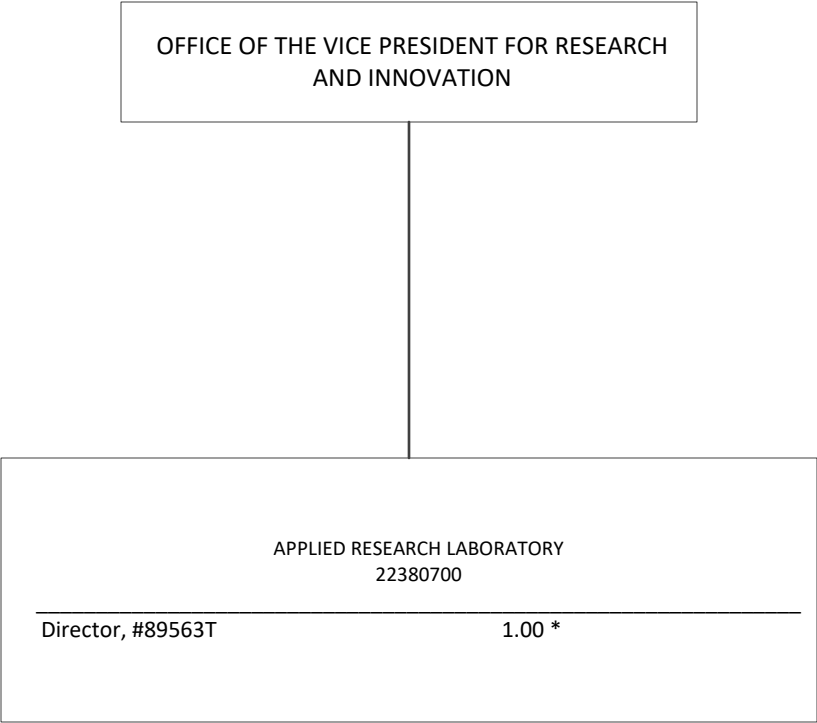
* to be redescribed



STATE OF HAWAI'I
UNIVERSITY OF HAWAI'I
OFFICE OF THE VICE PRESIDENT
FOR RESEARCH AND INNOVATION
OFFICE OF INNOVATION AND
COMMERCIALIZATION

POSITION ORGANIZATION CHART IV

1.00 Perm
1.00 Perm (W)



STATE OF HAWAI'I
UNIVERSITY OF HAWAI'I
OFFICE OF THE VICE PRESIDENT
FOR RESEARCH AND INNOVATION
APPLIED RESEARCH LABORATORY

POSITION ORGANIZATION CHART V

* Non-appropriated position