

OFFICE OF THE PRESIDENT

OFFICE OF THE PROVOST

COLLEGE OF ARTS, LANGUAGES & LETTERS
OFFICE OF THE DEAN
Org Code: TBD

Dean, #891981.00
Secretary III, SR-16, #35527*1.00
Associate Dean, #890231.00
Secretary III, SR-16, #216431.00
Academic Support, PBB (pending establishment)
Associate Dean, #892601.00
Secretary III, SR-16, #350331.00
Info, Events & Publications, PBB (pending establishment)
Program Specialist, PBB, #804851.00

STUDENT ACADEMIC SERVICES
Org Code:MACLAD

Director (appointed from faculty)
Secretary II, SR-14, #440551.00
Admin & Fiscal Support Specialist, PBA, #775141.00
Academic Advisor, PBB, #807191.00

Specialist Type Faculty:3.00
#70060, #83818, #84379

STATE OF HAWAI'I
UNIVERSITY OF HAWAI'I
UNIVERSITY OF HAWAI'I AT MĀNOA
OFFICE OF THE PROVOST
COLLEGE OF ARTS, LANGUAGES & LETTERS
Organization Chart
Chart I

DEPARTMENT TOTAL:PERMTEMP
General Funds:415.7519.00
Special Funds:1.00--

ADMINISTRATIVE SERVICES
Org Code: TBD

Admin Svcs Mgr, PBC, #802091.00
Admin Officer, PBB, #818711.00
Admin Svcs Mgr, PBC, #808281.00
Admin Officer, PBB:3.00
#78625, #80498, #81228,
Admin & Fiscal Supp Spec, PBB, #777151.00
Admin Officer, Senior, PBB, #81560*1.00
HR Spec, PBB, #78313, #811102.00
HR Spec, PBA, #798111.00
HR Assistant IV, SR-11, #446091.00
IT Specialist, PBB, #793861.00
IT Specialist, PBA, #813881.00

INSTRUCTIONAL UNITS
Org Code: TBD
CHART II

Academy for Creative Media
Department of American Studies
Department of Art & Art History
Department of Asian Studies
Department of Communicology
Department of East Asian Languages & Literatures
Department of English
Department of History
Department of Indo-Pacific Languages & Literatures
Department of Languages & Literatures of Europe & the Americas
Department of Linguistics
Department of Music
Department of Pacific Islands Studies
Department of Philosophy
Department of Religion
Department of Second Language Studies
Department of Theatre & Dance

SCHOOL OF PACIFIC & ASIAN STUDIES
Org Code: MACPAS
CHART III

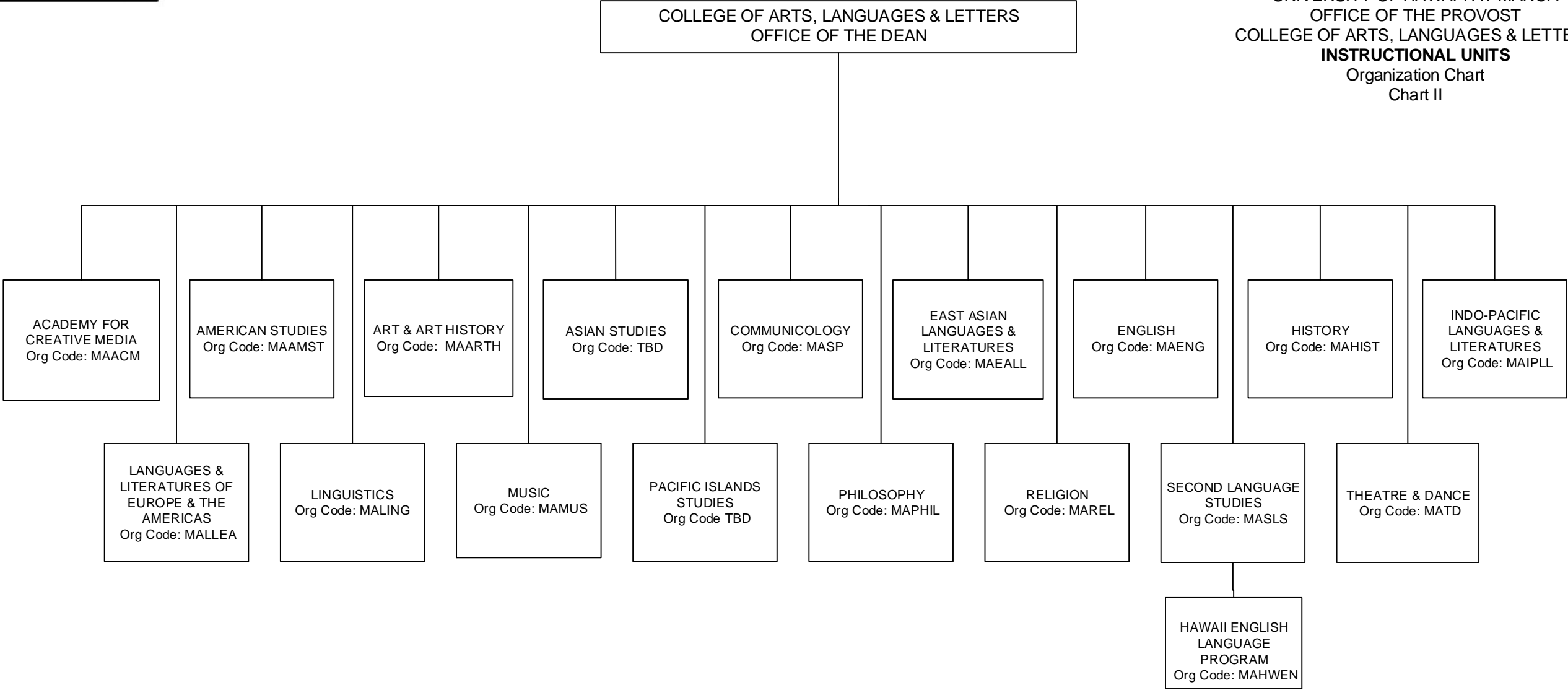
Center for Chinese Studies
Center for Japanese Studies
Center for Korean Studies
Center for Okinawan Studies
Center for Pacific Islands Studies
Center for Philippine Studies
Center for South Asian Studies
Center for Southeast Asian Studies

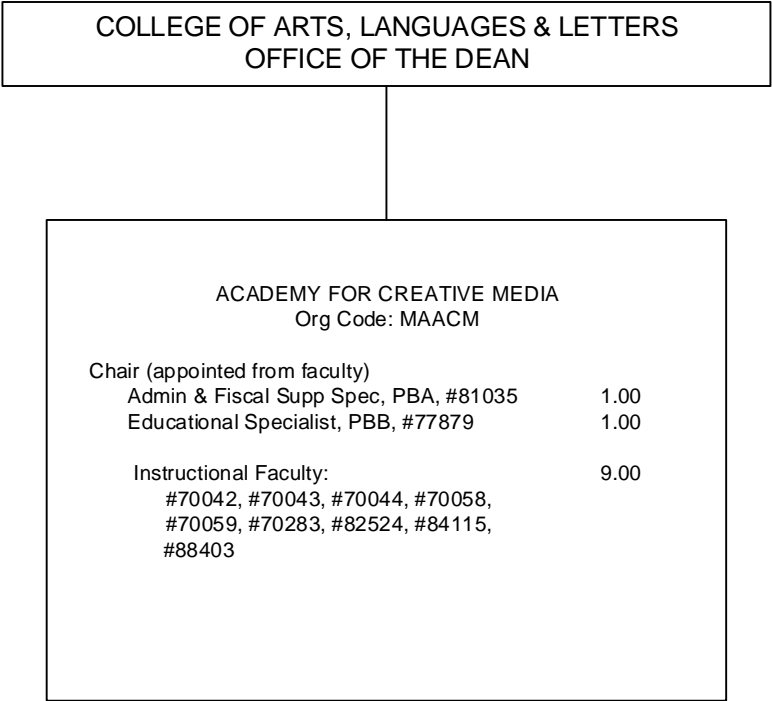
CENTERS
Org Code: TBD
CHART IV

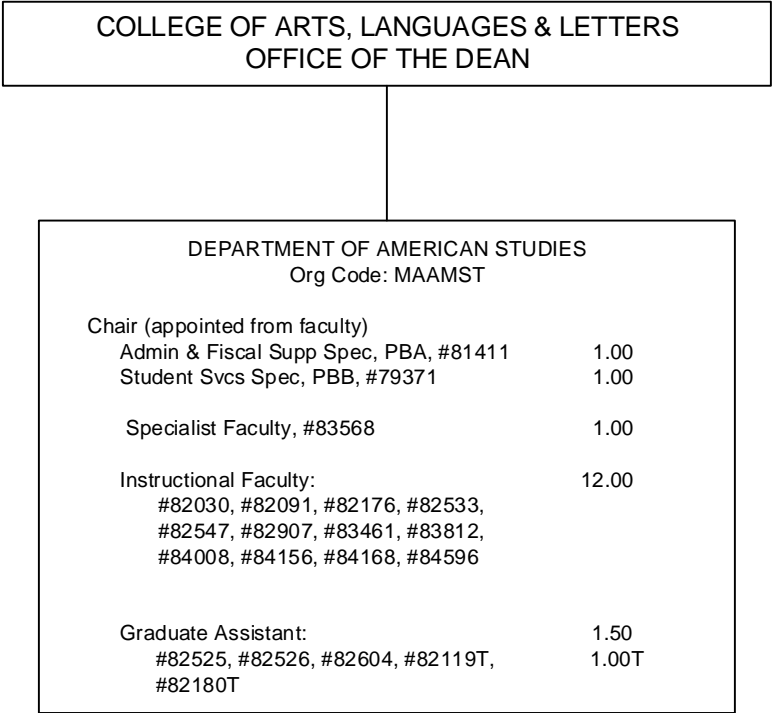
Center for the Arts
Center for Biographical Research
Center for Interpretation & Translation Studies
Center for Language & Technology
Center for the Study of Human Language
Mānoa Center for the Humanities & Civic Engagement
Uehiro Academy for Philosophy and Ethics in Education

* Pending redescription

CHART TOTAL:PERMTEMP
General Funds:27.00--





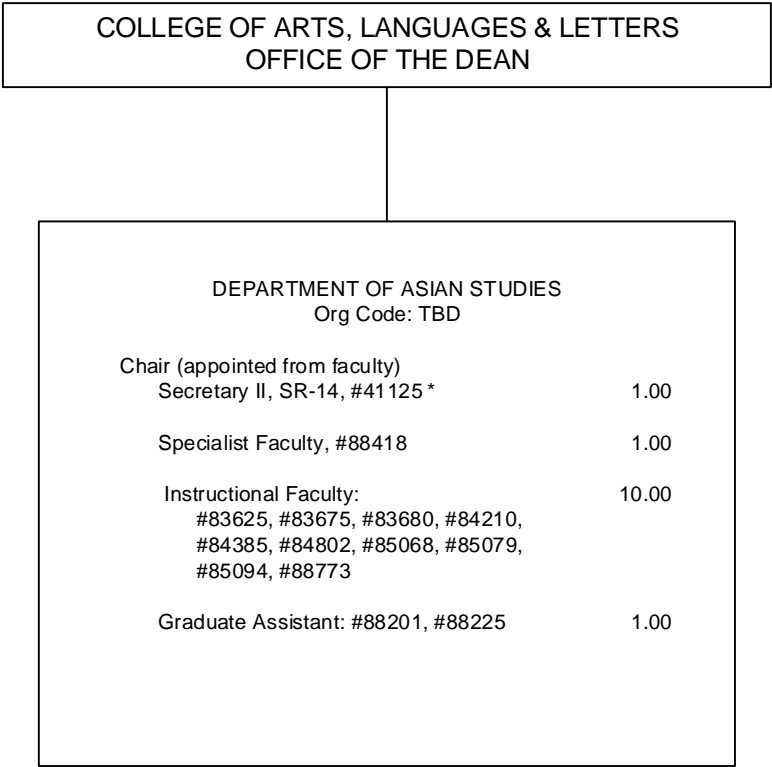


STATE OF HAWAI'I
UNIVERSITY OF HAWAI'I
UNIVERSITY OF HAWAI'I AT MĀNOA
OFFICE OF THE PROVOST
COLLEGE OF ARTS, LANGUAGES & LETTERS
DEPARTMENT OF AMERICAN STUDIES
Organization Chart
Chart II-B

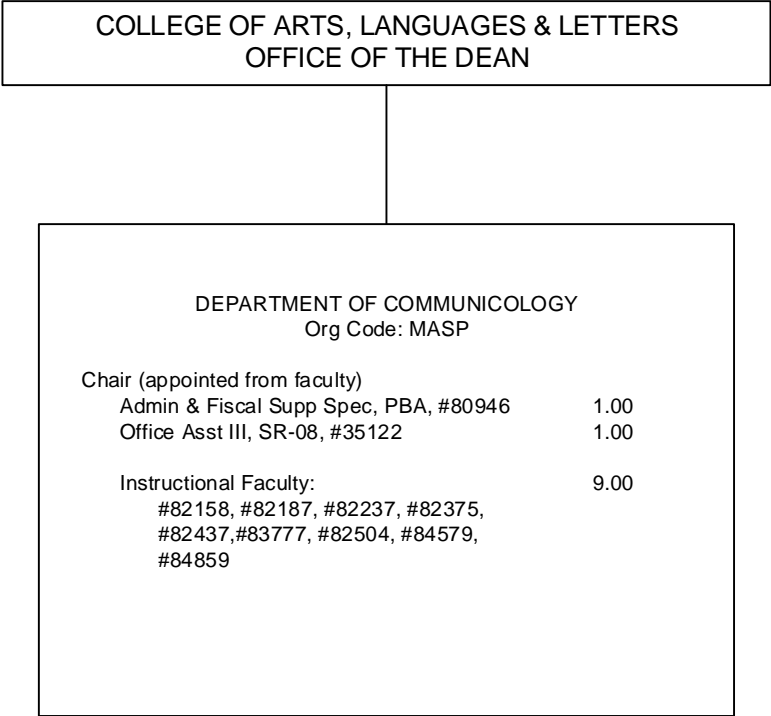
COLLEGE OF ARTS, LANGUAGES & LETTERS
OFFICE OF THE DEAN

STATE OF HAWAI'I
UNIVERSITY OF HAWAI'I
UNIVERSITY OF HAWAI'I AT MĀNOA
OFFICE OF THE PROVOST
COLLEGE OF ARTS, LANGUAGES & LETTERS
DEPARTMENT OF ART & ART HISTORY
Organization Chart
Chart II-C

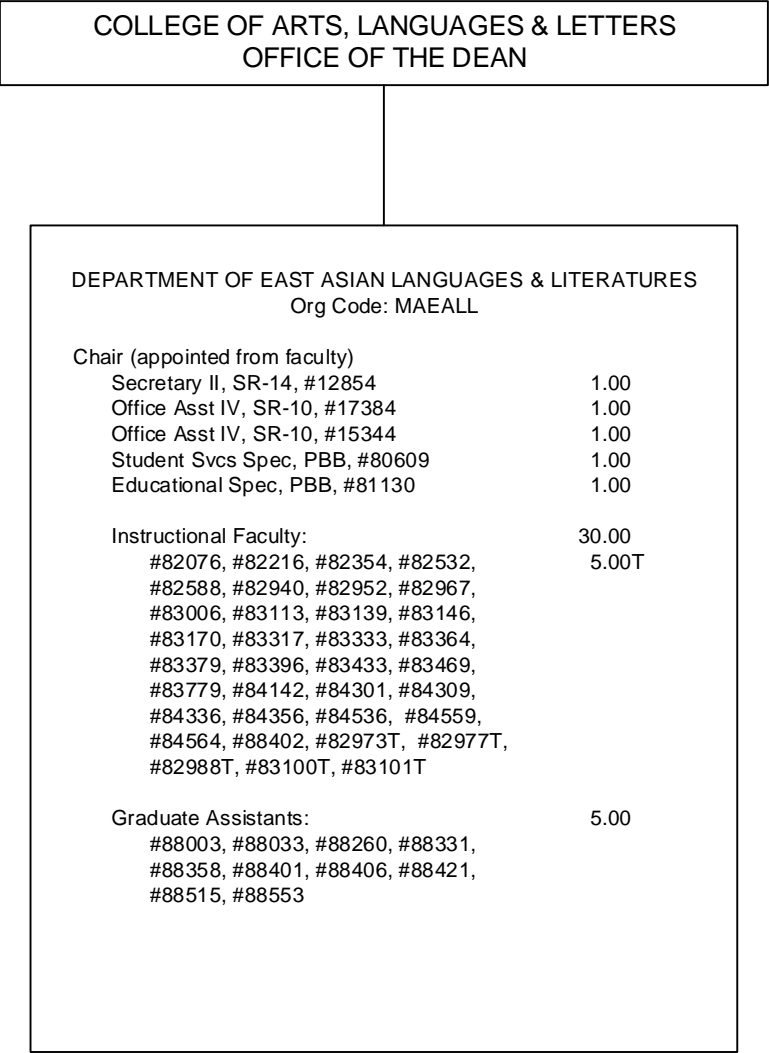
DEPARTMENT OF ART & ART HISTORY		
Org Code: MAARTH		
Chair (appointed from faculty)		
Admin & Fiscal Supp Spec, PBA:	2.00	
#77525, #77920		
Office Asst III, SR-08, #14366	1.00	
Educational Spec, PBB:	4.00	
#80499, #80667, #80726, #81319		
Machinist, PBB, #81041	1.00	
Associate Chair (appointed from faculty)		
Specialist Faculty, #83066		
	1.00	
Instructional Faculty:		18.00
#82067, #82142, #82275, #82445,		
#82501, #82583, #82584, #82886,		
#82995, #83230, #83315, #83323,		
#83588, #83752, #83956, #84050,		
#84232, #84464		
Graduate Assistant:		3.00
#82514, #82601, #88120, #88152,		0.50T
#88242, #88456, #82136T		

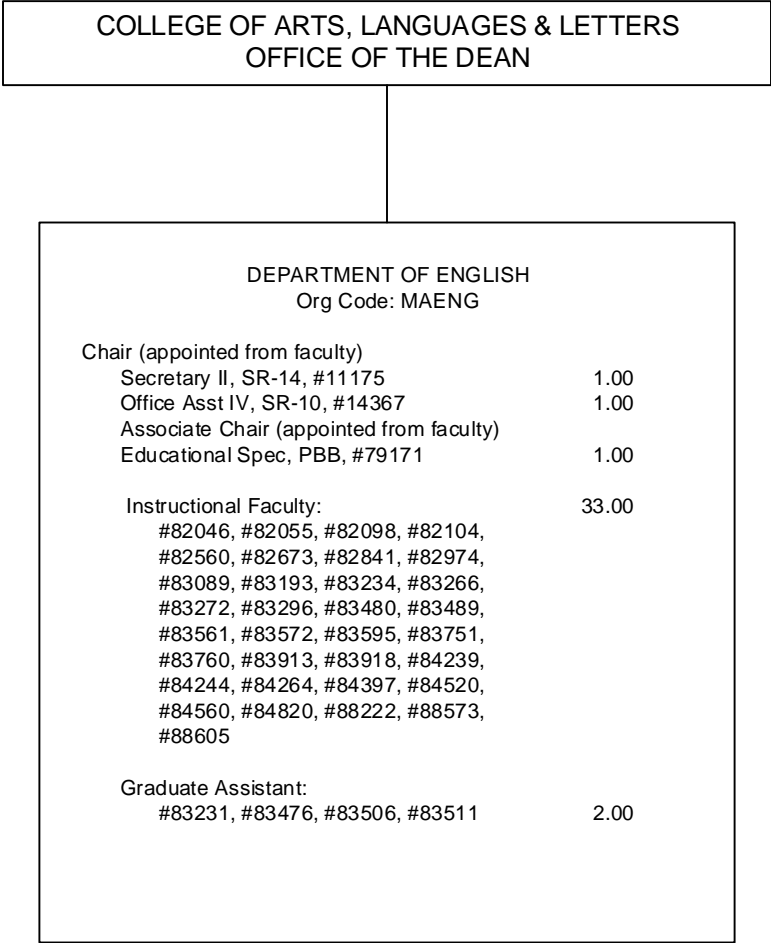


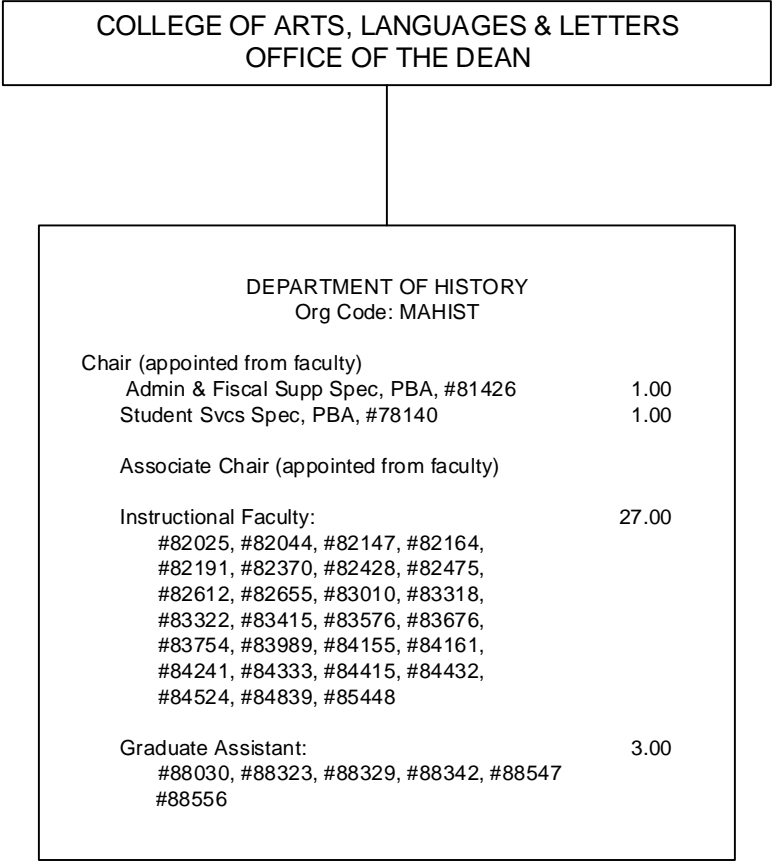
STATE OF HAWAIʻI
UNIVERSITY OF HAWAIʻI
UNIVERSITY OF HAWAIʻI AT MĀNOA
OFFICE OF THE PROVOST
COLLEGE OF ARTS, LANGUAGES & LETTERS
DEPARTMENT OF ASIAN STUDIES
Organization Chart
Chart II-D

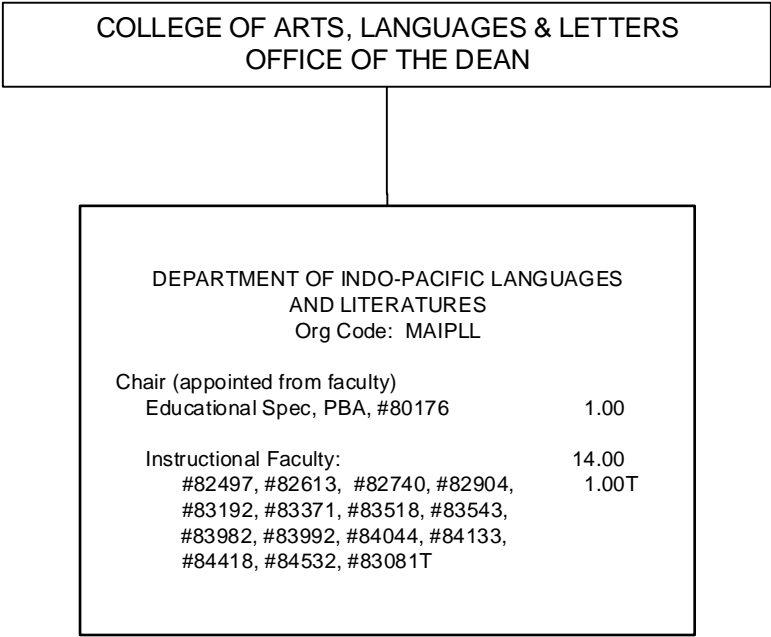


STATE OF HAWAI'I
UNIVERSITY OF HAWAI'I
UNIVERSITY OF HAWAI'I AT MĀNOA
OFFICE OF THE PROVOST
COLLEGE OF ARTS, LANGUAGES & LETTERS
DEPARTMENT OF COMMUNICOLOGY
Organization Chart
Chart II-E





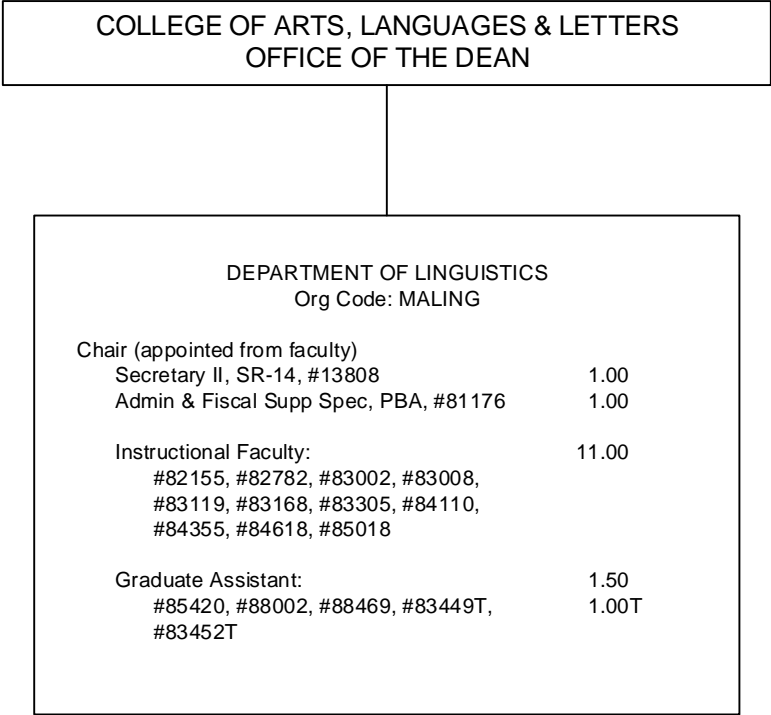




STATE OF HAWAIʻI
UNIVERSITY OF HAWAIʻI
UNIVERSITY OF HAWAIʻI AT MĀNOA
OFFICE OF THE PROVOST
COLLEGE OF ARTS, LANGUAGES & LETTERS
**DEPARTMENT INDO-PACIFIC
LANGUAGES & LITERATURES**
Organization Chart
Chart II-I

COLLEGE OF ARTS, LANGUAGES & LETTERS
OFFICE OF THE DEAN

DEPARTMENT OF LANGUAGES & LITERATURES OF EUROPE & THE AMERICAS Org Code: MALLEA		
Chair (appointed from faculty)		
Secretary II, SR-14, #15346		1.00
Office Asst IV, SR-10, #22367		1.00
Educational Spec, PBB, #81199		1.00
Instructional Faculty:		23.00
#82100, #82101, #82115, #82163, #82270, #82733, #82827, #83043, #83246, #83247, #83253, #83254, #83265, #83427, #83656, #83761, #83975, #84024, #84081, #84101, #84112, #84445, #84682, #83020T, #83029T, #83039T, #83057T, #83102T, #83127T		6.00T
Graduate Assistant:		8.50
#83366, #88006, #88086, #88118, #88122, #88124, #88179, #88209, #88250, #88296, #88343, #88380, #88390, #88395, #88475, #88490, #88502, #83446T		0.50T

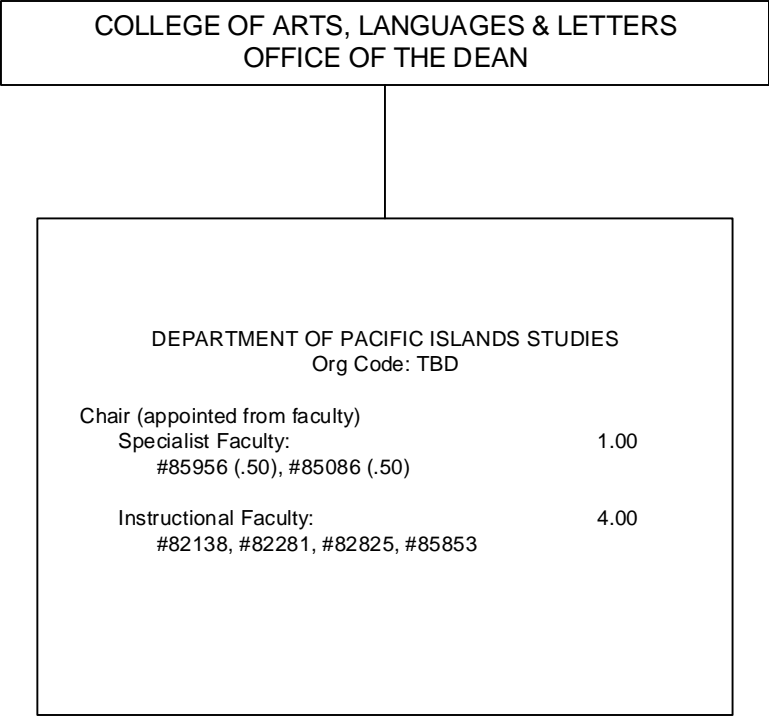


STATE OF HAWAI'I
UNIVERSITY OF HAWAI'I
UNIVERSITY OF HAWAI'I AT MĀNOA
OFFICE OF THE PROVOST
COLLEGE OF ARTS, LANGUAGES & LETTERS
DEPARTMENT OF LINGUISTICS
Organization Chart
Chart II-K

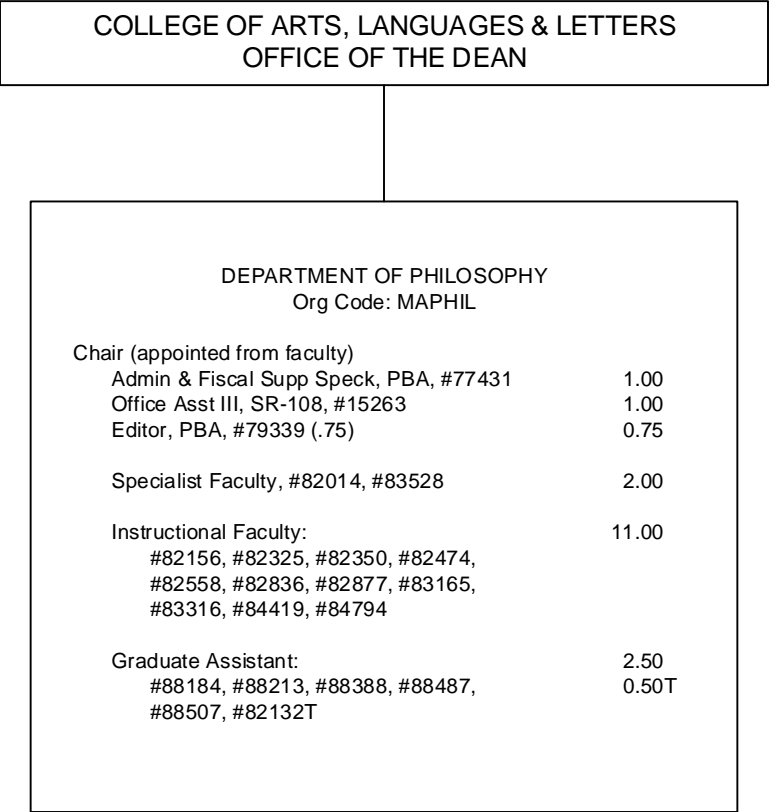
COLLEGE OF ARTS, LANGUAGES & LETTERS
OFFICE OF THE DEAN

STATE OF HAWAIʻI
UNIVERSITY OF HAWAIʻI
UNIVERSITY OF HAWAIʻI AT MĀNOA
OFFICE OF THE PROVOST
COLLEGE OF ARTS, LANGUAGES & LETTERS
DEPARTMENT OF MUSIC
Organization Chart
Chart II-L

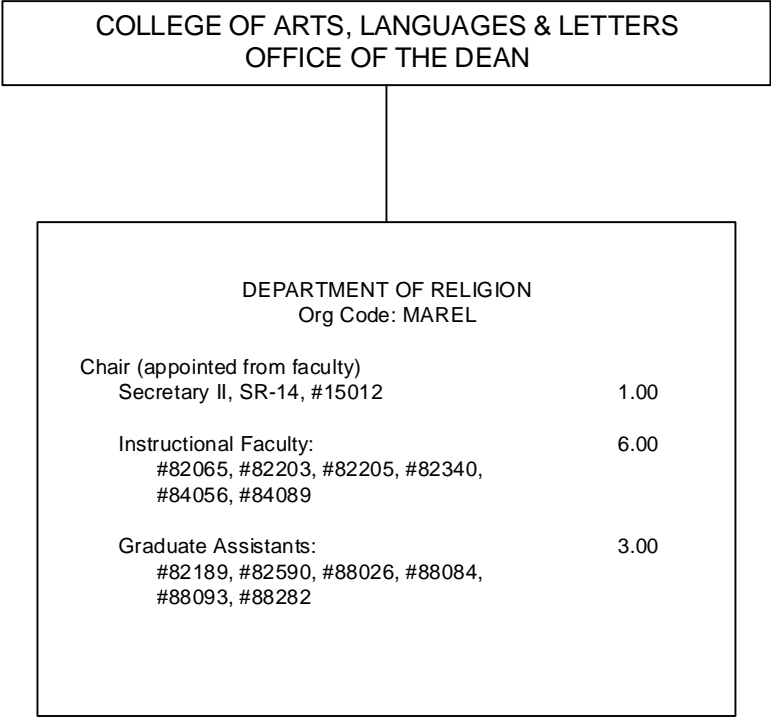
DEPARTMENT OF MUSIC Org Code: MAMUS		
Chair (appointed from faculty)		
Secretary II, SR-14, #11959		1.00
Educational Spec, PBB: #80381, #80866 (.50)		1.50
Admin & Fiscal Supp Spec, PBA, #81033		1.00
Educational Spec, PBA, #81965		1.00
Associate Chair (appointed from faculty)		
Instructional Faculty:		
#82213, #82401, #82438, #82592, #82739, #82752, #82818, #82948, #83048, #83284, #83361, #83454, #83501, #83686, #84061, #84387, #84406, #84442, #84635, #85088		20.00
Graduate Assistant:		
#88019, #88136, #88237, #88265, #88283, #88603		3.00



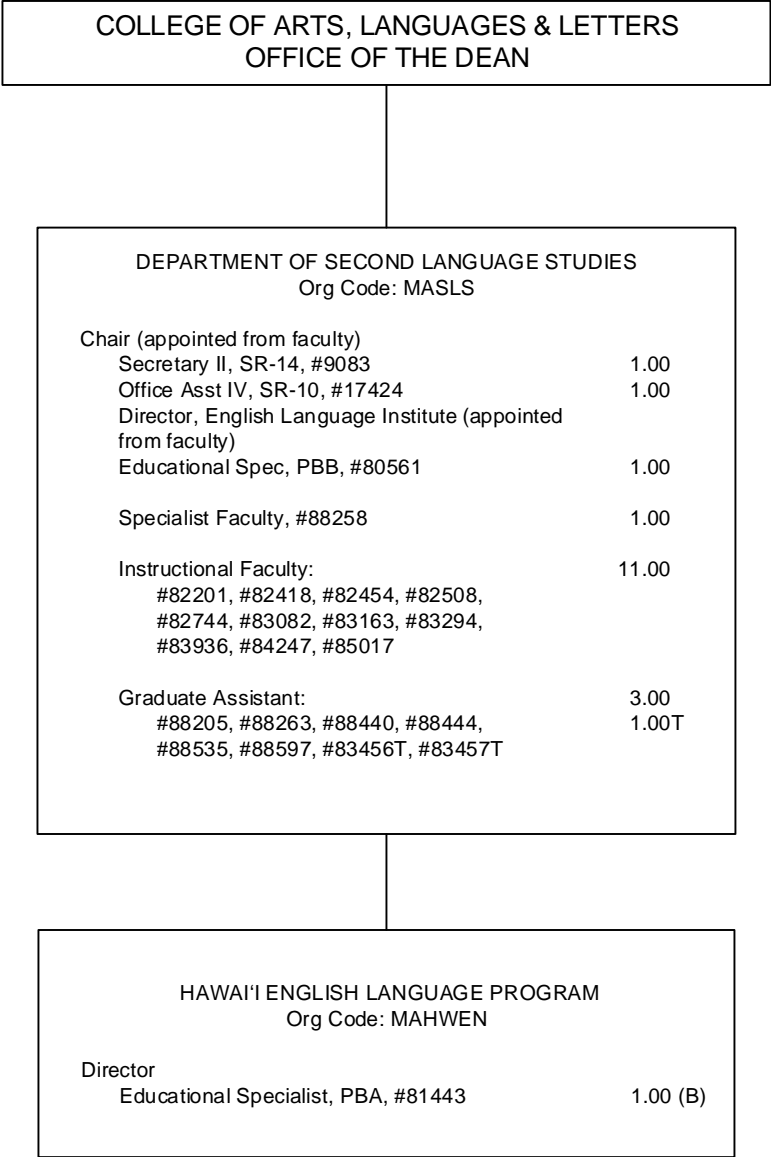
STATE OF HAWAI'I
UNIVERSITY OF HAWAI'I
UNIVERSITY OF HAWAI'I AT MĀNOA
OFFICE OF THE PROVOST
COLLEGE OF ARTS, LANGUAGES & LETTERS
DEPARTMENT OF PACIFIC ISLANDS STUDIES
Organization Chart
Chart II-M



STATE OF HAWAI`I
UNIVERSITY OF HAWAI`I
UNIVERSITY OF HAWAI`I AT MĀNOA
OFFICE OF THE PROVOST
COLLEGE OF ARTS, LANGUAGES & LETTERS
DEPARTMENT OF PHILOSOPHY
Organization Chart
Chart II-N



STATE OF HAWAI'I
UNIVERSITY OF HAWAI'I
UNIVERSITY OF HAWAI'I AT MĀNOA
OFFICE OF THE PROVOST
COLLEGE OF ARTS, LANGUAGES & LETTERS
DEPARTMENT OF RELIGION
Organization Chart
Chart II-O



COLLEGE OF ARTS, LANGUAGES & LETTERS
OFFICE OF THE DEAN

STATE OF HAWAI'I
UNIVERSITY OF HAWAI'I
UNIVERSITY OF HAWAI'I AT MĀNOA
OFFICE OF THE PROVOST
COLLEGE OF ARTS, LANGUAGES & LETTERS
DEPARTMENT OF THEATRE & DANCE
Organization Chart
Chart II-Q

DEPARTMENT OF THEATRE & DANCE Org Code: MATD		
Chair (appointed from faculty)		
Secretary II, SR-14, #13647		1.00
Admin & Fiscal Supp Spec, PBA, #77076		1.00
Theater/Stage Manager, PBB, #80119		1.00
Theater Technician, PBB:		3.00
#78466, #80700, #81269		
Operation Coordinator, PBA, #80994		1.00
Director of Theatre (Associate Chair) (appointed from faculty)		
Director of Dance Program (Associate Chair) (appointed from faculty)		
Instructional Faculty:		17.00
#82110, #82161, #82227, #82234, #82260, #82302, #82640, #83250, #83252, #83337, #83436, #83439, #83591, #84095, #84434, #84574, #84678		
Graduate Assistant:		6.00
#82419, #82549, #82568, #88000, #88051, #88052, #88053, #88127, #88207, #88211, #88246, #88324, #82117T, #82123T		1.00T

