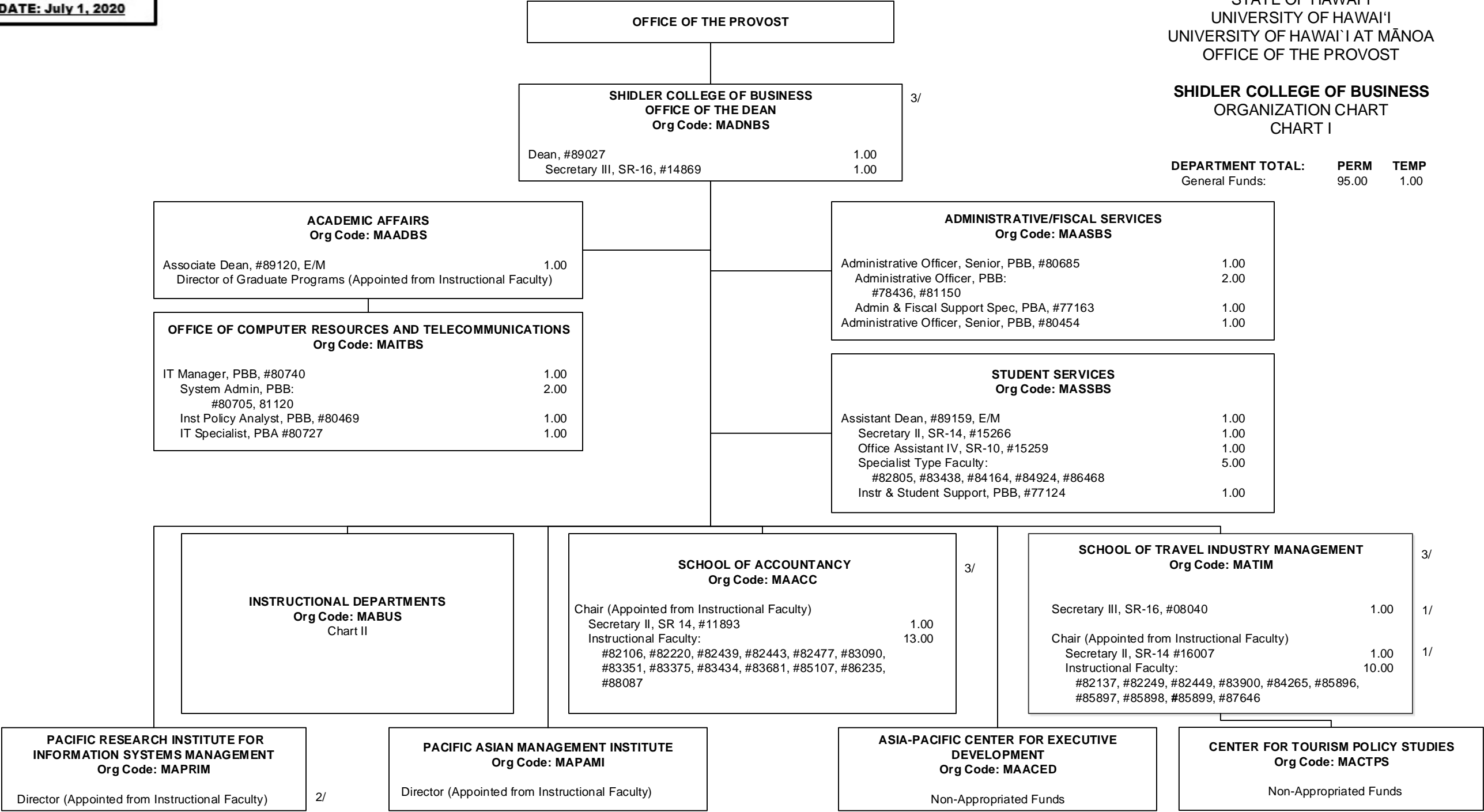


STATE OF HAWAI'I
UNIVERSITY OF HAWAI'I
UNIVERSITY OF HAWAI'I AT MĀNOA
OFFICE OF THE PROVOST

SHIDLER COLLEGE OF BUSINESS
ORGANIZATION CHART
CHART I

DEPARTMENT TOTAL: PERM TEMP
General Funds: 95.00 1.00



1/ Secretary III and Secretary II positions in School of Travel Industry Management to be redescribed, as appropriate
2/ Director in Pacific Research Institution for Information Systems Management pending, to be established
3/ Shidler Advisory Council, SOA Advisory Board and TIM Advisory Board are not included in the Org Chart above

STATE OF HAWAIʻI
UNIVERSITY OF HAWAIʻI
UNIVERSITY OF HAWAIʻI AT MĀNOA
OFFICE OF THE PROVOST
SHIDLER COLLEGE OF BUSINESS
INSTRUCTIONAL DEPARTMENTS
ORGANIZATION CHART
CHART II

