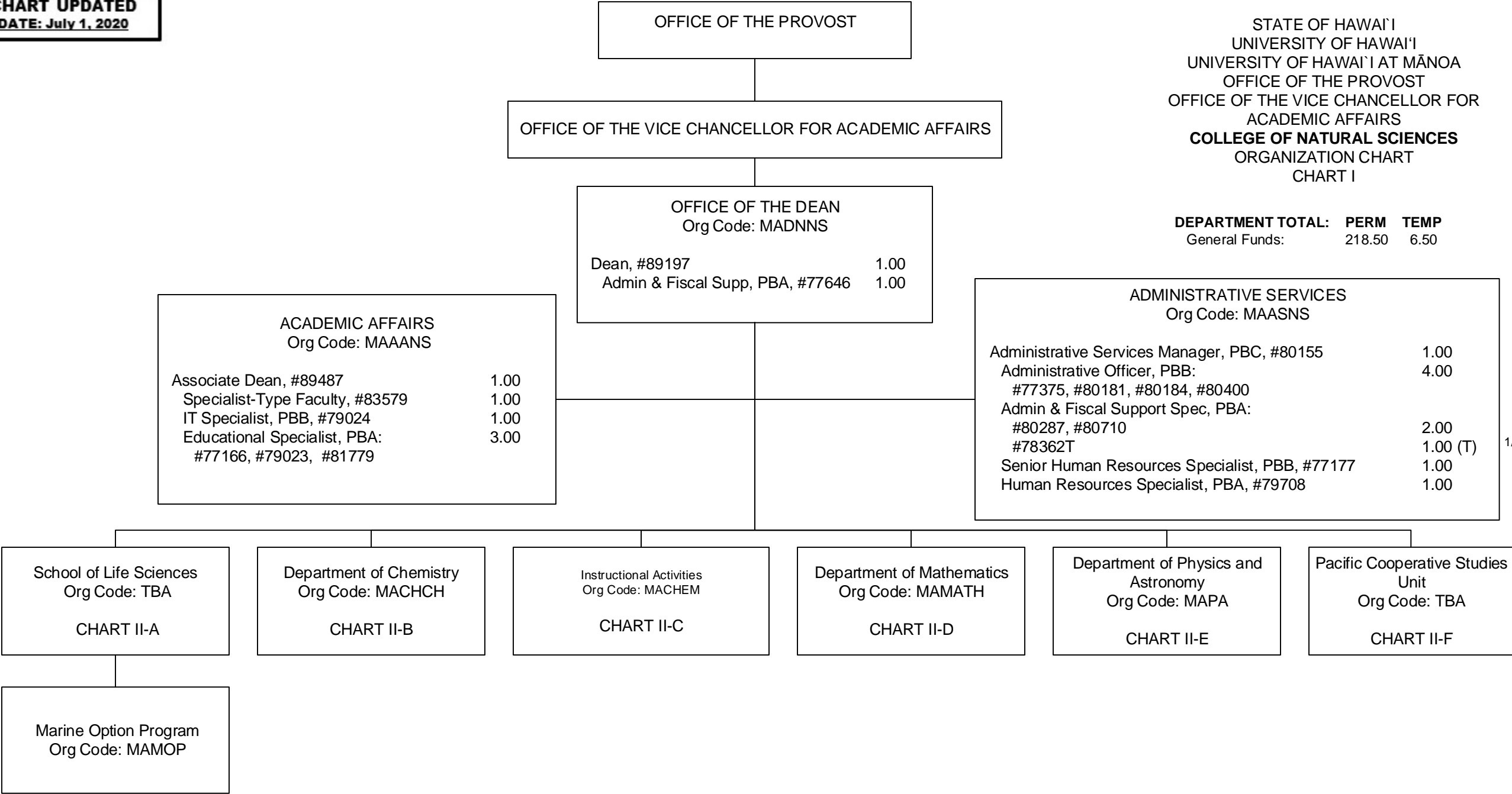


DEPARTMENT TOTAL: PERM TEMP
General Funds: 218.50 6.50



1/ Administrative Officer, #78362T in Administrative Services is an appropriated temporary position

OFFICE OF THE DEAN

STATE OF HAWAI'I
UNIVERSITY OF HAWAI'I
UNIVERSITY OF HAWAI'I AT MĀNOA
OFFICE OF THE PROVOST
OFFICE OF THE VICE CHANCELLOR FOR
ACADEMIC AFFAIRS
COLLEGE OF NATURAL SCIENCES

SCHOOL OF LIFE SCIENCES
POSITION ORGANIZATION CHART

CHART II-A

School of Life Sciences Org Code: MALFSC	
Director of the School of Life Sciences (Appointed from Faculty Positions)	
Associate Director for Curriculum (Appointed from Faculty Positions)	
Associate Director for Instruction (Appointed from Faculty Positions)	
Associate Director for Research (Appointed from Faculty Positions)	
Chair for Undergraduate Education (Appointed from Faculty Positions)	
Chair for Undergraduate Education (Appointed from Faculty Positions)	
Secretary II, SR-14, #13979, #17564	2.00
Administrative Officer, PBA, #81425	1.00
Admin & Fiscal Support Spec, PBA, #80681	1.00
Program Manager, PBB, #77266	1.00
Educational Specialist, PBB, #77383, #78993, #80296, #80521, #80637, #81177	6.00
Educational Specialist, PBA, #78359	1.00
Instructional Faculty:	37.00
#82007, #82015, #82208, #82243, #82269, #82301, #82411, #82424, #82434, #82552, #82674, #82921, #83079, #83232, #83297, #83344, #83598, #83691, #83709, #83755, #83813, #83857, #83910, #83963, #84037, #84144, #84162, #84189, #84248, #84282, #84472, #85019, #85414, #85790, #85803, #88135, #88993	
Specialist-Type Faculty:	1.00
#70244	
Graduate Assistants:	16.50
#85040, #88021, #88034, #88063, #88068, #88070, #88081, #88097, #88105, #88114, #88150, #88153, #88157, #88159, #88173, #88177, #88226, #88256, #88271, #88273, #88278, #88311, #88351, #88447, #88461, #88472, #88479, #88480, #88516, #88523, #88530, #88599, #88628	
#83828T	0.50 (T)

1/

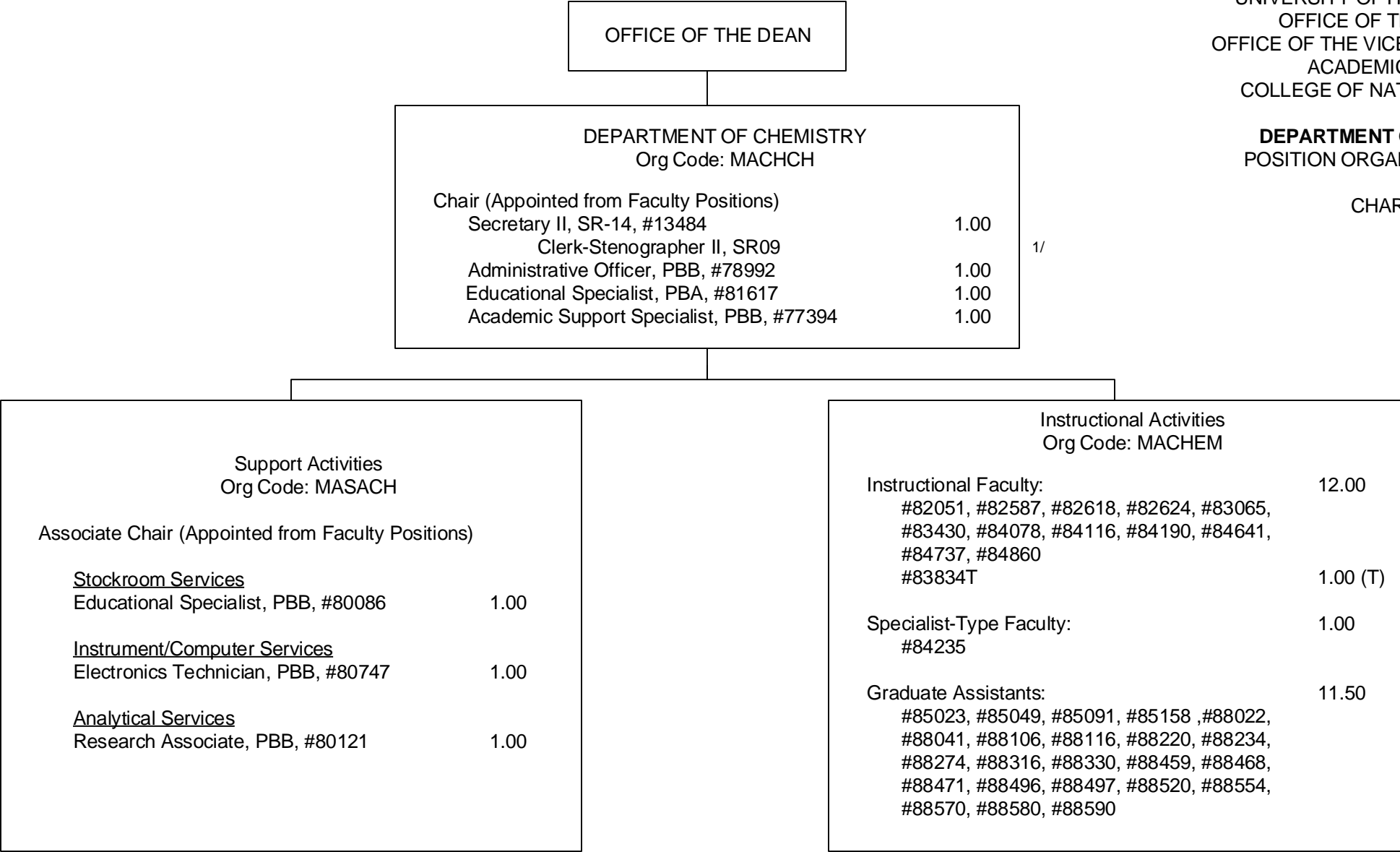
Marine Option Program
Org Code: MAMOP

CHART TOTAL:	PERM	TEMP
General Funds:	66.50	0.50

1/ Graduate Asst, #83828T are appropriated temporary positions.

DEPARTMENT OF CHEMISTRY
POSITION ORGANIZATION CHART

CHART II-B



1/ Clerk Steno II in Department of Chemistry abolished, pending re-establishment.

2/ Instructional Faculty #83834T in Instructional Activities is an appropriated temporary position

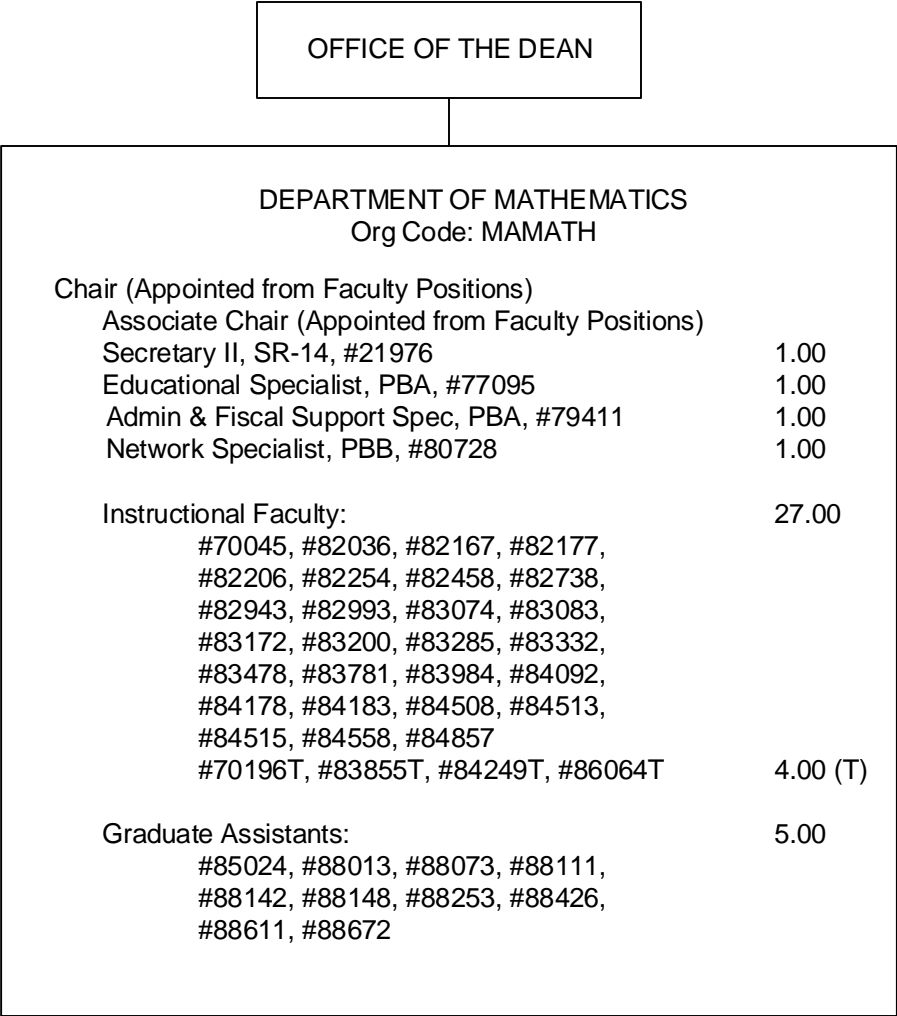
OFFICE OF THE DEAN

DEPARTMENT OF INFORMATION AND COMPUTER SCIENCES Org Code: MAICS	
Chair (Appointed from Faculty Positions)	
Associate Chair for Computer Science (Appointed from Faculty Positions)	
Associate Chair for Library and Information Science (Appointed from Faculty Positions)	
Secretary II, SR-14, #18055	1.00
System Administrator, PBB, #81447	1.00
Admin & Fiscal Support Specialist, PBA, #81985	1.00
Operations Coordinator, PBA, #79298	1.00
Information Technology Specialist, PBA, #77155	1.00
Instructional Faculty:	24.50
#70284, #82070, #82287, #82468, #82735, #82787, #82794, #82835, #83203, #83381, #83393, #83408, #83426, #83443, #83602, #83889, #83999, #84029, #84270, #84427, #86062, #87503, #87504, #88680, #88715 (0.50)	
Specialist-Type Faculty:	2.00
#82649, #83916	
Graduate Assistants:	4.00
#85650, #86422, #86464, #86465, #86466, #86467, #87556, #87557	

STATE OF HAWAIʻI
UNIVERSITY OF HAWAIʻI
UNIVERSITY OF HAWAIʻI AT MĀNOA
OFFICE OF THE PROVOST
OFFICE OF THE VICE CHANCELLOR FOR
ACADEMIC AFFAIRS
COLLEGE OF NATURAL SCIENCES

DEPARTMENT OF INFORMATION
AND COMPUTER SCIENCES
POSITION ORGANIZATION CHART

CHART II-C



STATE OF HAWAI'I
UNIVERSITY OF HAWAI'I
UNIVERSITY OF HAWAI'I AT MĀNOA
OFFICE OF THE PROVOST
OFFICE OF THE VICE CHANCELLOR FOR
ACADEMIC AFFAIRS
COLLEGE OF NATURAL SCIENCES

DEPARTMENT OF MATHEMATICS
POSITION ORGANIZATION CHART

CHART II-D

1/ Instructional Faculty, #70196T, #83855T, #84249T and #86064T are appropriated temporary positions.

OFFICE OF THE DEAN

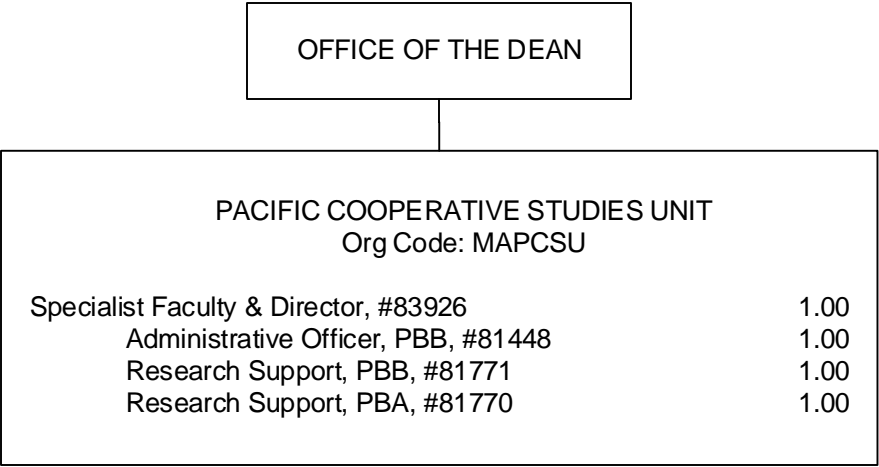
STATE OF HAWAI'I
UNIVERSITY OF HAWAI'I
UNIVERSITY OF HAWAI'I AT MĀNOA
OFFICE OF THE PROVOST
OFFICE OF THE VICE CHANCELLOR FOR
ACADEMIC AFFAIRS
COLLEGE OF NATURAL SCIENCES

DEPARTMENT OF PHYSICS AND ASTRONOMY
POSITION ORGANIZATION CHART

CHART II-E

DEPARTMENT OF PHYSICS AND ASTRONOMY
Org Code: MAPA

Chair (Appointed from Faculty Positions)		
Associate Chair (Appointed from Faculty Position)		
Office Assistant III,SR-08, #14355	1.00	
Admin & Fiscal Support Specialist, PBA, #77577	1.00	
Scientific Instrument Technician, PBB, #80706	1.00	
Scientific Instrument Technician, PBB, #80703	1.00	
Instructional Faculty:		
#82217, #82314, #82473, #82633, #82770,	18.00	
#82875, #83534, #83547, #83790, #83861,		
#83915, #84240, #84398, #84494, #84587,		
#84852, #84876, #88615		
Assistant Specialist-Type Faculty: #70061		
	1.00	
Graduate Assistants:		
#88176, #88198, #88270, #88309,	5.00	
#88385, #88389, #88478, #88524,		
#88593, #88650		



STATE OF HAWAI'I
UNIVERSITY OF HAWAI'I
UNIVERSITY OF HAWAI'I AT MĀNOA
OFFICE OF THE PROVOST
OFFICE OF THE VICE CHANCELLOR FOR
ACADEMIC AFFAIRS
COLLEGE OF NATURAL SCIENCES

PACIFIC COOPERATIVE STUDIES UNIT
POSITION ORGANIZATION CHART

CHART II-F