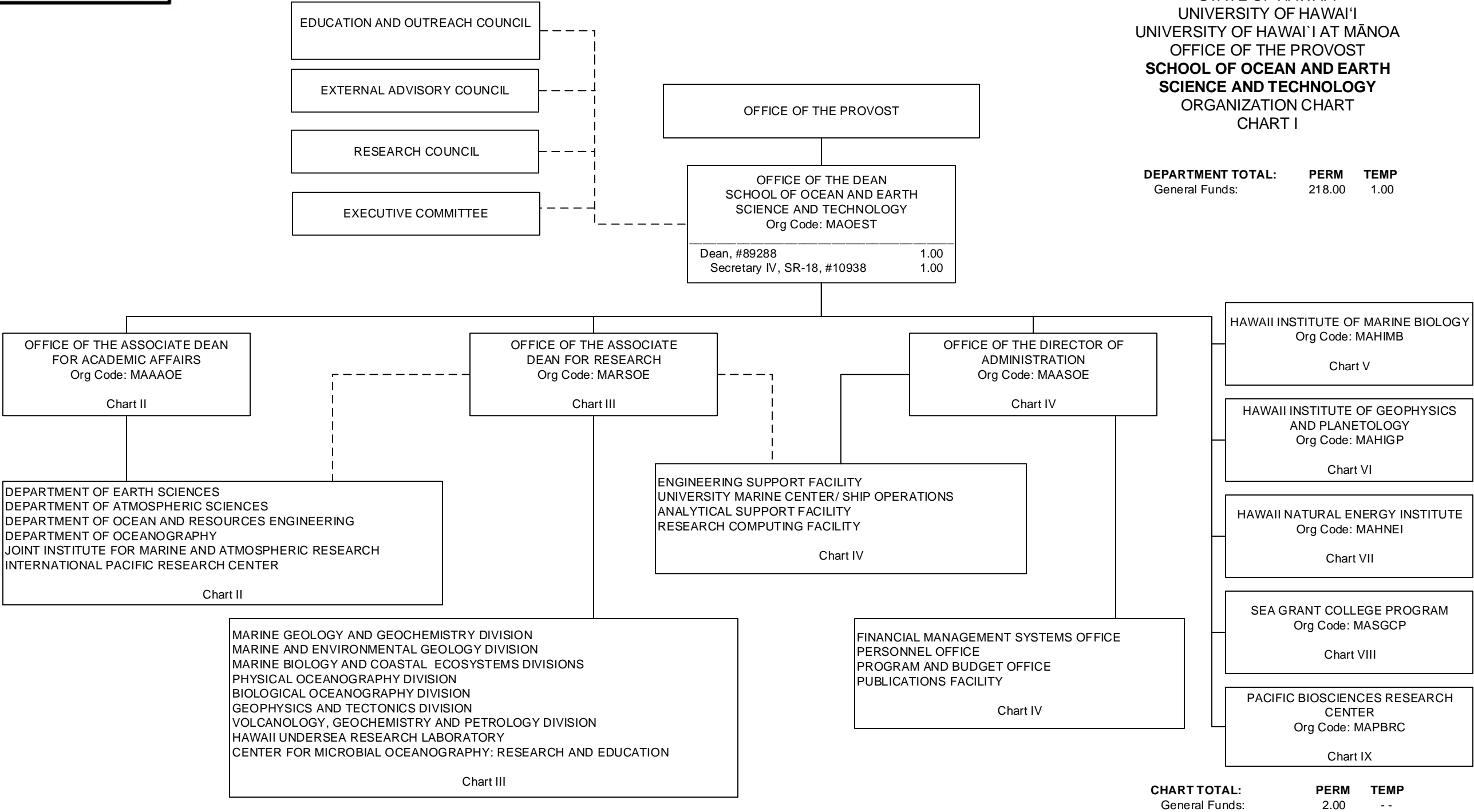


STATE OF HAWAI'I
UNIVERSITY OF HAWAI'I
UNIVERSITY OF HAWAI'I AT MĀNOA
OFFICE OF THE PROVOST
SCHOOL OF OCEAN AND EARTH
SCIENCE AND TECHNOLOGY
ORGANIZATION CHART
CHART I

DEPARTMENT TOTAL:	PERM	TEMP
General Funds:	218.00	1.00



OFFICE OF THE DEAN
SCHOOL OF OCEAN AND EARTH
SCIENCE AND TECHNOLOGY

OFFICE OF THE ASSOCIATE DEAN FOR ACADEMIC
AFFAIRS

Org Code: MAAAOE

Assoc. Dean, #89267	1.00
Admin & Fiscal Supp. Spec., PBA, #77722	1.00
Student Svcs Spec., PBB, #78897	1.00
Student Svcs Spec., PBA, #77286	1.00

STATE OF HAWAI'I
UNIVERSITY OF HAWAI'I
UNIVERSITY OF HAWAI'I AT MĀNOA
OFFICE OF THE PROVOST
SCHOOL OF OCEAN AND EARTH
SCIENCE AND TECHNOLOGY

OFFICE OF THE ASSOCIATE DEAN FOR
ACADEMIC AFFAIRS
ORGANIZATION CHART
CHART II

DEPARTMENT OF
EARTH SCIENCES
Org Code: MAGG

Chair	1/	
Instructional Faculty (Joint Appt.):	10.75	
#82011 (0.50), #84222 (0.25), #83213 (0.50), #86039 (0.50), #84009 (0.50), #85153 (0.50), #82622 (0.50), #85535 (0.50), #85865 (0.50), #85978 (0.50), #85997 (0.50), #86012 (0.50), #87437 (0.50), #86497 (0.50), #86576 (0.50), #86609 (0.50), #88168 (0.50), #88172 (0.50), #88174 (0.50), #85598 (0.50), #82130 (0.50), #88192 (0.50)		
Graduate Assistants:	0.50	
#88443, #88400T	(T) 0.50	

DEPARTMENT OF
OCEANOGRAPHY
Org Code: MAOCN

Chair	1/	
Admin & Fiscal Supp. Specialist, #80896	1.00	
Admin & Fiscal Supp. Specialist, PBA, #77205	1.00	
Student Services Specialist, PBB, #79774	1.00	
Instructional Faculty (Joint Appt.)	17.30	
#82059 (0.50), #86351 (0.50), #82291 (0.50), #87139 (0.50), #82726 (0.50), #84601 (0.50), #82961 (0.50), #85339 (0.50), #83355 (0.50), #84673 (0.50), #70038 (0.50), #85314 (0.55), #84826 (0.50), #85992 (0.50), #85920 (0.50), #86498 (0.50), #86000 (0.50), #88163 (0.50), #88156 (0.50), #88393, #88386, #82259 (0.50), #83921, #85369 (0.50), #84287, #84052, #84222 (0.25), #84890, #70032 (0.50),		
Graduate Assistants:	0.50	
#87111, #88396T	(T) 0.50	

JOINT INSTITUTE FOR MARINE
AND ATMOSPHERIC RESEARCH
Org Code: MAJIMA

Non-Appropriated Funds

INTERNATIONAL PACIFIC
RESEARCH CENTER
Org Code: MAIPRC

Non-Appropriated Funds

DEPARTMENT OF
ATMOSPHERIC SCIENCES
Org Code: MAMET

Chair	
Admin & Fiscal Supp., PBA, #79761	1.00
IT Specialist, PBB, #80402	1.00
Instructional Faculty:	11.50
#82008, #82077, #82368, #82491, #82709, #82712, #83700, #84107, #84300, #83721, #84451, #86060 (0.50)	

DEPARTMENT OF OCEAN AND
RESOURCES ENGINEERING
Org Code: MAORE

Chair	1/	
Admin & Fiscal Supp., PBA, #78804	1.00	
Elec Eng., PBB, #80172	0.50	
Instructional Faculty:	8.00	
#83802, #83376, #84118, #88466, #84447, #85983, #85926, #88488		
Graduate Assistant: #88382	0.50	

CHART TOTAL: PERM TEMP
General Funds: 59.55 1.00

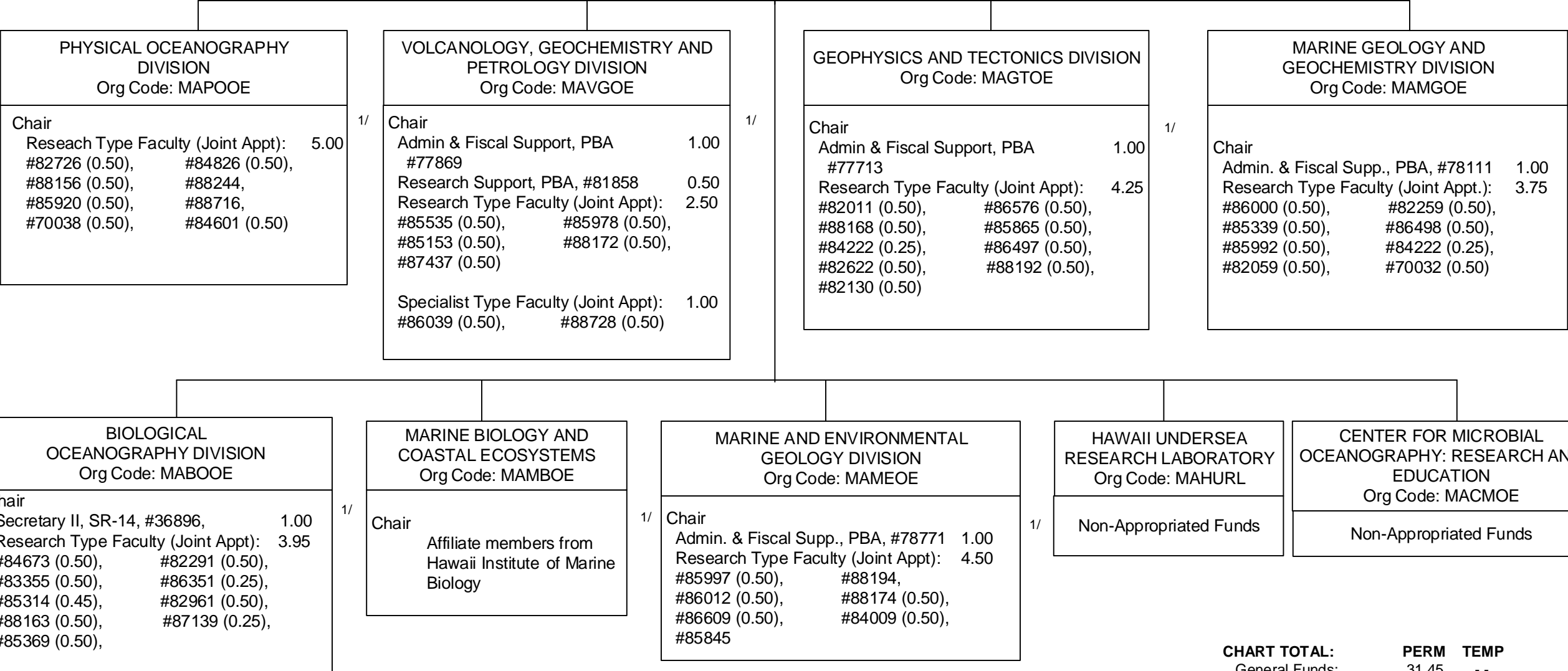
1/ All department Chair positions appointed from faculty positions

OFFICE OF THE ASSOCIATE DEAN FOR RESEARCH
ORGANIZATION CHART
CHART III

OFFICE OF THE DEAN
SCHOOL OF OCEAN AND EARTH SCIENCE
AND TECHNOLOGY

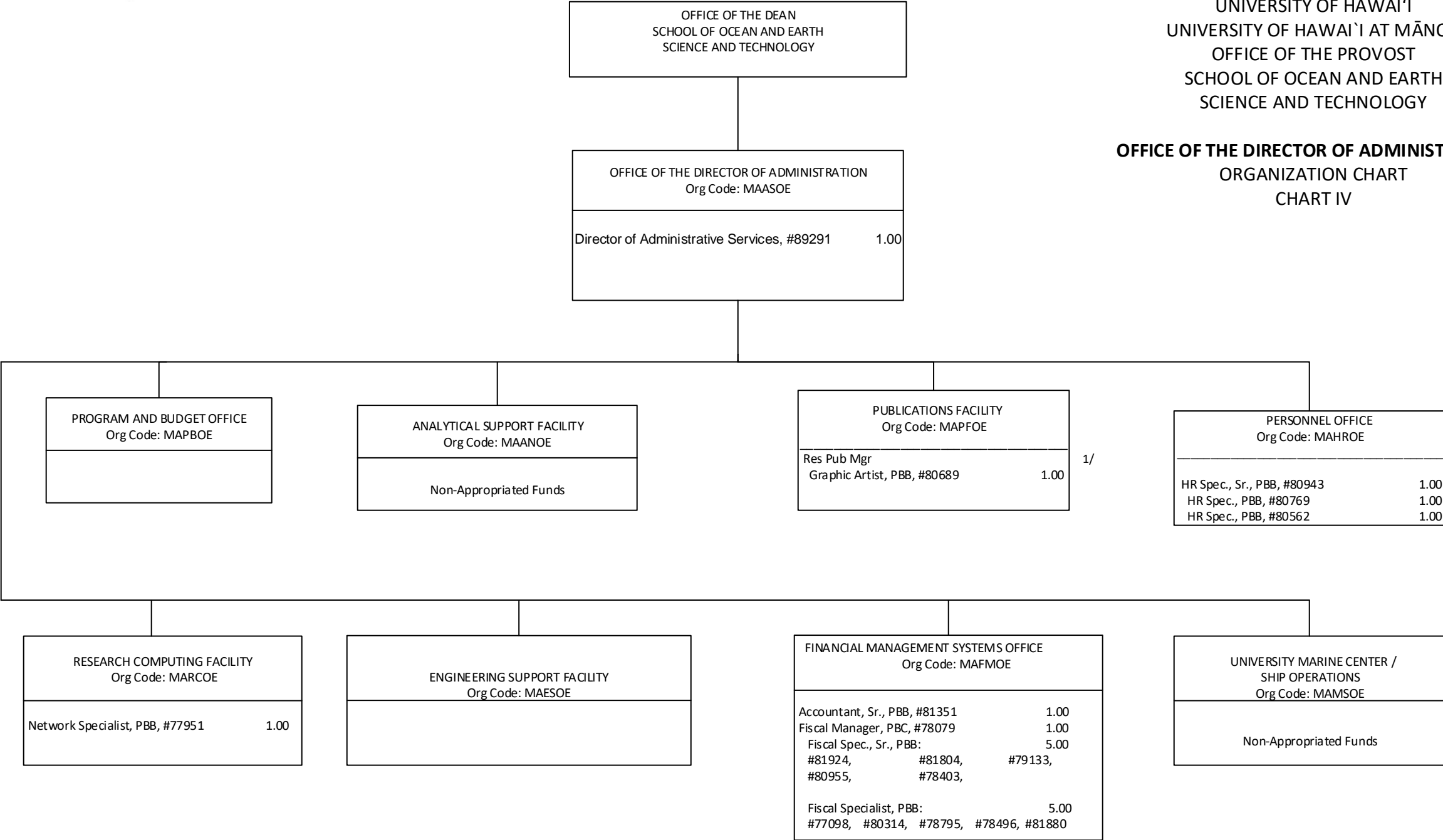
OFFICE OF THE
ASSOCIATE DEAN FOR RESEARCH
Org Code: MARSOE

Assoc. Dean, #890531.00



1/ All department Chair positions appointed from faculty positions

OFFICE OF THE DIRECTOR OF ADMINISTRATION
ORGANIZATION CHART
CHART IV



1/ Pending establishment of Res Pub Mgr in Publications Facility

OFFICE OF THE DIRECTOR
HAWAII INSTITUTE OF MARINE BIOLOGY
Org Code: MAHIMB

Director, #89005

1.00

Admin Officer, PBB, #78439

1.00

Admin & Fisc. Supp. Sp., PBA, #78493

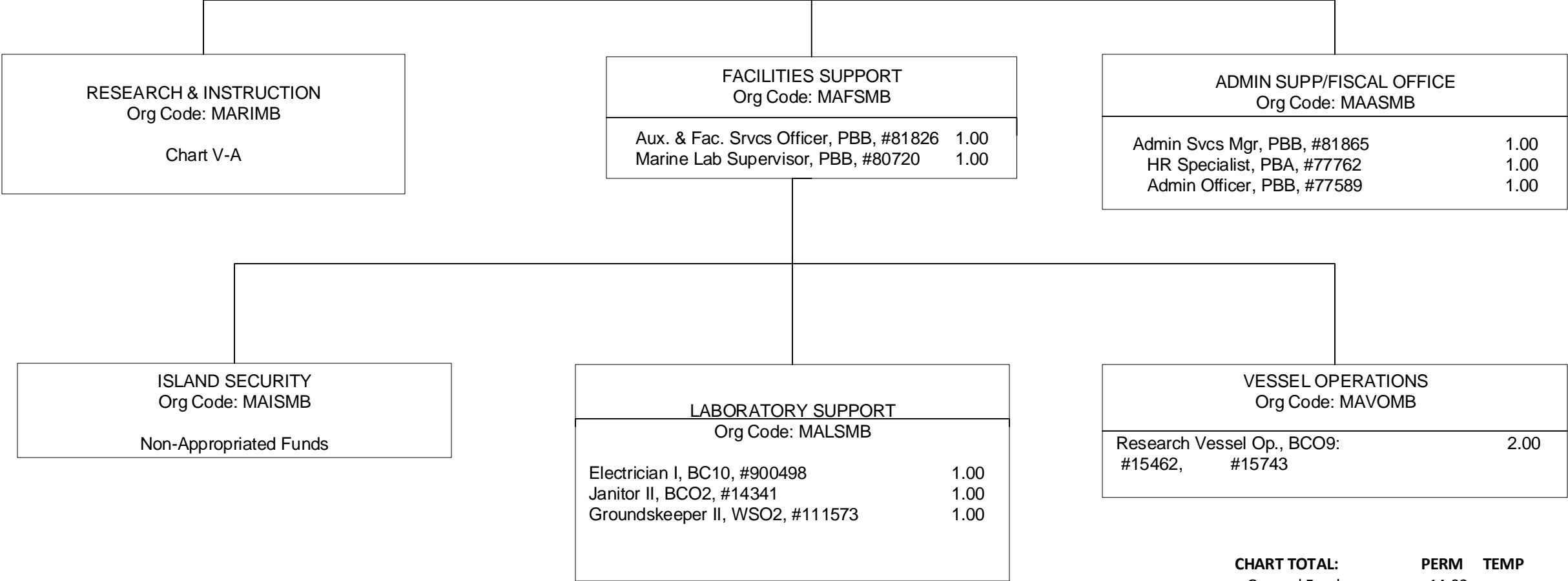
1.00

Research Associate, PBB, #78278

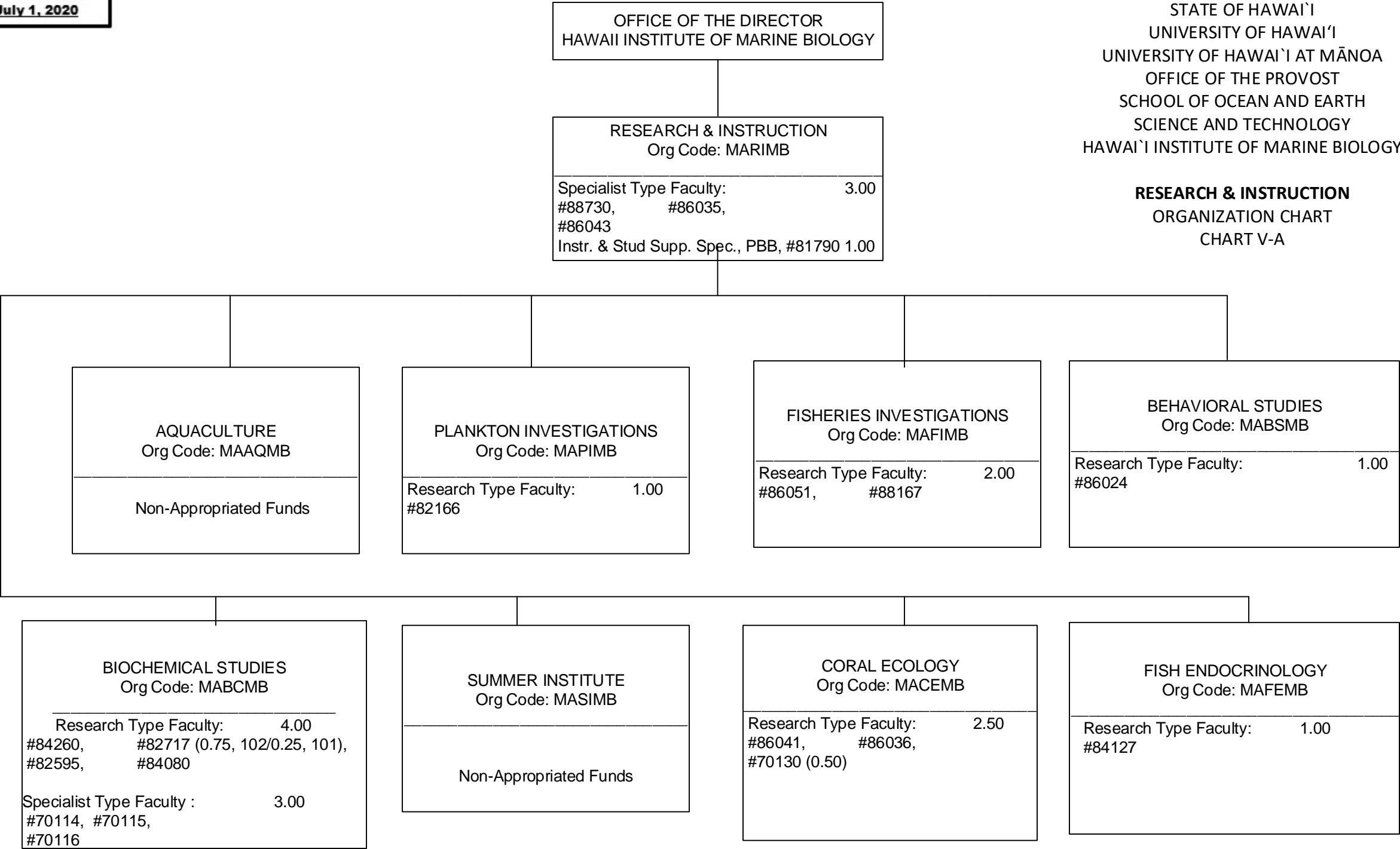
1.00

STATE OF HAWAIʻI
UNIVERSITY OF HAWAIʻI
UNIVERSITY OF HAWAIʻI AT MĀNOA
OFFICE OF THE PROVOST
SCHOOL OF OCEAN AND EARTH
SCIENCE AND TECHNOLOGY

HAWAIʻI INSTITUTE OF MARINE BIOLOGY
ORGANIZATION CHART
CHART V



RESEARCH & INSTRUCTION
ORGANIZATION CHART
CHART V-A



OFFICE OF THE DEAN
SCHOOL OF OCEAN AND EARTH
SCIENCE AND TECHNOLOGY

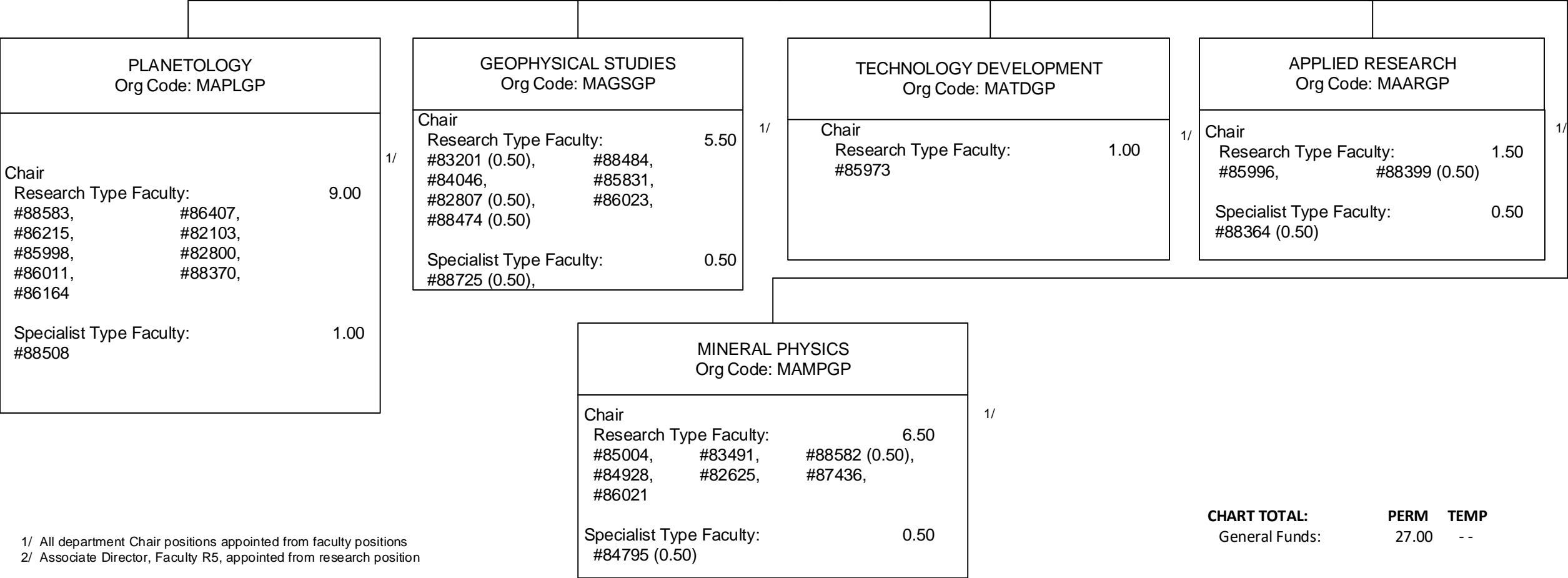
OFFICE OF THE DIRECTOR
HAWAII INSTITUTE OF GEOPHYSICS
AND PLANETOLOGY
Org Code: MAHIGP

Director, #891231.00
Assoc. Director

2/

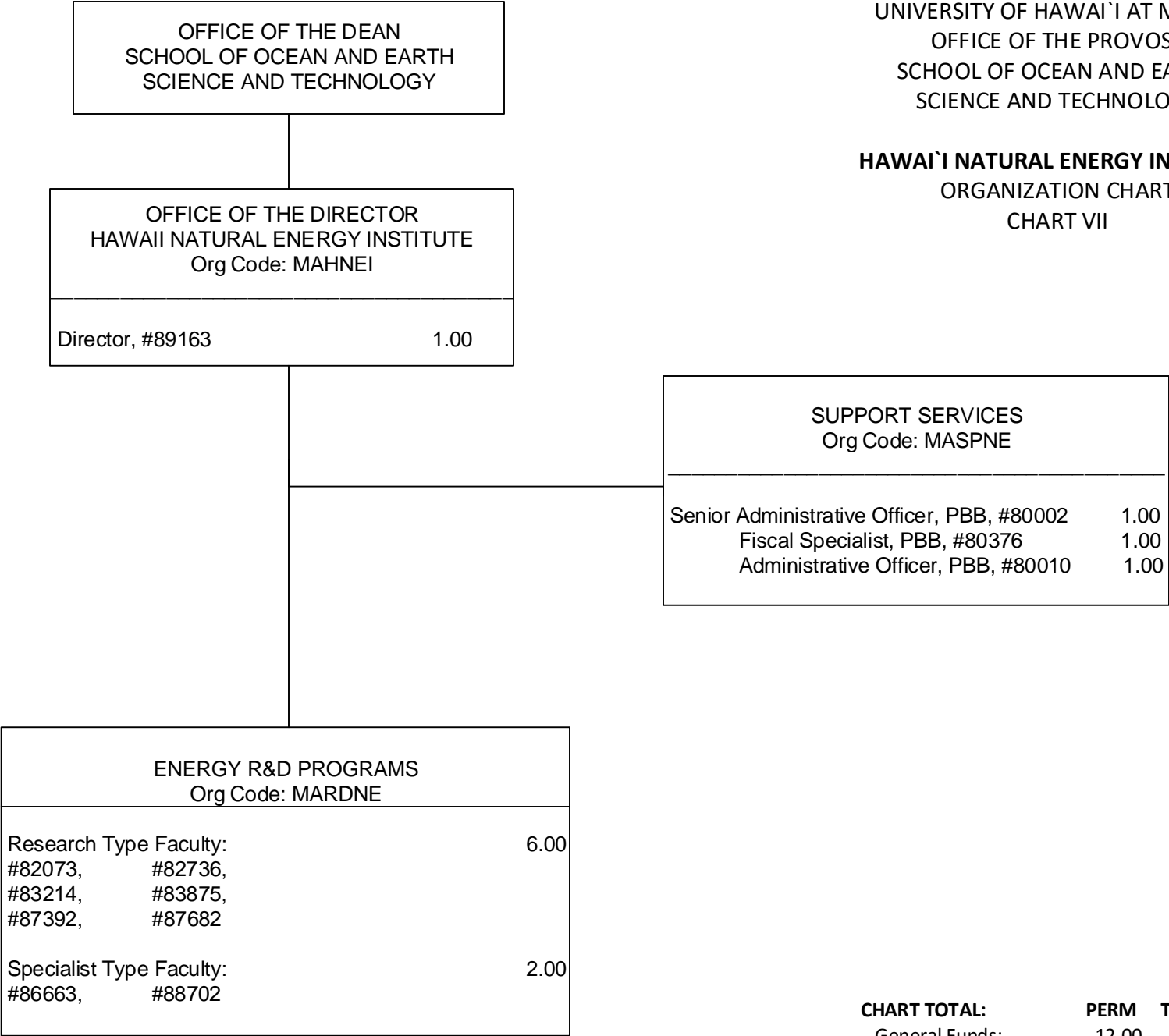
STATE OF HAWAIʻI
UNIVERSITY OF HAWAIʻI
UNIVERSITY OF HAWAIʻI AT MĀNOA
OFFICE OF THE PROVOST
SCHOOL OF OCEAN AND EARTH
SCIENCE AND TECHNOLOGY

HAWAIʻI INSTITUTE OF GEOPHYSICS AND
PLANETOLOGY
ORGANIZATION CHART
CHART VI

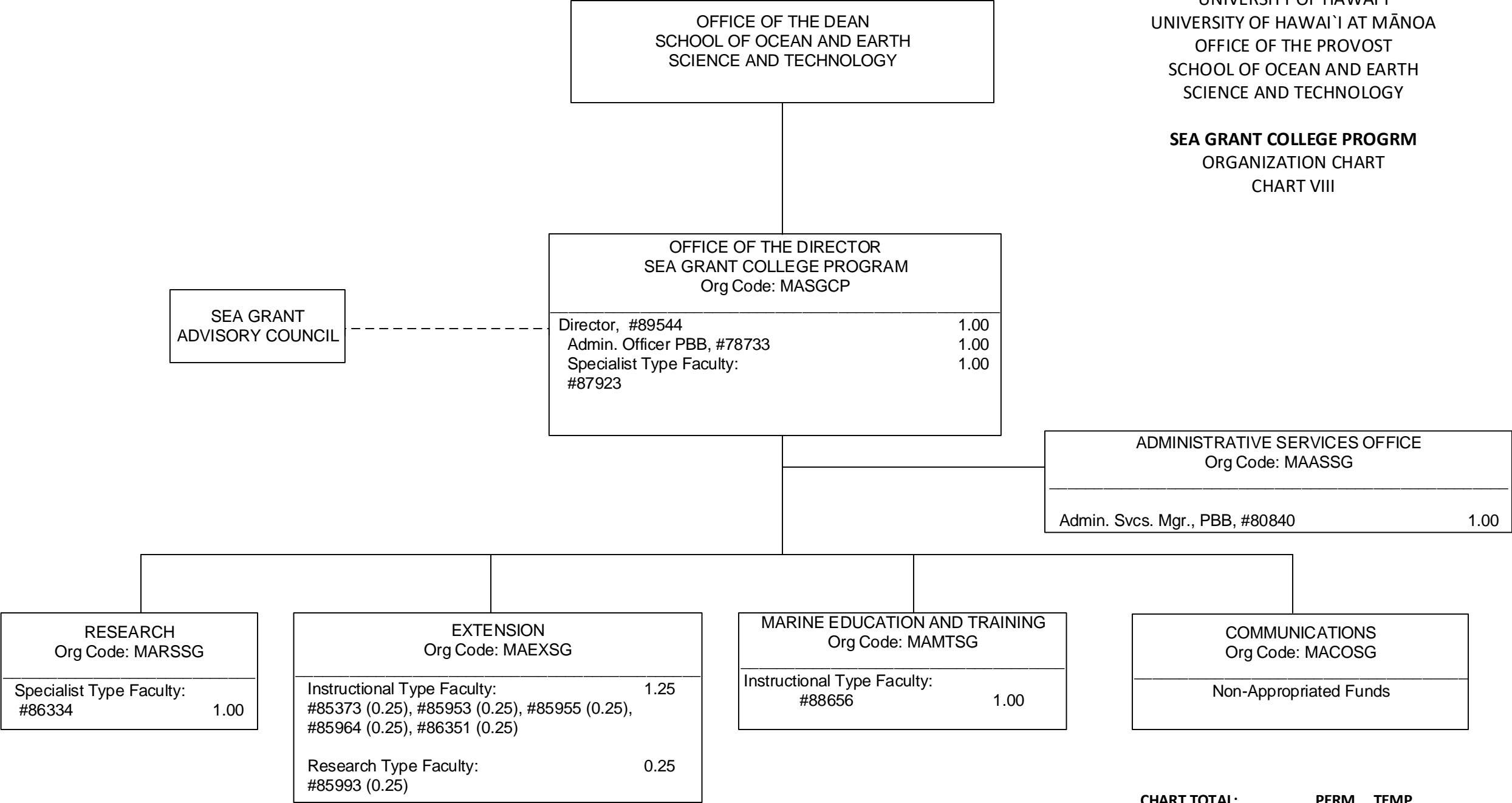


STATE OF HAWAIʻI
UNIVERSITY OF HAWAIʻI
UNIVERSITY OF HAWAIʻI AT MĀNOA
OFFICE OF THE PROVOST
SCHOOL OF OCEAN AND EARTH
SCIENCE AND TECHNOLOGY

HAWAIʻI NATURAL ENERGY INSTITUTE
ORGANIZATION CHART
CHART VII



SEA GRANT COLLEGE PROGRAM
ORGANIZATION CHART
CHART VIII



OFFICE OF THE DEAN
SCHOOL OF OCEAN AND EARTH SCIENCE AND TECHNOLOGY

STATE OF HAWAIʻI
UNIVERSITY OF HAWAIʻI
UNIVERSITY OF HAWAIʻI AT MĀNOA
OFFICE OF THE PROVOST
SCHOOL OF OCEAN AND EARTH
SCIENCE AND TECHNOLOGY

PACIFIC BIOSCIENCES RESEARCH CENTER
ORGANIZATION CHART
CHART IX

OFFICE OF THE DIRECTOR PACIFIC BIOSCIENCES RESEARCH CENTER Org Code: MAPBRC	
Director, #89024	1.00
Operations Coordinator, PBB, #81906	1.00

ADMINISTRATIVE & SUPPORT SERVICES Org Code: MAASPB	
Admin Svcs Mgr, PBB, #80198	1.00
Admin & Fiscal Support Sp, PBA, #81853	1.00
Human Resources Sp, PBB, #81957	1.00
Fiscal Specialist, PBB, #77462	1.00
Fiscal Specialist, PBB, #80718	1.00

RESEARCH DIVISION Org Code: MARSPB	
Instructional Faculty:	3.25
#82826, #86178(0.50), #86180(0.50), #83295 #83499 (0.25)	
Research Type Faculty:	8.75
#82743, #83789, #83868, #86178 (0.50), #86170, #86197, #86201, #70132 (0.50), #87490, #83499 (0.75)	
Specialist Type Faculty:	2.00
#86185, #86186	
IT Specialist, PBB, #80742	1.00
Marine Laboratory Supervisor, PBB, #80753	1.00
Research Associate, PBA #80956, #81766	2.00
Administrative Officer, PBB, #78497	1.00
Secretary II, SR-14, #15262, #15464	2.00