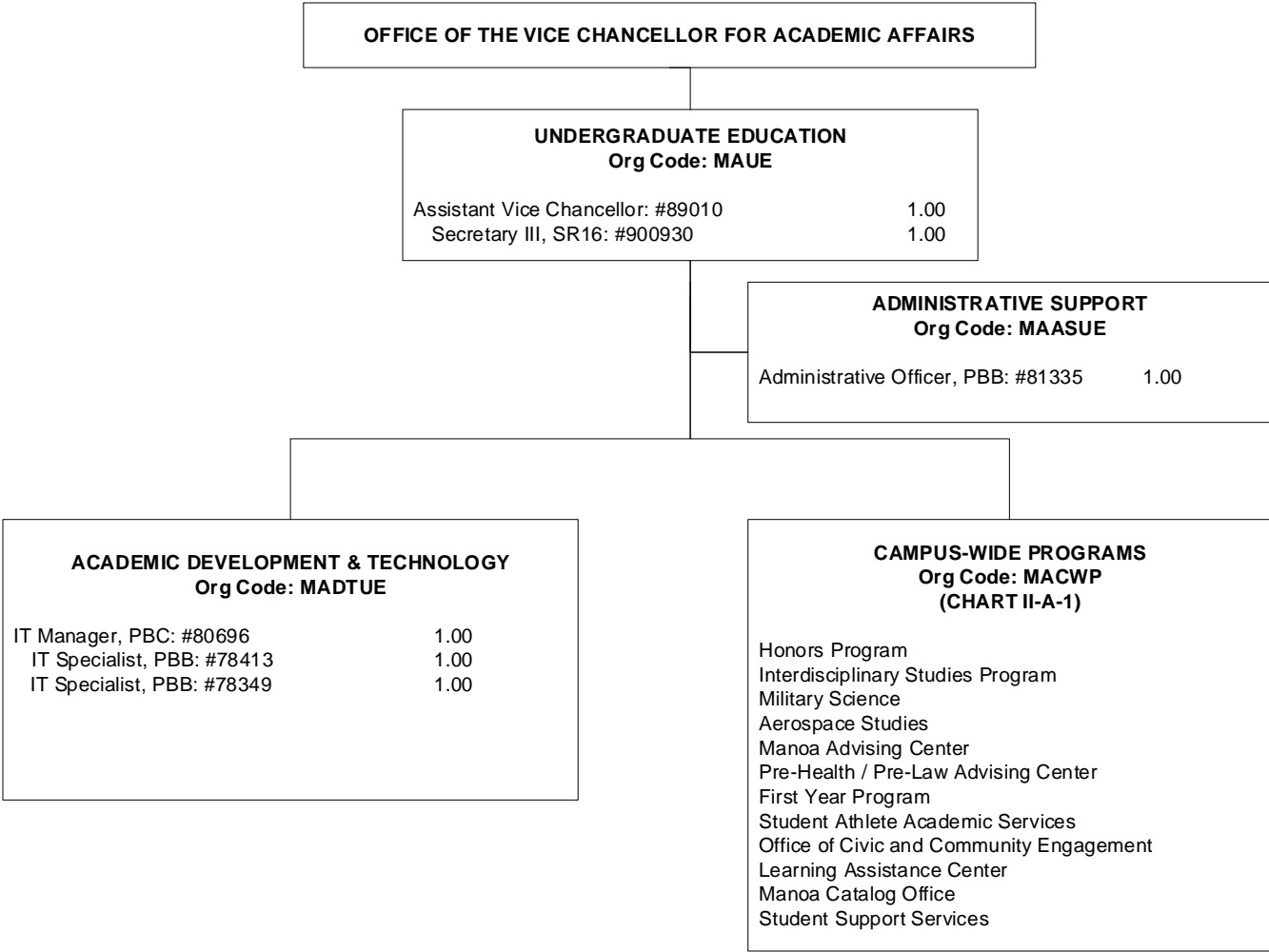


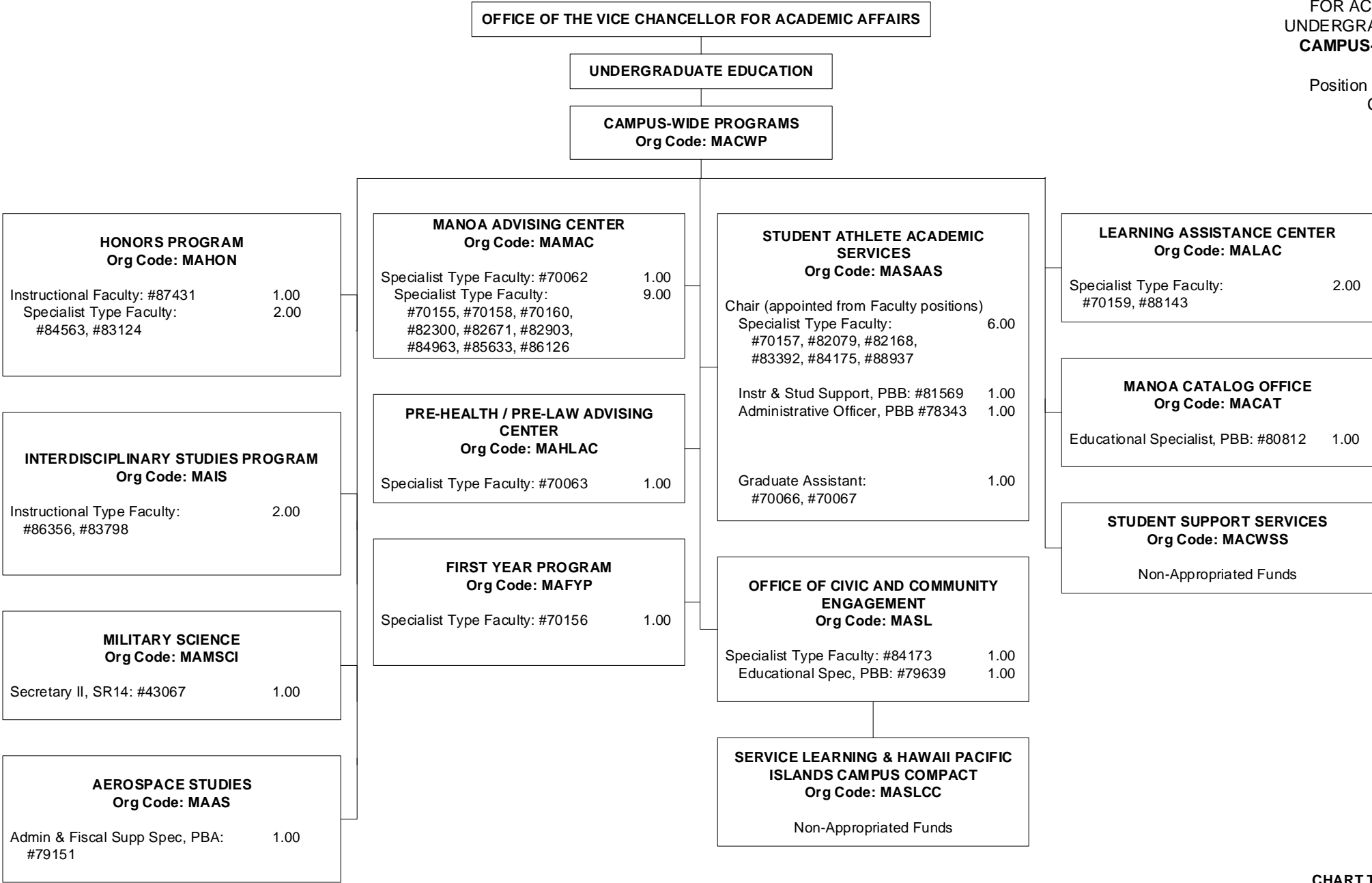
STATE OF HAWAI'I
UNIVERSITY OF HAWAI'I
UNIVERSITY OF HAWAI'I AT MĀNOA
OFFICE OF THE PROVOST
OFFICE OF THE VICE CHANCELLOR
FOR ACADEMIC AFFAIRS

Position Organization Chart
Chart II

DEPARTMENT TOTAL:	PERM	TEMP
General Funds:	104.00	

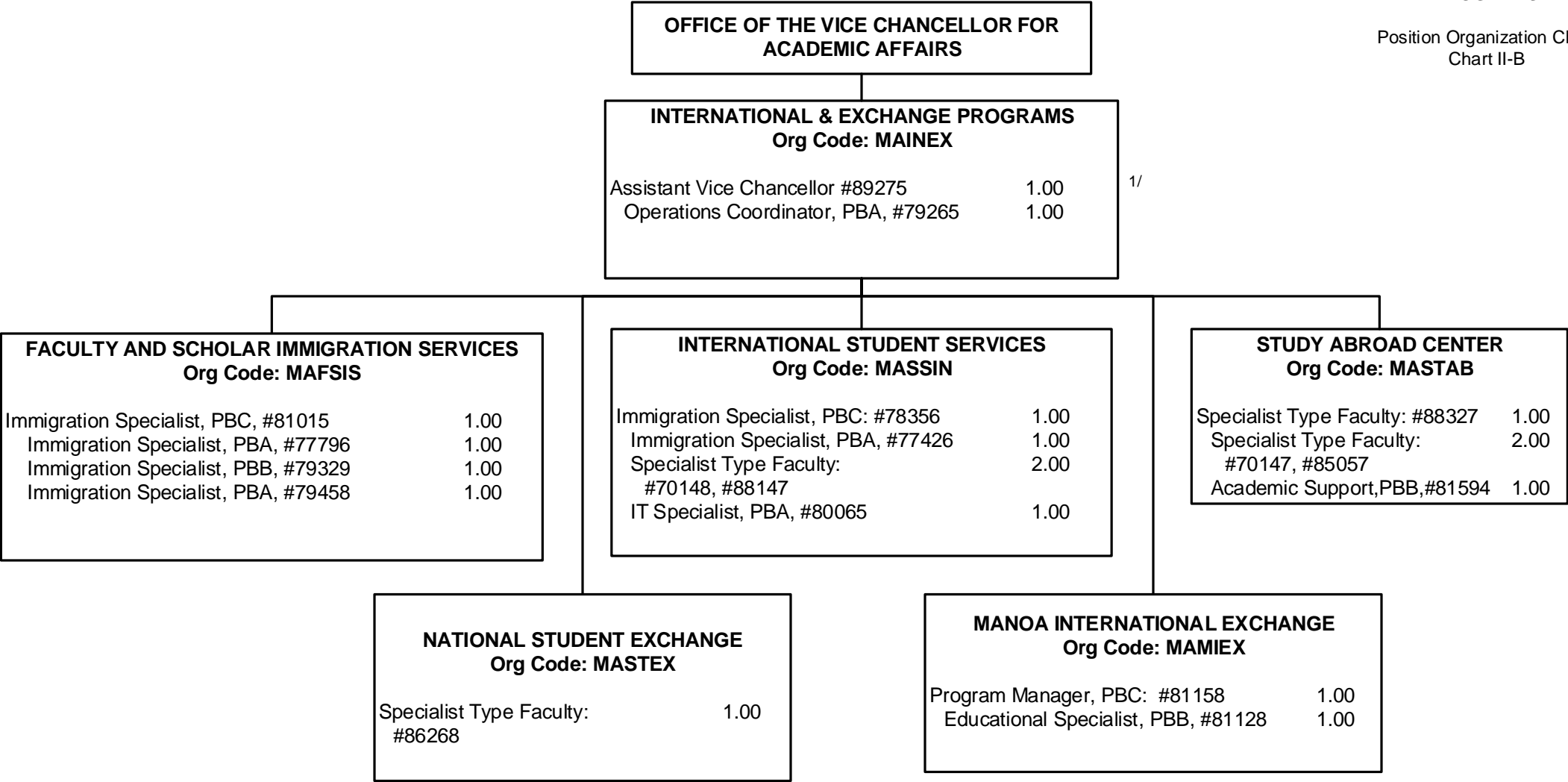


Position Organization Chart
Chart II-A-1



STATE OF HAWAI'I
UNIVERSITY OF HAWAI'I
UNIVERSITY OF HAWAI'I AT MĀNOA
OFFICE OF THE PROVOST
OFFICE OF THE VICE CHANCELLOR
FOR ACADEMIC AFFAIRS
INTERNATIONAL & EXCHANGE
PROGRAMS

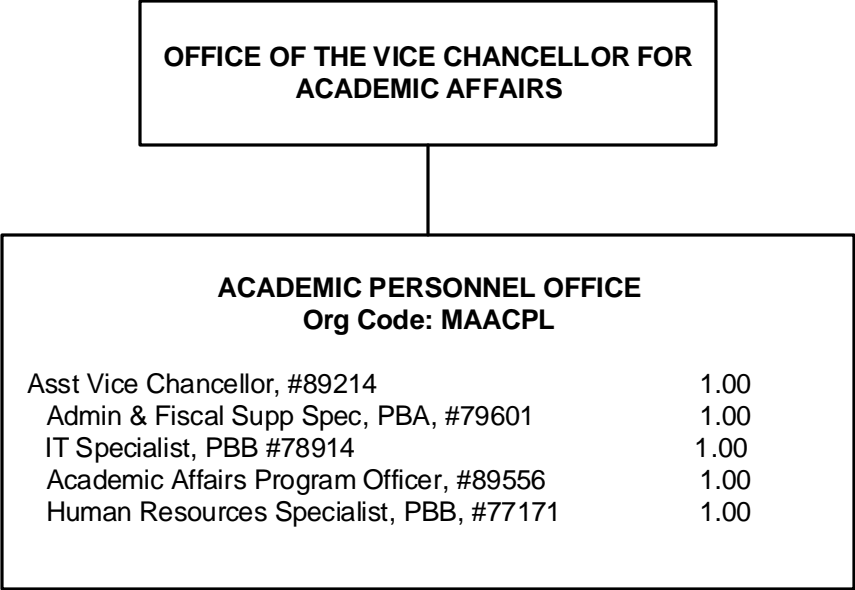
Position Organization Chart
Chart II-B

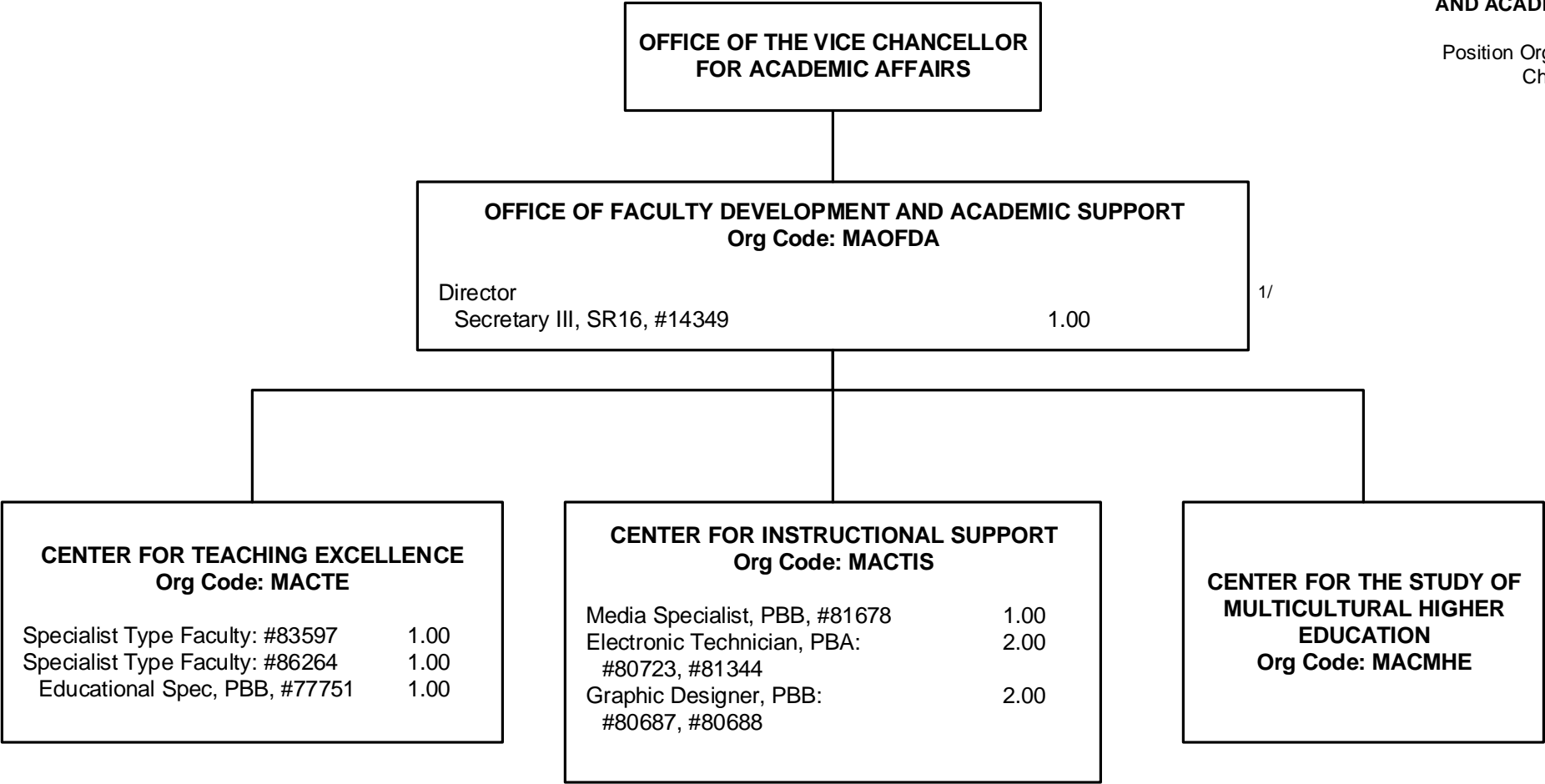


1/ Asst Vice Chancellor of International & Exchange Programs appointed from a Dean position.

STATE OF HAWAI'I
UNIVERSITY OF HAWAI'I
UNIVERSITY OF HAWAI'I AT MĀNOA
OFFICE OF THE PROVOST
OFFICE OF THE VICE CHANCELLOR
FOR ACADEMIC AFFAIRS
ACADEMIC PERSONNEL OFFICE

Position Organization Chart
Chart II-C

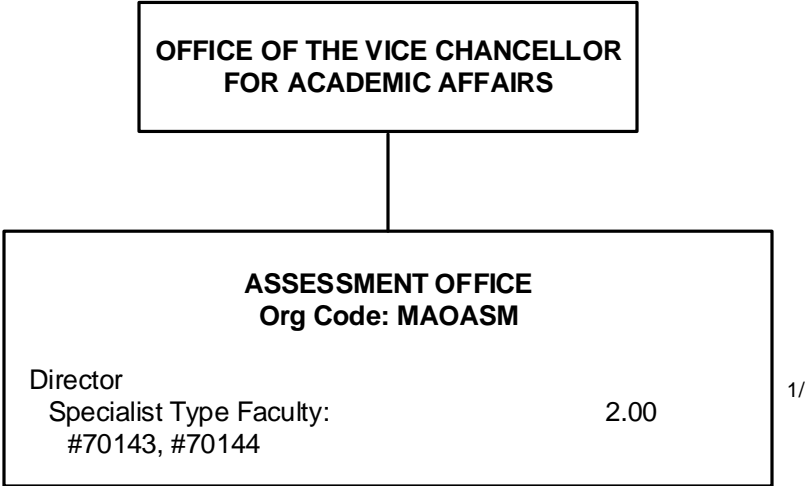




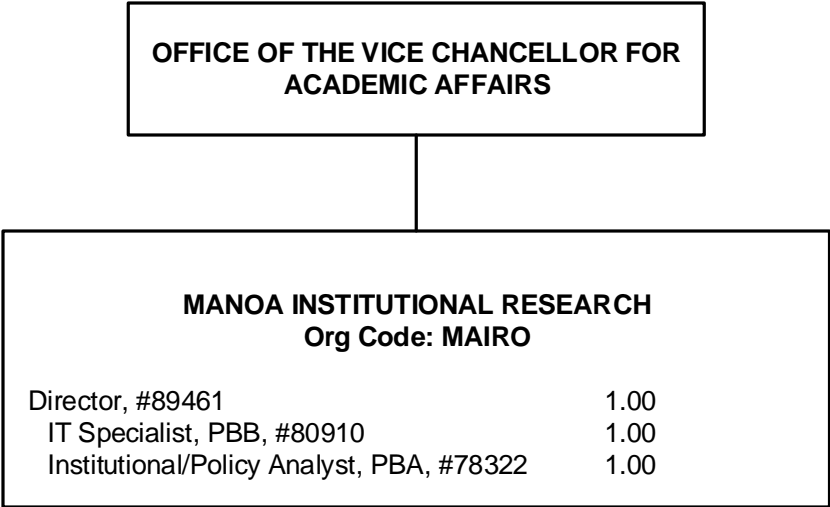
1/ Director appointed from a faculty position to oversee OFDAS operations.

STATE OF HAWAI'I
UNIVERSITY OF HAWAI'I
UNIVERSITY OF HAWAI'I AT MĀNOA
OFFICE OF THE PROVOST
OFFICE OF THE VICE CHANCELLOR
FOR ACADEMIC AFFAIRS
ASSESSMENT OFFICE

Position Organization Chart
Chart II-E

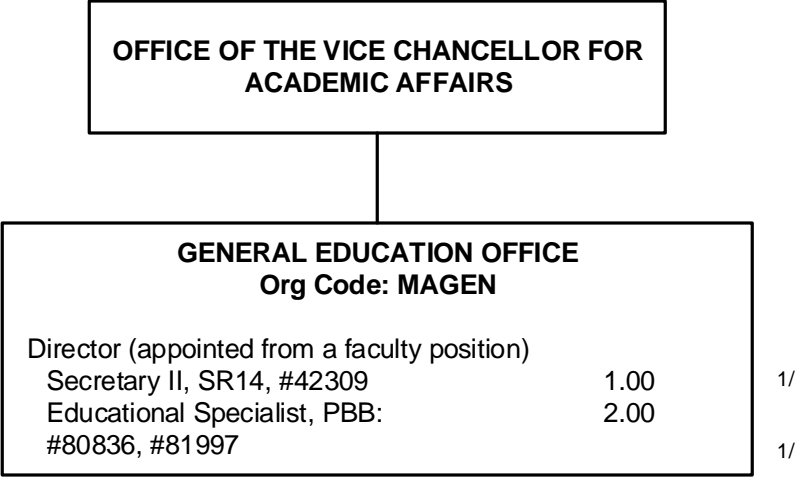


1/ Director appointed from a faculty position to oversee Assessment operations.



STATE OF HAWAI'I
UNIVERSITY OF HAWAI'I
UNIVERSITY OF HAWAI'I AT MĀNOA
OFFICE OF THE PROVOST
OFFICE OF THE VICE CHANCELLOR
FOR ACADEMIC AFFAIRS
GENERAL EDUCATION OFFICE

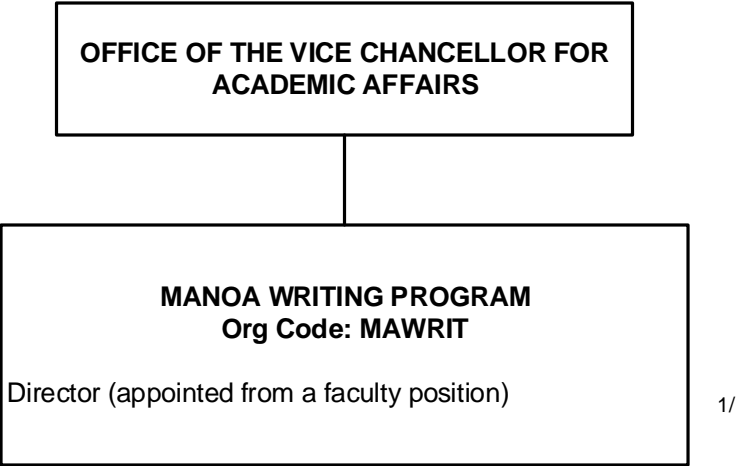
Position Organization Chart
Chart II-G



1/ Secretary II, #42309 and Educ Spec, #81997 partially support the Mānoa Writing Program.

STATE OF HAWAI'I
UNIVERSITY OF HAWAI'I
UNIVERSITY OF HAWAI'I AT MĀNOA
OFFICE OF THE PROVOST
OFFICE OF THE VICE CHANCELLOR
FOR ACADEMIC AFFAIRS
MĀNOA WRITING PROGRAM

Position Organization Chart
Chart II-H



1/ Positions in the General Education Office partially support this Office: Secretary II, SR14, #42309 and Educational Specialists, PBB, #80836, #81997. Primary supervisor is General Education Office Director.

