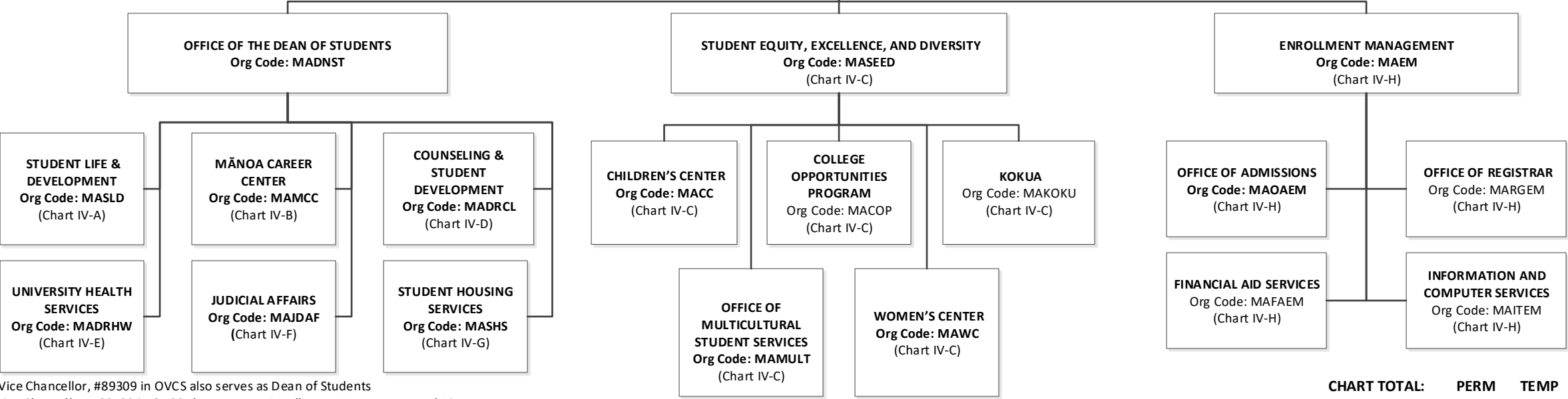
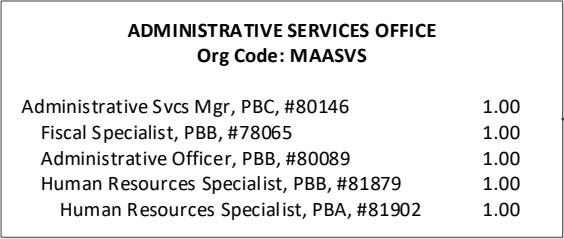


STATE OF HAWAI'I  
UNIVERSITY OF HAWAI'I  
UNIVERSITY OF HAWAI'I AT MĀNOA  
OFFICE OF THE PROVOST  
OFFICE OF THE VICE CHANCELLOR FOR STUDENTS

ORGANIZATION CHART

Chart IV

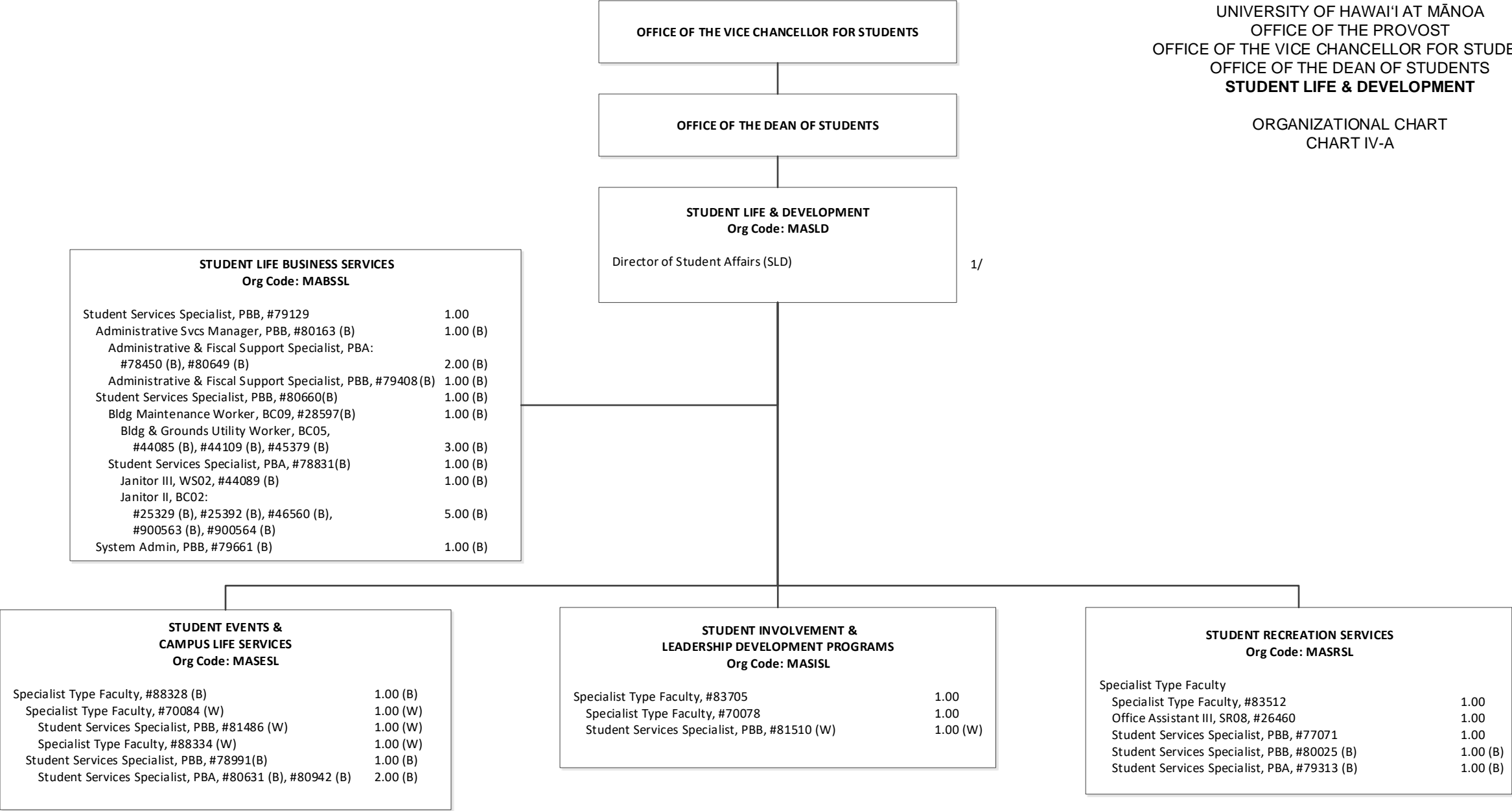
DEPARTMENT TOTAL:	PERM	TEMP
General Funds:	157.00	3.00
Special Funds (B):	99.00	--
Revolving Funds (W):	18.00	--



1/ Associate Vice Chancellor, #89309 in OVCS also serves as Dean of Students  
2/ Assistant Vice Chancellor, #89133 in OVCS also serves as Enrollment Management and Director  
3/ Assistant Vice Chancellor, #89479 in OVCS also serves as Director of SEED  
4/ Retention Specialist, PBB, #80661, Research & Assessment Specialist, #82864 and Director of Student Affairs, #89298 in OVCS abolished by Legislature 6/30/20

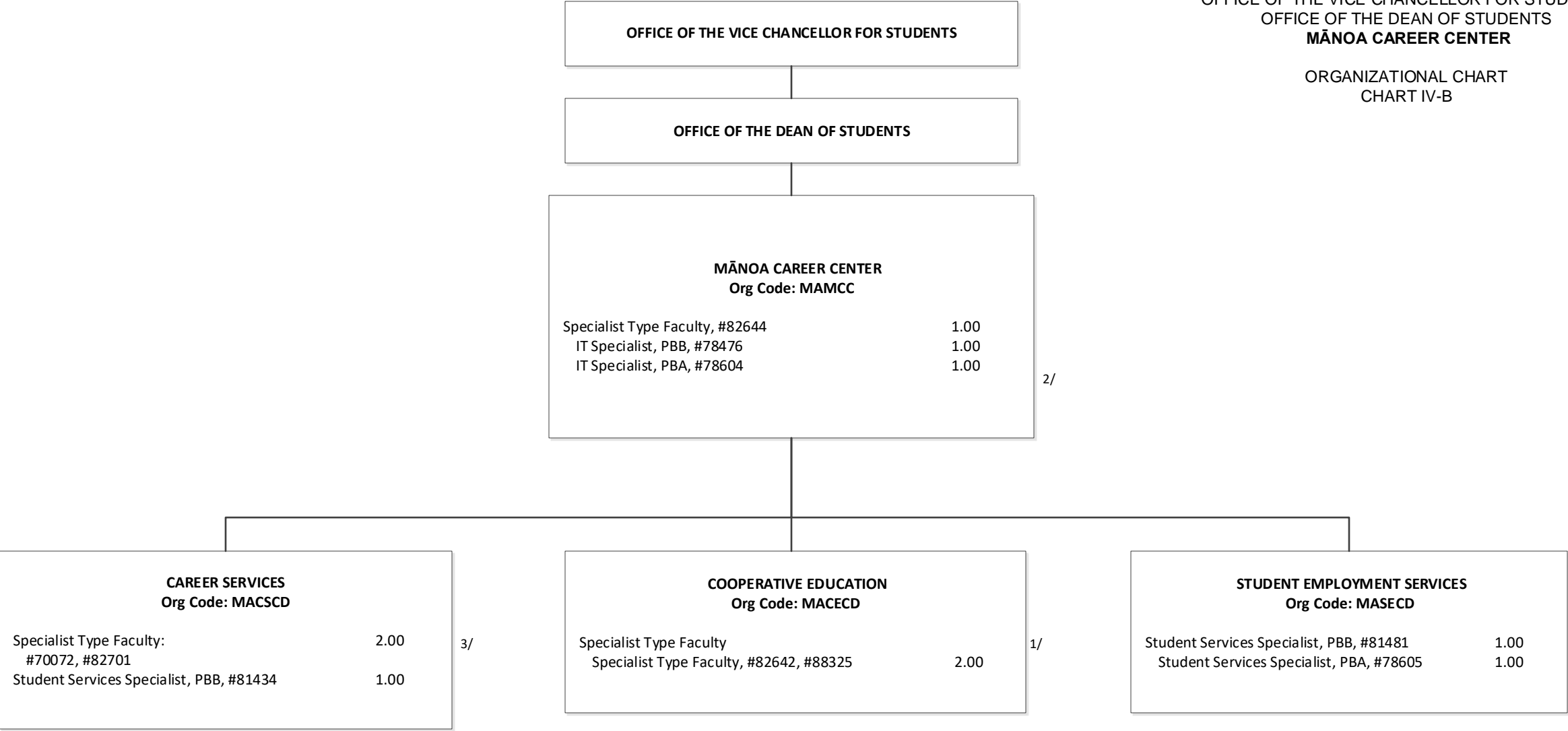
CHART TOTAL:	PERM	TEMP
General Funds:	15.00	--

STATE OF HAWAI'I  
UNIVERSITY OF HAWAI'I  
UNIVERSITY OF HAWAI'I AT MĀNOA  
OFFICE OF THE PROVOST  
OFFICE OF THE VICE CHANCELLOR FOR STUDENTS  
OFFICE OF THE DEAN OF STUDENTS  
STUDENT LIFE & DEVELOPMENT  
  
ORGANIZATIONAL CHART  
CHART IV-A



1/ Director of Student Affairs (SLD), #89190 and Student Services Specialist, PBA, #78447 in Student Life & Development abolished by Legislature 6/30/20

CHART TOTAL:	PERM	TEMP
General Funds:	6.00	--
Special Funds (B):	23.00	--
Revolving Funds (W):	4.00	--



1/ Specialist Type Faculty, #88117 in Cooperative Education swept into Chancellor’s Pool 11/7/17; abolished by Legislature 6/30/20  
2/ Instr & Student Support, PBA, #79844 and Graphic Designer, PBA, #80453T in Manoa Career Center abolished by Legislature 6/30/20  
3/ Specialist Type Faculty, #88125 in Career Services abolished by Legislature 6/30/20

STATE OF HAWAI'I

UNIVERSITY OF HAWAI'I

UNIVERSITY OF HAWAI'I AT MĀNOA

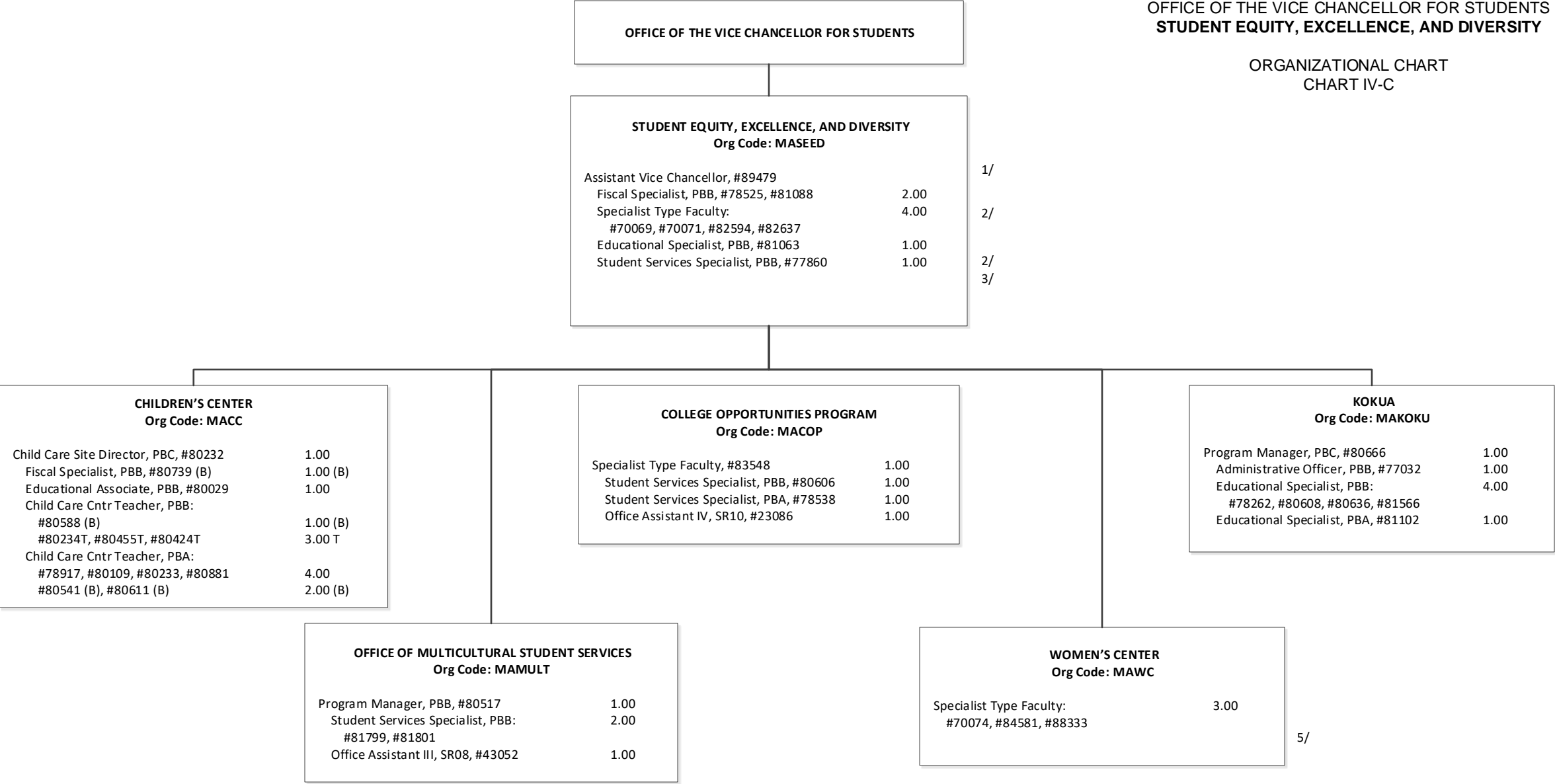
OFFICE OF THE PROVOST

OFFICE OF THE VICE CHANCELLOR FOR STUDENTS

STUDENT EQUITY, EXCELLENCE, AND DIVERSITY

ORGANIZATIONAL CHART

CHART IV-C



1/ Assistant Vice Chancellor, #89479 in Student Equity, Excellence and Diversity position count reflected on Chart IV

2/ Specialist Type Faculty, #70070, Student Services Specialist, PBB, #78524 and Student Services Specialist, PBB, #78970 in SEED abolished by Legislature 6/30/20

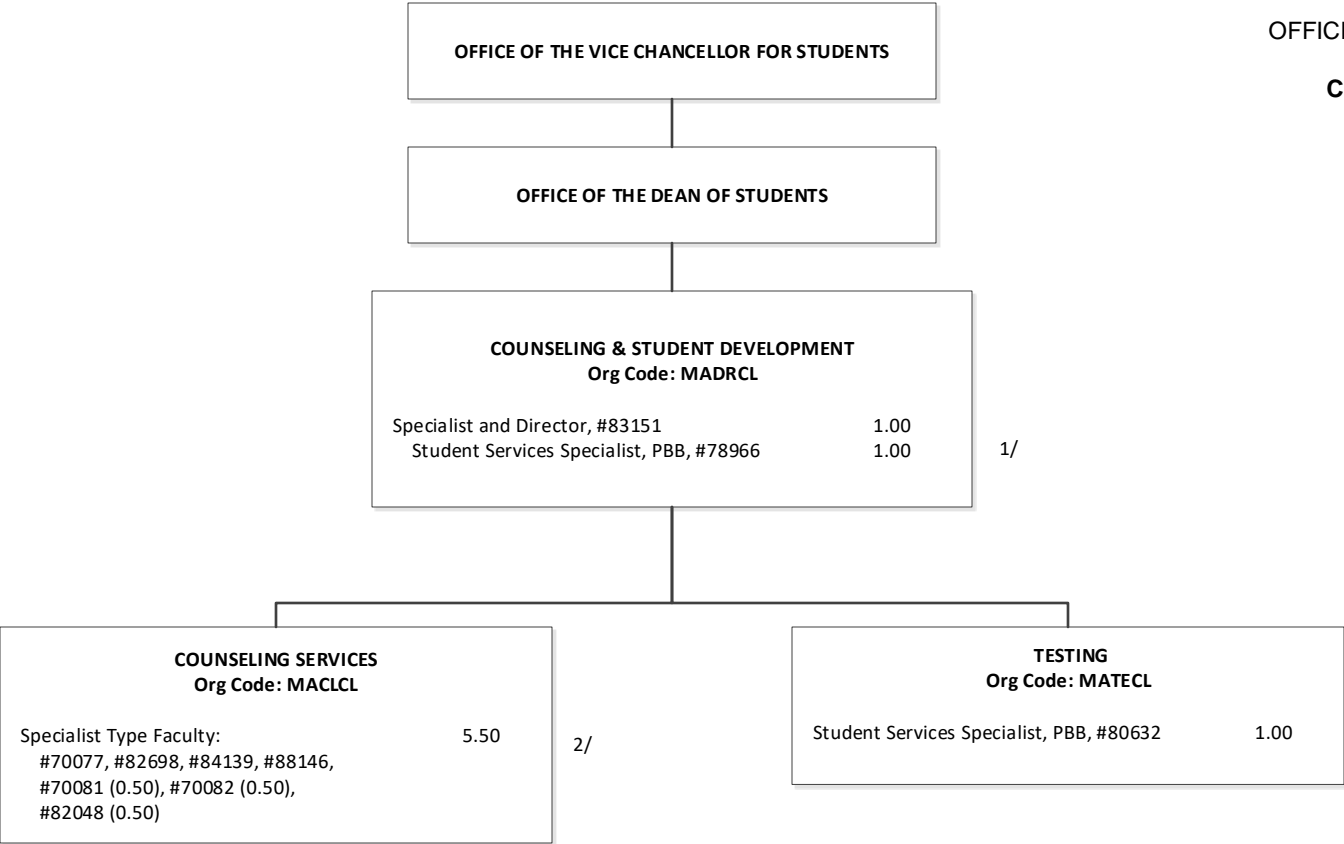
3/ Program Manager, PBB, #81904 in SEED transferred to HSHK 10/4/19

4/ Educational Specialist, PBB, #78261 in KOKUA abolished by Legislature 6/30/20

5/ Student Services Specialist, PBB, #78526 in Women’s Center abolished by Legislature 6/30/20

Abolished position #70073 (1.00 FTE)

CHART TOTAL:	PERM	TEMP
General Funds:	33.00	3.00
Special Funds (B):	4.00	--



1/ Student Services Specialist, PBB, #81782 in Counseling & Student Development abolished by Legislature 6/30/20  
2/ Specialist Type Faculty, #70075 (.050), #83635 (0.50), #85059 and #85063 in Counseling Services abolished by Legislature 6/30/20

STATE OF HAWAI'I  
UNIVERSITY OF HAWAI'I  
UNIVERSITY OF HAWAI'I AT MĀNOA  
OFFICE OF THE PROVOST  
OFFICE OF THE VICE CHANCELLOR FOR STUDENTS  
OFFICE OF THE DEAN OF STUDENTS  
UNIVERSITY HEALTH SERVICES

ORGANIZATIONAL CHART  
CHART IV-E

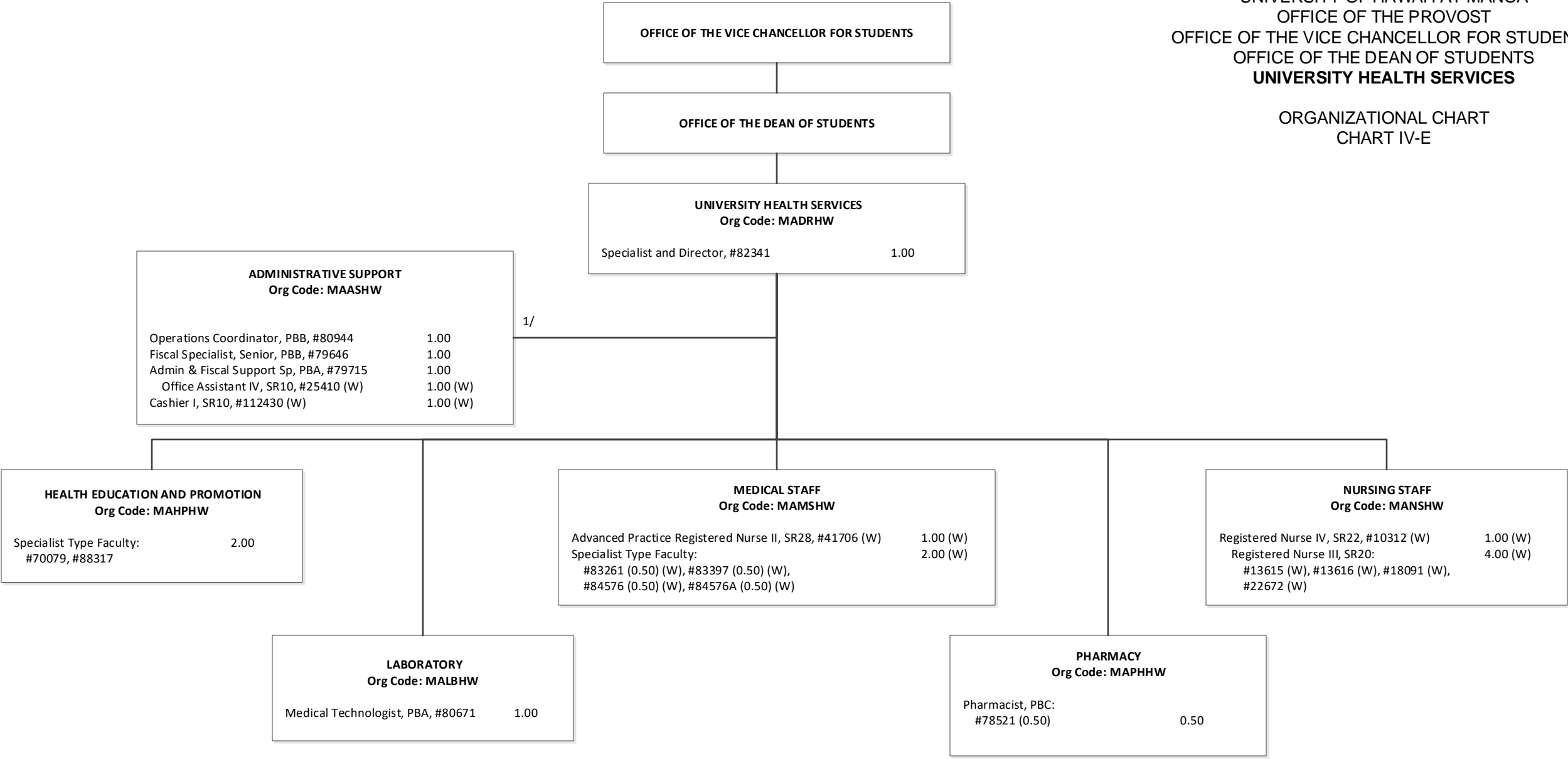
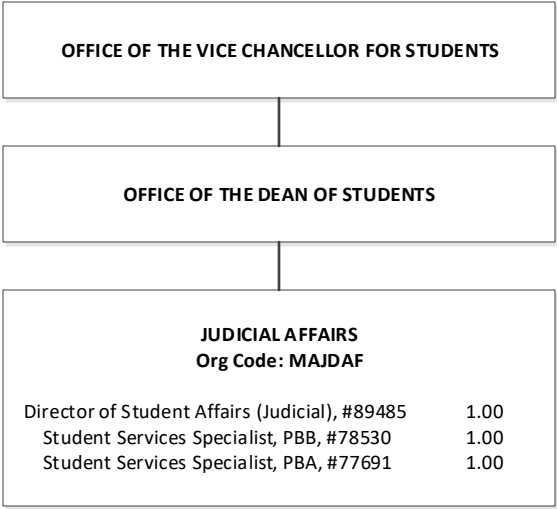


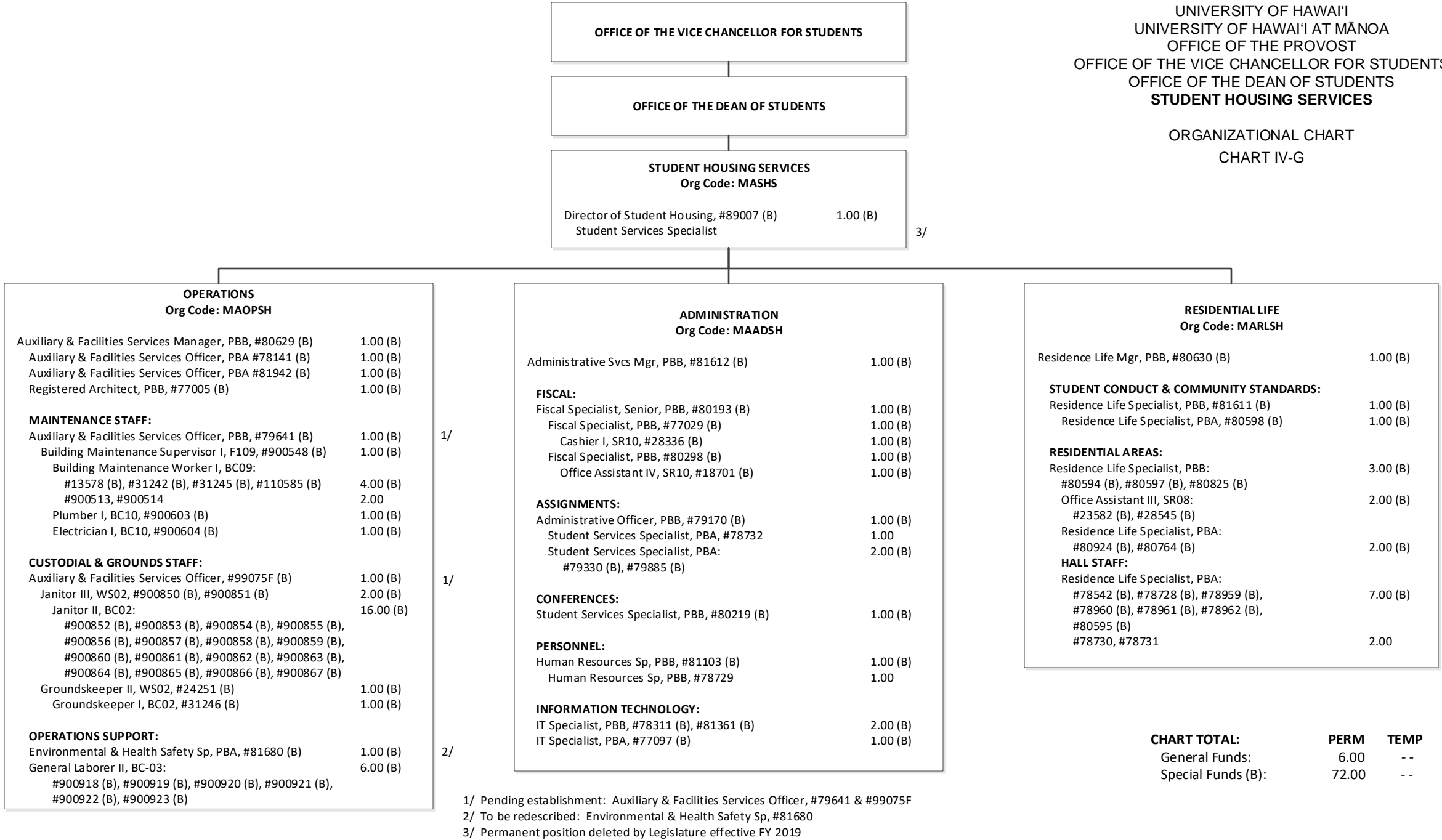
CHART TOTAL:	PERM	TEMP
General Funds:	7.50	--
Revolving Funds (W):	10.00	--

STATE OF HAWAI'I  
UNIVERSITY OF HAWAI'I  
UNIVERSITY OF HAWAI'I AT MĀNOA  
OFFICE OF THE PROVOST  
OFFICE OF THE VICE CHANCELLOR FOR STUDENTS  
OFFICE OF THE DEAN OF STUDENTS  
JUDICIAL AFFAIRS  
  
ORGANIZATIONAL CHART  
CHART IV-F

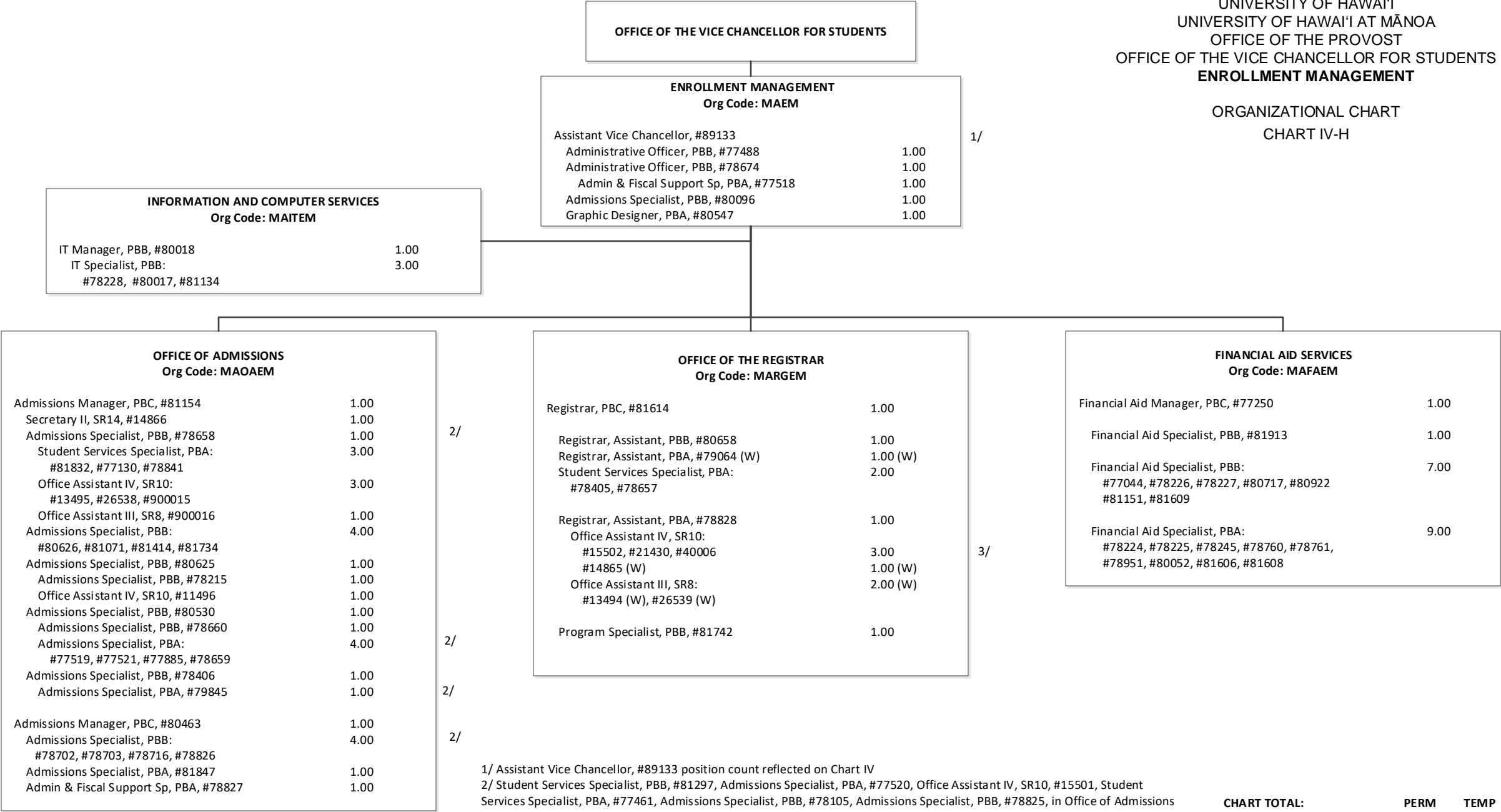


STATE OF HAWAI'I  
UNIVERSITY OF HAWAI'I  
UNIVERSITY OF HAWAI'I AT MĀNOA  
OFFICE OF THE PROVOST  
OFFICE OF THE VICE CHANCELLOR FOR STUDENTS  
OFFICE OF THE DEAN OF STUDENTS  
**STUDENT HOUSING SERVICES**

ORGANIZATIONAL CHART  
CHART IV-G



STATE OF HAWAI'I  
UNIVERSITY OF HAWAI'I  
UNIVERSITY OF HAWAI'I AT MĀNOA  
OFFICE OF THE PROVOST  
OFFICE OF THE VICE CHANCELLOR FOR STUDENTS  
**ENROLLMENT MANAGEMENT**  
  
ORGANIZATIONAL CHART  
CHART IV-H



1/ Assistant Vice Chancellor, #89133 position count reflected on Chart IV

2/ Student Services Specialist, PBB, #81297, Admissions Specialist, PBA, #77520, Office Assistant IV, SR10, #15501, Student Services Specialist, PBA, #77461, Admissions Specialist, PBB, #78105, Admissions Specialist, PBB, #78825, in Office of Admissions abolished by Legislature 6/30/20

3/ Office Assistant IV, SR10, #750, Office Assistant IV, SR10, #14864 in Office of the Registrar abolished by Legislature 6/30/20

4/ Financial Aid Specialist, PBB, #81607 abolished by Legislature 6/30/20

<b>CHART TOTAL:</b>	<b>PERM</b>	<b>TEMP</b>
General Funds:	68.00	--
Revolving Funds (W):	4.00	--