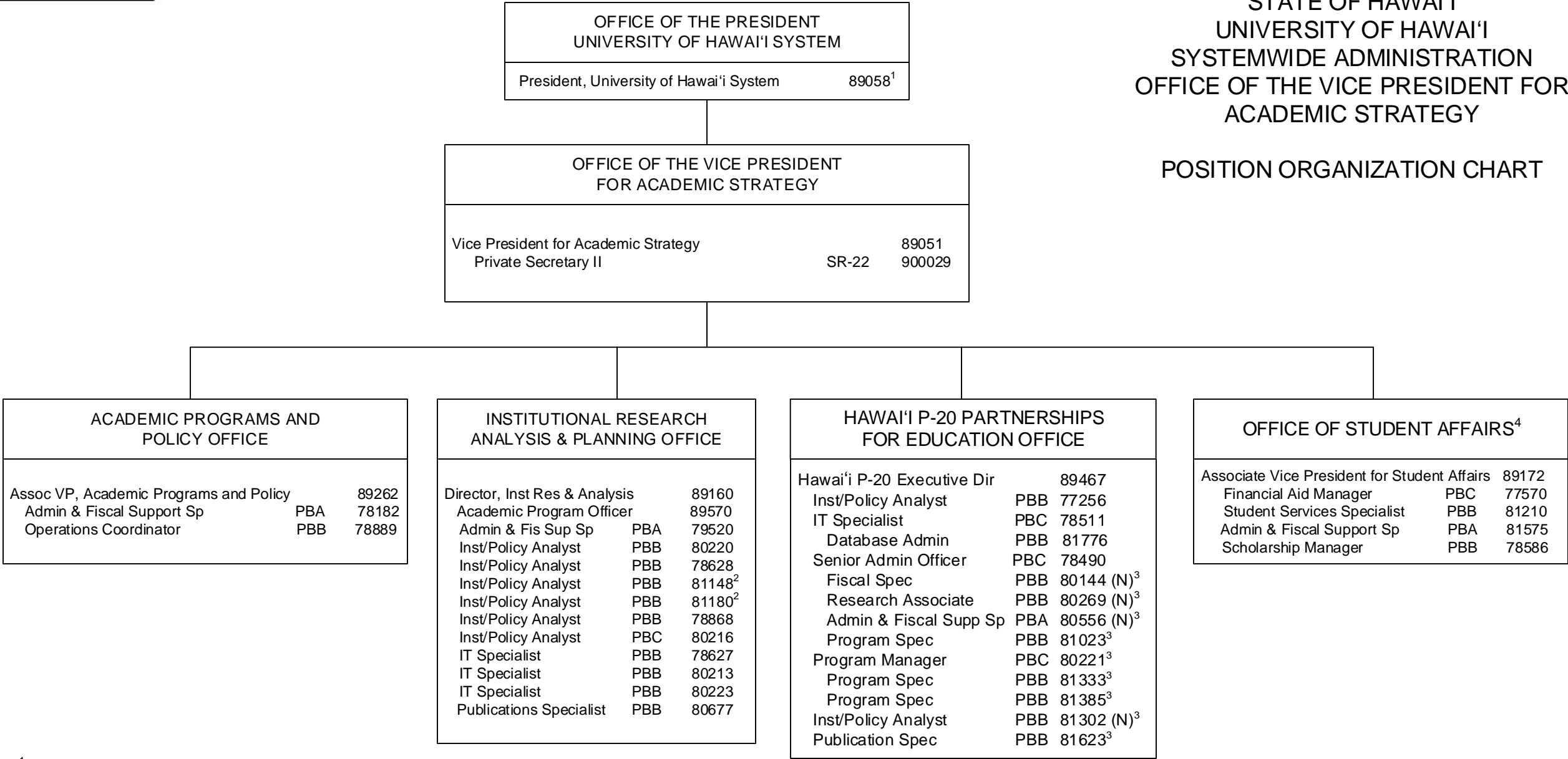


STATE OF HAWAI'I
UNIVERSITY OF HAWAI'I
SYSTEMWIDE ADMINISTRATION
OFFICE OF THE VICE PRESIDENT FOR
ACADEMIC STRATEGY

POSITION ORGANIZATION CHART



¹ Excluded from position count

² Part of UOH 902 appropriation, reflected organizationally on this chart

³ Part of UOH 904 appropriation, reflected organizationally on this chart
Includes position 89084 – State Director for Career and Technical Education

⁴ Serves as administrative liaison for the Hawaii Commission for National and Community Service and the National Corporation for Community Service

	Perm
General Fund (UOH 903)	26.00
General Fund (UOH 902)	2.00 ²
General Fund (UOH 904)	6.00 ³
Federal Fund (UOH 904)	4.00 ³