

OFFICE OF THE PRESIDENT
UNIVERSITY OF HAWAI'I SYSTEM

President, University of Hawai'i System89058¹

STATE OF HAWAI'I
UNIVERSITY OF HAWAI'I
SYSTEMWIDE ADMINISTRATION
VICE PRESIDENT FOR ADMINISTRATION

POSITION ORGANIZATION CHART

CHART I

OFFICE OF THE VICE PRESIDENT FOR ADMINISTRATION

Vice President for Administration89446

Associate Vice President for Administration89103

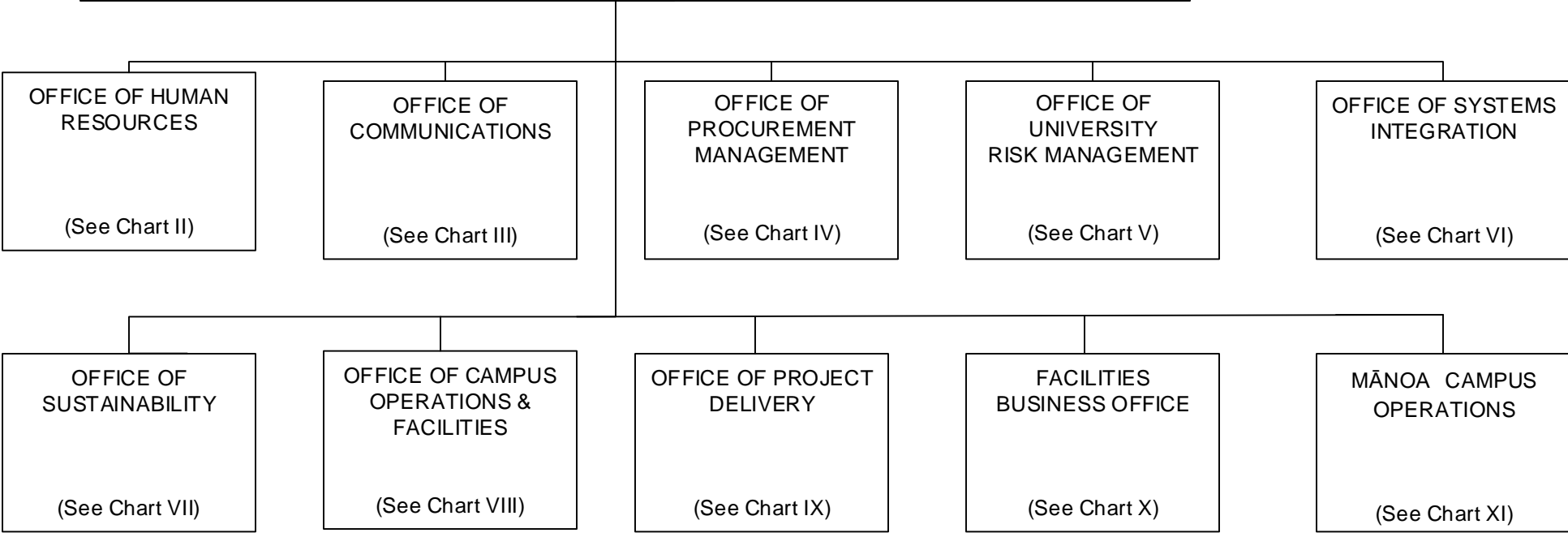
Project ManagerPBB80789*

Institutional/Policy AnalystPBB77074

Administrative OfficerPBB81367

Proc/Prop Mgt SpPBB80429(W)

Director of Planning & Project Development89153*



¹ Excluded from position count
² Appropriated but not established, 8 Special Fund (B) positions: 93926F – 93933F
* Positions appropriated to Manoa, reflected organizationally on this chart

	Perm
General Fund	4.00 (SW)
General Fund	2.00 (MA)*
Revolving Fund (W)	1.00 (SW)
Special Fund (B)	8.00 (SW) ²

OFFICE OF THE VICE PRESIDENT FOR ADMINISTRATION

Vice President for Administration89446¹

STATE OF HAWAI'I
UNIVERSITY OF HAWAI'I
SYSTEMWIDE ADMINISTRATION
VICE PRESIDENT FOR ADMINISTRATION
OFFICE OF HUMAN RESOURCES

POSITION ORGANIZATION CHART

CHART II

OFFICE OF HUMAN RESOURCES

System Director of Human Resources89310
Associate Director of Human Resources89425
Human Resources ManagerPBD77834
Admin & Fiscal Support SpPBA80093

EMPLOYEE SERVICES

COLLECTIVE BARGAINING AND EMPLOYEE RELATIONS

Director of Collective Bargaining
and Employee Relations89173
Labor Relations Officer79848

UNIT A

HR ManagerPBC80092
HR SpecialistPBB78386
HR SpecialistPBB80538
HR SpecialistPBB80384
HR SpecialistPBB80986

UNIT B

HR ManagerPBC78393
HR SpecialistPBB81200
HR SpecialistPBA78683
HR SpecialistPBB80179
HR SpecialistPBA81834
HR Assistant VSR-1312260

POLICIES & PROCEDURES & CLASSIFICATION

HR Specialist, SrPBC80540

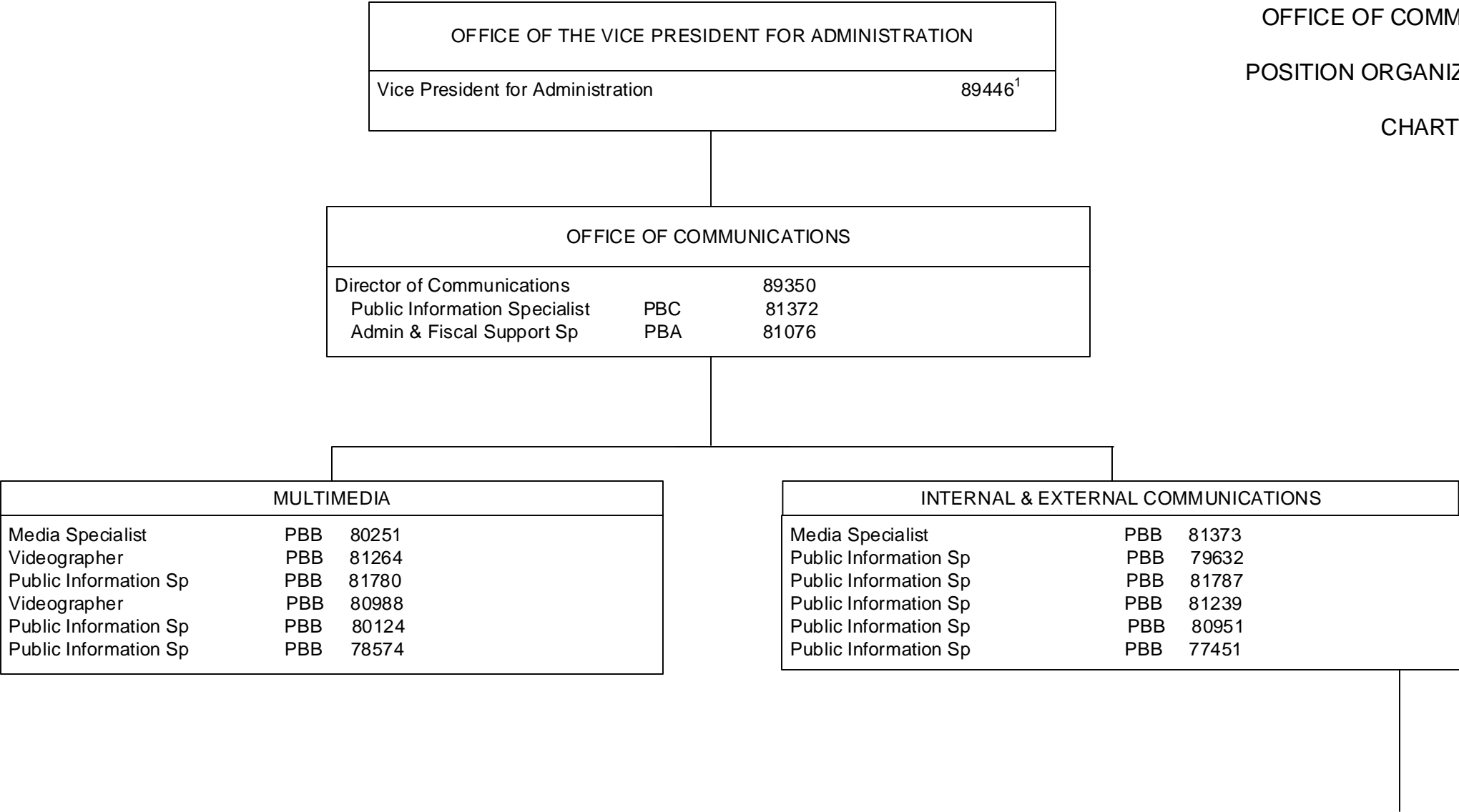
Perm
General Fund 18.00 (SW)

¹ Excluded from position count

STATE OF HAWAI'I
UNIVERSITY OF HAWAI'I
SYSTEMWIDE ADMINISTRATION
VICE PRESIDENT FOR ADMINISTRATION
OFFICE OF COMMUNICATIONS

POSITION ORGANIZATION CHART

CHART III

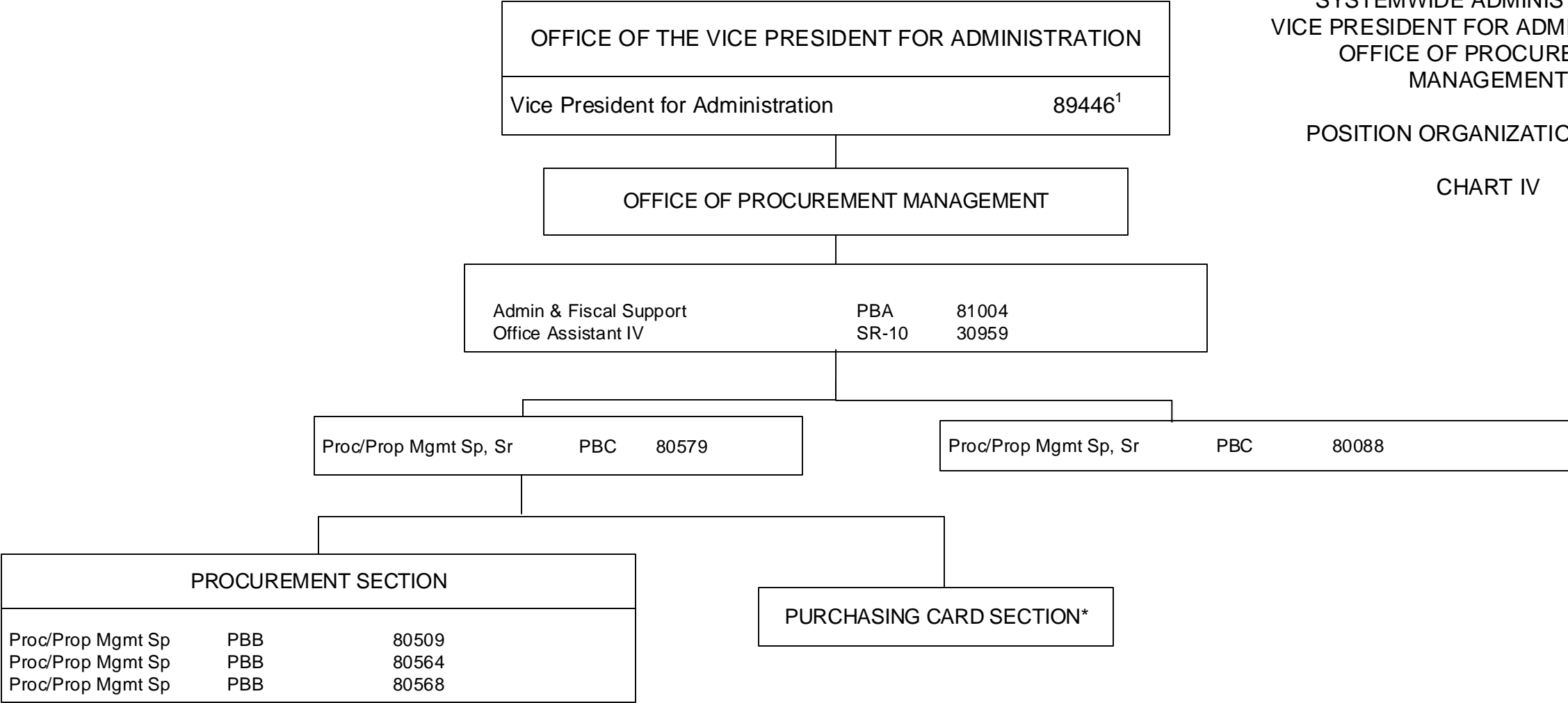


¹ Excluded from position count

STATE OF HAWAI'I
UNIVERSITY OF HAWAI'I
SYSTEMWIDE ADMINISTRATION
VICE PRESIDENT FOR ADMINISTRATION
OFFICE OF PROCUREMENT
MANAGEMENT

POSITION ORGANIZATION CHART

CHART IV



¹ Excluded from position count
* Includes temporary positions

STATE OF HAWAI'I
UNIVERSITY OF HAWAI'I
SYSTEMWIDE ADMINISTRATION
VICE PRESIDENT FOR ADMINISTRATION
OFFICE OF UNIVERSITY RISK
MANAGEMENT

POSITION ORGANIZATION CHART

CHART V

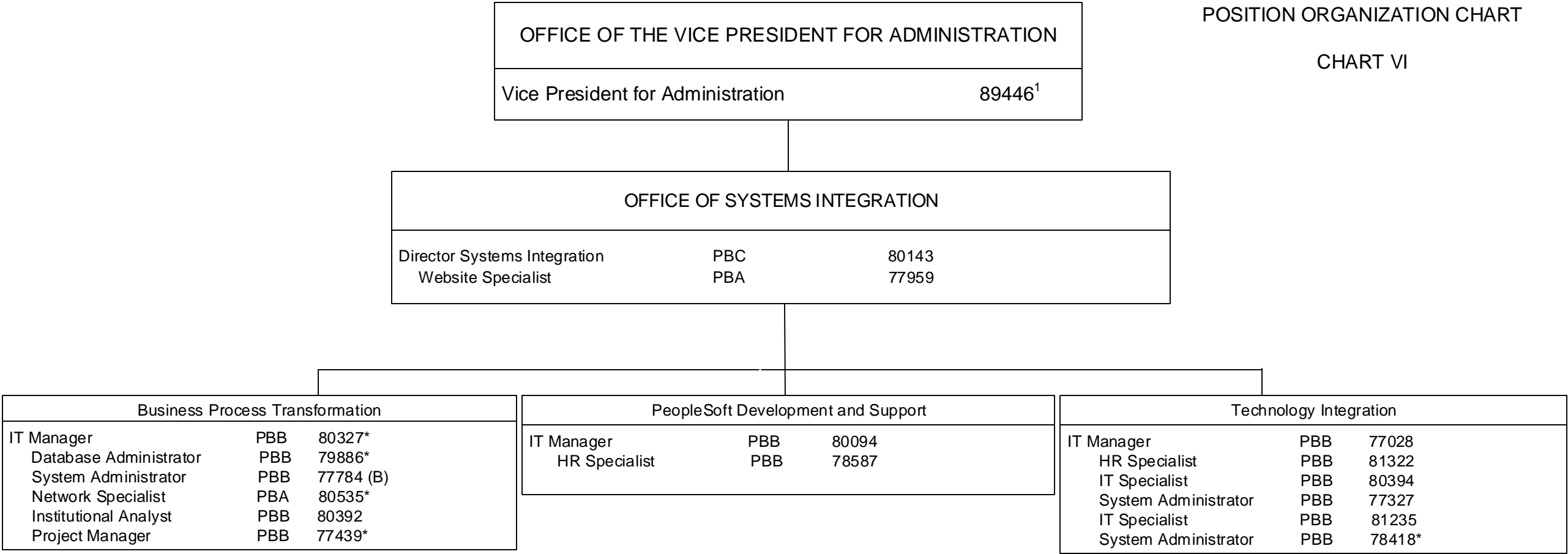
OFFICE OF THE VICE PRESIDENT FOR ADMINISTRATION		
Vice President for Administration		89446 ¹

OFFICE OF UNIVERSITY RISK MANAGEMENT		
Director of Risk Management		89162
Secretary III	SR-16	900066
Risk Management Sp	PBB	80642
Human Resources Sp	PBB	80493
Risk Management Sp	PBB	78819

¹ Excluded from position count

STATE OF HAWAI'I
UNIVERSITY OF HAWAI'I
SYSTEMWIDE ADMINISTRATION
VICE PRESIDENT FOR ADMINISTRATION
OFFICE OF SYSTEMS INTEGRATION

POSITION ORGANIZATION CHART
CHART VI



¹ Excluded from position count
* Positions appropriated to Manoa, reflected organizationally on this chart

Perm
General Fund 10.00 (SW)
General Fund 5.00 (MA)*
Special Fund (B) 1.00 (SW)

OFFICE OF THE VICE PRESIDENT FOR ADMINISTRATION		
Vice President for Administration		89446 ¹

OFFICE OF SUSTAINABILITY		
Director of Energy Management		89524
Operations Coordinator	PBB	78394
Operations Coordinator	PBA	80991

STATE OF HAWAI'I
UNIVERSITY OF HAWAI'I
SYSTEMWIDE ADMINISTRATION
VICE PRESIDENT FOR ADMINISTRATION
OFFICE OF SUSTAINABILITY

POSITION ORGANIZATION CHART

CHART VII

¹ Excluded from position count

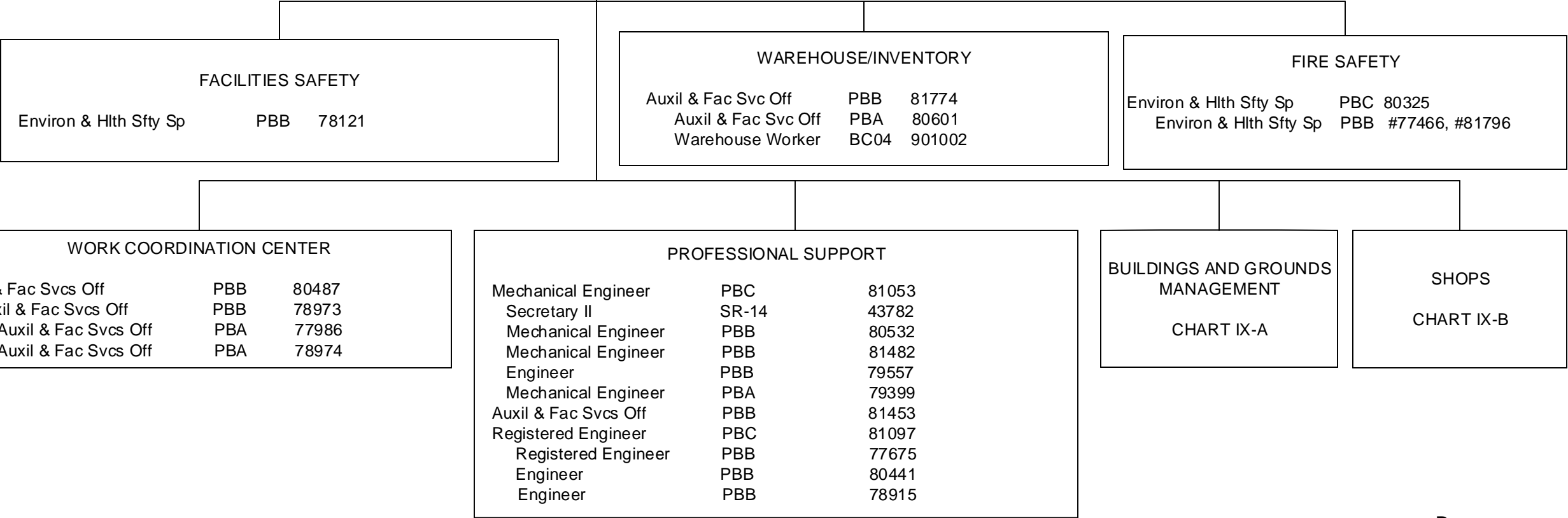
STATE OF HAWAI'I
UNIVERSITY OF HAWAI'I
SYSTEMWIDE ADMINISTRATION
VICE PRESIDENT FOR ADMINISTRATION
OFFICE OF CAMPUS OPERATIONS & FACILITIES

POSITION ORGANIZATION CHART

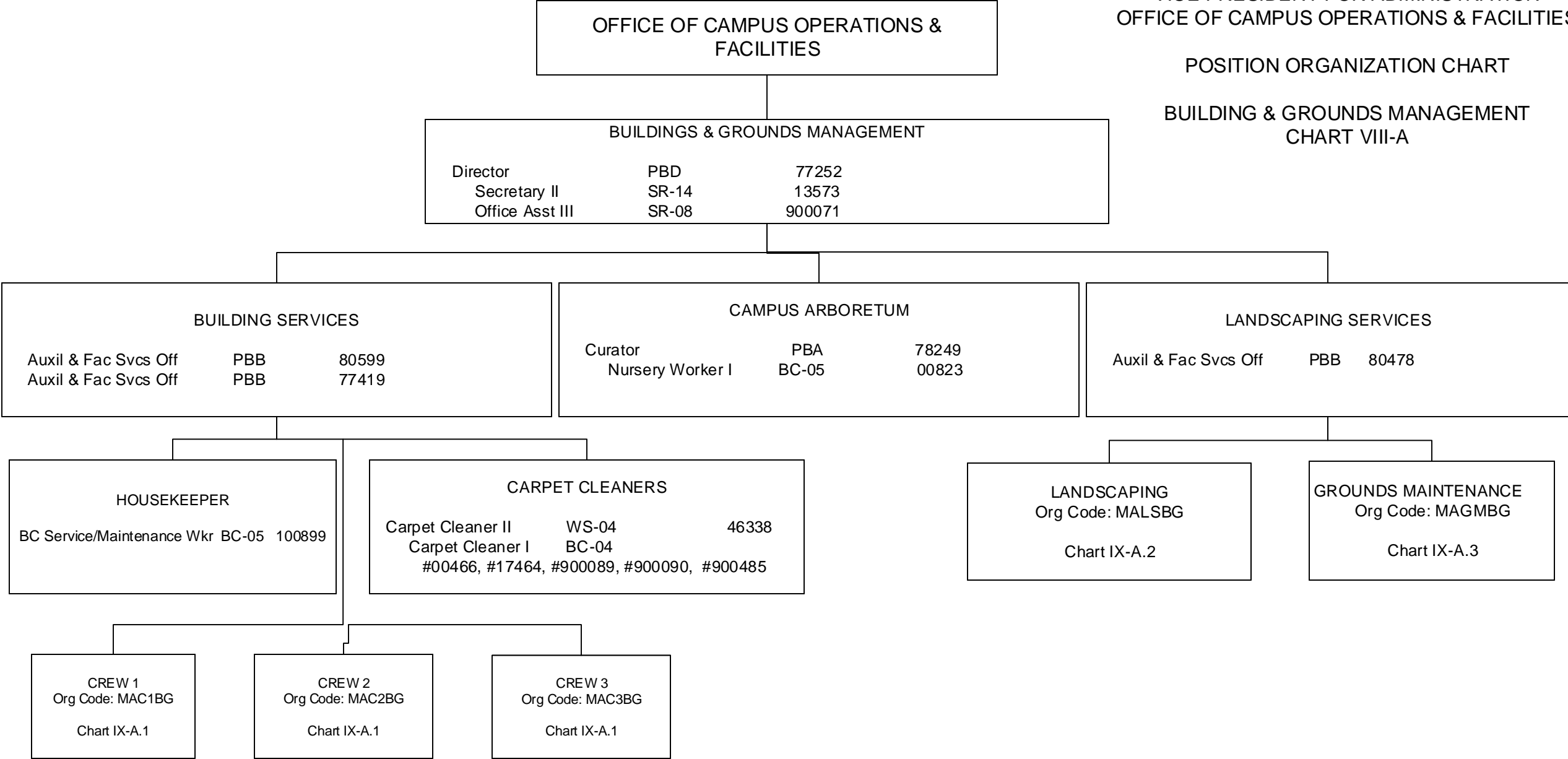
CHART VIII

OFFICE OF THE VICE PRESIDENT FOR ADMINISTRATION		
Vice President for Administration		89446 ¹

OFFICE OF CAMPUS OPERATIONS & FACILITIES		
Director	PBD	78777
Auxil & Fac Svcs Mgr	PBC	81250
Auxil & Fac Svcs Mgr	PBC	81505
Auxil & Fac Svcs Mgr	PBB	79535
Auxil & Fac Svcs Mgr	PBB	81818
Registered Architect	PBB	80790
Architect	PBB	80558



¹ Excluded from position count
* All positions on Chart VIII appropriated to Manoa, reflected organizationally on this chart

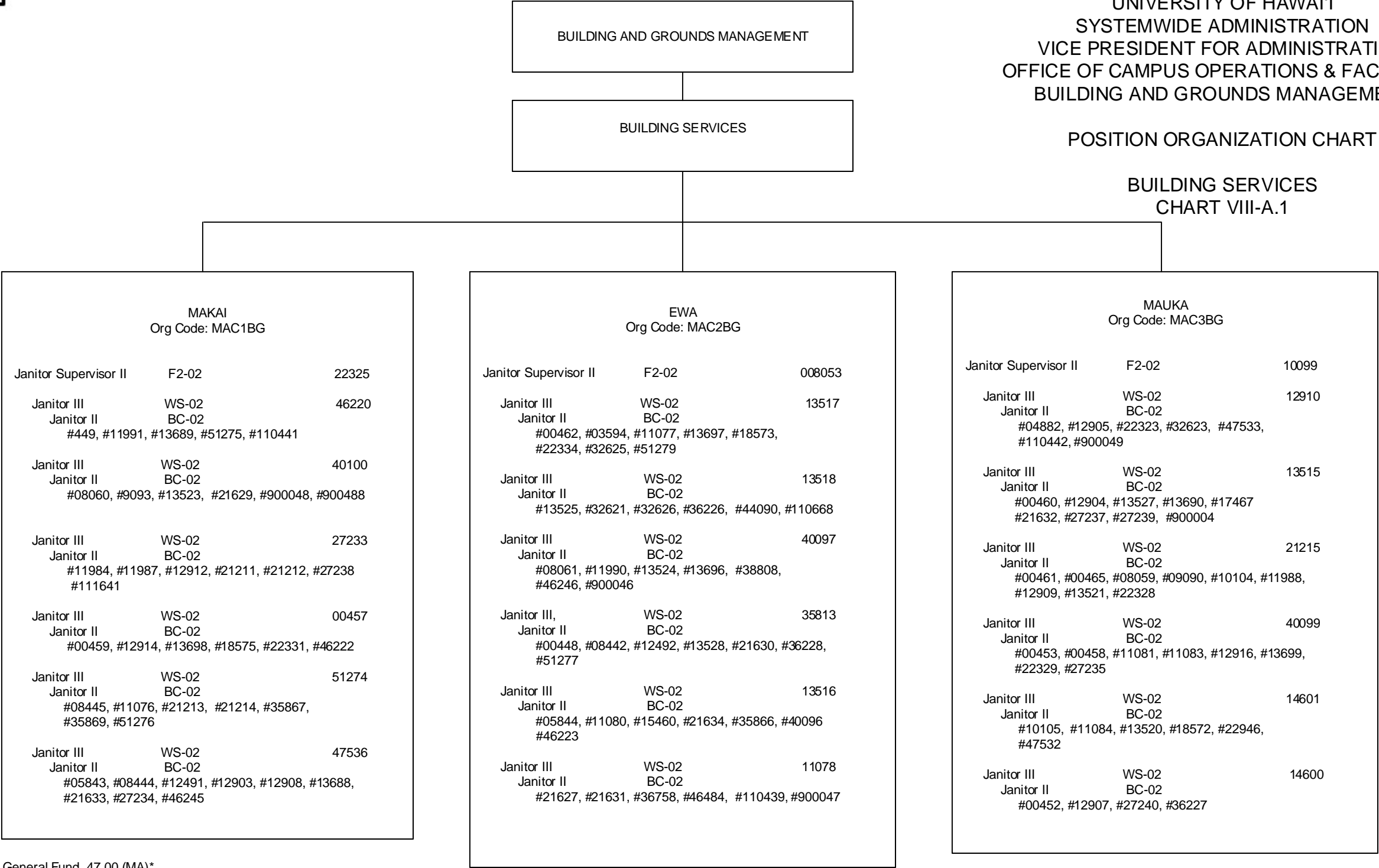


¹ Excluded from position count
* All positions on Chart IX-A appropriated to Manoa, reflected organizationally on this chart

STATE OF HAWAII
UNIVERSITY OF HAWAII
SYSTEMWIDE ADMINISTRATION
VICE PRESIDENT FOR ADMINISTRATION
OFFICE OF CAMPUS OPERATIONS & FACILITIES
BUILDING AND GROUNDS MANAGEMENT

POSITION ORGANIZATION CHART

BUILDING SERVICES
CHART VIII-A.1



General Fund 47.00 (MA)*

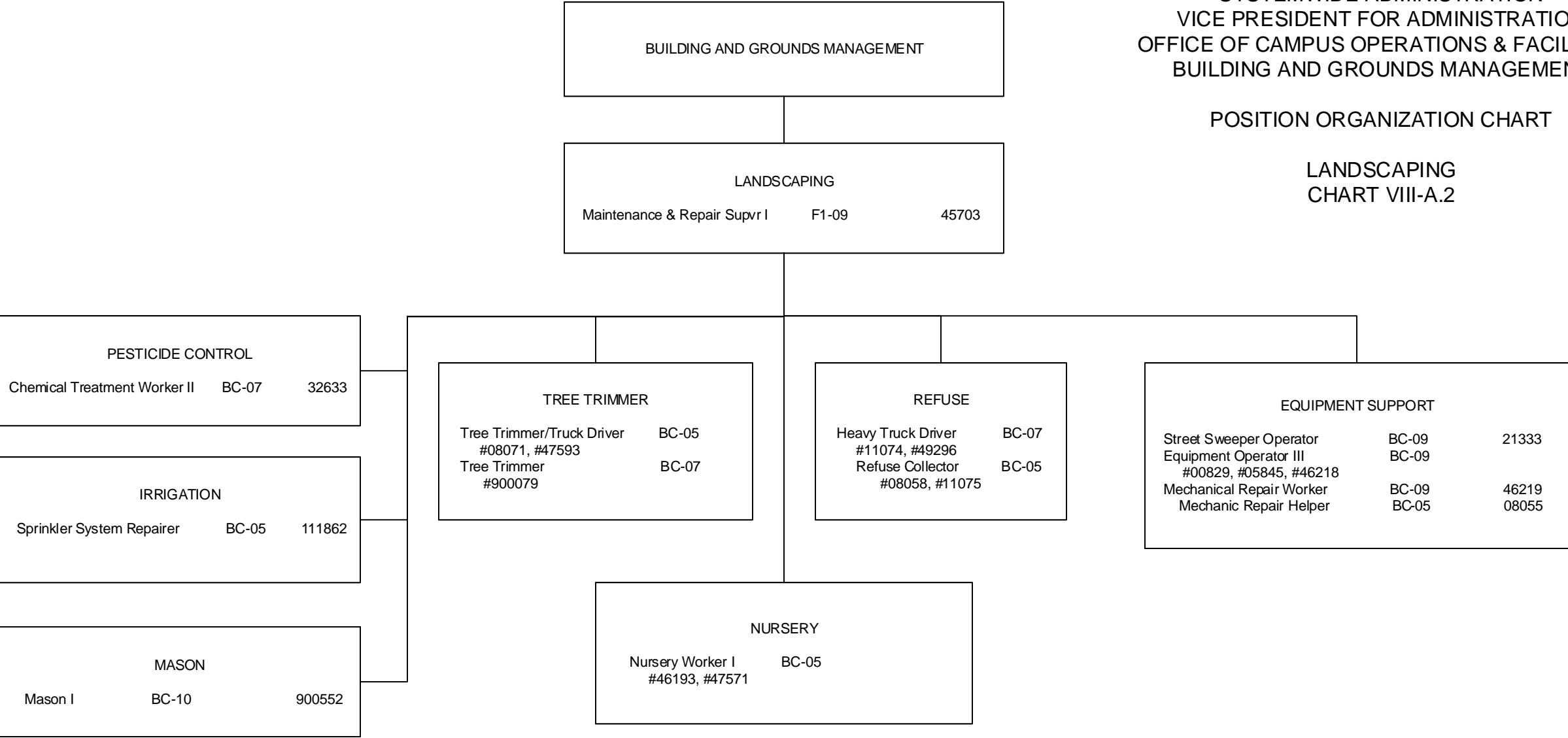
General Fund 48.00 (MA)*

General Fund 50.00 (MA)*

* All positions on Chart IX-A.1 appropriated to Manoa, reflected organizationally on this chart

POSITION ORGANIZATION CHART

LANDSCAPING
CHART VIII-A.2

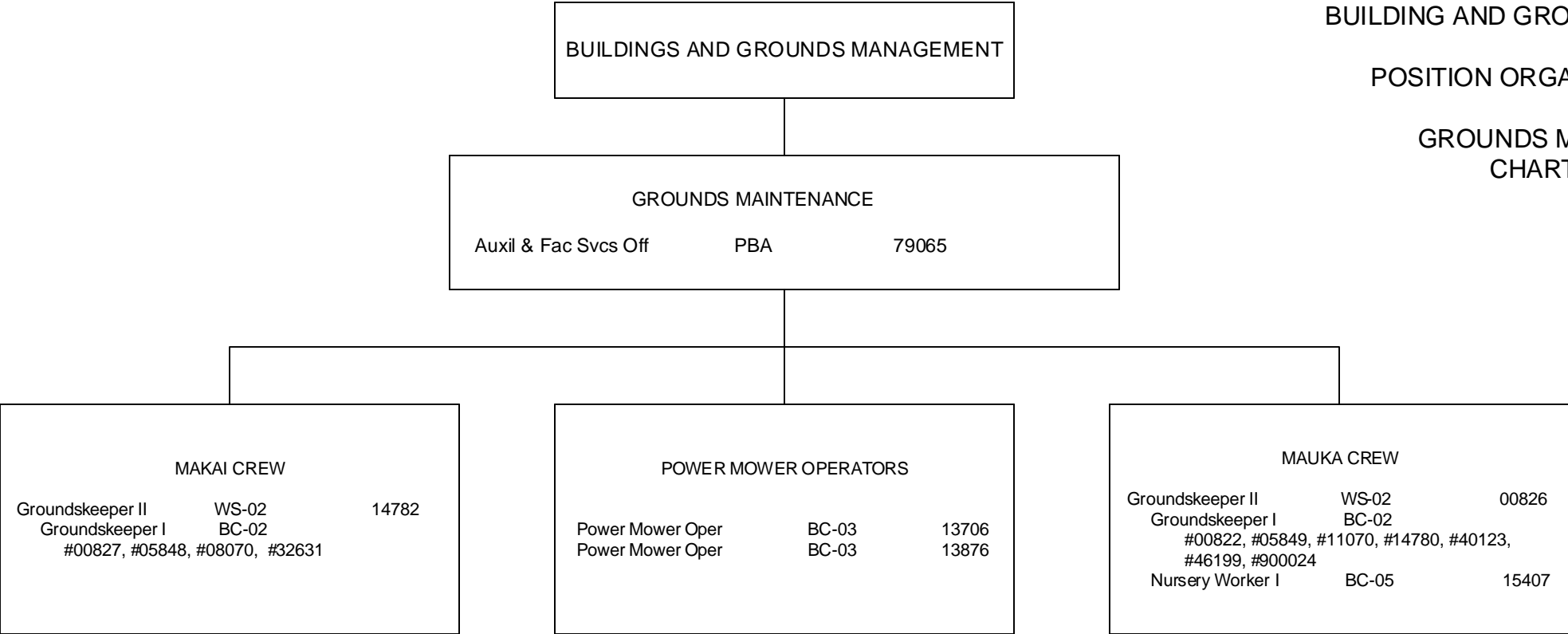


* All positions on Chart IX-A.2 appropriated to Manoa, reflected organizationally on this chart

STATE OF HAWAI'I
UNIVERSITY OF HAWAI'I
SYSTEMWIDE ADMINISTRATION
VICE PRESIDENT FOR ADMINISTRATION
OFFICE OF CAMPUS OPERATIONS & FACILITIES
BUILDING AND GROUNDS MANAGEMENT

POSITION ORGANIZATION CHART

GROUNDS MAINTENANCE
CHART VIII-A.3

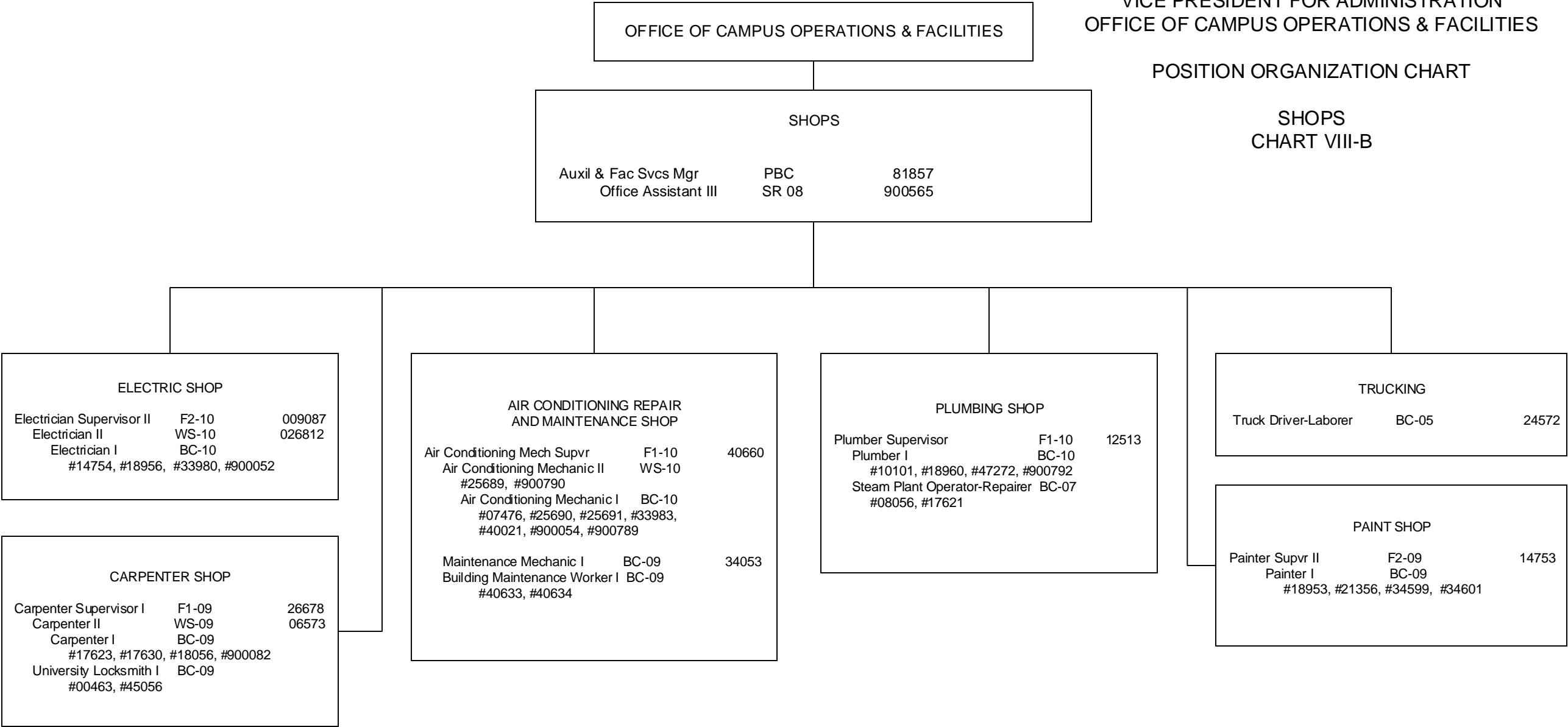


* All positions on Chart IX-A.3 appropriated to Manoa, reflected organizationally on this chart

STATE OF HAWAI'I
UNIVERSITY OF HAWAI'I
SYSTEMWIDE ADMINISTRATION
VICE PRESIDENT FOR ADMINISTRATION
OFFICE OF CAMPUS OPERATIONS & FACILITIES

POSITION ORGANIZATION CHART

SHOPS
CHART VIII-B

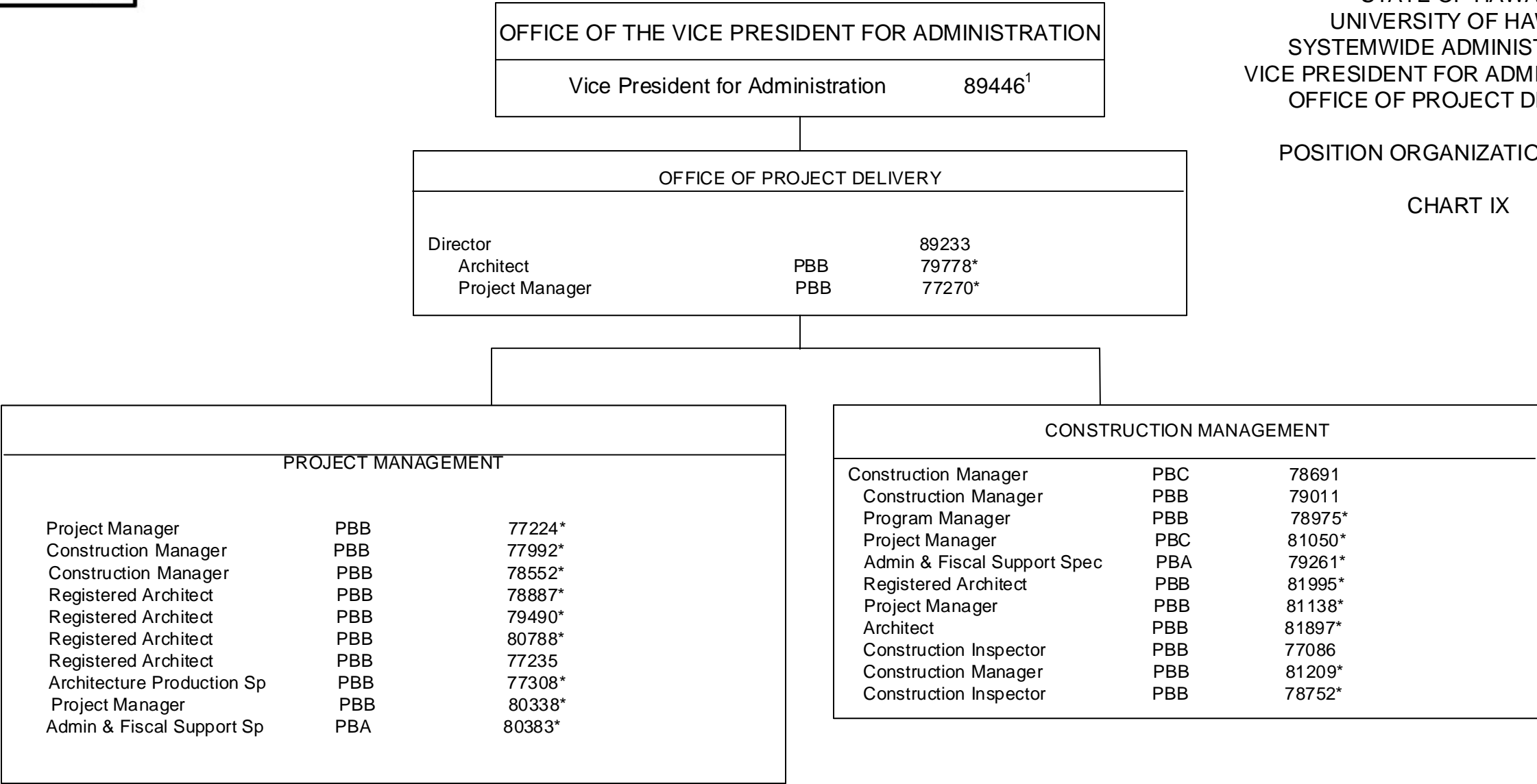


* All positions on Chart IX-B appropriated to Manoa, reflected organizationally on this chart

STATE OF HAWAI'I
UNIVERSITY OF HAWAI'I
SYSTEMWIDE ADMINISTRATION
VICE PRESIDENT FOR ADMINISTRATION
OFFICE OF PROJECT DELIVERY

POSITION ORGANIZATION CHART

CHART IX



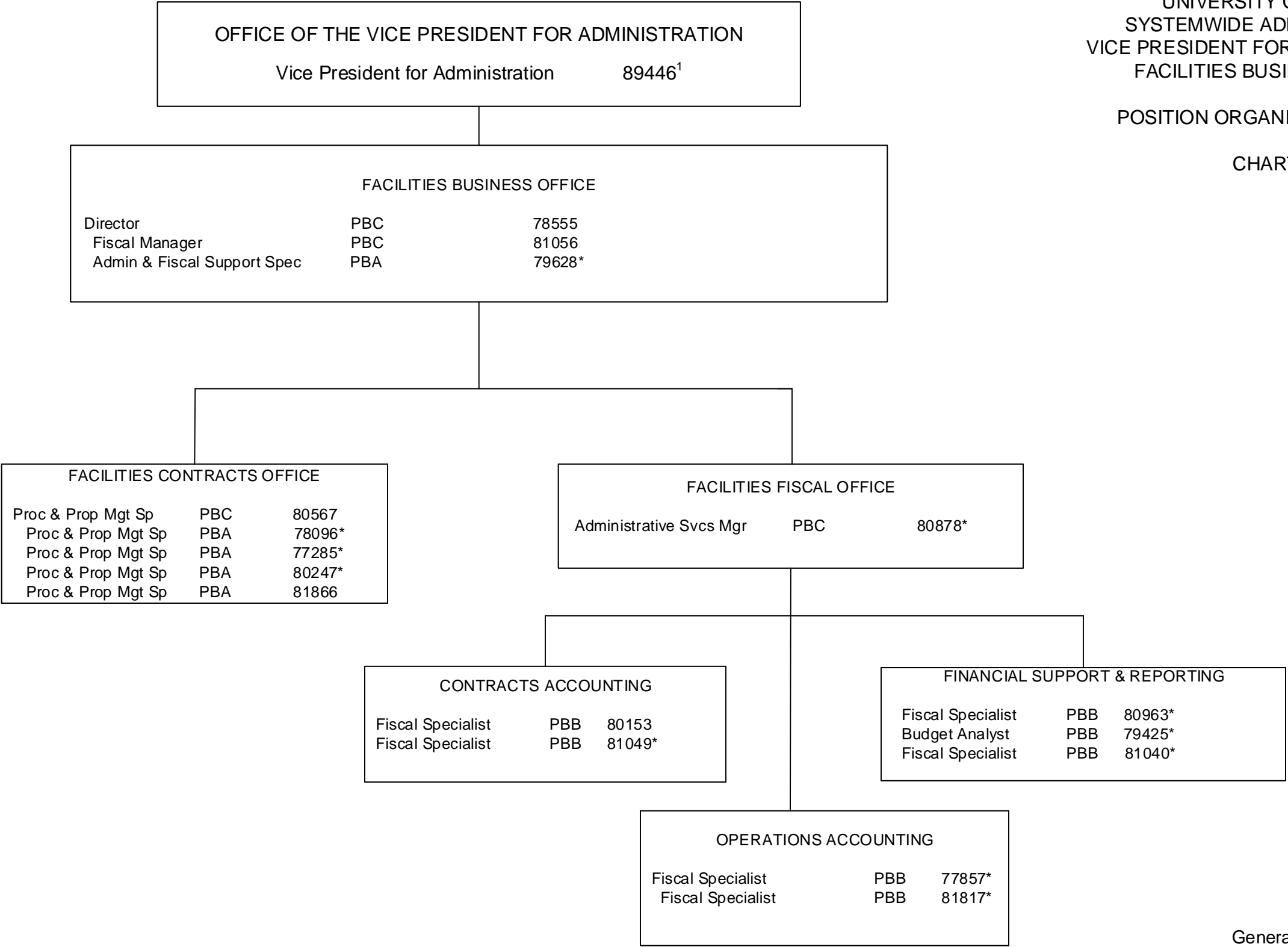
¹ Excluded from position count
* Positions appropriated to Manoa, reflected organizationally on this chart

Perm
General Fund 5.00 (SW)
General Fund 19.00 (MA)*

STATE OF HAWAI'I
UNIVERSITY OF HAWAI'I
SYSTEMWIDE ADMINISTRATION
VICE PRESIDENT FOR ADMINISTRATION
FACILITIES BUSINESS OFFICE

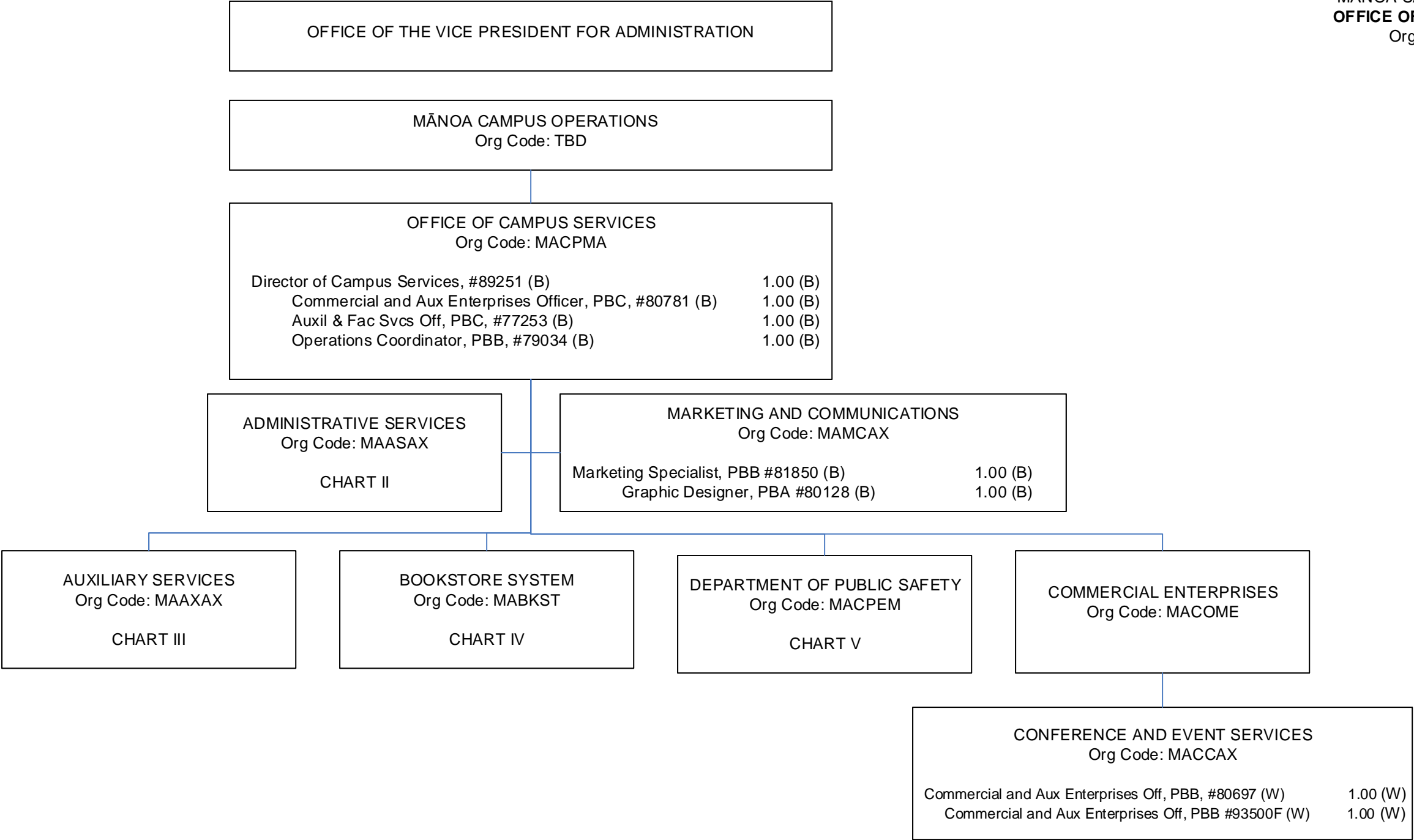
POSITION ORGANIZATION CHART

CHART X

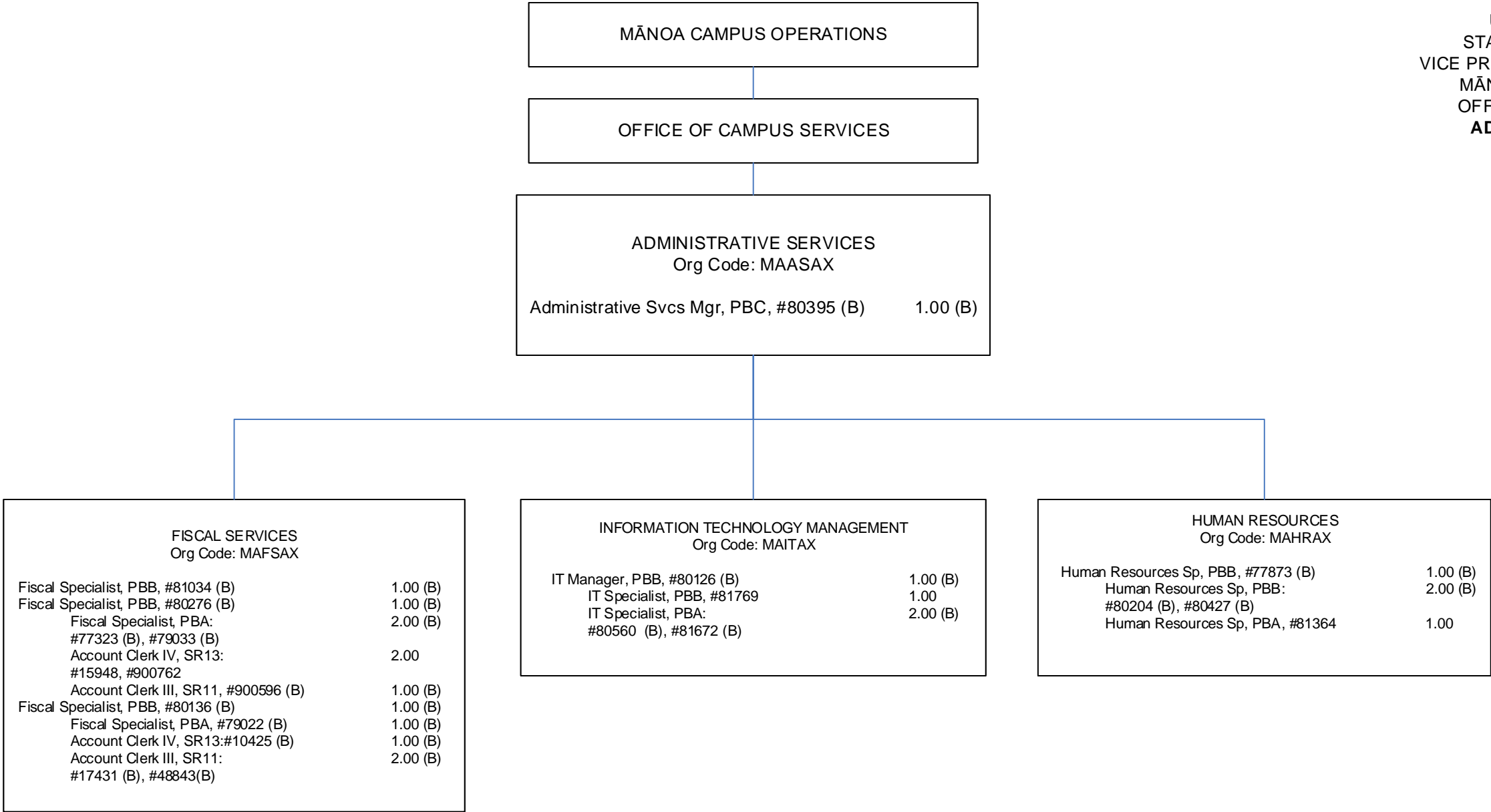


¹ Excluded from position count
* Positions appropriated to Manoa, reflected organizationally on this chart

Perm
General Fund 5.00 (SW)
General Fund 11.00 (MA)*

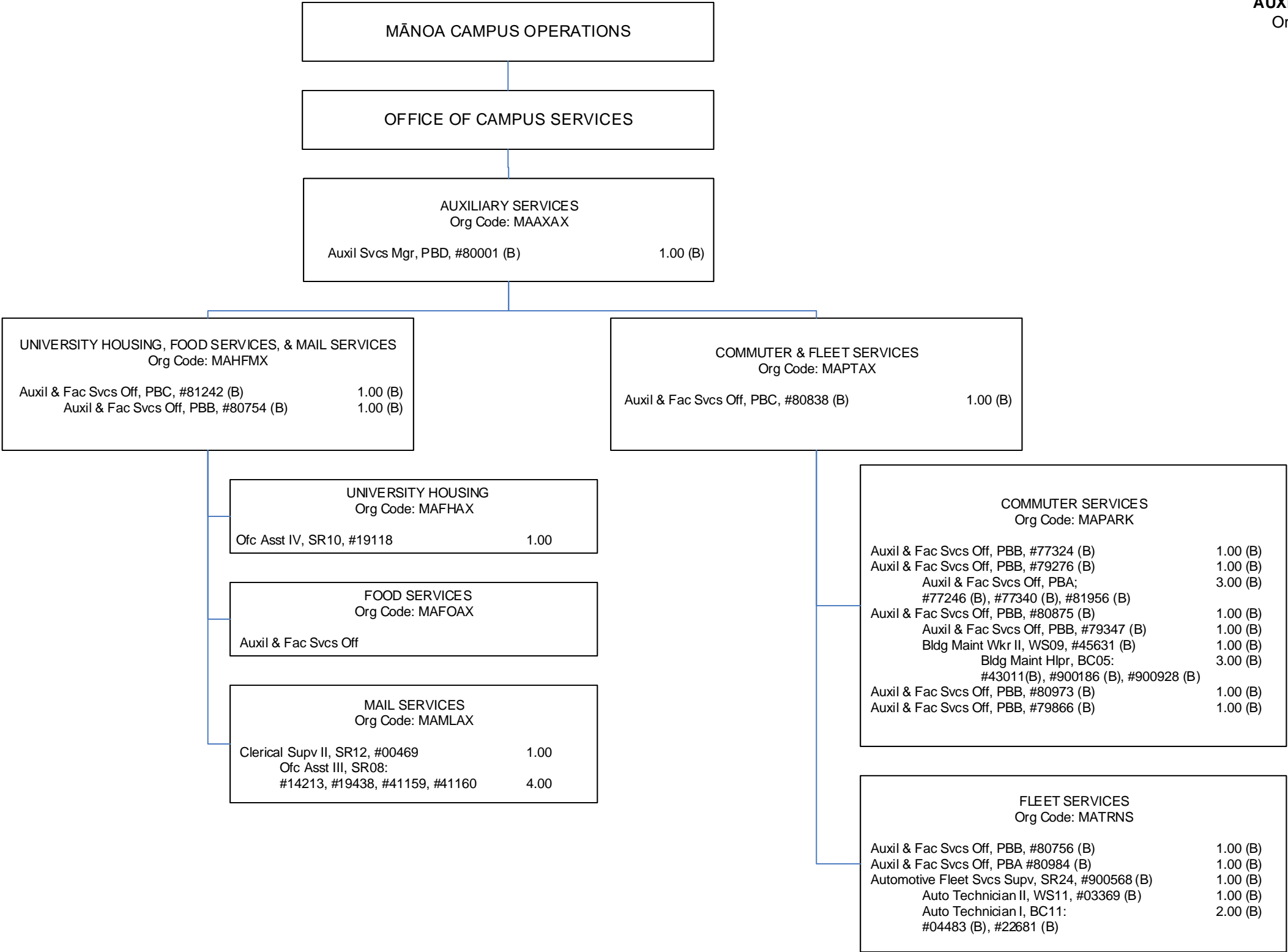


1/ To be established
(B) Special fund position abolished but retained count: #13644



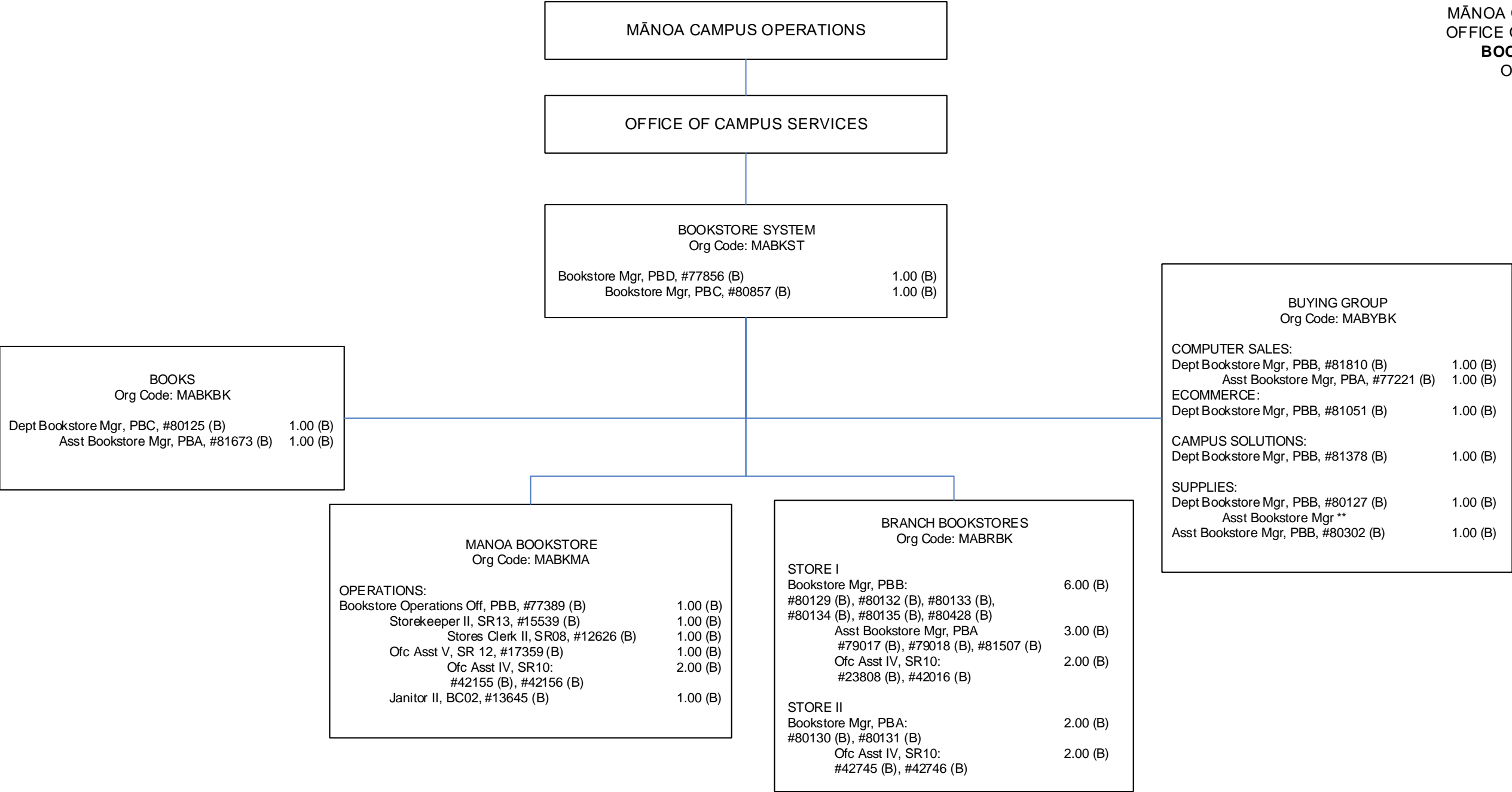
(B) Special fund positions abolished but retained position count: #14867, #14988, #900127

CHART TOTAL:	PERM	TEMP
General Funds:	4.00	--
Special Funds (B):	20.00	--



(A) General fund position abolished but retained count: #41161

CHART TOTAL:	PERM	TEMP
General Funds:	7.00	--
Special Funds (B):	23.00	--



(B) Special fund positions abolished but retained count: #06801, #12627, #13642, #13643, #13944, #13945, #15057, #15538, #17356, #17357, #17358, #17360, #17361, #17362, #17651, #18089, #19065, #19066, #22931, #23809, #24637, #24959, #26727, #27843, #27876, #27887, #32675, #35138, #47164, #94356F

**Represents a supervisory layer that exists but is deleted due to legislative abolishment

CHART TOTAL:	PERM	TEMP
General Funds:	0.00	--
Special Funds (B):	62.00	--

