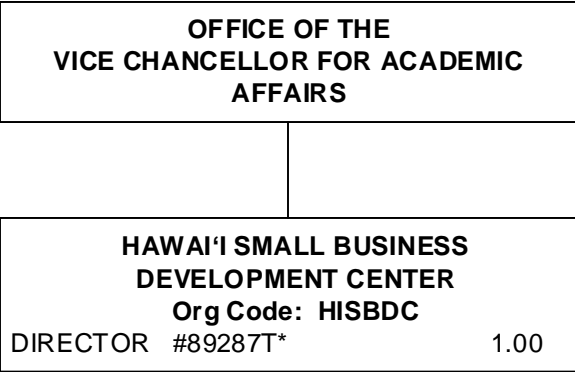
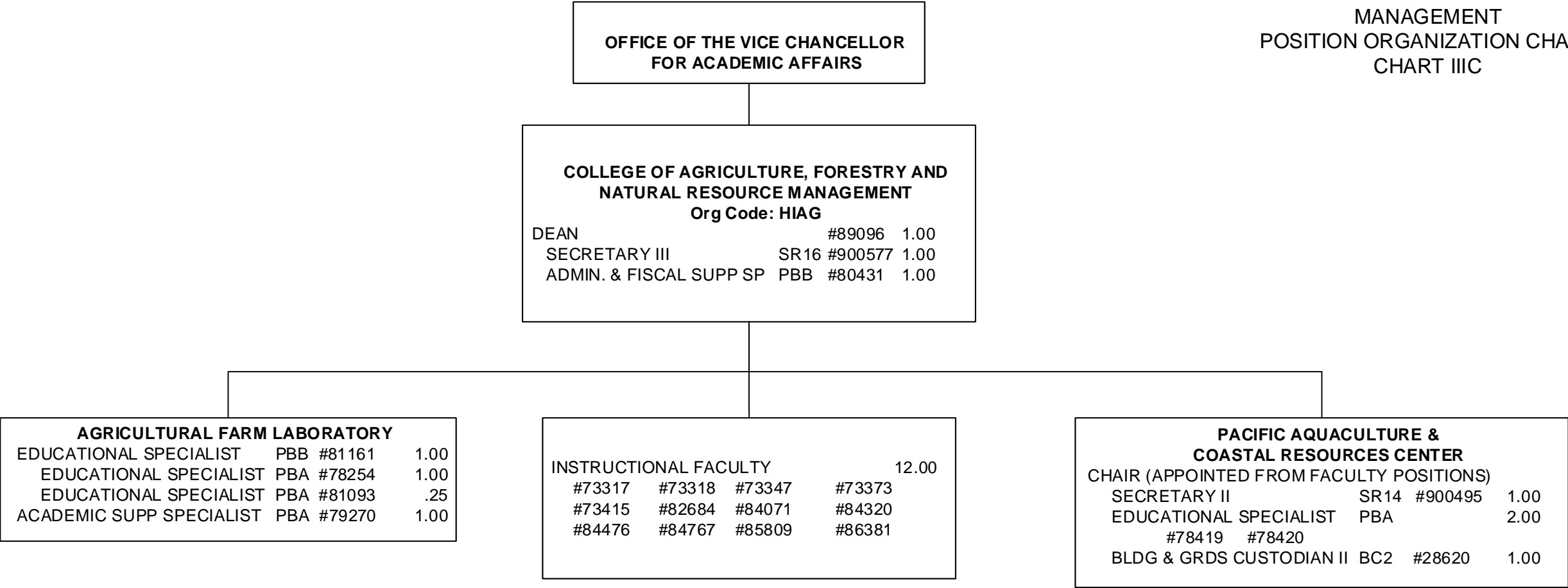
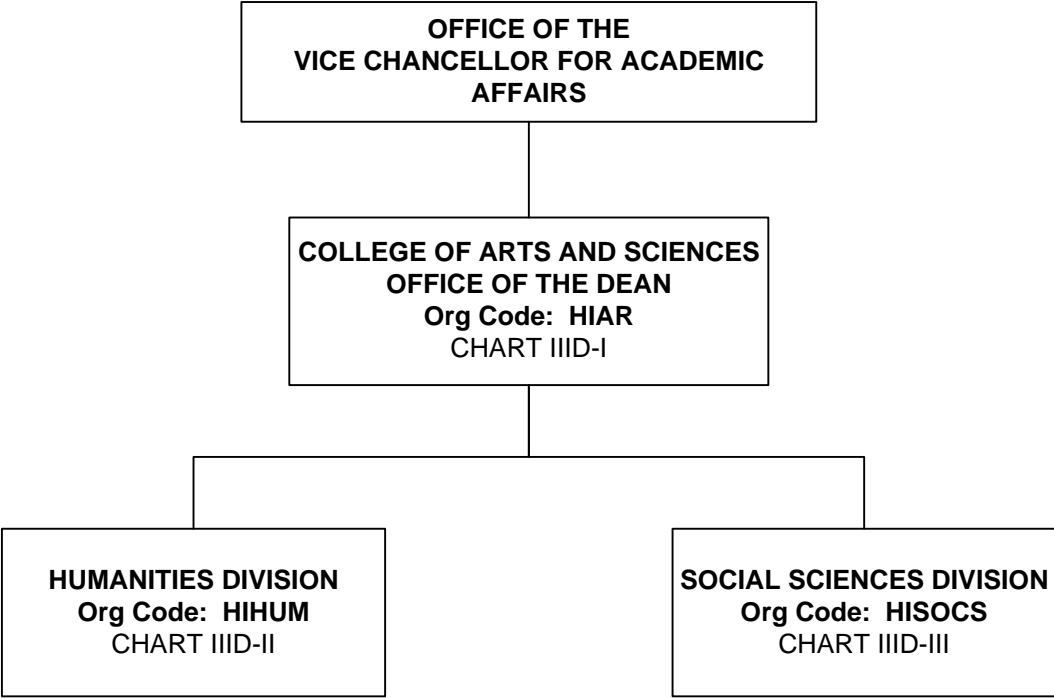


Footnote:  
OFFICE ASSISTANT IV   SR10   #110529   1.00  
(For count purposes only)



\*General Funds – 1.00 (Auth. Temp.)





OFFICE OF THE  
VICE CHANCELLOR FOR ACADEMIC  
AFFAIRS

COLLEGE OF ARTS AND SCIENCES			
Org Code: HIAR			
DEAN		#89129	1.00
SECRETARY III	SR 16	#09070	1.00
ADMIN OFFICER	PBB	#80570	1.00
ADMIN & FISCAL SUPP SP	PBA	#79741	1.00

COLLEGE OF ARTS AND SCIENCES  
OFFICE OF THE DEAN

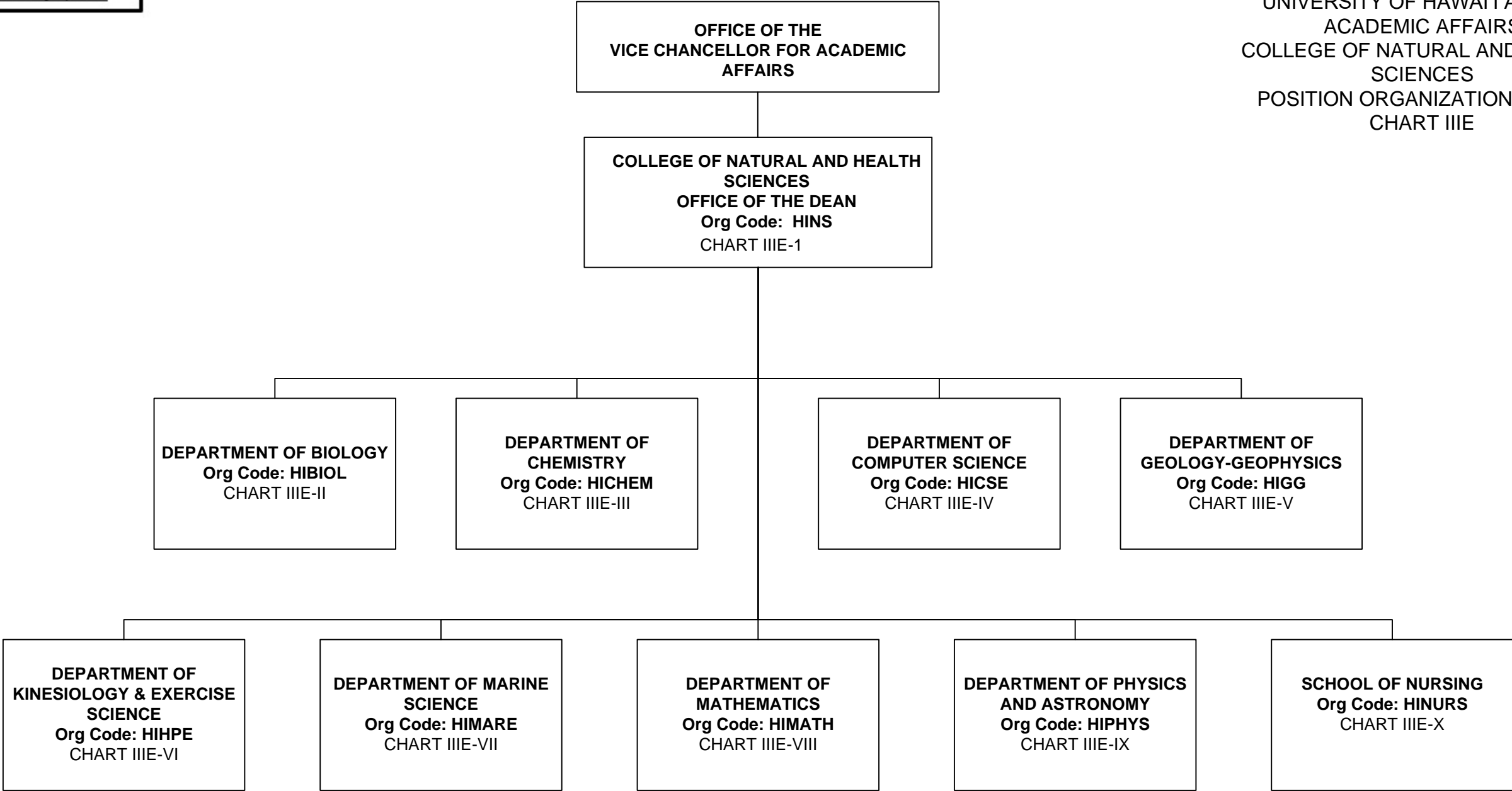
HUMANITIES DIVISION						
Org Code: HIHUM						
CHAIR (APPOINTED FROM FACULTY POSITIONS)						
SECRETARY II	SR14	#21531				1.00
ART      Org Code: HIART						
FACULTY:	#82001	#82312	#82562	#84604		4.00
ASIAN PACIFIC LANGUAGES      Org Code: HIAPL						
FACULTY:	#73407	#82832	#83971	#84038	#86365	5.00
COMMUNICATION      Org Code: HICOM						
FACULTY:	#73256	#73343(S)	#83107	#83158	#83655	8.00
	#83784	#86411	#86462T			
ENGLISH      Org Code: HIENG						
FACULTY:	#73344(S)	#73450T	#82171	#82553	#82563	12.00
	#83928	#84198	#84267	#86463T	#86540	
EUROPEAN LANGUAGES FACULTY      Org code: HIEL						
FACULTY:	#73298	#73346				2.00
PERFORMING ARTS      Org Code: HIMUS						
FACULTY:	#82775	#84213	#84511			3.00
PHILOSOPHY      Org Code: HIPHIL						
FACULTY:	#73368(S)	#82478	#82654	#84509		4.00

COLLEGE OF ARTS AND SCIENCES  
OFFICE OF THE DEAN

SOCIAL SCIENCES DIVISION						
Org Code: HISOCS						
CHAIR (APPOINTED FROM FACULTY POSITIONS)						
ADMIN. & FISCAL SUPP SP	PBA	#96520				1.00
ANTHROPOLOGY      Org Code: HIANTH						
FACULTY: #73345(S)	#73372	#82214	#82557	#83005	#86481	8.00
	#86488	#99616F(S)@				
SCHOOL OF EDUCATION      Org Code: HIED						
OFFICE ASSISTANT IV	SR10		#42269+			1.00
FACULTY: #73301	#73464	#82179	#83049	#83596	#83791	8.00
	#84855	#86541				
GEOGRAPHY      Org Code: HIGEOG						
FACULTY: #82899	#83555	#84766	#86404	#86414		5.00
HISTORY      Org Code: HIHIST						
FACULTY: #82009	#82577	#84285	#84483	#86360		5.00
POLITICAL SCIENCE      Org Code: HIPOLS						
FACULTY: #82309	#82352	#82821	#83186	#86445	#86450	6.00
PSYCHOLOGY      Org Code: HIPSY						
FACULTY: #73254	#73362	#82349	#82542	#82847	#82933	11.00
	#83929	#83981	#86362	#86413	#86417	
SOCIOLOGY      Org Code: HISOC						
FACULTY: #73352	#82169	#82303	#84593	#86370		5.00

@ Pending Establishment  
+ Reports to Department Chair





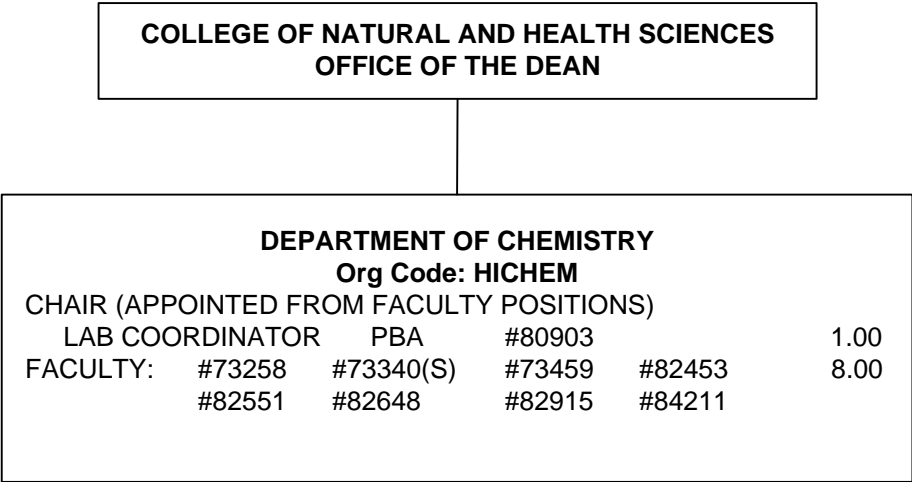
OFFICE OF THE  
VICE CHANCELLOR FOR ACADEMIC  
AFFAIRS

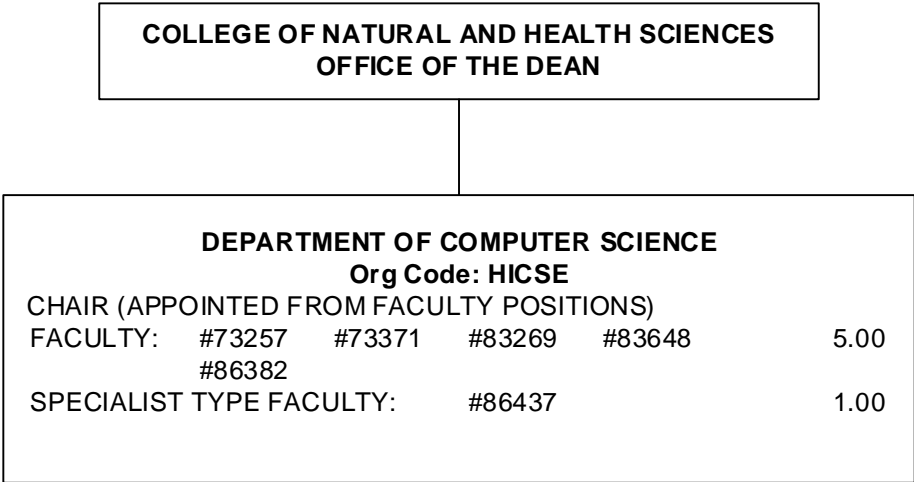
COLLEGE OF NATURAL AND HEALTH SCIENCES					
Org Code: HINS					
DEAN			#89472	1.00	
SECRETARY III	SR16		#18550	1.00	
OFFICE ASSISTANT III	SR8		#28622	1.00	
ADMIN OFFICER	PBB		#78802	1.00	
ACAD SUPP SPECIALIST	PBA		#78230	1.00	

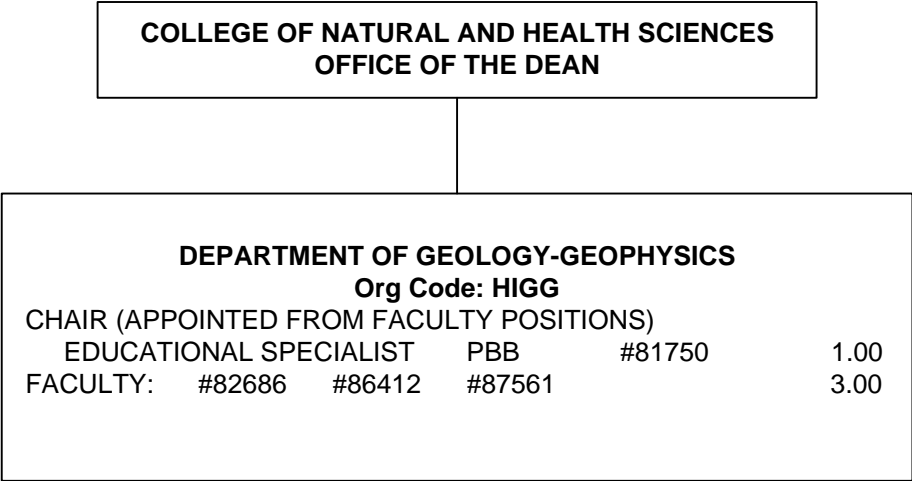
COLLEGE OF NATURAL AND HEALTH SCIENCES  
OFFICE OF THE DEAN

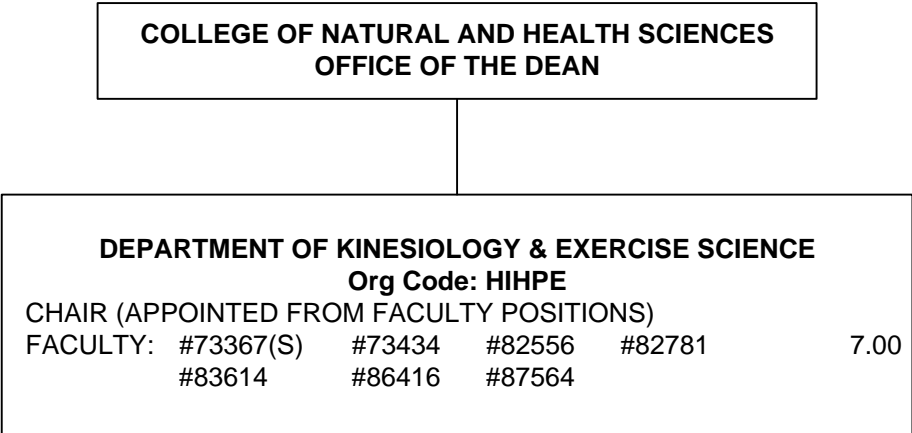
DEPARTMENT OF BIOLOGY					
Org Code: HPSY					
CHAIR (APPOINTED FROM FACULTY POSITIONS)					
SECRETARY II SR14		#22484			1.00
LAB COORDINATOR PBB		#80902			1.00
FACULTY:	#73299	#73342(S)	#73363	#73404(S)	14.00
	#73435	#82322	#82643	#82909	
	#83122	#83380	#83424	#83631	
	#86408	#99622F(S)	@		

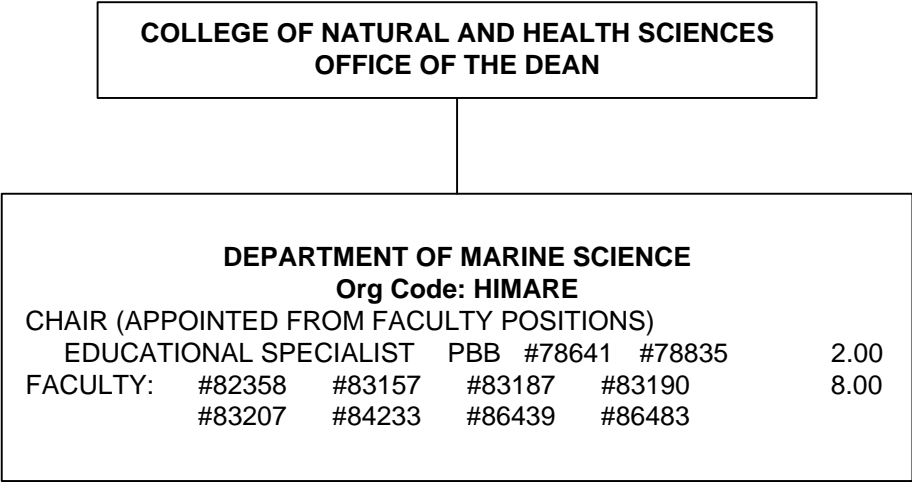
@ Pending Establishment







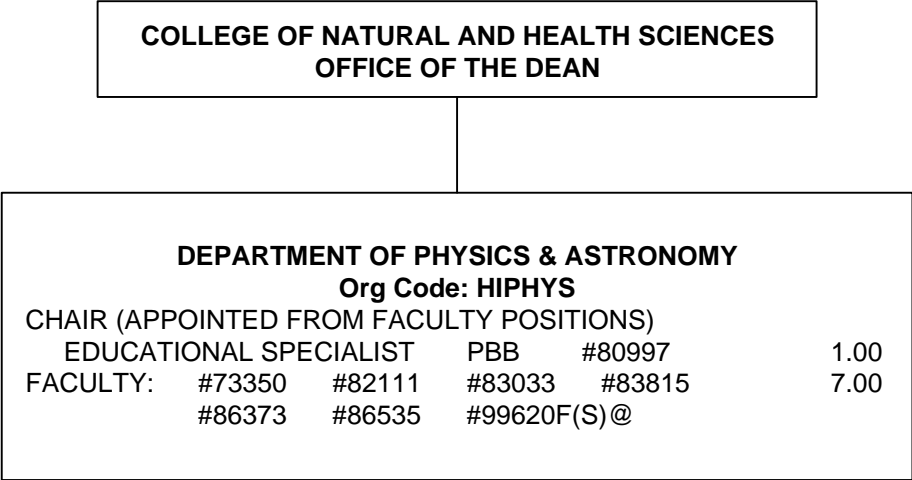




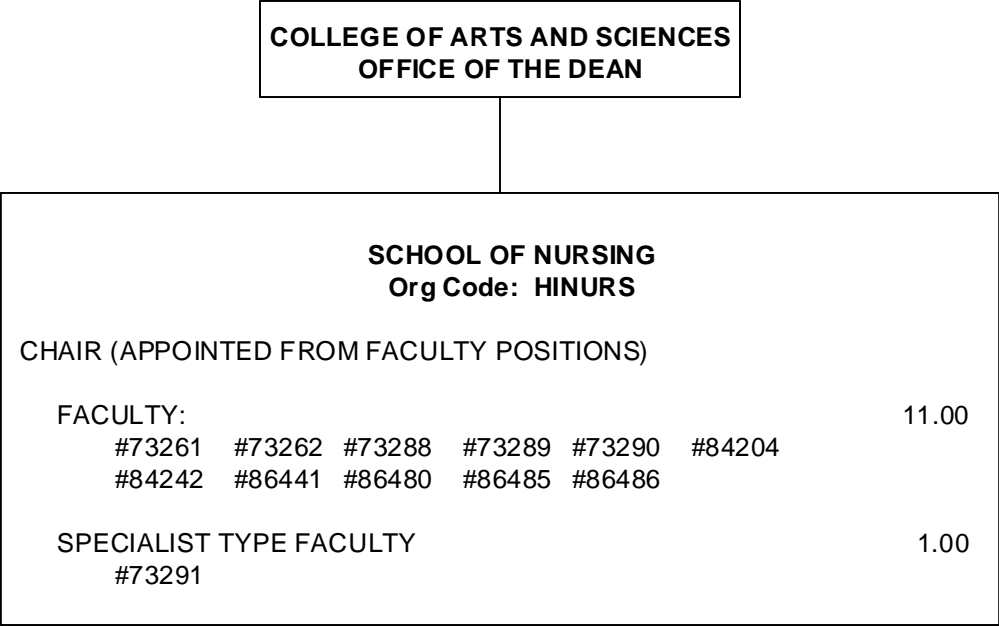


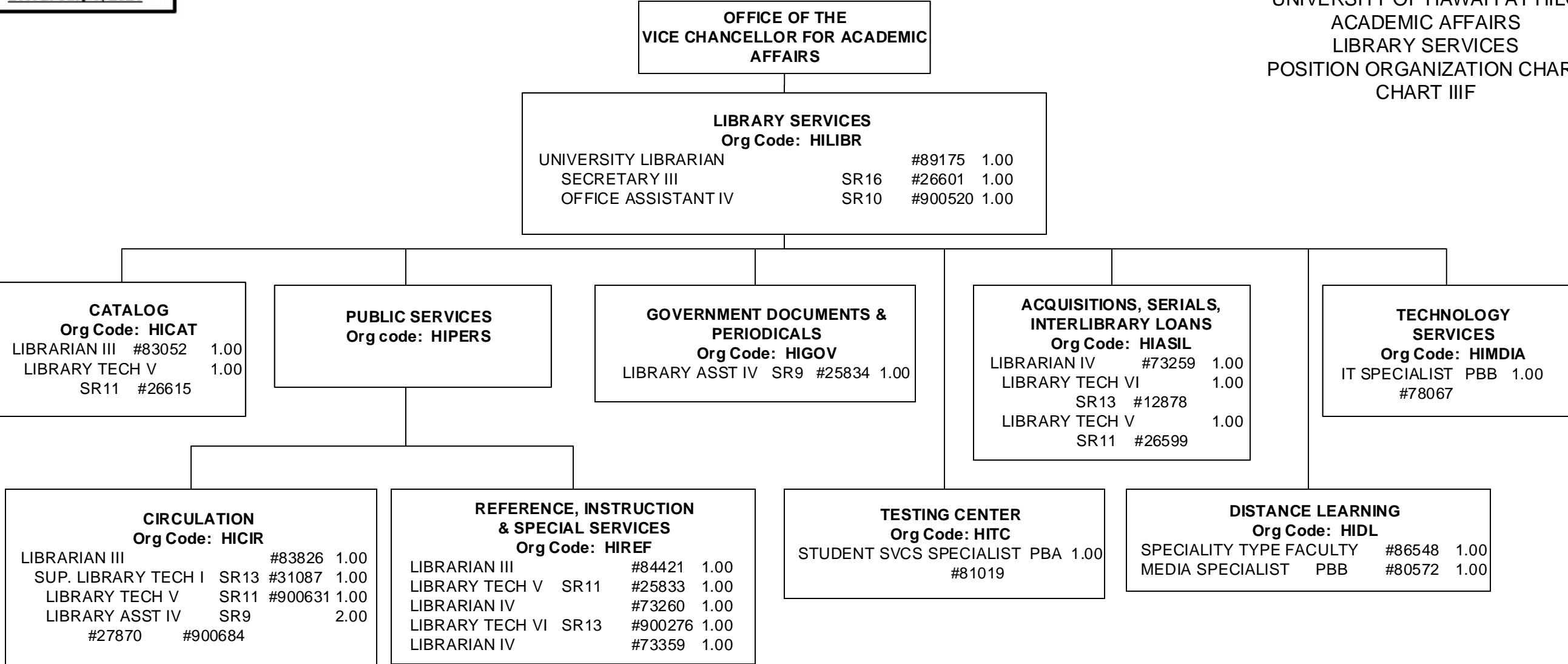
COLLEGE OF NATURAL AND HEALTH SCIENCES  
OFFICE OF THE DEAN

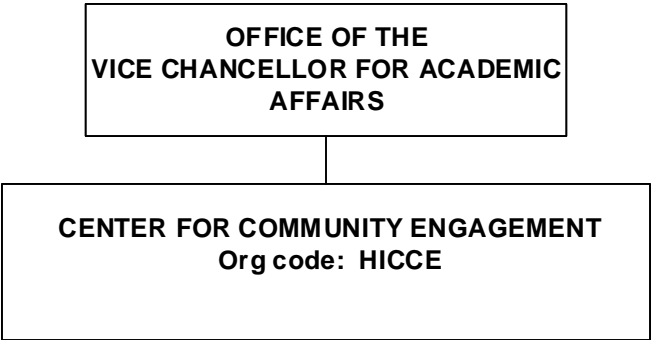
DEPARTMENT OF MATHEMATICS					
Org Code: HIMATH					
CHAIR (APPOINTED FROM FACULTY POSITIONS)					
FACULTY:	#73255	#73341(S)	#73461	#73462	12.00
	#82381	#82801	#83503	#84063	
	#84068	#86361	#86366	#86482	



@ Pending Establishment

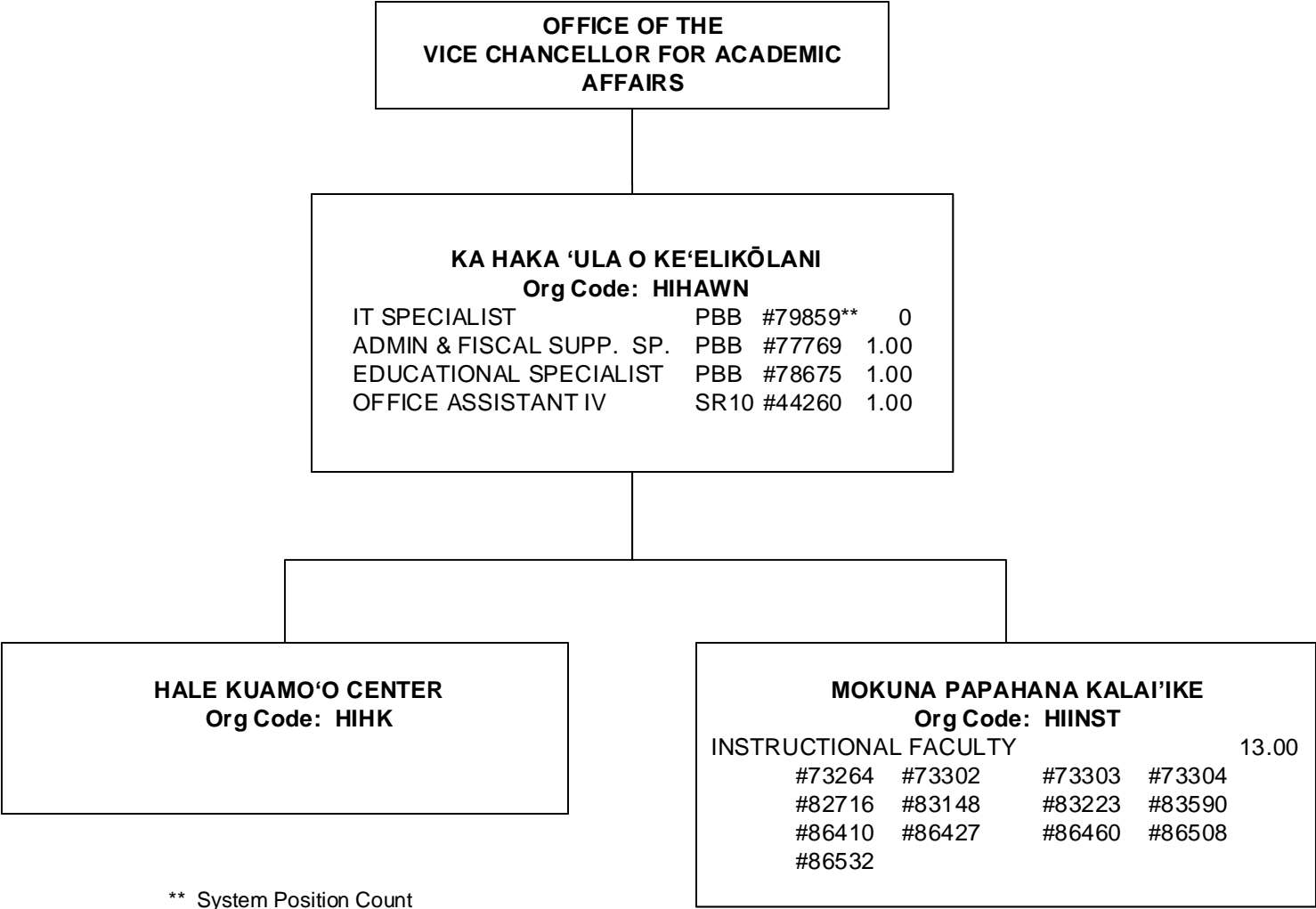


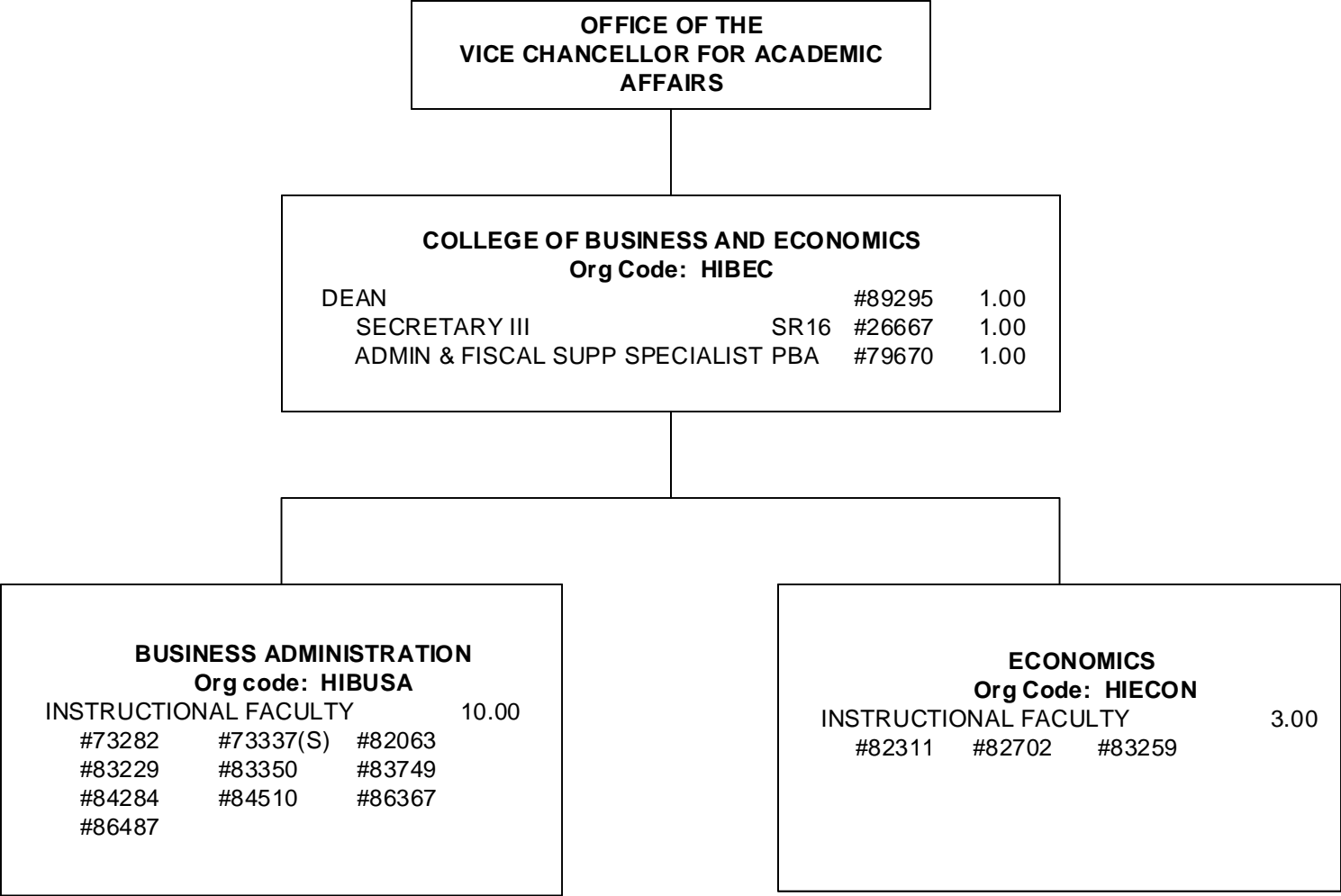




Footnote:

EDUCATIONAL SPECIALIST PBB	#78668(S)	1.00
SECRETARY II SR14	#25886(S)	1.00
SPECIALIST TYPE FACULTY	#86473(S)	1.00
(For count purposes only)		

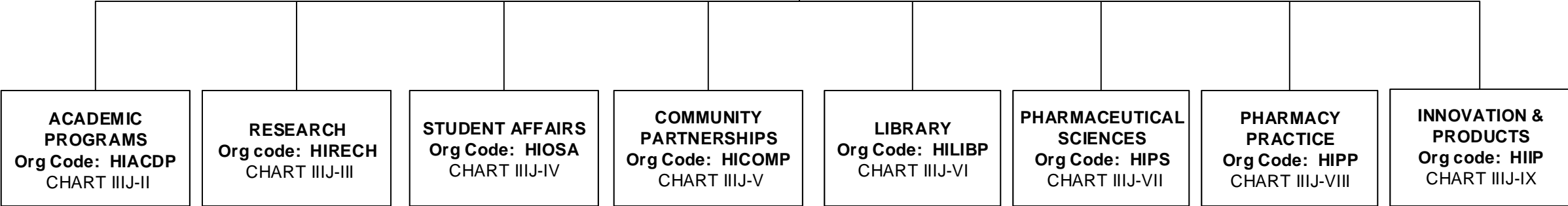




Footnote:  
OFFICE ASSISTANT III SR8 #45475 1.00  
(For count purposes only)

OFFICE OF THE VICE CHANCELLOR  
FOR ACADEMIC AFFAIRS

COLLEGE OF PHARMACY  
OFFICE OF THE DEAN  
Org Code: HIPHAR  
CHART IIIJ-I

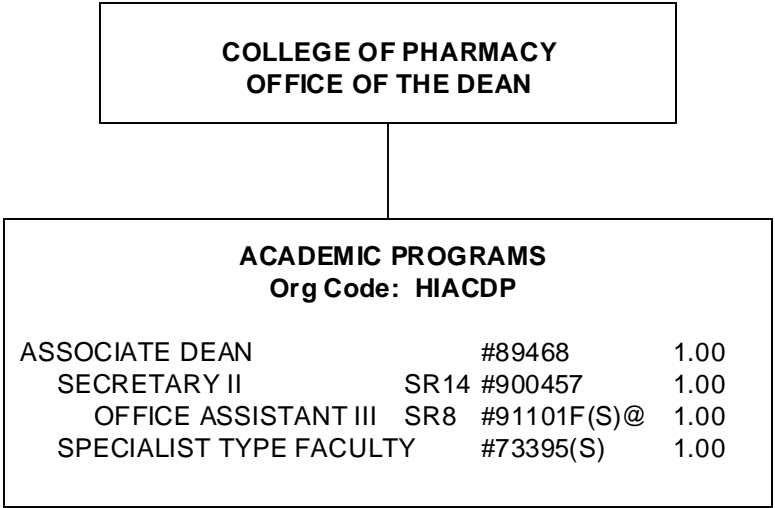




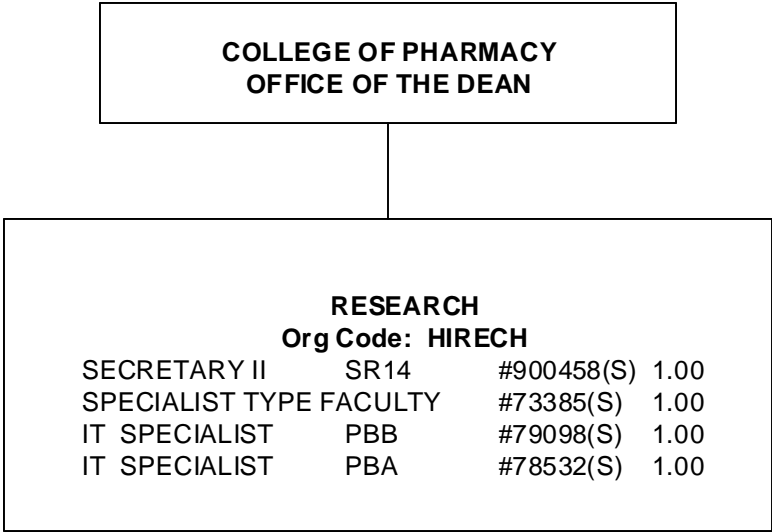
OFFICE OF THE VICE CHANCELLOR FOR  
ACADEMIC AFFAIRS

COLLEGE OF PHARMACY				
Org Code: HIPHAR				
DEAN		#89428		1.00
SECRETARY III	SR16	#900293		1.00
OFFICE ASSISTANT III	SR8	#900634(S)		1.00
HUMAN RESOURCES SP	PBB	#79785(S)		1.00
BUDGET MANAGER	PBB	#78533(S)		1.00
ADMIN & FISCAL SUPP SP	PBA			2.00
	#77608(S)	#79128(S)		
IT SPECIALIST	PBA	#79234(S)		1.00
SPECIALIST TYPE FACULTY		#73427		1.00

Footnote:  
OFFICE ASSISTANT III    SR8    #900525(S)    1.00  
(For count purposes only)



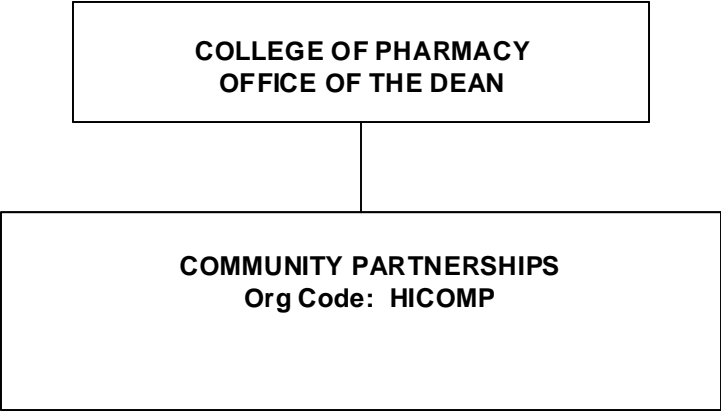
@ Pending Establishment

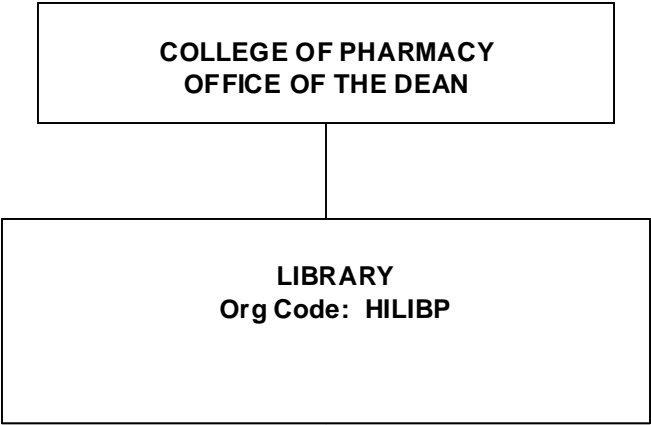


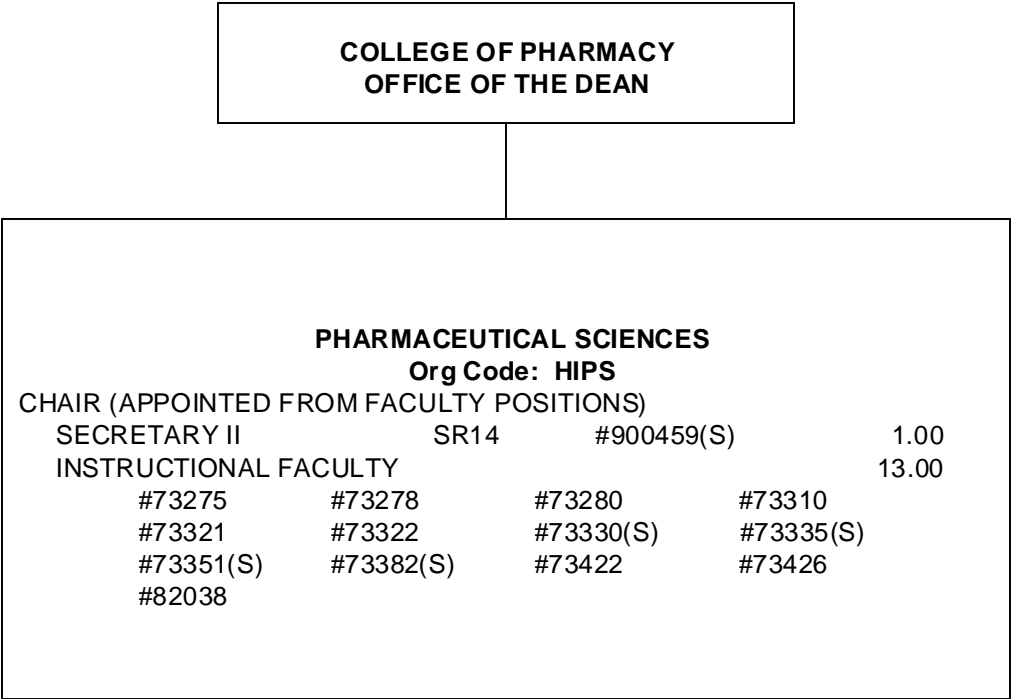
COLLEGE OF PHARMACY  
OFFICE OF THE DEAN

STUDENT AFFAIRS  
Org code: HIOSA

STUDENT SERVICES SPECIALIST	PBB #77435(S)	1.00
STUDENT SERVICES SPECIALIST	PBB #78531(S)	1.00
ACADEMIC SUPPORT SPECIALIST	PBB #79356(S)	1.00
STUDENT SERVICES SPECIALIST	PBA #79256(S)	1.00







Footnote:  
OFFICE ASSISTANT III SR8 #900633(S) 1.00  
(For count purposes only)

