

OFFICE OF THE PRESIDENT

OFFICE OF THE PROVOST

COLLEGE OF ARTS, LANGUAGES & LETTERS

OFFICE OF THE DEAN

Org Code: TBD

STATE OF HAWAI'I

UNIVERSITY OF HAWAI'I

UNIVERSITY OF HAWAI'I AT MĀNOA

OFFICE OF THE PROVOST

COLLEGE OF ARTS, LANGUAGES & LETTERS

Organization Chart

Chart I

DEPARTMENT TOTAL:	PERM	TEMP
General Funds:	415.75	19.00
Special Funds:	1.00	--

Dean, #89198	1.00
Secretary III, SR-16, #35033*	1.00
Associate Dean, #89023	1.00
Secretary III, SR-16, #35527	1.00
Academic Support, PBB (pending establishment)	
Associate Dean, #89260	1.00
Secretary III, SR-16, #21643	1.00
IT Specialist, PBB, #79386	1.00
IT Specialist, PBA, #81388	1.00
Info, Events & Publications, PBB (pending establishment)	
Program Specialist, PBB, #80485	1.00

STUDENT ACADEMIC SERVICES

Org Code:MACLAD

Director (appointed from faculty)

Secretary II, SR-14, #44055	1.00
Admin & Fiscal Support Specialist, PBA, #77514	1.00
Academic Advisor, PBB, #80719	1.00

Specialist Type Faculty:

#70060, #83818, #84379	3.00
------------------------	------

ADMINISTRATIVE SERVICES

Org Code: TBD

Admin Svcs Mgr, PBC, #80209

Admin Officer, PBB, #81871	1.00
Admin Svcs Mgr, PBC, #80828	1.00
Admin Officer, PBB:	3.00
#78625, #80498, #81228,	
Admin & Fiscal Supp Spec, PBB, #77715	1.00
Admin Officer, Senior, PBB, #81560*	1.00
HR Spec, PBB, #78313, #81110	2.00
HR Spec, PBA, #79811	1.00
HR Assistant IV, SR-11, #44609	1.00

INSTRUCTIONAL UNITS

Org Code: TBD

CHART II

Academy for Creative Media

Department of American Studies

Department of Art & Art History

Department of Asian Studies

Department of Communicology

Department of East Asian Languages & Literatures

Department of English

Department of History

Department of Indo-Pacific Languages & Literatures

Department of Languages & Literatures of Europe & the Americas

Department of Linguistics

Department of Music

Department of Pacific Islands Studies

Department of Philosophy

Department of Religion

Department of Second Language Studies

Department of Theatre & Dance

SCHOOL OF PACIFIC & ASIAN STUDIES

Org Code: MACPAS

CHART III

Center for Chinese Studies

Center for Japanese Studies

Center for Korean Studies

Center for Okinawan Studies

Center for Pacific Islands Studies

Center for Philippine Studies

Center for South Asian Studies

Center for Southeast Asian Studies

CENTERS

Org Code: TBD

CHART IV

Center for the Arts

Center for Biographical Research

Center for Interpretation & Translation Studies

Center for Language & Technology

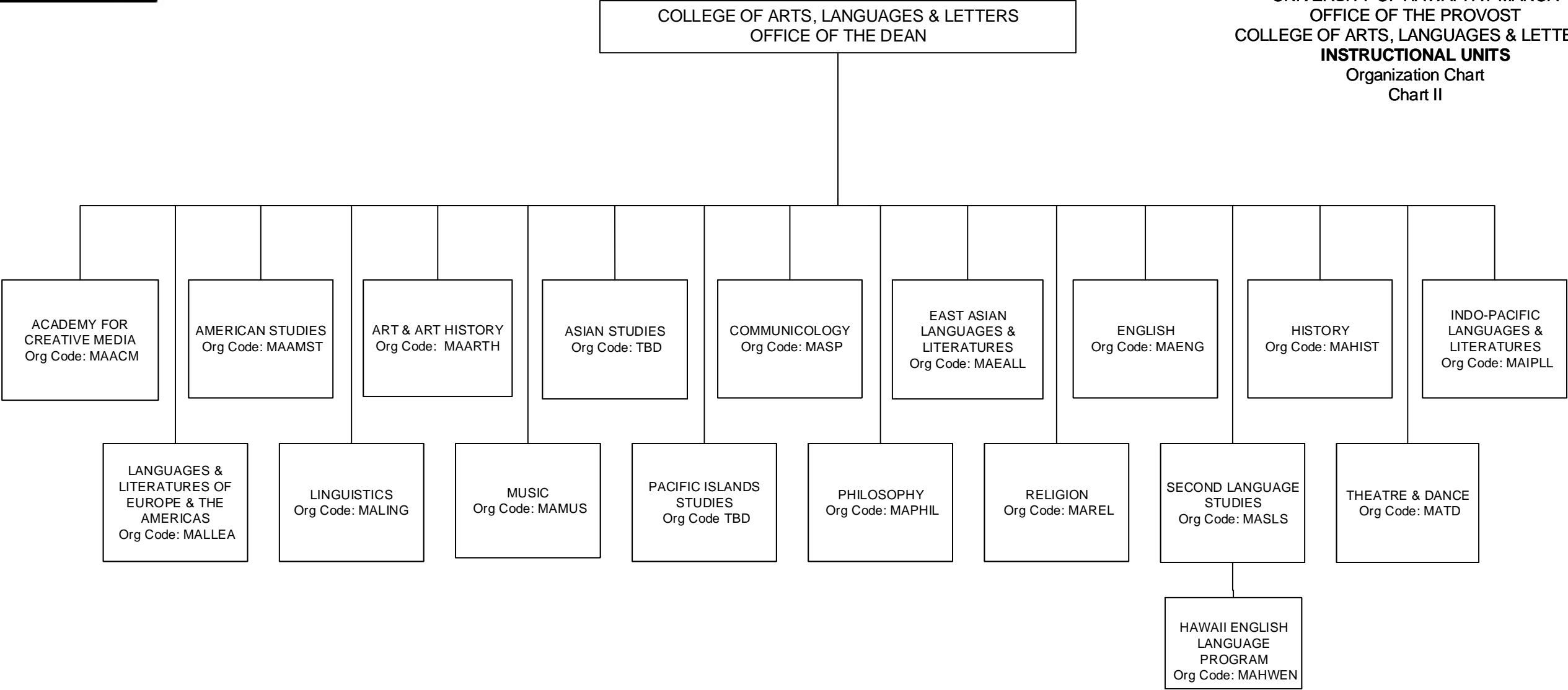
Center for the Study of Human Language

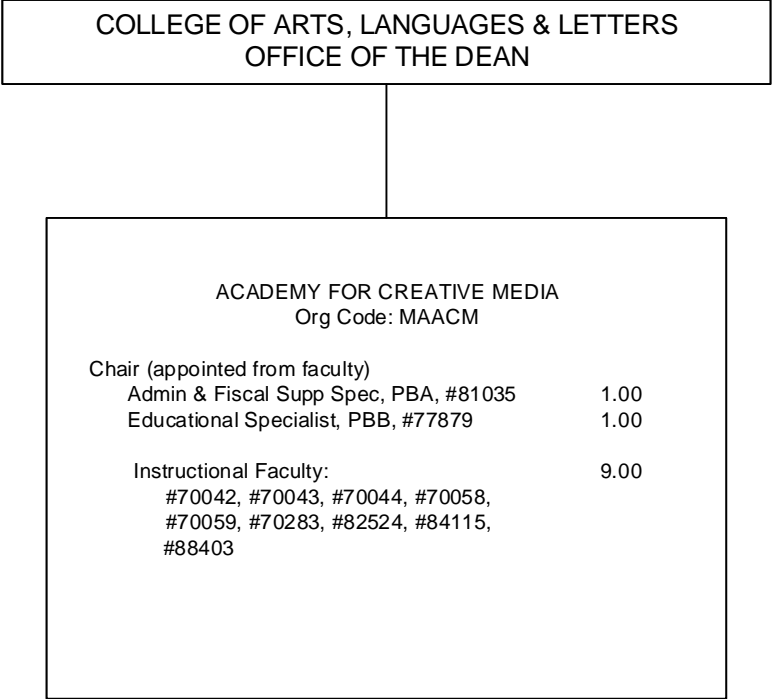
Mānoa Center for the Humanities & Civic Engagement

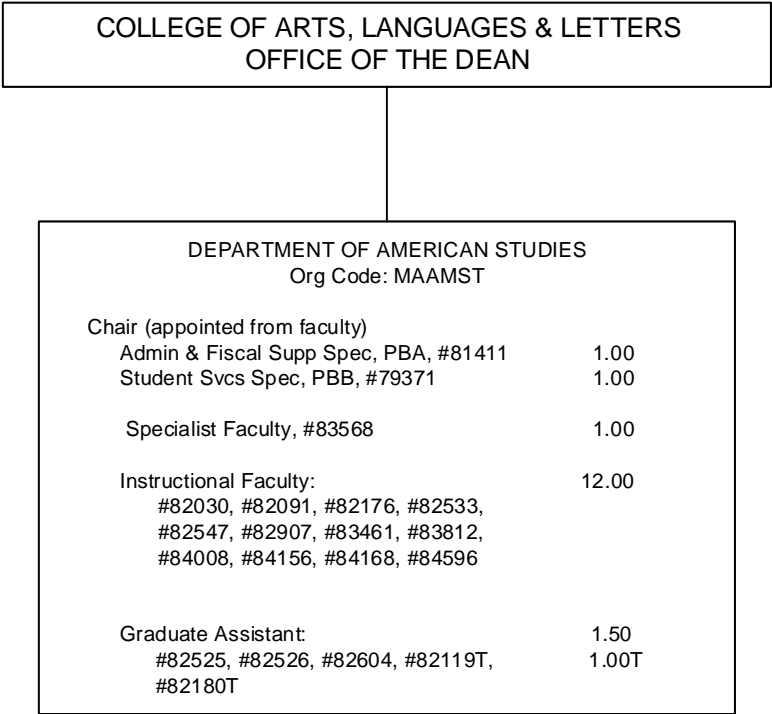
Uehiro Academy for Philosophy and Ethics in Education

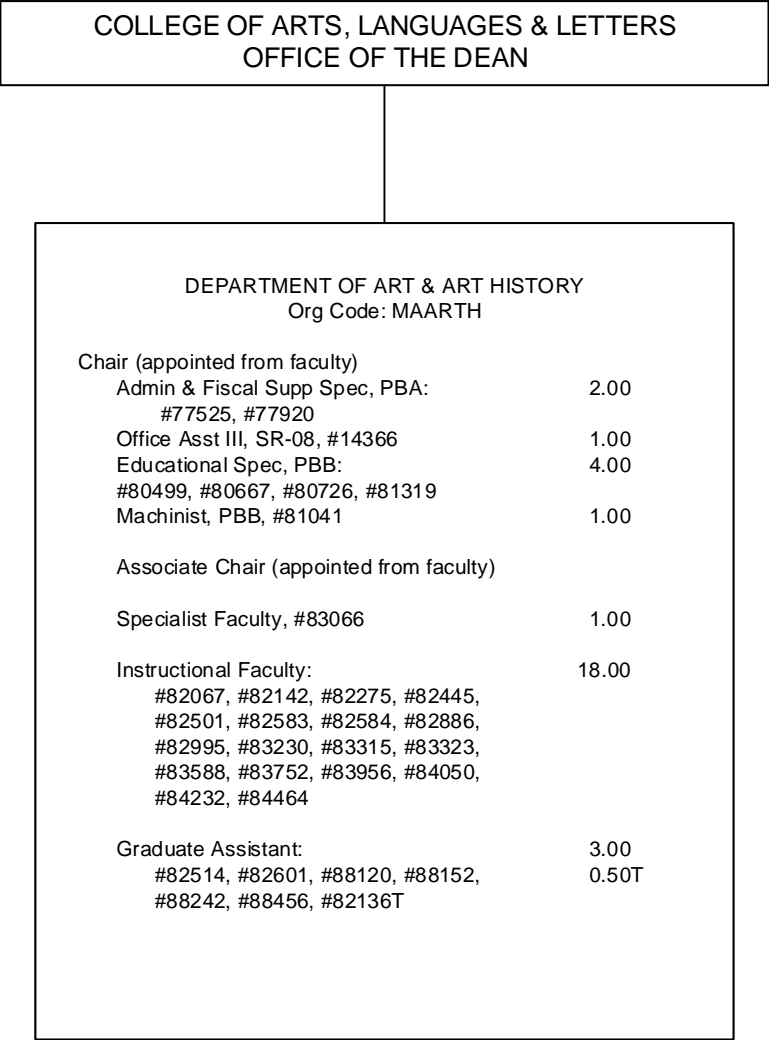
\* Pending redescription

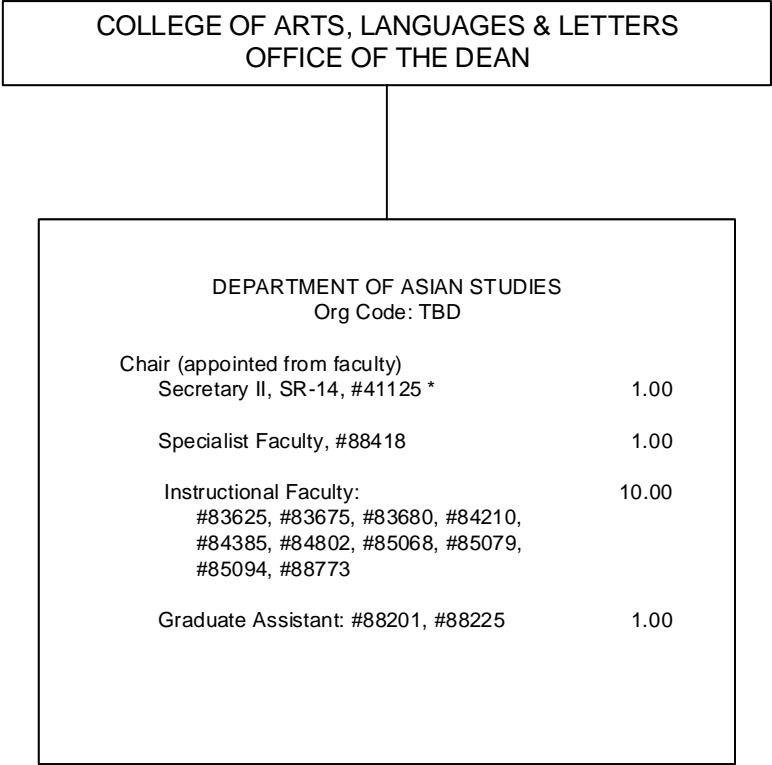
CHART TOTAL:	PERM	TEMP
General Funds:	27.00	--

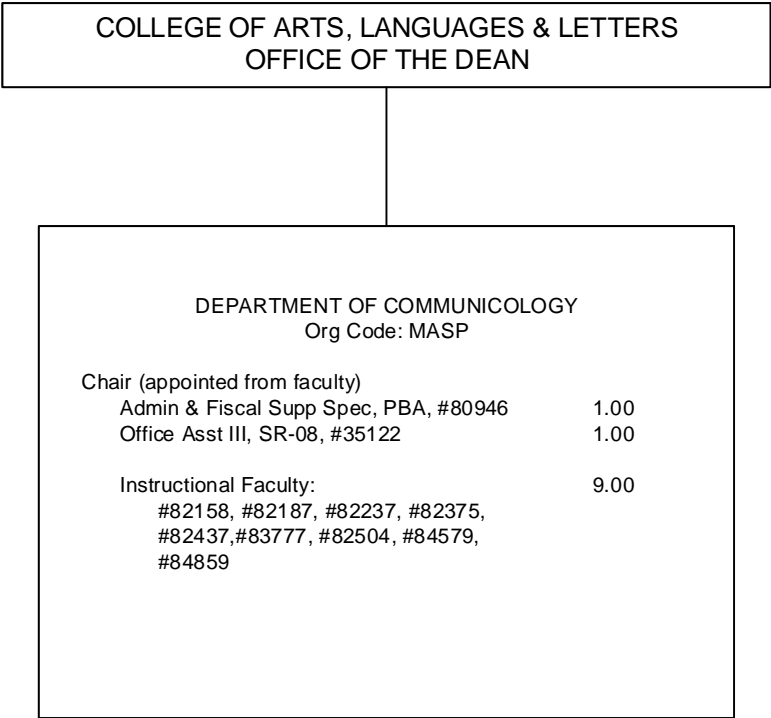


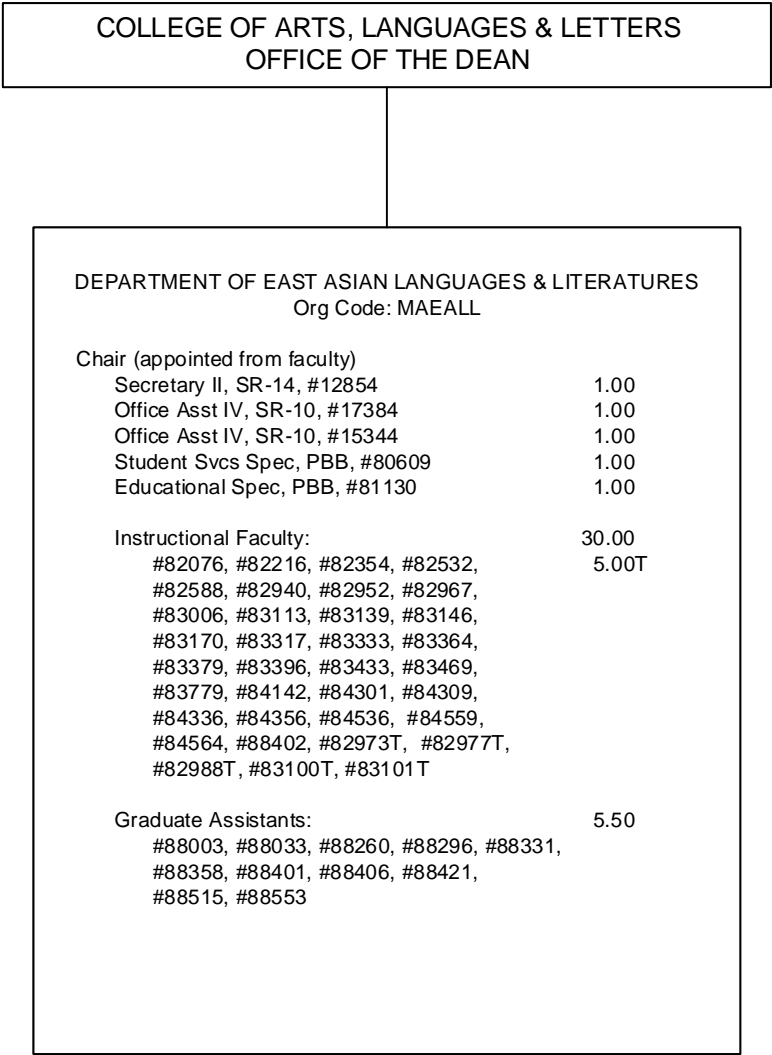














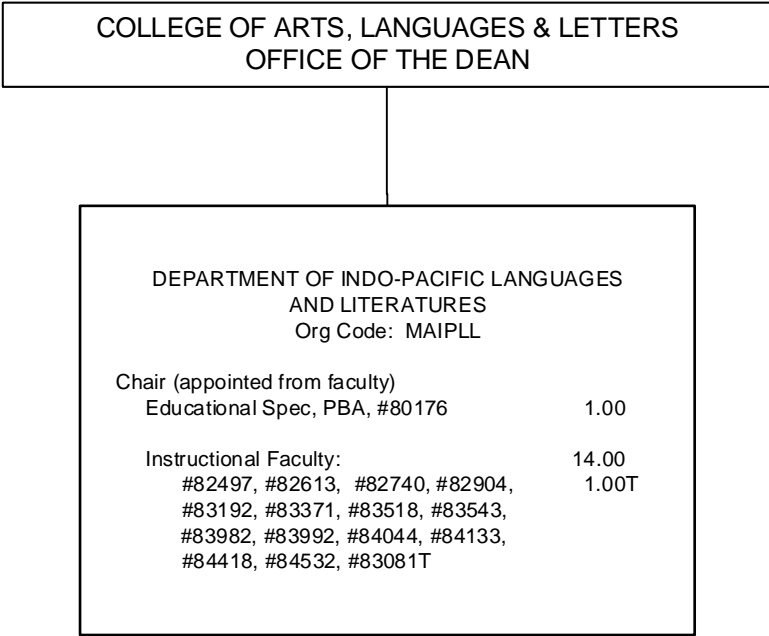
COLLEGE OF ARTS, LANGUAGES & LETTERS  
OFFICE OF THE DEAN

STATE OF HAWAI'I  
UNIVERSITY OF HAWAI'I  
UNIVERSITY OF HAWAI'I AT MĀNOA  
OFFICE OF THE PROVOST  
COLLEGE OF ARTS, LANGUAGES & LETTERS  
DEPARTMENT OF ENGLISH  
Organization Chart  
Chart II-G

DEPARTMENT OF ENGLISH Org Code: MAENG		
Chair (appointed from faculty)		
Secretary II, SR-14, #11175	1.00	
Office Asst IV, SR-10, #14367	1.00	
Associate Chair (appointed from faculty)		
Educational Spec, PBB, #79171	1.00	
Instructional Faculty:		
#82046, #82055, #82098, #82104, #82560, #82673, #82841, #82974, #83089, #83193, #83234, #83266, #83272, #83296, #83480, #83489, #83561, #83572, #83595, #83751, #83760, #83913, #83918, #84239, #84244, #84264, #84397, #84520, #84560, #84820, #88222, #88573, #88605	33.00	
Graduate Assistant:		
#83231, #83476, #83506, #83511, #88380	2.50	

COLLEGE OF ARTS, LANGUAGES & LETTERS  
OFFICE OF THE DEAN

DEPARTMENT OF HISTORY Org Code: MAHIST		
Chair (appointed from faculty)		
Admin & Fiscal Supp Spec, PBA, #81426		1.00
Student Svcs Spec, PBA, #78140		1.00
Associate Chair (appointed from faculty)		
Instructional Faculty:		27.00
#82025, #82044, #82147, #82164, #82191, #82370, #82428, #82475, #82612, #82655, #83010, #83318, #83322, #83415, #83576, #83676, #83754, #83989, #84155, #84161, #84241, #84333, #84415, #84432, #84524, #84839, #85448		
Graduate Assistant:		3.00
#88030, #88323, #88329, #88342, #88547 #88556		



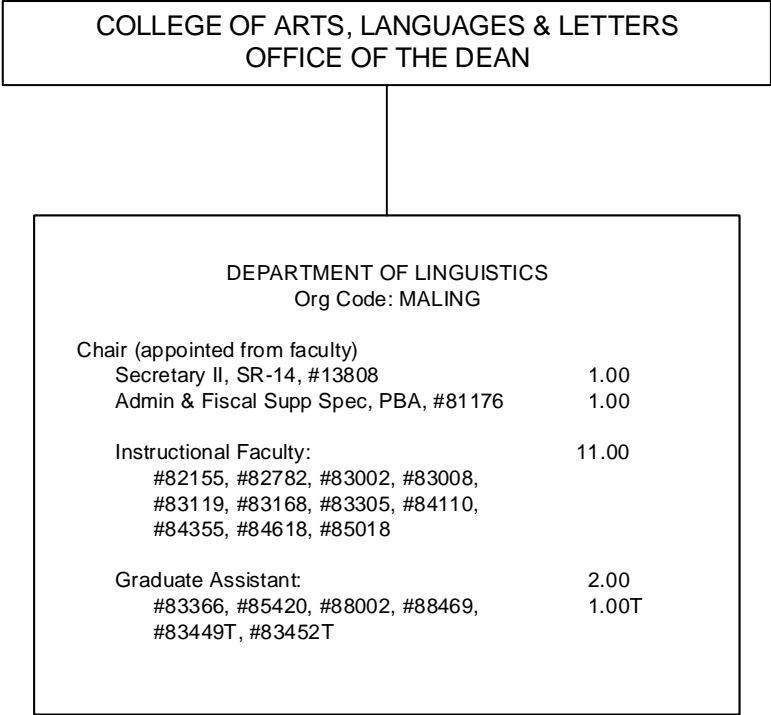
STATE OF HAWAI'I  
UNIVERSITY OF HAWAI'I  
UNIVERSITY OF HAWAI'I AT MĀNOA  
OFFICE OF THE PROVOST  
COLLEGE OF ARTS, LANGUAGES & LETTERS  
DEPARTMENT INDO-PACIFIC  
LANGUAGES & LITERATURES  
Organization Chart  
Chart II-I

COLLEGE OF ARTS, LANGUAGES & LETTERS  
OFFICE OF THE DEAN

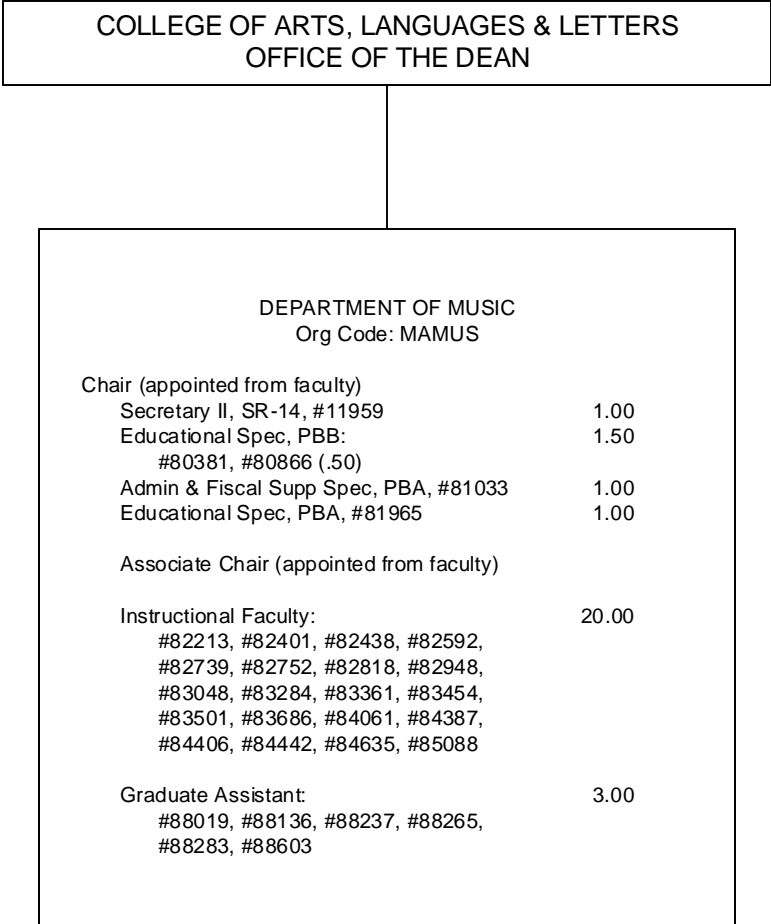
STATE OF HAWAI'I  
UNIVERSITY OF HAWAI'I  
UNIVERSITY OF HAWAI'I AT MĀNOA  
OFFICE OF THE PROVOST  
COLLEGE OF ARTS, LANGUAGES & LETTERS  
DEPARTMENT OF  
LANGUAGES & LITERATURES OF EUROPE & THE AMERICAS  
Organization Chart  
Chart II-J

DEPARTMENT OF  
LANGUAGES & LITERATURES OF EUROPE & THE AMERICAS  
Org Code: MALLEA

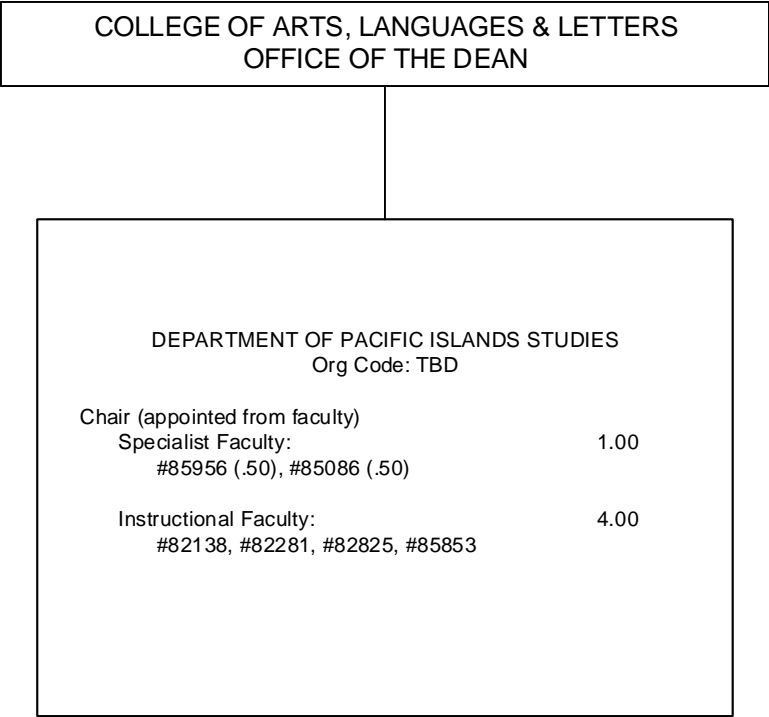
Chair (appointed from faculty)	
Secretary II, SR-14, #15346	1.00
Office Asst IV, SR-10, #22367	1.00
Educational Spec, PBB, #81199	1.00
Instructional Faculty:	
#82100, #82101, #82115, #82163, #82270, #82733, #82827, #83043, #83246, #83247, #83253, #83254, #83265, #83427, #83656, #83761, #83975, #84024, #84081, #84101, #84112, #84445, #84682, #83020T, #83029T, #83039T, #83057T, #83102T, #83127T	23.00 6.00T
Graduate Assistant:	
#88006, #88086, #88118, #88124, #88179, #88209, #88250, #88343, #88390, #88395, #88475, #88490, #88502	6.50



STATE OF HAWAI'I  
UNIVERSITY OF HAWAI'I  
UNIVERSITY OF HAWAI'I AT MĀNOA  
OFFICE OF THE PROVOST  
COLLEGE OF ARTS, LANGUAGES & LETTERS  
**DEPARTMENT OF LINGUISTICS**  
Organization Chart  
Chart II-K



STATE OF HAWAI'I  
UNIVERSITY OF HAWAI'I  
UNIVERSITY OF HAWAI'I AT MĀNOA  
OFFICE OF THE PROVOST  
COLLEGE OF ARTS, LANGUAGES & LETTERS  
**DEPARTMENT OF MUSIC**  
Organization Chart  
Chart II-L



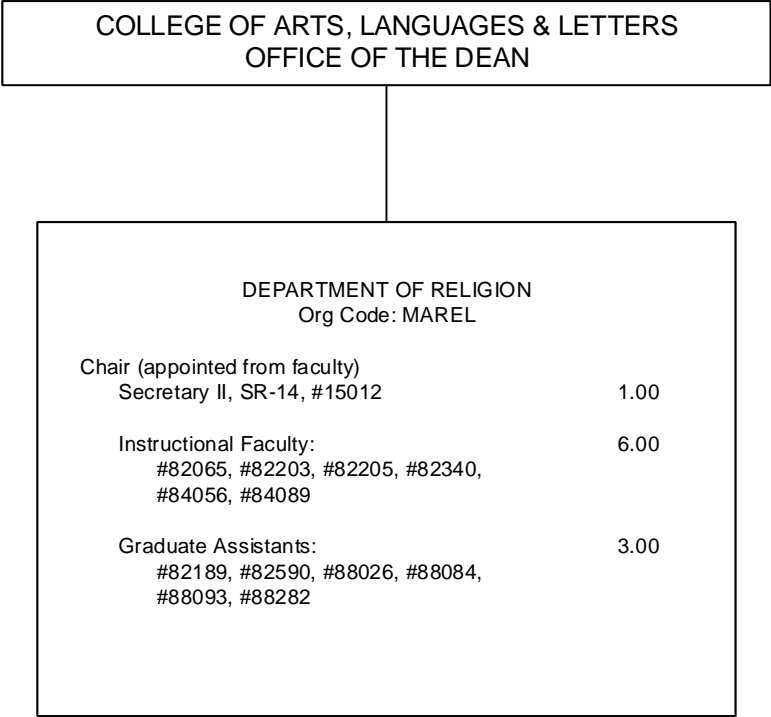
STATE OF HAWAI'I  
UNIVERSITY OF HAWAI'I  
UNIVERSITY OF HAWAI'I AT MĀNOA  
OFFICE OF THE PROVOST  
COLLEGE OF ARTS, LANGUAGES & LETTERS  
**DEPARTMENT OF PACIFIC ISLANDS STUDIES**  
Organization Chart  
Chart II-M

COLLEGE OF ARTS, LANGUAGES & LETTERS  
OFFICE OF THE DEAN

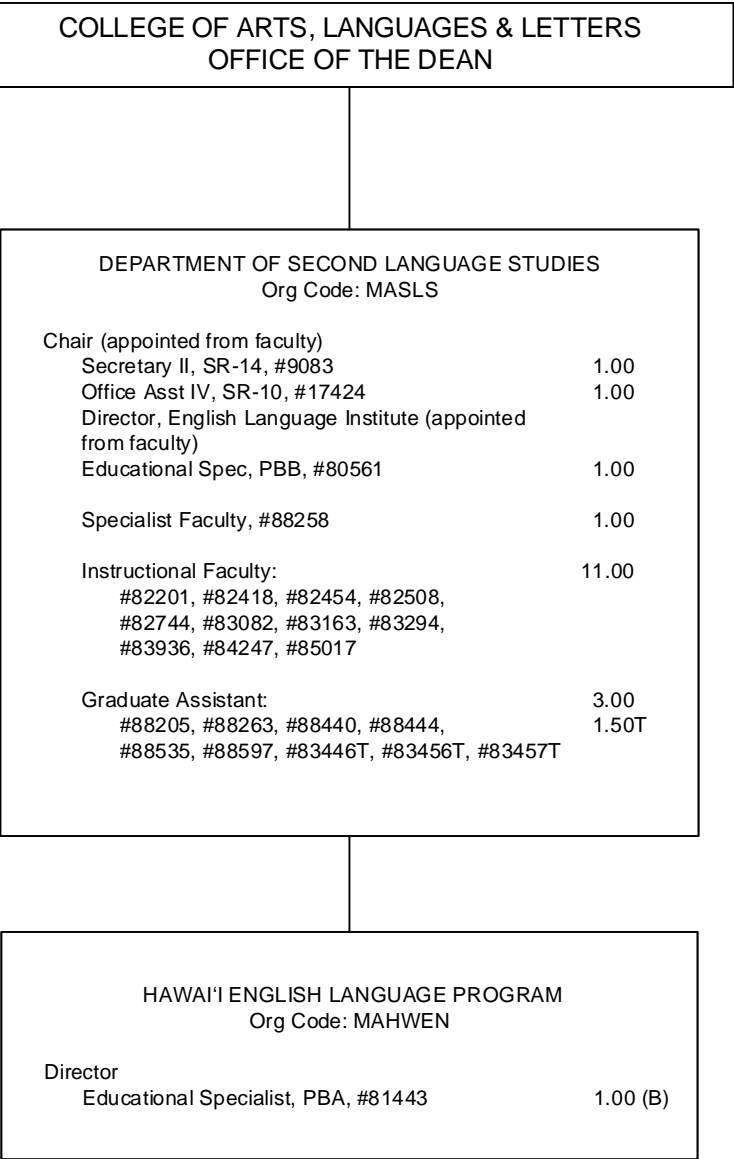
STATE OF HAWAIʻI  
UNIVERSITY OF HAWAIʻI  
UNIVERSITY OF HAWAIʻI AT MĀNOA  
OFFICE OF THE PROVOST  
COLLEGE OF ARTS, LANGUAGES & LETTERS  
DEPARTMENT OF PHILOSOPHY  
Organization Chart  
Chart II-N

DEPARTMENT OF PHILOSOPHY Org Code: MAPHIL		
Chair (appointed from faculty)		
Admin & Fiscal Supp Speck, PBA, #77431	1.00	
Office Asst III, SR-108, #15263	1.00	
Editor, PBA, #79339 (.75)	0.75	
Specialist Faculty, #82014, #83528		
	2.00	
Instructional Faculty:		
	11.00	
#82156, #82325, #82350, #82474,		
#82558, #82836, #82877, #83165,		
#83316, #84419, #84794		
Graduate Assistant:		
	2.50	
#88184, #88213, #88388, #88487,	0.50T	
#88507, #82132T		





STATE OF HAWAI'I  
UNIVERSITY OF HAWAI'I  
UNIVERSITY OF HAWAI'I AT MĀNOA  
OFFICE OF THE PROVOST  
COLLEGE OF ARTS, LANGUAGES & LETTERS  
DEPARTMENT OF  
SECOND LANGUAGE STUDIES  
Organization Chart  
Chart II-P

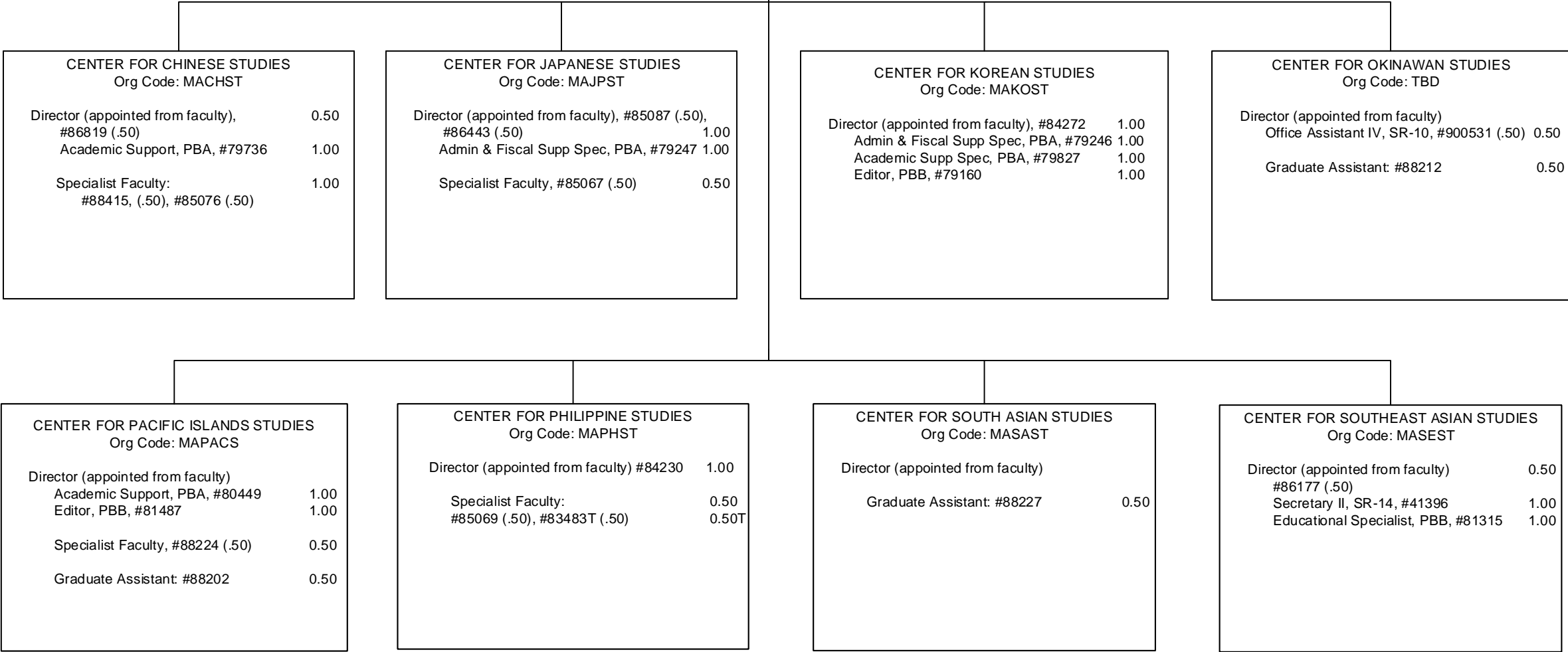


COLLEGE OF ARTS, LANGUAGES & LETTERS  
OFFICE OF THE DEAN

STATE OF HAWAI'I  
UNIVERSITY OF HAWAI'I  
UNIVERSITY OF HAWAI'I AT MĀNOA  
OFFICE OF THE PROVOST  
COLLEGE OF ARTS, LANGUAGES & LETTERS  
DEPARTMENT OF THEATRE & DANCE  
Organization Chart  
Chart II-Q

DEPARTMENT OF THEATRE & DANCE Org Code: MATD		
Chair (appointed from faculty)		
Secretary II, SR-14, #13647	1.00	
Admin & Fiscal Supp Spec, PBA, #77076	1.00	
Theater/Stage Manager, PBB, #80119	1.00	
Theater Technician, PBB: #78466, #80700, #81269	3.00	
Operation Coordinator, PBA, #80994	1.00	
Director of Theatre (Associate Chair) (appointed from faculty)		
Director of Dance Program (Associate Chair) (appointed from faculty)		
Instructional Faculty:	17.00	
#82110, #82161, #82227, #82234, #82260, #82302, #82640, #83250, #83252, #83337, #83436, #83439, #83591, #84095, #84434, #84574, #84678		
Graduate Assistant:	6.00	
#82419, #82549, #82568, #88000, #88051, #88052, #88053, #88127, #88207, #88211, #88246, #88324, #82117T, #82123T	1.00T	

COLLEGE OF ARTS, LANGUAGES & LETTERS  
OFFICE OF THE DEAN



COLLEGE OF ARTS, LANGUAGES & LETTERS  
OFFICE OF THE DEAN

