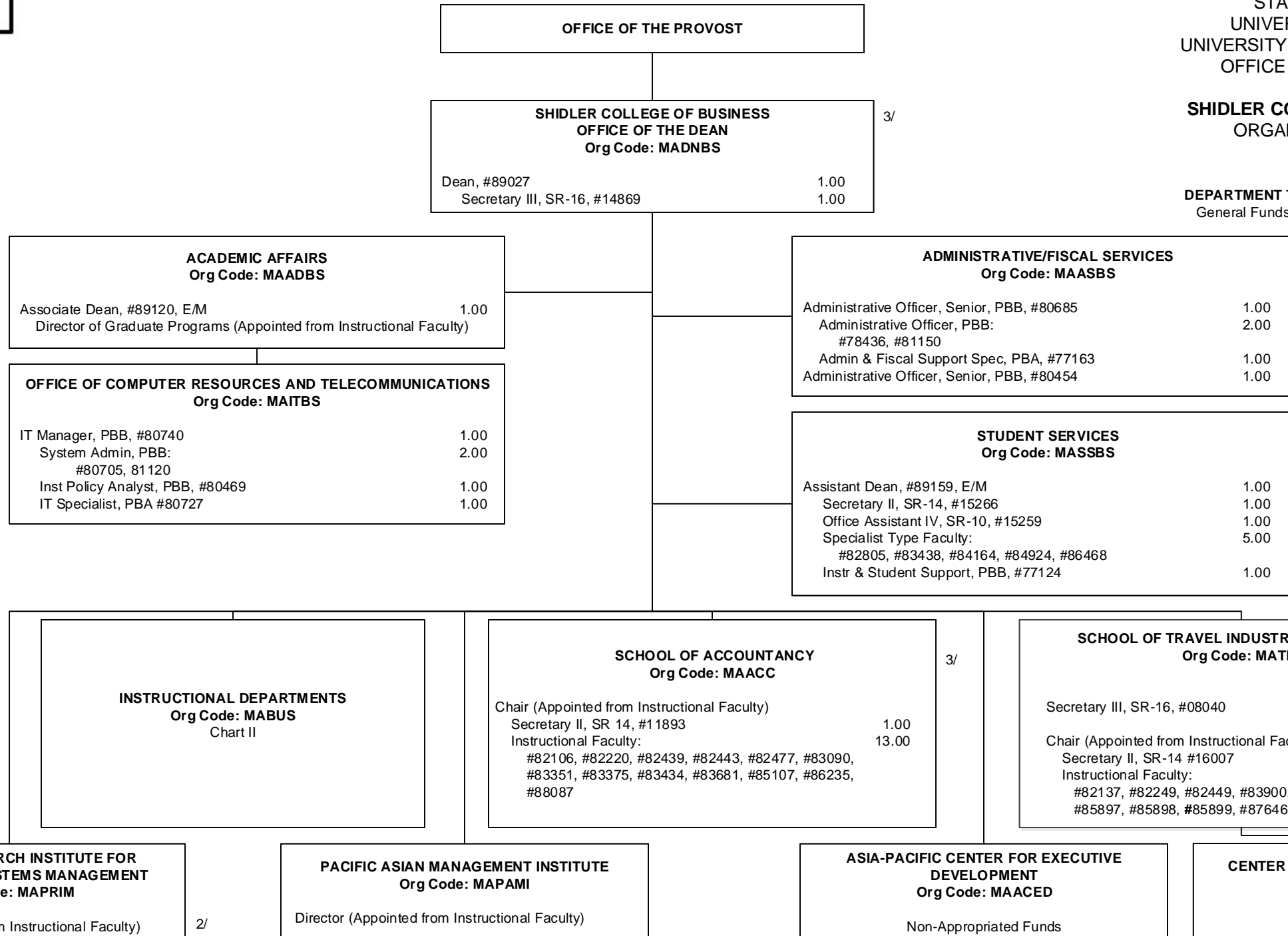


SHIDLER COLLEGE OF BUSINESS
ORGANIZATION CHART
CHART I

DEPARTMENT TOTAL:	PERM	TEMP
General Funds:	95.00	1.00



1/ Secretary III and Secretary II positions in School of Travel Industry Management to be redescribed, as appropriate
2/ Director in Pacific Research Institution for Information Systems Management pending, to be established
3/ Shidler Advisory Council, SOA Advisory Board and TIM Advisory Board are not included in the Org Chart above

CHART TOTAL:	PERM	TEMP
General Funds:	48.00	- -

STATE OF HAWAIʻI
UNIVERSITY OF HAWAIʻI
UNIVERSITY OF HAWAIʻI AT MĀNOA
OFFICE OF THE PROVOST
SHIDLER COLLEGE OF BUSINESS
INSTRUCTIONAL DEPARTMENTS
ORGANIZATION CHART
CHART II

