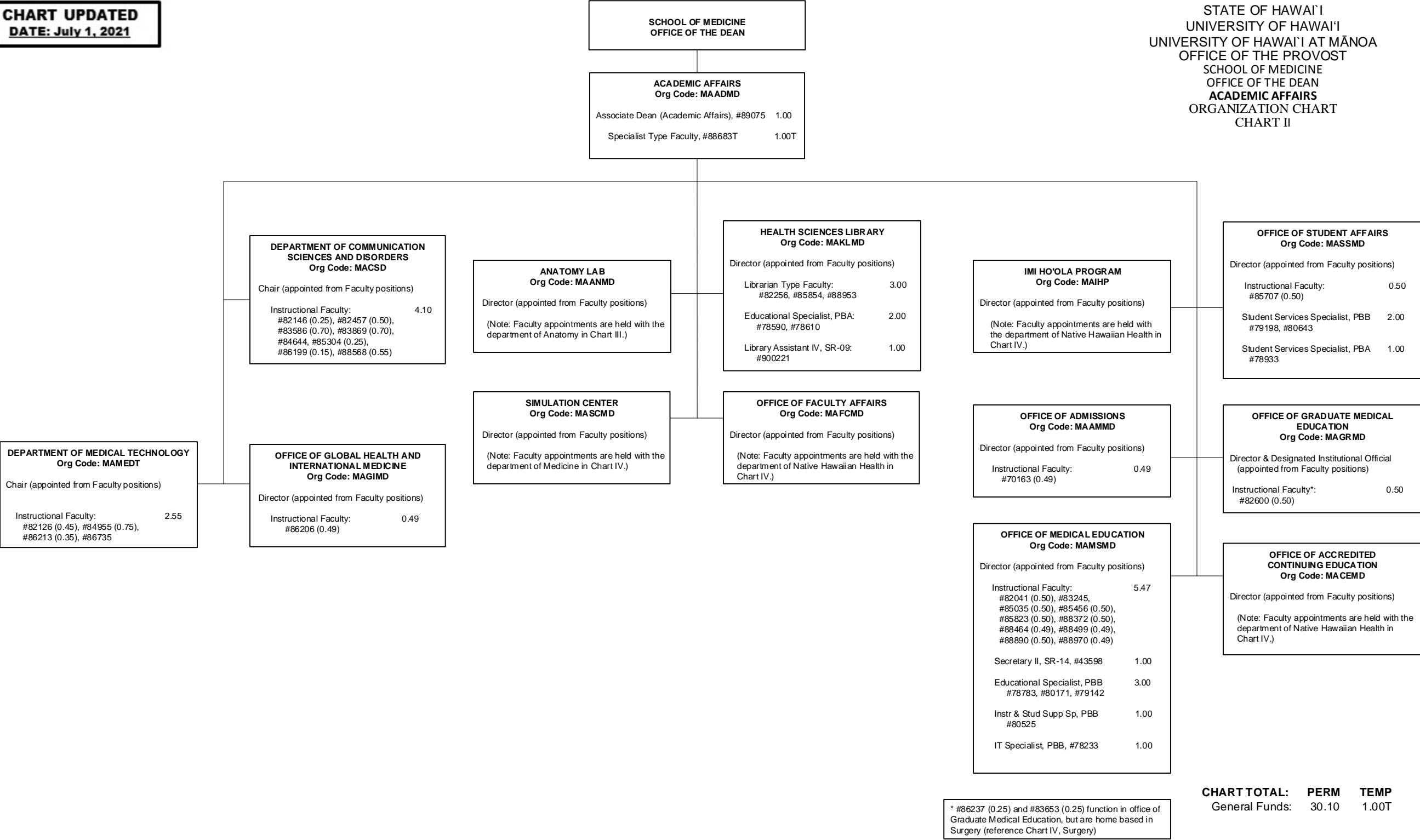
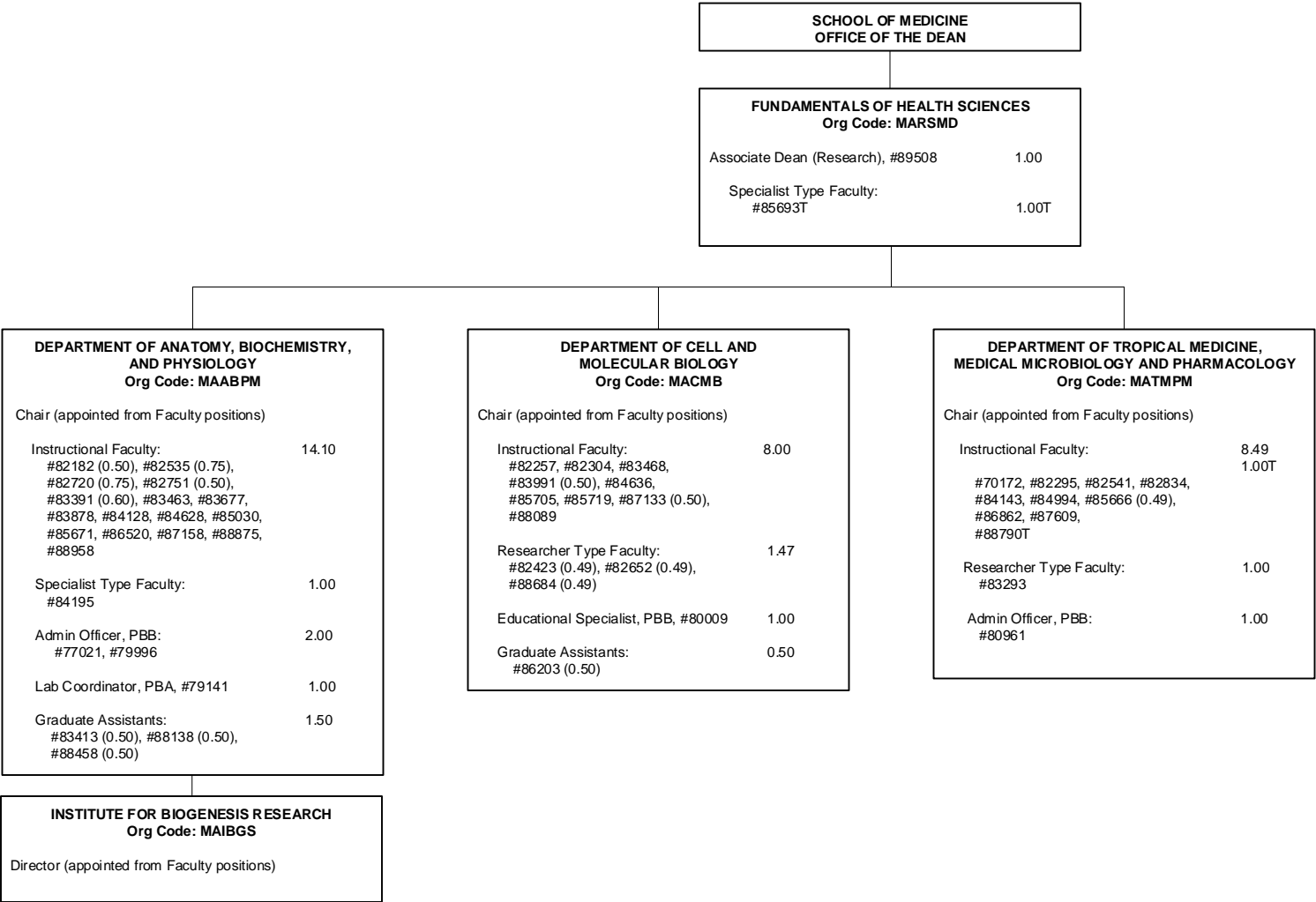


DEPARTMENT TOTAL:	PERM	TEMP
General Funds:	195.81	3.50

\* - To be redescribed

CHART TOTAL:	PERM	TEMP
General Funds:	3.09	0.00





SCHOOL OF MEDICINE

OFFICE OF THE DEAN

CLINICAL SCIENCES

Org Code: MACSMD

Associate Dean (Clinical Affairs)\*

DEPARTMENT OF FAMILY MEDICINE AND  
COMMUNITY HEALTH

Org Code: MAFMCH

Chair (appointed from Faculty positions)

Instructional Faculty:	4.65
#83526 (0.25), #83670,	
#83658 (0.49), #83731 (0.50),	
#83931 (0.25), #83994,	
#84152 (0.10), #85562 (0.31),	
#85760 (0.30), #88790 (0.25),	
#88854 (0.20)	

DEPARTMENT OF GERIATRIC MEDICINE

Org Code: MAGERI

Chair (appointed from Faculty positions)

Instructional Faculty:	7.09
#82506 (0.25), #82520 (0.15),	
#82732 (0.49), #82849 (0.35),	
#83025 (0.25), #83099 (0.15),	
#83176 (0.20), #83177 (0.39),	
#83575 (0.10), #83958 (0.10),	
#85315 (0.49), #85489, #85665 (0.39),	
#88455 (0.20), #88512 (0.20),	
#88558 (0.34), #88633 (0.20),	
#88694, #88695 (0.49), #88791 (0.15),	
#88954 (0.20)	

Administrative Off, PBB:	2.00
#77639, #79197	

DEPARTMENT OF OBSTETRICS,  
GYNECOLOGY AND WOMEN'S HEALTH

Org Code: MAOBGN

Chair (appointed from Faculty positions)

Instructional Faculty:	5.15
#83618 (0.50), #84032 (0.20),	
#84134 (0.50), #84939 (0.50),	
#84985 (0.50), #86325, #86453 (0.50),	
#86940 (0.50), #87176 (0.45),	
#88562 (0.50)	

DEPARTMENT OF PATHOLOGY

Org Code: MAPATH

Chair (appointed from Faculty positions)

Instructional Faculty:	4.50
#82651 (0.50), #82817 (0.25),	
#82839 (0.20), #83276 (0.05),	
#83773 (0.25), #83949 (0.50),	
#84630 (0.60), #85247 (0.50),	
#85763 (0.25), #86559 (0.45),	
#87250 (0.45), #87277 (0.50)	

Secretary II, SR-14, #15609	1.00
-----------------------------	------

DEPARTMENT OF PEDIATRICS

Org Code: MAPED

Chair (appointed from Faculty positions)

Instructional Faculty:	4.83
#82365 (0.20), #83270 (0.25)	0.50T
#83715 (0.25), #84058 (0.75),	
#84317, #84543 (0.08), #85264,	
#85724 (0.50), #85757 (0.50),	
#85770 (0.05), #87273 (0.25),	
#88863T (0.50)	

Admin & Fis Supp, PBA, #77914	1.00
-------------------------------	------

DEPARTMENT OF PSYCHIATRY

Org Code: MAPSTY

Chair (appointed from Faculty positions)

Instructional Faculty:	7.55
#70040 (0.25), #82210,	
#82815 (0.49), #83046 (0.49),	
#83505 (0.49), #83540, #83564,	
#83843 (0.49), #84257 (0.50),	
#84390 (0.25), #85561 (0.49),	
#87235, #88880 (0.10)	

DEPARTMENT OF NATIVE  
HAWAIIAN HEALTH

Org Code: MANHH

Chair (appointed from Faculty positions)

Instructional Faculty:	7.46
#70164 (0.49), #82228, #82824 (0.50),	
#83536 (0.49), #85569 (0.50), #85614,	
#85893 (0.50), #86057 (0.50), #86332,	
#87366 (0.50), #88473 (0.49),	
#88663 (0.49)	

Specialist Type Faculty:	2.90
#84554, #85449, #88902 (0.90)	

Administrative Off, PBB, #80900	1.00
---------------------------------	------

DEPARTMENT OF QUANTITATIVE HEALTH  
SCIENCES

Org Code: MACAAM

Chair (appointed from Faculty positions)

Instructional Faculty:	4.00
#82529, #82858, #86194,	
#85398 (0.50), #85668 (0.50)	

Researcher Type Faculty:	1.00
#83651	

Specialist Type Faculty:	0.60
#85571 (0.60)	

Secretary II, SR-14, #23961	1.00
-----------------------------	------

DEPARTMENT OF MEDICINE

Org Code: MAMED

Chair (appointed from Faculty positions)

Instructional Faculty:	7.98
#83077 (0.30), #83215 (0.55),	
#83236 (0.49), #83383 (0.25),	
#83495 (0.49), #84100 (0.25),	
#84684, #85006, #85549 (0.25),	
#85670 (0.25), #85742 (0.50),	
#85744 (0.25), #85756 (0.30),	
#85759 (0.05), #85798 (0.25),	
#85771 (0.35), #85775 (0.25),	
#85974 (0.25), #88574 (0.45),	
#88780 (0.45), #88888 (0.05)	

Specialist Type Faculty:	0.90
#83979 (0.90)	

Academic Support Sp, PBA, #78982	1.00
----------------------------------	------

AREA HEALTH EDUCATION CENTER

Org Code: MAAHMD

Director (appointed from Faculty positions)

Non-Appropriated Funds

DEPARTMENT OF SURGERY

Org Code: MASURG

Chair (appointed from Faculty positions)

Instructional Faculty:	7.15
#82725 (0.25), #83583,	
#83653 (0.25), #83736 (0.85),	
#84108 (0.10), #84269 (0.10),	
#84583 (0.50), #84861 (0.25),	
#84912 (0.15), #85055 (0.15),	
#85452 (0.05), #85787 (0.45),	
#85841, #86086 (0.10), #86237 (0.25),	
#86969 (0.50), #87688 (0.60),	
#88453 (0.25), #88541 (0.10),	
#88700 (0.15), #88792 (0.10)	

Specialist Type Faculty:	1.00
#84253	

Academic Supp, PBA, #79824	1.00
----------------------------	------

NATIVE HAWAIIAN CENTER  
OF EXCELLENCE

Org Code: MANHCE

Director (appointed from Faculty positions)

Instructional Faculty:	0.50
#83906 (0.50)	

Specialist Type Faculty:	1.80
#83671 (0.90), #84030 (0.90)	

CENTER FOR NATIVE AND PACIFIC  
HEALTH DISPARITIES AND RESEARCH

Org Code: MANPHD

Director (appointed from Faculty positions)

Instructional Faculty:	1.00
#82997	

CENTER FOR CARDIOVASCULAR  
RESEARCH

Org Code: MACCR

Director (appointed from Faculty positions)

Instructional Faculty:	3.00
#82791, #82194, #82978	

HAWAII CENTER FOR AIDS RESEARCH

Org Code: MAHCAR

Director (appointed from Faculty positions)

\* - To be established

CHART TOTAL:	PERM	TEMP
General Funds:	81.06	0.50

STATE OF HAWAI'I  
UNIVERSITY OF HAWAI'I  
UNIVERSITY OF HAWAI'I AT MĀNOA  
OFFICE OF THE PROVOST  
SCHOOL OF MEDICINE  
OFFICE OF THE DEAN  
ADMINISTRATION, FINANCE, AND OPERATIONS  
ORGANIZATION CHART  
CHART V

