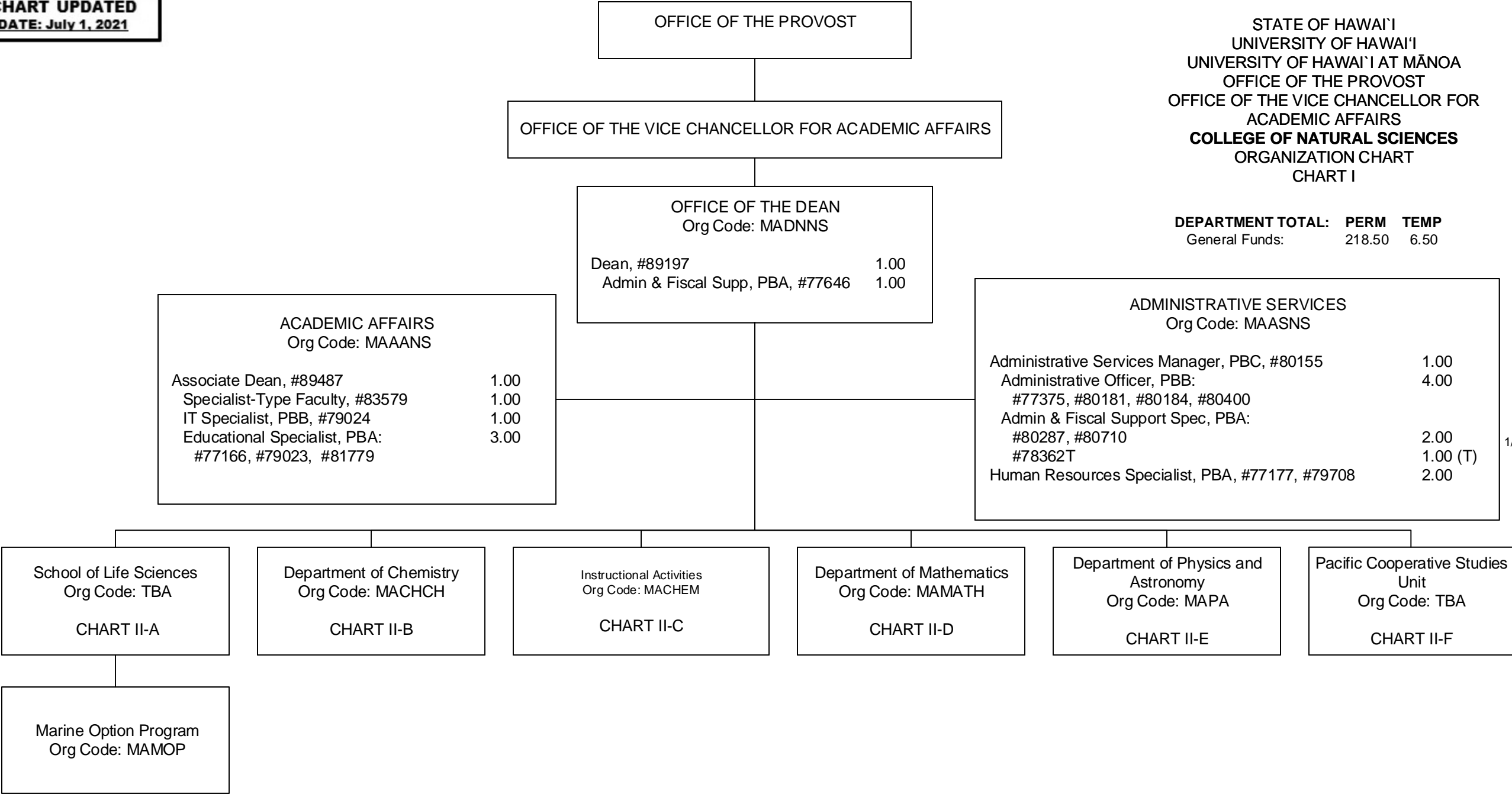


DEPARTMENT TOTAL: PERM TEMP
General Funds: 218.50 6.50



1/ Administrative Officer, #78362T in Administrative Services is an appropriated temporary position

OFFICE OF THE DEAN

STATE OF HAWAI'I
UNIVERSITY OF HAWAI'I
UNIVERSITY OF HAWAI'I AT MĀNOA
OFFICE OF THE PROVOST
OFFICE OF THE VICE CHANCELLOR FOR
ACADEMIC AFFAIRS
COLLEGE OF NATURAL SCIENCES

SCHOOL OF LIFE SCIENCES
POSITION ORGANIZATION CHART

CHART II-A

School of Life Sciences Org Code: MALFSC	
Director of the School of Life Sciences (Appointed from Faculty Positions)	
Associate Director for Curriculum (Appointed from Faculty Positions)	
Associate Director for Instruction (Appointed from Faculty Positions)	
Associate Director for Research (Appointed from Faculty Positions)	
Chair for Undergraduate Education (Appointed from Faculty Positions)	
Chair for Undergraduate Education (Appointed from Faculty Positions)	
Secretary II, SR-14, #13979, #17564	2.00
Administrative Officer, PBA, #81425	1.00
Admin & Fiscal Support Spec, PBA, #80681	1.00
Program Manager, PBB, #77266	1.00
Educational Specialist, PBB, #77383, #78993, #80296, #80521, #80637, #81177	6.00
Educational Specialist, PBA, #78359	1.00
Instructional Faculty:	
#82007, #82015, #82208, #82243, #82269, #82301, #82411, #82424, #82434, #82552, #82674, #82921, #83079, #83232, #83297, #83344, #83598, #83691, #83709, #83755, #83813, #83857, #83910, #83963, #84037, #84144, #84162, #84189, #84248, #84282, #84472, #85019, #85414, #85790, #85803, #88135, #88993	37.00
Specialist-Type Faculty:	
#70244	1.00
Graduate Assistants:	
#85040, #88021, #88034, #88063, #88068, #88070, #88081, #88097, #88105, #88114, #88150, #88153, #88157, #88159, #88173, #88177, #88226, #88256, #88271, #88273, #88278, #88311, #88351, #88447, #88461, #88472, #88479, #88480, #88516, #88523, #88530, #88599, #88628	16.50
#83828T	0.50 (T)

1/

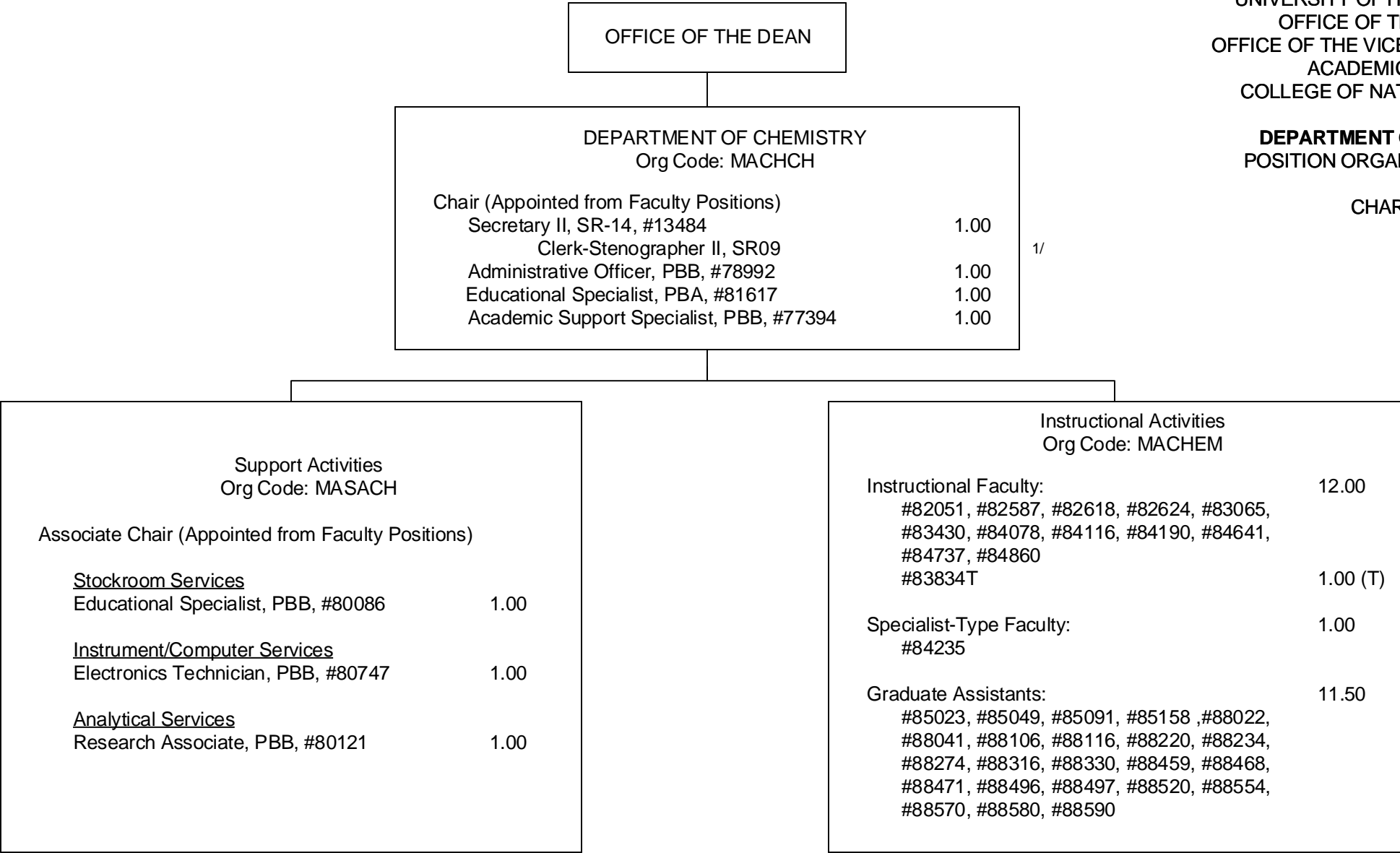
Marine Option Program
Org Code: MAMOP

CHART TOTAL: PERM TEMP
General Funds: 66.50 0.50

1/ Graduate Asst, #83828T are appropriated temporary positions.

DEPARTMENT OF CHEMISTRY
POSITION ORGANIZATION CHART

CHART II-B



1/ Clerk Steno II in Department of Chemistry abolished, pending re-establishment.

2/ Instructional Faculty #83834T in Instructional Activities is an appropriated temporary position

OFFICE OF THE DEAN

DEPARTMENT OF INFORMATION AND COMPUTER SCIENCES
Org Code: MAICS

Chair (Appointed from Faculty Positions)	
Associate Chair for Computer Science (Appointed from Faculty Positions)	
Associate Chair for Library and Information Science (Appointed from Faculty Positions)	
Secretary II, SR-14, #18055	1.00
System Administrator, PBB, #81447	1.00
Admin & Fiscal Support Specialist, PBA, #81985	1.00
Operations Coordinator, PBA, #79298	1.00
Information Technology Specialist, PBA, #77155	1.00
Instructional Faculty:	
#70284, #82070, #82287, #82468, #82735, #82787, #82794, #82835, #83203, #83381, #83393, #83408, #83426, #83443, #83602, #83889, #83999, #84029, #84270, #84427, #86062, #87503, #87504, #88680, #88715 (0.50)	24.50
Specialist-Type Faculty:	
#82649, #83916	2.00
Graduate Assistants:	
#85650, #86422, #86464, #86465, #86466, #86467, #87556, #87557	4.00

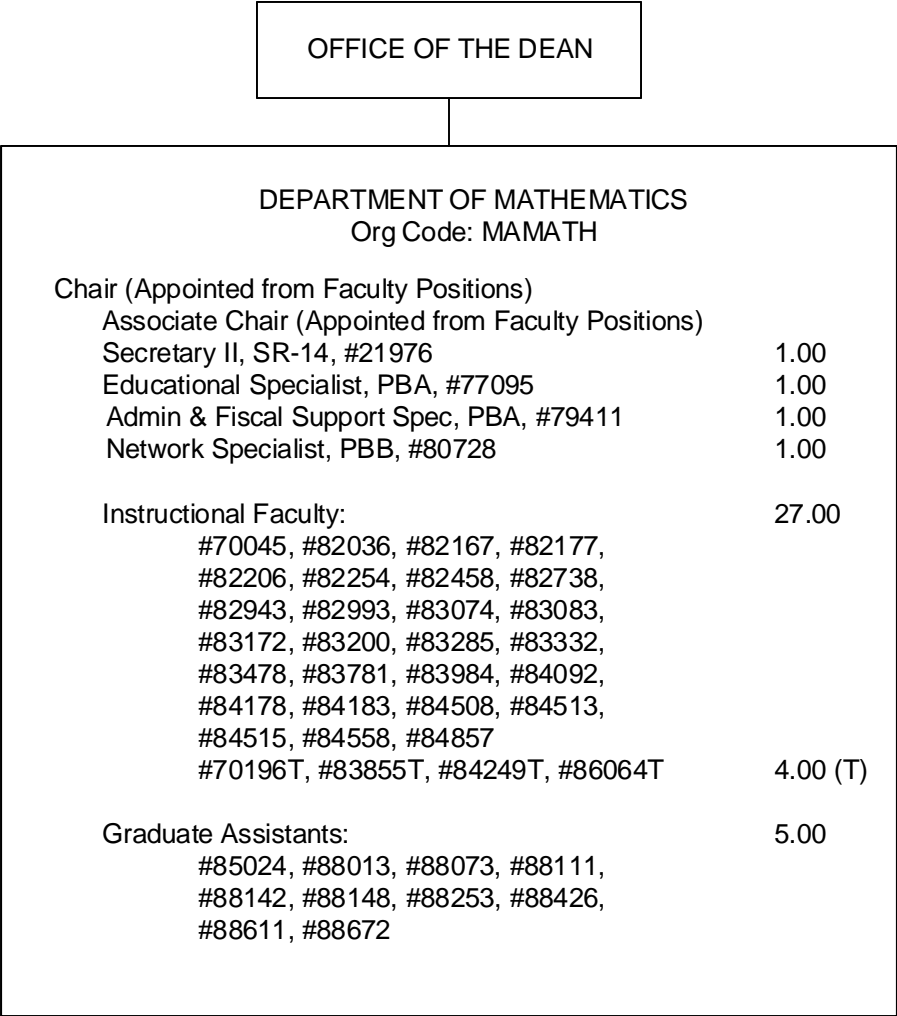
STATE OF HAWAI'I
UNIVERSITY OF HAWAI'I
UNIVERSITY OF HAWAI'I AT MĀNOA
OFFICE OF THE PROVOST
OFFICE OF THE VICE CHANCELLOR FOR
ACADEMIC AFFAIRS
COLLEGE OF NATURAL SCIENCES

DEPARTMENT OF INFORMATION
AND COMPUTER SCIENCES
POSITION ORGANIZATION CHART

CHART II-C

DEPARTMENT OF MATHEMATICS
POSITION ORGANIZATION CHART

CHART II-D



OFFICE OF THE DEAN

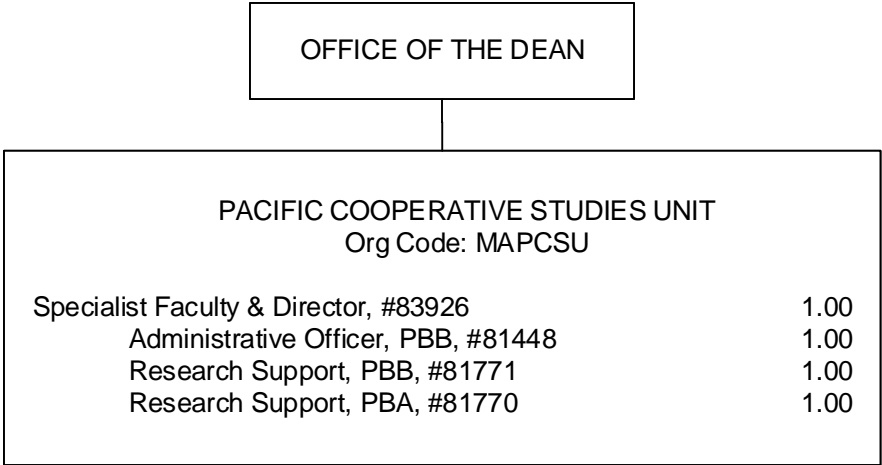
STATE OF HAWAI'I
UNIVERSITY OF HAWAI'I
UNIVERSITY OF HAWAI'I AT MĀNOA
OFFICE OF THE PROVOST
OFFICE OF THE VICE CHANCELLOR FOR
ACADEMIC AFFAIRS
COLLEGE OF NATURAL SCIENCES

DEPARTMENT OF PHYSICS AND ASTRONOMY
POSITION ORGANIZATION CHART

CHART II-E

DEPARTMENT OF PHYSICS AND ASTRONOMY
Org Code: MAPA

Chair (Appointed from Faculty Positions)		
Associate Chair (Appointed from Faculty Position)		
Office Assistant III, SR-08, #14355	1.00	
Admin & Fiscal Support Specialist, PBA, #77577	1.00	
Scientific Instrument Technician, PBB, #80706	1.00	
Scientific Instrument Technician, PBB, #80703	1.00	
Instructional Faculty:		
#82217, #82314, #82473, #82633, #82770,	18.00	
#82875, #83534, #83547, #83790, #83861,		
#83915, #84240, #84398, #84494, #84587,		
#84852, #84876, #88615		
Assistant Specialist-Type Faculty: #70061		
	1.00	
Graduate Assistants:		
#88176, #88198, #88270, #88309,	5.00	
#88385, #88389, #88478, #88524,		
#88593, #88650		



STATE OF HAWAI'I
UNIVERSITY OF HAWAI'I
UNIVERSITY OF HAWAI'I AT MĀNOA
OFFICE OF THE PROVOST
OFFICE OF THE VICE CHANCELLOR FOR
ACADEMIC AFFAIRS
COLLEGE OF NATURAL SCIENCES

PACIFIC COOPERATIVE STUDIES UNIT
POSITION ORGANIZATION CHART

CHART II-F