

STATE OF HAWAII
UNIVERSITY OF HAWAII
UNIVERSITY OF HAWAII AT MANOA
OFFICE OF THE PROVOST
COLLEGE OF SOCIAL SCIENCES
ORGANIZATIONAL CHART
CHART I

DEPARTMENT TOTAL:	PERM	TEMP
General Funds:	230.00	3.25

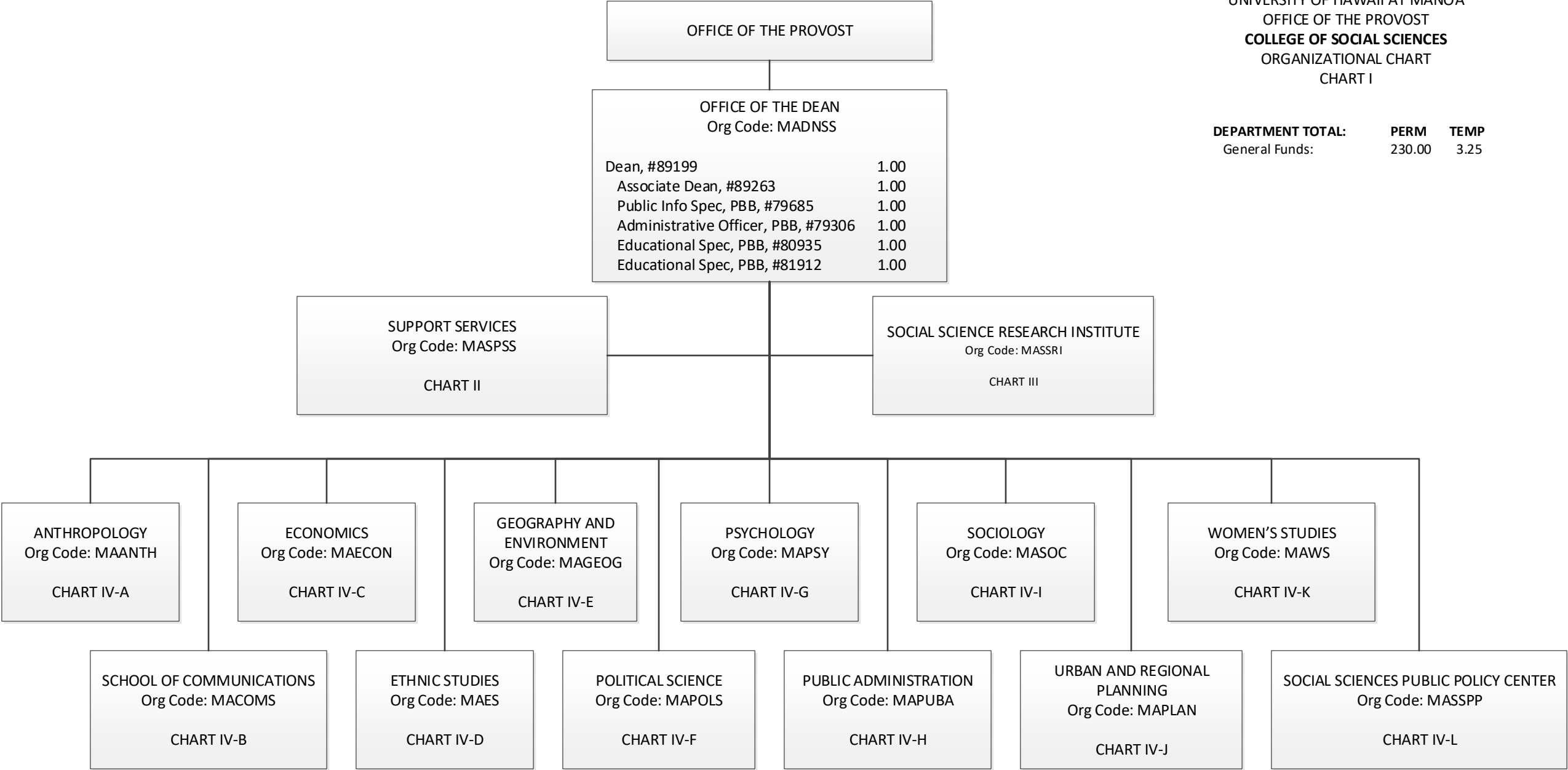
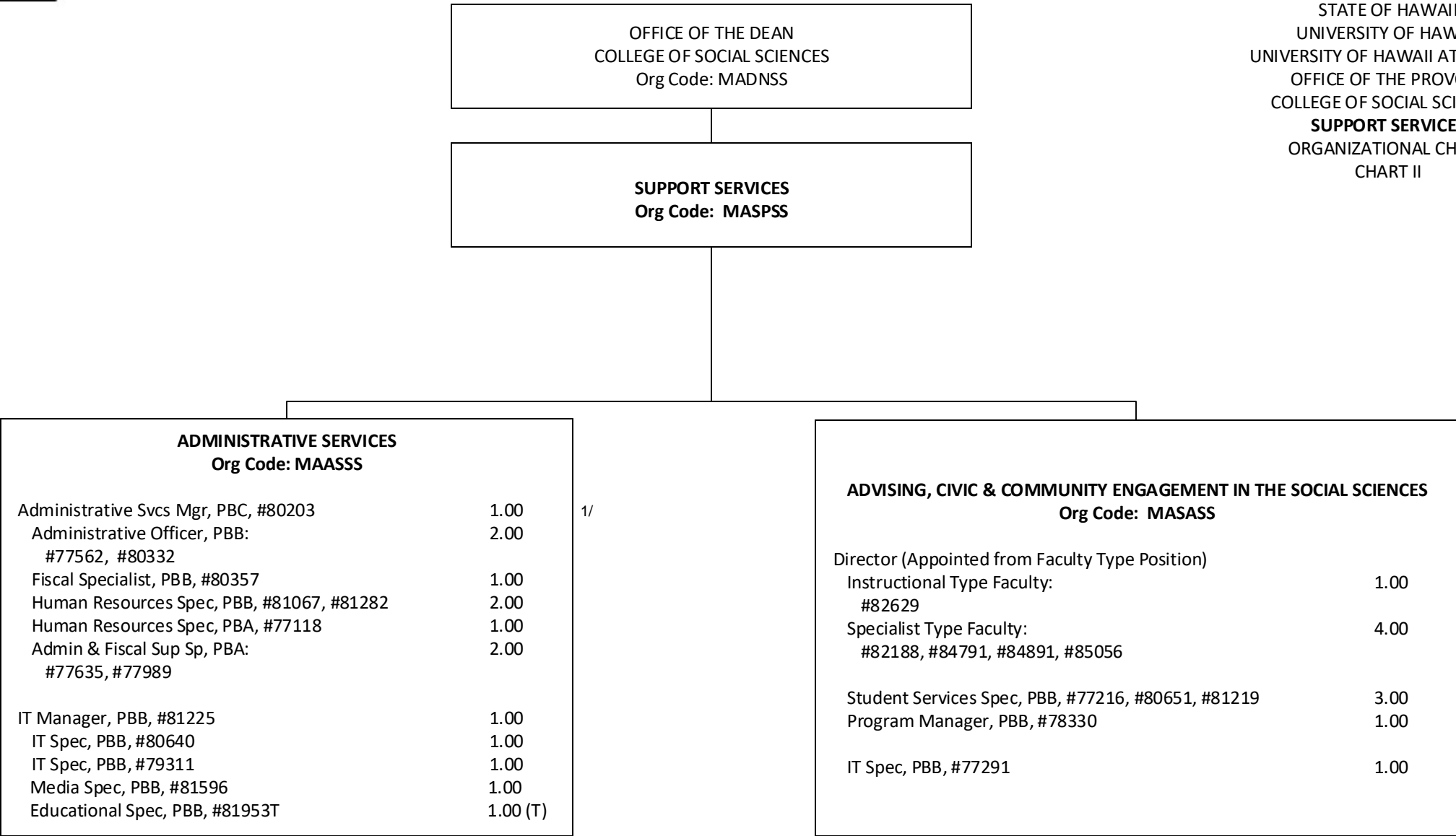


CHART TOTAL:	PERM	TEMP
General Funds:	6.00	--



1/ Admin Ofcr, #80203 in Administrative Services provides technical supervision to positions #77767, #80107, #81943 (Chart III)

STATE OF HAWAII
UNIVERSITY OF HAWAII
UNIVERSITY OF HAWAII AT MANOA
OFFICE OF THE PROVOST
COLLEGE OF SOCIAL SCIENCES
SOCIAL SCIENCE RESEARCH INSTITUTE
ORGANIZATIONAL CHART
CHART III

OFFICE OF THE DEAN

SOCIAL SCIENCE RESEARCH INSTITUTE
OFFICE OF THE DIRECTOR
Org Code: MASSRI

Director, #86226	1.00
Specialist Type Faculty: #88751 (0.75)	0.75
Adm & Fiscal Support Sp, PBA, #80087	1.00
#80819T (0.25)	0.25T

1/

FISCAL SERVICES
Org Code: MAASRI

Administrative Officer, PBB #77767, #80107, #81943	3.00
Admin & Fiscal Support Sp, PBA, #77465	1.00

ECONOMIC RESEARCH ORGANIZATION
Org Code: MARSRI

Instr Type Faculty, #84797 (0.50)	0.50
Instr Type Faculty, #84871	1.00
Specialist Type Faculty: #84643, #84870, #88744 (0.50)	2.50
IT Specialist, PBB, #79547	1.00

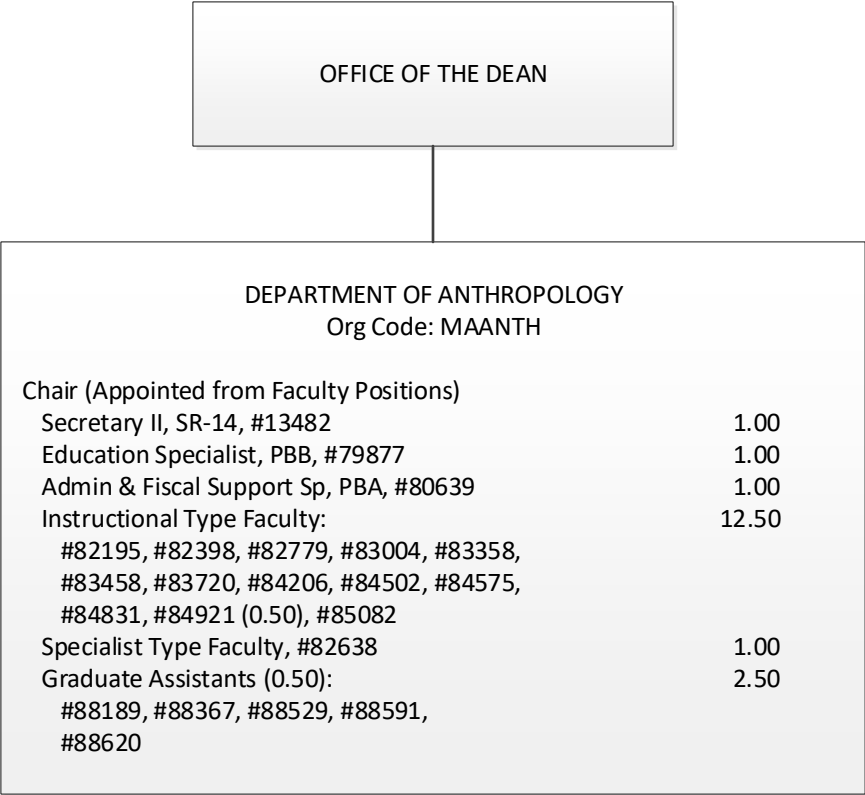
CENTER FOR YOUTH RESEARCH
Org Code: MAYRRI

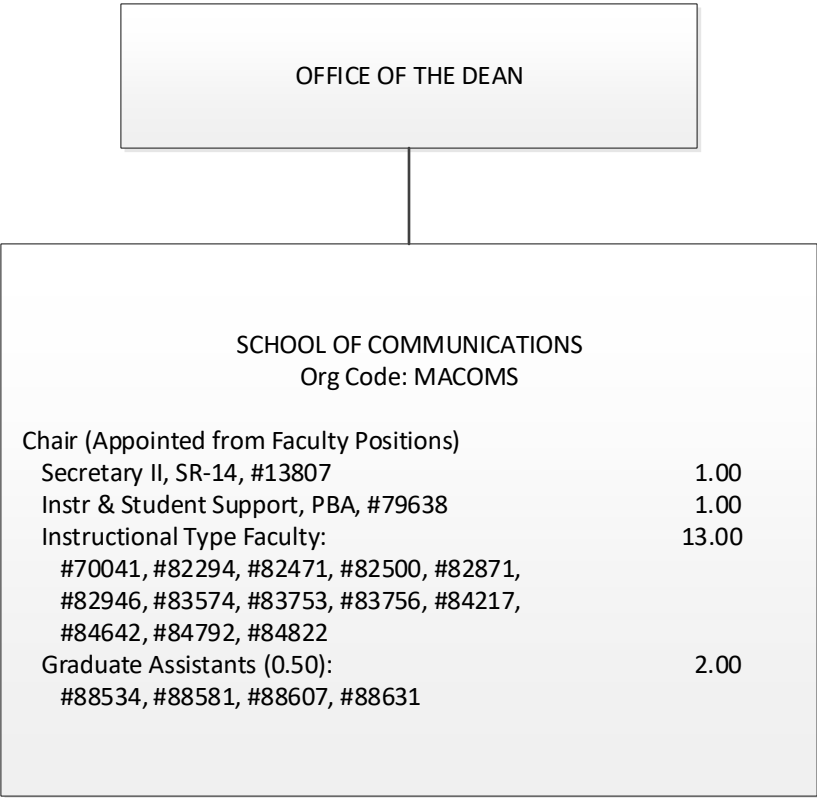
Instr Type Faculty, #84797 (0.50)	0.50
Ed Specialist, PBB, #80531	1.00

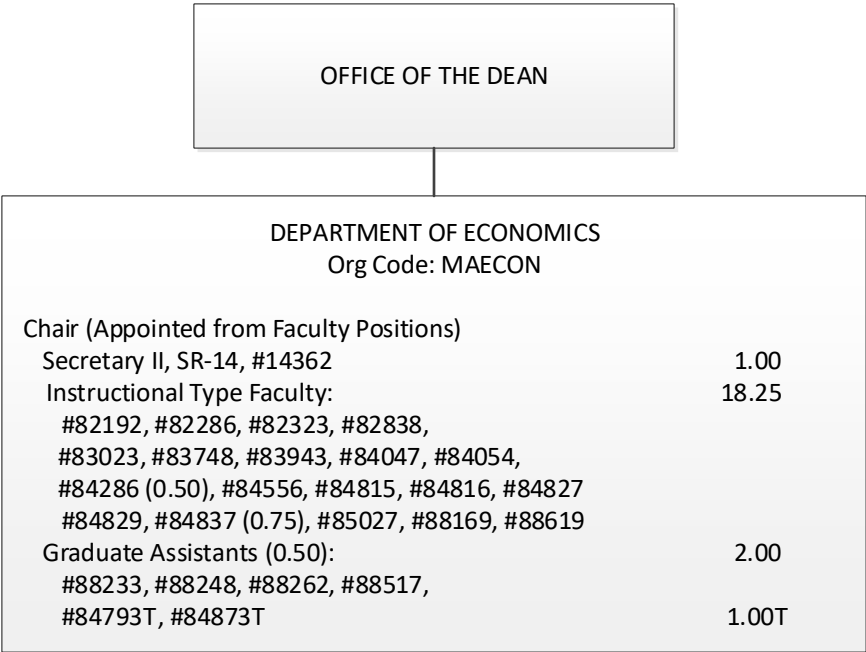
TELECOMMUNICATIONS AND SOCIAL INFORMATICS (TASI)
RESEARCH PROGRAM / PACIFIC HEALTH INFORMATICS AND
DATA CENTER (PHIDC)
Org Code: MAPSAT

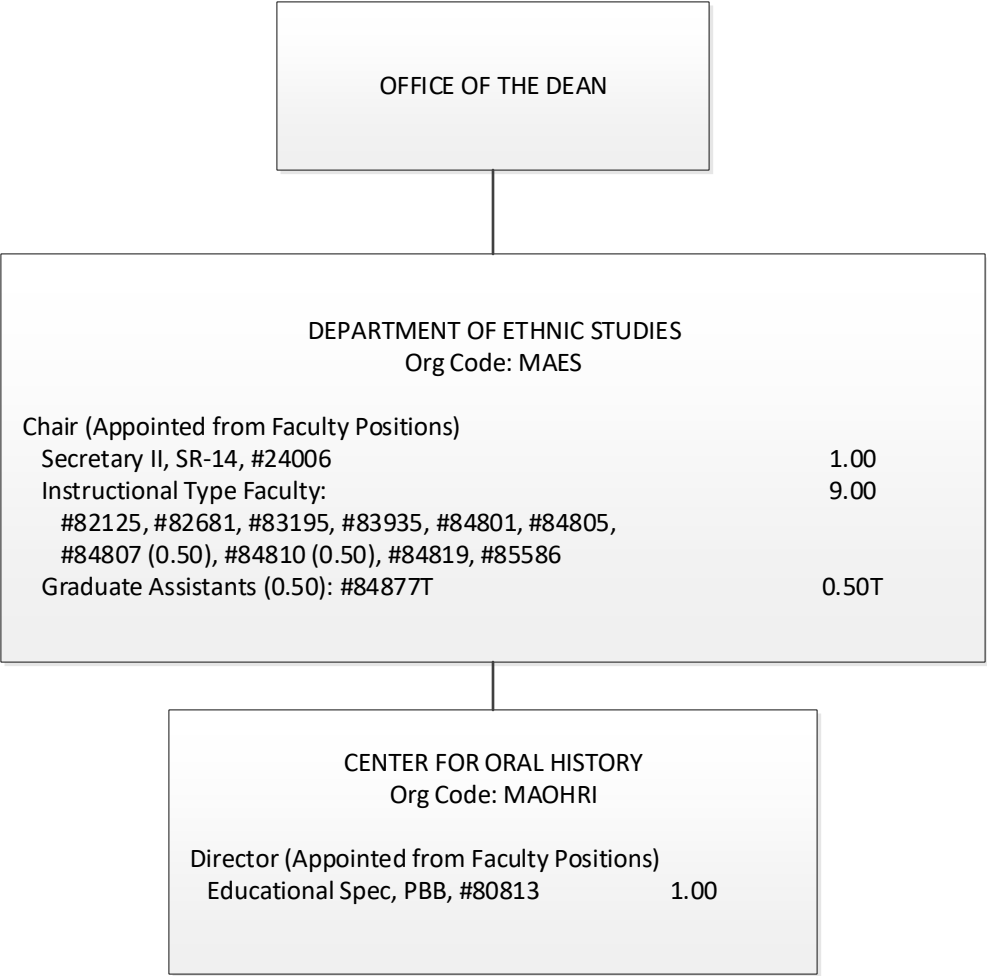
Specialist Type Faculty, #83924, #86225	2.00
---	------

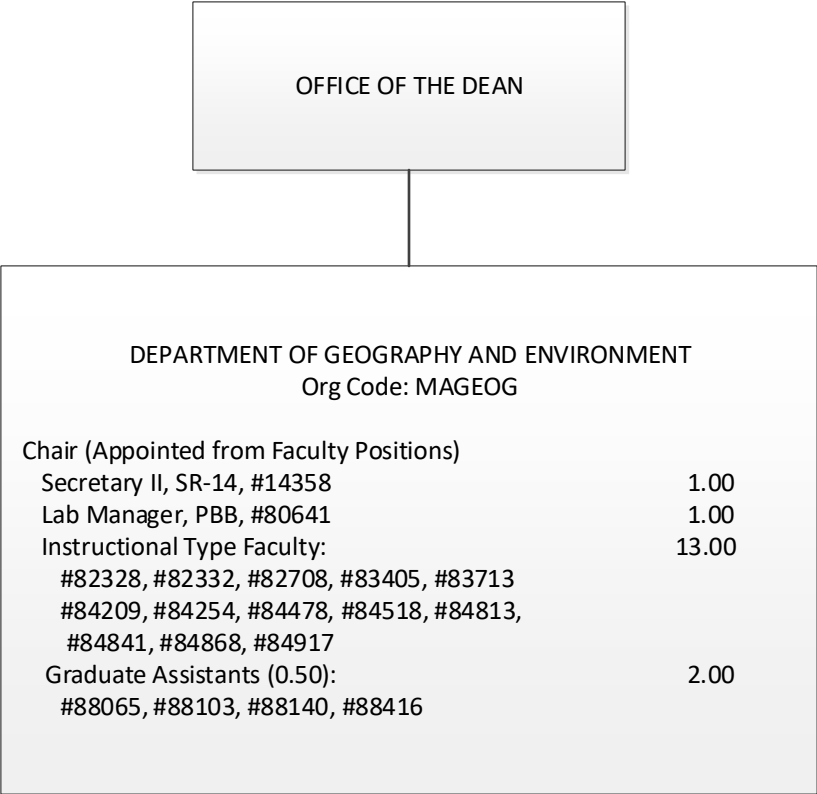
1/ #80819T abolished, to be established

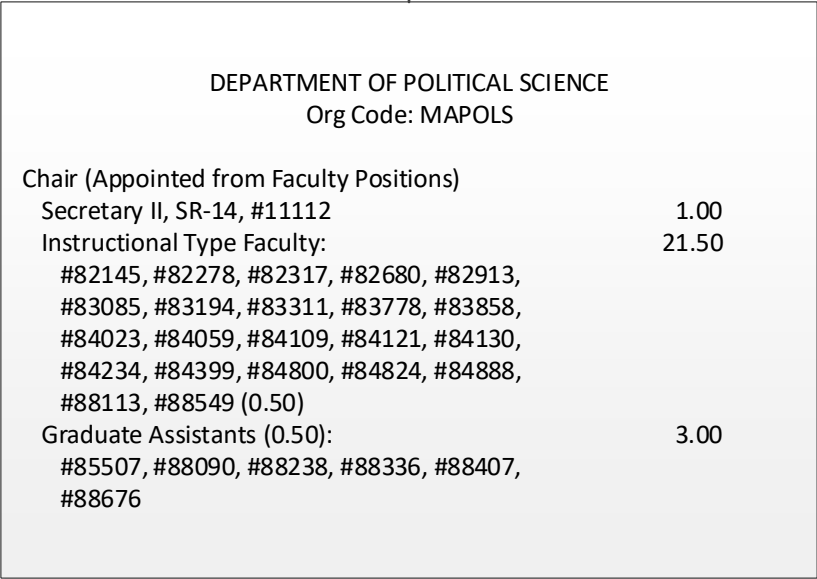


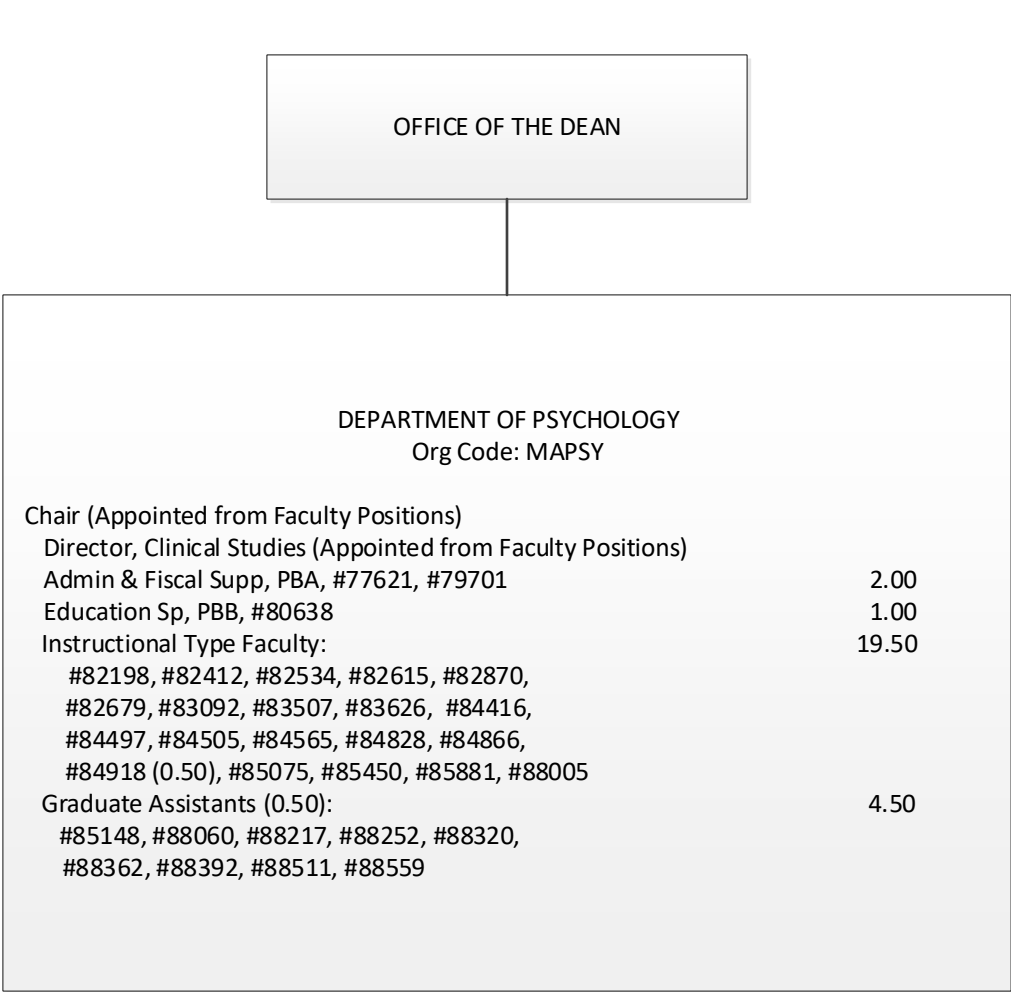












STATE OF HAWAII
UNIVERSITY OF HAWAII
UNIVERSITY OF HAWAII AT MANOA
OFFICE OF THE PROVOST
COLLEGE OF SOCIAL SCIENCES
DEPARTMENT OF PSYCHOLOGY
ORGANIZATIONAL CHART
CHART IV-G

