

STATE OF HAWAI'I
UNIVERSITY OF HAWAI'I
UNIVERSITY OF HAWAI'I AT MĀNOA
OFFICE OF THE VICE PROVOST
FOR STUDENT SUCCESS

POSITION ORGANIZATION CHART
(OVPSS)

PC=President's Cabinet
MC=Mānoa Cabinet

DEPARTMENT TOTAL:	PERM	TEMP
General Funds:	115.00	3.00
Special Funds (B):	99.00	--
Revolving Funds (W):	14.00	--

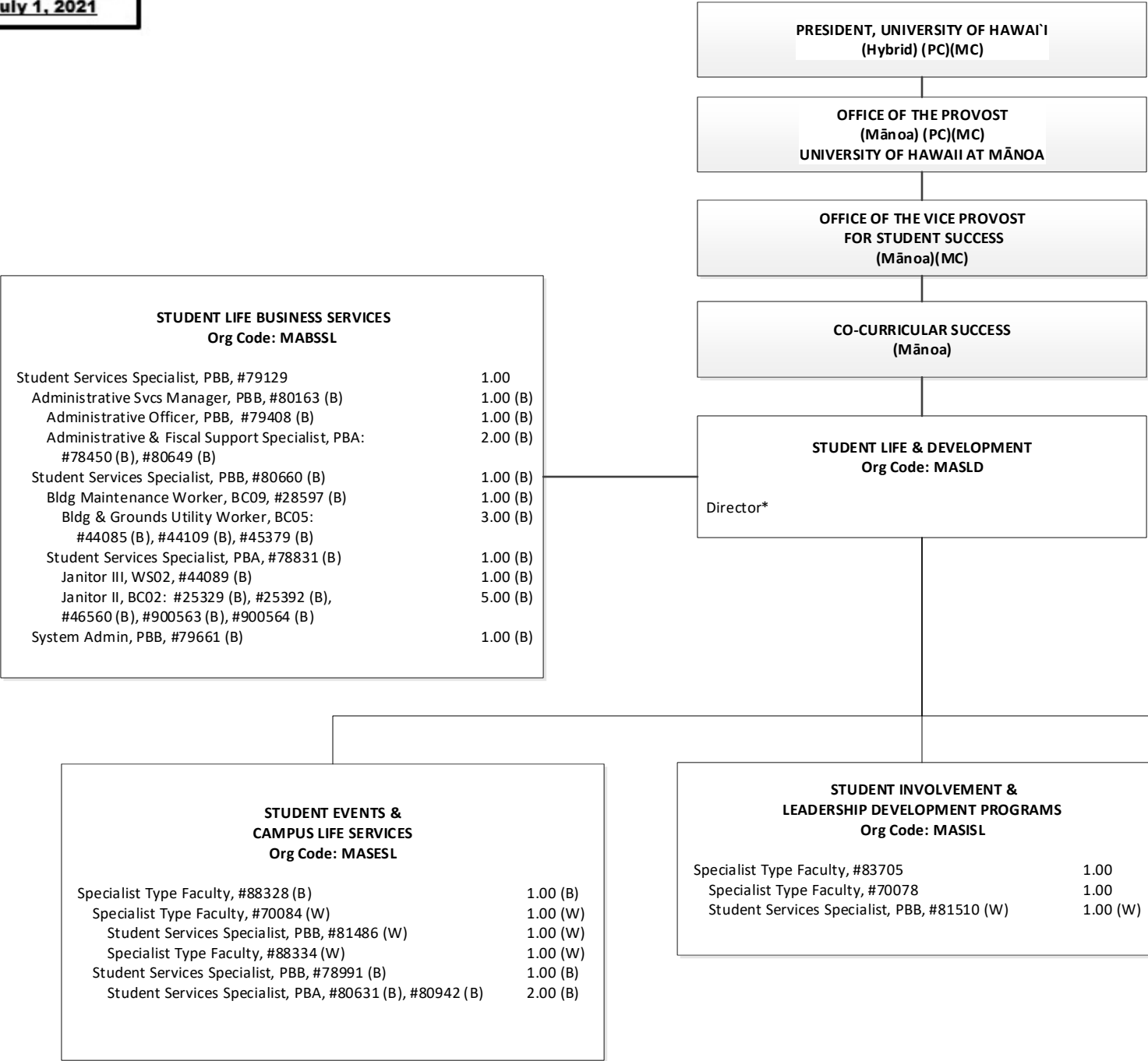
1\ #89309 in MAVCS also serves as Dean of Students and oversees Student Co-Curricular Success.
2\ Collaborate with other equity related programs at the campus level.
3\ Onboarding functions within Student Co-Curricular Success, and Commencement functions within Student Academic Success, with positions to be established when budgetpermits.
Positions to be redescribed, as appropriate

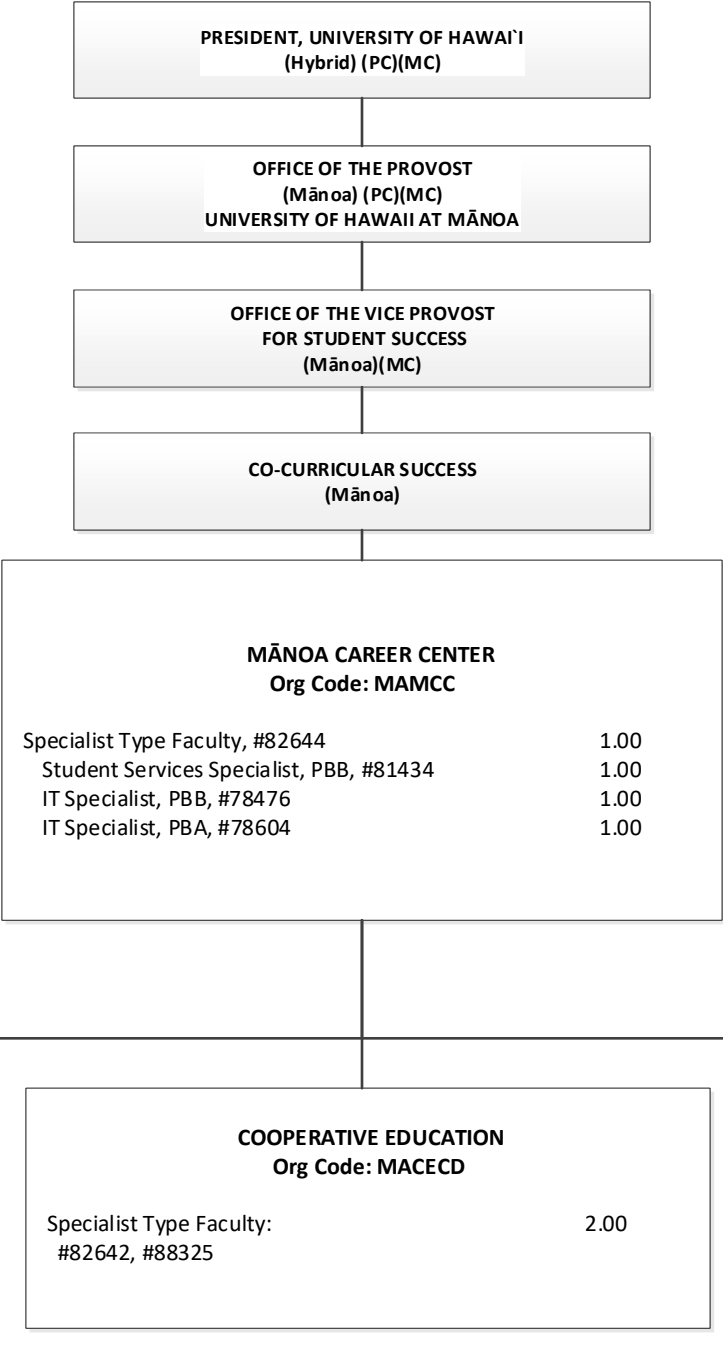
CHART TOTAL:	PERM	TEMP
General Funds:	13.00	--

STATE OF HAWAI'I
UNIVERSITY OF HAWAI'I
UNIVERSITY OF HAWAI'I AT MĀNOA
OFFICE OF THE VICE PROVOST FOR
STUDENT SUCCESS
CO-CURRICULAR SUCCESS
STUDENT LIFE & DEVELOPMENT

POSITION ORGANIZATION CHART (OVPSS-A)

PC=President's Cabinet
MC=Mānoa Cabinet





STATE OF HAWAI'I
UNIVERSITY OF HAWAI'I
UNIVERSITY OF HAWAI'I AT MĀNOA
OFFICE OF THE VICE PROVOST FOR
STUDENT SUCCESS
CO-CURRICULAR SUCCESS
UNIVERSITY HEALTH SERVICES

POSITION ORGANIZATION CHART (OVPSS-C)

PC=President's Cabinet
MC=Mānoa Cabinet



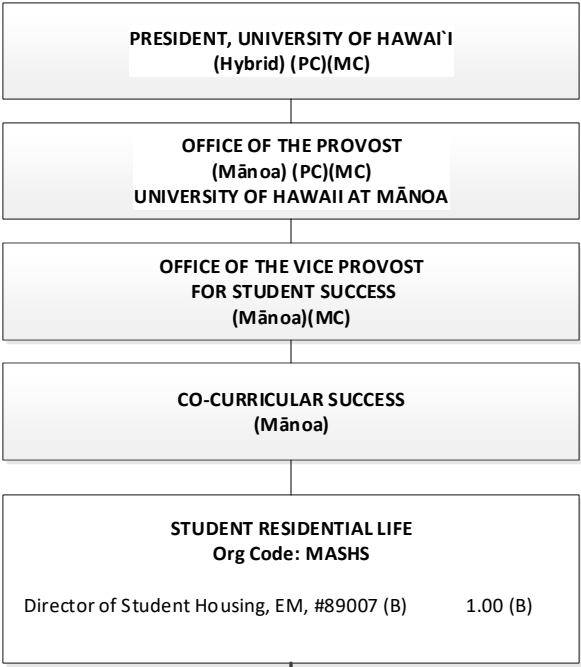
Positions to be redescribed as appropriate

STATE OF HAWAI'I
UNIVERSITY OF HAWAI'I
UNIVERSITY OF HAWAI'I AT MĀNOA
OFFICE OF THE VICE PROVOST FOR
STUDENT SUCCESS
CO-CURRICULAR SUCCESS
STUDENT RESIDENTIAL LIFE

POSITION ORGANIZATION CHART (OVPSS-D)

PC=President's Cabinet
MC=Mānoa Cabinet

OPERATIONS Org Code: MAOPSH		
Auxiliary & Facilities Services Manager, PBB, #80629 (B)	1.00 (B)	
Auxiliary & Facilities Services Officer, PBA, #78141 (B)	1.00 (B)	
Auxiliary & Facilities Services Officer, PBA, #81942 (B)	1.00 (B)	
Registered Architect, PBB, #77005 (B)	1.00 (B)	
MAINTENANCE STAFF:		
Auxiliary & Facilities Services Officer, PBB, #79641 (B)	1.00 (B) 1\	
Building Maintenance Supervisor I, F109, #900548 (B)	1.00 (B)	
Building Maintenance Worker I, BC09: #13578 (B), #31242 (B), #31245 (B), #110585 (B)	4.00 (B)	
#900513, #900514	2.00	
Plumber I, BC10, #900603 (B)	1.00 (B)	
Electrician I, BC10, #900604 (B)	1.00 (B)	
CUSTODIAL & GROUNDS STAFF:		
Auxiliary & Facilities Services Officer, #99075F (B)	1.00 (B) 1\	
Janitor III, WS02, #900850 (B), #900851 (B)	2.00 (B)	
Janitor II, BC02: #900852 (B), #900853 (B), #900854 (B), #900855 (B), #900856 (B), #900857 (B), #900858 (B), #900859 (B), #900860 (B), #900861 (B), #900862 (B), #900863 (B), #900864 (B), #900865 (B), #900866 (B), #900867 (B)	16.00 (B)	
Groundskeeper II, WS02, #24251 (B)	1.00 (B)	
Groundskeeper I, BC02, #31246 (B)	1.00 (B)	
OPERATIONS SUPPORT:		
Environmental & Health Safety Sp, PBA, #81680 (B)	1.00 (B)	
General Laborer II, BC-03: #900918 (B), #900919 (B), #900920 (B), #900921 (B), #900922 (B), #900923 (B)	6.00 (B)	



ADMINISTRATION Org Code: MAADSH		
Administrative Svcs Mgr, PBB, #81612 (B)	1.00 (B)	
FISCAL:		
Fiscal Specialist, Senior, PBB, #80193 (B)	1.00 (B)	
Fiscal Specialist, PBB, #77029 (B)	1.00 (B)	
Cashier I, SR10, #28336 (B)	1.00 (B)	
Fiscal Specialist, PBB, #80298 (B)	1.00 (B)	
Office Assistant IV, SR10, #18701 (B)	1.00 (B)	
ASSIGNMENTS:		
Administrative Officer, PBB, #79170 (B)	1.00 (B)	
Student Services Specialist, PBA, #78732	1.00	
Student Services Specialist, PBA: #79330 (B), #79885 (B)	2.00 (B)	
CONFERENCES:		
Student Services Specialist, PBB, #80219 (B)	1.00 (B)	
PERSONNEL:		
Human Resources Sp, PBB, #81103 (B)	1.00 (B)	
Human Resources Sp, PBB, #78729	1.00	
INFORMATION TECHNOLOGY:		
IT Specialist, PBB, #78311 (B), #81361 (B)	2.00 (B)	
IT Specialist, PBA, #77097 (B)	1.00 (B)	

RESIDENTIAL LIFE Org Code: MARLSH		
Residence Life Mgr, PBB, #80630 (B)	1.00 (B)	
STUDENT CONDUCT & COMMUNITY STANDARDS:		
Residence Life Specialist, PBB, #81611 (B)	1.00 (B)	
Residence Life Specialist, PBA, #80598 (B)	1.00 (B)	
RESIDENTIAL AREAS:		
Residence Life Specialist, PBB: #80594 (B), #80597 (B), #80825 (B)	3.00 (B)	
Office Assistant III, SR08: #23582 (B), #28545 (B)	2.00 (B)	
Residence Life Specialist, PBA: #80924 (B), #80764 (B)	2.00 (B)	
HALL STAFF:		
Residence Life Specialist, PBA: #78542 (B), #78728 (B), #78959 (B), #78960 (B), #78961 (B), #78962 (B), #80595 (B)	7.00 (B)	
#78730, #78731	2.00	

1\ Pending establishment: Auxiliary & Facilities Services Officer, #79641, #99075F
Positions to be redescribed, as appropriate

CHART TOTAL:	PERM	TEMP
General Funds:	6.00	--
Special Funds (B):	72.00	--

STATE OF HAWAI'I
UNIVERSITY OF HAWAI'I
UNIVERSITY OF HAWAI'I AT MĀNOA
OFFICE OF THE VICE PROVOST FOR
STUDENT SUCCESS
CO-CURRICULAR SUCCESS
COUNSELING & STUDENT DEVELOPMENT
STUDENT CONDUCT
CHILDREN'S CENTER

POSITION ORGANIZATION CHART (OVPSS-E)

PC=President's Cabinet
MC=Mānoa Cabinet



Positions to be redescribed, as appropriate

CHART TOTAL:	PERM	TEMP
General Funds:	17.50	3.00
Special Funds (B):	4.00	--

PRESIDENT, UNIVERSITY OF HAWAI'I
(Hybrid) (PC)(MC)

OFFICE OF THE VICE PROVOST
FOR STUDENT SUCCESS
(Mānoa)(MC)

STATE OF HAWAI'I
UNIVERSITY OF HAWAI'I
UNIVERSITY OF HAWAI'I AT MĀNOA
OFFICE OF THE VICE PROVOST FOR
STUDENT SUCCESS
STUDENT DIVERSITY AND INCLUSION

POSITION ORGANIZATION CHART (OVPSS-F)

PC=President's Cabinet
MC=Mānoa Cabinet

STUDENT DIVERSITY AND INCLUSION 1\
Org Code: MASEED

Assistant Vice Chancellor, EM, #89479	1.00
Fiscal Specialist, PBB: #78525, #81088	2.00
Specialist Type Faculty, #70069, #82594	2.00
Educational Specialist, PBB, #81063	1.00
Specialist Type Faculty (Graduate Professional Access Program), #82637	1.00
Specialist Type Faculty (Health Careers Opportunities Program), #70071	1.00

KOKUA
Org Code: MAKOKU

Program Manager, PBC, #80666	1.00
Administrative Officer, PBB, #77032	1.00
Educational Specialist, PBB: #78262, #80608, #80636, #81566	4.00
Educational Specialist, PBA, #81102	1.00

OFFICE OF MULTICULTURAL STUDENT SERVICES
Org Code: MAMULT

Program Manager, PBB, #80517	1.00
Student Services Sp, PBB: #81799, #81801	2.00
Office Assistant III, SR08, #43052	1.00

COLLEGE OPPORTUNITIES PROGRAM
Org Code: MACOP

Specialist Type Faculty, #83548	1.00
Student Services Sp, PBB, #80606	1.00
Student Services Sp, PBA, #78538	1.00
Office Assistant IV, SR10, #23086	1.00

FEDERAL & STATE GRANTED PROGRAMS
Org Code: MAFSGP

Mānoa Educational Talent Search (METS)
Hawai'i Educational Talent Search (HETS)
Child Care Access Means Parents in School
GEAR UP Mānoa
GEAR UP Waipahu
Program for After-School Literacy Support (PALS)/
Place-based Learning and Community
Engagement in School (PLACES)
Student Support Services

WOMEN'S CENTER
Org Code: MAWC

Specialist Type Faculty: #84581, #88333	2.00
---	------

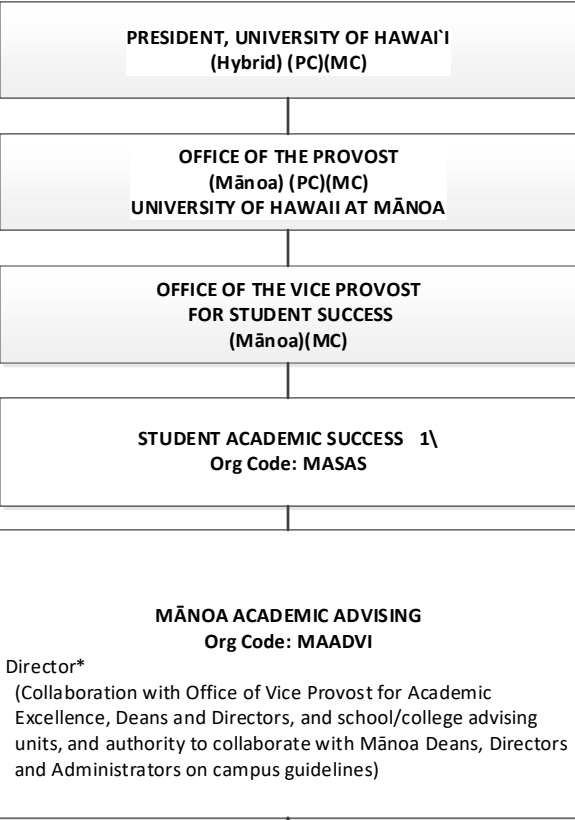
LGBTQ+
Org Code: MALGBT

Specialist Type Faculty, #70074	1.00
---------------------------------	------

VETERAN STUDENT SERVICES
Org Code: MAVTSS

CHART TOTAL:	PERM	TEMP
General Funds:	26.00	--

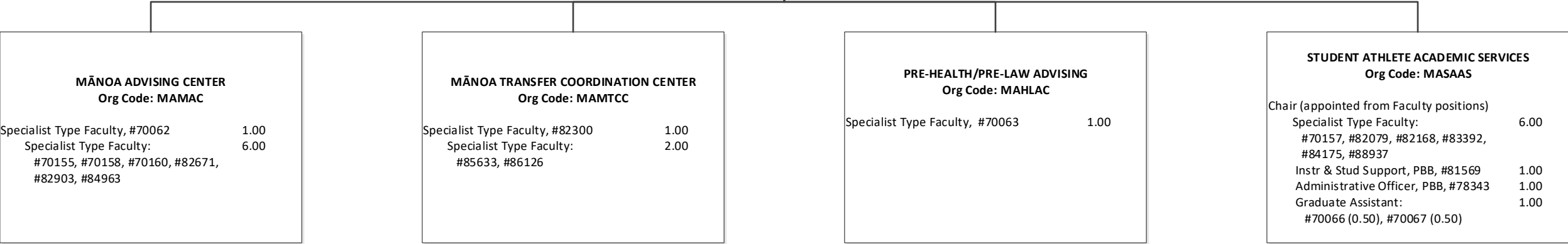
1\ Collaborate with other equity related programs at the campus level.
Positions to be redescribed, as appropriate



STATE OF HAWAI'I
UNIVERSITY OF HAWAI'I
UNIVERSITY OF HAWAI'I AT MĀNOA
OFFICE OF THE VICE PROVOST FOR
STUDENT SUCCESS
STUDENT ACADEMIC SUCCESS

POSITION ORGANIZATION CHART (OVPSS-G(a))

PC=President's Cabinet
MC=Mānoa Cabinet



* Director, to be established when budget permits
1\ Onboarding functions within Student Co-Curricular Success, and Commencement functions within Student Academic Success, with positions to be established when budget permits.
Positions to be redescribed, as appropriate

CHART TOTAL:	PERM	TEMP
General Funds:	20.00	--