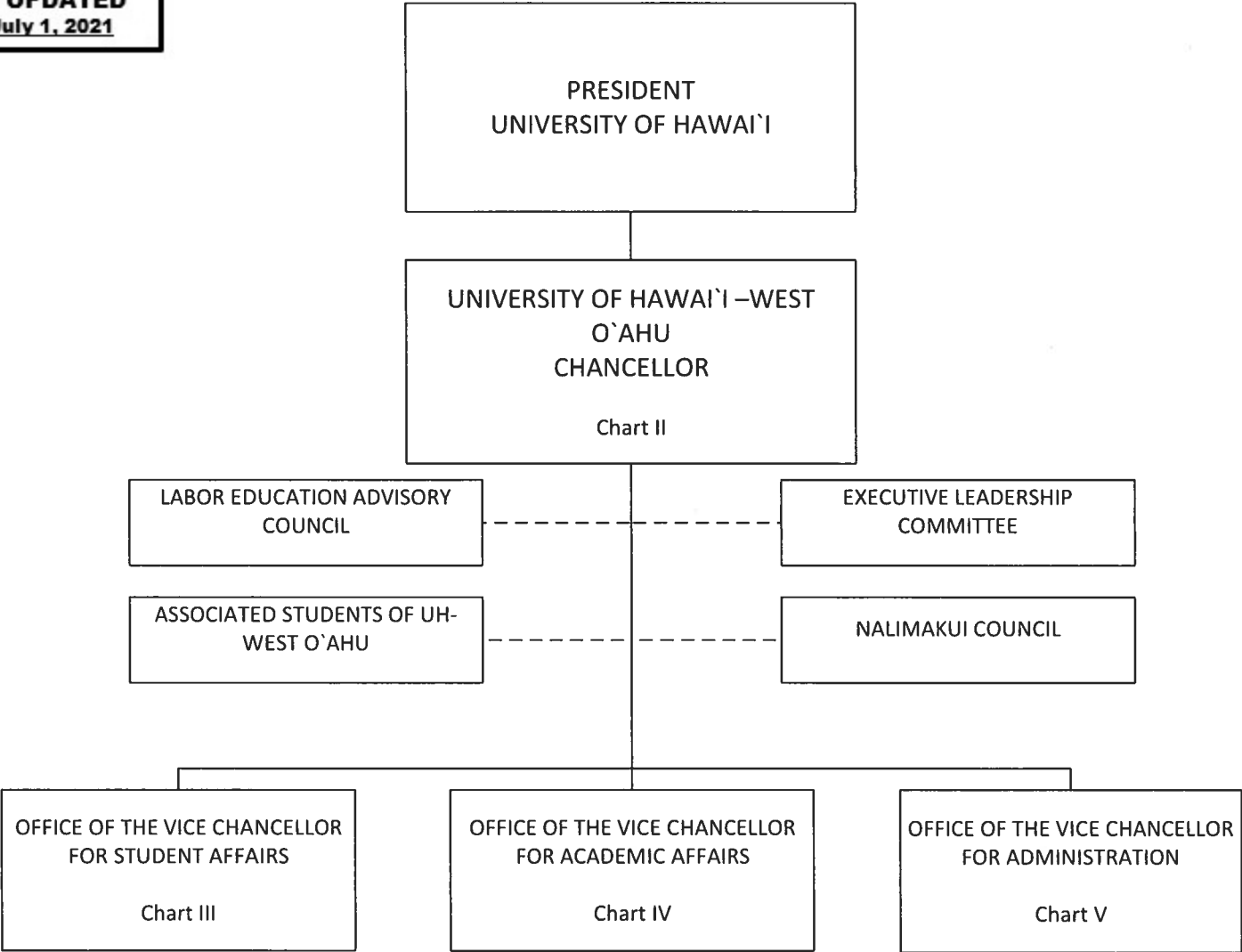


STATE OF HAWAI'I
UNIVERSITY OF HAWAI'I
UNIVERSITY OF HAWAI'I – WEST O`AHU

POSITION ORGANIZATION CHART
CHART I



----- Dotted lines denotes advisory role

STATE OF HAWAI'I
UNIVERSITY OF HAWAI'I
UNIVERSITY OF HAWAI'I – WEST O'AHU
OFFICE OF THE CHANCELLOR

POSITION ORGANIZATION CHART
CHART II

General Funds 10.00
++ Temporary Federal Funds 1.00

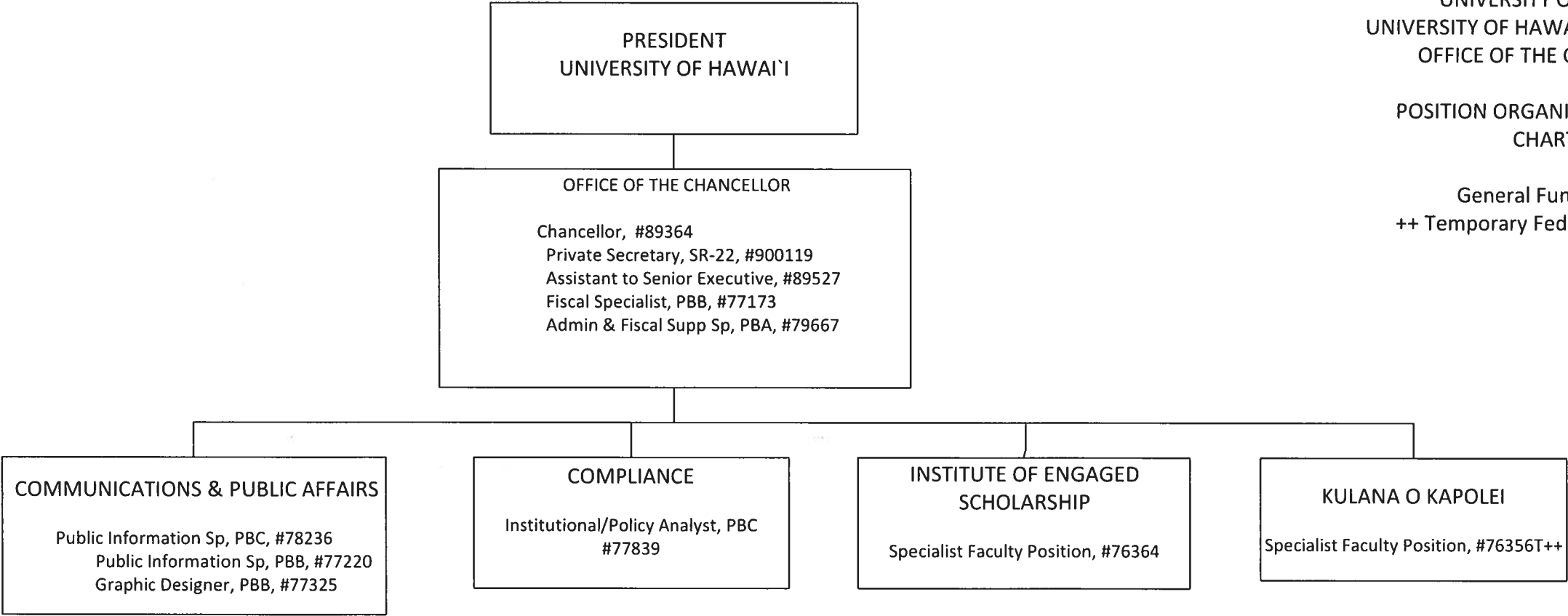


CHART UPDATED
DATE: July 1, 2021

OFFICE OF THE VICE CHANCELLOR FOR STUDENT AFFAIRS

Vice Chancellor, #89292
Instruc & Student Sup Sp, PBA, #78484

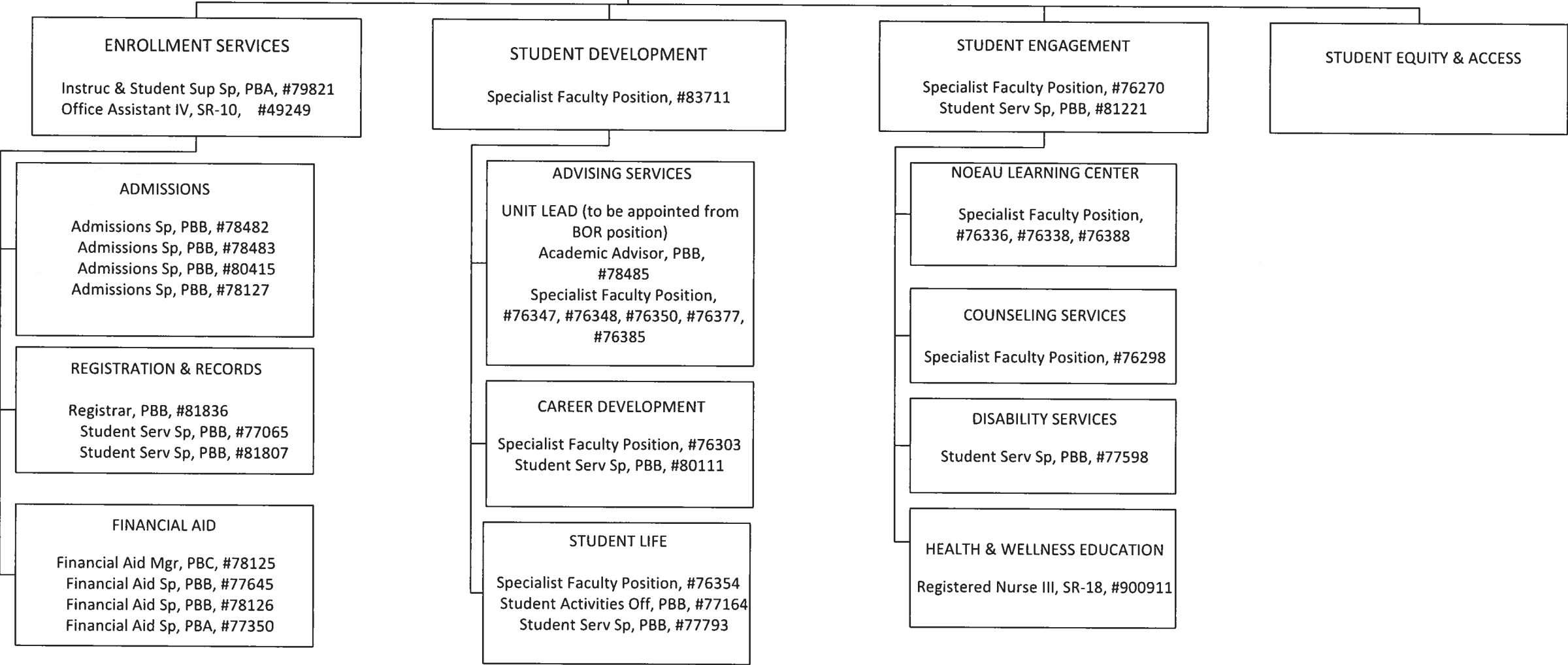
DIVISIONAL & INSTITUTIONAL SUPPORT

UNIT LEAD (to be appointed from BOR position)
Student Serv Sp, PBB, #81144
Specialist Faculty Position, #76346

STATE OF HAWAI'I
UNIVERSITY OF HAWAI'I
UNIVERSITY OF HAWAI'I – WEST O'AHU
OFFICE OF THE VICE CHANCELLOR FOR STUDENT AFFAIRS

POSITION ORGANIZATION CHART
CHART III

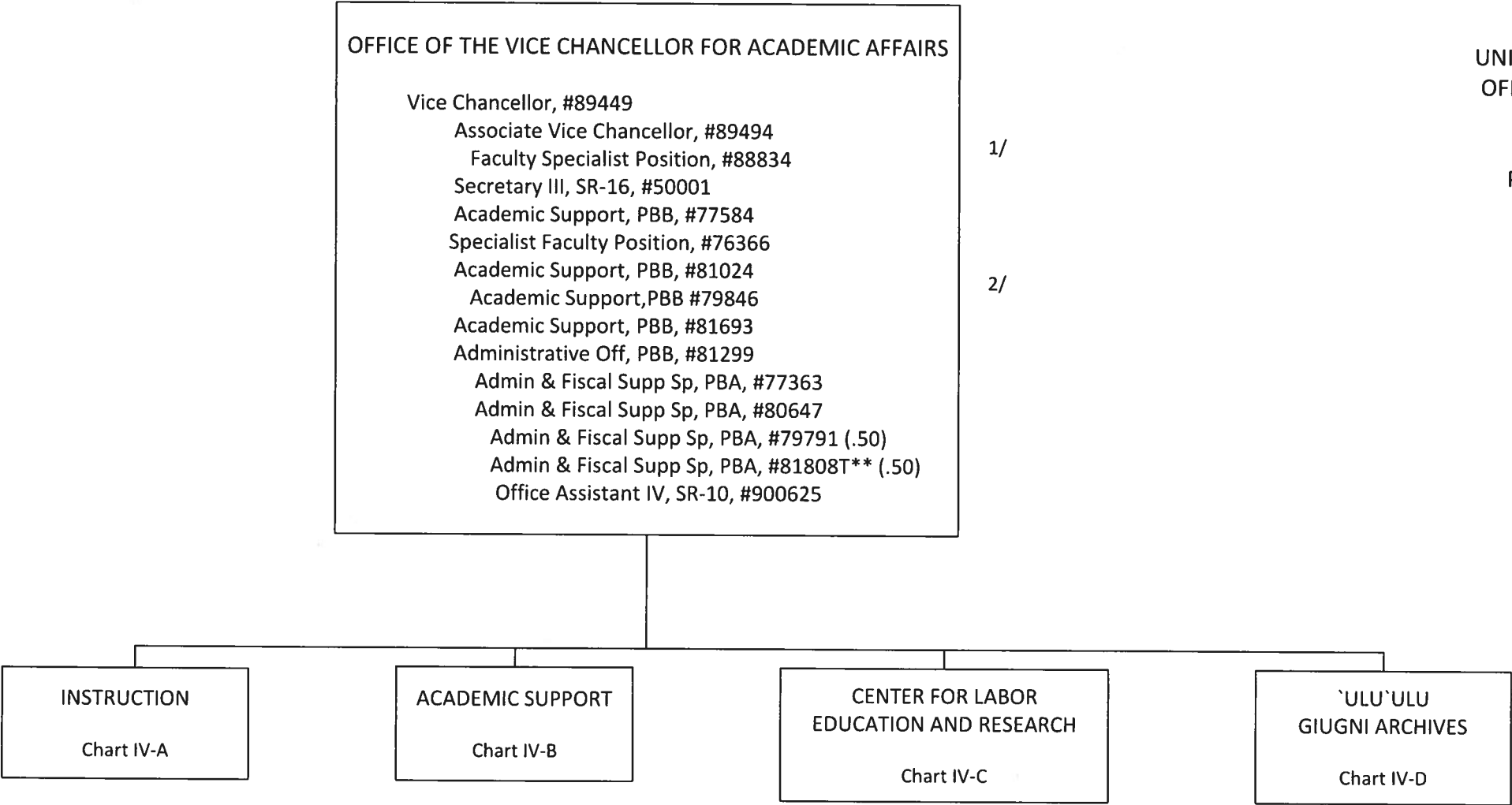
General Funds 37.00



STATE OF HAWAI'I
UNIVERSITY OF HAWAI'I
UNIVERSITY OF HAWAI'I – WEST O`AHU
OFFICE OF THE VICE CHANCELLOR FOR
ACADEMIC AFFAIRS

POSITION ORGANIZATION CHART
CHART IV

General Funds 13.50
**BT General Funds .50

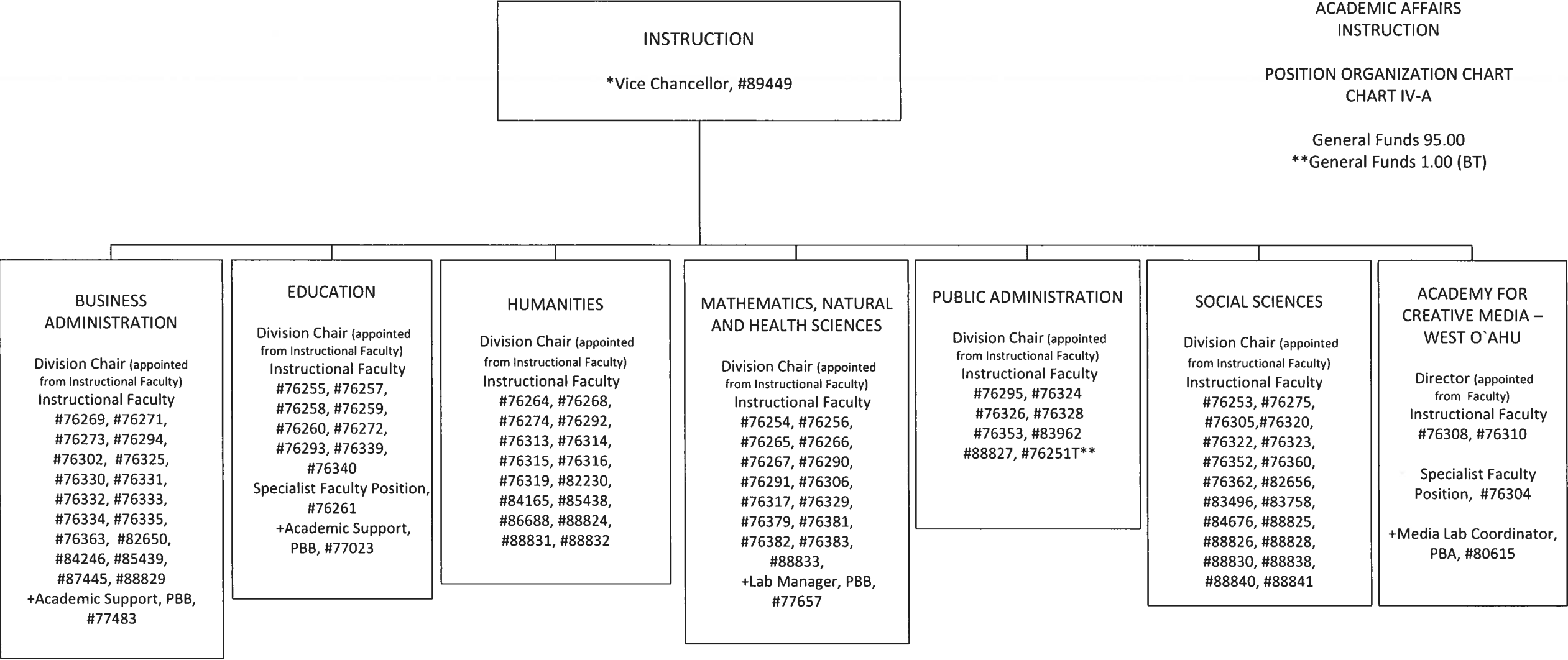


**Budgeted temporary position .50 FTE, Special Funds .50 FTE

1/ Associate Vice Chancellor, #89494 in OVCAA also services as Director of Academic Support
2/ position will be redescribed

POSITION ORGANIZATION CHART
CHART IV-A

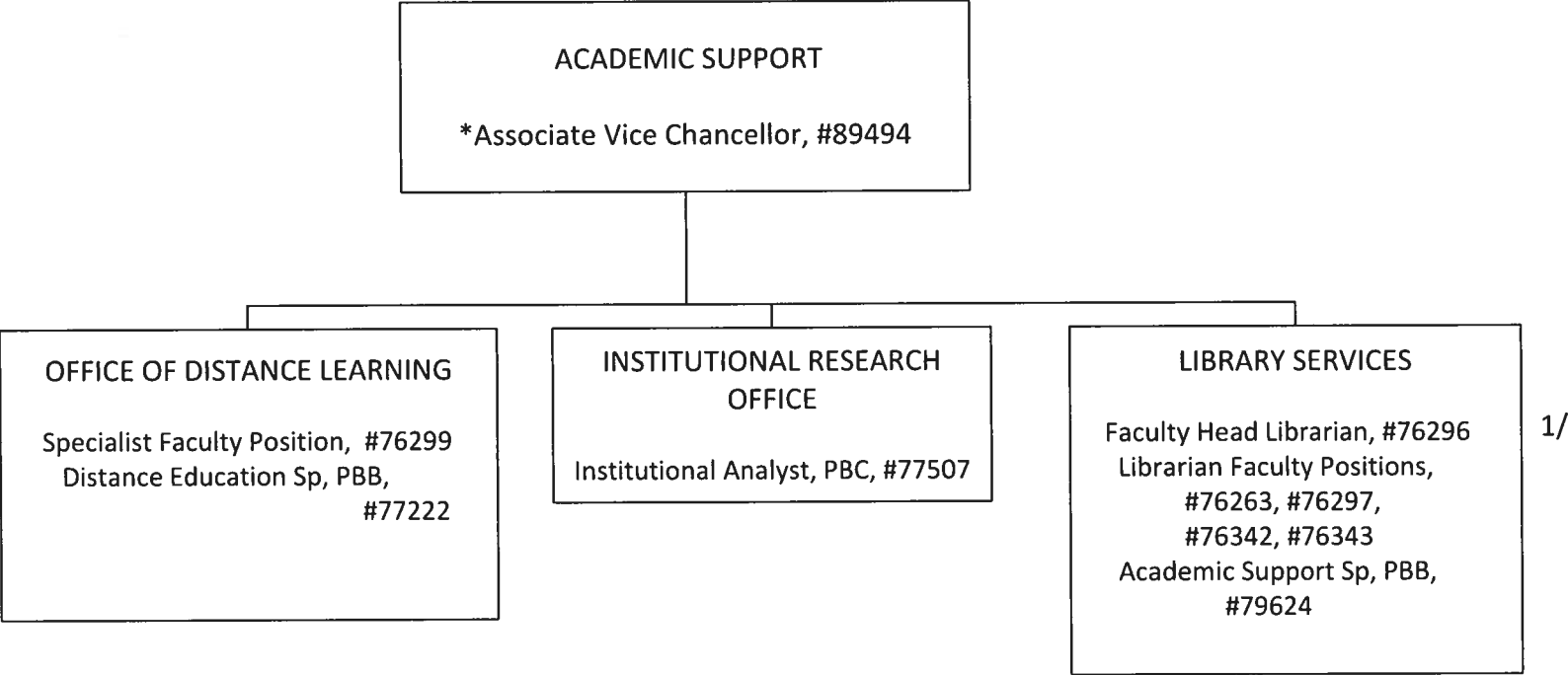
General Funds 95.00
**General Funds 1.00 (BT)



*Position count not included on this page

+ Reports to Division Chair, Director, or assigned Department Coordinator

Pending establishment: #92800F & #92801F

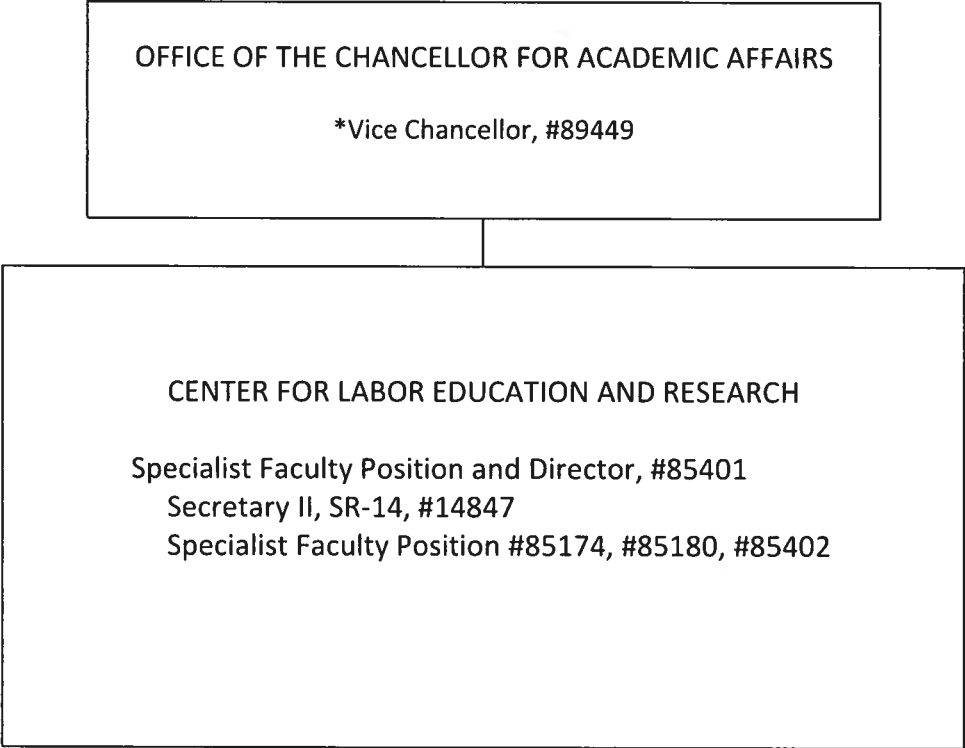


STATE OF HAWAI'I
UNIVERSITY OF HAWAI'I
UNIVERSITY OF HAWAI'I – WEST O`AHU
OFFICE OF THE VICE CHANCELLOR FOR
ACADEMIC AFFAIRS
ACADEMIC SUPPORT

POSITION ORGANIZATION CHART
CHART IV-B

General Funds 9.00

*Position count not included on this page
1/ #76296 filled with temporary librarian, Interim Head Librarian appointed from librarian faculty position



STATE OF HAWAI‘I
UNIVERSITY OF HAWAI‘I
UNIVERSITY OF HAWAI‘I – WEST O‘AHU
OFFICE OF THE VICE CHANCELLOR FOR
ACADEMIC AFFAIRS
CENTER FOR LABOR EDUCATION AND
RESEARCH

POSITION ORGANIZATION CHART
CHART IV-C

General Funds 5.00

*Position count not included on this page

OFFICE OF THE VICE CHANCELLOR FOR ACADEMIC AFFAIRS

*Vice Chancellor
#89449

'ULU'ULU
GIUGNI ARCHIVES

Educational Spec, PBB, #77377
Educational Spec, PBB, #77651
Educational Spec, PBB, #77678
Media Spec, PBB, #77600
Educational Spec, PBB, #77644

STATE OF HAWAI'I
UNIVERSITY OF HAWAI'I
UNIVERSITY OF HAWAI'I – WEST O`AHU
OFFICE OF THE VICE CHANCELLOR FOR
ACADEMIC AFFAIRS
'ULU'ULU
GIUGNI ARCHIVES

POSITION ORGANIZATION CHART
CHART IV-D

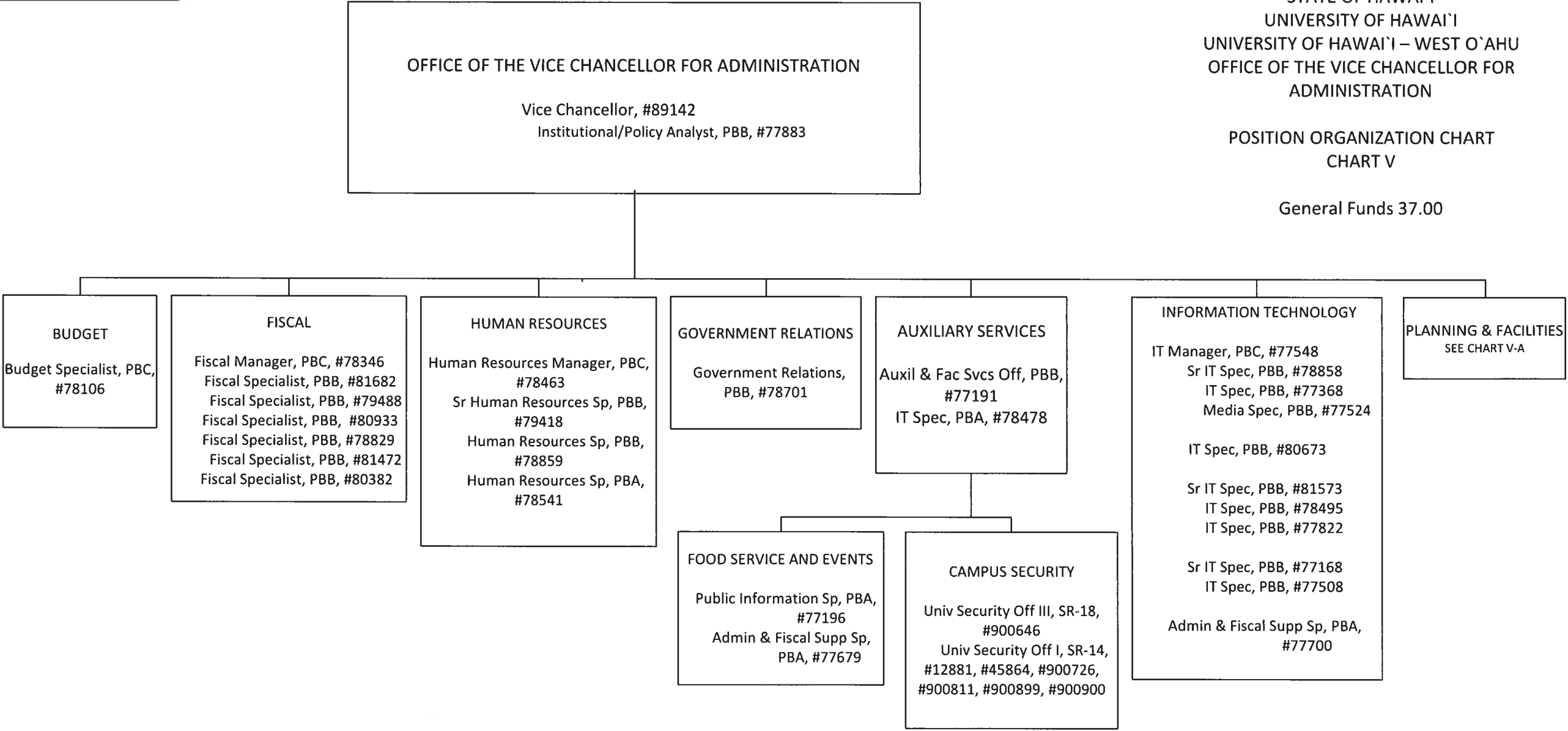
General Funds 5.00

*Position count not included on this page

STATE OF HAWAI'I
UNIVERSITY OF HAWAI'I
UNIVERSITY OF HAWAI'I – WEST O'AHU
OFFICE OF THE VICE CHANCELLOR FOR
ADMINISTRATION

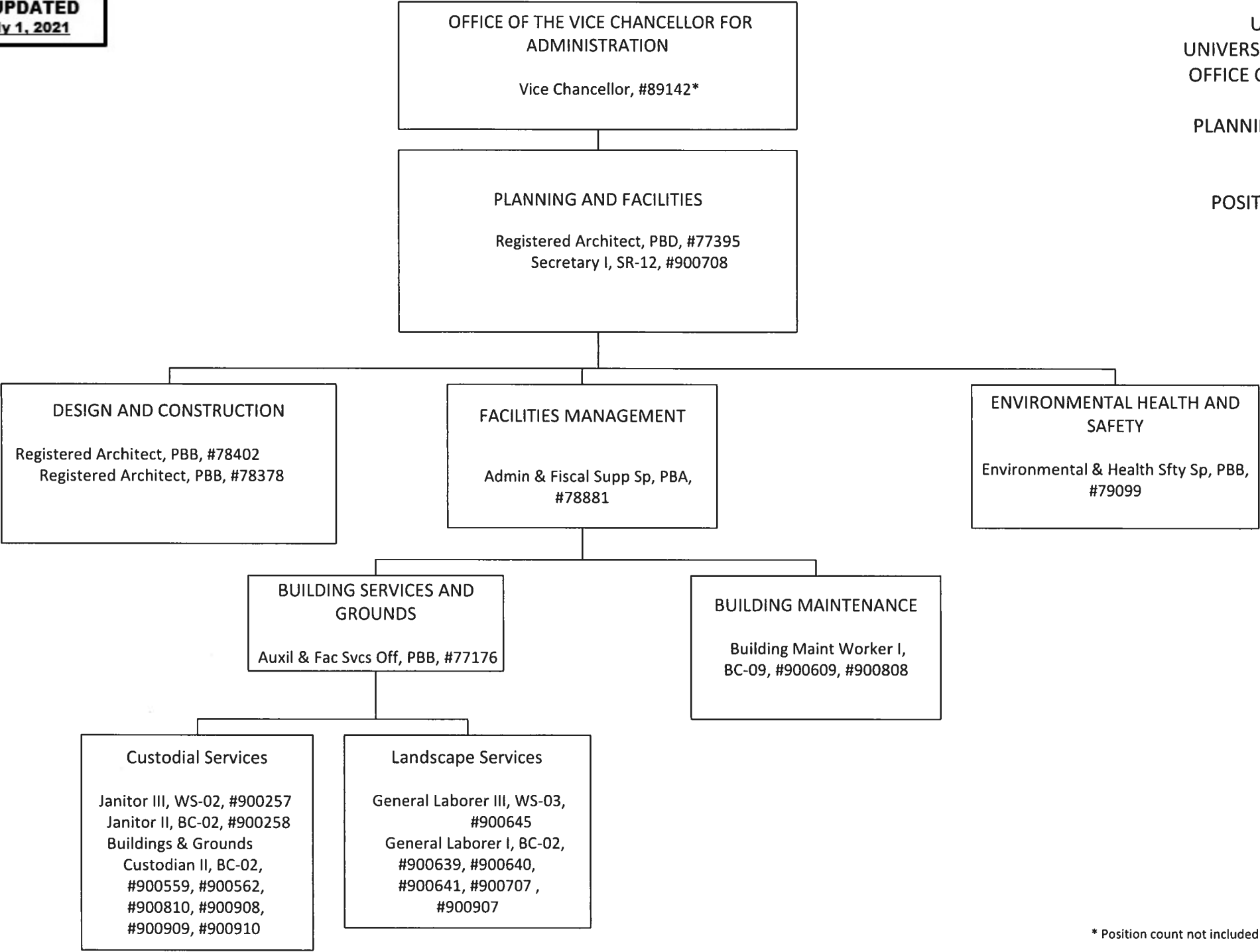
POSITION ORGANIZATION CHART
CHART V

General Funds 37.00



POSITION ORGANIZATION CHART
CHART V-A

General Funds 23.00



* Position count not included on this page

+ Position to be redescribed