

OFFICE OF THE PRESIDENT
UNIVERSITY OF HAWAI'I SYSTEM

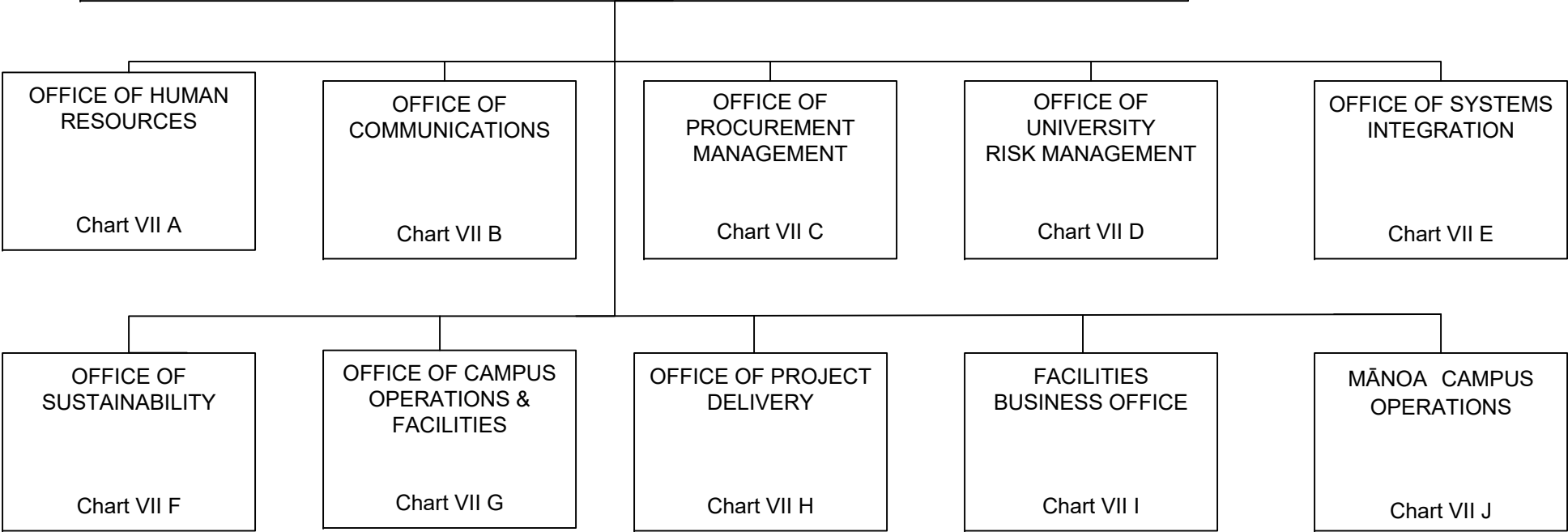
President, University of Hawai'i System89058¹

STATE OF HAWAI'I
UNIVERSITY OF HAWAI'I
SYSTEMWIDE ADMINISTRATION
VICE PRESIDENT FOR ADMINISTRATION

POSITION ORGANIZATION CHART

CHART VII

OFFICE OF THE VICE PRESIDENT FOR ADMINISTRATION				
Vice President for Administration89446				
Associate Vice President for Administration89103				
Project Manager	PBB		80789*	
Institutional/Policy Analyst	PBB		77074	
Institutional/Policy Analyst	PBB		81056	
Administrative Officer	PBB		81367	
Proc/Prop Mgt Sp	PBB		80429(W)	
Director of Planning & Project Development			89153*	



¹ Excluded from position count
² Appropriated but not established, 8 Special Fund (B) positions: 93926F – 93933F
* Positions appropriated to Manoa, reflected organizationally on this chart

	Perm
General Fund	5.00 (SW)
General Fund	2.00 (MA)*
Revolving Fund (W)	1.00 (SW)
Special Fund (B)	8.00 (SW) ²

OFFICE OF THE VICE PRESIDENT FOR ADMINISTRATION

Vice President for Administration89446¹

STATE OF HAWAI'I
UNIVERSITY OF HAWAI'I
SYSTEMWIDE ADMINISTRATION
VICE PRESIDENT FOR ADMINISTRATION
OFFICE OF HUMAN RESOURCES

POSITION ORGANIZATION CHART

CHART VII A

OFFICE OF HUMAN RESOURCES

System Director of Human Resources89310
Associate Director of Human Resources89425
Human Resources ManagerPBD77834
Admin & Fiscal Support SpPBA80093

EMPLOYEE SERVICES

COLLECTIVE BARGAINING AND EMPLOYEE RELATIONS

Director of Collective Bargaining
and Employee Relations89173
Labor Relations Officer79848

UNIT A

HR ManagerPBC80092
HR SpecialistPBB78386
HR SpecialistPBB80538
HR SpecialistPBB80384
HR SpecialistPBB80986
HR SpecialistPBB81753

UNIT B

HR ManagerPBC78393
HR SpecialistPBB81200
HR SpecialistPBA78683
HR SpecialistPBB80179
HR SpecialistPBA81834
HR Assistant VSR-1312260

POLICIES & PROCEDURES & CLASSIFICATION

HR ManagerPBC80540

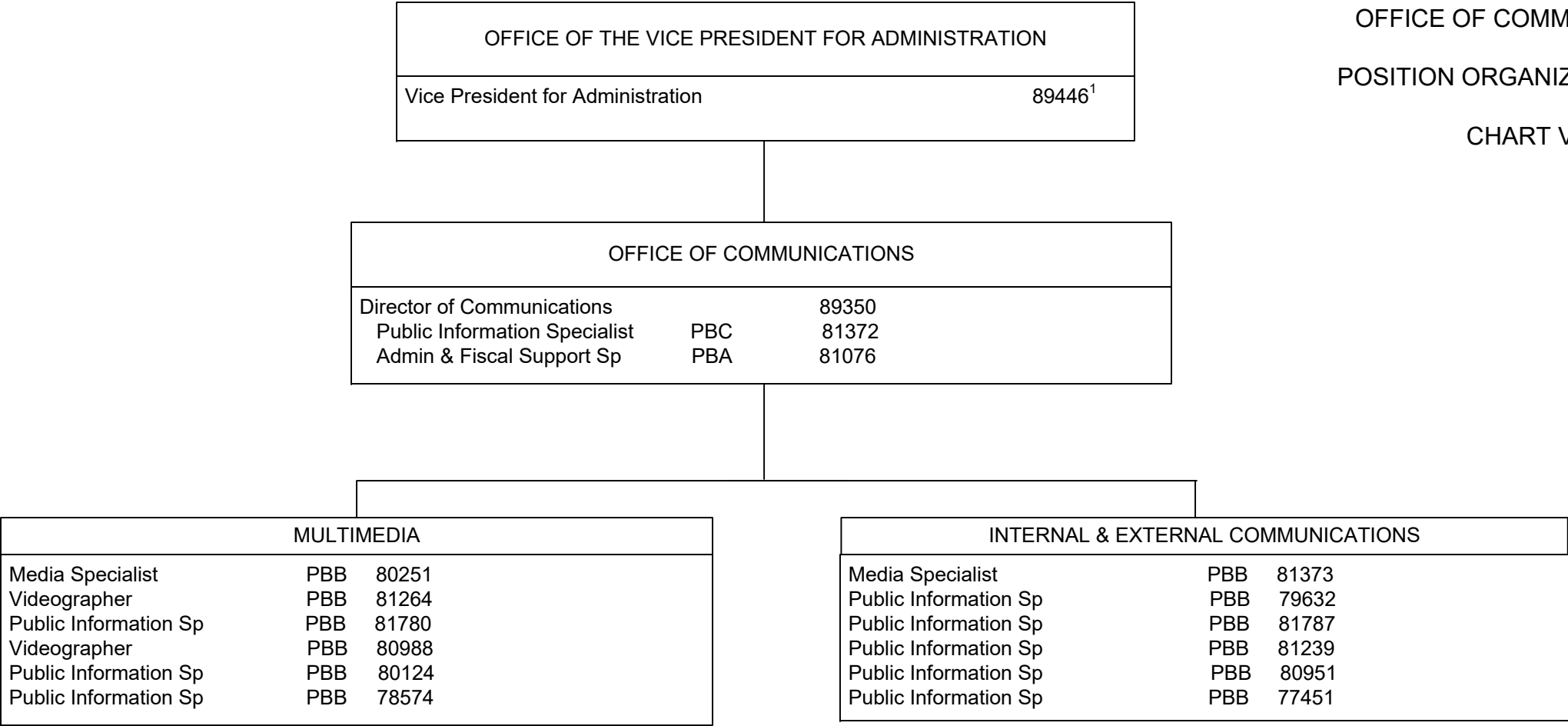
Perm
General Fund 19.00 (SW)

¹ Excluded from position count

STATE OF HAWAI'I
UNIVERSITY OF HAWAI'I
SYSTEMWIDE ADMINISTRATION
VICE PRESIDENT FOR ADMINISTRATION
OFFICE OF COMMUNICATIONS

POSITION ORGANIZATION CHART

CHART VII B

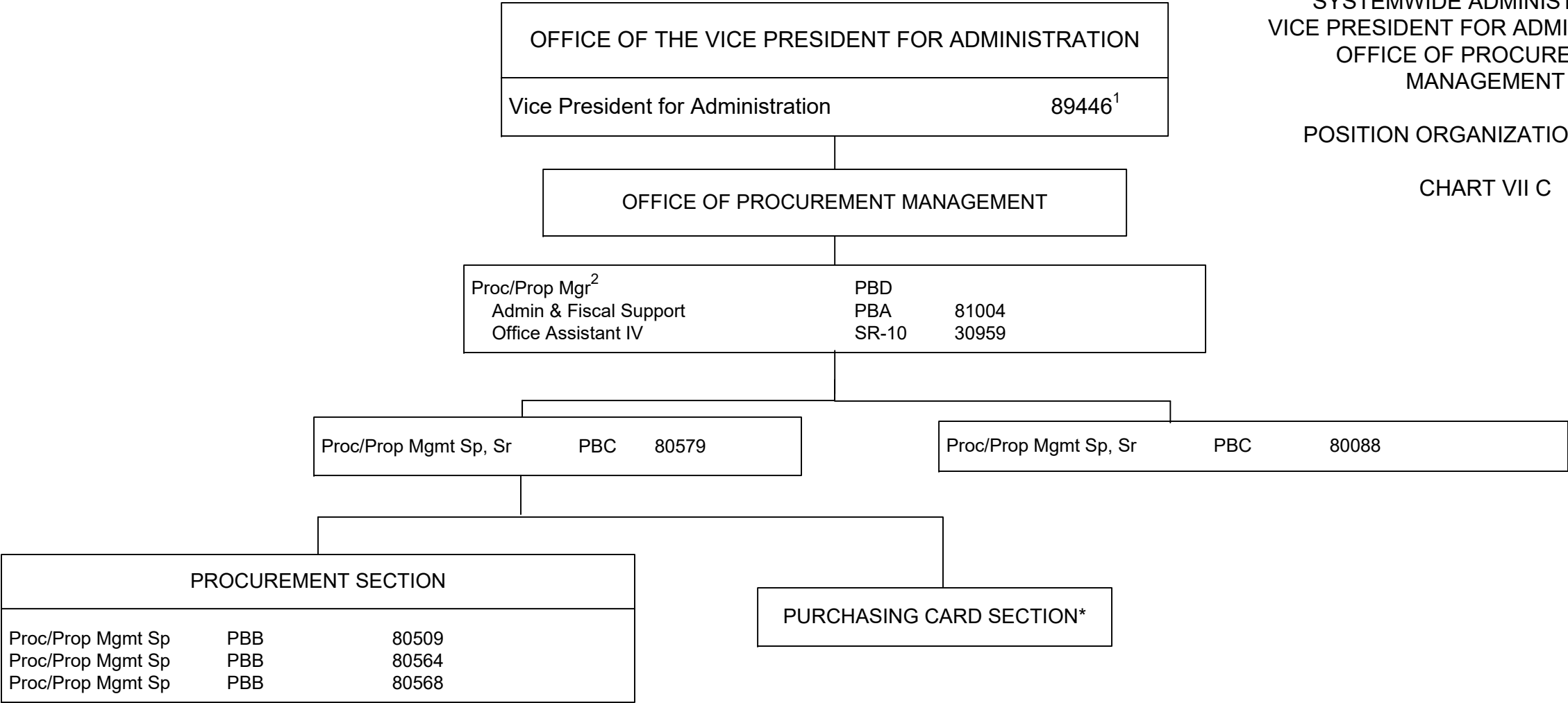


¹ Excluded from position count

STATE OF HAWAI'I
UNIVERSITY OF HAWAI'I
SYSTEMWIDE ADMINISTRATION
VICE PRESIDENT FOR ADMINISTRATION
OFFICE OF PROCUREMENT
MANAGEMENT

POSITION ORGANIZATION CHART

CHART VII C



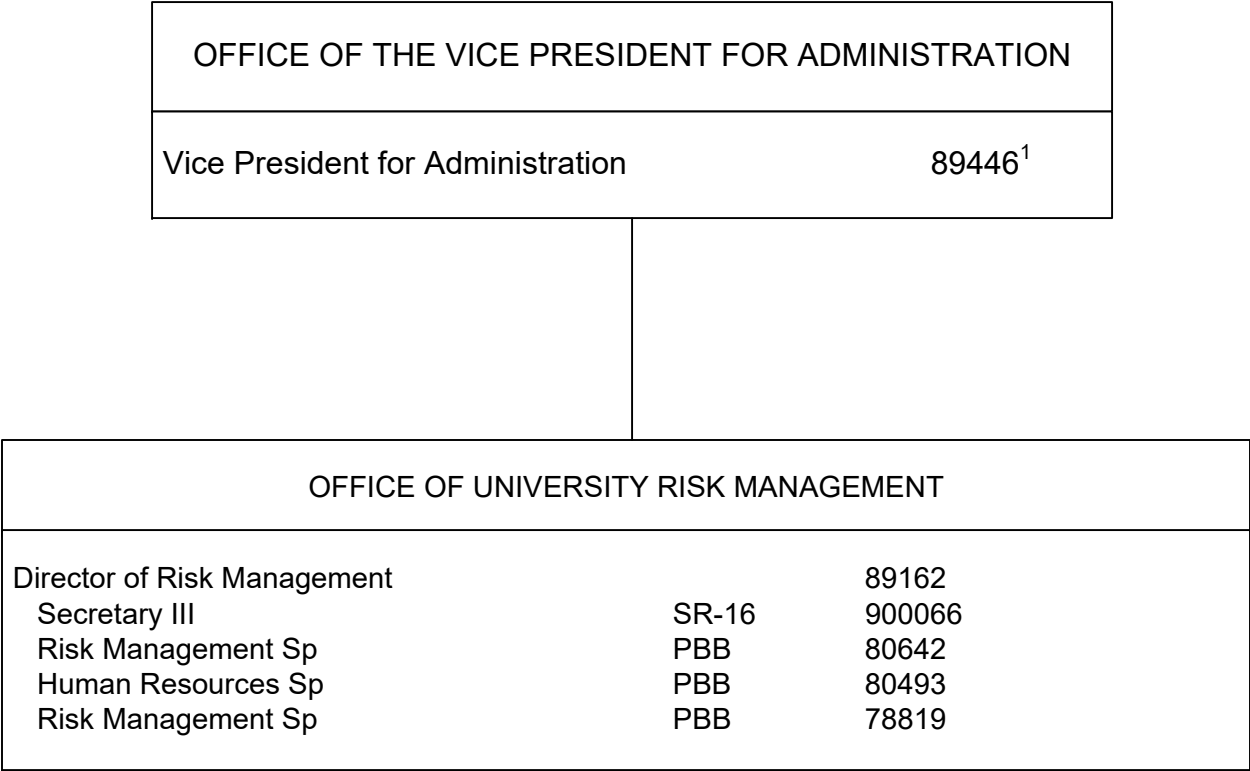
¹ Excluded from position count
² Position was abolished per Act 9, SLH 2020, SB126 CD1
³ Appropriated per HB1600, H.D.1, S.D.2, C.D.1 but not established, Procurement Director 93910F

* Includes temporary positions

STATE OF HAWAI‘I
UNIVERSITY OF HAWAI‘I
SYSTEMWIDE ADMINISTRATION
VICE PRESIDENT FOR ADMINISTRATION
OFFICE OF UNIVERSITY RISK
MANAGEMENT

POSITION ORGANIZATION CHART

CHART VII D

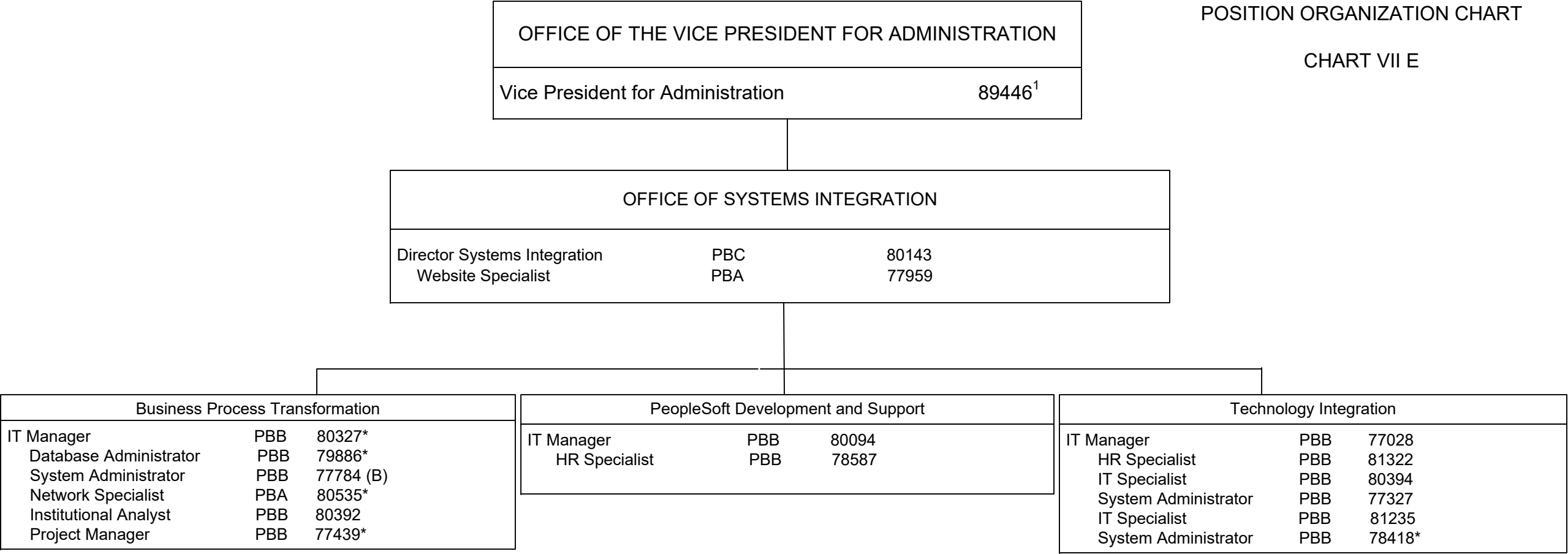


¹ Excluded from position count

STATE OF HAWAI'I
UNIVERSITY OF HAWAI'I
SYSTEMWIDE ADMINISTRATION
VICE PRESIDENT FOR ADMINISTRATION
OFFICE OF SYSTEMS INTEGRATION

POSITION ORGANIZATION CHART

CHART VII E



¹ Excluded from position count
* Positions appropriated to Manoa, reflected organizationally on this chart

	Perm
General Fund	10.00 (SW)
General Fund	5.00 (MA)*
Special Fund (B)	1.00 (SW)

OFFICE OF THE VICE PRESIDENT FOR ADMINISTRATION		
Vice President for Administration		89446 ¹

OFFICE OF SUSTAINABILITY		
Director of Energy Management		89524
Operations Coordinator	PBB	78394
Operations Coordinator	PBA	80991

STATE OF HAWAI'I
UNIVERSITY OF HAWAI'I
SYSTEMWIDE ADMINISTRATION
VICE PRESIDENT FOR ADMINISTRATION
OFFICE OF SUSTAINABILITY

POSITION ORGANIZATION CHART

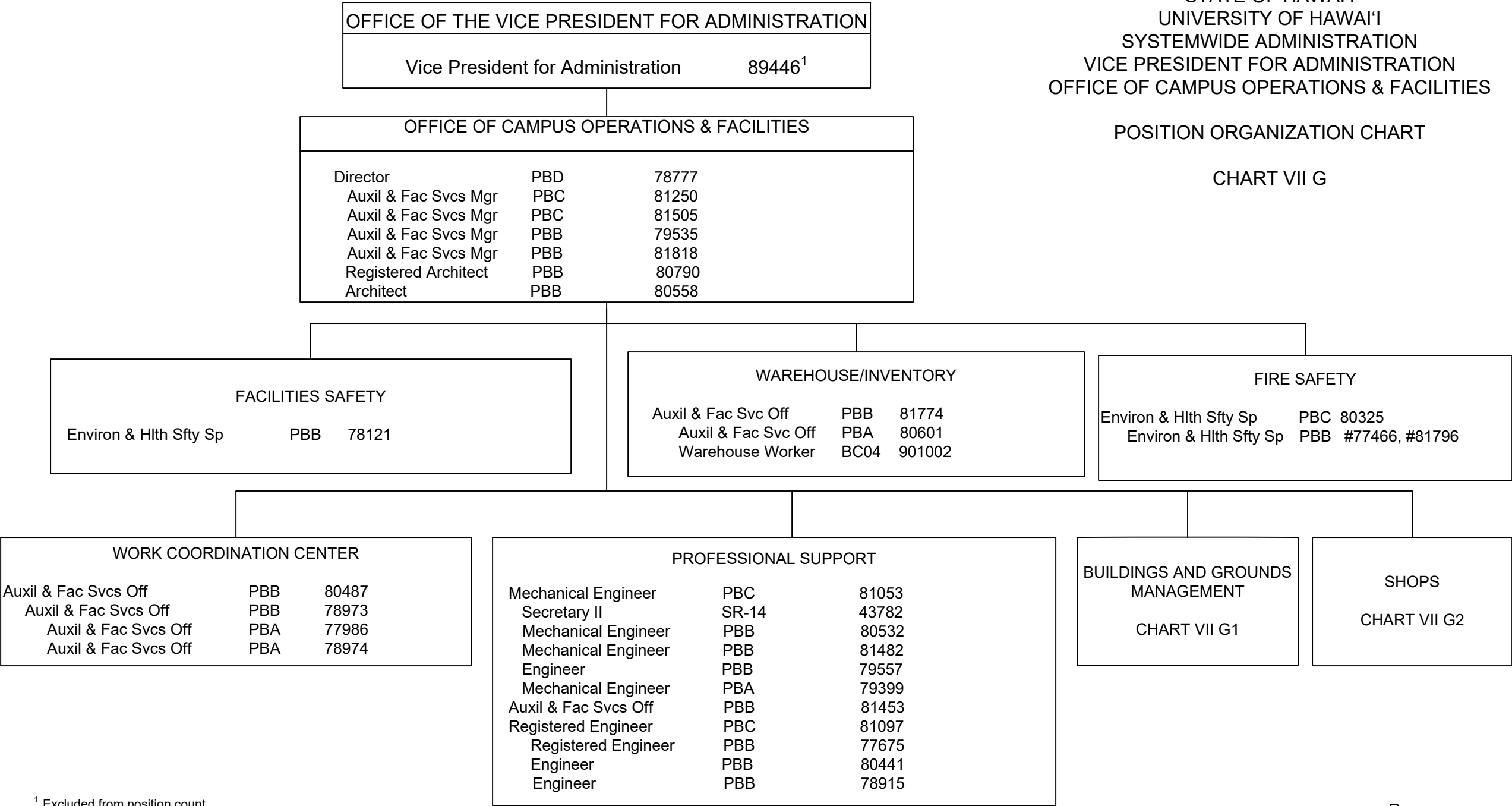
CHART VII F

¹ Excluded from position count

STATE OF HAWAI‘I
UNIVERSITY OF HAWAI‘I
SYSTEMWIDE ADMINISTRATION
VICE PRESIDENT FOR ADMINISTRATION
OFFICE OF CAMPUS OPERATIONS & FACILITIES

POSITION ORGANIZATION CHART

CHART VII G

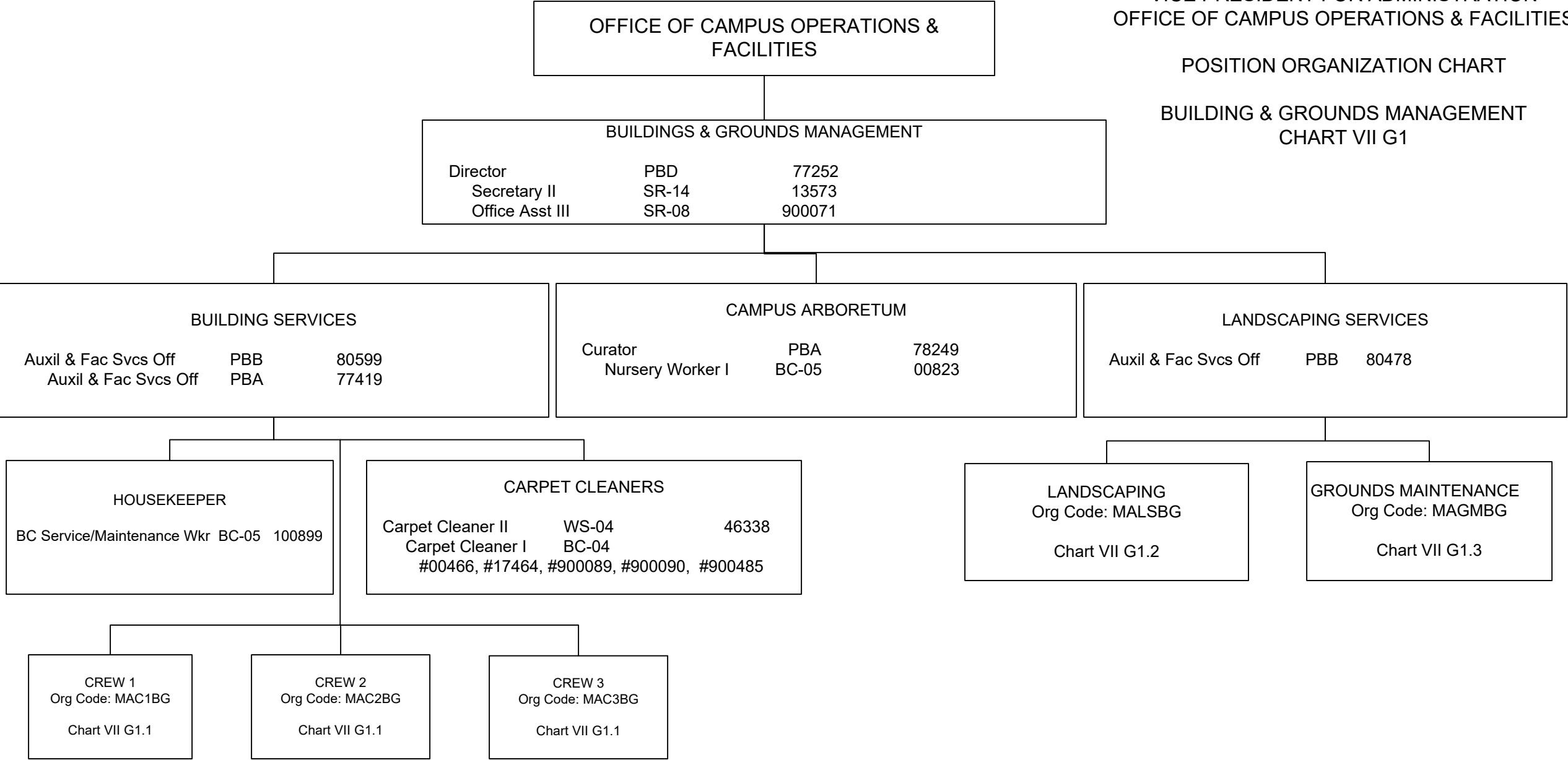


¹ Excluded from position count
* All positions on Chart VII G appropriated to Manoa, reflected organizationally on this chart

STATE OF HAWAI‘I
UNIVERSITY OF HAWAI‘I
SYSTEMWIDE ADMINISTRATION
VICE PRESIDENT FOR ADMINISTRATION
OFFICE OF CAMPUS OPERATIONS & FACILITIES

POSITION ORGANIZATION CHART

BUILDING & GROUNDS MANAGEMENT
CHART VII G1



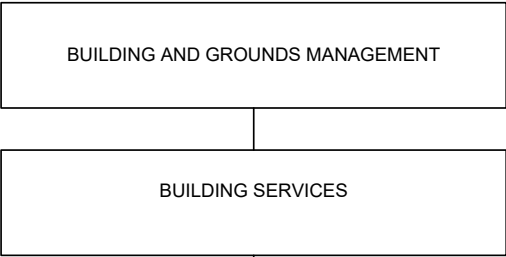
¹ Excluded from position count

* All positions on Chart VII G1 appropriated to Manoa, reflected organizationally on this chart

STATE OF HAWAI'I
UNIVERSITY OF HAWAI'I
SYSTEMWIDE ADMINISTRATION
VICE PRESIDENT FOR ADMINISTRATION
OFFICE OF CAMPUS OPERATIONS & FACILITIES
BUILDING AND GROUNDS MANAGEMENT

POSITION ORGANIZATION CHART

BUILDING SERVICES
CHART VII G1.1



MAKAI Org Code: MAC1BG		
Janitor Supervisor II	F2-02	22325
Janitor III	WS-02	46220
Janitor II	BC-02	#05843, #11991, #13689, #36227, #51275, #110441
Janitor III	WS-02	13516
Janitor II	BC-02	#08060, #9093, #13523, #21629, #900048, #900488
Janitor III	WS-02	27233
Janitor II	BC-02	#11984, #11987, #12912, #21211, #21212, #21214, #111641
Janitor III	WS-02	00457
Janitor II	BC-02	#00459, #12491, #12914, #13698, #22331, #46222
Janitor III	WS-02	51274
Janitor II	BC-02	#08445, #11076, #21213, #27238, #35867, #35869, #51276
Janitor III	WS-02	47536
Janitor II	BC-02	#00449, #08444, #12903, #12908, #13688, #18575, #21633, #27234, #46245

General Fund 48.00 (MA)*

EWA Org Code: MAC2BG		
Janitor Supervisor II	F2-02	008053
Janitor III	WS-02	13517
Janitor II	BC-02	#00462, #03594, #11077, #13697, #18573, #22334, #32625, #51279
Janitor III	WS-02	13518
Janitor II	BC-02	#13525, #32621, #32626, #36226, #44090, #110668
Janitor III	WS-02	40097
Janitor II	BC-02	#08061, #11990, #13524, #13696, #38808, #46246, #900046
Janitor III	WS-02	35813
Janitor II	BC-02	#00448, #08442, #12492, #13528, #21630, #36228, #51277
Janitor III	WS-02	40100
Janitor II	BC-02	#05844, #11080, #15460, #21634, #35866, #40096, #46223
Janitor III	WS-02	11078
Janitor II	BC-02	#21627, #21631, #36758, #46484, #110439, #900047

General Fund 48.00 (MA)*

MAUKA Org Code: MAC3BG		
Janitor Supervisor II	F2-02	10099
Janitor III	WS-02	12910
Janitor II	BC-02	#12905, #22323, #27240, #32623, #47533, #110442, #900049
Janitor III	WS-02	13515
Janitor II	BC-02	#00460, #12907, #13527, #13690, #17467, #21632, #27237, #27239, #900004
Janitor III	WS-02	21215
Janitor II	BC-02	#00461, #00465, #08059, #09090, #10104, #11988, #12909, #13521, #22328
Janitor III	WS-02	40099
Janitor II	BC-02	#00453, #00458, #11081, #11083, #12916, #13699, #22329, #27235
Janitor III	WS-02	14601
Janitor II	BC-02	#10105, #11084, #13520, #18572, #22946, #47532
Janitor III	WS-02	14600
Janitor II	BC-02	#00452, #04882, #12904

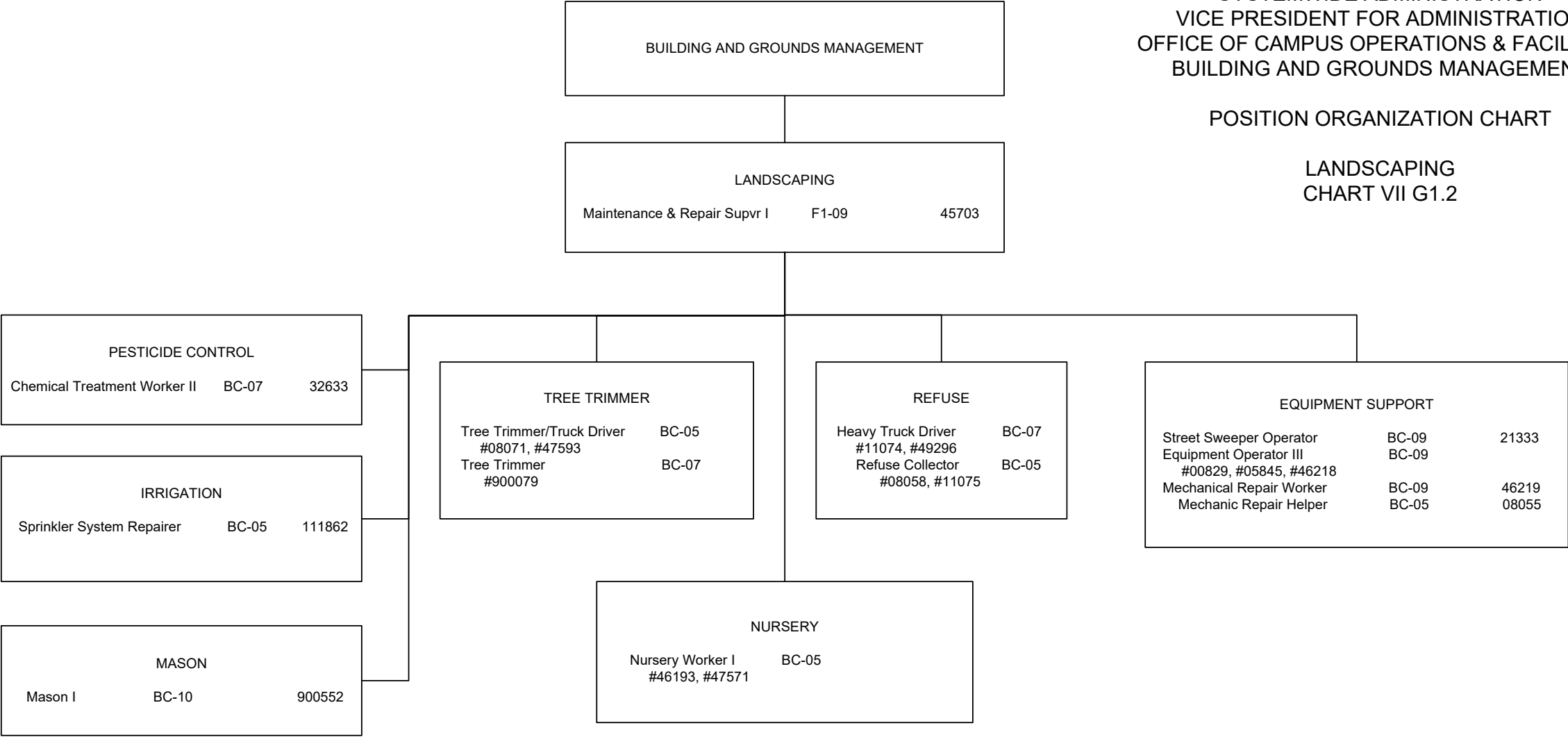
General Fund 49.00 (MA)*

* All positions on Chart VII G1.1 appropriated to Manoa, reflected organizationally on this chart

STATE OF HAWAI'I
UNIVERSITY OF HAWAI'I
SYSTEMWIDE ADMINISTRATION
VICE PRESIDENT FOR ADMINISTRATION
OFFICE OF CAMPUS OPERATIONS & FACILITIES
BUILDING AND GROUNDS MANAGEMENT

POSITION ORGANIZATION CHART

LANDSCAPING
CHART VII G1.2

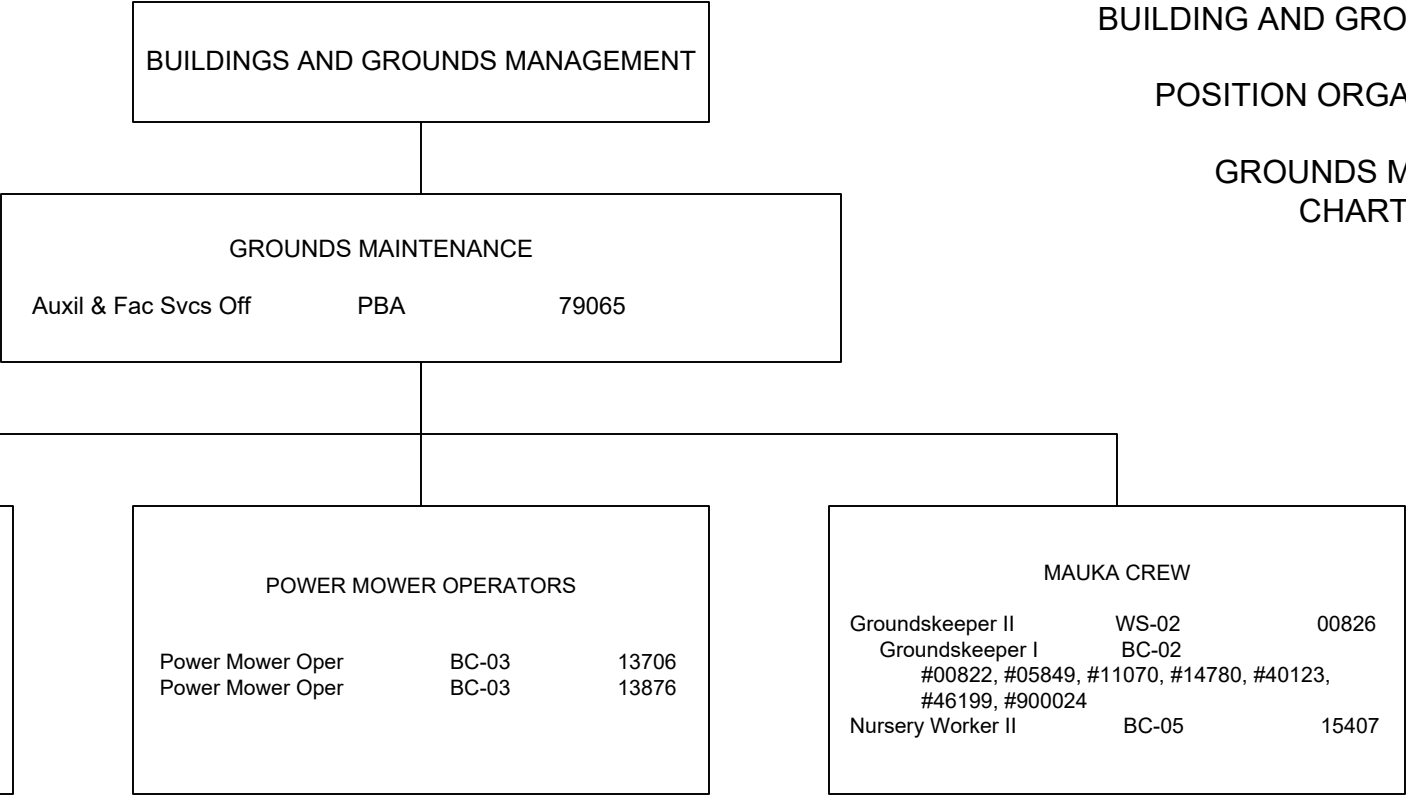


* All positions on Chart VII G1.2 appropriated to Manoa, reflected organizationally on this chart

STATE OF HAWAI‘I
UNIVERSITY OF HAWAI‘I
SYSTEMWIDE ADMINISTRATION
VICE PRESIDENT FOR ADMINISTRATION
OFFICE OF CAMPUS OPERATIONS & FACILITIES
BUILDING AND GROUNDS MANAGEMENT

POSITION ORGANIZATION CHART

GROUNDS MAINTENANCE
CHART VII G1.3

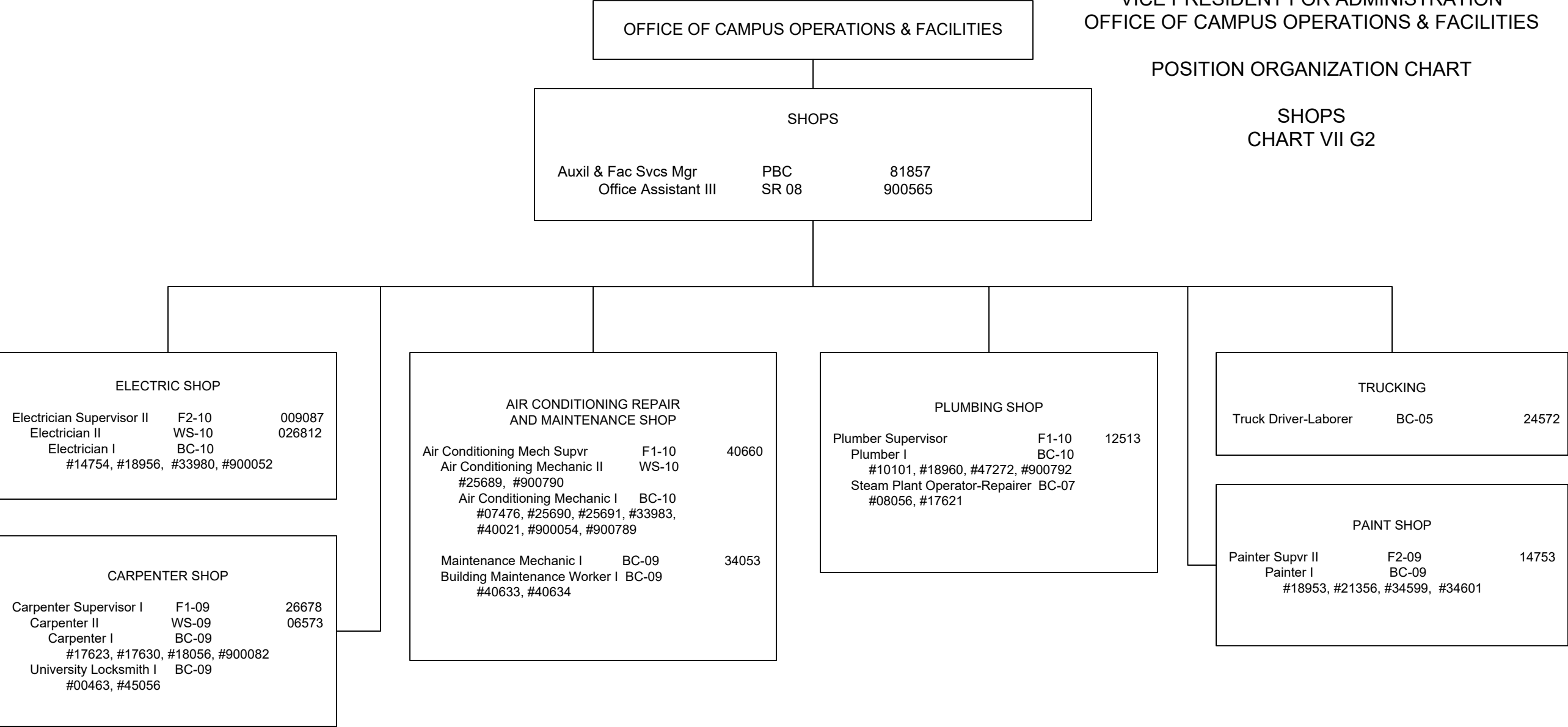


* All positions on Chart VII G1.3 appropriated to Manoa, reflected organizationally on this chart

STATE OF HAWAI'I
UNIVERSITY OF HAWAI'I
SYSTEMWIDE ADMINISTRATION
VICE PRESIDENT FOR ADMINISTRATION
OFFICE OF CAMPUS OPERATIONS & FACILITIES

POSITION ORGANIZATION CHART

SHOPS
CHART VII G2



* All positions on Chart VII G2 appropriated to Manoa, reflected organizationally on this chart

STATE OF HAWAI'I
UNIVERSITY OF HAWAI'I
SYSTEMWIDE ADMINISTRATION
VICE PRESIDENT FOR ADMINISTRATION
OFFICE OF PROJECT DELIVERY

POSITION ORGANIZATION CHART

CHART VII H

OFFICE OF THE VICE PRESIDENT FOR ADMINISTRATION		
Vice President for Administration		89446 ¹

OFFICE OF PROJECT DELIVERY		
Director		89233
Project Manager	PBB	77270*

PROJECT MANAGEMENT		
Project Manager	PBC	79778*
Project Manager	PBB	77224*
Project Manager	PBB	77992*
Project Manager	PBB	78552*
Registered Architect	PBB	78887*
Registered Architect	PBB	79490*
Registered Architect	PBB	80788*
Registered Architect	PBB	77235
Architecture Production Sp	PBB	77308*
Project Manager	PBB	80338*
Admin & Fiscal Support Sp	PBA	80383*

CONSTRUCTION MANAGEMENT		
Construction Manager	PBC	78691
Construction Manager	PBB	79011
Construction Inspector	PBB	78975*
Construction Manager	PBB	81050*
Operations Coordinator	PBB	79261*
Construction Manager	PBB	81995*
Construction Manager	PBB	81138*
Architect	PBB	81897*
Construction Inspector	PBB	77086
Construction Manager	PBB	81209*
Construction Inspector	PBB	78752*

¹ Excluded from position count

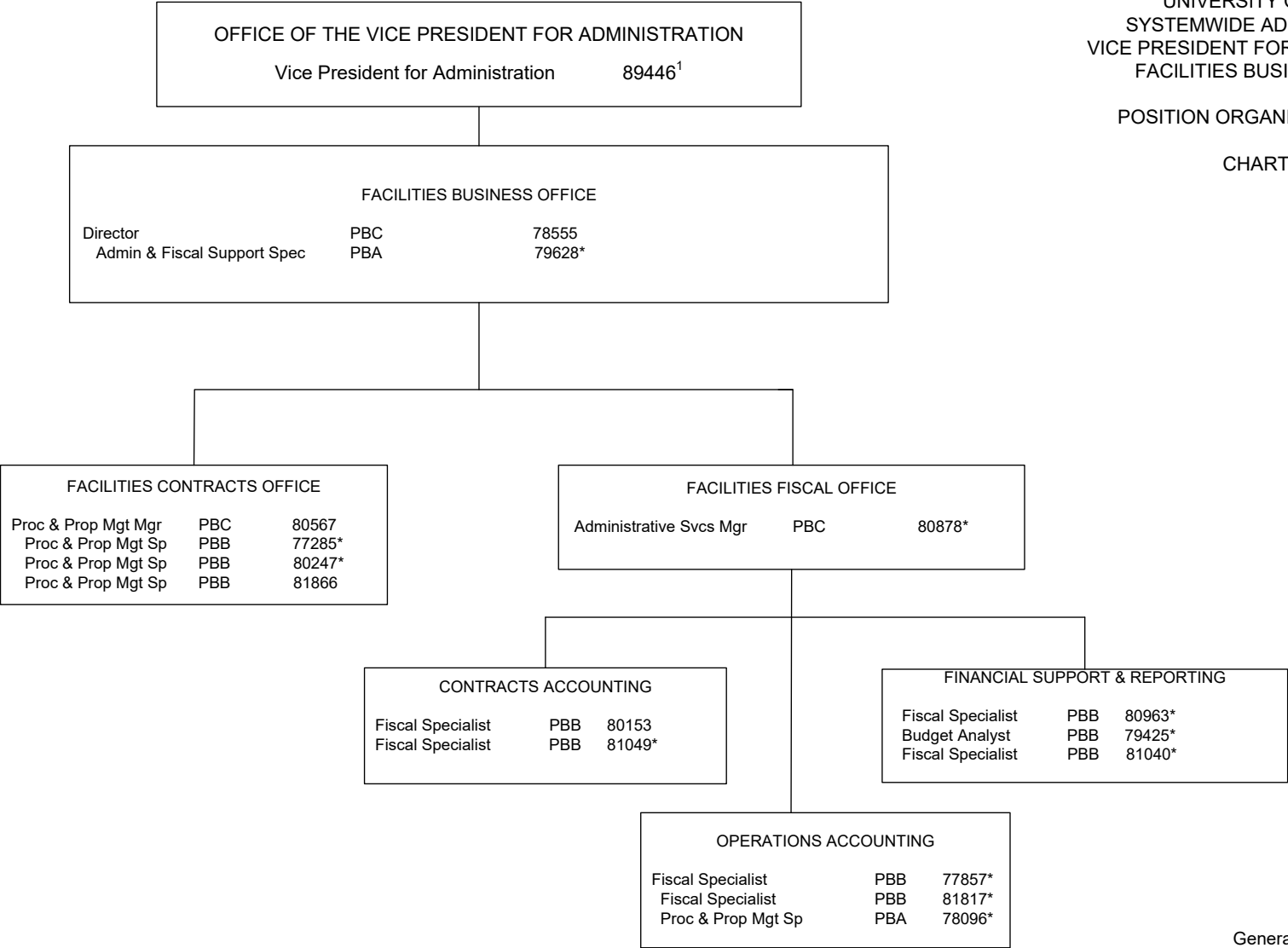
* Positions appropriated to Manoa, reflected organizationally on this chart

	<u>Perm</u>
General Fund	5.00 (SW)
General Fund	19.00 (MA)*

STATE OF HAWAI'I
UNIVERSITY OF HAWAI'I
SYSTEMWIDE ADMINISTRATION
VICE PRESIDENT FOR ADMINISTRATION
FACILITIES BUSINESS OFFICE

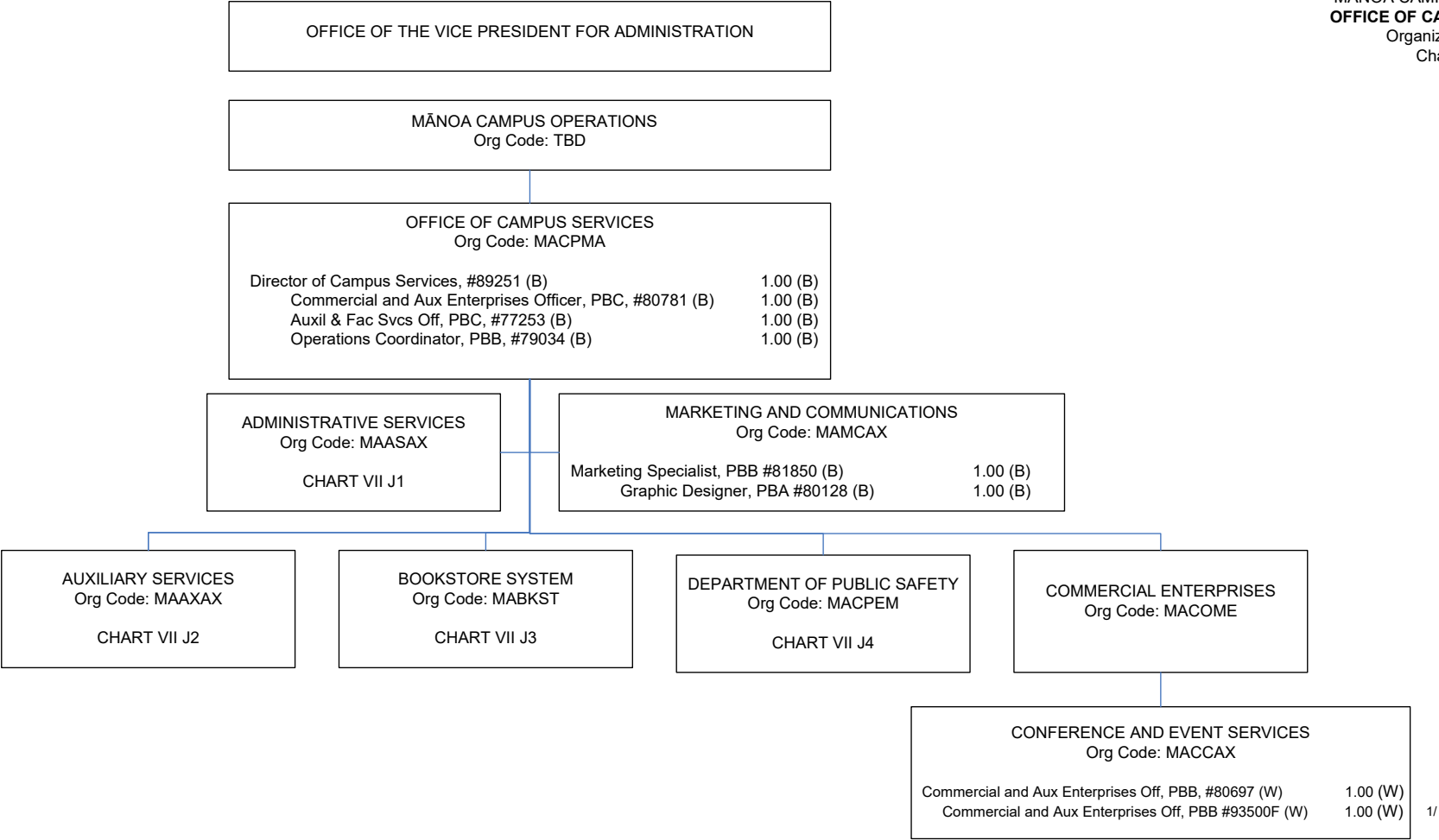
POSITION ORGANIZATION CHART

CHART VII I



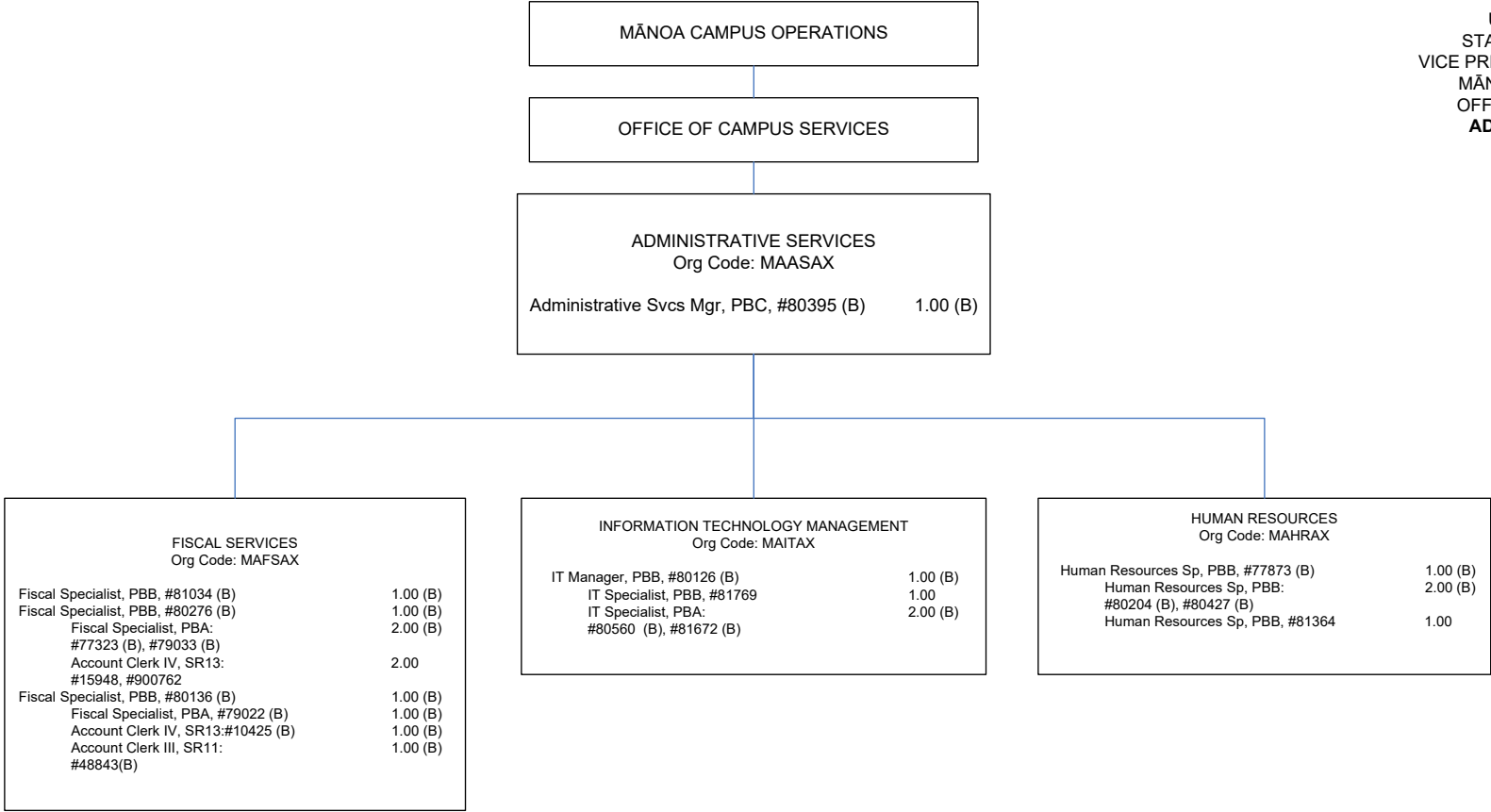
Perm
General Fund 4.00 (SW)
General Fund 11.00 (MA)*

¹ Excluded from position count
* Positions appropriated to Manoa, reflected organizationally on this chart



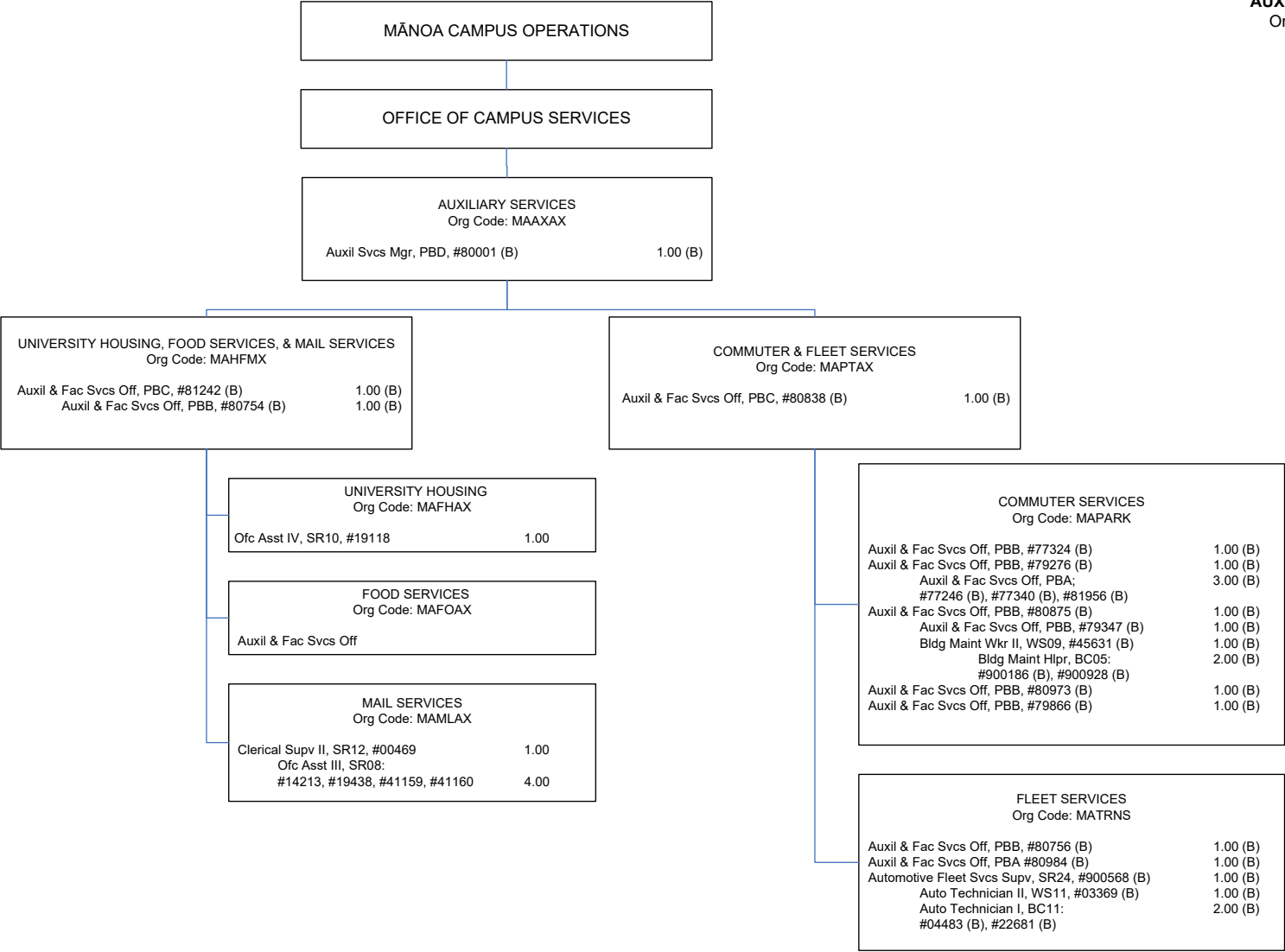
1/ To be established

(B) Special fund position abolished but retained count: #13644



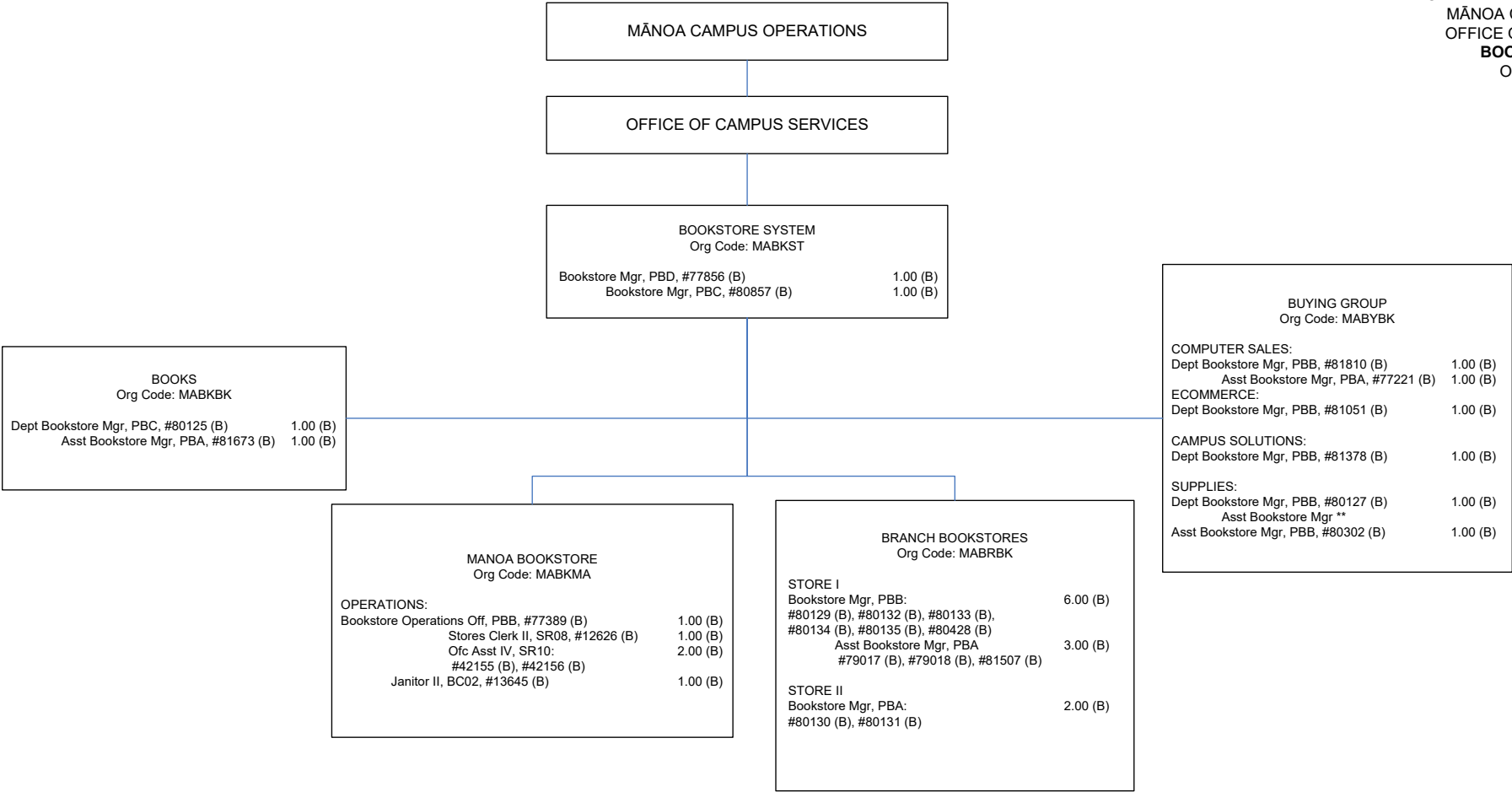
(B) Special fund positions abolished but retained position count: #14867, #14988, #900127, #900596, #17431

CHART TOTAL:	PERM	TEMP
General Funds:	4.00	-- (MA)
Special Funds (B):	20.00	-- (MA)



(A) General fund position abolished but retained count: #41161
(B) Special fund position abolished but retained count: #43011

CHART TOTAL:	PERM	TEMP
General Funds:	7.00	-- (MA)
Special Funds (B):	23.00	-- (MA)



(B) Special fund positions abolished but retained count: #06801, #12627, #13642, #13643, #13944, #13945, #15057, #15538, #17356, #17357, #17358, #17360, #17361, #17362, #17651, #18089, #19065, #19066, #22931, #23809, #24637, #24959, #26727, #27843, #27876, #27887, #32675, #35138, #47164, #94356F, #15539, #17359, #23808, #42016, #42745, #42746

**Represents a supervisory layer that exists but is deleted due to legislative abolishment

CHART TOTAL:	PERM	TEMP
General Funds:	0.00	-- (MA)
Special Funds (B):	62.00	-- (MA)

