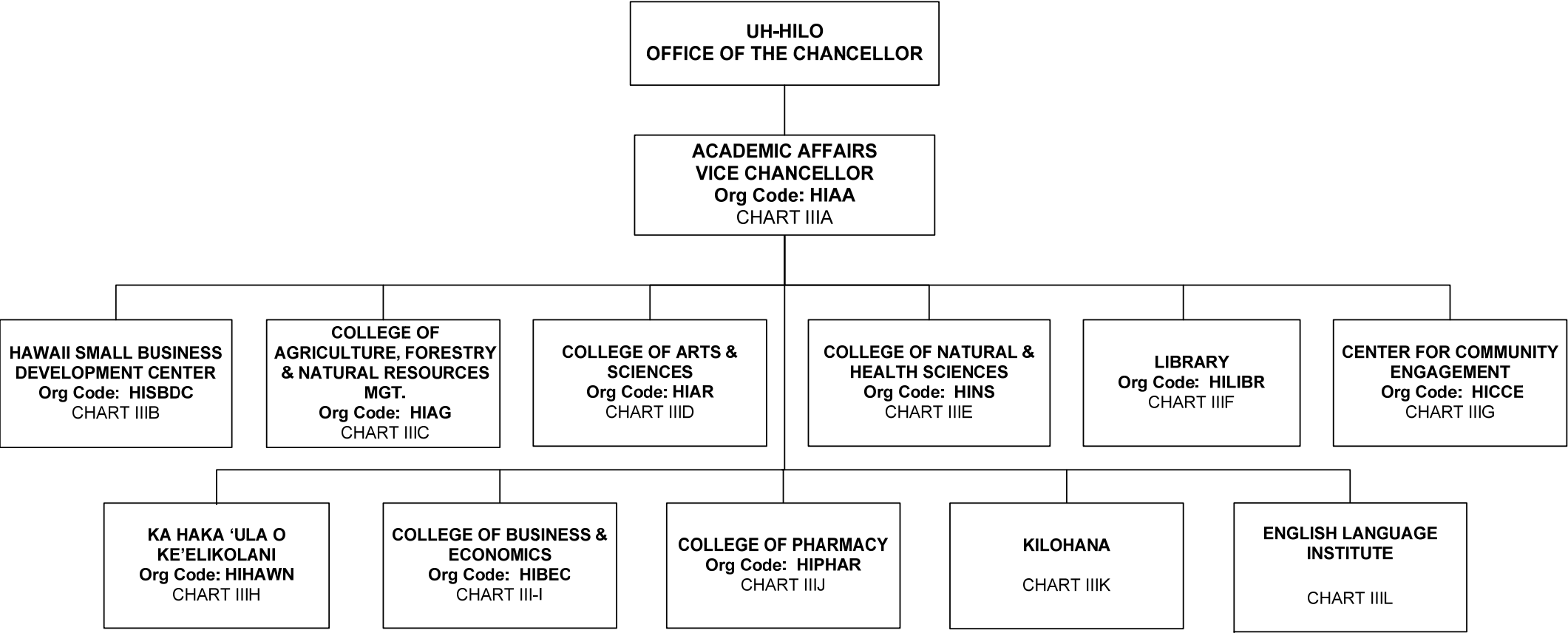
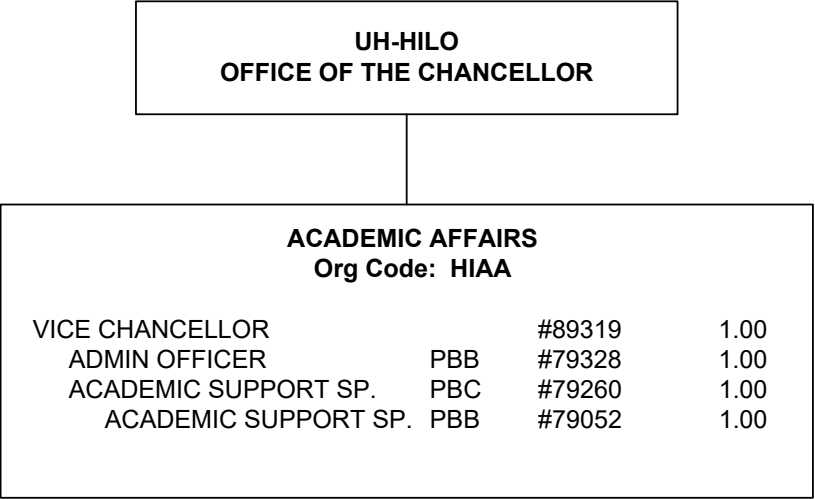
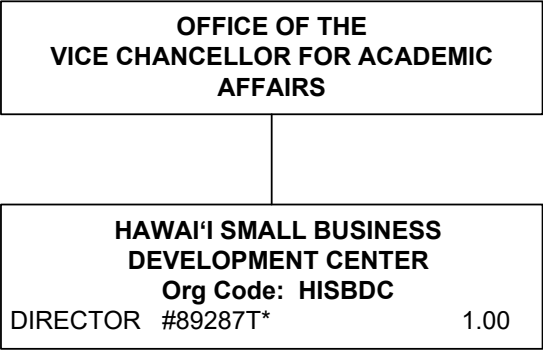


STATE OF HAWAI'I
UNIVERSITY OF HAWAI'I
UNIVERSITY OF HAWAI'I AT HILO
ACADEMIC AFFAIRS
POSITION ORGANIZATION CHART
CHART III



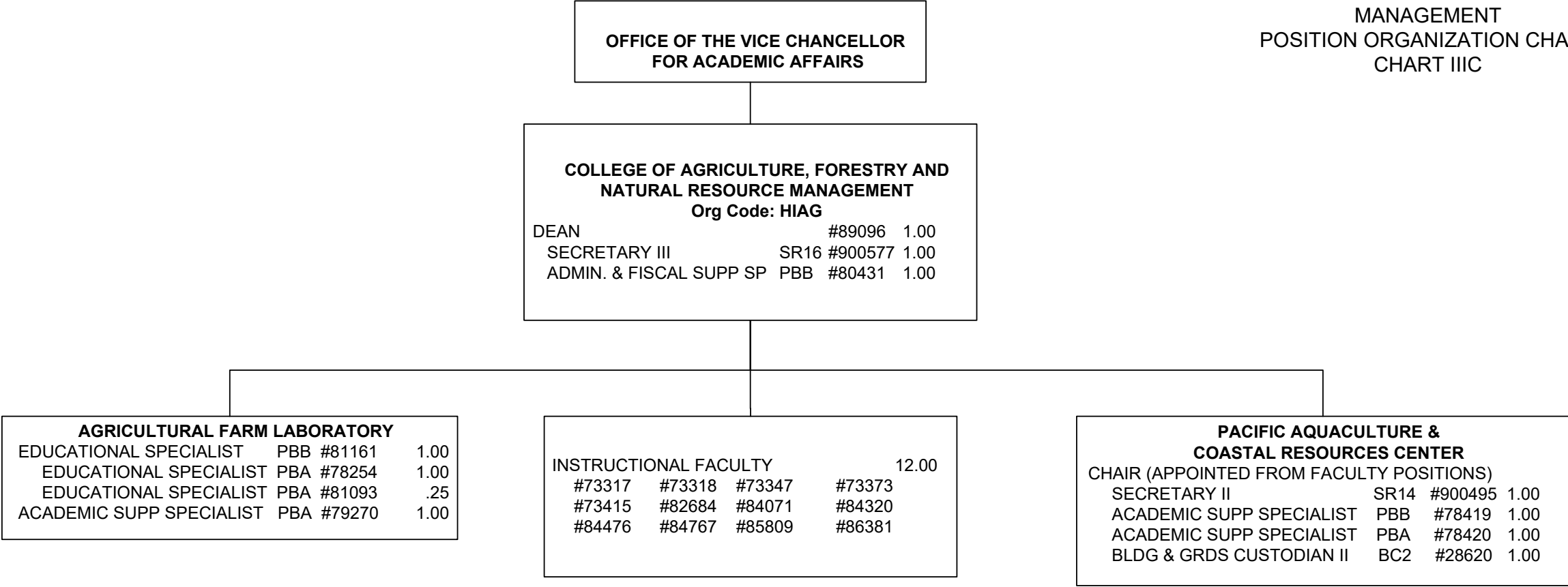


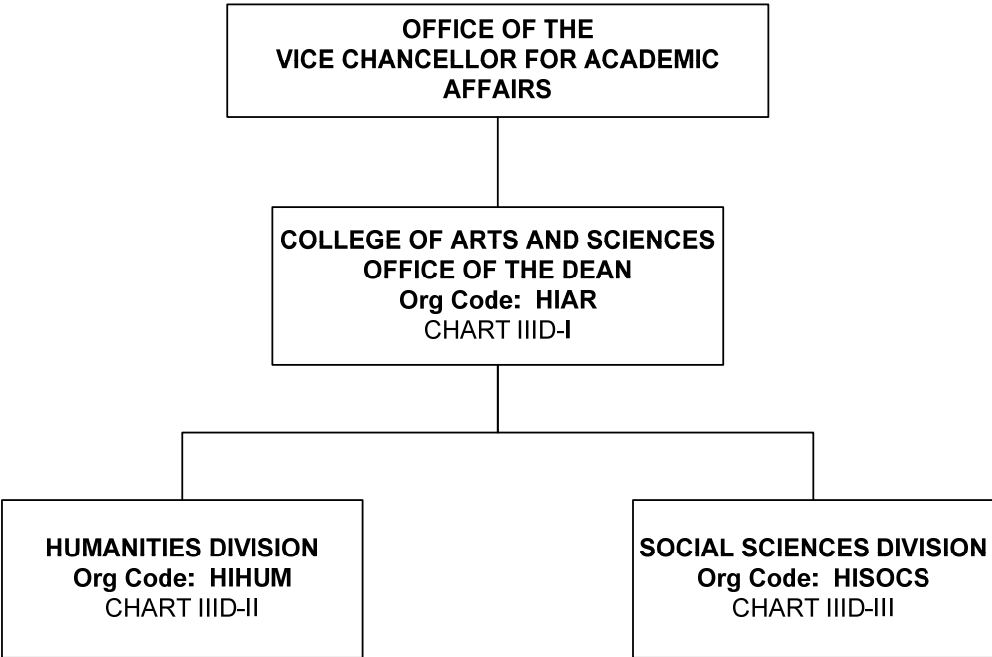
Footnote:
OFFICE ASSISTANT IV SR10 #110529 1.00
(For count purposes only)

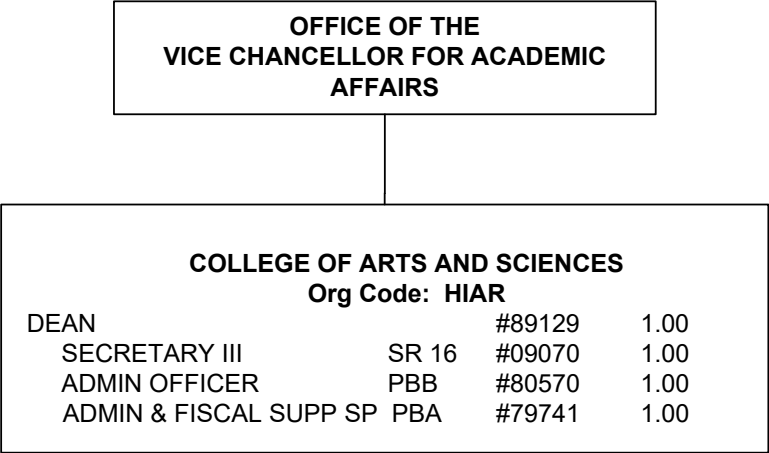


*General Funds – 1.00 (Auth. Temp.)

STATE OF HAWAI'I
UNIVERSITY OF HAWAI'I
UNIVERSITY OF HAWAI'I AT HILO
ACADEMIC AFFAIRS
COLLEGE OF AGRICULTURE,
FORESTRY AND
NATURAL RESOURCE
MANAGEMENT
POSITION ORGANIZATION CHART
CHART IIIC







COLLEGE OF ARTS AND SCIENCES
OFFICE OF THE DEAN

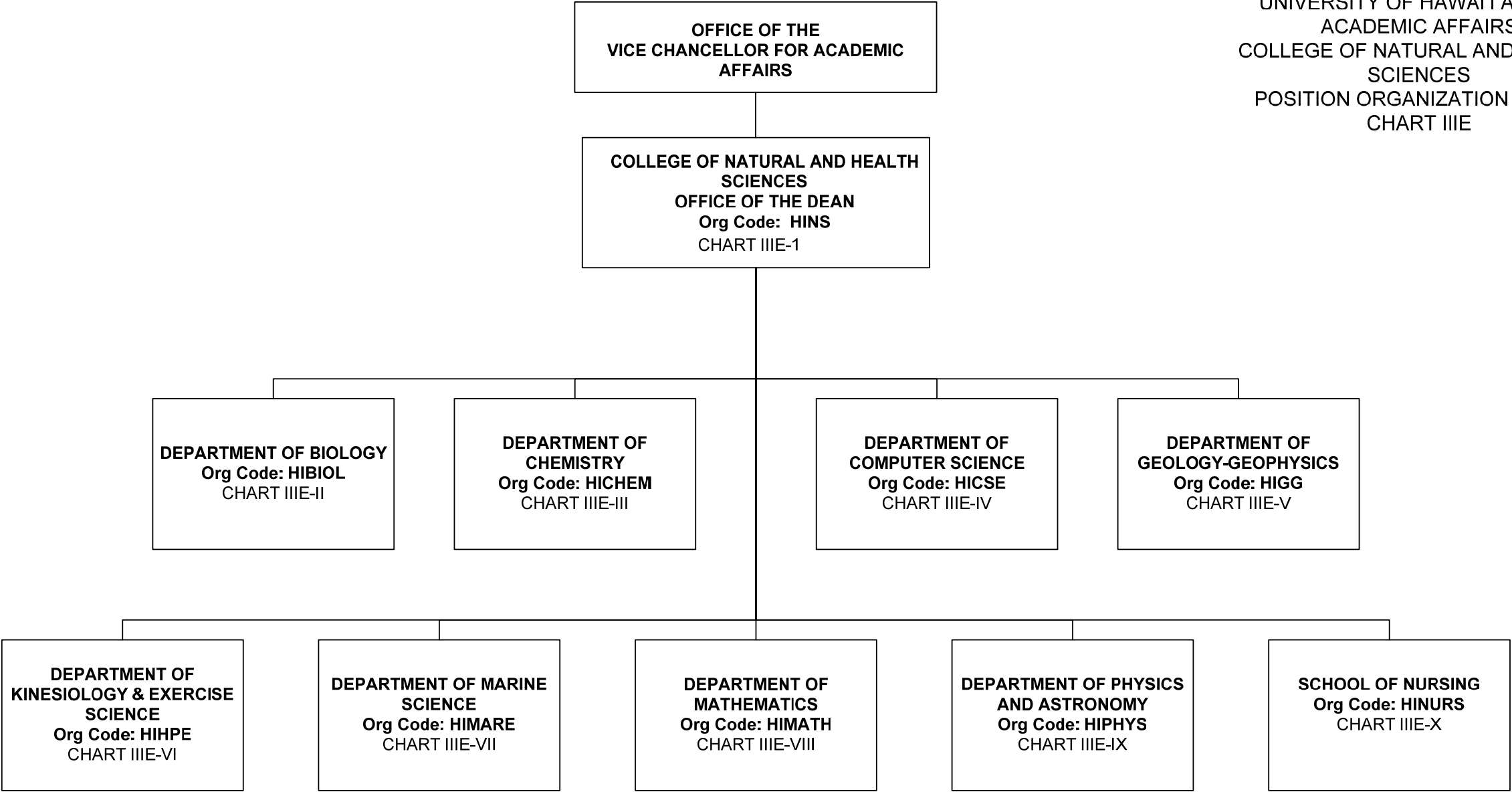
HUMANITIES DIVISION					
Org Code: HIHUM					
CHAIR (APPOINTED FROM FACULTY POSITIONS)					
SECRETARY II	SR14	#21531			1.00
ART Org Code: HIART					
FACULTY:	#82001	#82312	#82562	#84604	4.00
ASIAN PACIFIC LANGUAGES Org Code: HIAPL					
FACULTY:	#73407	#82832	#83971	#84038	#86365
					5.00
COMMUNICATION Org Code: HICOM					
FACULTY:	#73256	#73343(S)	#83107	#83158	#83655
	#83784	#84242	#86411	#86462T	9.00
ENGLISH Org Code: HIENG					
FACULTY:	#73344(S)	#73450T	#82171	#82553	#82563
	#83928	#84198	#84267	#86463T	#86540
				#86471T	12.00
EUROPEAN LANGUAGES FACULTY Org code: HIEL					
FACULTY:	#73346				1.00
PERFORMING ARTS Org Code: HIMUS					
FACULTY:	#82775	#84213			2.00
PHILOSOPHY Org Code: HIPHIL					
FACULTY:	#73368(S)	#82478	#82654	#84509	4.00

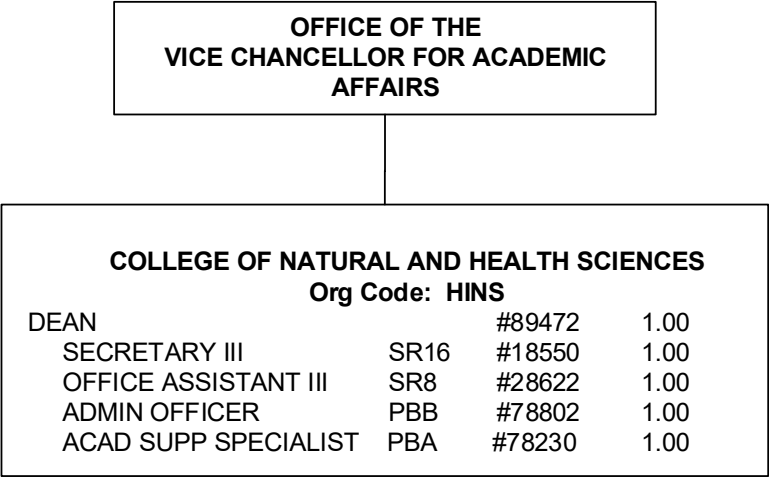
General Funds – 31.00
Special Funds (S) – 3.00
General Funds – 4.00 (Auth. Temp.)

COLLEGE OF ARTS AND SCIENCES
OFFICE OF THE DEAN

SOCIAL SCIENCES DIVISION					
Org Code: HISOCS					
CHAIR (APPOINTED FROM FACULTY POSITIONS)					
ADMIN. & FISCAL SUPP SP	PBA	#96520			1.00
ANTHROPOLOGY Org Code: HIANTH					
FACULTY: #73345(S)	#73372	#82214	#82557	#83005	#86481
	#86488	#99616F(S)@			8.00
SCHOOL OF EDUCATION Org Code: HIED					
OFFICE ASSISTANT IV	SR10			#42269+	1.00
FACULTY: #73301	#73464	#82179	#83049	#83596	#83791
	#86541				7.00
GEOGRAPHY Org Code: HIGEOG					
FACULTY: #82899	#83555	#84766	#86404	#86414	5.00
HISTORY Org Code: HIHIST					
FACULTY: #82009	#82577	#84285	#84483	#86360	5.00
POLITICAL SCIENCE Org Code: HIPOLS					
FACULTY: #82309	#82352	#82821	#83186	#86445	#86450
					6.00
PSYCHOLOGY Org Code: HIPSU					
FACULTY: #73254	#73298	#73362	#82349	#82542	#82847
	#82933	#83929	#83981	#86362	#86413
				#86417	12.00
SOCIOLOGY Org Code: HISOC					
FACULTY: #73352	#82169	#82303	#84593	#86370	5.00

@ Pending Establishment
+ Reports to Department Chair





COLLEGE OF NATURAL AND HEALTH SCIENCES
OFFICE OF THE DEAN

DEPARTMENT OF BIOLOGY					
Org Code: HPSY					
CHAIR (APPOINTED FROM FACULTY POSITIONS)					
SECRETARY II SR14		#22484		1.00	
LAB COORDINATOR PBB		#80902		1.00	
FACULTY:	#73299	#73342(S)	#73363	#73404(S)	14.00
	#73435	#82322	#82643	#82909	
	#83122	#83380	#83424	#83631	
	#86408	#99622F(S)@			

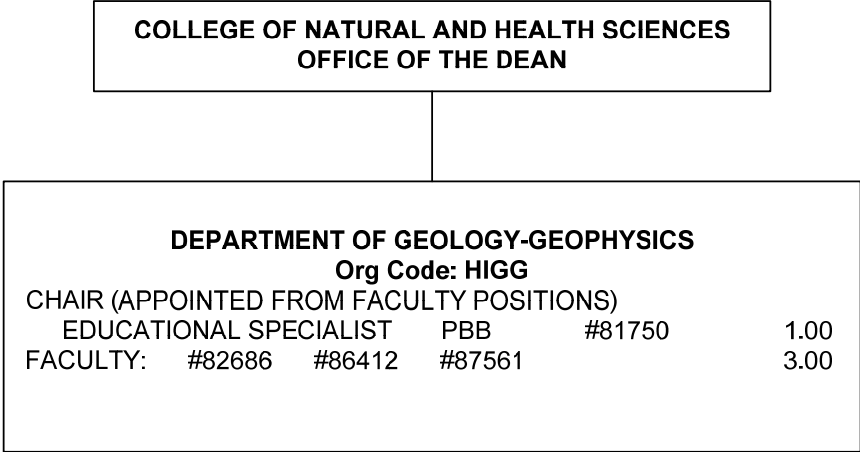
@ Pending Establishment

COLLEGE OF NATURAL AND HEALTH SCIENCES
OFFICE OF THE DEAN

DEPARTMENT OF CHEMISTRY					
Org Code: HICHEM					
CHAIR (APPOINTED FROM FACULTY POSITIONS)					
LAB COORDINATOR	PBA	#80903			1.00
FACULTY:	#73258	#73340(S)	#73459	#82453	8.00
	#82551	#82648	#82915	#84211	

COLLEGE OF NATURAL AND HEALTH SCIENCES
OFFICE OF THE DEAN

DEPARTMENT OF COMPUTER SCIENCE					
Org Code: HICSE					
CHAIR (APPOINTED FROM FACULTY POSITIONS)					
FACULTY:	#73257	#73371	#83269	#83648	5.00
	#86382				
SPECIALIST TYPE FACULTY:		#86437			1.00



COLLEGE OF NATURAL AND HEALTH SCIENCES
OFFICE OF THE DEAN

DEPARTMENT OF KINESIOLOGY & EXERCISE SCIENCE

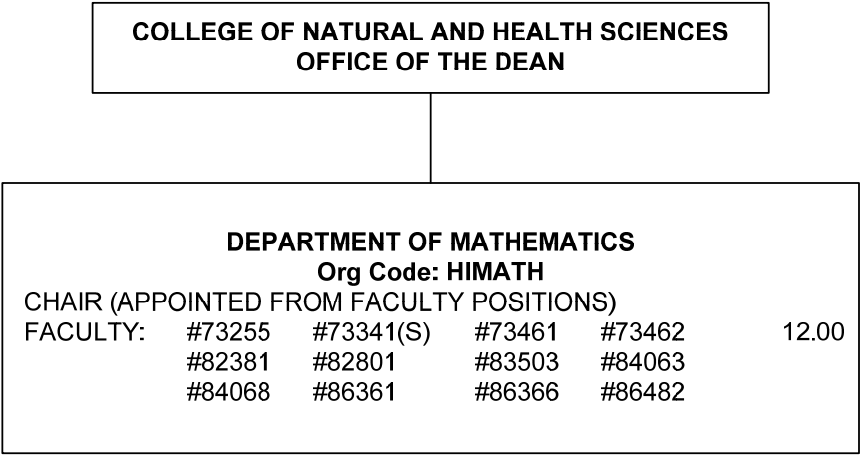
Org Code: HIHPE

CHAIR (APPOINTED FROM FACULTY POSITIONS)

FACULTY:	#73367(S)	#73434	#82556	#82781	8.00
	#83614	#84855	#86416	#87564	

COLLEGE OF NATURAL AND HEALTH SCIENCES
OFFICE OF THE DEAN

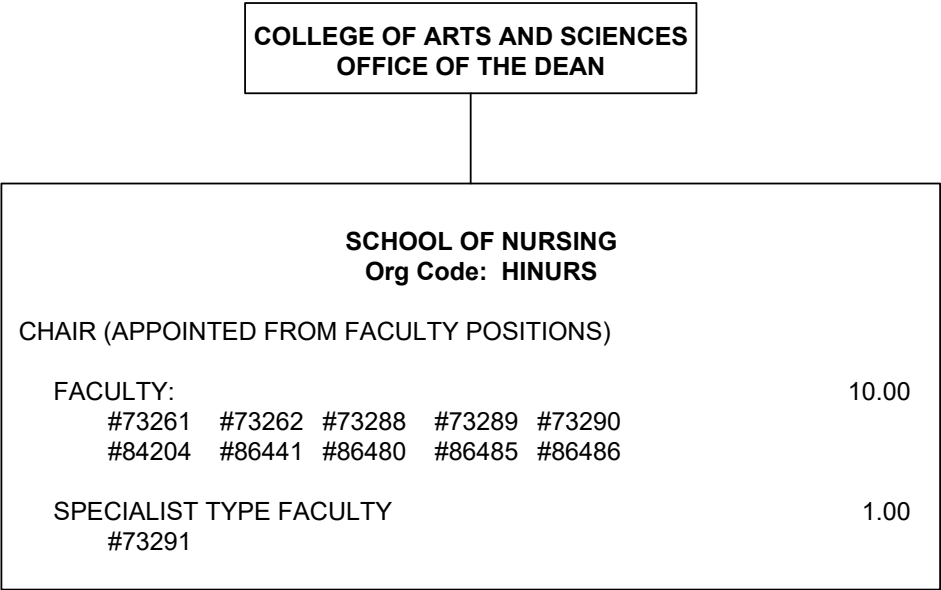
DEPARTMENT OF MARINE SCIENCE					
Org Code: HIMARE					
CHAIR (APPOINTED FROM FACULTY POSITIONS)					
EDUCATIONAL SPECIALIST PBB #78641 #78835					2.00
FACULTY:	#82358	#83157	#83187	#83190	8.00
	#83207	#84233	#86439	#86483	

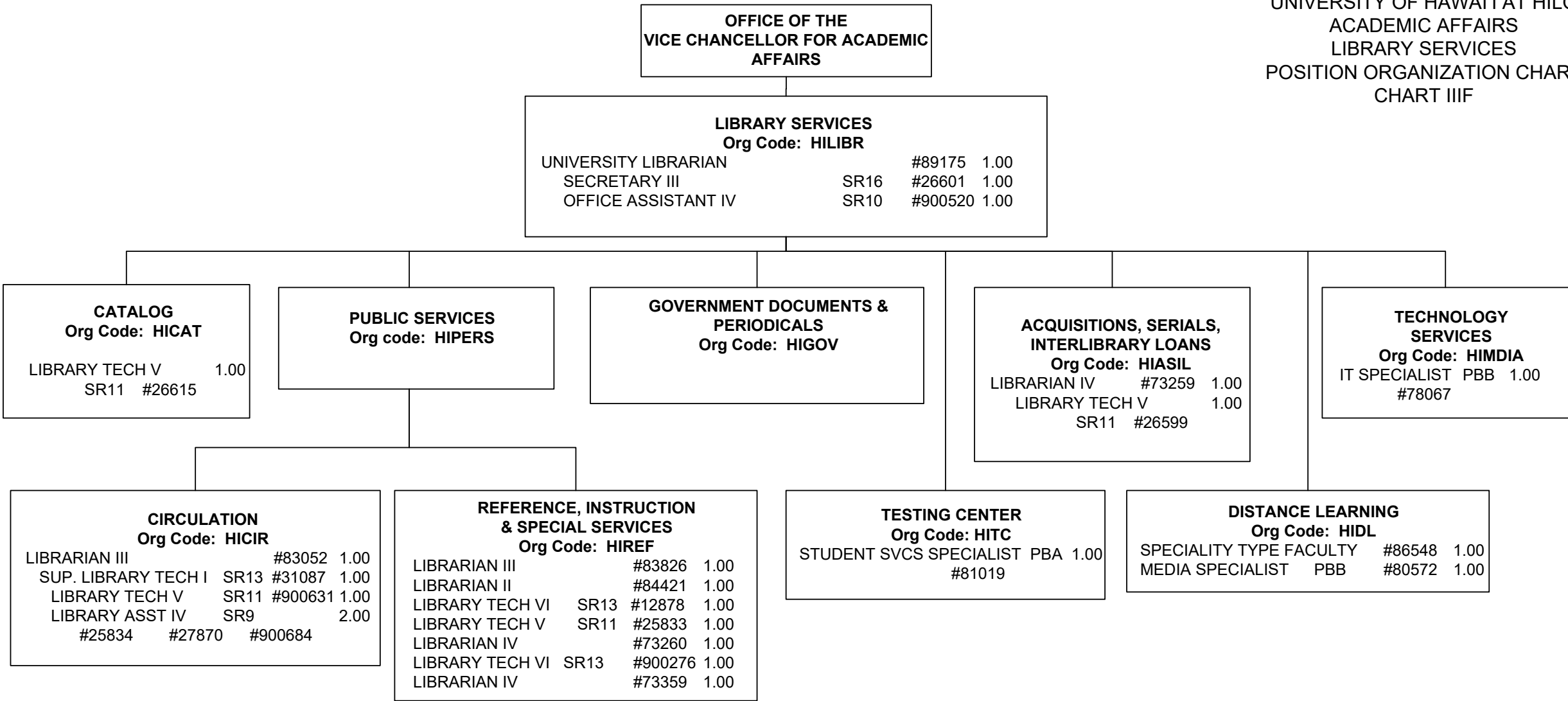


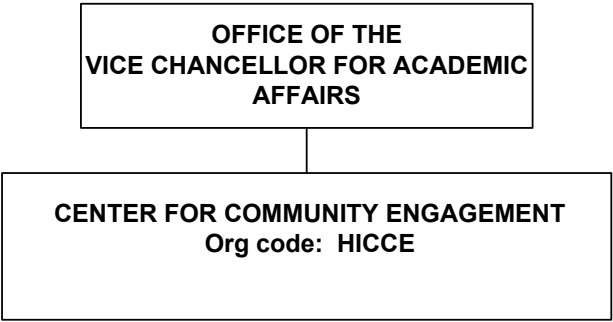
COLLEGE OF NATURAL AND HEALTH SCIENCES
OFFICE OF THE DEAN

DEPARTMENT OF PHYSICS & ASTRONOMY					
Org Code: HIPHYS					
CHAIR (APPOINTED FROM FACULTY POSITIONS)					
EDUCATIONAL SPECIALIST				PBB #80997	1.00
FACULTY:	#73350	#82111	#83033	#83815	7.00
	#86373	#86535	#99620F(S)@		

@ Pending Establishment

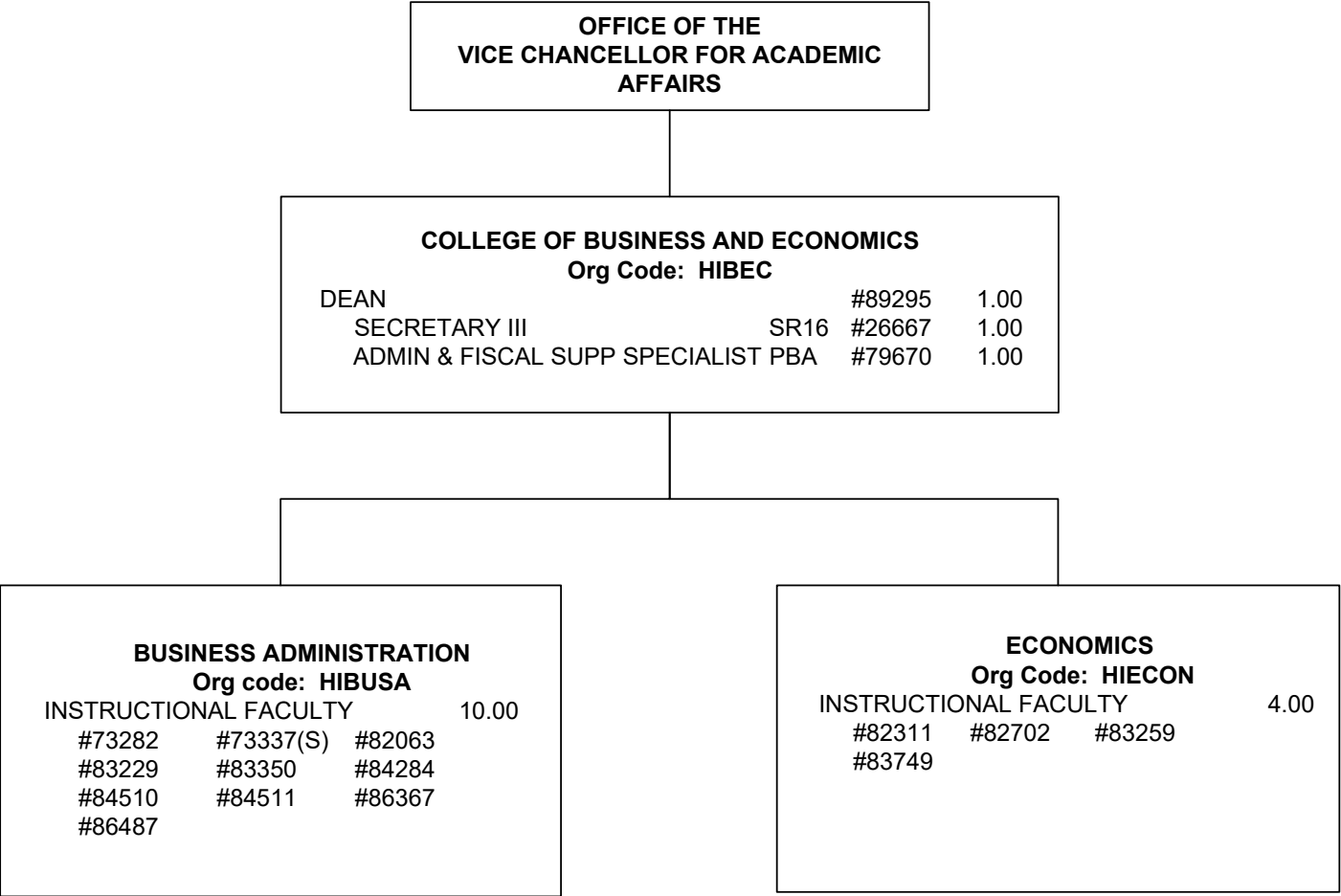




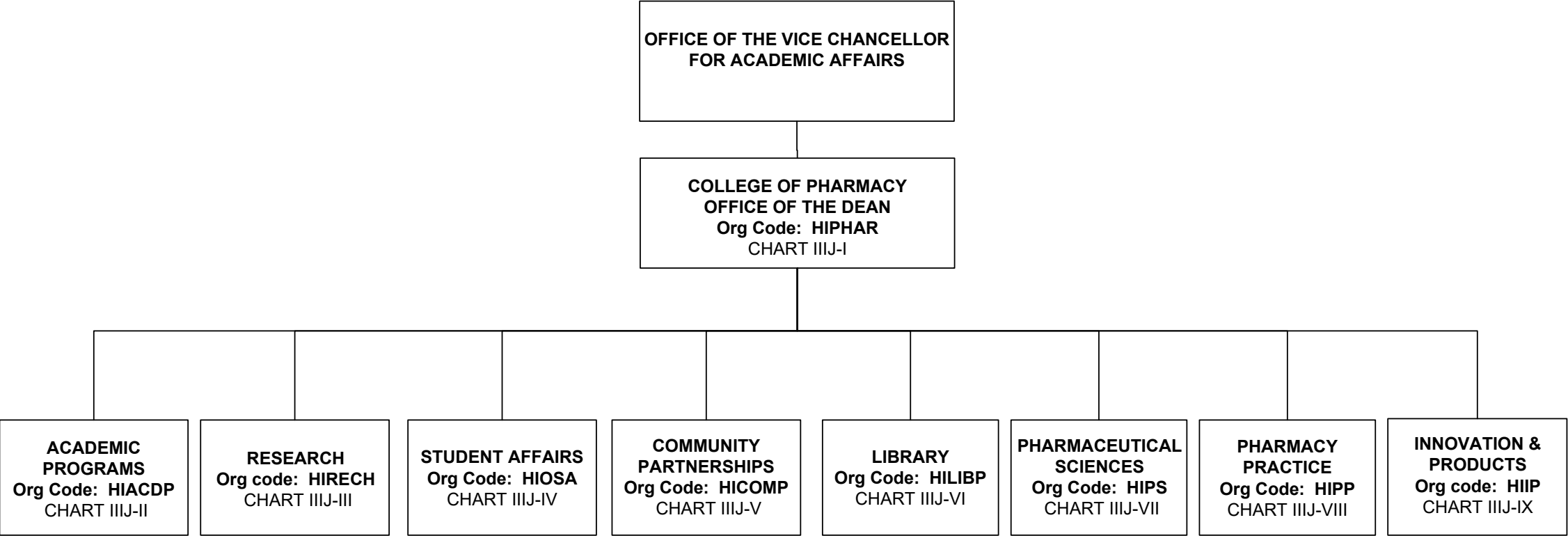


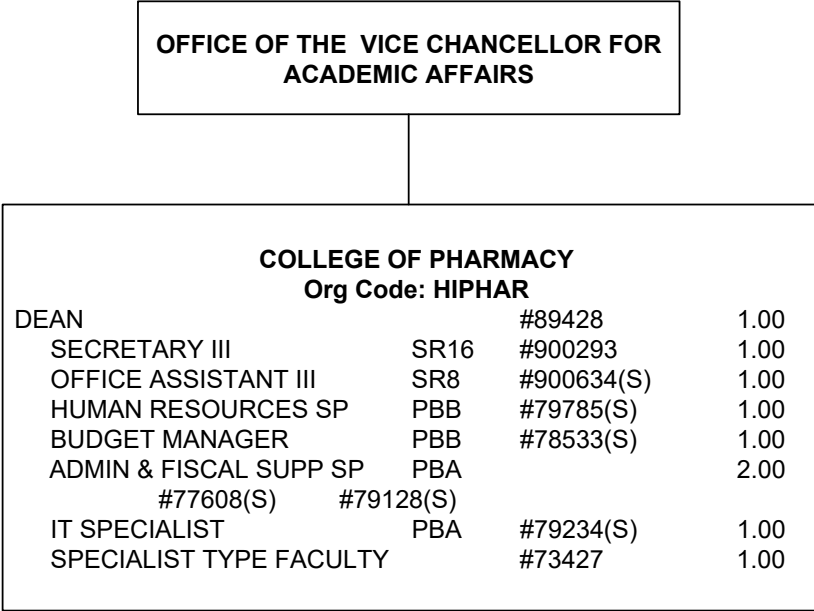
Footnote:

EDUCATIONAL SPECIALIST PBB	#78668(S)	1.00
SECRETARY II SR14	#25886(S)	1.00
SPECIALIST TYPE FACULTY	#86473(S)	1.00
(For count purposes only)		



Footnote:
OFFICE ASSISTANT III SR8 #45475 1.00
(For count purposes only)

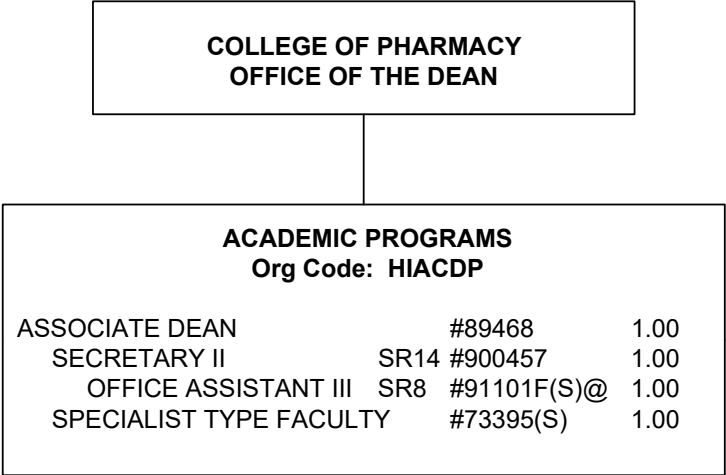




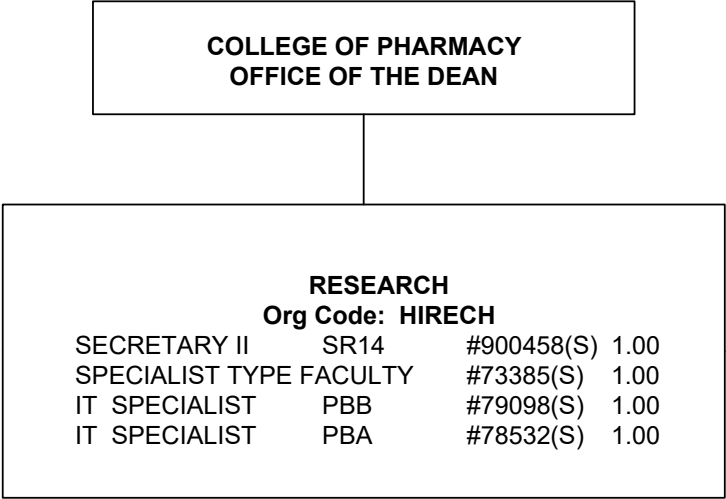
Footnote:

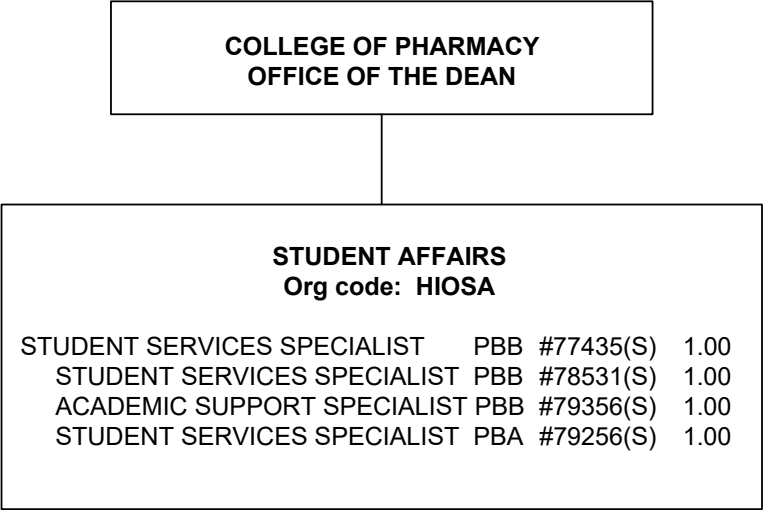
OFFICE ASSISTANT III	SR8	#900525(S)	1.00
----------------------	-----	------------	------

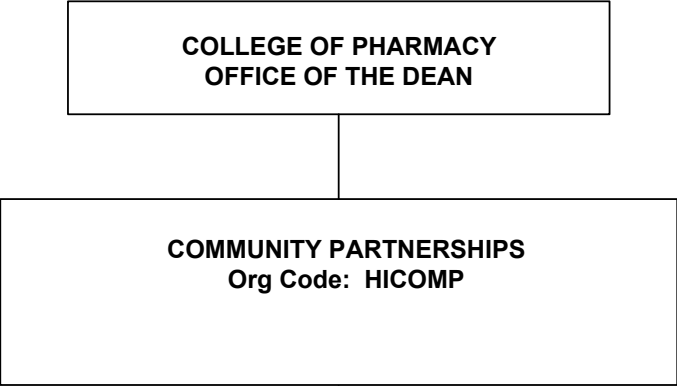
(For count purposes only)

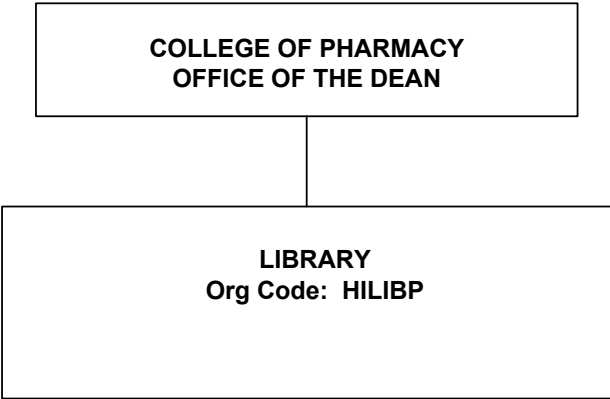


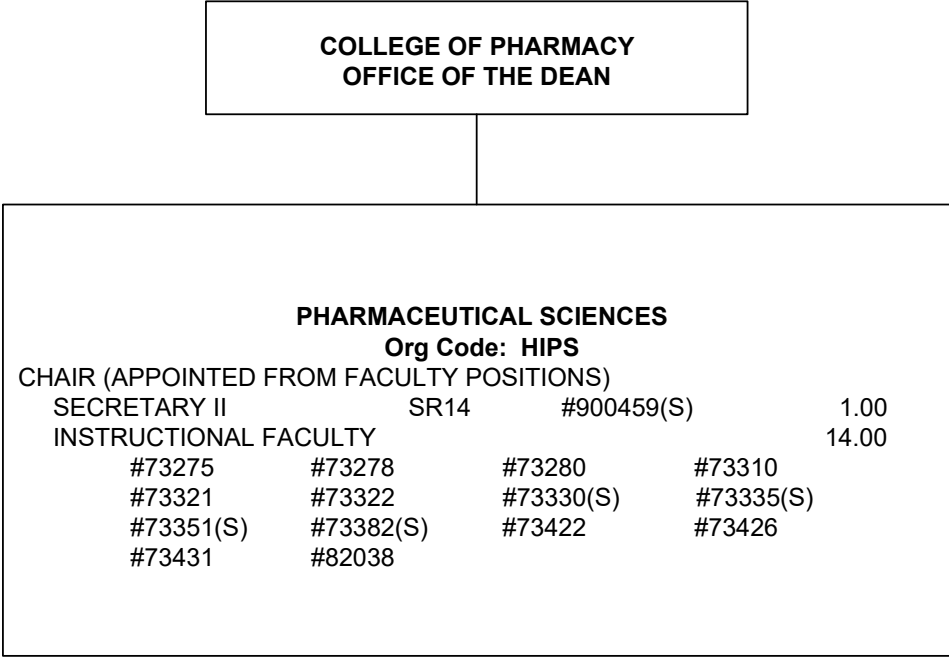
@ Pending Establishment











Footnote:
OFFICE ASSISTANT III SR8 #900633(S) 1.00
(For count purposes only)

