

DEPARTMENT TOTAL:	PERM	TEMP
General Funds:	193.32	3.50

JABSOM FACULTY SENATE

EXECUTIVE COMMITTEE

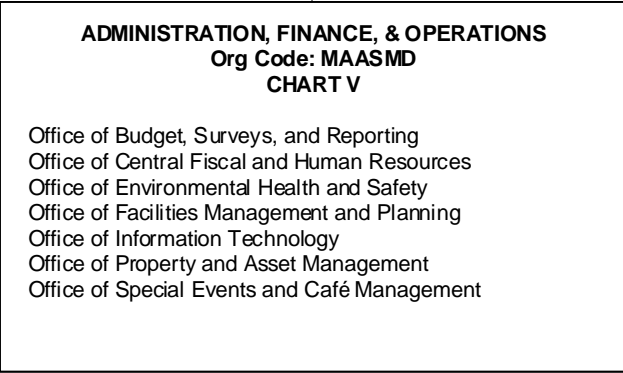
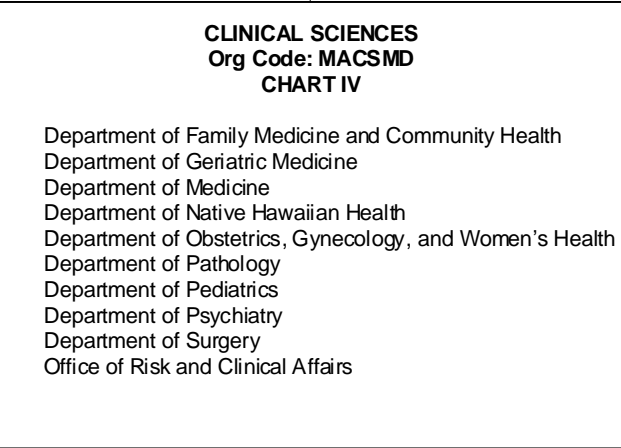
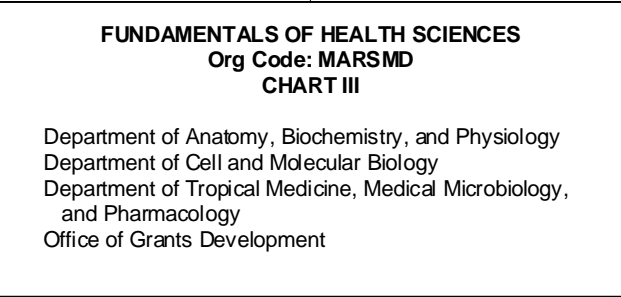
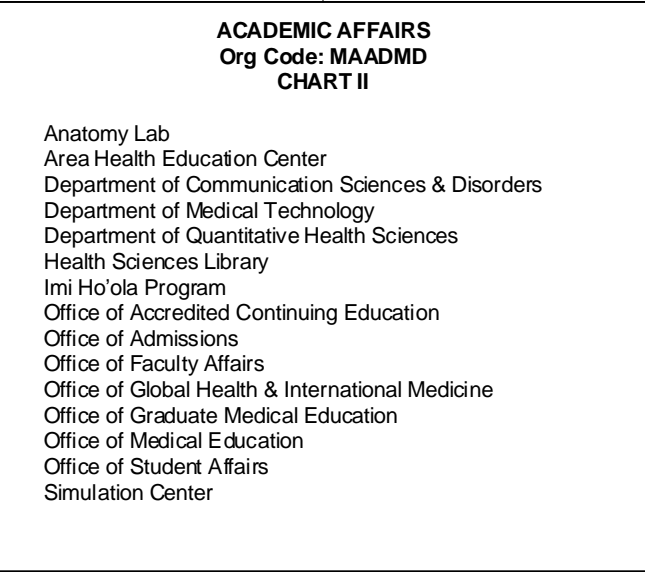
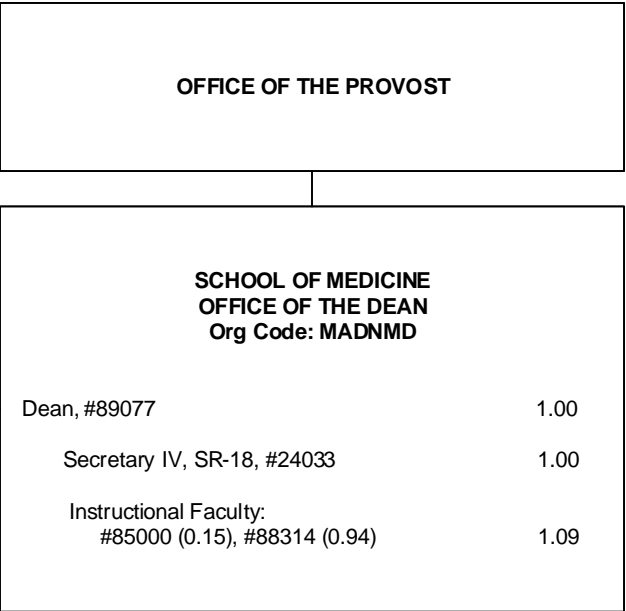
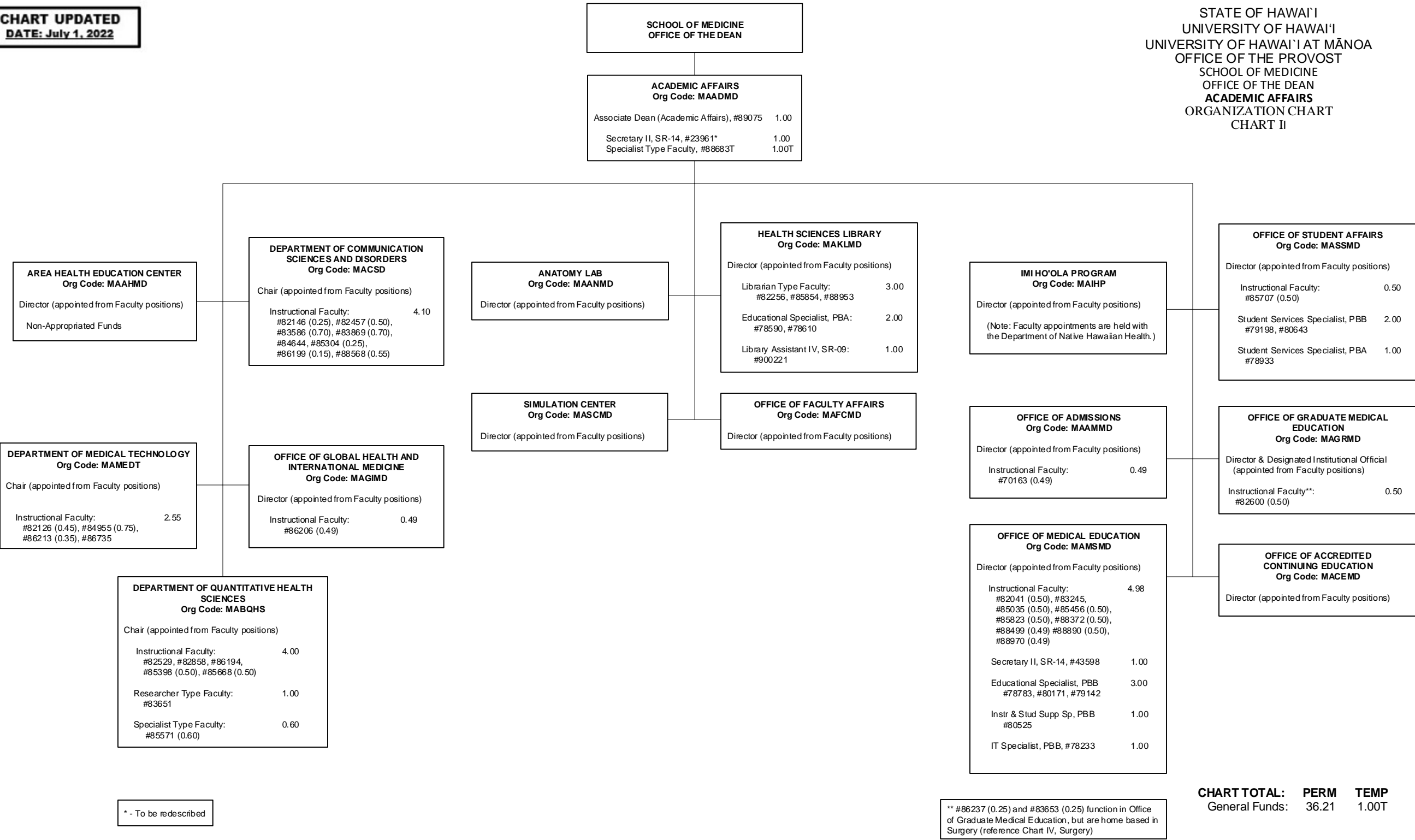
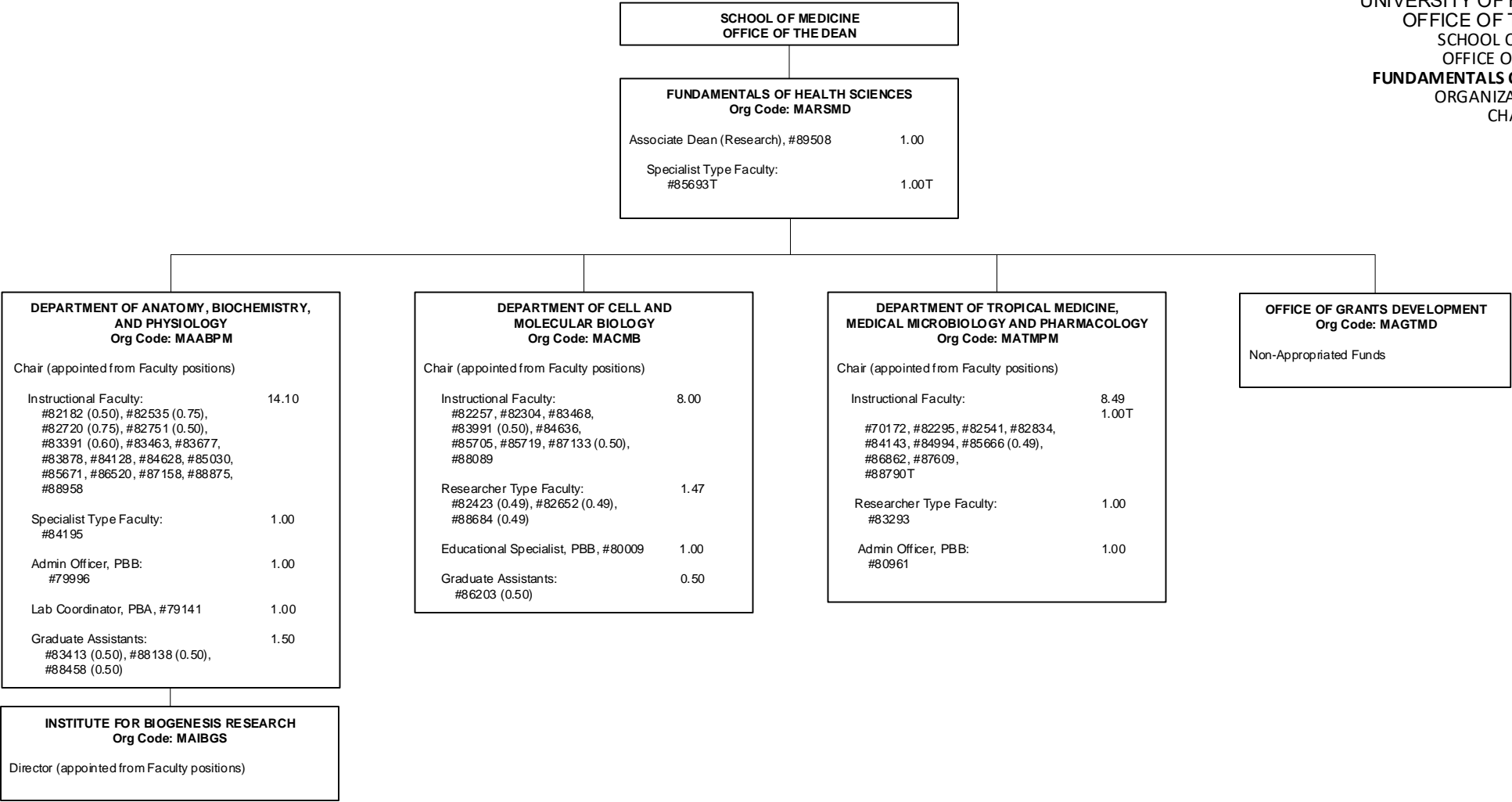


CHART TOTAL:	PERM	TEMP
General Funds:	3.09	0.00



STATE OF HAWAI'I
UNIVERSITY OF HAWAI'I
UNIVERSITY OF HAWAI'I AT MĀNOA
OFFICE OF THE PROVOST
SCHOOL OF MEDICINE
OFFICE OF THE DEAN
FUNDAMENTALS OF HEALTH SCIENCES
ORGANIZATION CHART
CHART III



SCHOOL OF MEDICINE
OFFICE OF THE DEAN

CLINICAL SCIENCES
Org Code: MACSMD

Associate Dean (Clinical Affairs)*

DEPARTMENT OF FAMILY MEDICINE AND
COMMUNITY HEALTH
Org Code: MAFMCH

Chair (appointed from Faculty positions)

Instructional Faculty: 4.65
#83526 (0.25), #83670,
#83658 (0.49), #83731 (0.50),
#83931 (0.25), #83994,
#84152 (0.10), #85562 (0.31),
#85760 (0.30), #88790 (0.25),
#88854 (0.20)

DEPARTMENT OF GERIATRIC MEDICINE
Org Code: MAGERI

Chair (appointed from Faculty positions)

Instructional Faculty: 7.09
#82506 (0.25), #82520 (0.15),
#82732 (0.49), #82849 (0.35),
#83025 (0.25), #83099 (0.15),
#83176 (0.20), #83177 (0.39),
#83575 (0.10), #83958 (0.10),
#85315 (0.49), #85489, #85665 (0.39),
#88455 (0.20), #88512 (0.20),
#88558 (0.34), #88633 (0.20),
#88694, #88695 (0.49), #88791 (0.15),
#88954 (0.20)

Administrative Off, PBB: 2.00
#77639, #79197

DEPARTMENT OF OBSTETRICS,
GYNECOLOGY AND WOMEN'S HEALTH
Org Code: MAOBGN

Chair (appointed from Faculty positions)

Instructional Faculty: 5.15
#83618 (0.50), #84032 (0.20),
#84134 (0.50), #84939 (0.50),
#84985 (0.50), #86325, #86453 (0.50),
#86940 (0.50), #87176 (0.45),
#88562 (0.50)

DEPARTMENT OF PATHOLOGY
Org Code: MAPATH

Chair (appointed from Faculty positions)

Instructional Faculty: 4.50
#82651 (0.50), #82817 (0.25),
#82839 (0.20), #83276 (0.05),
#83773 (0.25), #83949 (0.50),
#84630 (0.60), #85247 (0.50),
#85763 (0.25), #86559 (0.45),
#87250 (0.45), #87277 (0.50)

Secretary II, SR-14, #15609 1.00

DEPARTMENT OF PEDIATRICS
Org Code: MAPED

Chair (appointed from Faculty positions)

Instructional Faculty: 4.83
0.50T
#82365 (0.20), #83270 (0.25)
#83715 (0.25), #84058 (0.75),
#83505 (0.49), #83540, #83564,
#84317, #84543 (0.08), #85264,
#85724 (0.50), #85757 (0.50),
#85770 (0.05), #87273 (0.25),
#88663T (0.50)

Admin & Fis Supp, PBA, #77914 1.00

DEPARTMENT OF PSYCHIATRY
Org Code: MAPSTY

Chair (appointed from Faculty positions)

Instructional Faculty: 7.55
#70040 (0.25), #82210,
#82815 (0.49), #83046 (0.49),
#83505 (0.49), #83540, #83564,
#83843 (0.49), #84257 (0.50),
#84390 (0.25), #85561 (0.49),
#87235, #88880 (0.10)

DEPARTMENT OF NATIVE
HAWAIIAN HEALTH
Org Code: MANHH

Chair (appointed from Faculty positions)

Instructional Faculty: 7.46
#70164 (0.49), #82228, #82824 (0.50),
#83536 (0.49), #85569 (0.50), #85614,
#85893 (0.50), #86057 (0.50), #86332,
#87366 (0.50), #88473 (0.49),
#88663 (0.49)

Specialist Type Faculty: 2.90
#84554, #85449, #88902 (0.90)

Contracts & Grants Sp, PBB, #80900 1.00

NATIVE HAWAIIAN CENTER
OF EXCELLENCE
Org Code: MANHCE

Director (appointed from Faculty positions)

Instructional Faculty: 0.50
#83906 (0.50)

Specialist Type Faculty: 1.80
#83671 (0.90), #84030 (0.90)

CENTER FOR NATIVE AND PACIFIC
HEALTH DISPARITIES AND RESEARCH
Org Code: MANPHD

Director (appointed from Faculty positions)

Instructional Faculty: 1.00
#82997

DEPARTMENT OF MEDICINE
Org Code: MAMED

Chair (appointed from Faculty positions)

Instructional Faculty: 6.98
#83077 (0.30), #83215 (0.55),
#83236 (0.49), #83383 (0.25),
#83495 (0.49), #84100 (0.25),
#84684, #85549 (0.25),
#85670 (0.25), #85742 (0.50),
#85744 (0.25), #85756 (0.30),
#85759 (0.05), #85798 (0.25),
#85771 (0.35), #85775 (0.25),
#85974 (0.25), #88574 (0.45),
#88780 (0.45), #88888 (0.05)

Specialist Type Faculty: 0.90
#83979 (0.90)

Academic Support Sp, PBA, #78982 1.00

OFFICE OF RISK AND
CLINICAL AFFAIRS
Org Code: MAEXMD

Non-Appropriated Funds

DEPARTMENT OF SURGERY
Org Code: MASURG

Chair (appointed from Faculty positions)

Instructional Faculty: 7.15
#82725 (0.25), #83583,
#83653 (0.25), #83736 (0.85),
#84108 (0.10), #84269 (0.10),
#84583 (0.50), #84861 (0.25),
#84912 (0.15), #85055 (0.15),
#85452 (0.05), #85787 (0.45),
#85841, #86086 (0.10), #86237 (0.25),
#86969 (0.50), #87688 (0.60),
#88453 (0.25), #88541 (0.10),
#88700 (0.15), #88792 (0.10)

Specialist Type Faculty: 1.00
#84253

Inst & Stud Supp Sp, PBA, #79824 1.00

HYPERBARIC TREATMENT CENTER
Org Code: MAHYMD

Non-Appropriated Funds

CENTER FOR CARDIOVASCULAR
RESEARCH
Org Code: MACCR

Director (appointed from Faculty positions)

Instructional Faculty: 3.00
#82791, #82194, #82978

HAWAII CENTER FOR AIDS RESEARCH
Org Code: MAHCAR

Director (appointed from Faculty positions)

* - To be established

CHART TOTAL: PERM TEMP
General Funds: 73.46 0.50

STATE OF HAWAI'I
UNIVERSITY OF HAWAI'I
UNIVERSITY OF HAWAI'I AT MĀNOA
OFFICE OF THE PROVOST
SCHOOL OF MEDICINE
OFFICE OF THE DEAN
ADMINISTRATION, FINANCE, AND OPERATIONS
ORGANIZATION CHART
CHART V

