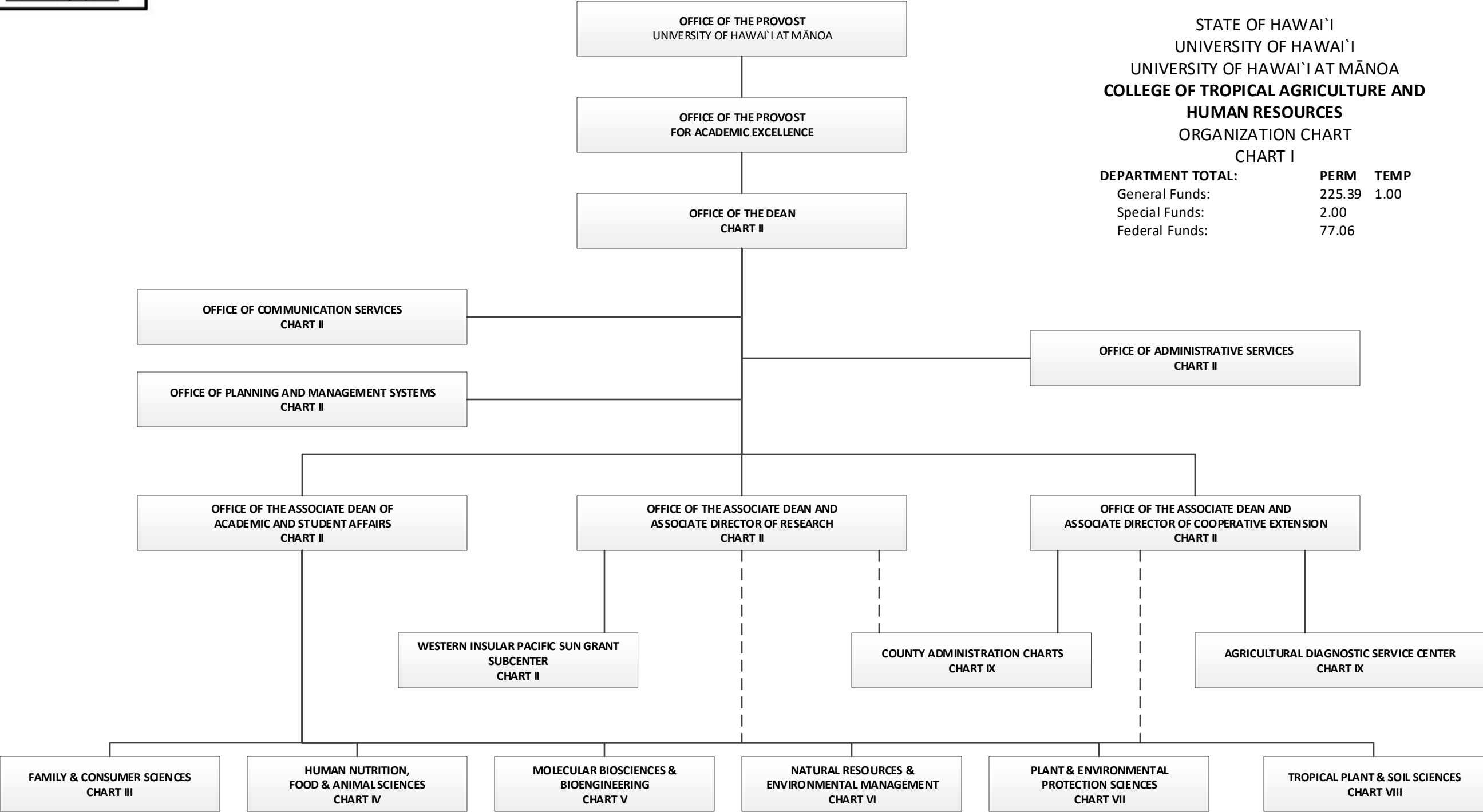


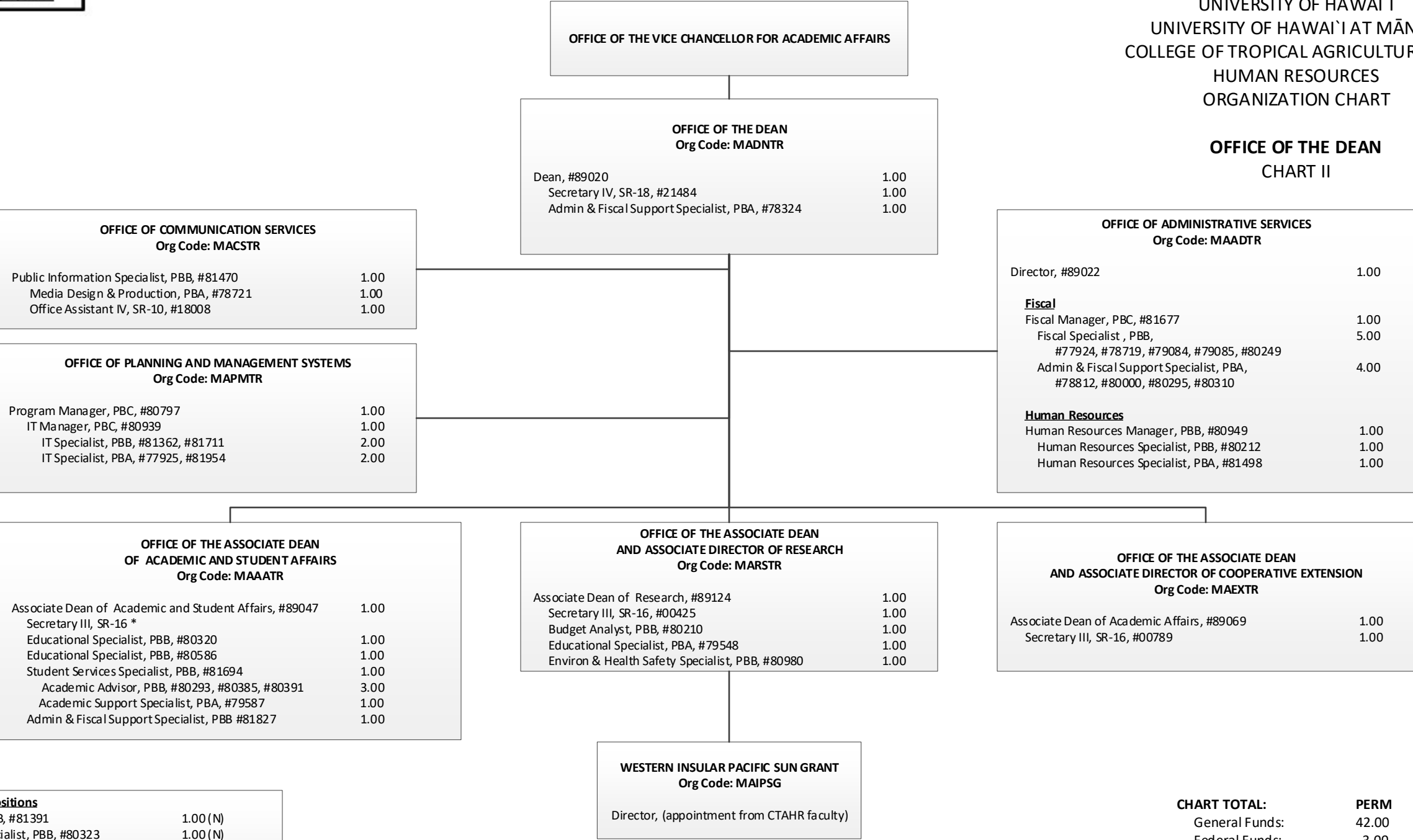
STATE OF HAWAI'I
UNIVERSITY OF HAWAI'I
UNIVERSITY OF HAWAI'I AT MĀNOA
**COLLEGE OF TROPICAL AGRICULTURE AND
HUMAN RESOURCES**
ORGANIZATION CHART
CHART I

DEPARTMENT TOTAL:	PERM	TEMP
General Funds:	225.39	1.00
Special Funds:	2.00	
Federal Funds:	77.06	



STATE OF HAWAI'I
UNIVERSITY OF HAWAI'I
UNIVERSITY OF HAWAI'I AT MĀNOA
COLLEGE OF TROPICAL AGRICULTURE AND
HUMAN RESOURCES
ORGANIZATION CHART

OFFICE OF THE DEAN
CHART II

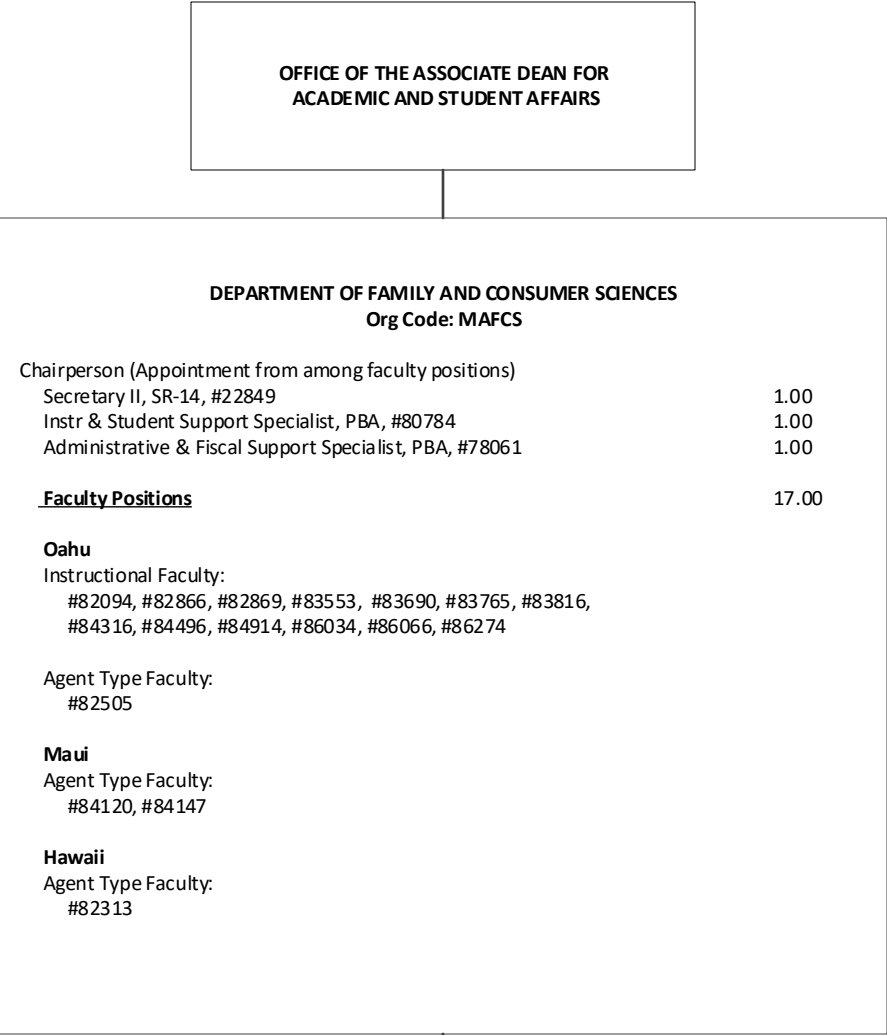


Federal Positions	
Editor, PBB, #81391	1.00 (N)
Fiscal Specialist, PBB, #80323	1.00 (N)
Faculty #84910	1.00 (N)

* To be established

CHART TOTAL:	PERM	TEMP
General Funds:	42.00	--
Federal Funds:	3.00	

DEPARTMENT OF FAMILY AND CONSUMER SCIENCES
CHART III



Federal Positions		
Graduate Assistants		
#88134, #88219, #88410, #88565, #88576	2.50 (N)	
Faculty		
#82074, #83525, #84145, #84610, #84662, #84685, #85421, #85476	8.00 (N)	

4-H OFFICE		
Org Code: MA4H		
Specialist Type Faculty: #83968	1.00	

CENTER ON THE FAMILY		
Org Code: MACOF		
Faculty Position	6.00	
Specialist, #85550		
Specialist Type Faculty: #82181, #82238, #84325, #84477		
Research Type Faculty: #84585		
Secretary II, SR-14, #46186	1.00	

CHART TOTAL:	PERM	TEMP
General Funds:	28.00	--
Federal Funds:	10.50	

DEPARTMENT OF HUMAN NUTRITION, FOOD AND
ANIMAL SCIENCES
CHART IV

OFFICE OF THE ASSOCIATE DEAN FOR
ACADEMIC AND STUDENT AFFAIRS

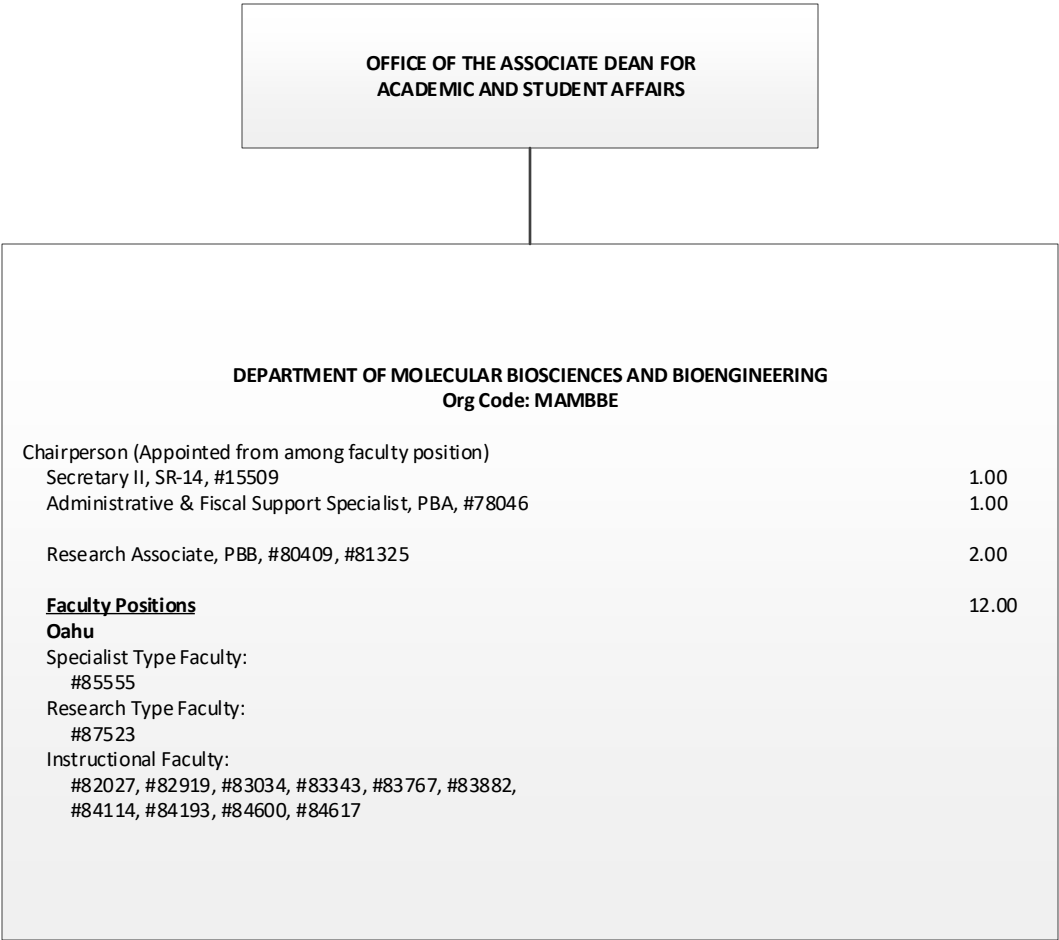
DEPARTMENT OF HUMAN NUTRITION, FOOD AND ANIMAL SCIENCES
Org Code: MAHFAS

Chairperson (Appointed from among faculty position)		
Secretary II, SR-14, #00400		1.00
Office Assistant III, SR-08, #900569		1.00
Administrative & Fiscal Support Specialist, PBA, #80386		1.00
Research Associate, PBB, #80410		1.00
Research Associate, PBA, #77092		1.00
Graduate Assistants		
#85388T		0.50T
Faculty Positions		21.00
Oahu		
Specialist Type Faculty:		
#82107, #84640		
Research Type Faculty:		
#83633, #85576		
Instructional Faculty:		
#82175, #82248, #83012, #83267, #83811, #84306, #84323		
#84449, #84454, #84512, #84919, #84920, #85556, #87552		
Agent Type Faculty:		
Maui		
Agent Type Faculty:		
#82639		
Hawaii		
Specialist Type Faculty:		
#82090		
Agent Type Faculty:		
#83152		
Kauai		
Agent Type Faculty:		

Federal Positions		
Graduate Assistants		
#86249, #88088, #88165, #88303, #88594, #88643,		3.00 (N)
Faculty		
#82363, #82865, #83017, #83728, #84158, #84163, #84276, #84297, #84439,		9.00 (N)

CHART TOTAL:	PERM	TEMP
General Funds:	26.00	0.50T
Federal Funds:	12.00	

DEPARTMENT OF MOLECULAR BIOSCIENCES AND
BIOENGINEERING
CHART V



Federal Positions		
Graduate Assistants		
#88486, #88494, #88509, #88630	2.00	(N)
Faculty		
#82224, #82848, #85151	3.00	(N)

CHART TOTAL:	PERM	TEMP
General Funds:	16.00	--
Federal Funds:	5.00	

STATE OF HAWAI`I
UNIVERSITY OF HAWAI`I
UNIVERSITY OF HAWAI`I AT MĀNOA
COLLEGE OF TROPICAL AGRICULTURE AND
HUMAN RESOURCES
ORGANIZATION CHART

DEPARTMENT OF NATURAL RESOURCES AND
ENVIRONMENTAL MANAGEMENT
CHART VI

OFFICE OF THE ASSOCIATE DEAN FOR
ACADEMIC AND STUDENT AFFAIRS

DEPARTMENT OF NATURAL RESOURCES AND ENVIRONMENTAL MANAGEMENT Org Code: MANREM		
Chairperson (Appointed from among faculty position) Secretary II, SR-14, #05838		1.00
Graduate Assistants: #85545T		0.50T
Faculty Positions		13.75
Oahu		
Specialist Type Faculty: #83770		
Instructional Faculty: #82432, #82516, #83117, #83629, #83666, #83785, #83938, #84354, #84627, #86242, #85373 (.75)		
Agent Type Faculty:		
Maui		
Hawaii		
Specialist Type Faculty: #84171		
Agent Type Faculty: #84045		

Federal Positions		
Graduate Assistants #86220, #88028, #88181, #88431	2.00 (N)	
Faculty #82058, #83459, #83824, #83848, #84488, #84668, #85336	7.00 (N)	

CHART TOTAL:	PERM	TEMP
General Funds:	14.75	0.50T
Federal Funds:	9.00	

OFFICE OF THE ASSOCIATE DEAN FOR
ACADEMIC AND STUDENT AFFAIRS

STATE OF HAWAI'I
UNIVERSITY OF HAWAI'I
UNIVERSITY OF HAWAI'I AT MĀNOA
COLLEGE OF TROPICAL AGRICULTURE AND
HUMAN RESOURCES
ORGANIZATION CHART

DEPARTMENT OF PLANT AND ENVIRONMENTAL
PROTECTION SCIENCES
CHART VII

DEPARTMENT OF PLANT AND ENVIRONMENTAL PROTECTION SCIENCES
Org Code: MAPEPS

Chairperson (Appointed from among faculty position)	
Secretary II, SR-14, #07477	1.00
Office Assistant III, SR-08, #00794	1.00
Administrative & Fiscal Support Specialist, PBA, #77864	1.00
Research Associate, PBB, #80388, #81311	2.00
Research Associate, PBA, #81313	1.00
Agr Research Technician IV, SR-14, #24270	1.00
Faculty Positions	14.00
Oahu	
Specialist Type Faculty: #83320, #84321, #84911	
Research Type Faculty: #82047, #82139, #83067, #83184, #83260, #83742, #84041	
Instructional Faculty: #82976, #84138, #85510	
Agent Type Faculty:	
Maui	
Hawaii	
Kauai	
Agent Type Faculty: #85410	

Federal Positions	
Graduate Assistants #88241, #84932,	1.00 (N)
Faculty #82196, #82722, #83462, #84006, #84489, #85505, #85526, #85530, #85538, #85547, #85551 (.56),	10.56 (N)
Research Associate #81178	1.00 (N)
Agr Research Tech III, SR-11, #24269	1.00 (N)

* Abolished position #85551 (0.44)

CHART TOTAL:	PERM	TEMP
General Funds:	21.44	--
Federal Funds:	13.56	

STATE OF HAWAI`I
UNIVERSITY OF HAWAI`I
UNIVERSITY OF HAWAI`I AT MĀNOA
COLLEGE OF TROPICAL AGRICULTURE AND
HUMAN RESOURCES
ORGANIZATION CHART

OFFICE OF THE ASSOCIATE DEAN FOR
ACADEMIC AND STUDENT AFFAIRS

DEPARTMENT OF TROPICAL PLANT AND SOIL SCIENCES
CHART VIII

DEPARTMENT OF TROPICAL PLANT AND SOIL SCIENCES		
Org Code: MATPSS		
Chairperson (Appointed from among faculty position)		
Secretary II, SR-14, #00793		1.00
Administrative & Fiscal Support Specialist, PBA, #77795		1.00
Research Associate, PBB, #80270		1.00
Agr Research Technician V, SR-16, #11019		1.00
Agr Research Technician IV, SR-14 *		
Educational Specialist, PBA, #81739		1.00
Faculty Positions		27.00
Oahu		
Specialist Type Faculty:		
#82598, #83159, #83304, #83388		
Research Type Faculty:		
#82023, #82464, #82699, #83515, #84420,		
#84481, #85877, #86275		
Instructional Type Faculty:		
#83286		
Agent Type Faculty:		
#84070, #85435, #85460, #85528		
Maui		
Agent Type Faculty:		
#85392, #85404, #85423, #85459, #85477		
Hawaii		
Agent Type Faculty:		
#82485, #82951, #84648		
Kauai		
Agent Type Faculty:		
#85371, #85387		

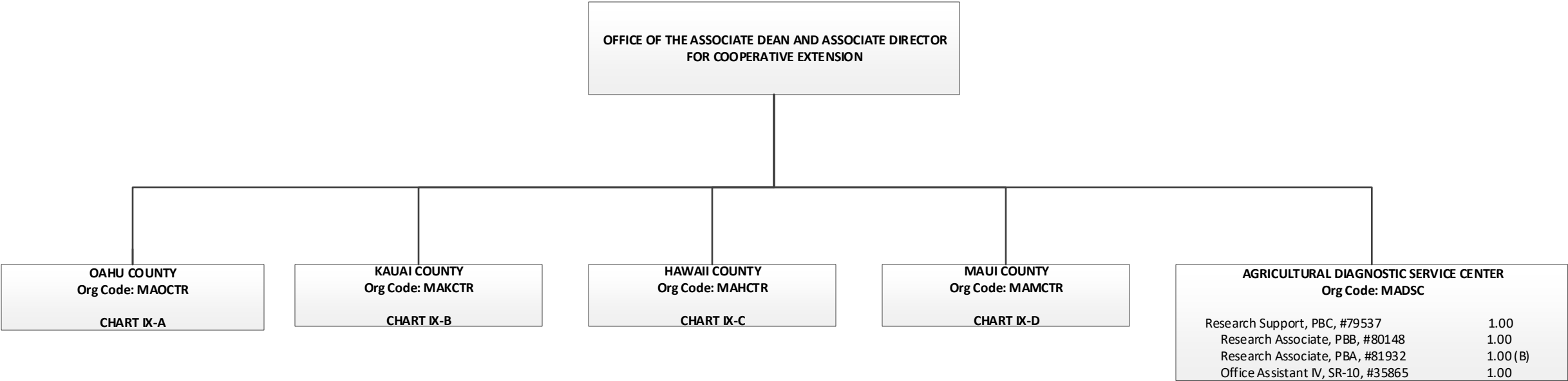
* To be established
** Abolished position #85563 (0.20)

Federal Positions		
Graduate Assistants		
#88171, #88423		1.00 (N)
Faculty		
#82687, #82704, #82747, #82758, #82881, #82985, #83054, #83740, #84075, #84501, #84916, #85440, #85778, #87584,		14.00 (N)
Agr Research Tech IV, SR-14, #15512		1.00 (N)
Office Assistant IV, SR-10, #399		1.00 (N)

CHART TOTAL:	PERM	TEMP
General Funds:	32.20	--
Federal Funds:	17.00	

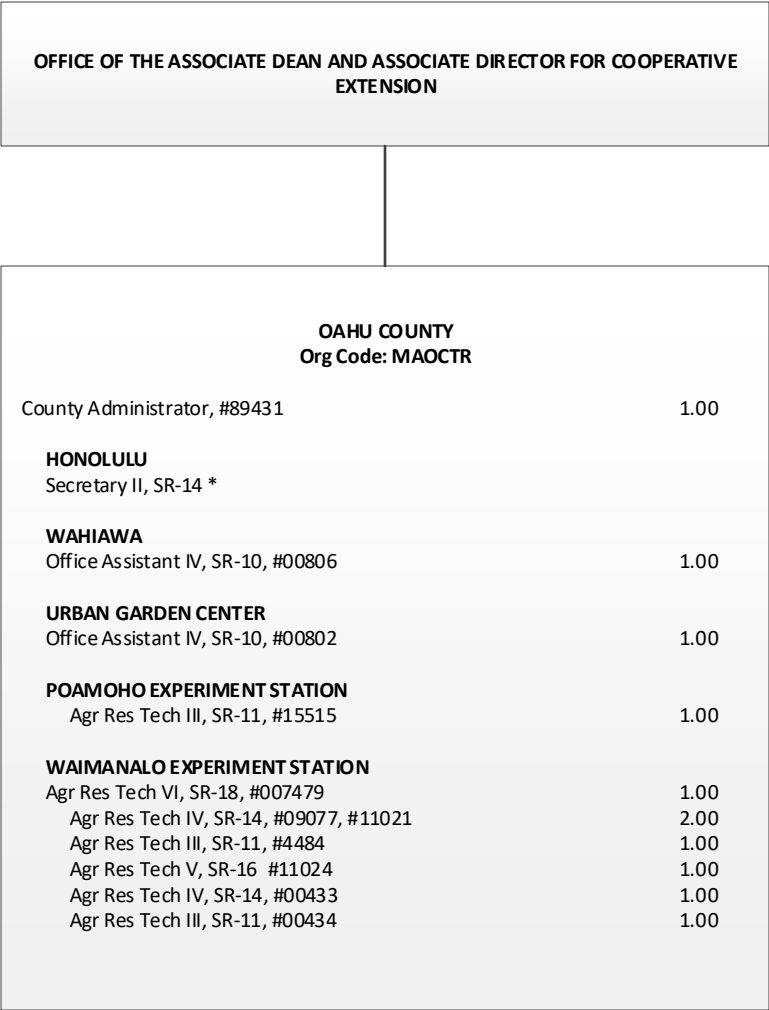
STATE OF HAWAI`I
UNIVERSITY OF HAWAI`I
UNIVERSITY OF HAWAI`I AT MĀNOA
COLLEGE OF TROPICAL AGRICULTURE AND
HUMAN RESOURCES
ORGANIZATION CHART

COUNTY ADMINISTRATION
CHART IX



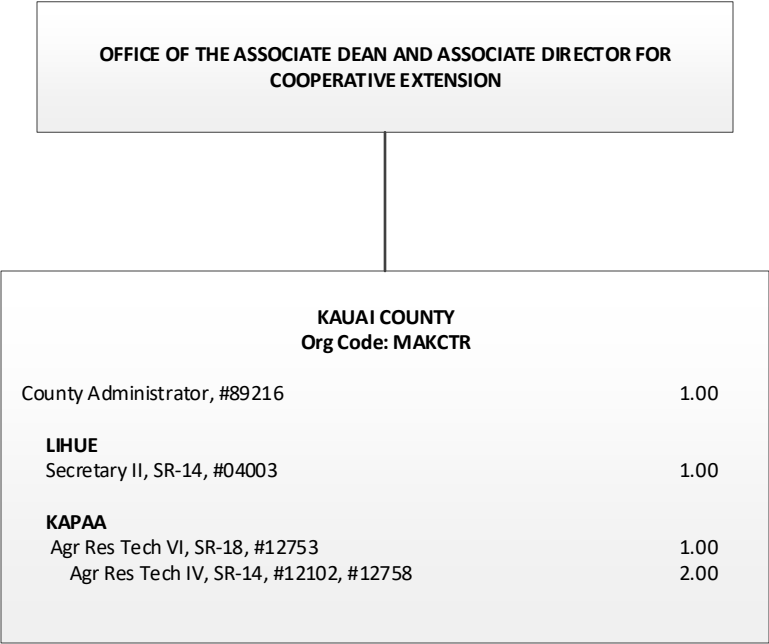
STATE OF HAWAI`I
UNIVERSITY OF HAWAI`I
UNIVERSITY OF HAWAI`I AT MĀNOA
COLLEGE OF TROPICAL AGRICULTURE AND
HUMAN RESOURCES
ORGANIZATION CHART

OAHU COUNTY
CHART IX-A



STATE OF HAWAI`I
UNIVERSITY OF HAWAI`I
UNIVERSITY OF HAWAI`I AT MĀNOA
COLLEGE OF TROPICAL AGRICULTURE AND
HUMAN RESOURCES
ORGANIZATION CHART

KAUAI COUNTY
CHART IX-B



Federal Positions		
Agr Res Tech III, SR-11, #12761	1.00	(N)

CHART TOTAL:	PERM	TEMP
General Funds:	5.00	--
Federal Funds:	1.00	

OFFICE OF THE ASSOCIATE DEAN AND ASSOCIATE DIRECTOR FOR COOPERATIVE
EXTENSION

STATE OF HAWAI`I
UNIVERSITY OF HAWAI`I
UNIVERSITY OF HAWAI`I AT MĀNOA
COLLEGE OF TROPICAL AGRICULTURE AND
HUMAN RESOURCES
ORGANIZATION CHART

HAWAII COUNTY	
Org Code: MAHCTR	
County Administrator, #89213	1.00
Operations Coordinator, PBB	
KOMO HANA	
Secretary II, SR-14, #13871	1.00
Office Assistant III, SR-08, #00791	1.00
KONA	
Office Assistant IV, SR-10, #900583	1.00
KAMUELA	
Office Assistant IV, SR-10, #00799	1.00
EAST HAWAII	
Agr Res Tech VI, SR-18, #12099	1.00
WAI AKEA	
Agr Res Tech V, SR-16, #14166	1.00
Agr Res Tech III, SR-11, #15497	1.00
VOLCANO	
Agr Res Tech V, SR-16, #13206	1.00
MALAMA-KI	
WEST HAWAII	
Agr Res Tech VI, SR-18, #13530	1.00
MEALANI	
Agr Res Tech V, SR-16, #12094	1.00
Agr Res Tech IV, SR-14, #12100	1.00
Agr Res Tech III, SR-11, #397, #44867, #44868	3.00
HAMAKUA	
KONA	
Agr Res Tech V, SR-16, #00409	1.00
Agr Res Tech III, SR-11, #22912	1.00

CHART TOTAL:	PERM	TEMP
General Funds:	17.00	--
Federal Funds:	--	

1/ Operations Coordinator in Hawai'i County Technical Support abolished

STATE OF HAWAI`I
UNIVERSITY OF HAWAI`I
UNIVERSITY OF HAWAI`I AT MĀNOA
COLLEGE OF TROPICAL AGRICULTURE AND
HUMAN RESOURCES
ORGANIZATION CHART

MAUI COUNTY
CHART IX-D

OFFICE OF THE ASSOCIATE DEAN AND ASSOCIATE DIRECTOR FOR
COOPERATIVE EXTENSION

MAUI COUNTY Org Code: MAMCTR	
County Administrator, #89215	1.00
KAHULUI	
Secretary II, SR-14, #00792	1.00
KULA	
Office Assistant IV, SR-10, #13714	1.00
Agr Res Tech VI, SR-18 *	
Agr Res Tech V, SR-16, #12901	1.00
Agr Res Tech IV, SR-14, #00436	1.00
Agr Res Tech III, SR-11, #00404, #00406, #12900	3.00
MOLOKAI	
Agr Res Tech IV, SR-14, #36749	1.00

* To be established

CHART TOTAL:	PERM	TEMP
General Funds:	9.00	--
Federal Funds:	2.00	

Federal Positions	
Agr Res Tech VI, SR-18, #415	1.00 (N)
Agr Res Tech IV, SR-14, #12898	1.00 (N)