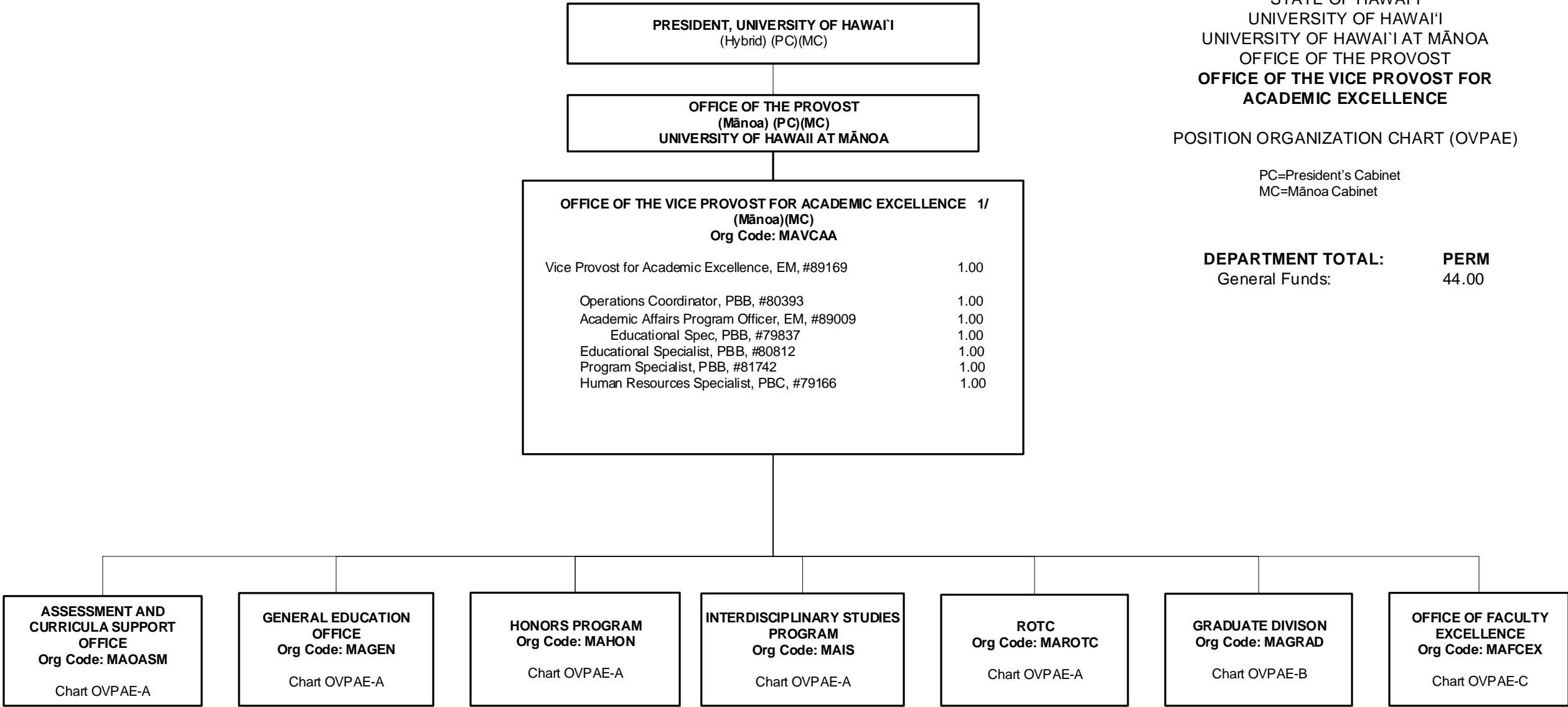


STATE OF HAWAI'I  
UNIVERSITY OF HAWAI'I  
UNIVERSITY OF HAWAI'I AT MĀNOA  
OFFICE OF THE PROVOST  
OFFICE OF THE VICE PROVOST FOR  
ACADEMIC EXCELLENCE

POSITION ORGANIZATION CHART (OVPAE)

PC=President's Cabinet  
MC=Mānoa Cabinet

DEPARTMENT TOTAL: PERM  
General Funds: 44.00

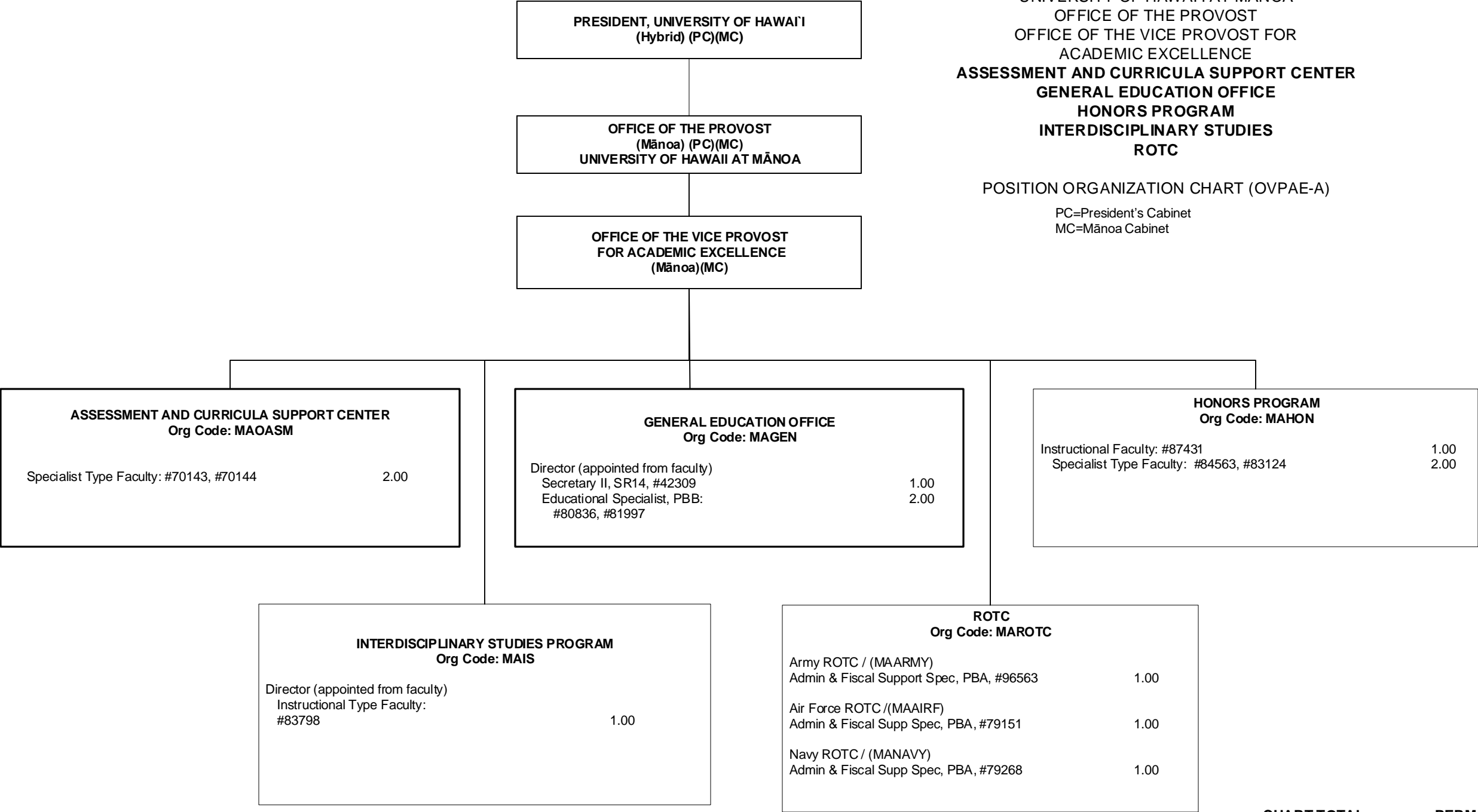


1/ Collaborate with Study Abroad  
Positions to be redescribed, as appropriate

STATE OF HAWAI'I  
UNIVERSITY OF HAWAI'I  
UNIVERSITY OF HAWAI'I AT MĀNOA  
OFFICE OF THE PROVOST  
OFFICE OF THE VICE PROVOST FOR  
ACADEMIC EXCELLENCE  
ASSESSMENT AND CURRICULA SUPPORT CENTER  
GENERAL EDUCATION OFFICE  
HONORS PROGRAM  
INTERDISCIPLINARY STUDIES  
ROTC

POSITION ORGANIZATION CHART (OVPAE-A)

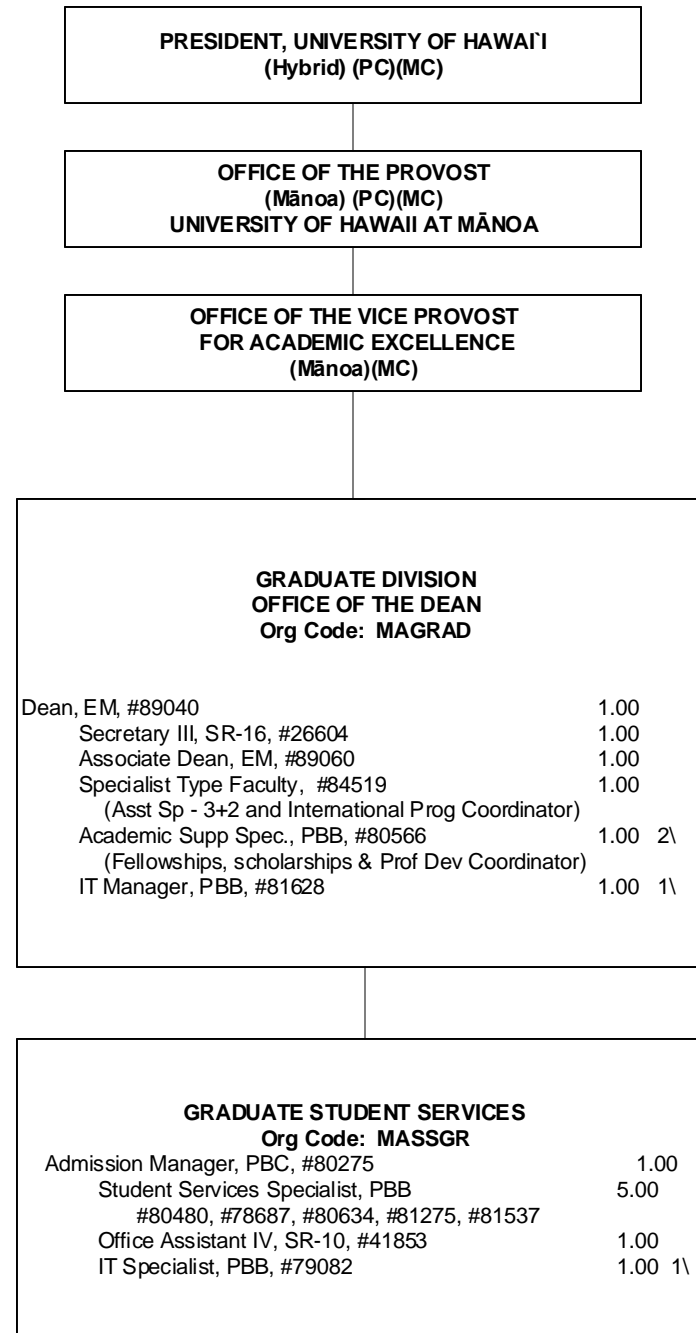
PC=President's Cabinet  
MC=Mānoa Cabinet



STATE OF HAWAII  
UNIVERSITY OF HAWAII  
UNIVERSITY OF HAWAII AT MĀNOA  
OFFICE OF THE PROVOST  
OFFICE OF THE VICE PROVOST FOR  
ACADEMIC EXCELLENCE  
**OFFICE OF GRADUATE DIVISION**

POSITION ORGANIZATION CHART (OVPAE-B)

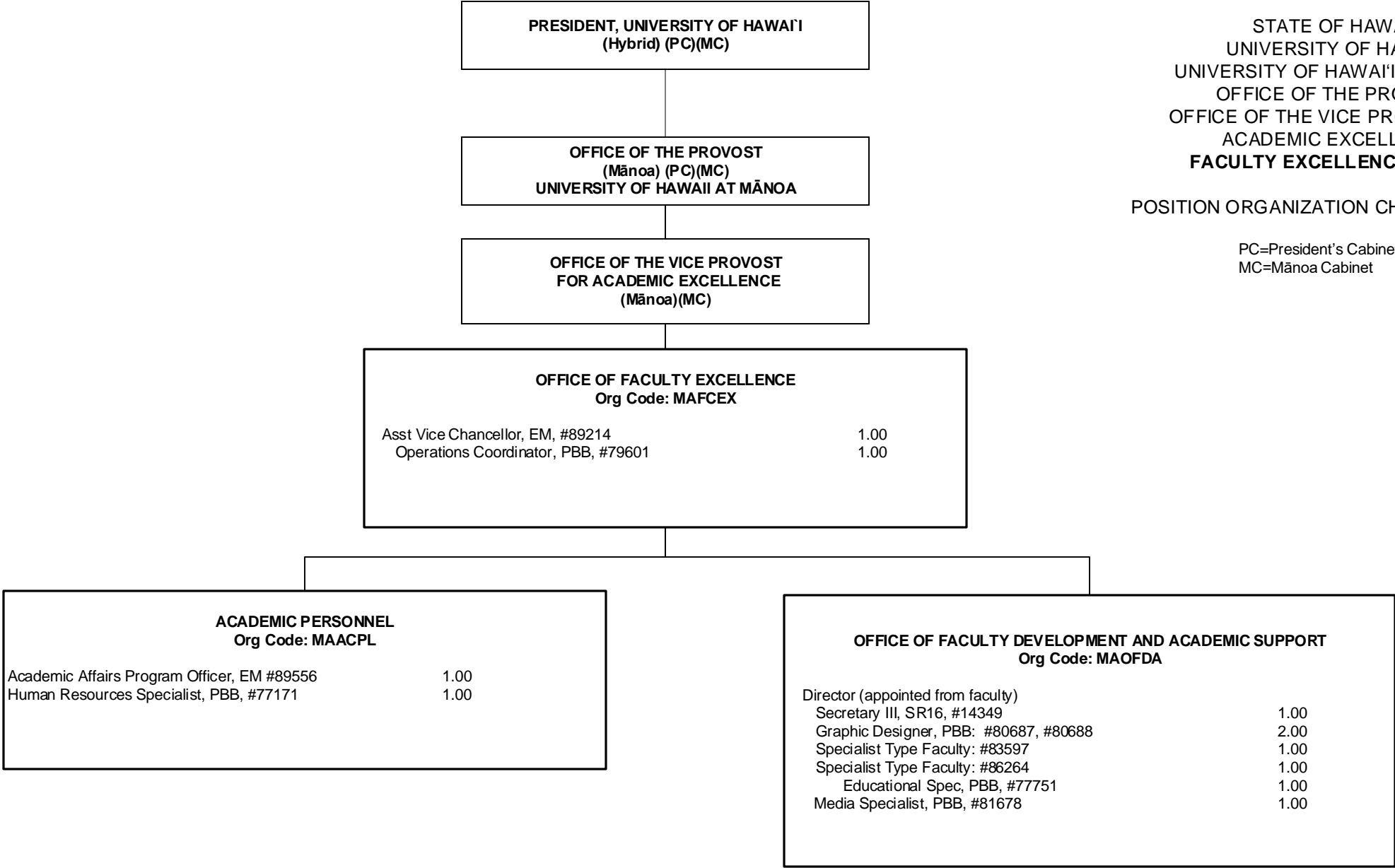
PC=President's Cabinet  
MC=Mānoa Cabinet



1\Graduate Division IT Specialists (#81628 and #79082)  
to provide collaborative support to initiatives and operations that  
involve graduate student recruitment, admissions and services,  
research opportunities and scholarship.

2\ Graduate Division Academic Support Specialist (#80566) to provide collaborative support to OVPRS on graduate research opportunities and postdoctoral affairs.

Positions to be redescribed, as appropriate



STATE OF HAWAI'I  
UNIVERSITY OF HAWAI'I  
UNIVERSITY OF HAWAI'I AT MĀNOA  
OFFICE OF THE PROVOST  
OFFICE OF THE VICE PROVOST FOR  
ACADEMIC EXCELLENCE  
**FACULTY EXCELLENCE OFFICE**

POSITION ORGANIZATION CHART (OVPAE-C)

PC=President's Cabinet  
MC=Mānoa Cabinet

Positions to be redescribed, as appropriate