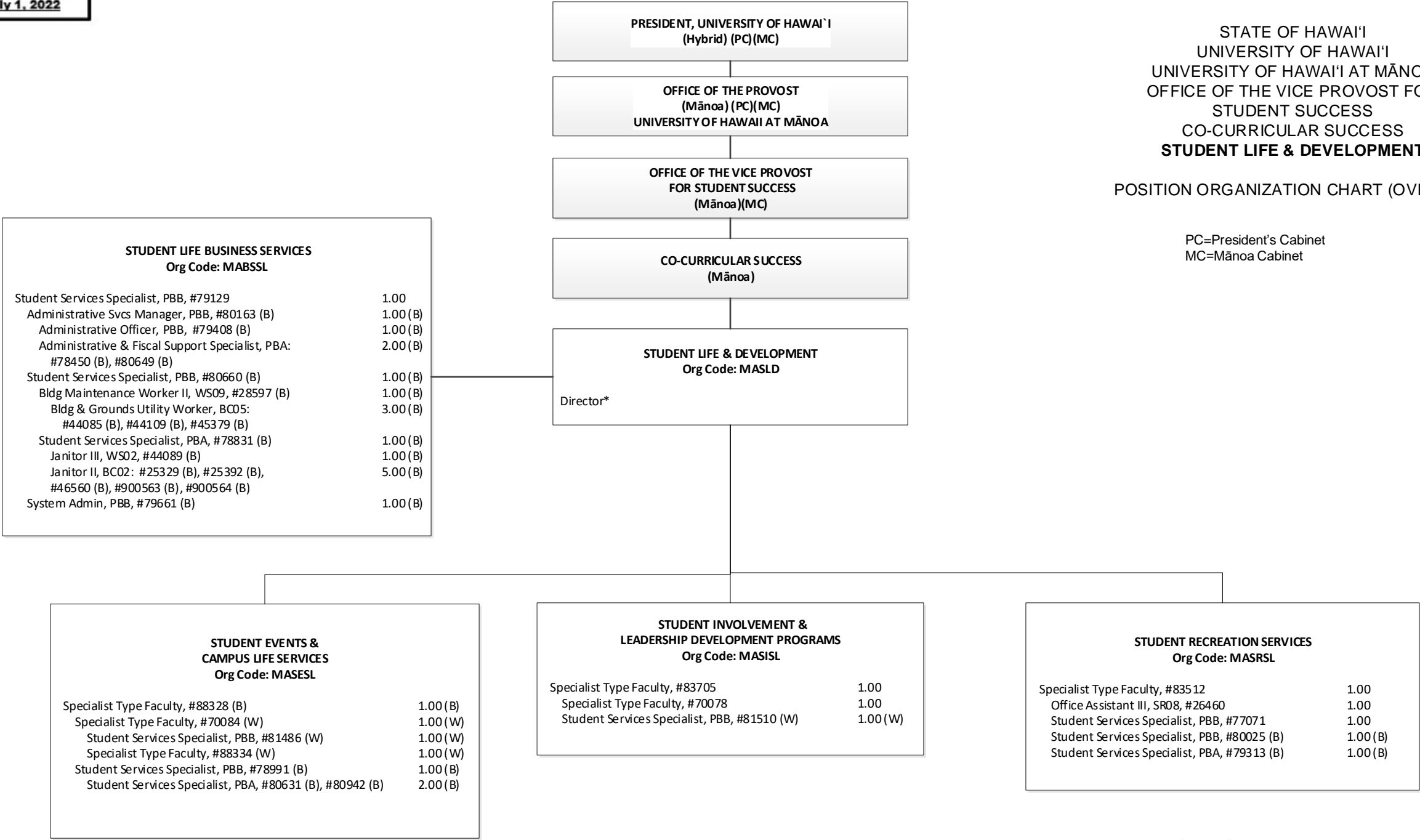


1\ #89309 in MAVCS also serves as Dean of Students and oversees Student Co-Curricular Success.
2\ Collaborate with other equity related programs at the campus level.
3\ Onboarding functions within Student Co-Curricular Success, and Commencement functions within Student Academic Success, with positions to be established when budget permits.

STATE OF HAWAI'I
UNIVERSITY OF HAWAI'I
UNIVERSITY OF HAWAI'I AT MĀNOA
OFFICE OF THE VICE PROVOST FOR
STUDENT SUCCESS
CO-CURRICULAR SUCCESS
STUDENT LIFE & DEVELOPMENT

POSITION ORGANIZATION CHART (OVPSS-A)

PC=President's Cabinet
MC=Mānoa Cabinet



* Director, to be established when budget permits

CHART TOTAL:	PERM	TEMP
General Funds:	6.00	--
Special Funds (B):	23.00	--
Revolving Funds (W):	4.00	--

STATE OF HAWAI'I
UNIVERSITY OF HAWAI'I
UNIVERSITY OF HAWAI'I AT MĀNOA
OFFICE OF THE VICE PROVOST FOR
STUDENT SUCCESS
CO-CURRICULAR SUCCESS
MĀNOA CAREER CENTER

POSITION ORGANIZATION CHART (OVPSS-B)

PC=President's Cabinet
MC=Mānoa Cabinet

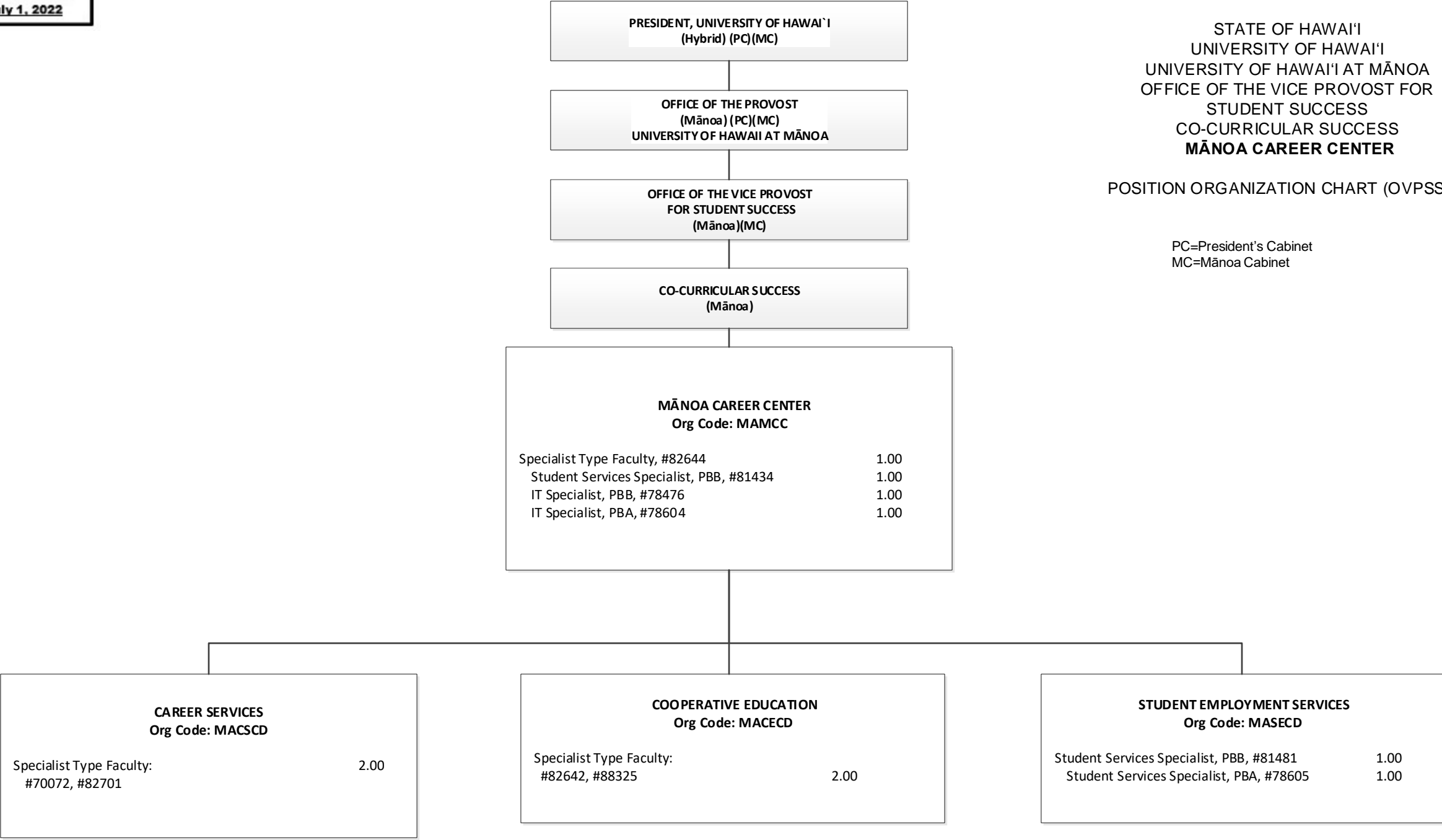
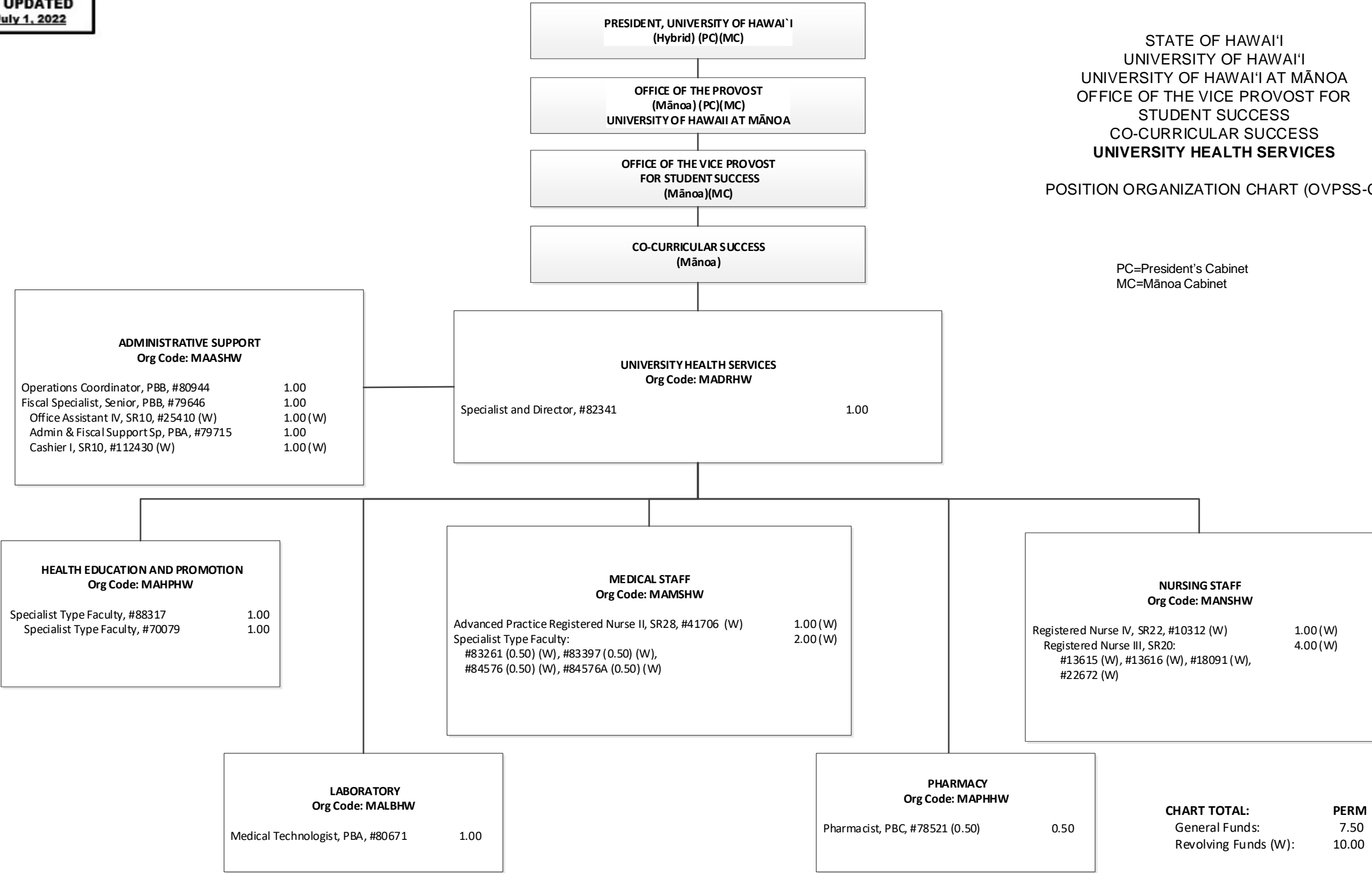


CHART TOTAL:	PERM	TEMP
General Funds:	10.00	--

STATE OF HAWAI'I
UNIVERSITY OF HAWAI'I
UNIVERSITY OF HAWAI'I AT MĀNOA
OFFICE OF THE VICE PROVOST FOR
STUDENT SUCCESS
CO-CURRICULAR SUCCESS
UNIVERSITY HEALTH SERVICES

POSITION ORGANIZATION CHART (OVPSS-C)

PC=President's Cabinet
MC=Mānoa Cabinet

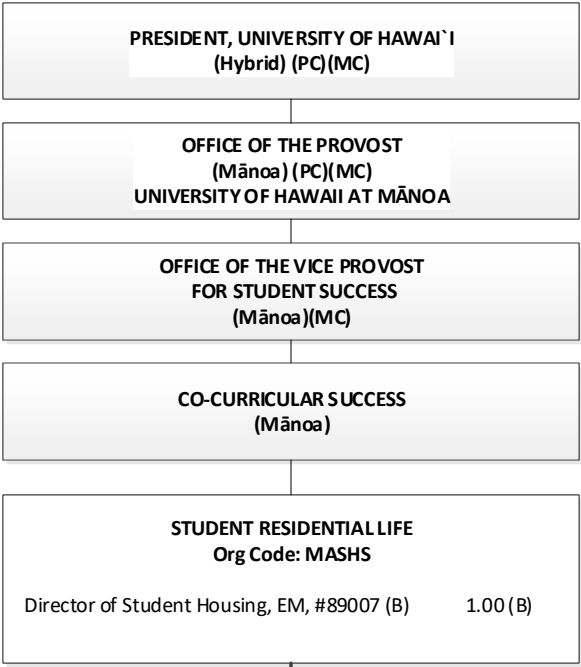


STATE OF HAWAI'I
UNIVERSITY OF HAWAI'I
UNIVERSITY OF HAWAI'I AT MĀNOA
OFFICE OF THE VICE PROVOST FOR
STUDENT SUCCESS
CO-CURRICULAR SUCCESS
STUDENT RESIDENTIAL LIFE

POSITION ORGANIZATION CHART (OVPSS-D)

PC=President's Cabinet
MC=Mānoa Cabinet

OPERATIONS Org Code: MAOPSH		
Auxiliary & Facilities Services Manager, PBB, #80629 (B)	1.00 (B)	
Auxiliary & Facilities Services Officer, PBA, #78141 (B)	1.00 (B)	
Auxiliary & Facilities Services Officer, PBA, #81942 (B)	1.00 (B)	
Registered Architect, PBB, #77005 (B)	1.00 (B)	
MAINTENANCE STAFF:		
Auxiliary & Facilities Services Officer, PBB, #79641 (B)	1.00 (B) 1\	
Building Maintenance Supervisor I, F109, #900548 (B)	1.00 (B)	
Building Maintenance Worker I, BC09: #13578 (B), #31245 (B), #110585 (B)	3.00 (B) 2\	
#900513, #900514	2.00	
Plumber I, BC10, #900603 (B)	1.00 (B)	
Electrician I, BC10, #900604 (B)	1.00 (B)	
CUSTODIAL & GROUNDS STAFF:		
Auxiliary & Facilities Services Officer, #99075F (B)	1.00 (B) 1\	
Janitor III, WS02, #900850 (B), #900851 (B)	2.00 (B)	
Janitor II, BC02: #900852 (B), #900853 (B), #900854 (B), #900855 (B), #900856 (B), #900857 (B), #900858 (B), #900859 (B), #900860 (B), #900861 (B), #900862 (B), #900863 (B), #900864 (B), #900865 (B), #900866 (B), #900867 (B)	16.00 (B)	
Groundskeeper II, WS02, #24251 (B)	1.00 (B)	
Groundskeeper I, BC02, #31246 (B)	1.00 (B)	
OPERATIONS SUPPORT:		
Environmental & Health Safety Sp, PBA, #81680 (B)	1.00 (B)	
General Laborer II, BC-03: #900918 (B), #900919 (B), #900920 (B), #900921 (B), #900922 (B), #900923 (B)	6.00 (B)	



ADMINISTRATION Org Code: MAADSH		
Administrative Svcs Mgr, PBB, #81612 (B)	1.00 (B)	
FISCAL:		
Fiscal Specialist, Senior, PBB, #80193 (B)	1.00 (B)	
Fiscal Specialist, PBB, #77029 (B)	1.00 (B)	
Cashier I, SR10, #28336 (B)	1.00 (B)	
Fiscal Specialist, PBB, #80298 (B)	1.00 (B)	
Office Assistant IV, SR10, #18701 (B)	1.00 (B)	
ASSIGNMENTS:		
Administrative Officer, PBB, #79170 (B)	1.00 (B)	
Student Services Specialist, PBA, #78732	1.00	
Student Services Specialist, PBA: #79330 (B), #79885 (B)	2.00 (B)	
CONFERENCES:		
Student Services Specialist, PBB, #80219 (B)	1.00 (B)	
PERSONNEL:		
Human Resources Sp, PBB, #81103 (B)	1.00 (B)	
Human Resources Sp, PBB, #78729	1.00	
INFORMATION TECHNOLOGY:		
IT Specialist, PBB, #78311 (B), #81361 (B)	2.00 (B)	
IT Specialist, PBA, #77097 (B)	1.00 (B)	

RESIDENTIAL LIFE Org Code: MARLSH		
Residence Life Mgr, PBB, #80630 (B)	1.00 (B)	
STUDENT CONDUCT & COMMUNITY STANDARDS:		
Residence Life Specialist, PBB, #81611 (B)	1.00 (B)	
Residence Life Specialist, PBA, #80598 (B)	1.00 (B)	
RESIDENTIAL AREAS:		
Residence Life Specialist, PBB: #80594 (B), #80597 (B), #80825 (B)	3.00 (B)	
Office Assistant III, SR08, #23582 (B)	1.00 (B) 2\	
Residence Life Specialist, PBA: #80924 (B), #80764 (B)	2.00 (B)	
HALL STAFF:		
Residence Life Specialist, PBA: #78542 (B), #78728 (B), #78959 (B), #78960 (B), #78961 (B), #78962 (B), #80595 (B)	7.00 (B)	
#78730, #78731	2.00	

1\ Pending establishment: Auxiliary & Facilities Services Officer, #79641, #99075F
2\ Abolished; count retained: Building Maintenance Worker I, #31242 & Office Assistant III, #28545, 2.00 (B)

CHART TOTAL:	PERM	TEMP
General Funds:	6.00	--
Special Funds (B):	72.00	--

STATE OF HAWAI'I
UNIVERSITY OF HAWAI'I
UNIVERSITY OF HAWAI'I AT MĀNOA
OFFICE OF THE VICE PROVOST FOR
STUDENT SUCCESS
CO-CURRICULAR SUCCESS
COUNSELING & STUDENT DEVELOPMENT
STUDENT CONDUCT
CHILDREN'S CENTER

POSITION ORGANIZATION CHART (OVPSS-E)

PC=President's Cabinet
MC=Mānoa Cabinet

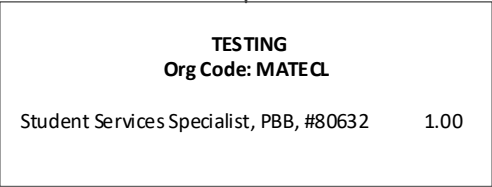
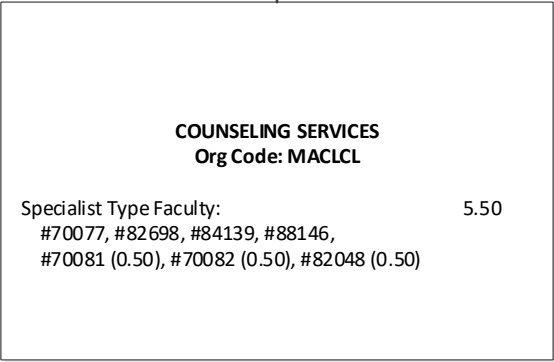
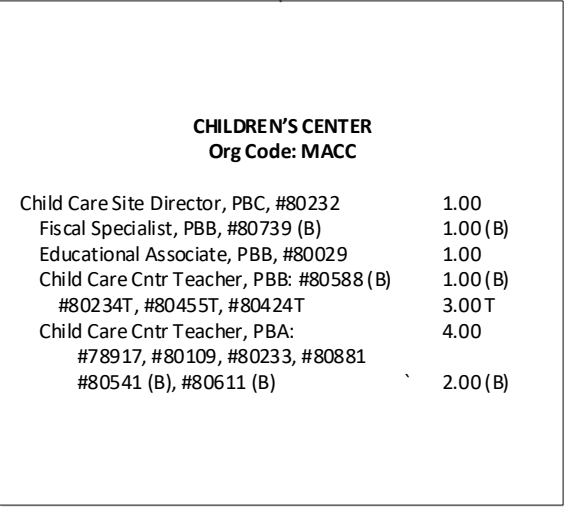
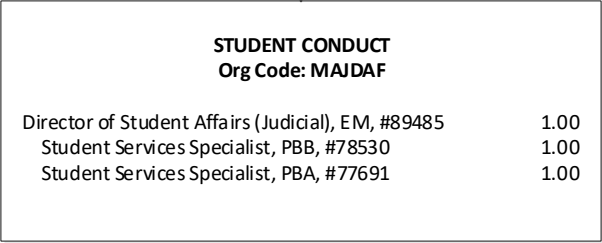
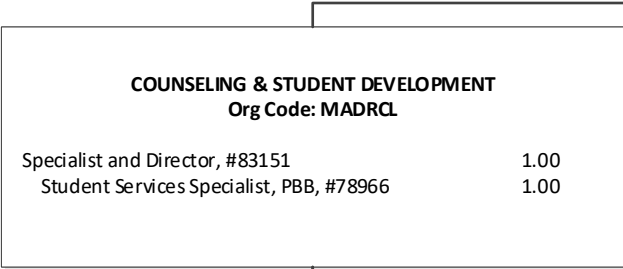
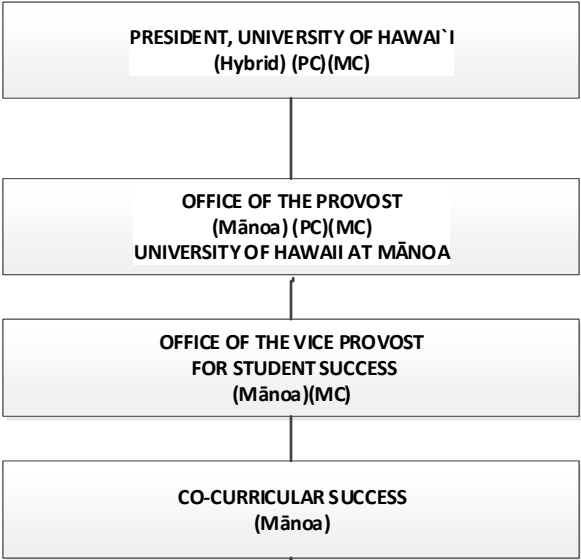
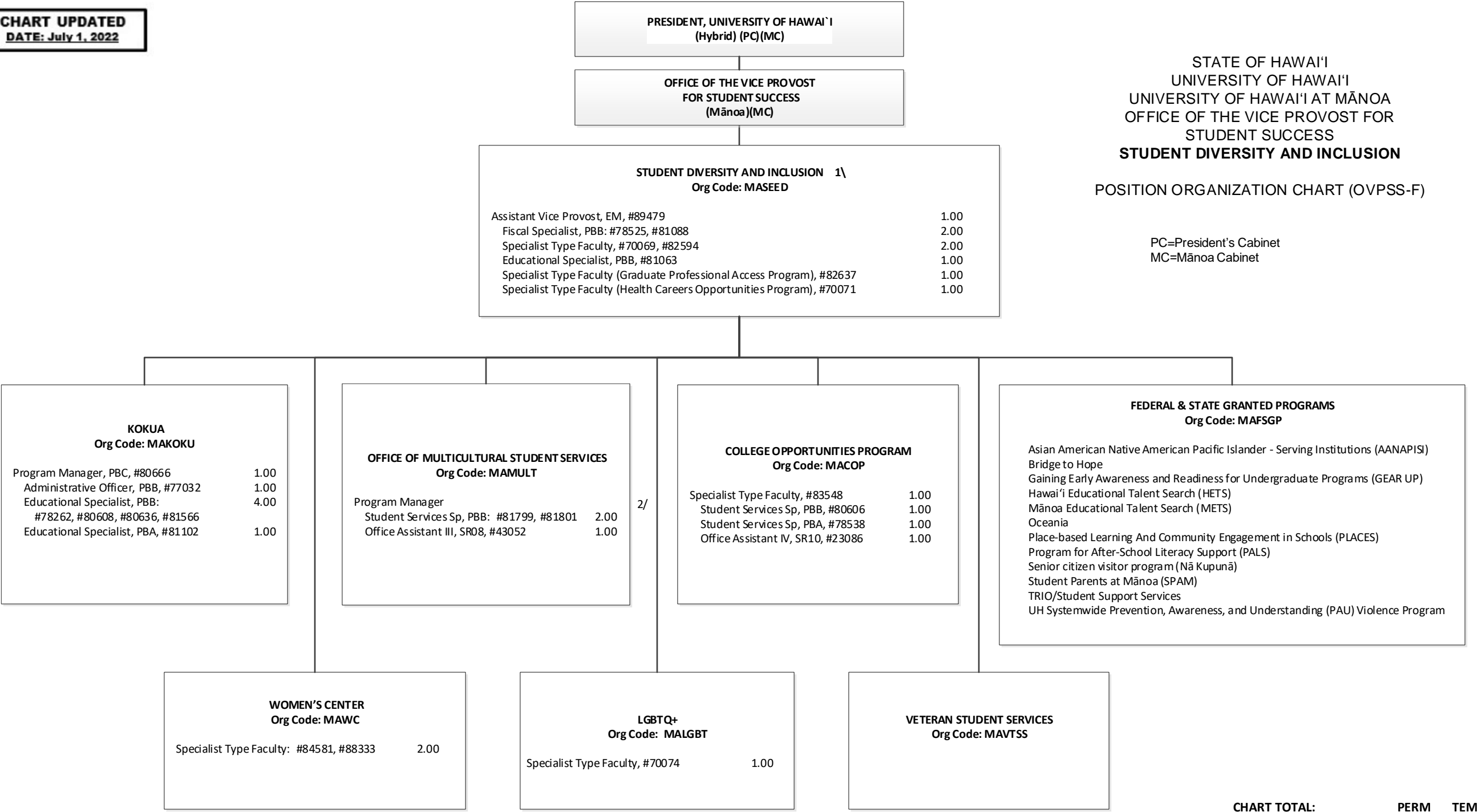


CHART TOTAL:	PERM	TEMP
General Funds:	17.50	3.00
Special Funds (B):	4.00	--



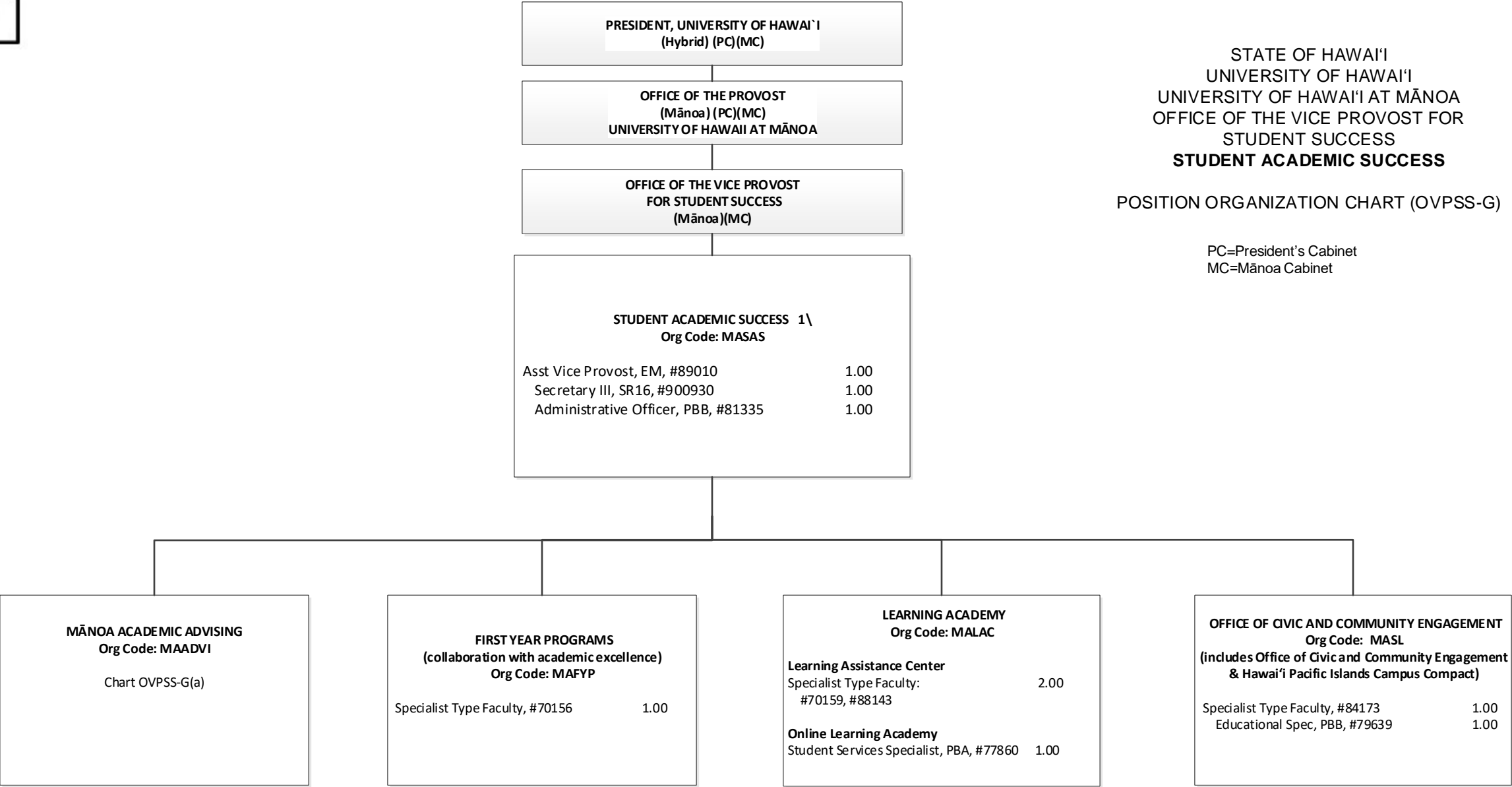
STATE OF HAWAI'I
UNIVERSITY OF HAWAI'I
UNIVERSITY OF HAWAI'I AT MĀNOA
OFFICE OF THE VICE PROVOST FOR
STUDENT SUCCESS
STUDENT DIVERSITY AND INCLUSION

POSITION ORGANIZATION CHART (OVPSS-F)

PC=President's Cabinet
MC=Mānoa Cabinet

CHART TOTAL:	PERM	TEMP
General Funds:	25.00	--

1\ Collaborate with other equity related programs at the campus level.
2\ Program Manager, #80517 in Office of Multicultural Student Services swept into Mānoa Pool 10/28/21.

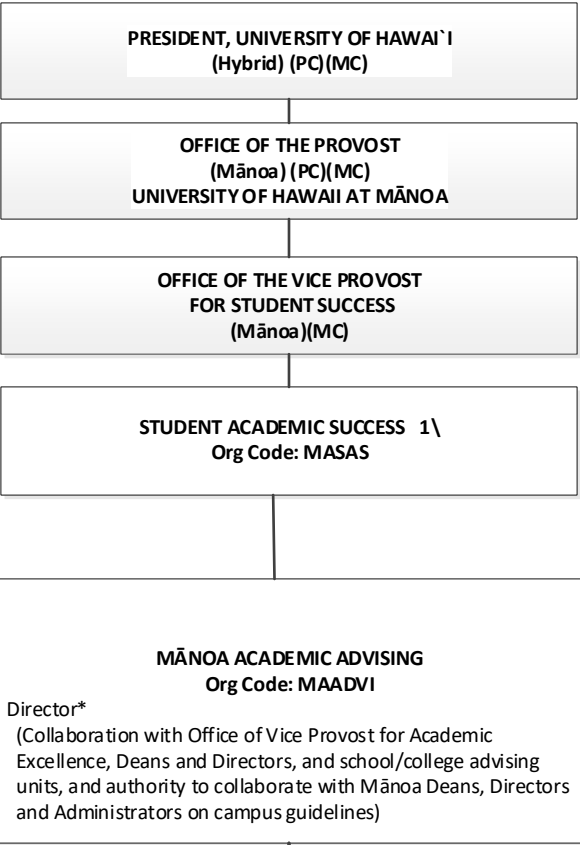


STATE OF HAWAI'I
UNIVERSITY OF HAWAI'I
UNIVERSITY OF HAWAI'I AT MĀNOA
OFFICE OF THE VICE PROVOST FOR
STUDENT SUCCESS
STUDENT ACADEMIC SUCCESS
POSITION ORGANIZATION CHART (OVPSS-G)

PC=President's Cabinet
MC=Mānoa Cabinet

1\ Onboarding functions within Student Co-Curricular Success, and Commencement functions within Student Academic Success, with positions to be established when budget permits.

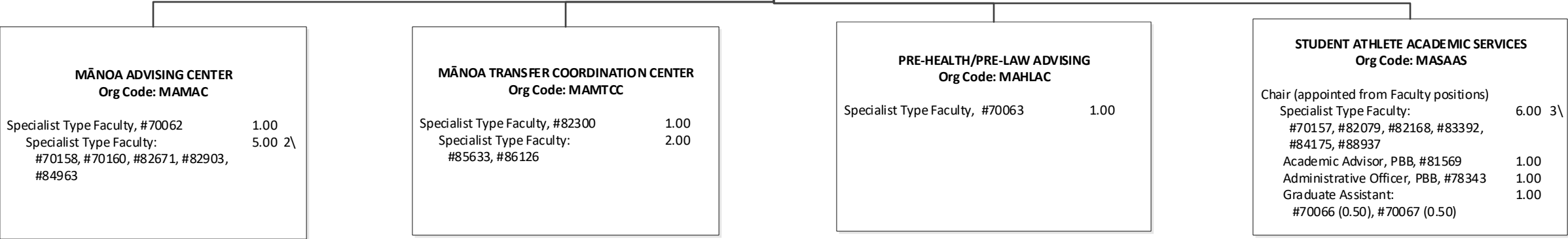
CHART TOTAL:	PERM	TEMP
General Funds:	9.00	--



STATE OF HAWAI'I
UNIVERSITY OF HAWAI'I
UNIVERSITY OF HAWAI'I AT MĀNOA
OFFICE OF THE VICE PROVOST FOR
STUDENT SUCCESS
STUDENT ACADEMIC SUCCESS

POSITION ORGANIZATION CHART (OVPSS-G(a))

PC=President's Cabinet
MC=Mānoa Cabinet



* Director, to be established when budget permits
1\ Onboarding functions within Student Co-Curricular Success, and Commencement functions within Student Academic Success, with positions to be established when budget permits.
2\ Specialist Type Faculty, #70155 in Mānoa Advising Center swept into Mānoa Pool 10/28/21
3\ Specialist Type Faculty, #82079 in Student Athlete Academic Services swept into Mānoa Pool 10/28/21, restored 3/21/22

CHART TOTAL:	PERM	TEMP
General Funds:	19.00	--