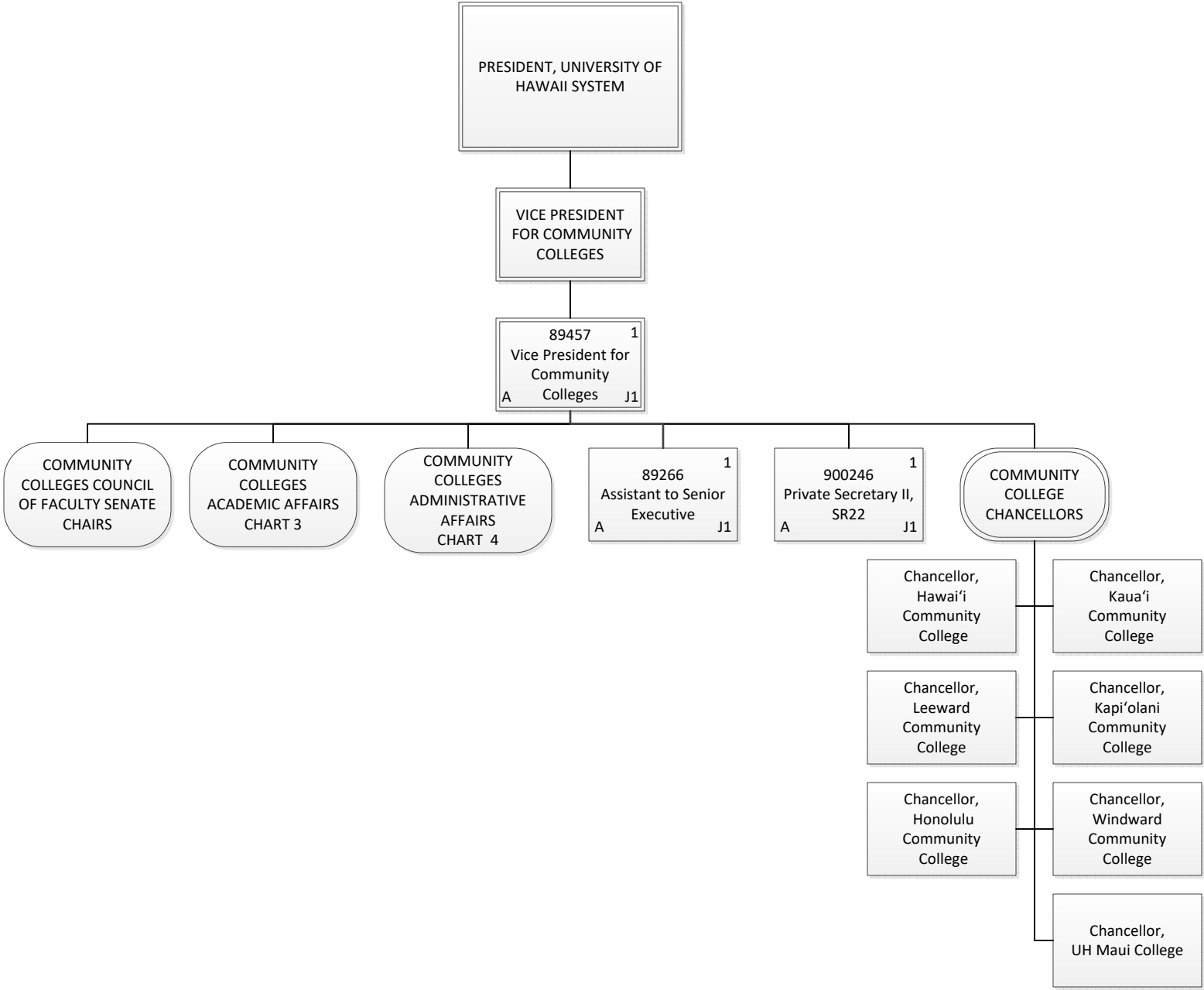
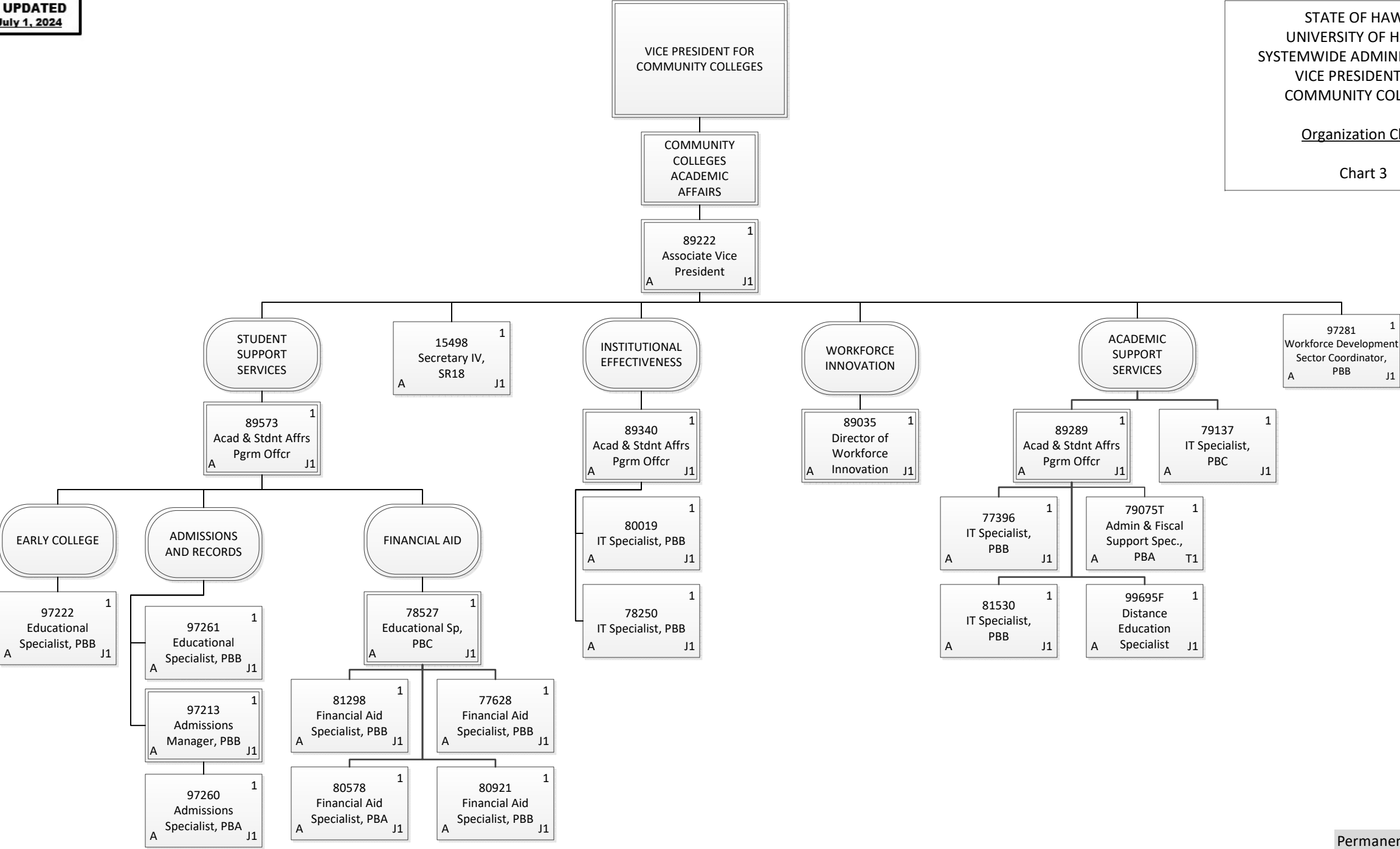


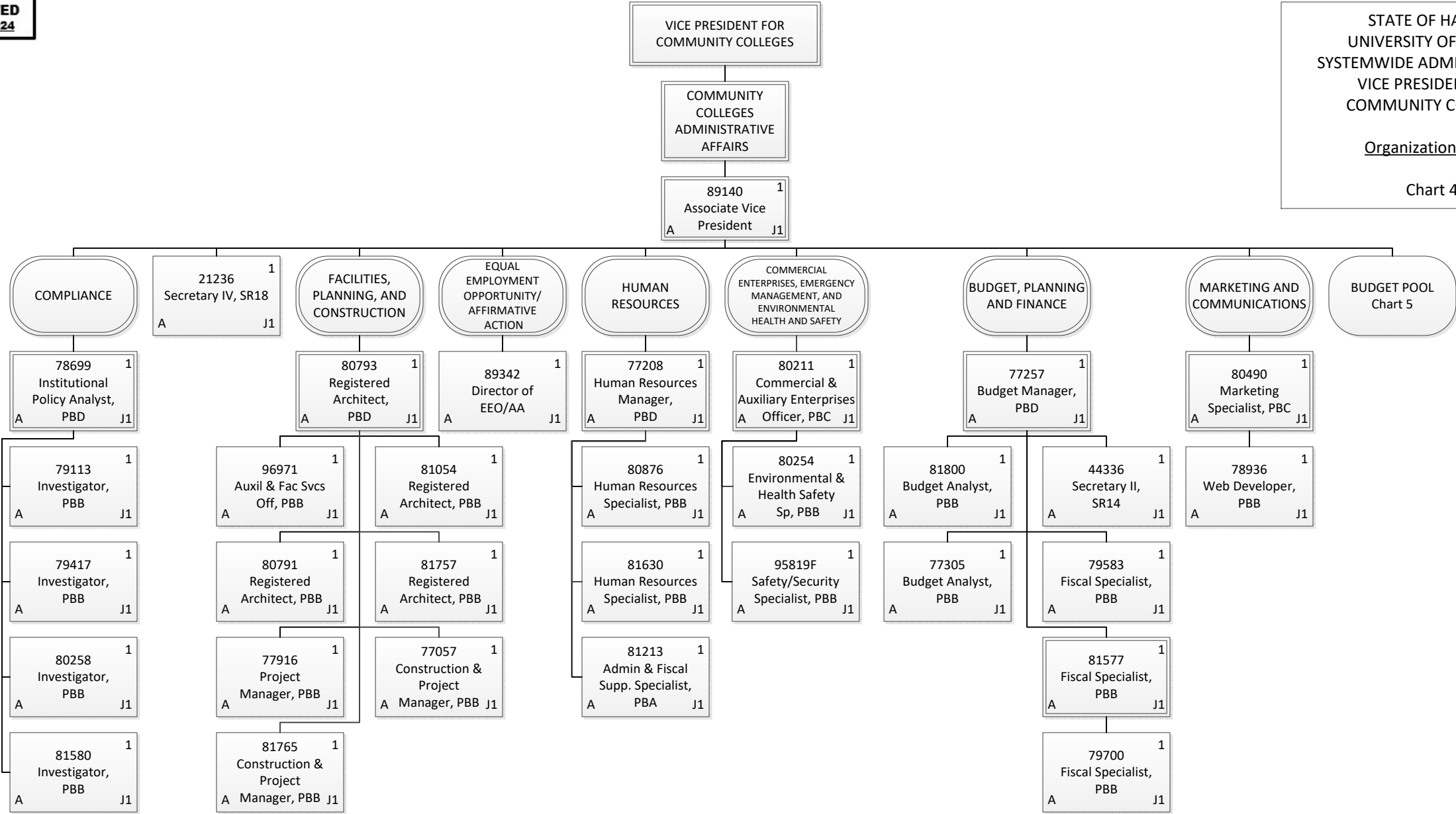
Permanent	82.75
General Fund	67.25
Federal Fund	0.50
Revolving Funds	15.00
Temporary	9.50
General Fund	9.50
Grand Total	92.25



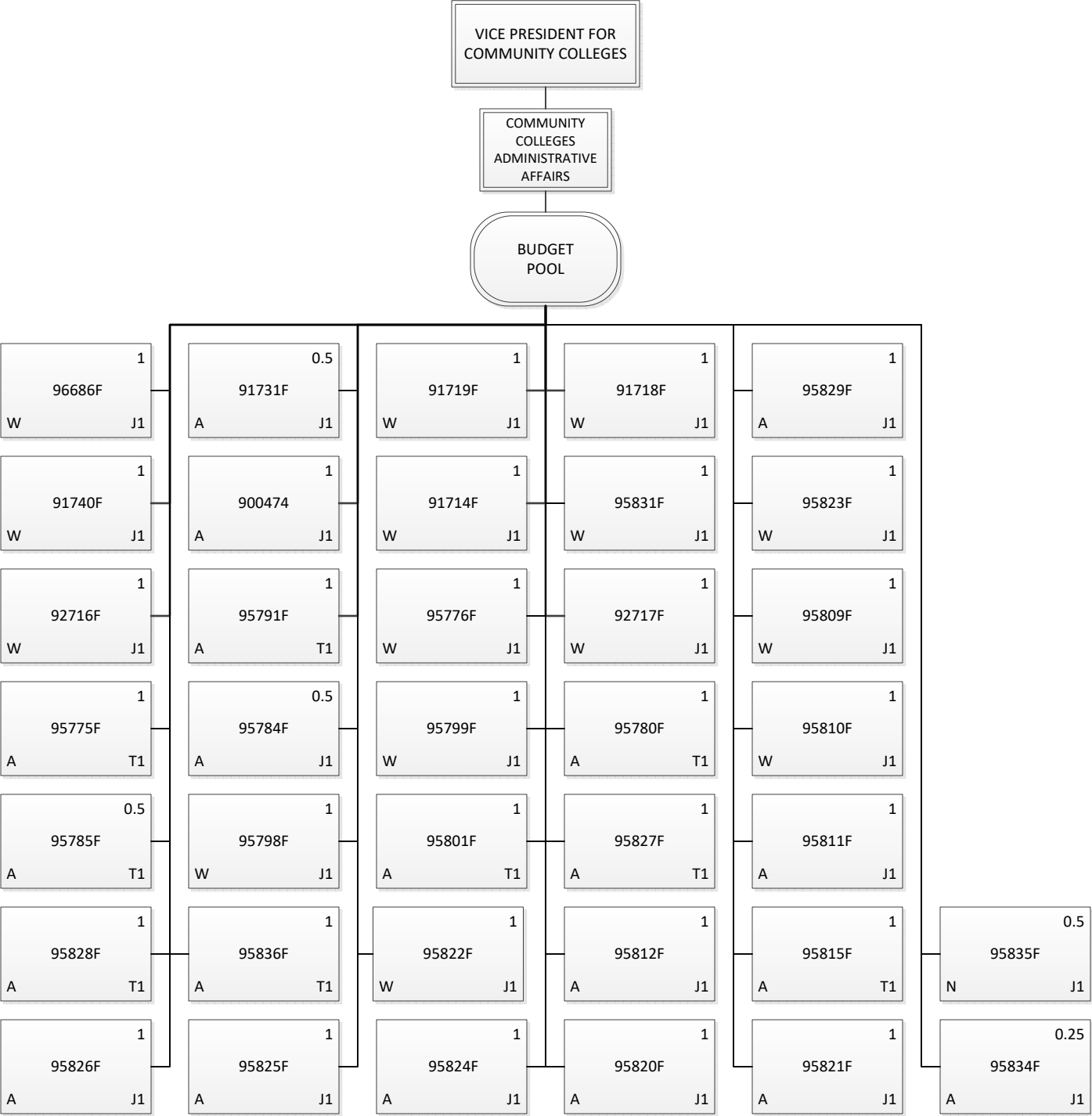
Permanent	3.00
General Fund	3.00
Grand Total	3.00



Permanent	22.00
General Fund	22.00
Temporary	1.00
General Fund	1.00
Grand Total	23.00



Permanent	32.00
General Fund	32.00
Grand Total	32.00



92716F
W
1
J1

95791F
A
1
T1

95776F
W
1
J1

92717F
W
1
J1

95809F
W
1
J1

95775F
A
1
T1

95784F
A
0.5
J1

95799F
W
1
J1

95780F
A
1
T1

95810F
W
1
J1

95785F
A
0.5
T1

95798F
W
1
J1

95801F
A
1
T1

95827F
A
1
T1

95811F
A
1
J1

95828F
A
1
T1

95836F
A
1
T1

95822F
W
1
J1

95812F
A
1
J1

95815F
A
1
T1

95835F
N
0.5
J1

95826F
A
1
J1

95825F
A
1
J1

95824F
A
1
J1

95820F
A
1
J1

95821F
A
1
J1

95834F
A
0.25
J1

Permanent	25.75
General Fund	10.25
Federal Fund	0.50
Revolving Funds	15.00
Temporary	8.50
General Fund	8.50
Grand Total	34.25