

OFFICE OF THE PRESIDENT

OFFICE OF THE PROVOST

COLLEGE OF ARTS, LANGUAGES & LETTERS
OFFICE OF THE DEAN
Org Code: MACALL

Dean, #891981.00

Program Specialist, PBB, #80485, #968972.00

Associate Dean, #890231.00

Secretary III, SR-16, #355271.00

Associate Dean, #892601.00

Secretary III, SR-16, #216431.00

IT Specialist, PBB, #793861.00

IT Specialist, PBA, #813881.00

STUDENT ACADEMIC SERVICES
Org Code:MACLAD

Director (appointed from faculty)

Secretary II, SR-14, #440551.00

Admin & Fiscal Support Specialist, PBA, #775141.00

Academic Advisor, PBB, #807191.00

Specialist Type Faculty:2.00

#70060, #83818

STATE OF HAWAI'I
UNIVERSITY OF HAWAI'I
UNIVERSITY OF HAWAI'I AT MĀNOA
OFFICE OF THE PROVOST
COLLEGE OF ARTS, LANGUAGES & LETTERS
Organization Chart
Chart I

DEPARTMENT TOTAL:	PERM	TEMP
General Funds:	380.25	19.00
Special Funds:	1.00	--

ADMINISTRATIVE SERVICES
Org Code: MAASCL

Admin Svcs Mgr, PBC, #802091.00

Admin Officer, PBB, #818711.00

HR Spec, PBB, #78313, #811102.00

HR Spec, PBA, #79811, #971972.00

HR Assistant IV, SR-11, #446091.00

Admin Svcs Mgr, PBC, #808281.00

Admin Officer, PBB, #78625, #812282.00

Admin & Fiscal Supp Spec, PBB, #777151.00

Admin Officer, Senior, PBB, #815601.00

Admin Officer, PBB, #80498, #971982.00

INSTRUCTIONAL UNITS
Org Code: MAIUCL
CHART II

ACM: The School of Cinematic Arts
Department of American Studies
Department of Art & Art History
Department of Asian Studies
Department of East Asian Languages & Literatures
Department of English
Department of History
Department of Indo-Pacific Languages & Literatures
Department of Languages & Literatures of Europe & the Americas
Department of Linguistics
Department of Music
Department of Pacific Islands Studies
Department of Philosophy
Department of Religions & Ancient Civilizations
Department of Second Language Studies
Department of Theatre & Dance

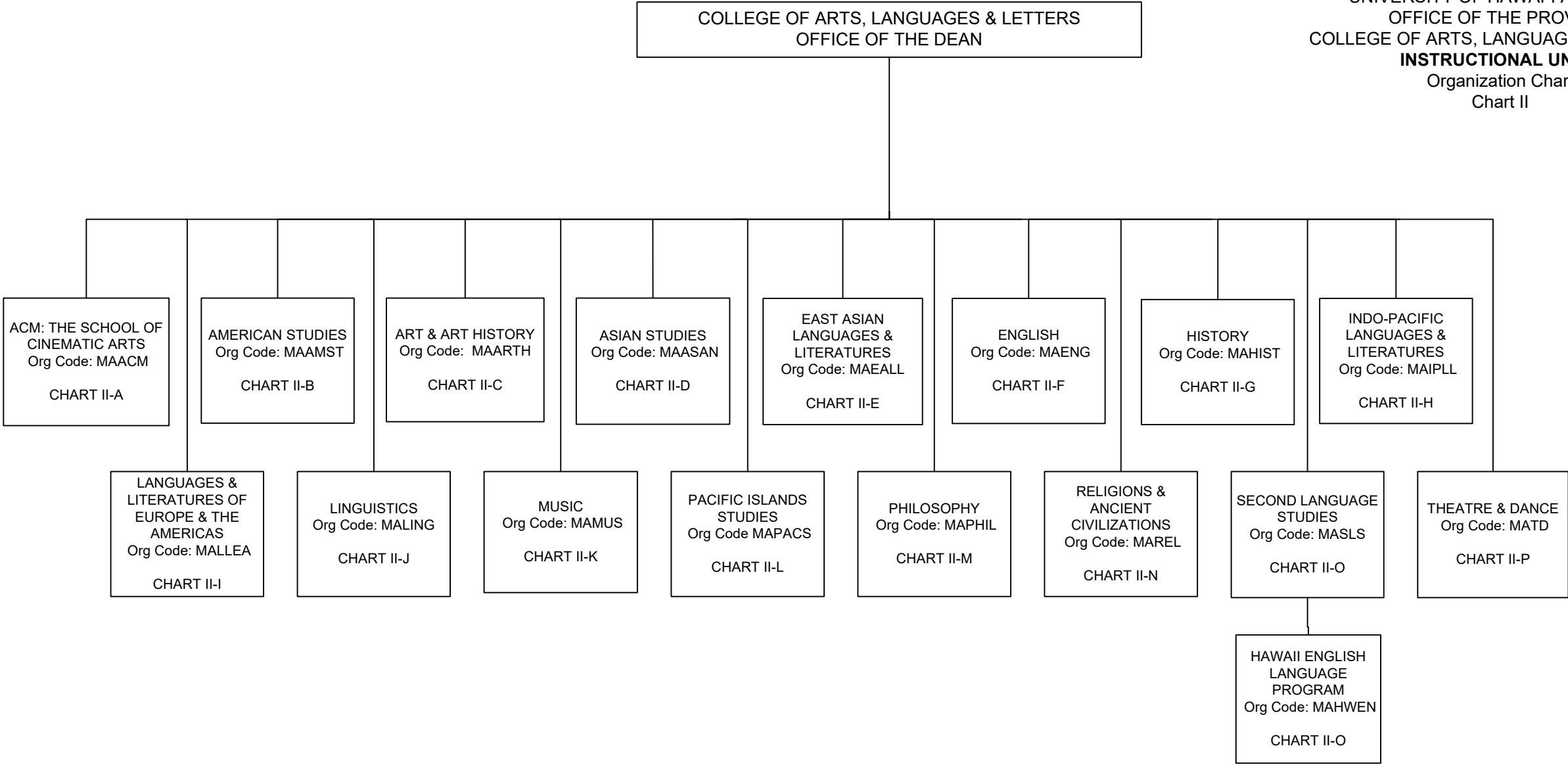
SCHOOL OF PACIFIC & ASIAN STUDIES
Org Code: MACPAS
CHART III

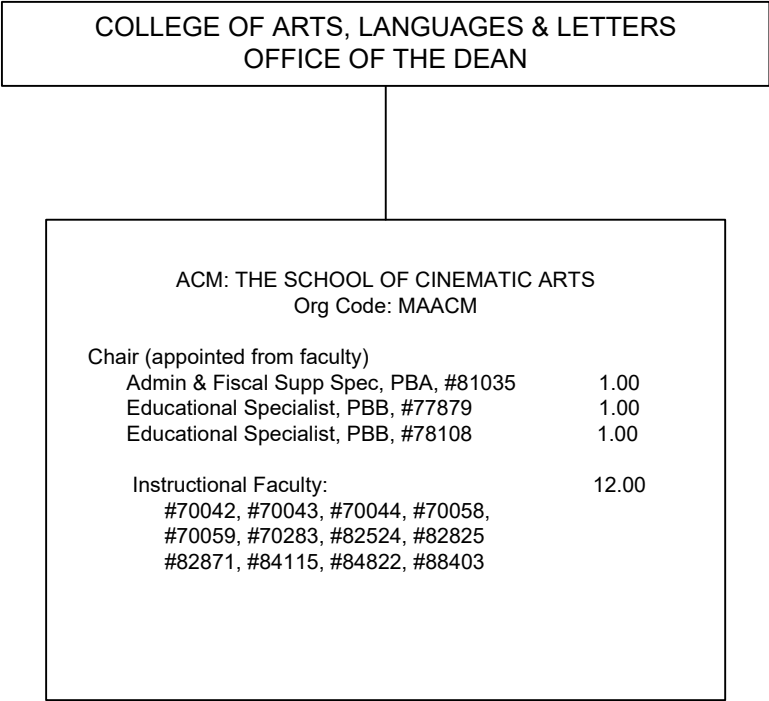
Center for Chinese Studies
Center for Japanese Studies
Center for Korean Studies
Center for Okinawan Studies
Center for Pacific Islands Studies
Center for Philippine Studies
Center for South Asian Studies
Center for Southeast Asian Studies

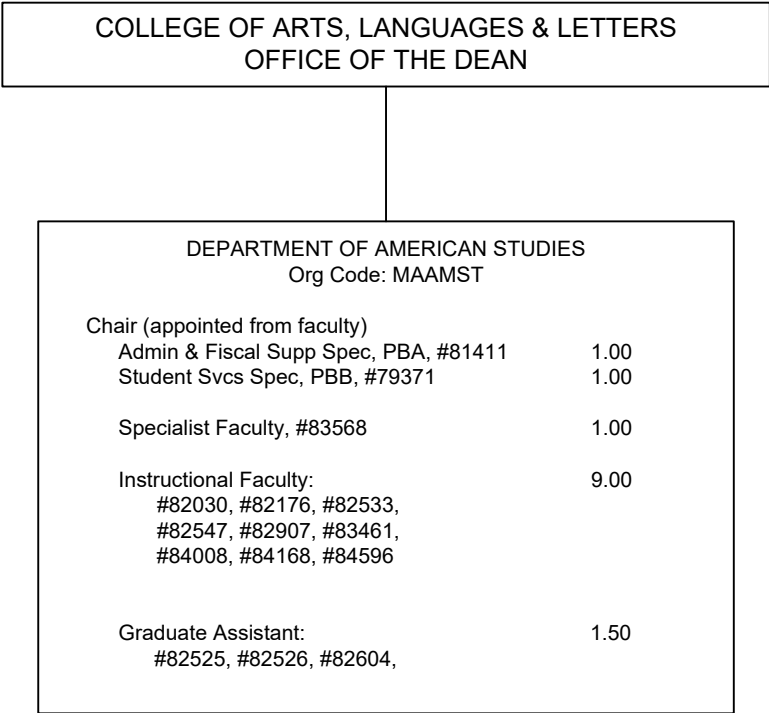
CENTERS
Org Code: MACTCL
CHART IV

Center for the Arts
Center for Biographical Research
Center for Interpretation & Translation Studies
Center for Language & Technology
Center for the Study of Human Language
Mānoa Center for the Humanities & Civic Engagement
Uehiro Academy for Philosophy and Ethics in Education

CHART TOTAL:	PERM	TEMP
General Funds:	28.00	--





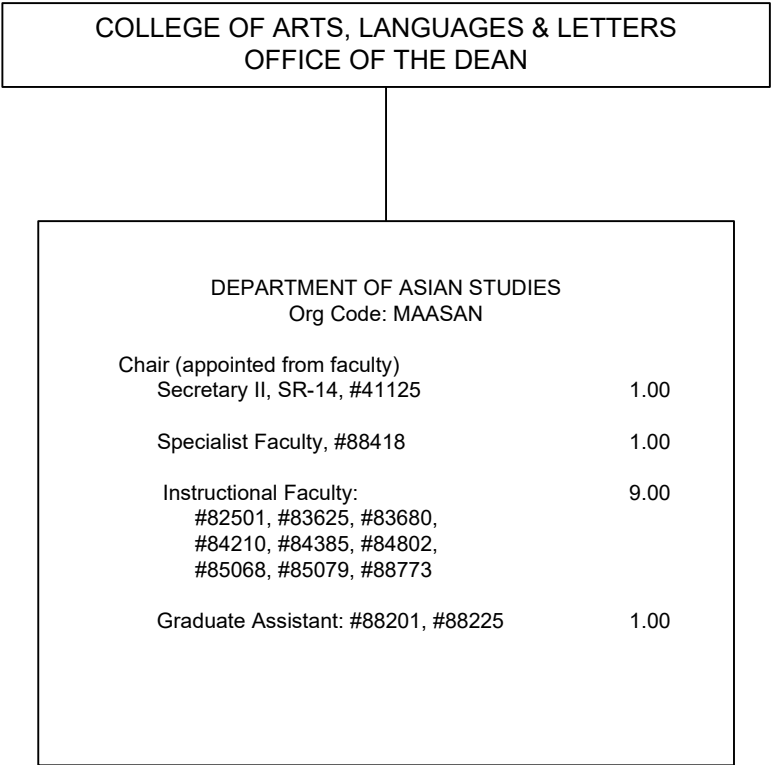


STATE OF HAWAI'I
UNIVERSITY OF HAWAI'I
UNIVERSITY OF HAWAI'I AT MĀNOA
OFFICE OF THE PROVOST
COLLEGE OF ARTS, LANGUAGES & LETTERS
DEPARTMENT OF AMERICAN STUDIES
Organization Chart
Chart II-B

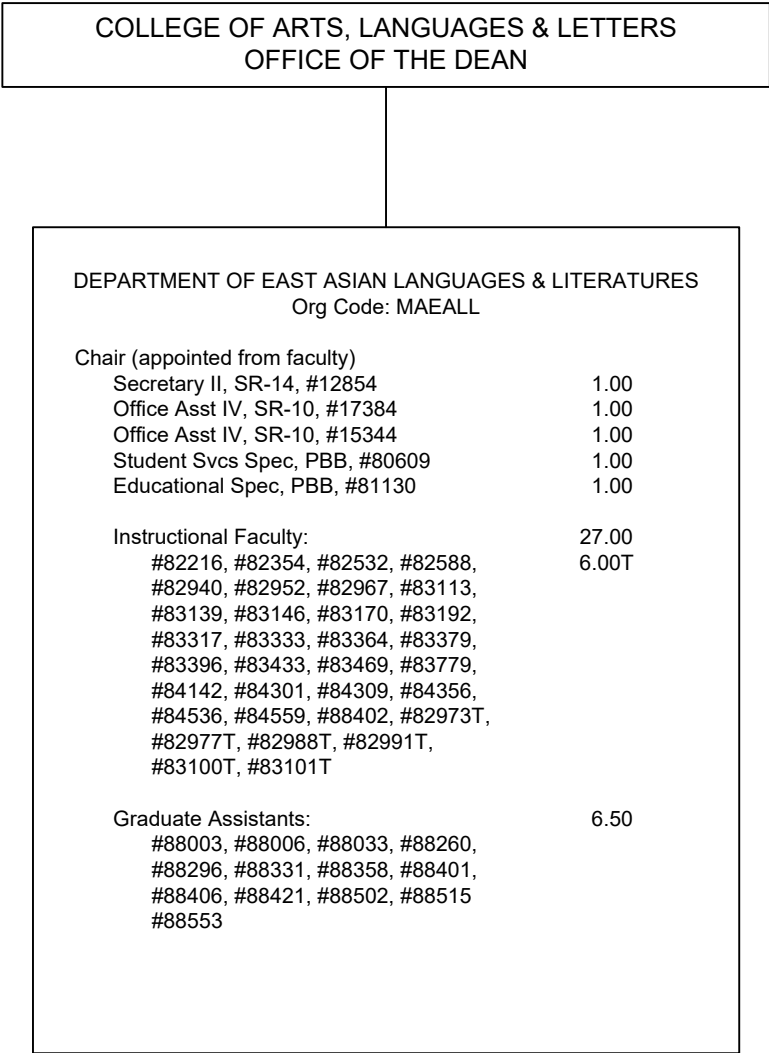
COLLEGE OF ARTS, LANGUAGES & LETTERS
OFFICE OF THE DEAN

STATE OF HAWAI'I
UNIVERSITY OF HAWAI'I
UNIVERSITY OF HAWAI'I AT MĀNOA
OFFICE OF THE PROVOST
COLLEGE OF ARTS, LANGUAGES & LETTERS
DEPARTMENT OF ART & ART HISTORY
Organization Chart
Chart II-C

DEPARTMENT OF ART & ART HISTORY Org Code: MAARTH		
Chair (appointed from faculty)		
Admin & Fiscal Supp Spec, PBA: #77525, #77920	2.00	
Educational Spec, PBB: #80499, #80667, #80726, #81319	4.00	
Machinist, PBB, #81041	1.00	
Associate Chair (appointed from faculty)		
Specialist Faculty, #83066	1.00	
Instructional Faculty: #82067, #82142, #82275, #82445, #82583, #82584, #82886, #82995, #83230, #83252, #83315, #83323, #83588, #83752, #83956, #84050, #84232, #86536	18.00	
Graduate Assistant: #82514, #82601, #88120, #88152, #88242, #88456	3.00	



STATE OF HAWAI'I
UNIVERSITY OF HAWAI'I
UNIVERSITY OF HAWAI'I AT MĀNOA
OFFICE OF THE PROVOST
COLLEGE OF ARTS, LANGUAGES & LETTERS
DEPARTMENT OF ASIAN STUDIES
Organization Chart
Chart II-D



COLLEGE OF ARTS, LANGUAGES & LETTERS
OFFICE OF THE DEAN

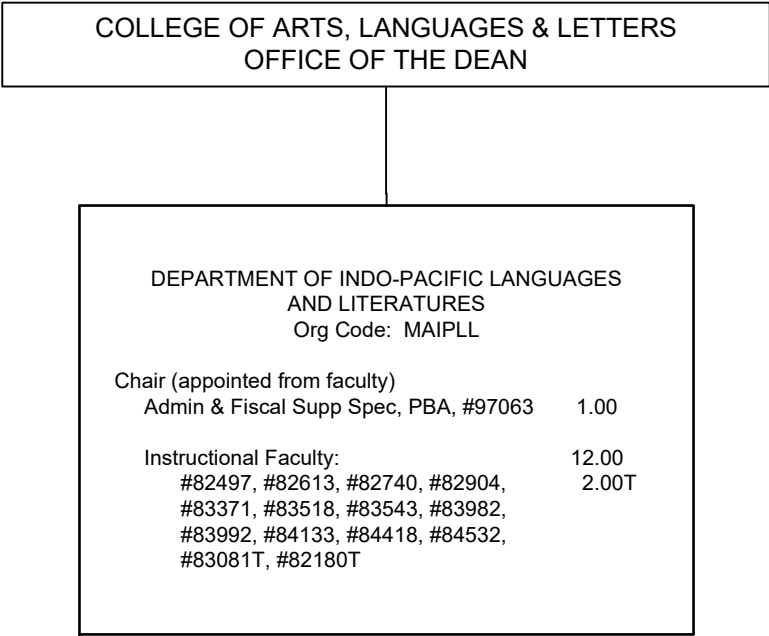
STATE OF HAWAI'I
UNIVERSITY OF HAWAI'I
UNIVERSITY OF HAWAI'I AT MĀNOA
OFFICE OF THE PROVOST
COLLEGE OF ARTS, LANGUAGES & LETTERS
DEPARTMENT OF ENGLISH
Organization Chart
Chart II-F

DEPARTMENT OF ENGLISH Org Code: MAENG		
Chair (appointed from faculty)		
Secretary II, SR-14, #11175	1.00	
Office Asst IV, SR-10, #14367	1.00	
Associate Chair (appointed from faculty)		
Educational Spec, PBB, #79171	1.00	
Instructional Faculty:		
#82046, #82055, #82098, #82104, #82560, #82673, #82841, #83089, #83193, #83234, #83266, #83272, #83296, #83480, #83489, #83561, #83572, #83595, #83751, #83760, #83918, #84397, #84520,,#84560, #84820, #88222, #88573	27.00	
Graduate Assistant:		
#83231, #83476, #83506, #83511, #88118, #88250, #88380	3.50	

COLLEGE OF ARTS, LANGUAGES & LETTERS
OFFICE OF THE DEAN

STATE OF HAWAI'I
UNIVERSITY OF HAWAI'I
UNIVERSITY OF HAWAI'I AT MĀNOA
OFFICE OF THE PROVOST
COLLEGE OF ARTS, LANGUAGES & LETTERS
DEPARTMENT OF HISTORY
Organization Chart
Chart II-G

DEPARTMENT OF HISTORY Org Code: MAHIST		
Chair (appointed from faculty)		
Admin & Fiscal Supp Spec, PBA, #81426		1.00
Student Svcs Spec, PBA, #78140		1.00
Associate Chair (appointed from faculty)		
Instructional Faculty:		24.00
#82025, #82044, #82147, #82164, #82191, #82370, #82428, #82655, #83010, #83318, #83322, #83415, #83676, #83754, #83989, #84155, #84161, #84241, #84264, #84333, #84415, #84432, #84839, #85448		
Graduate Assistant:		3.00
#88030, #88323, #88329, #88342, #88547, #88556		



STATE OF HAWAI'I
UNIVERSITY OF HAWAI'I
UNIVERSITY OF HAWAI'I AT MĀNOA
OFFICE OF THE PROVOST
COLLEGE OF ARTS, LANGUAGES & LETTERS
**DEPARTMENT INDO-PACIFIC
LANGUAGES & LITERATURES**
Organization Chart
Chart II-H

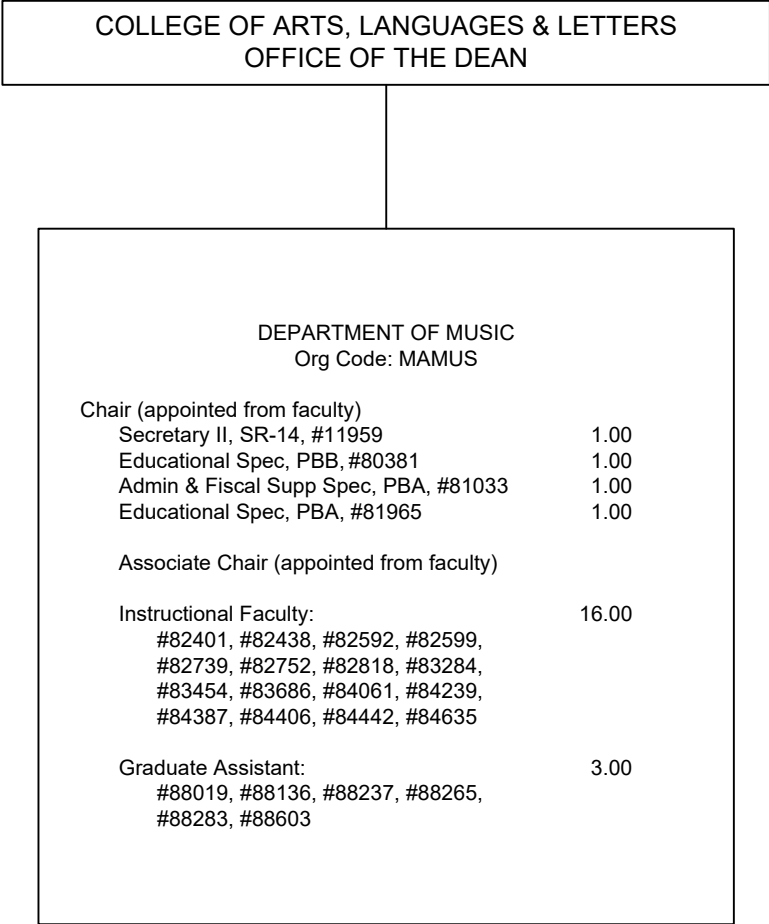
COLLEGE OF ARTS, LANGUAGES & LETTERS
OFFICE OF THE DEAN

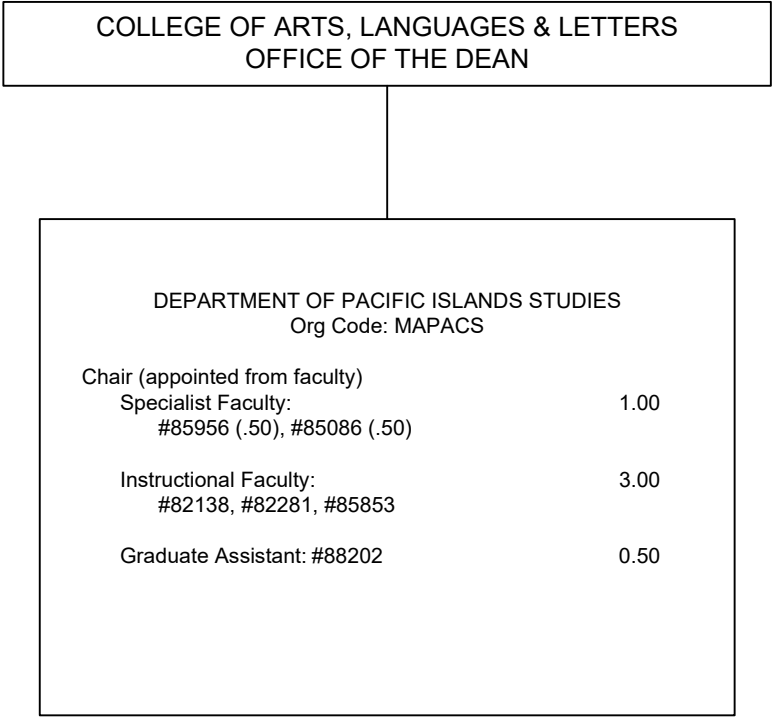
DEPARTMENT OF LANGUAGES & LITERATURES OF EUROPE & THE AMERICAS Org Code: MALLEA		
Chair (appointed from faculty)		
Secretary II, SR-14, #15346		1.00
Office Asst IV, SR-10, #22367		1.00
Educational Spec, PBB, #81199		1.00
Instructional Faculty:		20.00
#82100, #82101, #82163, #82270, #82827, #83043, #83246, #83247, #83253, #83254, #83265, #83656, #83761, #83975, #84024, #84081, #84101, #84112, #84445, #84682, #83020T, #83029T, #83039T, #83057T, #83102T, #83127T		6.00T
Graduate Assistant:		3.50
#88086, #88124, #88179, #88209, #88343, #88475, #88490		

STATE OF HAWAI'I
UNIVERSITY OF HAWAI'I
UNIVERSITY OF HAWAI'I AT MĀNOA
OFFICE OF THE PROVOST
COLLEGE OF ARTS, LANGUAGES & LETTERS
DEPARTMENT OF
LANGUAGES & LITERATURES OF EUROPE & THE AMERICAS
Organization Chart
Chart II-I

COLLEGE OF ARTS, LANGUAGES & LETTERS OFFICE OF THE DEAN		
DEPARTMENT OF LINGUISTICS Org Code: MALING		
Chair (appointed from faculty)		
Secretary II, SR-14, #13808		1.00
Admin & Fiscal Supp Spec, PBA, #81176		1.00
Instructional Faculty:		11.00
#82155, #82782, #83006, #83008,		1.00T
#83119, #83168, #84110, #84336,		
#84355, #84618, #85018, #82132T		
Graduate Assistant:		2.50
#83366, #85420, #88002, #88395,		1.00T
#88469, #83449T, #83452T		

STATE OF HAWAI'I
UNIVERSITY OF HAWAI'I
UNIVERSITY OF HAWAI'I AT MĀNOA
OFFICE OF THE PROVOST
COLLEGE OF ARTS, LANGUAGES & LETTERS
DEPARTMENT OF LINGUISTICS
Organization Chart
Chart II-J



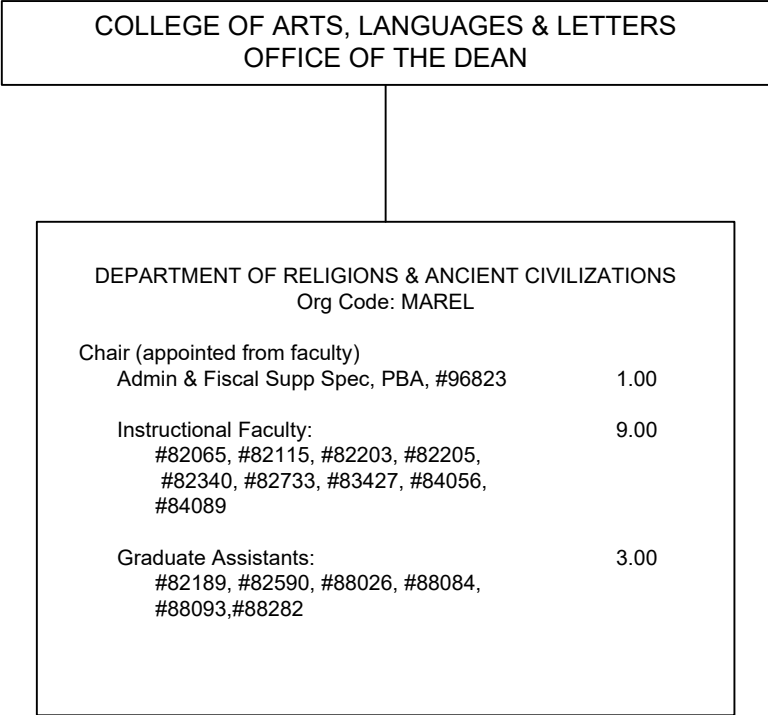


STATE OF HAWAI'I
UNIVERSITY OF HAWAI'I
UNIVERSITY OF HAWAI'I AT MĀNOA
OFFICE OF THE PROVOST
COLLEGE OF ARTS, LANGUAGES & LETTERS
DEPARTMENT OF PACIFIC ISLANDS STUDIES
Organization Chart
Chart II-L

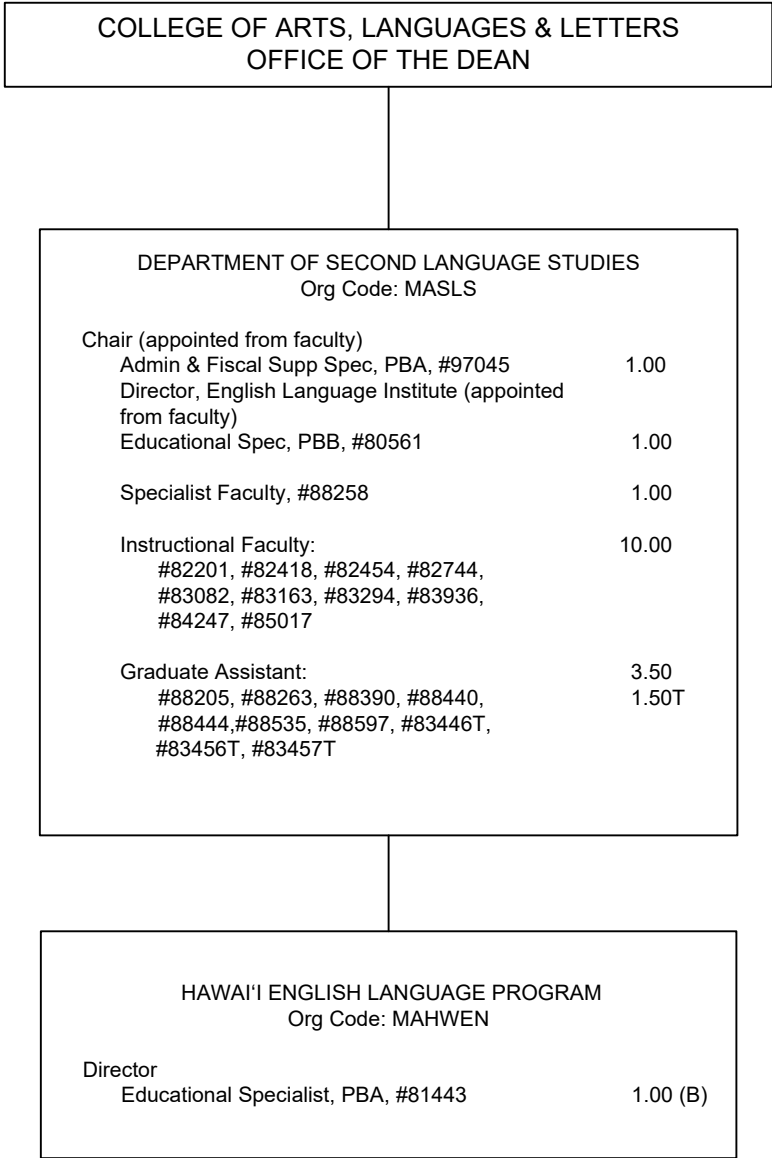
COLLEGE OF ARTS, LANGUAGES & LETTERS
OFFICE OF THE DEAN

DEPARTMENT OF PHILOSOPHY Org Code: MAPHIL		
Chair (appointed from faculty)		
Admin & Fiscal Supp Spec, PBA, #77431	1.00	
Office Asst III, SR-108, #15263	1.00	
Editor, PBA, #79339 (.75)	0.75	
Specialist Faculty, #82014, #83528	2.00	
Instructional Faculty:	11.00	
#82156, #82325, #82350, #82474, #82558, #82836, #82877, #83165, #83316, #84419, #84794		
Graduate Assistant:	2.50	
#88184, #88213, #88388, #88487, #88507		

STATE OF HAWAI'I
UNIVERSITY OF HAWAI'I
UNIVERSITY OF HAWAI'I AT MĀNOA
OFFICE OF THE PROVOST
COLLEGE OF ARTS, LANGUAGES & LETTERS
DEPARTMENT OF PHILOSOPHY
Organization Chart
Chart II-M



STATE OF HAWAI'I
UNIVERSITY OF HAWAI'I
UNIVERSITY OF HAWAI'I AT MĀNOA
OFFICE OF THE PROVOST
COLLEGE OF ARTS, LANGUAGES & LETTERS
DEPARTMENT OF RELIGION
Organization Chart
Chart II-N



STATE OF HAWAI'I
UNIVERSITY OF HAWAI'I
UNIVERSITY OF HAWAI'I AT MĀNOA
OFFICE OF THE PROVOST
COLLEGE OF ARTS, LANGUAGES & LETTERS
DEPARTMENT OF
SECOND LANGUAGE STUDIES
Organization Chart
Chart II-O

COLLEGE OF ARTS, LANGUAGES & LETTERS
OFFICE OF THE DEAN

STATE OF HAWAI'I
UNIVERSITY OF HAWAI'I
UNIVERSITY OF HAWAI'I AT MĀNOA
OFFICE OF THE PROVOST
COLLEGE OF ARTS, LANGUAGES & LETTERS
DEPARTMENT OF THEATRE & DANCE
Organization Chart
Chart II-P

DEPARTMENT OF THEATRE & DANCE Org Code: MATD		
Chair (appointed from faculty)		
Secretary II, SR-14, #13647		1.00
Admin & Fiscal Supp Spec, PBA, #77076		1.00
Theater/Stage Manager, PBB, #80119		1.00
Theater Technician, PBB:		3.00
#78466, #80700, #81269		
Operation Coordinator, PBA, #80994		1.00
Director of Theatre (Associate Chair) (appointed from faculty)		
Director of Dance Program (Associate Chair) (appointed from faculty)		
Instructional Faculty:		13.00
#82110, #82161, #82234, #82260, #82640, #83250, #83337, #83436, #83439, #83591, #84434, #84574, #85088		
Graduate Assistant:		6.00
#82419, #82549, #82568, #88000, #88051, #88052, #88053, #88127, #88207, #88211, #88246, #88324, #82117T, #82123T		1.00T

