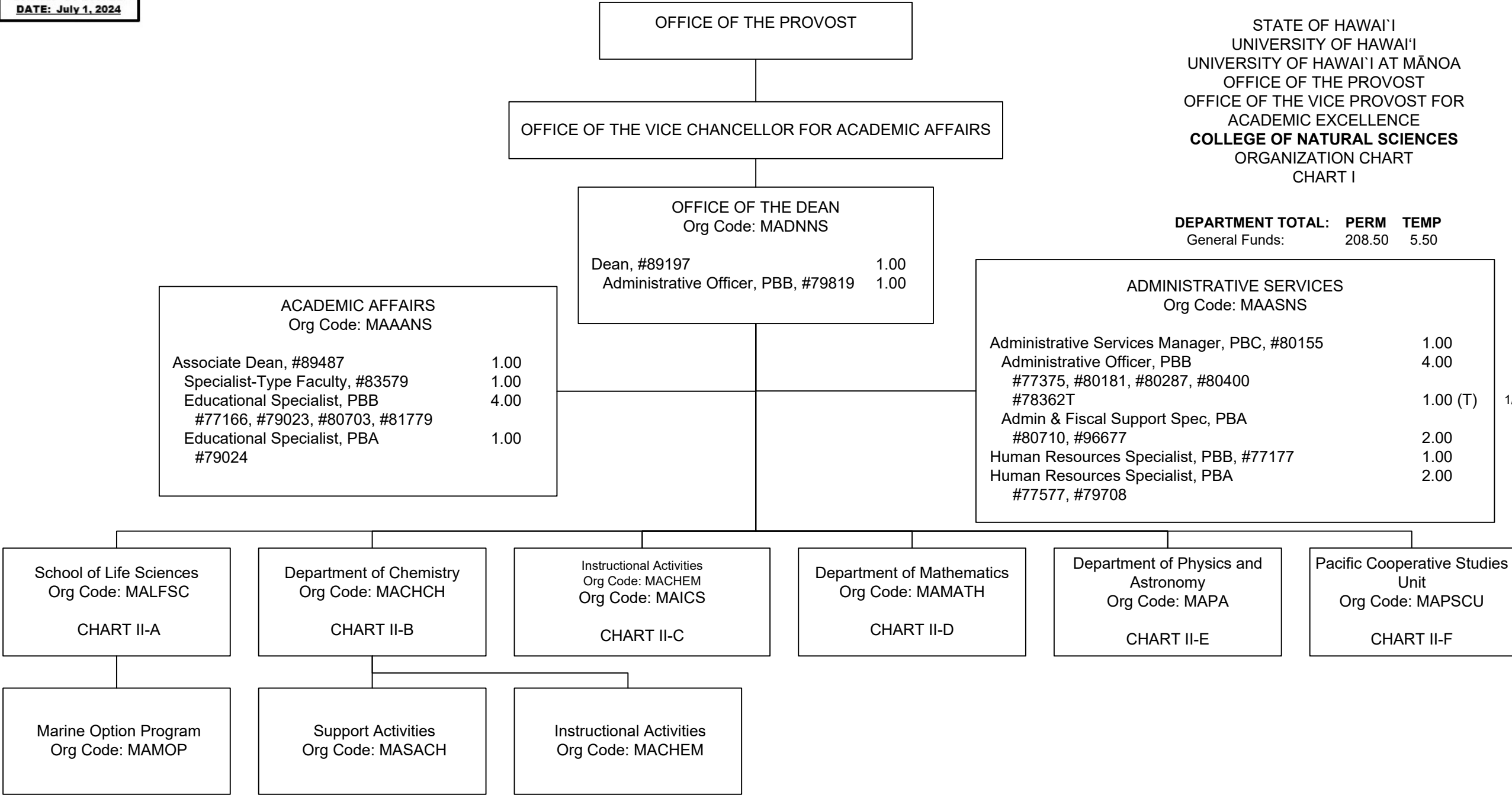
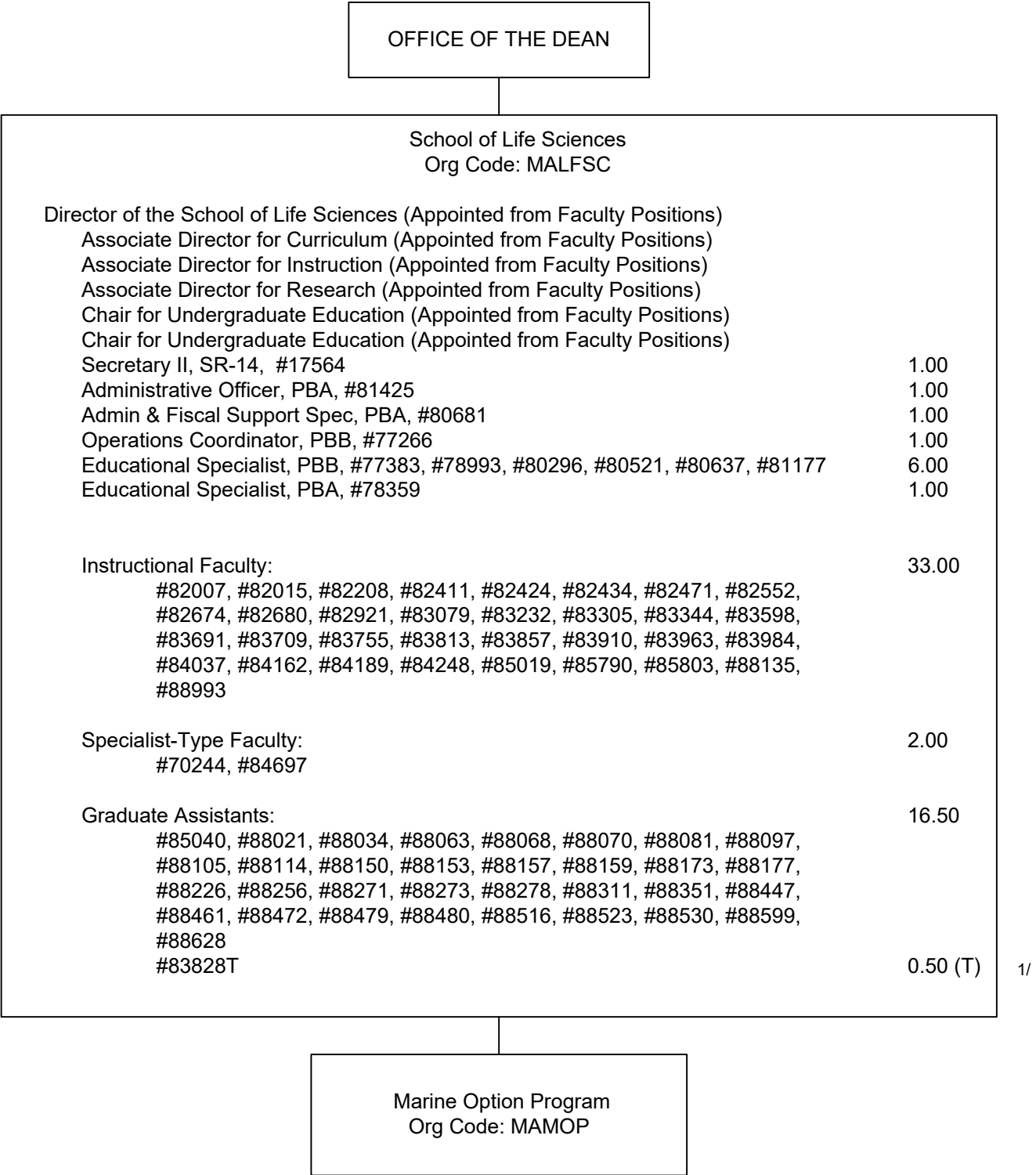


DEPARTMENT TOTAL:   **PERM**   **TEMP**  
General Funds:           208.50   5.50



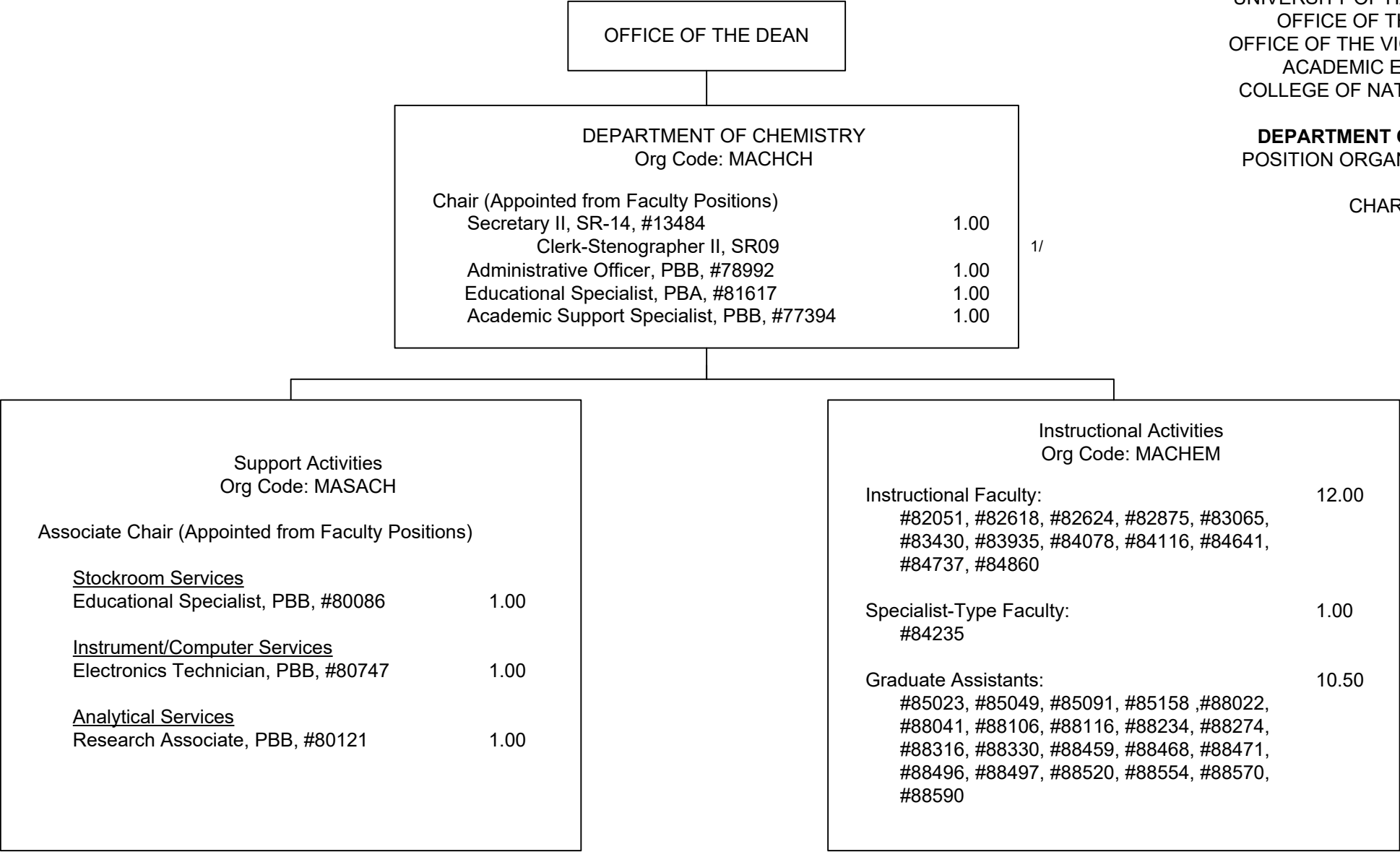
1/ Admin & Fiscal Support Specialist, #78362T in Administrative Services is an appropriated temporary position

CHART TOTAL:           **PERM**   **TEMP**  
General Funds:           19.00   1.00

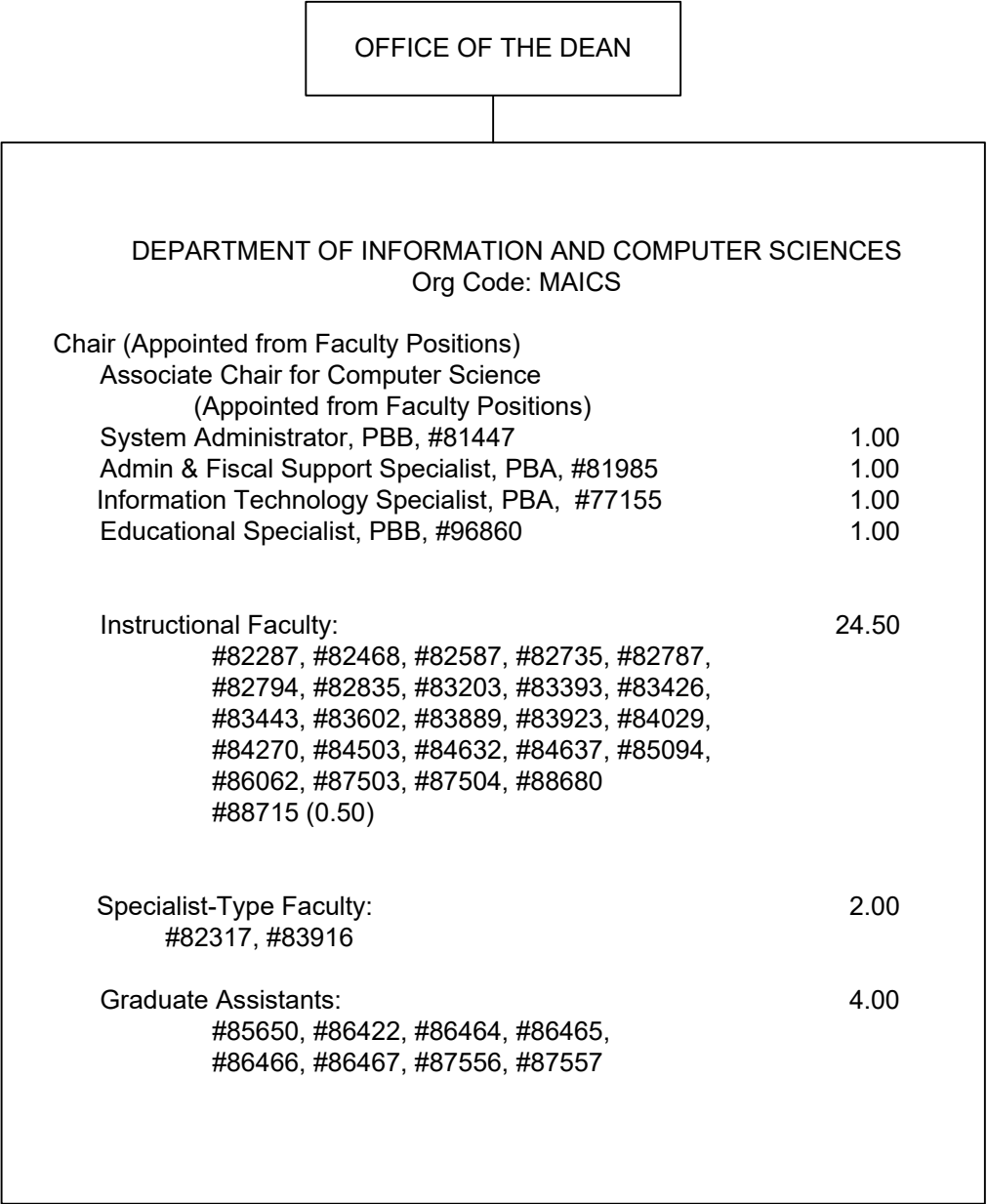


DEPARTMENT OF CHEMISTRY  
POSITION ORGANIZATION CHART

CHART II-B



1/ Clerk Steno II in Department of Chemistry abolished, pending re-establishment.



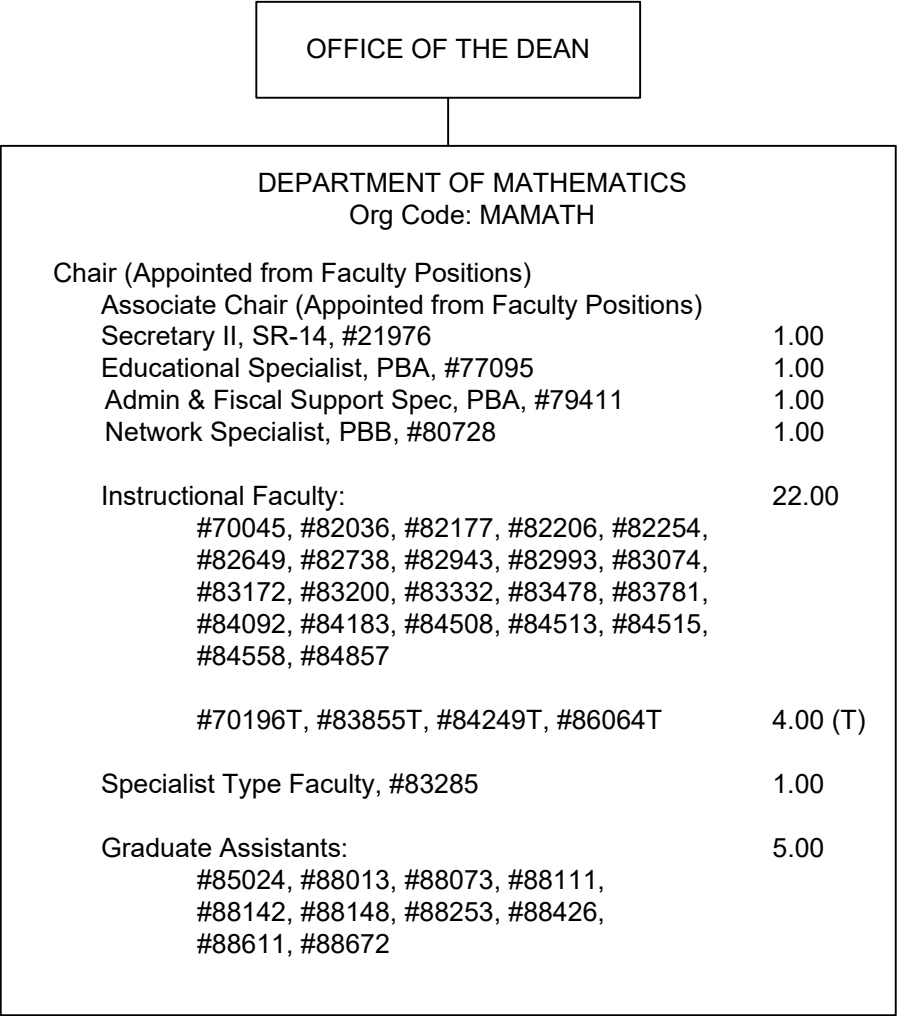
STATE OF HAWAI'I  
UNIVERSITY OF HAWAI'I  
UNIVERSITY OF HAWAI'I AT MĀNOA  
OFFICE OF THE PROVOST  
OFFICE OF THE VICE PROVOST FOR  
ACADEMIC EXCELLENCE  
COLLEGE OF NATURAL SCIENCES

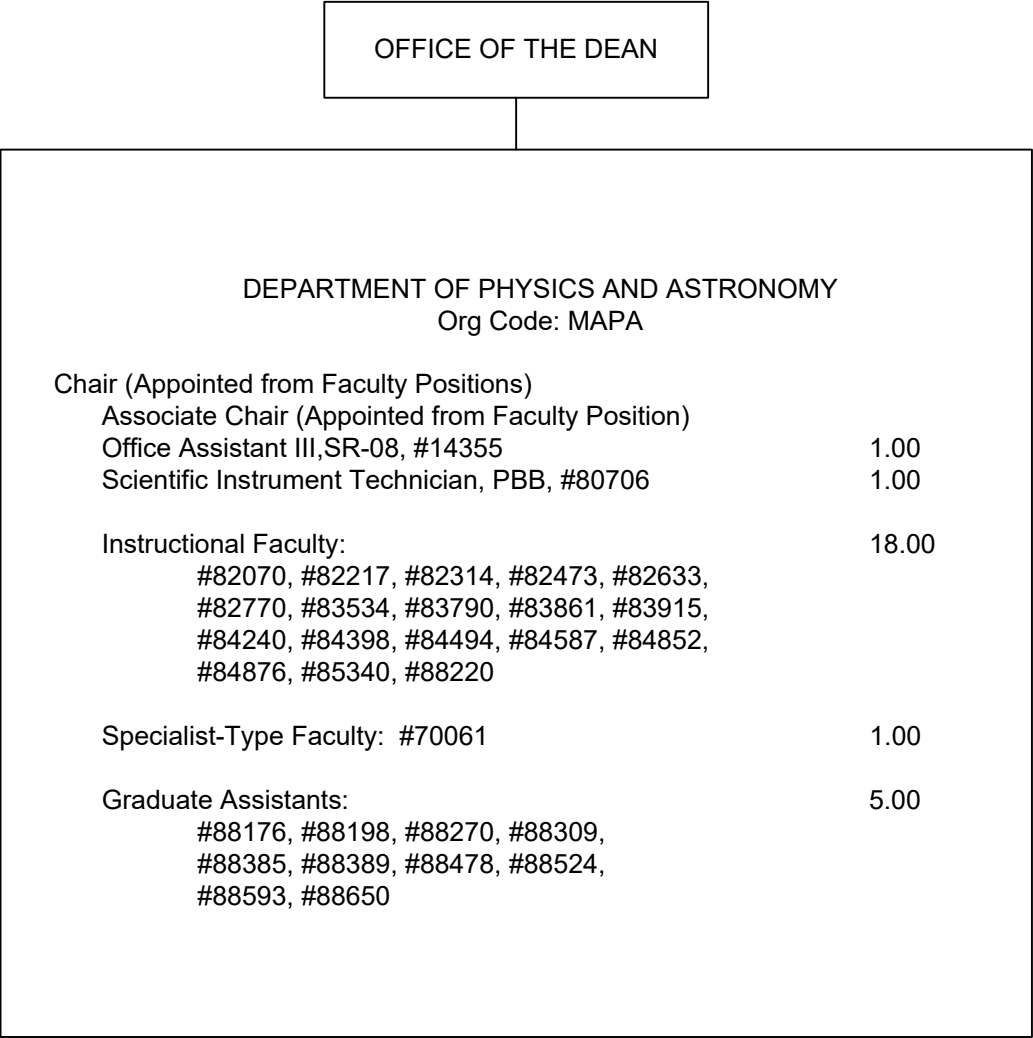
DEPARTMENT OF INFORMATION  
AND COMPUTER SCIENCES  
POSITION ORGANIZATION CHART

CHART II-C

DEPARTMENT OF MATHEMATICS  
POSITION ORGANIZATION CHART

CHART II-D





STATE OF HAWAI'I  
UNIVERSITY OF HAWAI'I  
UNIVERSITY OF HAWAI'I AT MĀNOA  
OFFICE OF THE PROVOST  
OFFICE OF THE VICE PROVOST FOR  
ACADEMIC EXCELLENCE  
COLLEGE OF NATURAL SCIENCES

DEPARTMENT OF PHYSICS AND ASTRONOMY  
POSITION ORGANIZATION CHART

CHART II-E



STATE OF HAWAI'I  
UNIVERSITY OF HAWAI'I  
UNIVERSITY OF HAWAI'I AT MĀNOA  
OFFICE OF THE PROVOST  
OFFICE OF THE VICE PROVOST FOR  
ACADEMIC EXCELLENCE  
COLLEGE OF NATURAL SCIENCES

PACIFIC COOPERATIVE STUDIES UNIT  
POSITION ORGANIZATION CHART

CHART II-F