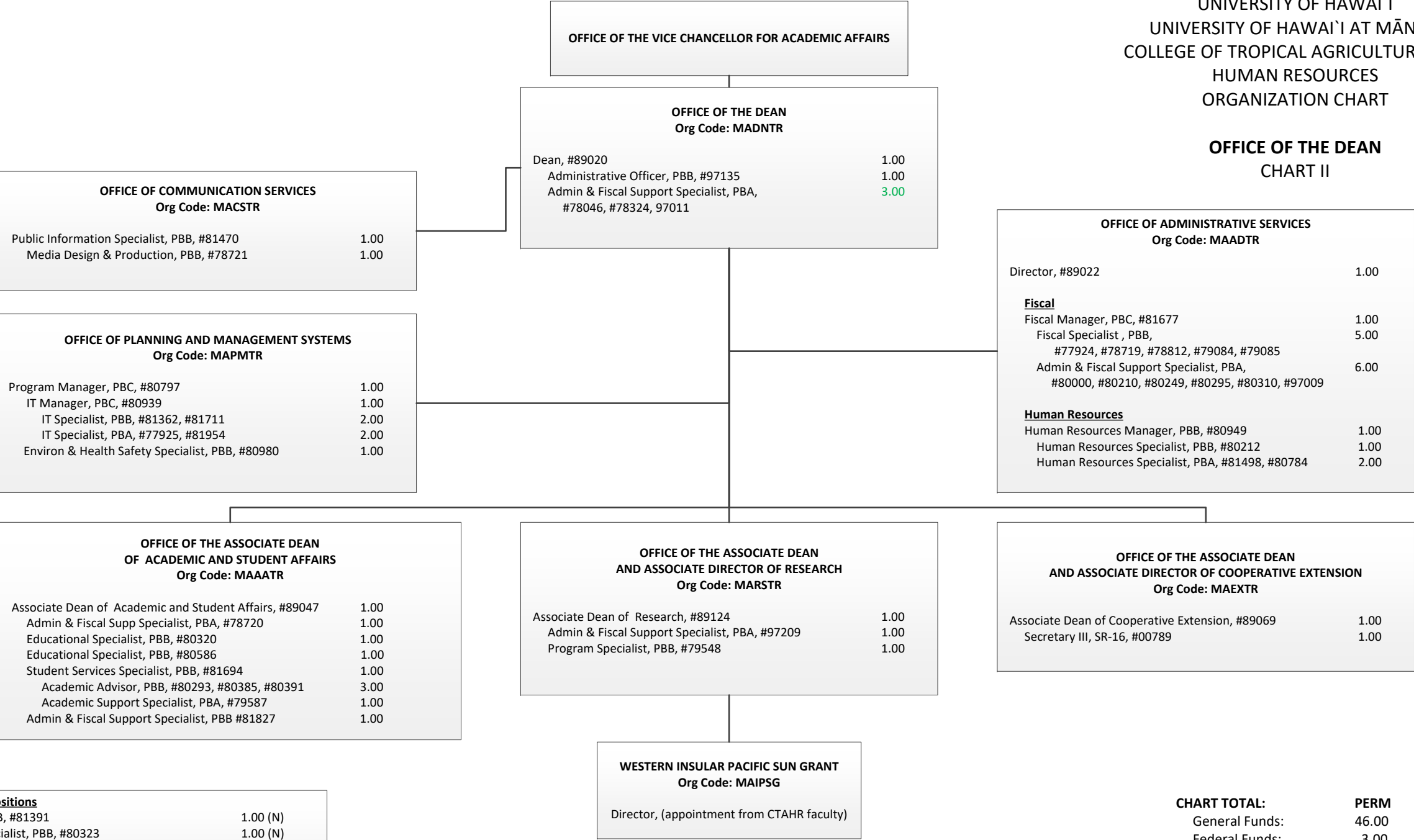
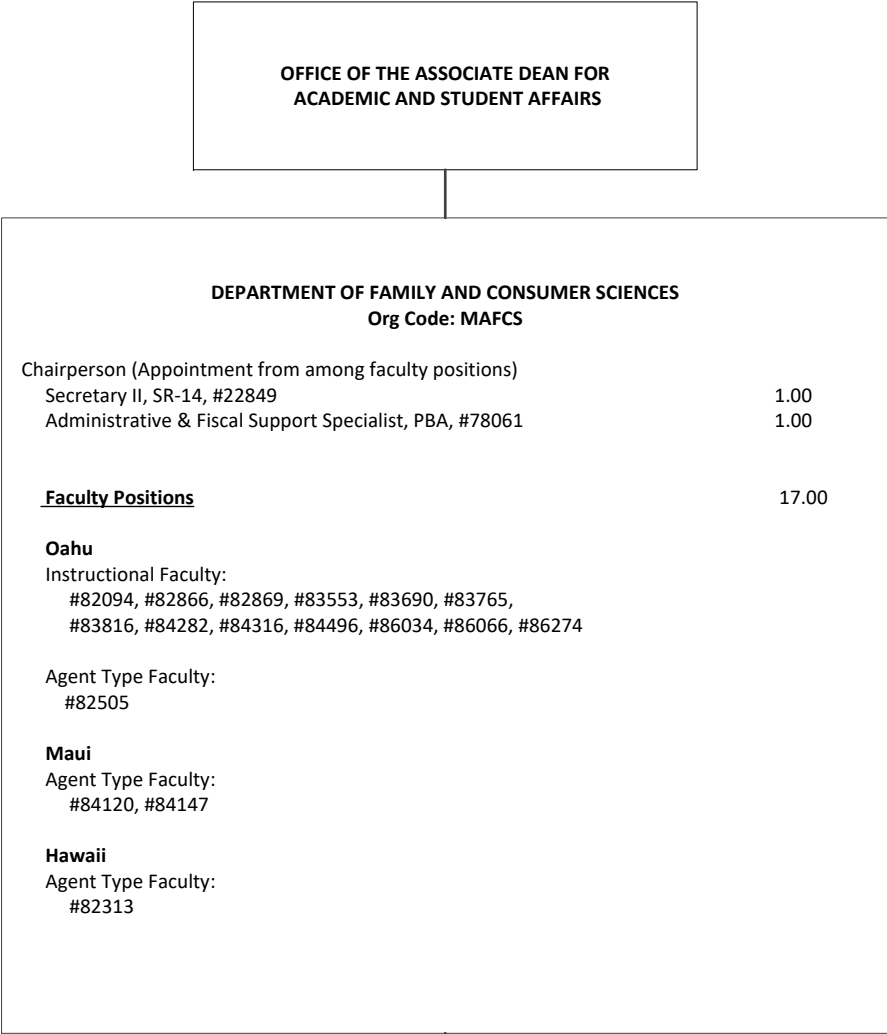


STATE OF HAWAIʻI
UNIVERSITY OF HAWAIʻI
UNIVERSITY OF HAWAIʻI AT MĀNOA
COLLEGE OF TROPICAL AGRICULTURE AND
HUMAN RESOURCES
ORGANIZATION CHART

OFFICE OF THE DEAN
CHART II



DEPARTMENT OF FAMILY AND CONSUMER SCIENCES
CHART III



Federal Positions		
Graduate Assistants		
#88134, #88219, #88410, #88565, #88576	2.50	(N)
Faculty		
#82074, 83525, #83968, #84145, #84685, #85421	6.00	(N)
*Abolished positions: #84610, #84662, #85476	3.00	(N)

4-H OFFICE		
Org Code: MA4H		
Specialist Type Faculty: #84665	1.00	

CENTER ON THE FAMILY		
Org Code: MACOF		
Faculty Position	6.00	
Specialist, #85550		
Specialist Type Faculty: #82181, #82238, #84325, #84477		
Research Type Faculty: #84585		
Secretary II, SR-14, #46186	1.00	

CHART TOTAL:	PERM	TEMP
General Funds:	27.00	--
Federal Funds:	11.50	

STATE OF HAWAI`I
UNIVERSITY OF HAWAI`I
UNIVERSITY OF HAWAI`I AT MĀNOA
COLLEGE OF TROPICAL AGRICULTURE AND
HUMAN RESOURCES
ORGANIZATION CHART

DEPARTMENT OF HUMAN NUTRITION, FOOD AND
ANIMAL SCIENCES
CHART IV

OFFICE OF THE ASSOCIATE DEAN FOR
ACADEMIC AND STUDENT AFFAIRS

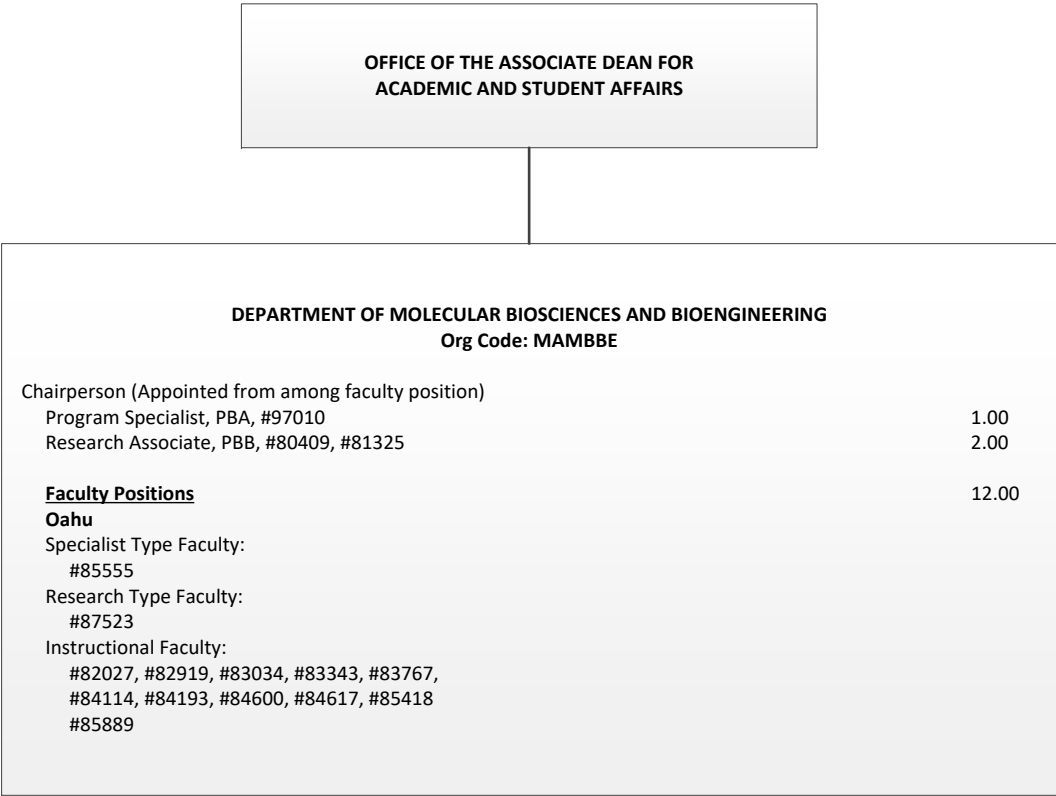
DEPARTMENT OF HUMAN NUTRITION, FOOD AND ANIMAL SCIENCES		
Org Code: MAHFAS		
Chairperson (Appointed from among faculty position)		
Secretary II, SR-14, #00400		1.00
Office Assistant III, SR-08, #900569		1.00
Administrative & Fiscal Support Specialist, PBA, #80386		1.00
Research Associate, PBB, #80410		1.00
Research Associate, PBA, #77092		1.00
Faculty Positions		25.00
Oahu		
Agent Type Faculty:		
#85408		
Specialist Type Faculty:		
#82107, #84640, #85495		
Research Type Faculty:		
#83633, #85576		
Instructional Faculty:		
#82175, #82248, #83012, #83267, #83811, #84306, #84323		
#84449, #84454, #84472, #84512, #84919, #84920, #85556, #87552		
Maui		
Agent Type Faculty:		
#82639, #84918		
Hawaii		
Specialist Type Faculty:		
#82090		
Agent Type Faculty:		
#83152		

Federal Positions	
Graduate Assistants	
#86249, #88088, #88165, #88303, #88594, #88643	3.00 (N)
Faculty	
#82363, #82865, #83017, #83728, #84158, #84276, #84297, #84439	8.00 (N)
* Abolished positions: #84163	1.00 (N)

CHART TOTAL:	PERM	TEMP
General Funds:	30.00	
Federal Funds:	12.00	

STATE OF HAWAI`I
UNIVERSITY OF HAWAI`I
UNIVERSITY OF HAWAI`I AT MĀNOA
COLLEGE OF TROPICAL AGRICULTURE AND
HUMAN RESOURCES
ORGANIZATION CHART

DEPARTMENT OF MOLECULAR BIOSCIENCES AND
BIOENGINEERING
CHART V

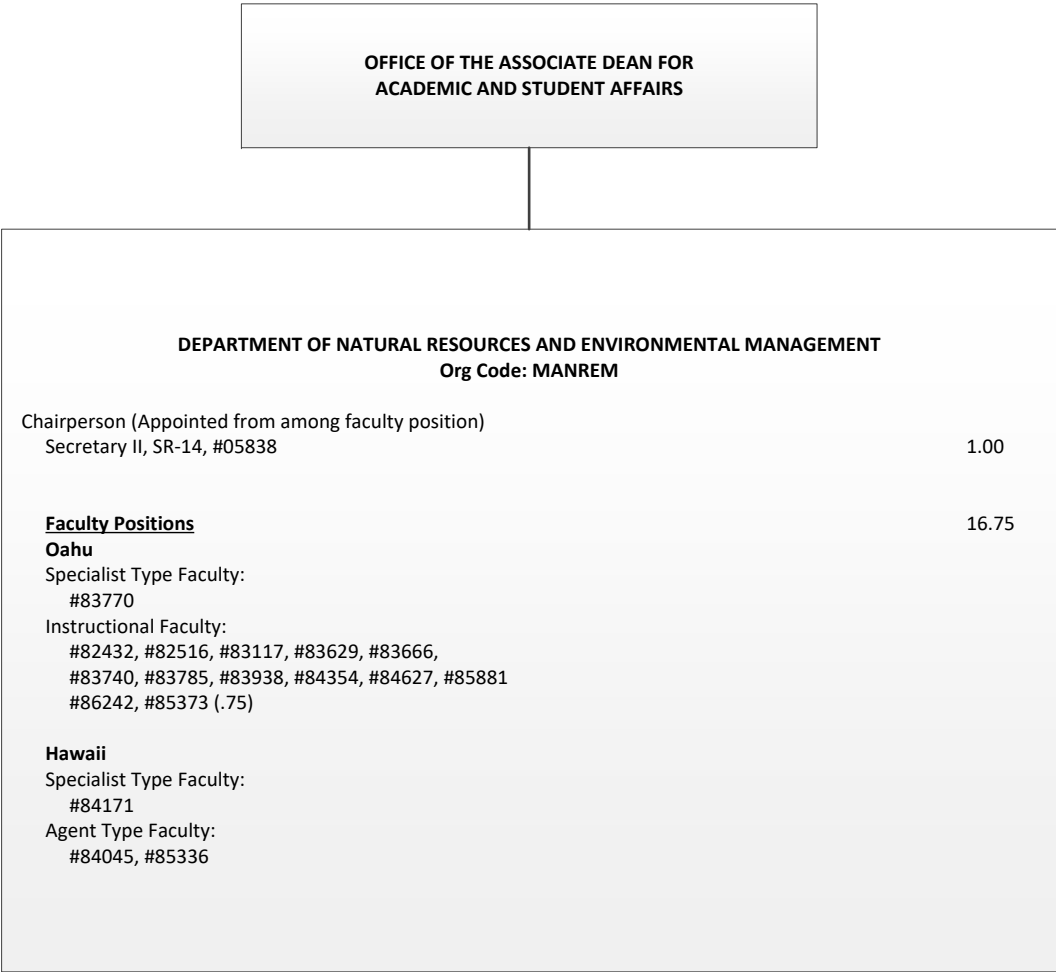


Federal Positions		
Graduate Assistants		
#88486, #88494, #88509, #88630	2.00	(N)
Faculty		
#82224, #82848, #85151	3.00	(N)

CHART TOTAL:	PERM	TEMP
General Funds:	16.00	--
Federal Funds:	5.00	

STATE OF HAWAI`I
UNIVERSITY OF HAWAI`I
UNIVERSITY OF HAWAI`I AT MĀNOA
COLLEGE OF TROPICAL AGRICULTURE AND
HUMAN RESOURCES
ORGANIZATION CHART

DEPARTMENT OF NATURAL RESOURCES AND
ENVIRONMENTAL MANAGEMENT
CHART VI



Federal Positions		
Graduate Assistants		
#86220, #88028, #88181, #88431	2.00 (N)	
Faculty		
#82058, #83459, #83824, #83848, #84488, #84668	6.00 (N)	

CHART TOTAL:	PERM	TEMP
General Funds:	17.75	
Federal Funds:	8.00	

OFFICE OF THE ASSOCIATE DEAN FOR
ACADEMIC AND STUDENT AFFAIRS

STATE OF HAWAI`I
UNIVERSITY OF HAWAI`I
UNIVERSITY OF HAWAI`I AT MĀNOA
COLLEGE OF TROPICAL AGRICULTURE AND
HUMAN RESOURCES
ORGANIZATION CHART

DEPARTMENT OF PLANT AND ENVIRONMENTAL
PROTECTION SCIENCES
CHART VII

DEPARTMENT OF PLANT AND ENVIRONMENTAL PROTECTION SCIENCES		
Org Code: MAPEPS		
Chairperson (Appointed from among faculty position)		
Secretary II, SR-14, #07477		1.00
Administrative & Fiscal Support Specialist, PBA, #77864		1.00
Research Associate, PBB, #80388, #81311		2.00
Research Associate, PBA, #81313		1.00
Agr Research Technician IV, SR-14, #24270		1.00
Faculty Positions		17.00
Oahu		
Specialist Type Faculty:		
#83320, #84321, #84911, #85414		
Research Type Faculty:		
#82047, #82139, #83067, #83184, #83742, #84041		
Instructional Faculty:		
#82976, #83882, #84138, #85510		
Agent Type Faculty:		
#70284		
Kauai		
Agent Type Faculty:		
#85410		
Hawaii		
Specialist Type Faculty:		
#84427		

Federal Positions		
Graduate Assistants		
#84932, #88241,		1.00 (N)
Faculty		
#82196, #83462, #84006, #84489, #85505, #85530, #85538, #85547		8.00 (N)
Research Associate		
#81178		1.00 (N)
Agr Research Tech III, SR-11, #24269		1.00 (N)
*Abolished positions: #82722, #85526, #85551 (.56),		2.56 (N)

CHART TOTAL:	PERM	TEMP
General Funds:	23.00	--
Federal Funds:	13.56	

OFFICE OF THE ASSOCIATE DEAN FOR
ACADEMIC AND STUDENT AFFAIRS

STATE OF HAWAI`I
UNIVERSITY OF HAWAI`I
UNIVERSITY OF HAWAI`I AT MĀNOA
COLLEGE OF TROPICAL AGRICULTURE AND
HUMAN RESOURCES
ORGANIZATION CHART

DEPARTMENT OF TROPICAL PLANT AND SOIL SCIENCES Org Code: MATPSS		
Chairperson (Appointed from among faculty position)		
Secretary II, SR-14, #00793		1.00
Administrative & Fiscal Support Specialist, PBA, #77795		1.00
Agr Research Technician V, SR-16, #11019		1.00
Agr Research Technician IV, SR-14 *		
Educational Specialist, PBA, #81739		1.00
Faculty Positions		32.00
Oahu		
Specialist Type Faculty:		
#82212, #82598, #83159, #83304, #83388		
Research Type Faculty:		
#82023, #82464, #82699, #83260, #83515, #84420,		
#84481, #85877, #86275		
Instructional Type Faculty:		
#83286, #84046, #84416		
Agent Type Faculty:		
#84070, #85435, #85460, #85528		
Maui		
Agent Type Faculty:		
#85392, #85404, #85423, #85459, #85477,		
#85531		
Hawaii		
Agent Type Faculty:		
#82485, #82951, #84648		
Kauai		
Agent Type Faculty:		
#85371, #85387		

DEPARTMENT OF TROPICAL PLANT AND SOIL SCIENCES
CHART VIII

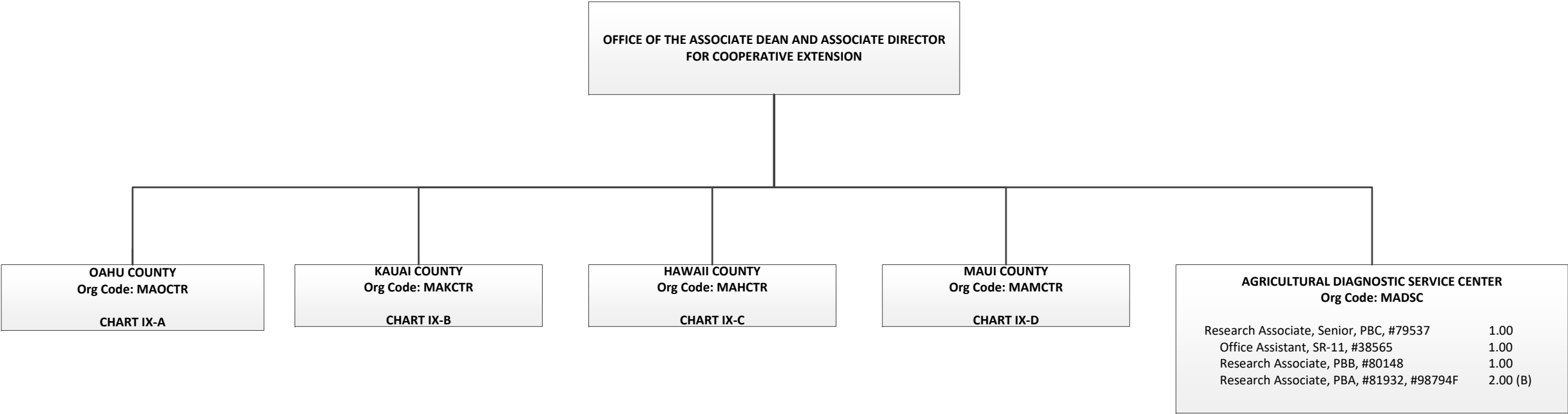
Federal Positions		
Graduate Assistants		
#88171, #88423		1.00 (N)
Faculty		
#82747, #82881, #82985, #84075,		8.00 (N)
#84501, #84916, #85440, #87584		
Agr Research Tech IV, SR-14, #15512		1.00 (N)
Office Assistant IV, SR-10, #399		1.00 (N)
Research Support, PBB, #80270		1.00 (N)
*Abolished positions: #82687, #82704, #82758,		5.00 (N)
#83054,-#85778		

CHART TOTAL:	PERM	TEMP
General Funds:	36.00	--
Federal Funds:	17.00	

* To be established

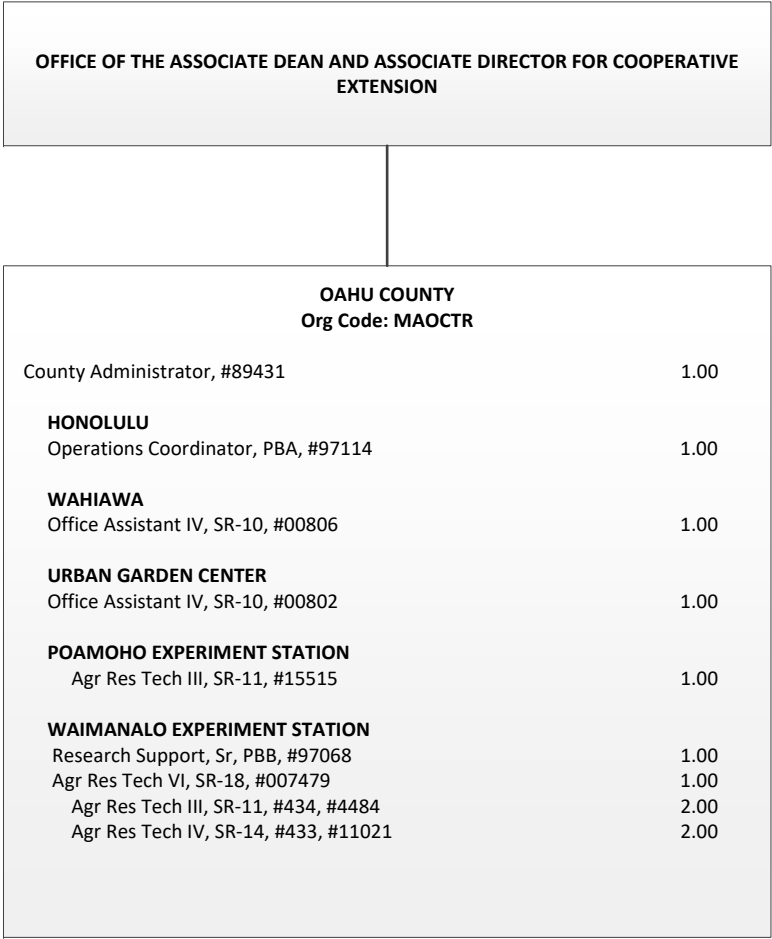
STATE OF HAWAI`I
UNIVERSITY OF HAWAI`I
UNIVERSITY OF HAWAI`I AT MĀNOA
COLLEGE OF TROPICAL AGRICULTURE AND
HUMAN RESOURCES
ORGANIZATION CHART

COUNTY ADMINISTRATION
CHART IX



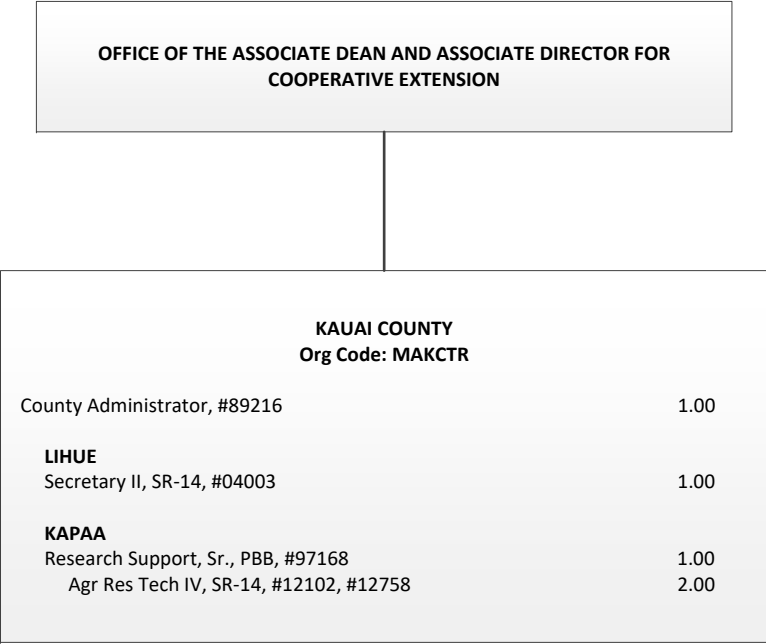
STATE OF HAWAI`I
UNIVERSITY OF HAWAI`I
UNIVERSITY OF HAWAI`I AT MĀNOA
COLLEGE OF TROPICAL AGRICULTURE AND
HUMAN RESOURCES
ORGANIZATION CHART

OAHU COUNTY
CHART IX-A



STATE OF HAWAI`I
UNIVERSITY OF HAWAI`I
UNIVERSITY OF HAWAI`I AT MĀNOA
COLLEGE OF TROPICAL AGRICULTURE AND
HUMAN RESOURCES
ORGANIZATION CHART

KAUAI COUNTY
CHART IX-B



Federal Positions		
Agr Res Tech III, SR-11, #12761	1.00	(N)

CHART TOTAL:	PERM	TEMP
General Funds:	5.00	--
Federal Funds:	1.00	

OFFICE OF THE ASSOCIATE DEAN AND ASSOCIATE DIRECTOR FOR COOPERATIVE EXTENSION		
HAWAII COUNTY Org Code: MAHCTR		
County Administrator, #89213		1.00
Operations Coordinator, PBB		
KOMOHANA		
Secretary II, SR-14, #13871		1.00
Office Assistant III, SR-08, #00791		1.00
KONA		
Office Assistant IV, SR-10, #900583		1.00
KAMUELA		
Office Assistant IV, SR-10, #00799		1.00
EAST HAWAII		
Research Support, Sr., PBB, #97115		1.00
WAIAKEA		
Agr Res Tech V, SR-16, #14166		1.00
Agr Res Tech III, SR-11, #15497		1.00
VOLCANO		
Agr Res Tech V, SR-16, #13206		1.00
MALAMA-KI		
WEST HAWAII		
Agr Res Tech VI, SR-18, #13530		1.00
MEALANI		
Agr Res Tech V, SR-16, #12094		1.00
Agr Res Tech IV, SR-14, #12100		1.00
Agr Res Tech III, SR-11, #397, #44867, #44868		3.00
HAMAKUA		
KONA		
Agr Res Tech V, SR-16, #00409		1.00
Agr Res Tech III, SR-11, #22912		1.00

STATE OF HAWAI`I
UNIVERSITY OF HAWAI`I
UNIVERSITY OF HAWAI`I AT MĀNOA
COLLEGE OF TROPICAL AGRICULTURE AND
HUMAN RESOURCES
ORGANIZATION CHART

HAWAII COUNTY
CHART IX-C

1/

CHART TOTAL:	PERM	TEMP
General Funds:	17.00	--
Federal Funds:	--	

STATE OF HAWAI`I
UNIVERSITY OF HAWAI`I
UNIVERSITY OF HAWAI`I AT MĀNOA
COLLEGE OF TROPICAL AGRICULTURE AND
HUMAN RESOURCES
ORGANIZATION CHART

MAUI COUNTY
CHART IX-D

OFFICE OF THE ASSOCIATE DEAN AND ASSOCIATE DIRECTOR FOR
COOPERATIVE EXTENSION

MAUI COUNTY Org Code: MAMCTR		
County Administrator, #89215		1.00
KAHULUI		
Secretary II, SR-14, #13714		1.00
KULA		
Research Support, Sr., PBB, #97109		1.00
Agr Res Tech IV, SR-14, #436		1.00
Agr Res Tech III, SR-11, #00406, #12900		2.00
MOLOKAI		
Operations Coordinator, PBA, #97111		1.00
Research Support, PBA, #97106		1.00
Agr Res Tech IV, SR-14, #36749		1.00

Federal Positions		
Agr Res Tech VI, SR-18, #415		1.00 (N)
Agr Res Tech IV, SR-14, #12898		1.00 (N)

CHART TOTAL:	PERM	TEMP
General Funds:	9.00	--
Federal Funds:	2.00	