

1\ #89309 in MAVCS also serves as Dean of Students and oversees Student Co-Curricular Success.
2\ Collaborate with other equity related programs at the campus level.
3\ Positions to be established within Student Success when budget permits for Onboarding and Commencement functions.

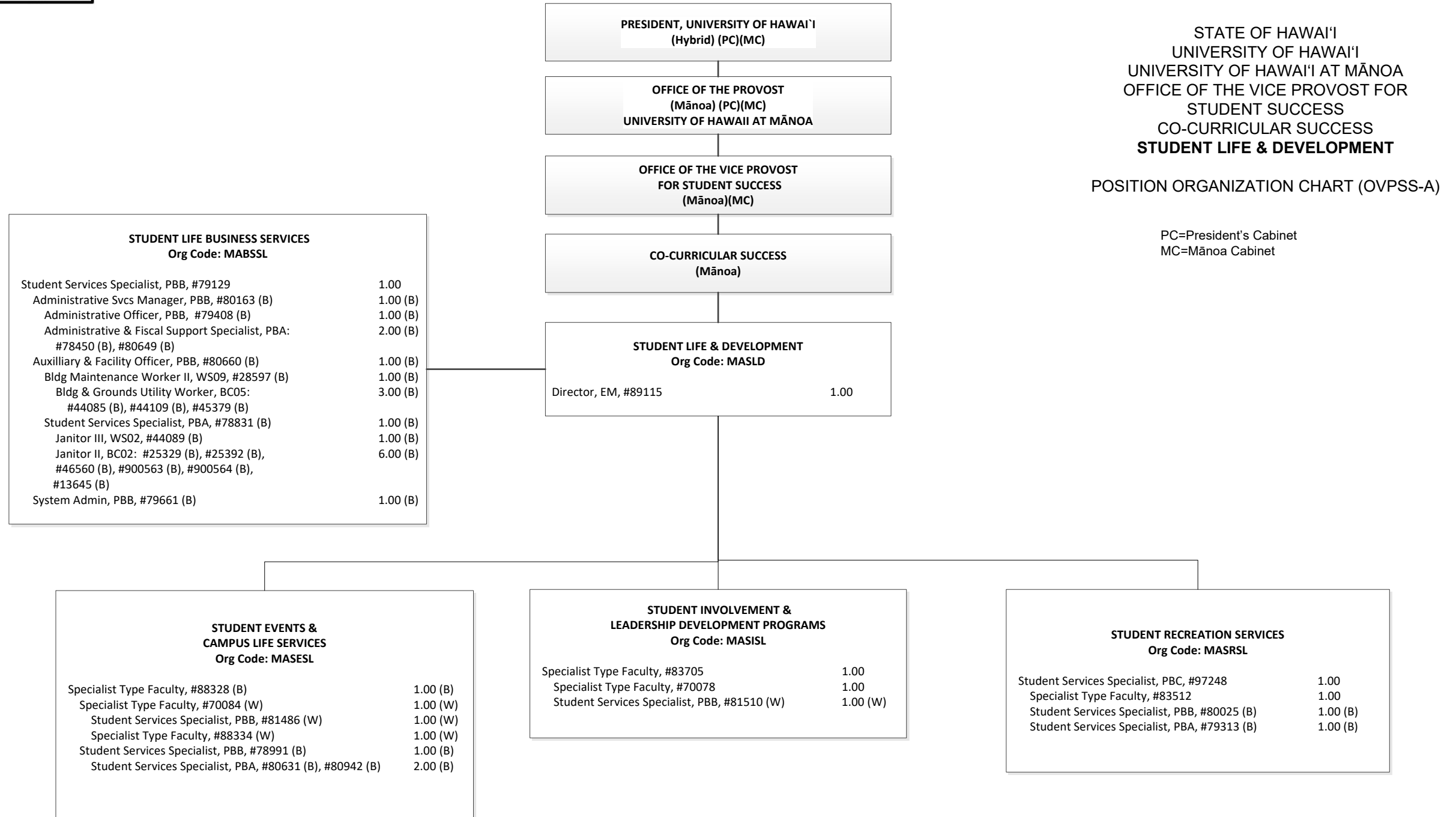
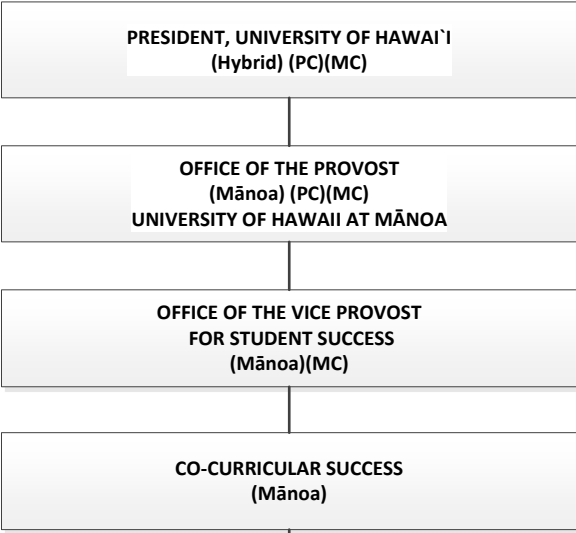


CHART TOTAL:	PERM	TEMP
General Funds:	6.00	--
Special Funds (B):	24.00	--
Revolving Funds (W):	4.00	--



STATE OF HAWAI'I
UNIVERSITY OF HAWAI'I
UNIVERSITY OF HAWAI'I AT MĀNOA
OFFICE OF THE VICE PROVOST FOR
STUDENT SUCCESS
CO-CURRICULAR SUCCESS
MĀNOA CAREER CENTER

POSITION ORGANIZATION CHART (OVPSS-B)

PC=President's Cabinet
MC=Mānoa Cabinet

MĀNOA CAREER CENTER
Org Code: MAMCC

Specialist Type Faculty, #82644	1.00
Student Services Specialist, PBB, #81434	1.00
IT Specialist, PBB, #78476	1.00
IT Specialist, PBA, #78604	1.00

CAREER SERVICES
Org Code: MACSCD

Specialist Type Faculty: #70072, #82701	2.00
--	------

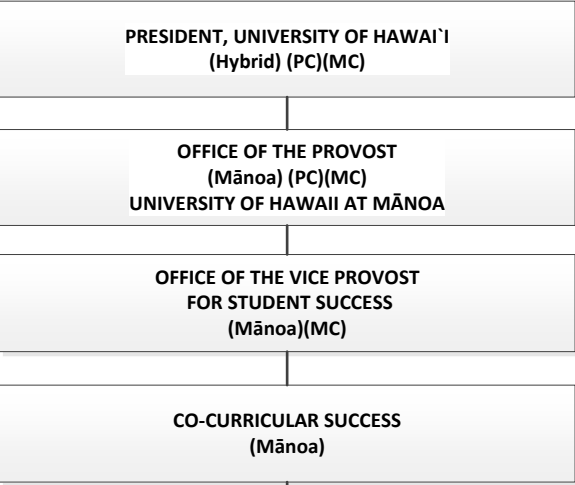
COOPERATIVE EDUCATION
Org Code: MACECD

Specialist Type Faculty: #82642, #88325	2.00
--	------

STUDENT EMPLOYMENT SERVICES
Org Code: MASECD

Student Services Specialist, PBB, #81481	1.00
Student Services Specialist, PBA, #78605	1.00

CHART TOTAL:	PERM	TEMP
General Funds:	10.00	--



STATE OF HAWAI'I
UNIVERSITY OF HAWAI'I
UNIVERSITY OF HAWAI'I AT MĀNOA
OFFICE OF THE VICE PROVOST FOR
STUDENT SUCCESS
CO-CURRICULAR SUCCESS
UNIVERSITY HEALTH SERVICES

POSITION ORGANIZATION CHART (OVPSS-C)

PC=President's Cabinet
MC=Mānoa Cabinet

ADMINISTRATIVE SUPPORT
Org Code: MAASHW

Operations Coordinator, PBB, #809441.00
Fiscal Specialist, Senior, PBB, #796461.00
Fiscal Specialist, PBB, #97007 (W)1.00 (W)
Admin & Fiscal Support Sp, PBA, #797151.00
Admin & Fiscal Support Sp, PBA, #968851.00 (W)

UNIVERSITY HEALTH SERVICES
Org Code: MADRHW

Specialist and Director, #823411.00

HEALTH EDUCATION AND PROMOTION
Org Code: MAHPHW

Specialist Type Faculty, #883171.00
Specialist Type Faculty, #700791.00

MEDICAL STAFF
Org Code: MAMSHW

Advanced Practice Registered Nurse II, SR28, #41706 (W)1.00 (W)
Specialist Type Faculty:
#83261 (0.50) (W), #83397 (0.50) (W),
#84576 (0.50) (W), #84576A (0.50) (W)2.00 (W)

NURSING STAFF
Org Code: MANSHW

Registered Nurse IV, SR22, #10312 (W)1.00 (W)
Registered Nurse III, SR20:
#13615 (W), #13616 (W), #18091 (W),
#22672 (W)4.00 (W)

LABORATORY
Org Code: MALBHW

Medical Technologist, PBA, #806711.00

PHARMACY
Org Code: MAPHHW

Pharmacist, PBC, #78521 (0.50)0.50

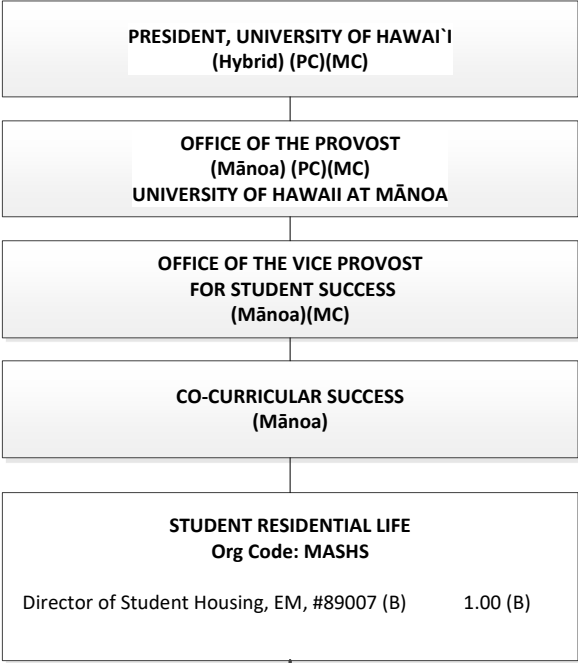
CHART TOTAL:	PERM	TEMP
General Funds:	7.50	--
Revolving Funds (W):	10.00	--

STATE OF HAWAI'I
UNIVERSITY OF HAWAI'I
UNIVERSITY OF HAWAI'I AT MĀNOA
OFFICE OF THE VICE PROVOST FOR
STUDENT SUCCESS
CO-CURRICULAR SUCCESS
STUDENT RESIDENTIAL LIFE

POSITION ORGANIZATION CHART (OVPSS-D)

PC=President's Cabinet
MC=Mānoa Cabinet

OPERATIONS Org Code: MAOPSH		
Auxiliary & Facilities Services Manager, PBB, #80629 (B)	1.00 (B)	
Auxiliary & Facilities Services Officer, PBA, #78141 (B)	1.00 (B)	
Auxiliary & Facilities Services Officer, PBA, #81942 (B)	1.00 (B)	
Registered Architect, PBB, #77005 (B)	1.00 (B)	
MAINTENANCE STAFF:		
Auxiliary & Facilities Services Officer, PBB, #79641 (B)	1.00 (B)	
Building Maintenance Supervisor I, F109, #900548 (B)	1.00 (B)	
Building Maintenance Worker I, BC09:		
#13578 (B), #31245 (B), #110585 (B), #900923 (B)	4.00 (B)	
#900513, #900514,	2.00	
Plumber I, BC10, #900603 (B)	1.00 (B)	
Electrician I, BC10, #900604 (B)	1.00 (B)	
CUSTODIAL & GROUNDS STAFF:		
Auxiliary & Facilities Services Officer, #97016 (B)	1.00 (B)	
Janitor III, WS02, #900850 (B), #900851 (B)	2.00 (B)	
Janitor II, BC02:	16.00 (B)	
#900852 (B), #900853 (B), #900854 (B), #900855 (B), #900856 (B),		
#900857 (B), #900858 (B), #900859 (B), #900860 (B), #900861 (B),		
#900862 (B), #900863 (B), #900864 (B), #900865 (B), #900866 (B),		
#900867 (B)		
Groundskeeper I, BC02, #31246 (B), #24251 (B)	2.00 (B)	
OPERATIONS SUPPORT:		
Environmental & Health Safety Sp, PBA, #81680 (B)	1.00 (B)	
General Laborer II, BC-03:	5.00 (B)	
#900918 (B), #900919 (B), #900920 (B), #900921 (B), #900922 (B)		

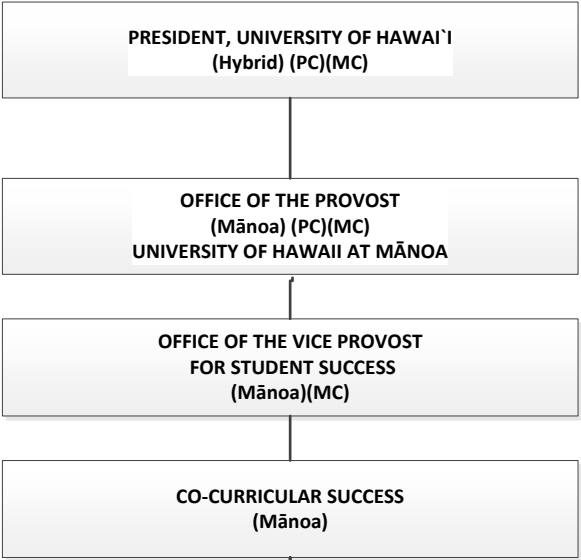


ADMINISTRATION Org Code: MAADSH		
Administrative Svcs Mgr, PBB, #81612 (B)	1.00 (B)	
FISCAL:		
Fiscal Manager, PBB, #80193 (B)	1.00 (B)	
Fiscal Specialist, PBB, #77029 (B)	1.00 (B)	
Cashier I, SR10, #28336 (B)	1.00 (B)	
Fiscal Specialist, PBA, #80298 (B)	1.00 (B)	
Office Assistant IV, SR10, #18701 (B)	1.00 (B)	
ASSIGNMENTS:		
Administrative Officer, PBB, #79170 (B)	1.00 (B)	
Student Services Specialist, PBA, #78732	1.00	
Student Services Specialist, PBA:	2.00 (B)	
#79330 (B), #79885 (B)		
CONFERENCES:		
Student Services Specialist, PBB, #80219 (B)	1.00 (B)	
PERSONNEL:		
Human Resources Sp, PBB, #81103 (B)	1.00 (B)	
Human Resources Sp, PBA, #78729	1.00	
INFORMATION TECHNOLOGY:		
IT Specialist, PBB, #78311 (B), #81361 (B)	2.00 (B)	
IT Specialist, PBA, #77097 (B)	1.00 (B)	

RESIDENTIAL LIFE Org Code: MARLSH		
Residence Life Mgr, PBB, #80630 (B)	1.00 (B)	
STUDENT CONDUCT & COMMUNITY STANDARDS:		
Residence Life Specialist, PBB, #81611 (B)	1.00 (B)	
Residence Life Specialist, PBA, #80598 (B)	1.00 (B)	
RESIDENTIAL AREAS:		
Residence Life Specialist, PBB:	3.00 (B)	
#80594 (B), #80597 (B), #80825 (B)		
Office Assistant III, SR08,#23582 (B)	1.00 (B)	
Residence Life Specialist, PBA:	2.00 (B)	
#80924 (B), #80764 (B)		
HALL STAFF:		
Residence Life Specialist, PBA:		
#78542 (B), #78728 (B) , #78959 (B), #78960 (B),	7.00 (B)	
#78961 (B), #78962 (B), #80595 (B)		
#78730 , #78731	2.00	

* Abolished; count retained: Building Maintenance Worker I, #31242, & Office Assistant III, #28545, 2.00 (B)

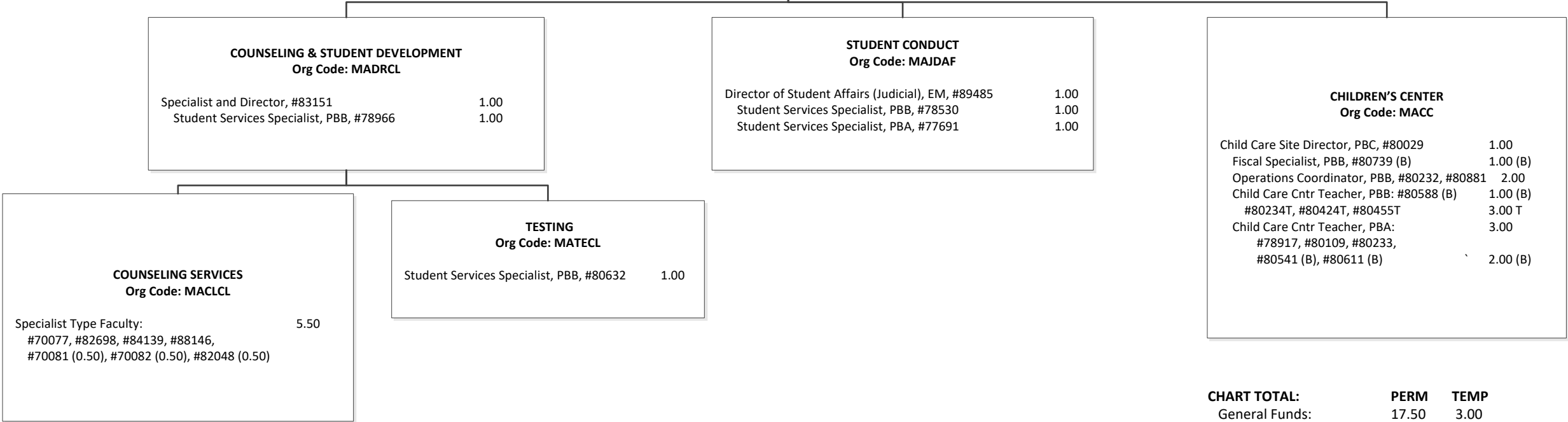
CHART TOTAL:	PERM	TEMP
General Funds:	6.00	--
Special Funds (B):	72.00	--

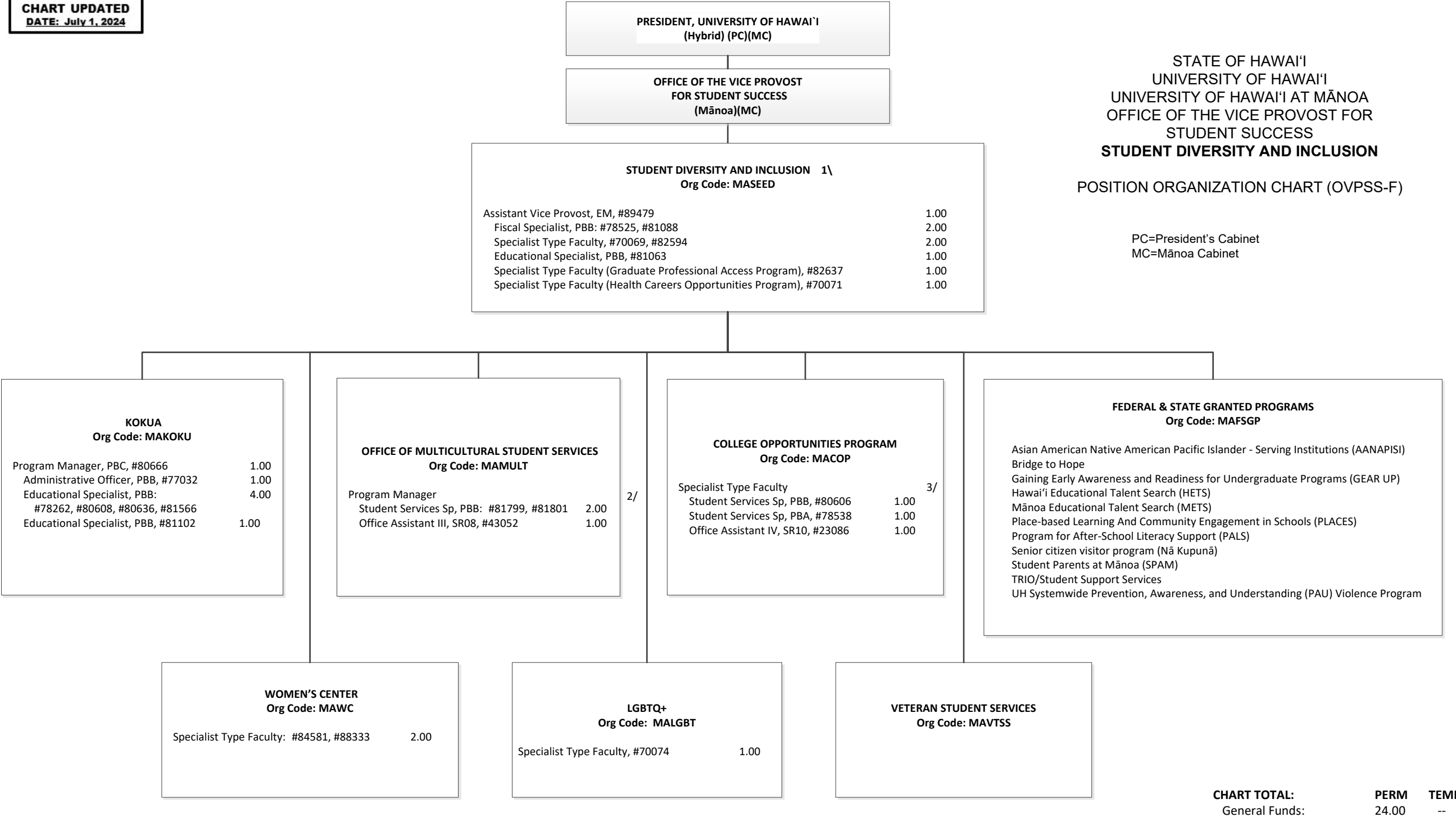


STATE OF HAWAIʻI
UNIVERSITY OF HAWAIʻI
UNIVERSITY OF HAWAIʻI AT MĀNOA
OFFICE OF THE VICE PROVOST FOR
STUDENT SUCCESS
CO-CURRICULAR SUCCESS
COUNSELING & STUDENT DEVELOPMENT
STUDENT CONDUCT
CHILDREN'S CENTER

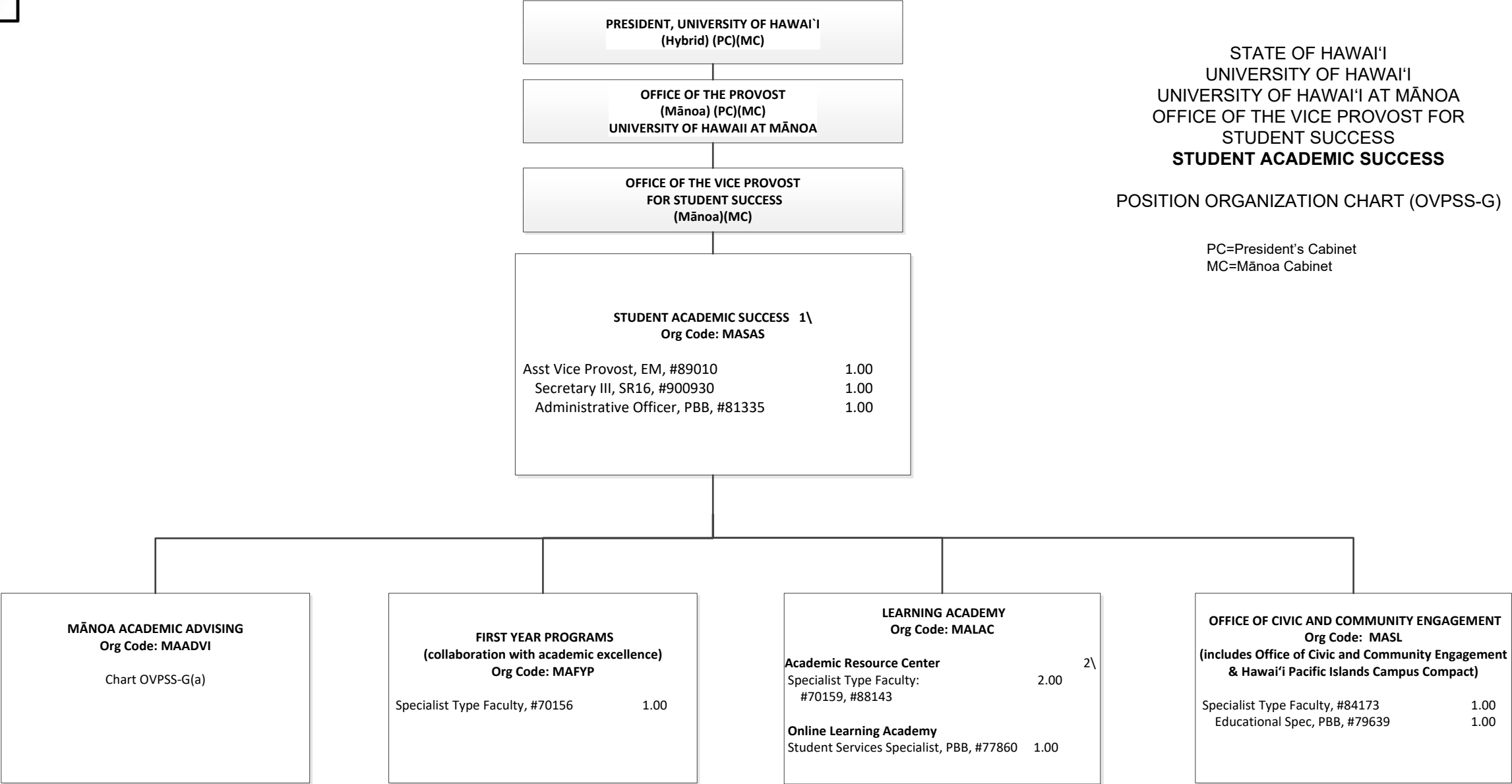
POSITION ORGANIZATION CHART (OVPSS-E)

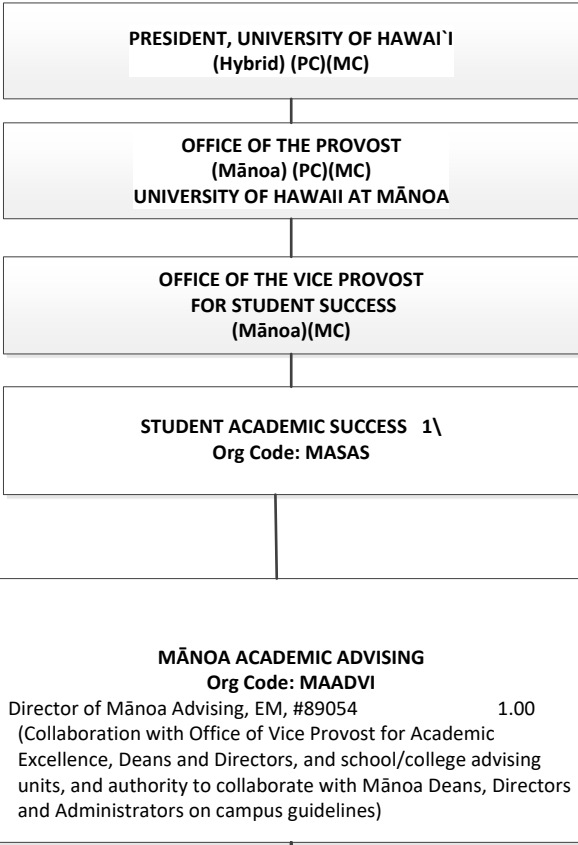
PC=President's Cabinet
MC=Mānoa Cabinet





1\ Collaborate with other equity related programs at the campus level.
2\ To be re-established when budget permits
3\ Position #83548 swept to Manoa Pool 8/24/23





STATE OF HAWAI'I
UNIVERSITY OF HAWAI'I
UNIVERSITY OF HAWAI'I AT MĀNOA
OFFICE OF THE VICE PROVOST FOR
STUDENT SUCCESS
STUDENT ACADEMIC SUCCESS

POSITION ORGANIZATION CHART (OVPSS-G(a))

PC=President's Cabinet
MC=Mānoa Cabinet

MĀNOA ADVISING CENTER
Org Code: MAMAC

Specialist Type Faculty, #70062 1.00
Specialist Type Faculty:
#70155, #70158, #70160, #82671,
#82903, #84963 6.00

MĀNOA TRANSFER COORDINATION CENTER
Org Code: MAMTCC

Specialist Type Faculty, #82300 1.00
Specialist Type Faculty:
#85633, #86126 2.00

PRE-HEALTH/PRE-LAW ADVISING
Org Code: MAHLAC

Specialist Type Faculty, #70063 1.00

STUDENT ATHLETE ACADEMIC SERVICES
Org Code: MASAAS

Chair (appointed from Faculty positions)
Specialist Type Faculty: 6.00
#70157, #82079, #82168, #83392,
#84175, #88937
Academic Advisor, PBB, #81569 1.00
Administrative Officer, PBB, #78343 1.00
Graduate Assistant: 1.00
#70066 (0.50), #70067 (0.50)

CHART TOTAL:	PERM	TEMP
General Funds:	21.00	--

1\ Positions to be established within Student Success when budget permits for Onboarding and Commencement functions.