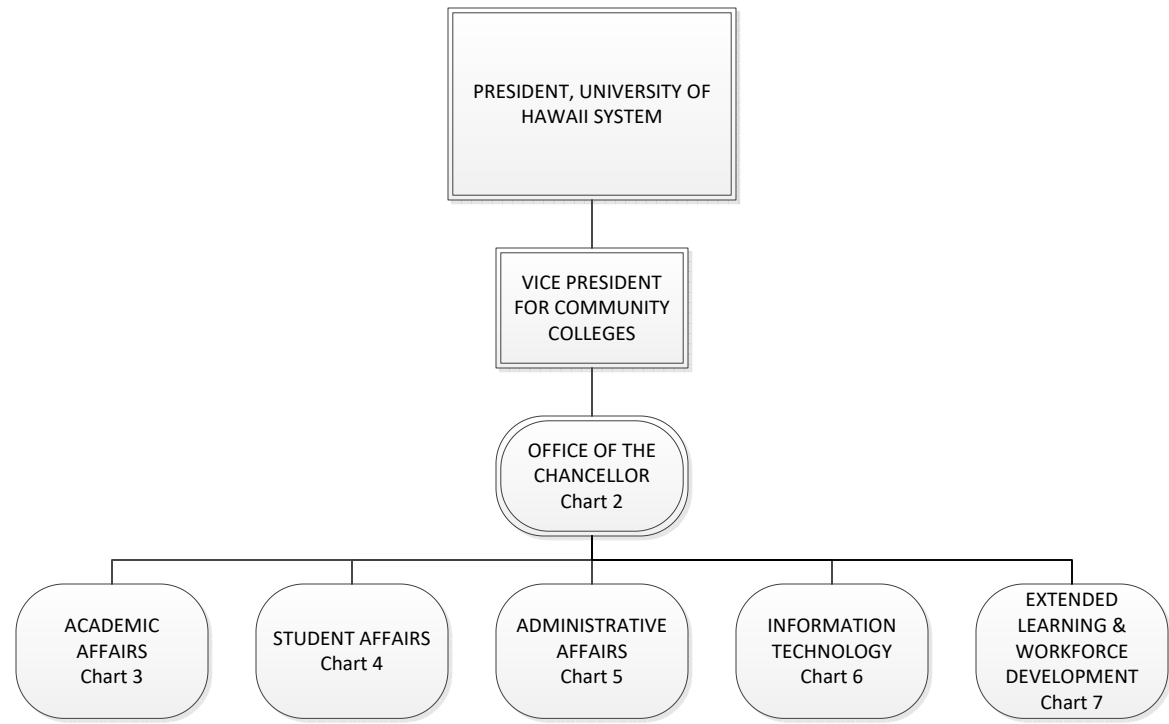


CHART UPDATED
DATE: July 1, 2023



STATE OF HAWAII
UNIVERSITY OF HAWAII
MAUI COLLEGE

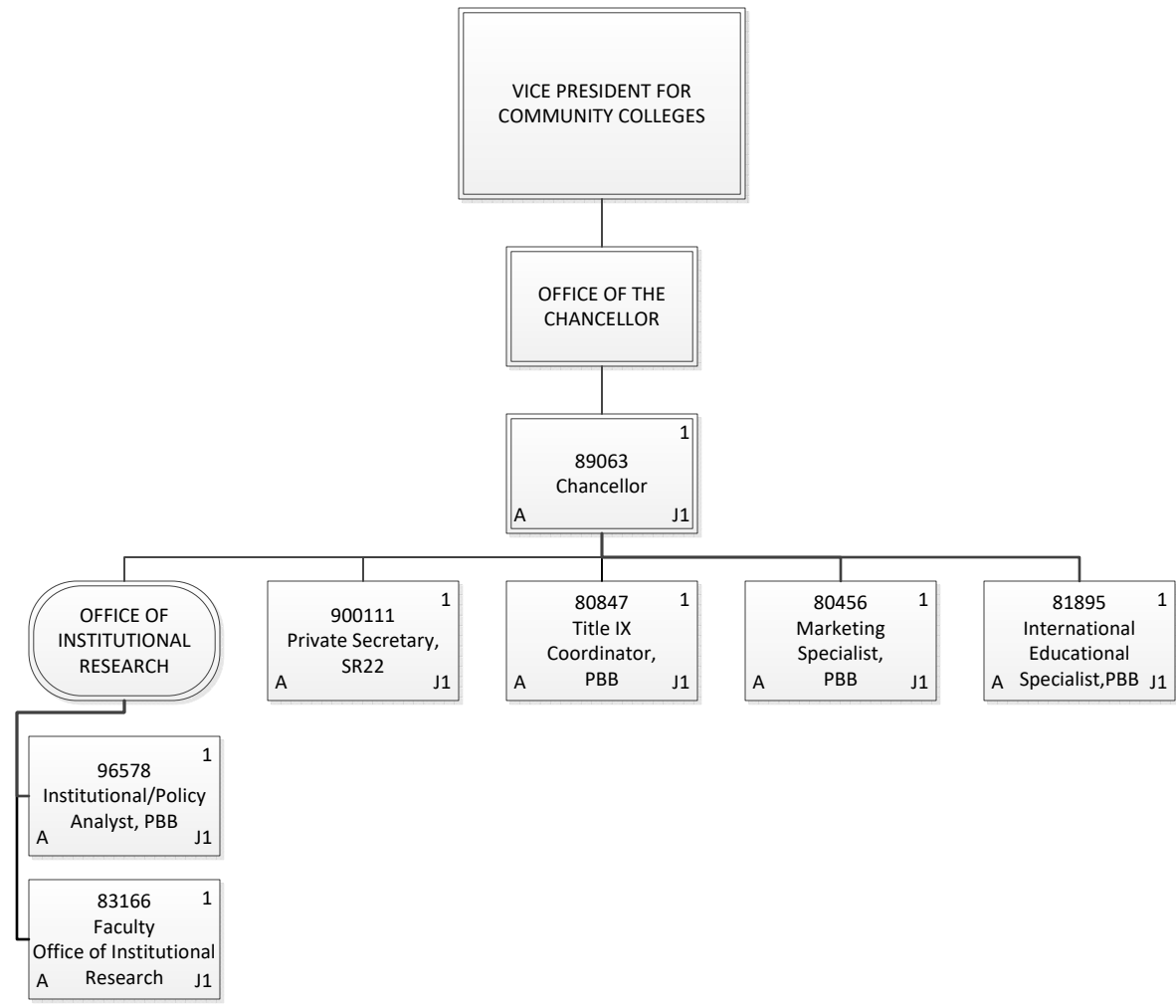
Position Organization Chart

Chart 1

| | |
|--------------------|---------------|
| Permanent | 217.25 |
| General Fund | 215.25 |
| Revolving Fund | 2.00 |
| Temporary | 1.00 |
| General Fund | 1.00 |
| Grand Total | 218.25 |

CHART UPDATED
DATE: July 1, 2023

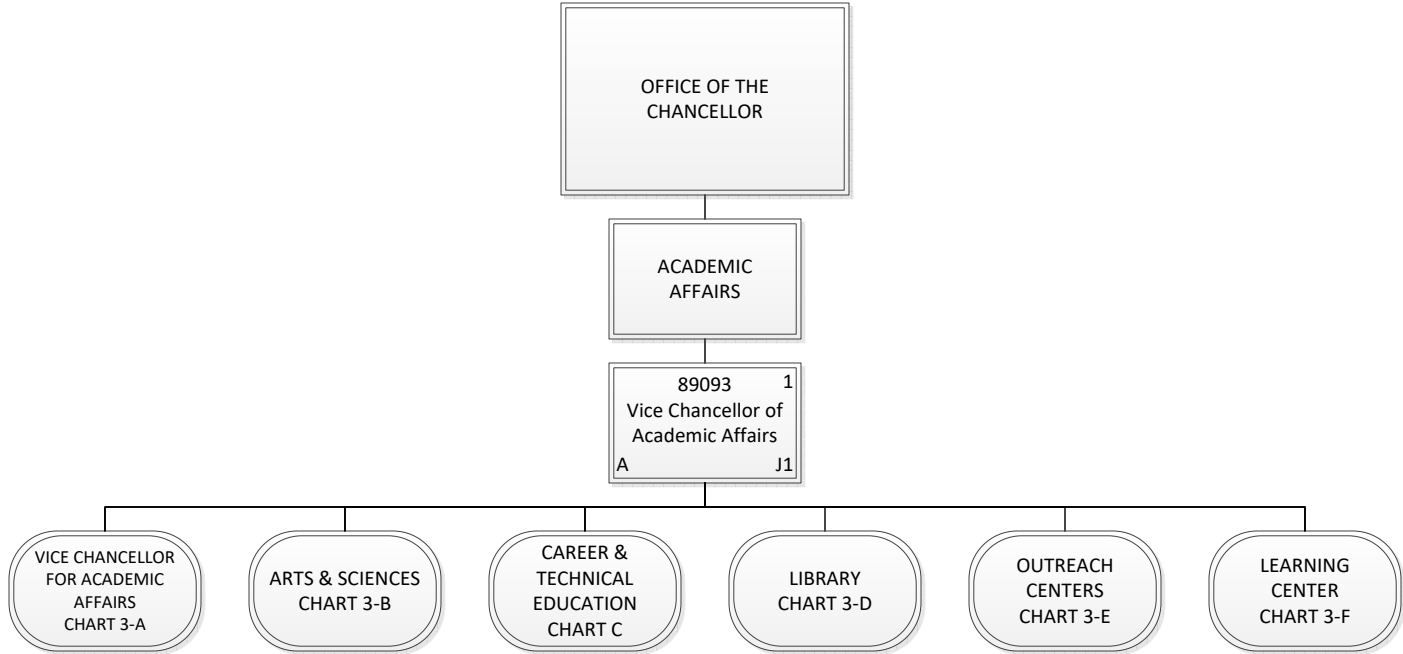
STATE OF HAWAII
 UNIVERSITY OF HAWAII
 MAUI COLLEGE
Position Organization Chart
 Chart 2



| | |
|--------------------|-------------|
| Permanent | 7.00 |
| General Fund | 7.00 |
| Grand Total | 7.00 |

CHART UPDATED
DATE: July 1, 2023

STATE OF HAWAII
UNIVERSITY OF HAWAII
MAUI COLLEGE
Position Organization Chart
Chart 3



| | |
|--------------------|-------------|
| Permanent | 1.00 |
| General Fund | 1.00 |
| Grand Total | 1.00 |

CHART UPDATED
DATE: July 1, 2023

ACADEMIC AFFAIRS

Vice Chancellor
For Academic
Affairs Office

FACULTY
COORDINATOR

81731 1
Instructional &
Student Support
A Specialist, PBA J1

17844 1
Secretary II,
SR14
A J1

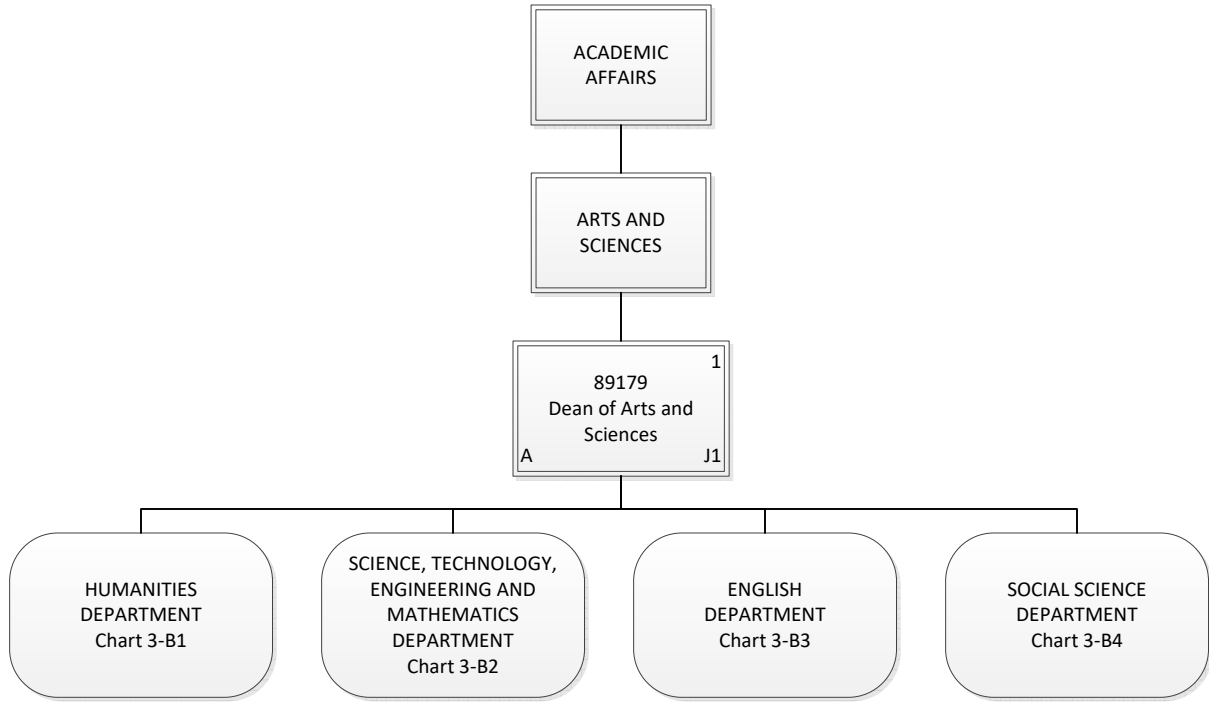
Faculty Advisor
(Appointed)
(Does not report to
89093)

STATE OF HAWAII
UNIVERSITY OF HAWAII
MAUI COLLEGE
Position Organization Chart
Chart 3-A

| | |
|--------------------|-------------|
| Permanent | 2.00 |
| General Fund | 2.00 |
| Grand Total | 2.00 |

CHART UPDATED
DATE: July 1, 2023

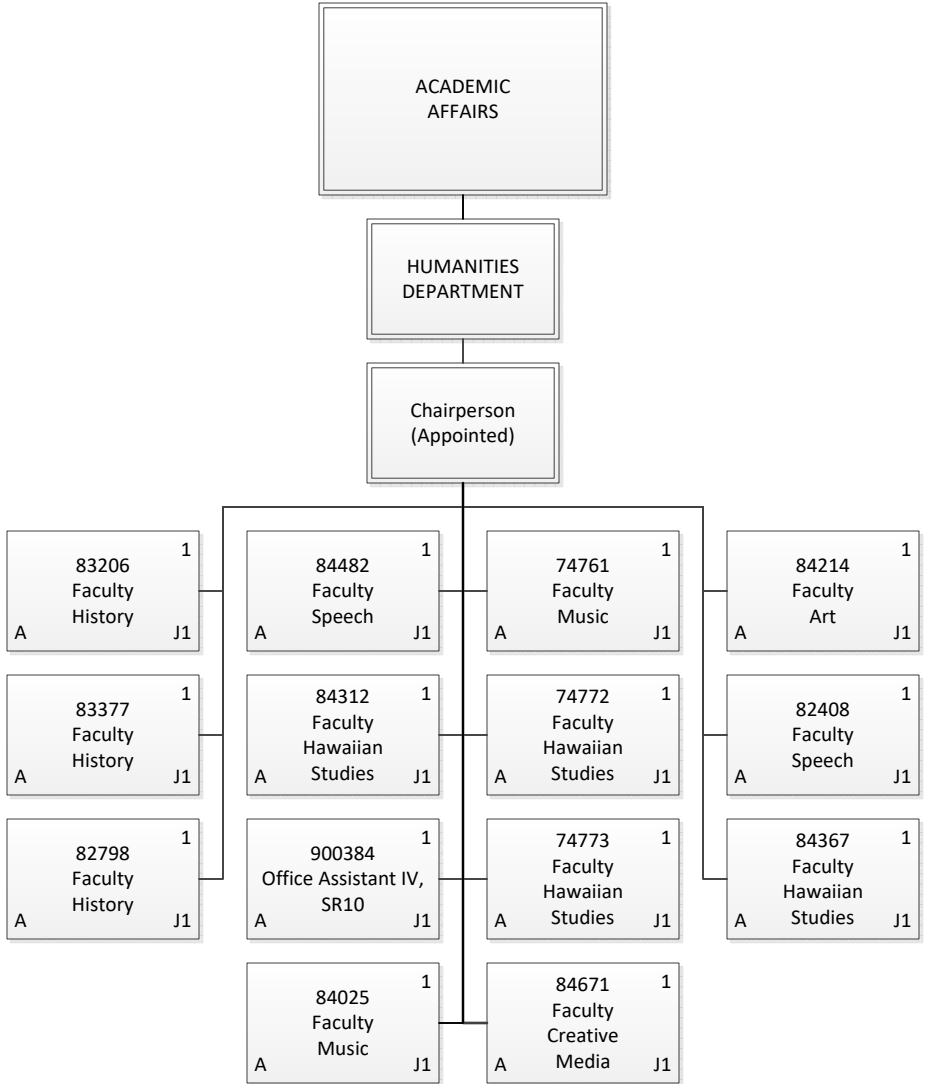
STATE OF HAWAII
UNIVERSITY OF HAWAII
MAUI COLLEGE
Position Organization Chart
Chart 3-B



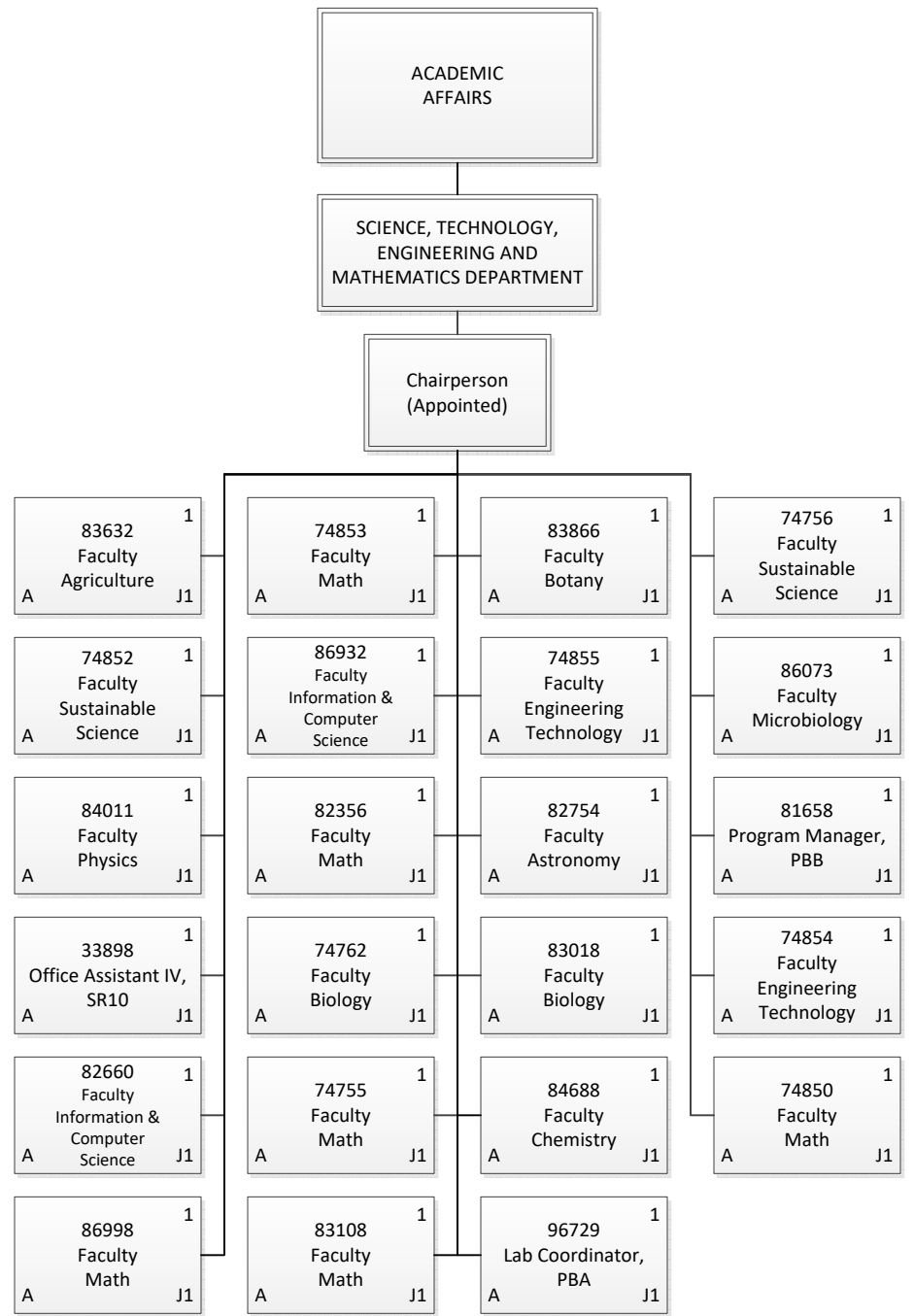
| | |
|--------------------|-------------|
| Permanent | 1.00 |
| General Fund | 1.00 |
| Grand Total | 1.00 |

CHART UPDATED
DATE: July 1, 2023

STATE OF HAWAII
 UNIVERSITY OF HAWAII
 MAUI COLLEGE
Position Organization Chart
 Chart 3-B1



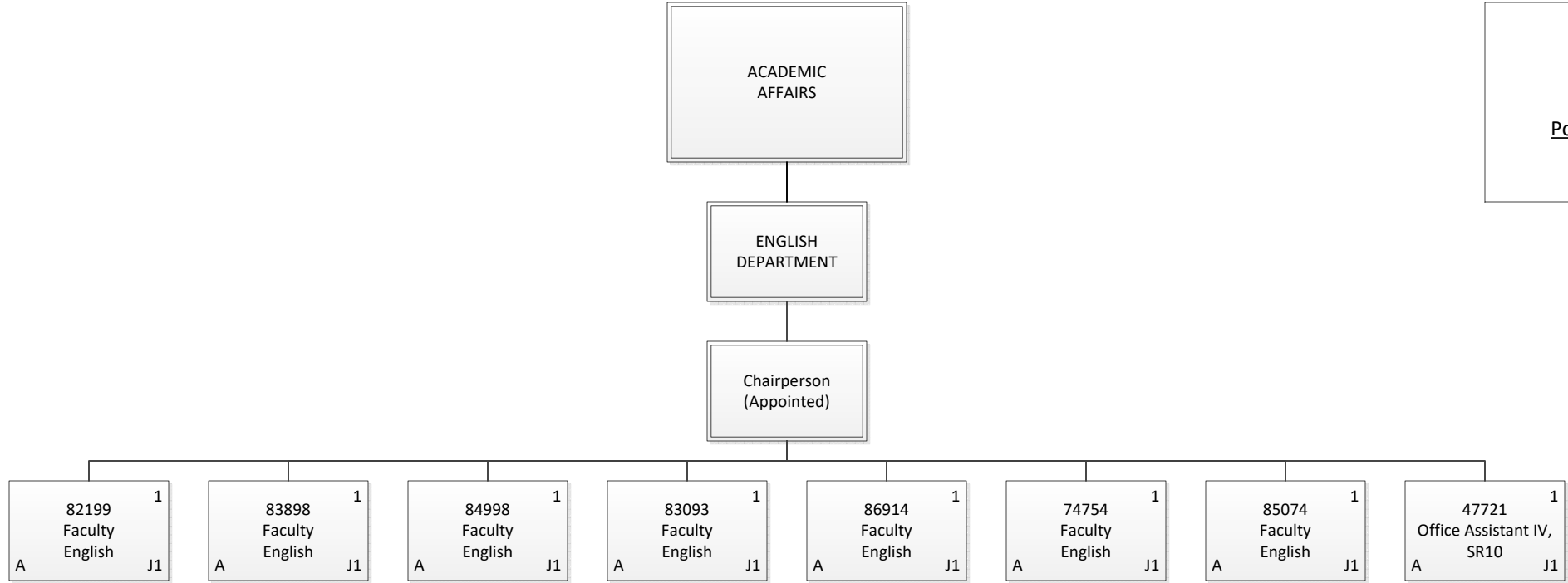
| | |
|--------------------|--------------|
| Permanent | 14.00 |
| General Fund | 14.00 |
| Grand Total | 14.00 |



| | |
|--------------------|--------------|
| Permanent | 23.00 |
| General Fund | 23.00 |
| Grand Total | 23.00 |

CHART UPDATED
DATE: July 1, 2023

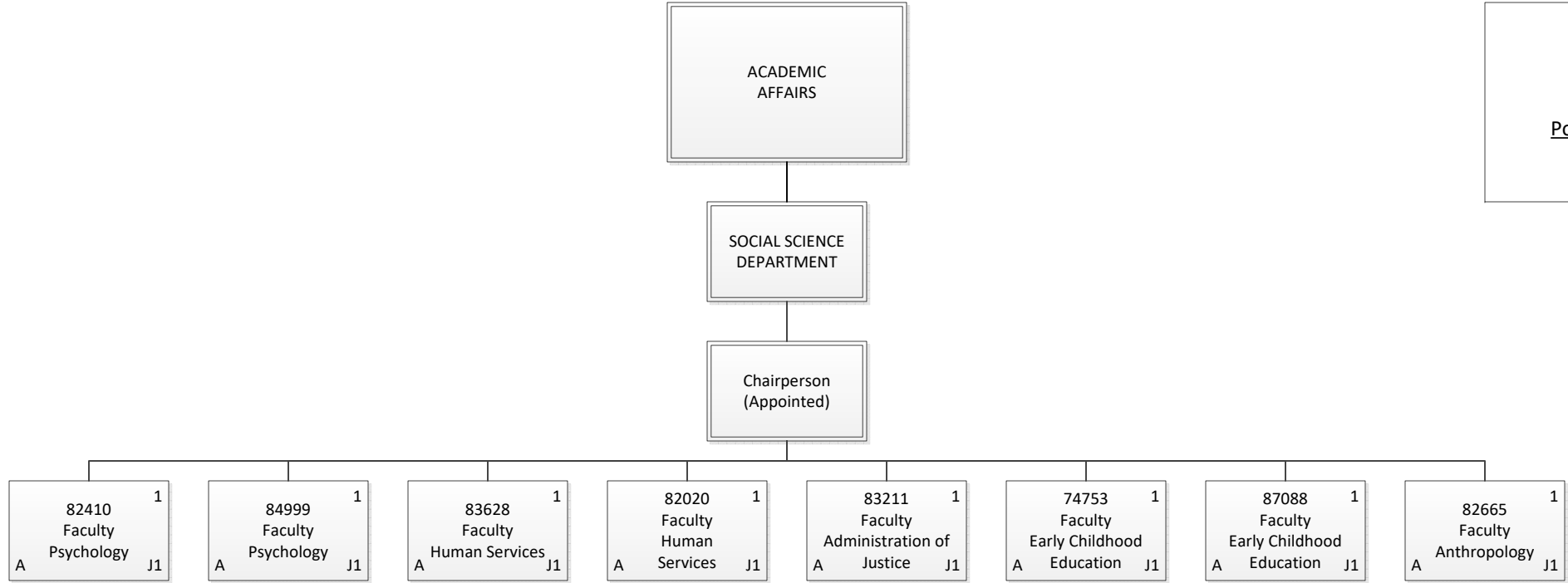
STATE OF HAWAII
 UNIVERSITY OF HAWAII
 MAUI COLLEGE
Position Organization Chart
 Chart 3-B3



| | |
|--------------------|-------------|
| Permanent | 8.00 |
| General Fund | 8.00 |
| Grand Total | 8.00 |

CHART UPDATED
DATE: July 1, 2023

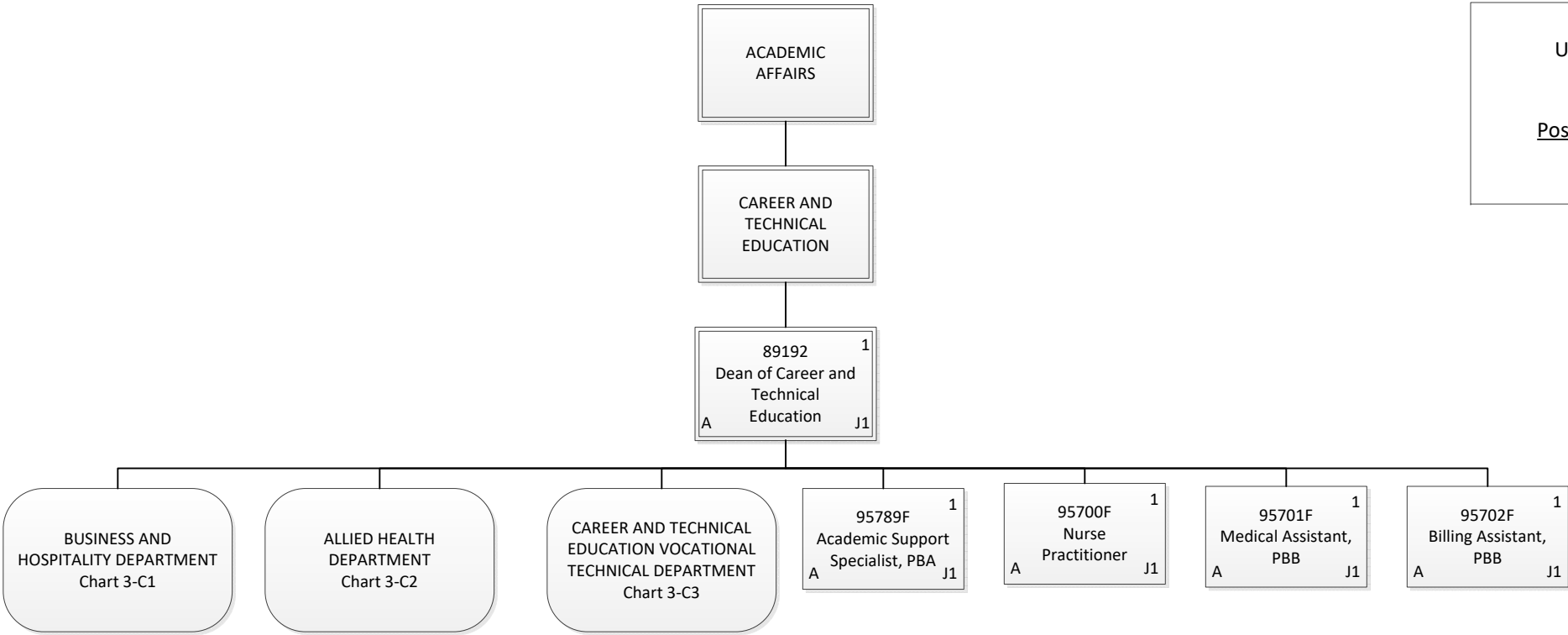
STATE OF HAWAII
 UNIVERSITY OF HAWAII
 MAUI COLLEGE
Position Organization Chart
 Chart 3-B4



| | |
|--------------------|-------------|
| Permanent | 8.00 |
| General Fund | 8.00 |
| Grand Total | 8.00 |

CHART UPDATED
DATE: July 1, 2023

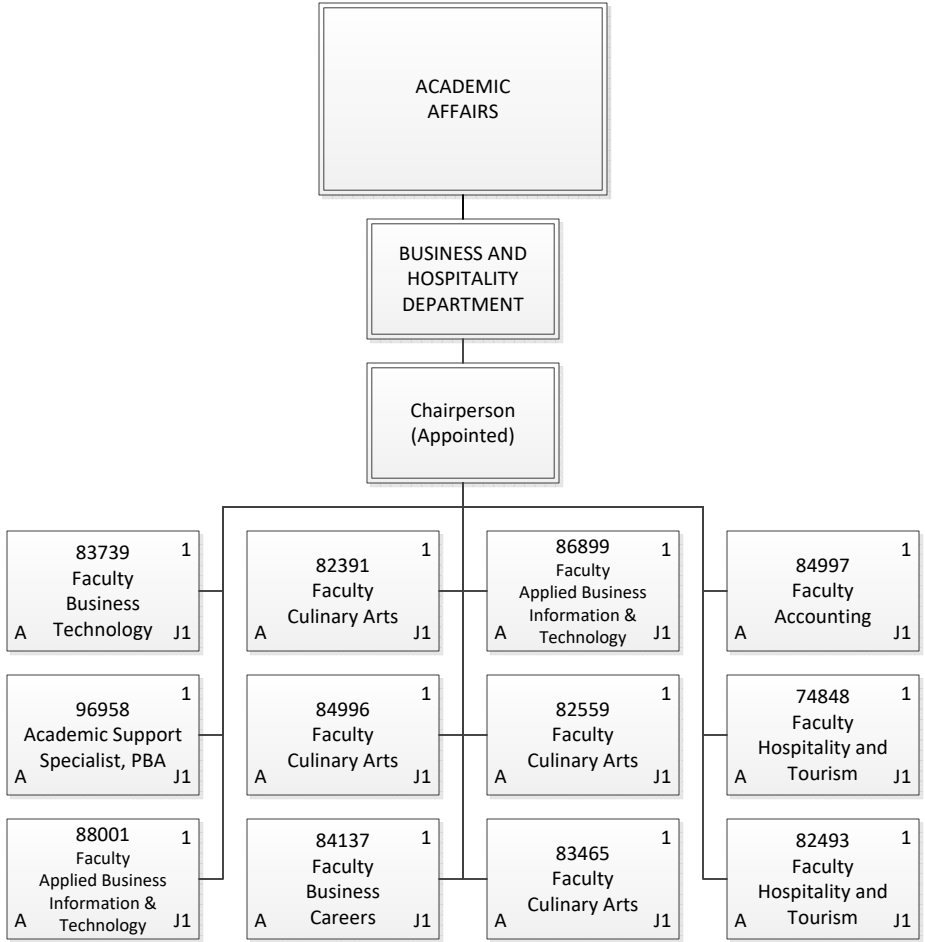
STATE OF HAWAII
 UNIVERSITY OF HAWAII
 MAUI COLLEGE
Position Organization Chart
 Chart 3-C



| | |
|--------------------|-------------|
| Permanent | 5.00 |
| General Fund | 5.00 |
| Grand Total | 5.00 |

CHART UPDATED
DATE: July 1, 2023

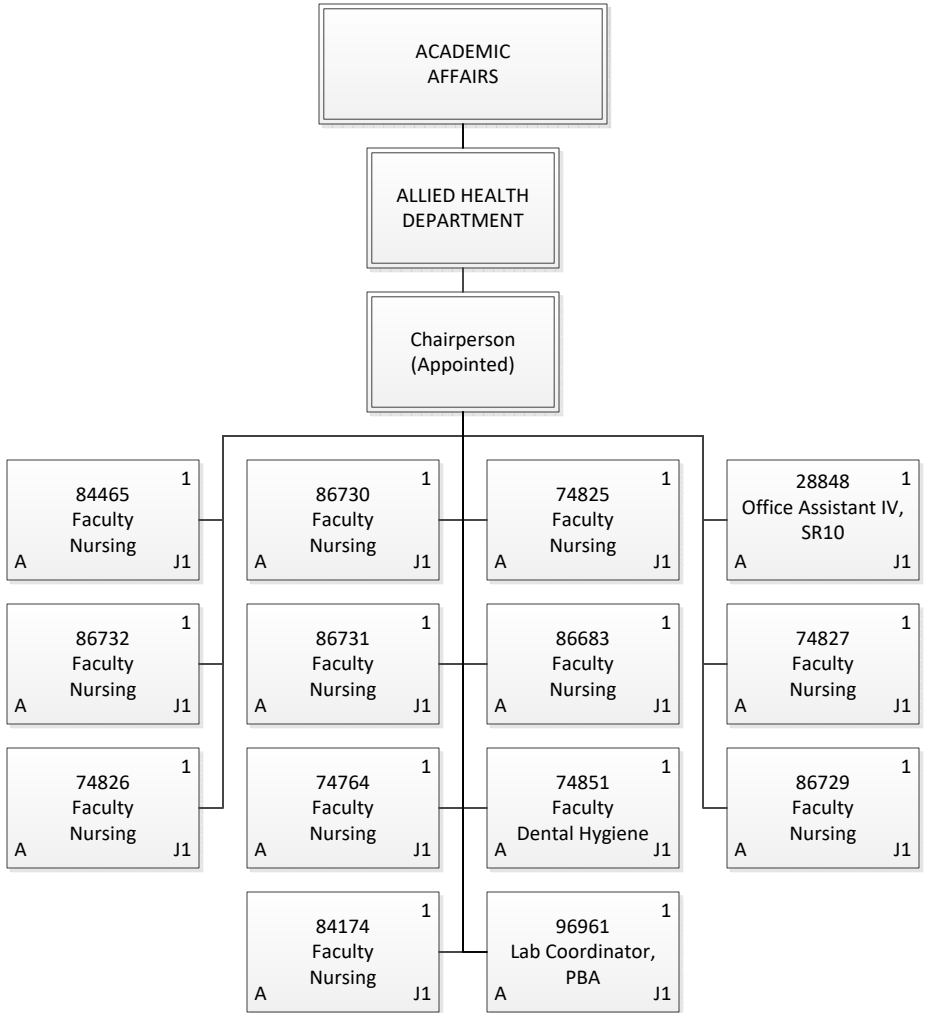
STATE OF HAWAII
 UNIVERSITY OF HAWAII
 MAUI COLLEGE
Position Organization Chart
 Chart 3-C1



| | |
|--------------------|--------------|
| Permanent | 12.00 |
| General Fund | 12.00 |
| Grand Total | 12.00 |

CHART UPDATED
DATE: July 1, 2023

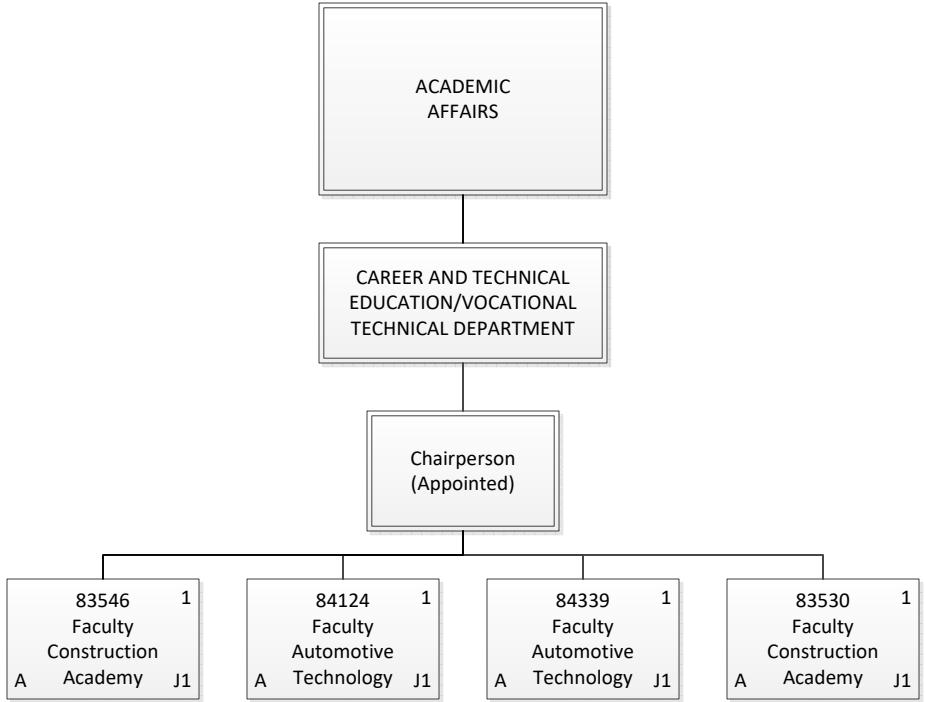
STATE OF HAWAII
 UNIVERSITY OF HAWAII
 MAUI COLLEGE
Position Organization Chart
 Chart 3-C2



| | |
|--------------------|--------------|
| Permanent | 14.00 |
| General Fund | 14.00 |
| Grand Total | 14.00 |

CHART UPDATED
DATE: July 1, 2023

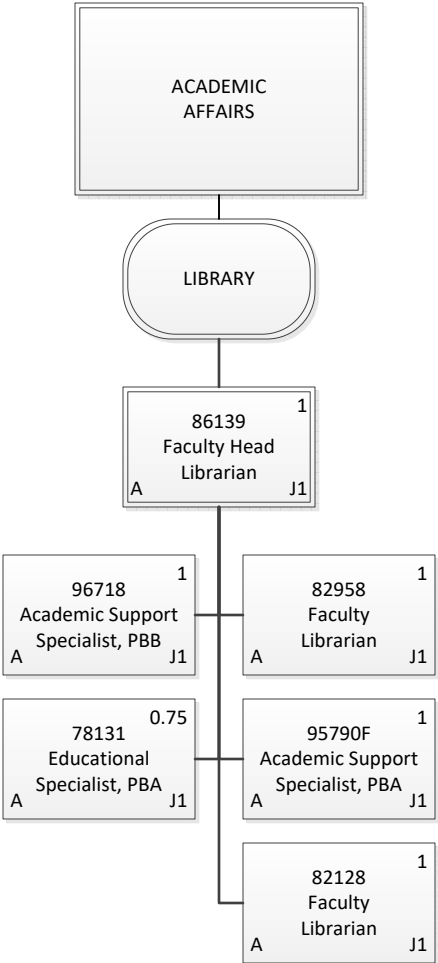
STATE OF HAWAII
UNIVERSITY OF HAWAII
MAUI COLLEGE
Position Organization Chart
Chart 3-C3



| | |
|--------------------|-------------|
| Permanent | 4.00 |
| General Fund | 4.00 |
| Grand Total | 4.00 |

CHART UPDATED
DATE: July 1, 2023

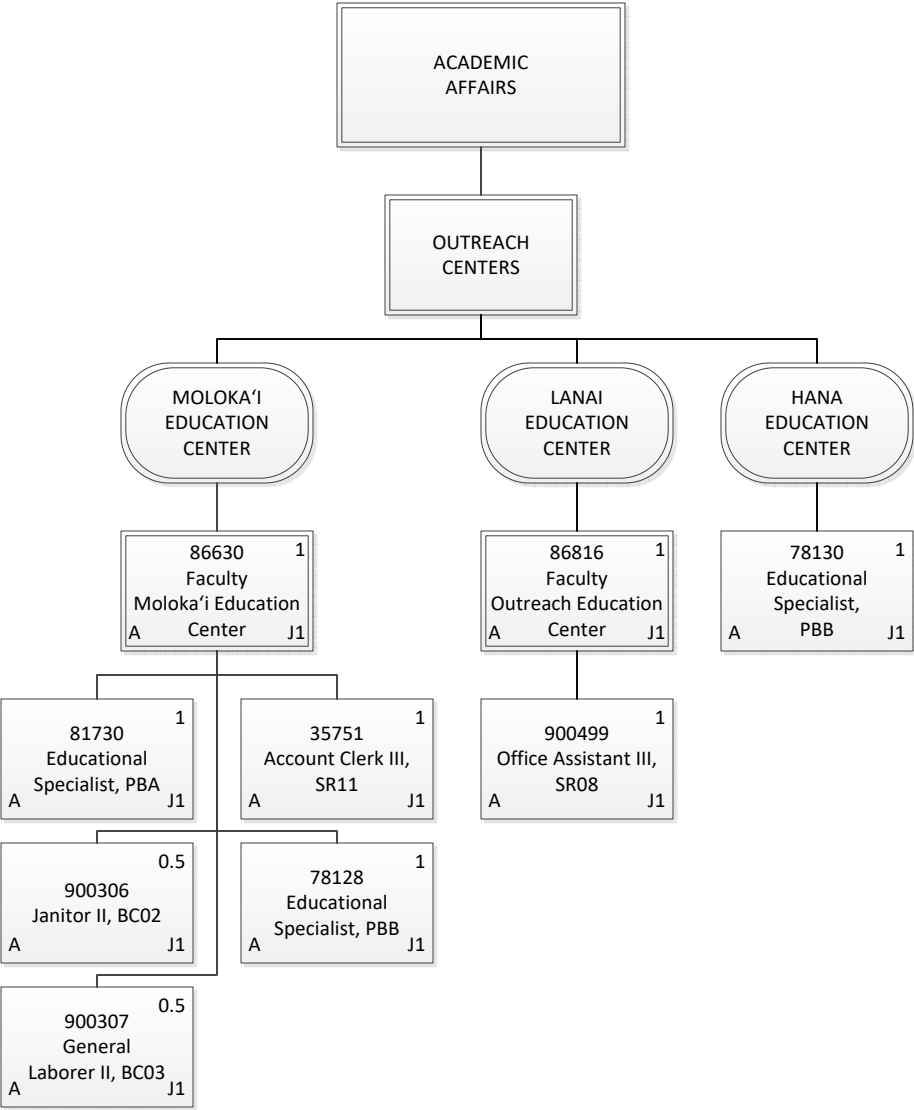
STATE OF HAWAII
 UNIVERSITY OF HAWAII
 MAUI COLLEGE
Position Organization Chart
 Chart 3-D



| | |
|--------------------|-------------|
| Permanent | 5.75 |
| General Fund | 5.75 |
| Grand Total | 5.75 |

CHART UPDATED
DATE: July 1, 2023

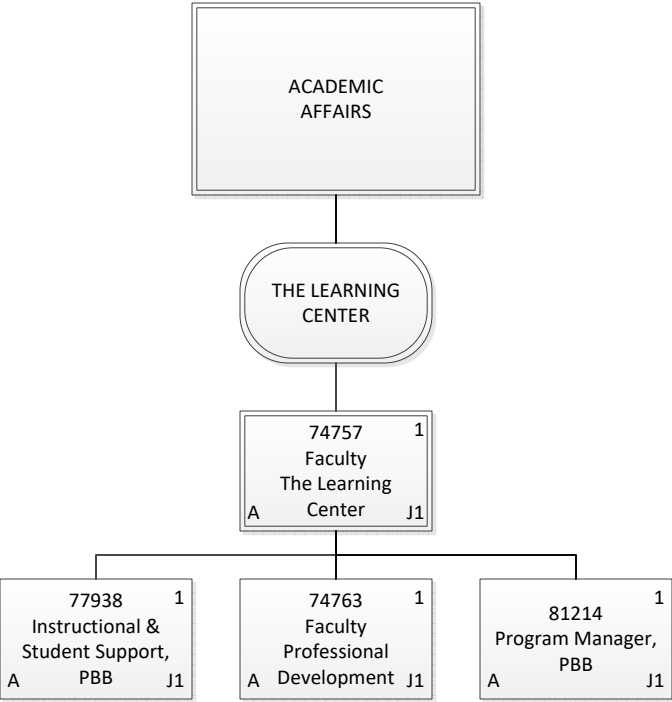
STATE OF HAWAII
 UNIVERSITY OF HAWAII
 MAUI COLLEGE
Position Organization Chart
 Chart 3-E



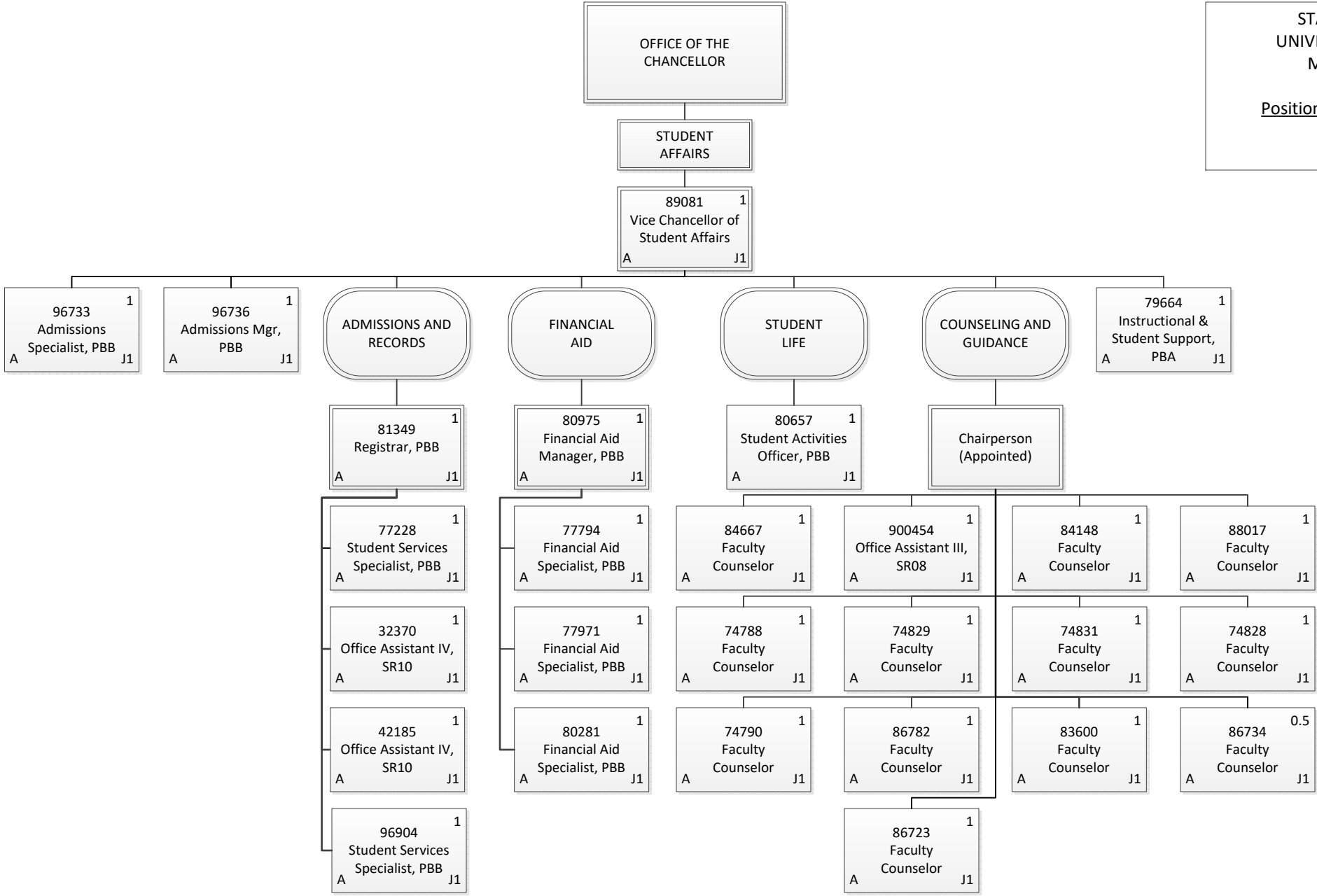
| | |
|--------------------|-------------|
| Permanent | 8.00 |
| General Func | 8.00 |
| Grand Total | 8.00 |

CHART UPDATED
DATE: July 1, 2023

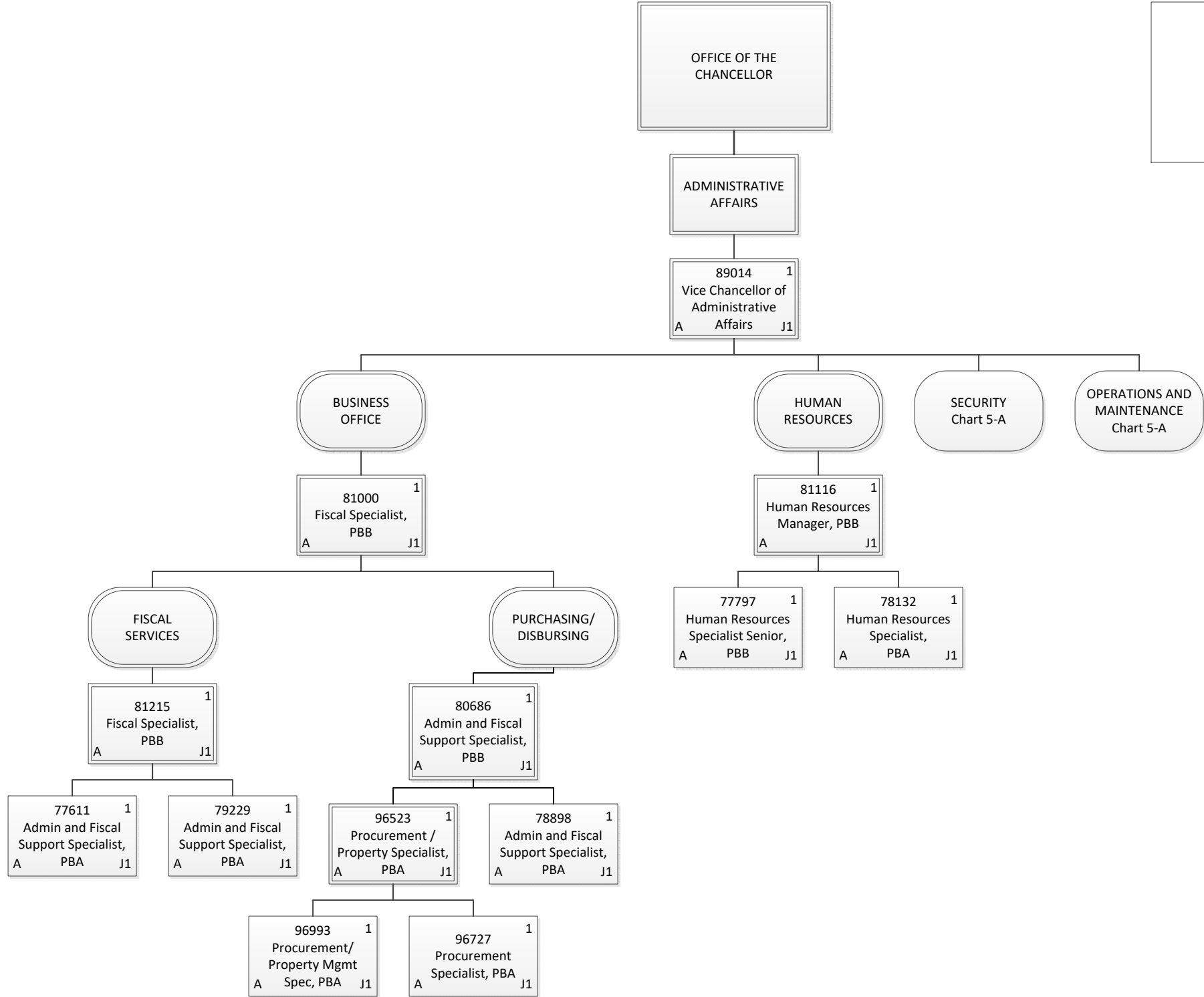
STATE OF HAWAII
UNIVERSITY OF HAWAII
MAUI COLLEGE
Position Organization Chart
Chart 3-F



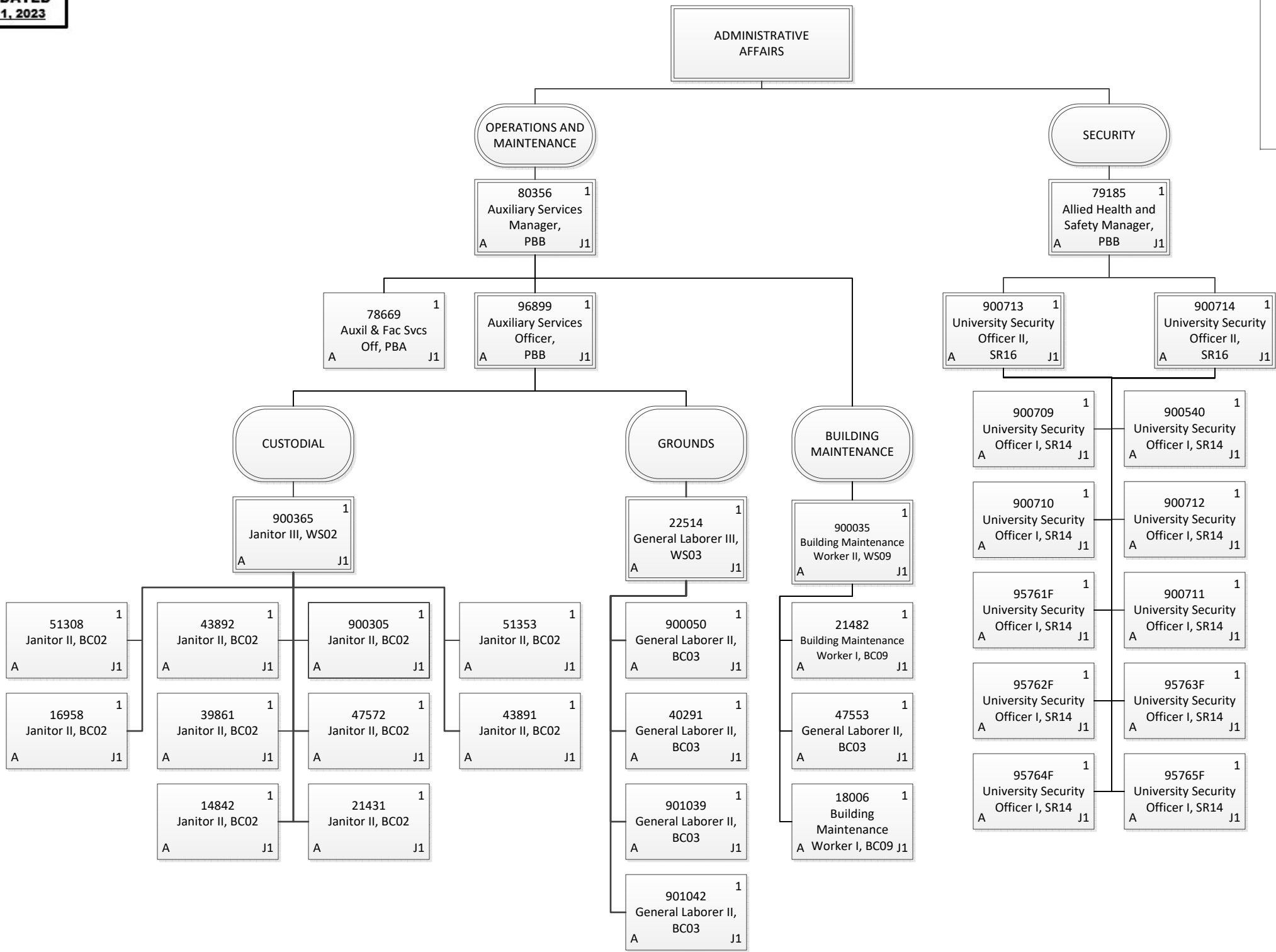
| | |
|--------------------|-------------|
| Permanent | 4.00 |
| General Fund | 4.00 |
| Grand Total | 4.00 |



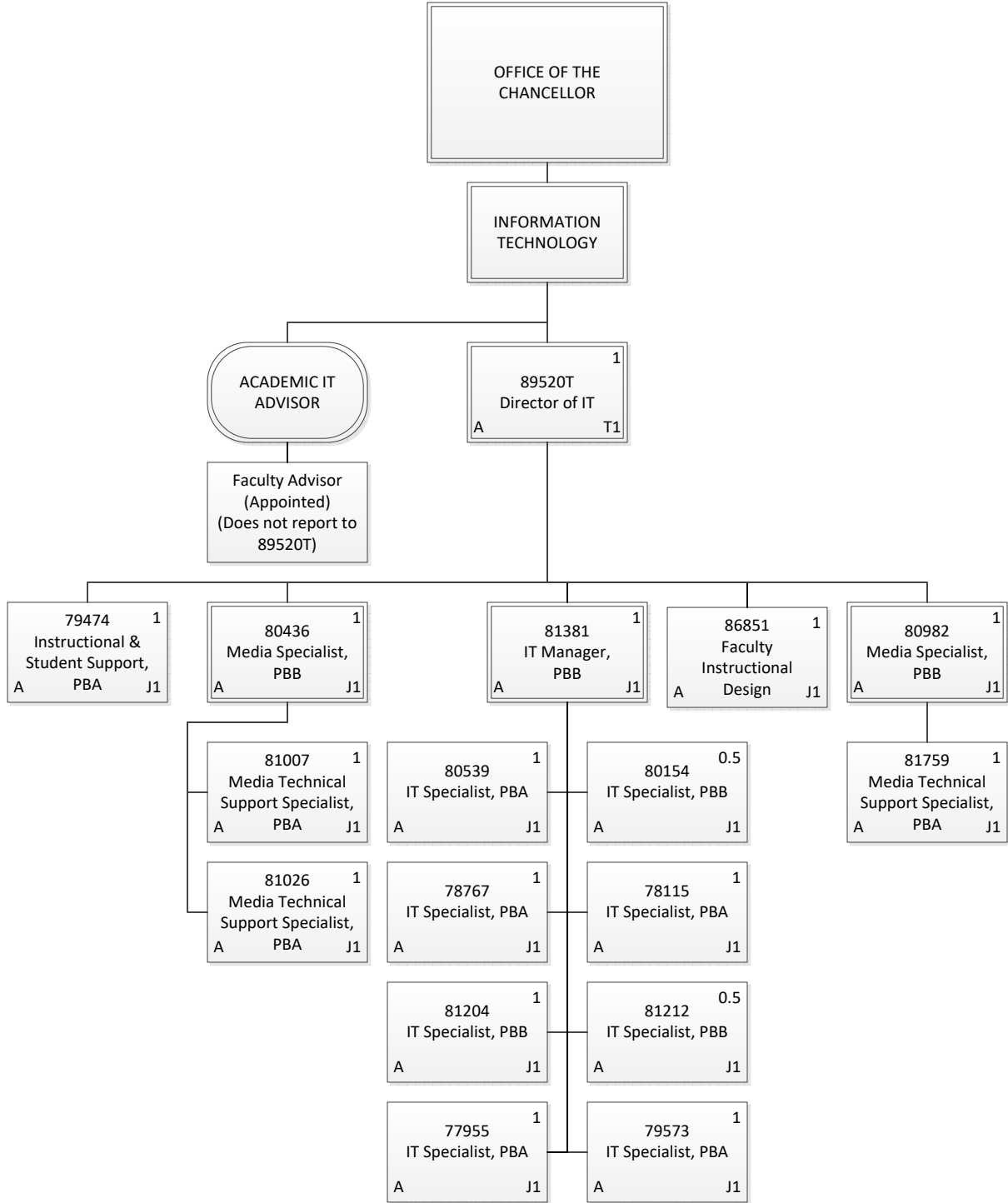
| | |
|--------------------|--------------|
| Permanent | 26.50 |
| General Fund | 26.50 |
| Grand Total | 26.50 |



| | |
|--------------------|--------------|
| Permanent | 13.00 |
| General Fund | 13.00 |
| Grand Total | 13.00 |



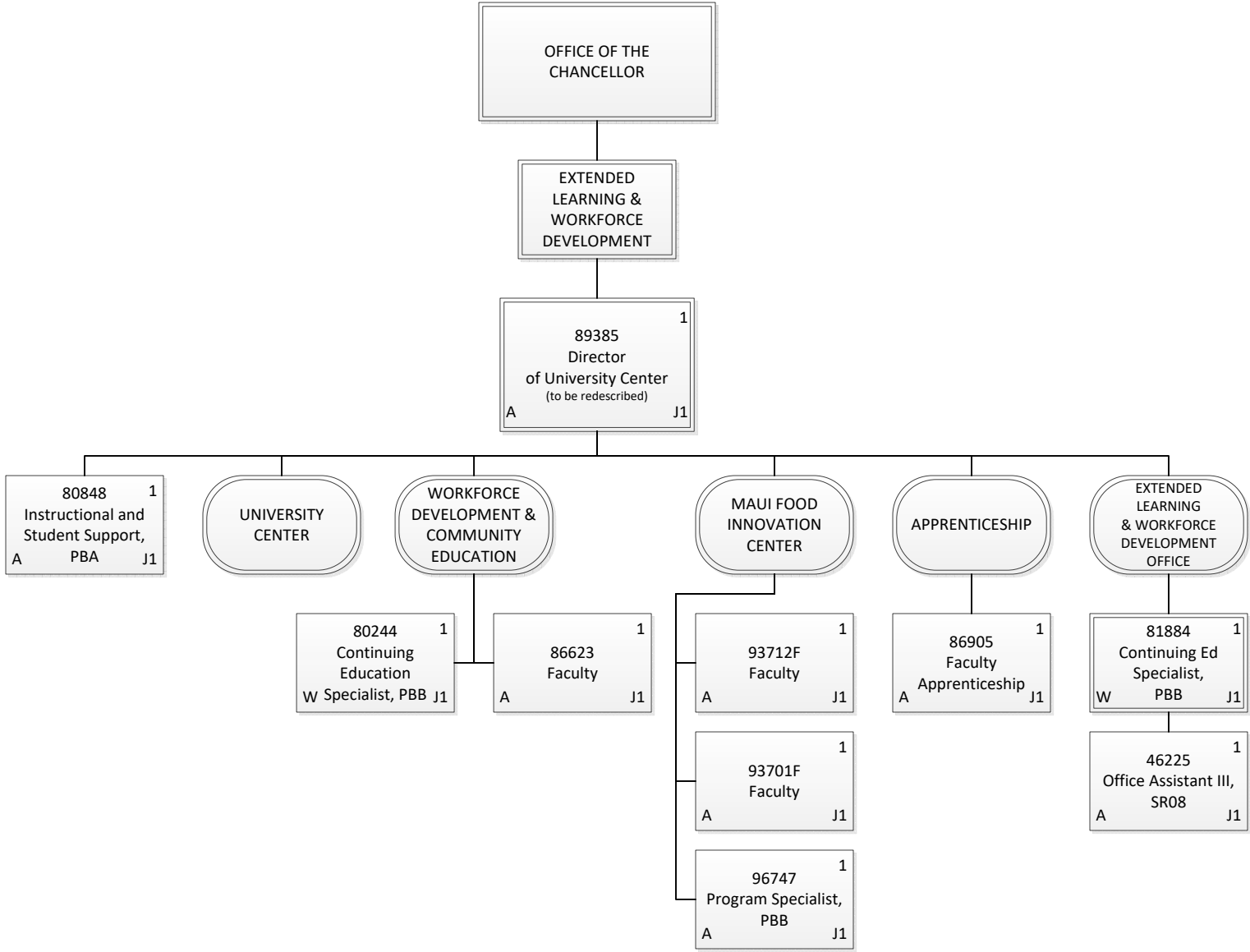
| | |
|--------------------|--------------|
| Permanent | 36.00 |
| General Fund | 36.00 |
| Grand Total | 36.00 |



| | |
|--------------------|--------------|
| Permanent | 15.00 |
| General Fund | 15.00 |
| Temporary | 1.00 |
| General Fund | 1.00 |
| Grand Total | 16.00 |

CHART UPDATED
DATE: July 1, 2023

STATE OF HAWAII
 UNIVERSITY OF HAWAII
 MAUI COLLEGE
Position Organization Chart
 Chart 7



| | |
|--------------------|--------------|
| Permanent | 10.00 |
| General Fund | 8.00 |
| Revolving Fund | 2.00 |
| Grand Total | 10.00 |