

OFFICE OF THE PRESIDENT
 UNIVERSITY OF HAWAI'I SYSTEM

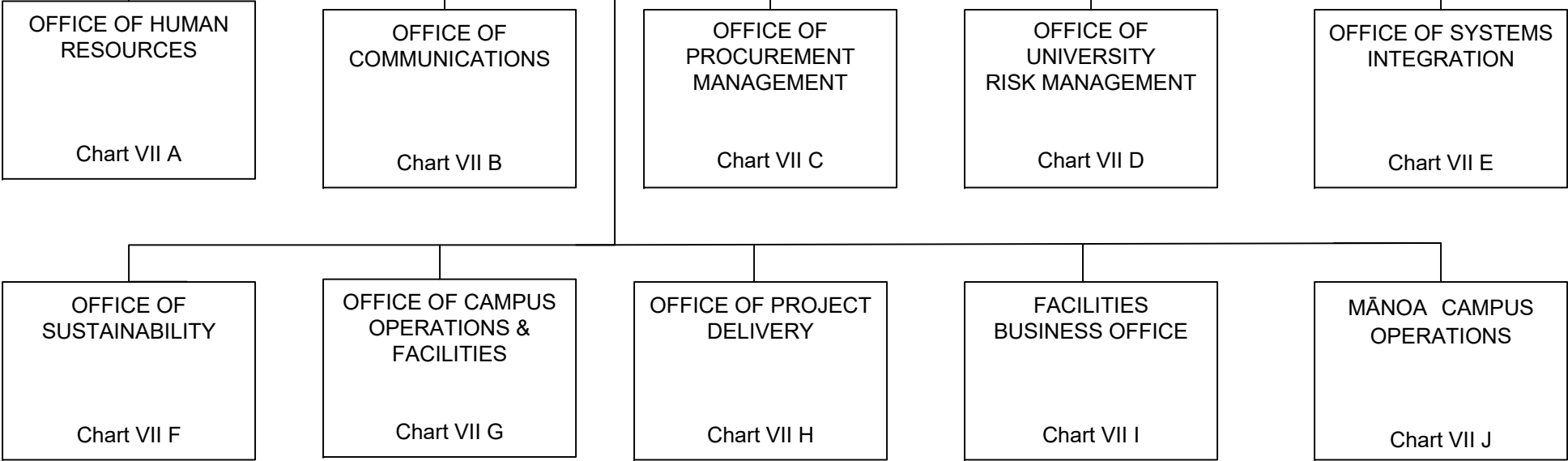
President, University of Hawai'i System 89058¹

STATE OF HAWAI'I
 UNIVERSITY OF HAWAI'I
 SYSTEMWIDE ADMINISTRATION
 VICE PRESIDENT FOR ADMINISTRATION

POSITION ORGANIZATION CHART

CHART VII

OFFICE OF THE VICE PRESIDENT FOR ADMINISTRATION			
Vice President for Administration			89446
Associate Vice President for Administration			89103
Project Manager	PBB		80789*
Institutional/Policy Analyst	PBB		77074
Institutional/Policy Analyst	PBB		81056
Administrative Officer	PBB		81367
Proc/Prop Mgt Sp	PBB		80429(W)
Director of Planning & Project Development			89153*



¹ Excluded from position count

* Positions appropriated to Manoa, reflected organizationally on this chart

	<u>Perm</u>
General Fund	5.00 (SW)
General Fund	2.00 (MA)*
Revolving Fund (W)	1.00 (SW)

STATE OF HAWAI'I
 UNIVERSITY OF HAWAI'I
 SYSTEMWIDE ADMINISTRATION
 VICE PRESIDENT FOR ADMINISTRATION
 OFFICE OF HUMAN RESOURCES
 POSITION ORGANIZATION CHART

CHART VII A

OFFICE OF THE VICE PRESIDENT FOR ADMINISTRATION		
Vice President for Administration		89446 ¹

OFFICE OF HUMAN RESOURCES		
System Director of Human Resources		89310
Associate Director of Human Resources		89425
Human Resources Specialist	PBB	77834
Admin & Fiscal Support Sp	PBA	80093

EMPLOYEE SERVICES

COLLECTIVE BARGAINING AND EMPLOYEE RELATIONS		
Director of Collective Bargaining and Employee Relations		89173
Human Resources Specialist	PBB	79848

UNIT A		
HR Manager	PBC	80092
HR Specialist	PBB	78386
HR Specialist	PBB	80538
HR Specialist	PBB	80384
HR Specialist	PBB	80986
HR Specialist	PBB	81753

UNIT B		
HR Manager	PBC	78393
HR Specialist	PBB	81200
HR Specialist	PBA	78683
HR Specialist	PBB	80179
HR Specialist	PBB	81834
HR Assistant V	SR-13	12260

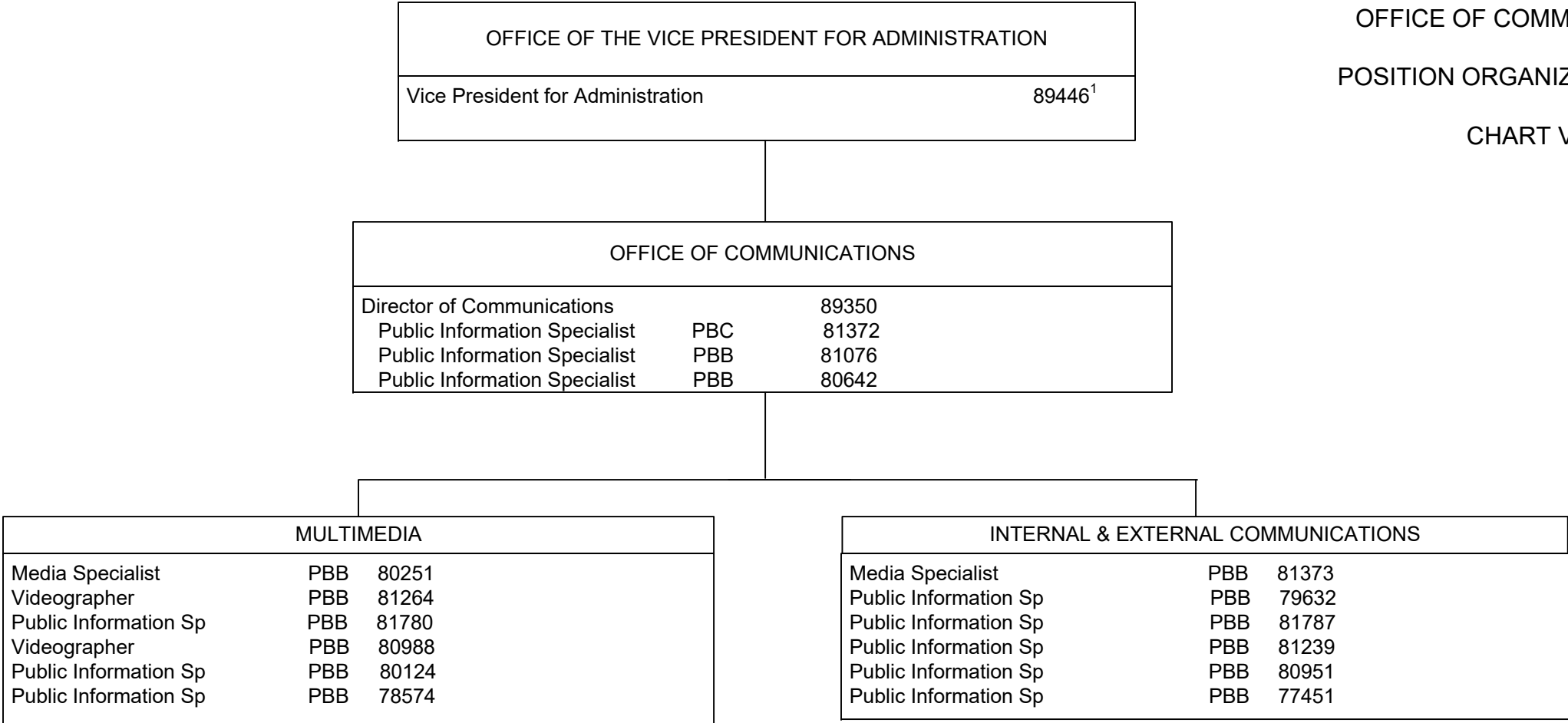
POLICIES & PROCEDURES & CLASSIFICATION		
HR Manager	PBC	80540

Perm
 General Fund 19.00 (SW)

¹ Excluded from position count

STATE OF HAWAI'I
 UNIVERSITY OF HAWAI'I
 SYSTEMWIDE ADMINISTRATION
 VICE PRESIDENT FOR ADMINISTRATION
 OFFICE OF COMMUNICATIONS

POSITION ORGANIZATION CHART
 CHART VII B



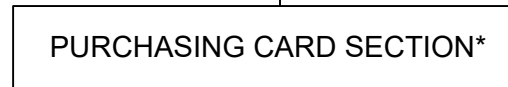
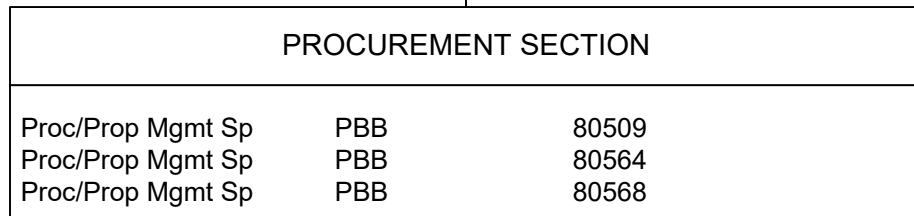
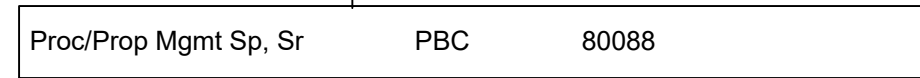
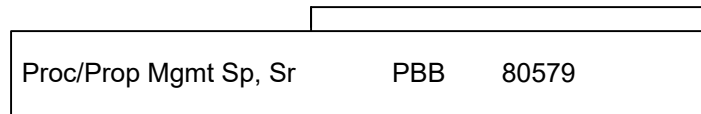
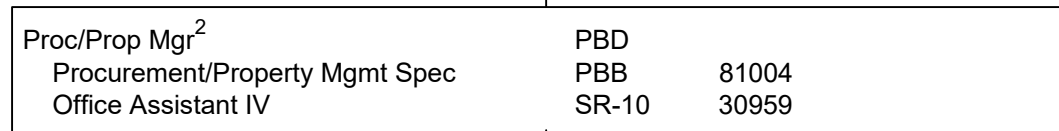
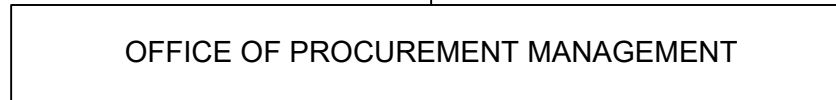
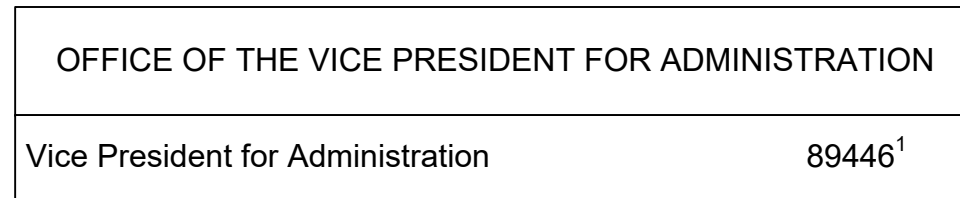
¹ Excluded from position count

General Fund Perm 16.00

STATE OF HAWAI'I
 UNIVERSITY OF HAWAI'I
 SYSTEMWIDE ADMINISTRATION
 VICE PRESIDENT FOR ADMINISTRATION
 OFFICE OF PROCUREMENT
 MANAGEMENT

POSITION ORGANIZATION CHART

CHART VII C



¹ Excluded from position count

² Position was abolished per Act 9, SLH 2020, SB126 CD1

³ Appropriated per HB1600, H.D.1, S.D.2, C.D.1 but not established, Procurement Director 93910F

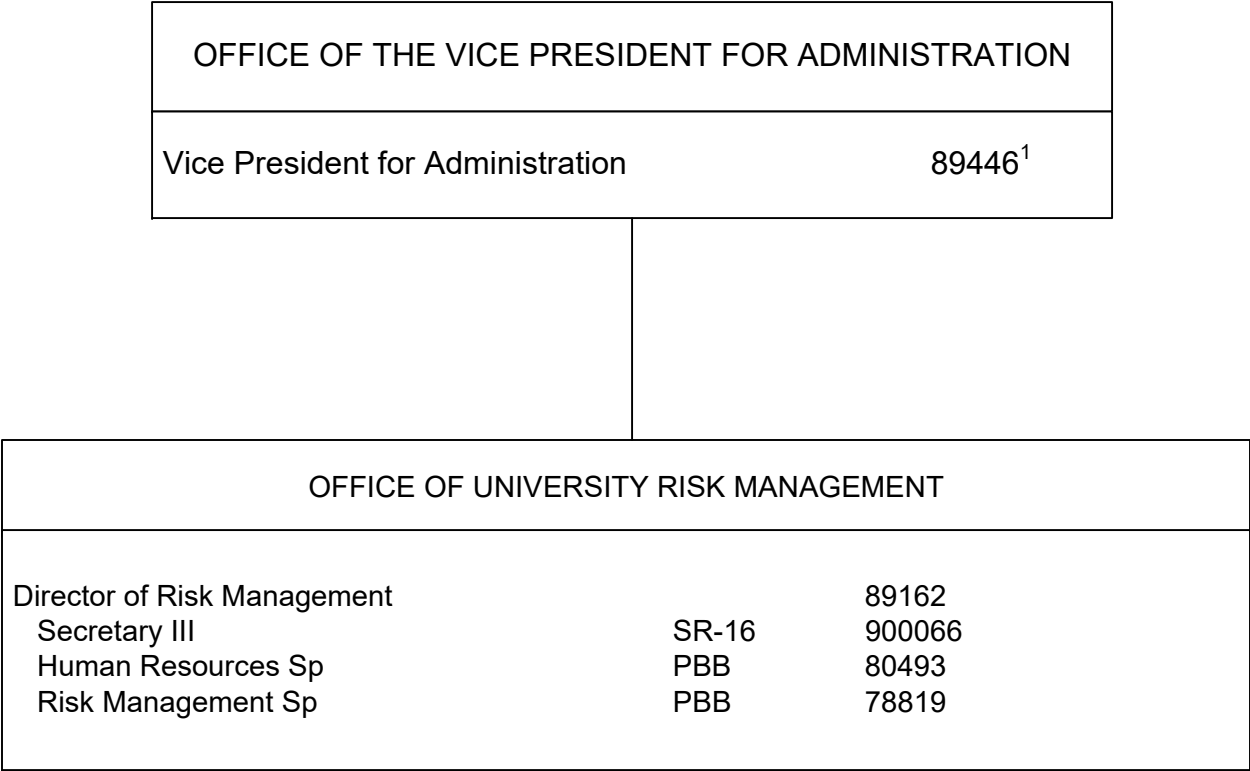
* Includes temporary positions

General Fund Perm 8.00³

STATE OF HAWAII
 UNIVERSITY OF HAWAII
 SYSTEMWIDE ADMINISTRATION
 VICE PRESIDENT FOR ADMINISTRATION
 OFFICE OF UNIVERSITY RISK
 MANAGEMENT

POSITION ORGANIZATION CHART

CHART VII D



¹ Excluded from position count

STATE OF HAWAII
 UNIVERSITY OF HAWAII
 SYSTEMWIDE ADMINISTRATION
 VICE PRESIDENT FOR ADMINISTRATION
 OFFICE OF SYSTEMS INTEGRATION

POSITION ORGANIZATION CHART

CHART VII E

OFFICE OF THE VICE PRESIDENT FOR ADMINISTRATION		
Vice President for Administration		89446 ¹

OFFICE OF SYSTEMS INTEGRATION		
Director Systems Integration	PBC	80143
Website Specialist	PBB	77959

Business Process Transformation		
IT Manager	PBB	80327*
Database Administrator	PBB	79886*
System Administrator	PBB	77784 (B)
Network Specialist	PBA	80535*
Institutional Analyst	PBB	80392
Project Manager	PBB	77439*

PeopleSoft Development and Support		
IT Manager	PBB	80094
HR Specialist	PBB	78587

Technology Integration		
IT Manager	PBB	77028
HR Specialist	PBB	81322
IT Specialist	PBB	80394
System Administrator	PBB	77327
IT Specialist	PBB	81235
System Administrator	PBB	78418*

¹ Excluded from position count

* Positions appropriated to Manoa, reflected organizationally on this chart

	<u>Perm</u>
General Fund	10.00 (SW)
General Fund	5.00 (MA)*
Special Fund (B)	1.00 (SW)

OFFICE OF THE VICE PRESIDENT FOR ADMINISTRATION		
Vice President for Administration		89446 ¹

OFFICE OF SUSTAINABILITY		
Director of Energy Management		89524
Operations Coordinator	PBB	78394
Operations Coordinator	PBA	80991

STATE OF HAWAII
 UNIVERSITY OF HAWAII
 SYSTEMWIDE ADMINISTRATION
 VICE PRESIDENT FOR ADMINISTRATION
 OFFICE OF SUSTAINABILITY

POSITION ORGANIZATION CHART

CHART VII F

¹ Excluded from position count

General Fund Perm 3.00

STATE OF HAWAI'I
 UNIVERSITY OF HAWAI'I
 SYSTEMWIDE ADMINISTRATION
 VICE PRESIDENT FOR ADMINISTRATION
 OFFICE OF CAMPUS OPERATIONS & FACILITIES

POSITION ORGANIZATION CHART

CHART VII G

OFFICE OF THE VICE PRESIDENT FOR ADMINISTRATION
 Vice President for Administration 89446¹

OFFICE OF CAMPUS OPERATIONS & FACILITIES

Director	PBD	78777
Auxil & Fac Svcs Mgr	PBC	81250
Auxil & Fac Svcs Mgr	PBC	81505
Auxil & Fac Svcs Mgr	PBB	79535
Auxil & Fac Svcs Mgr	PBB	81818
Registered Architect	PBB	80790
Architect	PBB	80558

FACILITIES SAFETY

Environ & Hlth Sfty Sp	PBB	78121
------------------------	-----	-------

WAREHOUSE/INVENTORY

Auxil & Fac Svc Off	PBB	81774
Auxil & Fac Svc Off	PBA	80601
Warehouse Worker	BC04	901002

FIRE SAFETY

Environ & Hlth Sfty Sp	PBC	80325
Environ & Hlth Sfty Sp	PBB	#77466, #81796

WORK COORDINATION CENTER

Auxil & Fac Svcs Off	PBB	80487
Auxil & Fac Svcs Off	PBB	78973
Auxil & Fac Svcs Off	PBA	77986
Auxil & Fac Svcs Off	PBA	78974

PROFESSIONAL SUPPORT

Mechanical Engineer	PBC	81053
Secretary II	SR-14	43782
Mechanical Engineer	PBB	80532
Mechanical Engineer	PBB	81482
Engineer	PBB	79557
Mechanical Engineer	PBA	79399
Auxil & Fac Svcs Off	PBB	81453
Registered Engineer	PBC	81097
Registered Engineer	PBB	77675
Engineer	PBB	80441
Engineer	PBB	78915

BUILDINGS AND GROUNDS
 MANAGEMENT
 CHART VII G1

SHOPS
 CHART VII G2

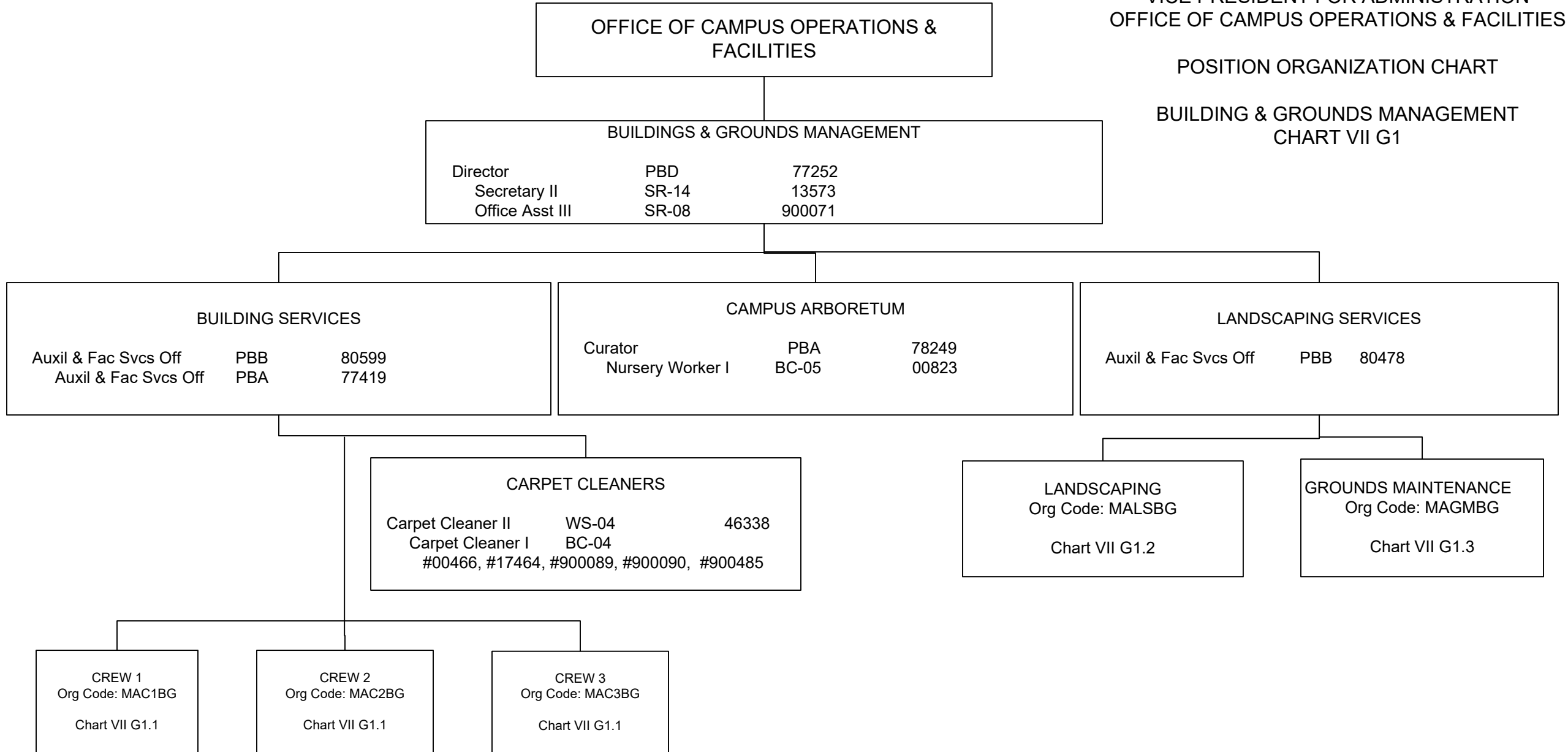
¹ Excluded from position count

* All positions on Chart VII G appropriated to Manoa, reflected organizationally on this chart

STATE OF HAWAI'I
 UNIVERSITY OF HAWAI'I
 SYSTEMWIDE ADMINISTRATION
 VICE PRESIDENT FOR ADMINISTRATION
 OFFICE OF CAMPUS OPERATIONS & FACILITIES

POSITION ORGANIZATION CHART

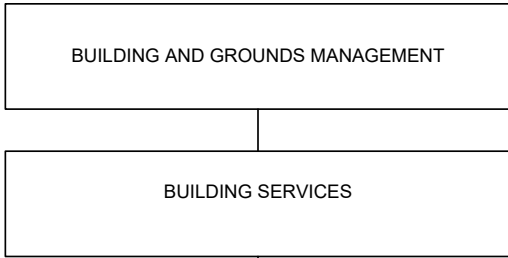
BUILDING & GROUNDS MANAGEMENT
 CHART VII G1



¹ Excluded from position count

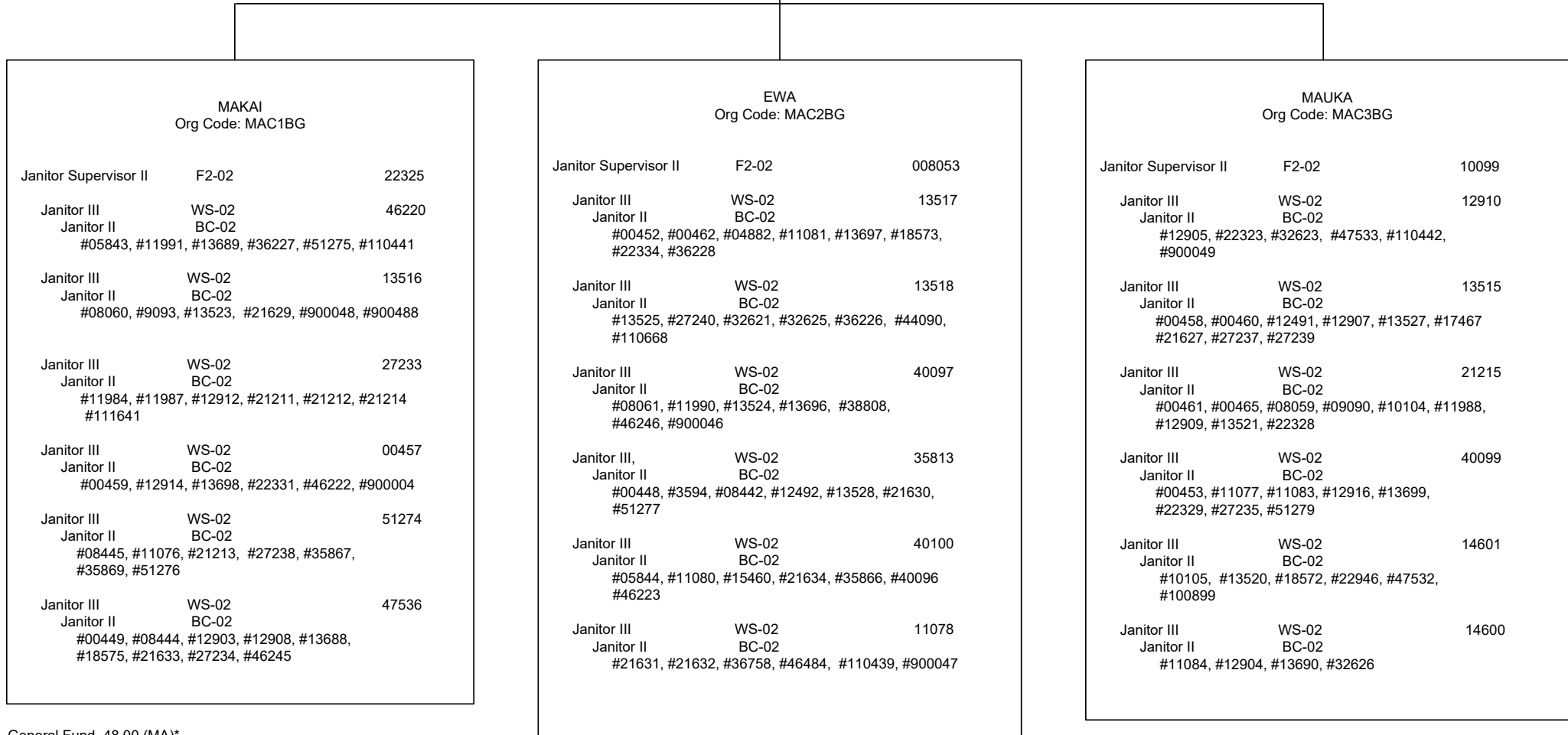
* All positions on Chart VII G1 appropriated to Manoa, reflected organizationally on this chart

STATE OF HAWAI'I
 UNIVERSITY OF HAWAI'I
 SYSTEMWIDE ADMINISTRATION
 VICE PRESIDENT FOR ADMINISTRATION
 OFFICE OF CAMPUS OPERATIONS & FACILITIES
 BUILDING AND GROUNDS MANAGEMENT



POSITION ORGANIZATION CHART

BUILDING SERVICES
 CHART VII G1.1



MAKAI Org Code: MAC1BG		
Janitor Supervisor II	F2-02	22325
Janitor III	WS-02	46220
Janitor II	BC-02	#05843, #11991, #13689, #36227, #51275, #110441
Janitor III	WS-02	13516
Janitor II	BC-02	#08060, #9093, #13523, #21629, #900048, #900488
Janitor III	WS-02	27233
Janitor II	BC-02	#11984, #11987, #12912, #21211, #21212, #21214, #111641
Janitor III	WS-02	00457
Janitor II	BC-02	#00459, #12914, #13698, #22331, #46222, #900004
Janitor III	WS-02	51274
Janitor II	BC-02	#08445, #11076, #21213, #27238, #35867, #35869, #51276
Janitor III	WS-02	47536
Janitor II	BC-02	#00449, #08444, #12903, #12908, #13688, #18575, #21633, #27234, #46245

General Fund 48.00 (MA)*

EWA Org Code: MAC2BG		
Janitor Supervisor II	F2-02	008053
Janitor III	WS-02	13517
Janitor II	BC-02	#00452, #00462, #04882, #11081, #13697, #18573, #22334, #36228
Janitor III	WS-02	13518
Janitor II	BC-02	#13525, #27240, #32621, #32625, #36226, #44090, #110668
Janitor III	WS-02	40097
Janitor II	BC-02	#08061, #11990, #13524, #13696, #38808, #46246, #900046
Janitor III,	WS-02	35813
Janitor II	BC-02	#00448, #3594, #08442, #12492, #13528, #21630, #51277
Janitor III	WS-02	40100
Janitor II	BC-02	#05844, #11080, #15460, #21634, #35866, #40096, #46223
Janitor III	WS-02	11078
Janitor II	BC-02	#21631, #21632, #36758, #46484, #110439, #900047

General Fund 49.00 (MA)*

MAUKA Org Code: MAC3BG		
Janitor Supervisor II	F2-02	10099
Janitor III	WS-02	12910
Janitor II	BC-02	#12905, #22323, #32623, #47533, #110442, #900049
Janitor III	WS-02	13515
Janitor II	BC-02	#00458, #00460, #12491, #12907, #13527, #17467, #21627, #27237, #27239
Janitor III	WS-02	21215
Janitor II	BC-02	#00461, #00465, #08059, #09090, #10104, #11988, #12909, #13521, #22328
Janitor III	WS-02	40099
Janitor II	BC-02	#00453, #11077, #11083, #12916, #13699, #22329, #27235, #51279
Janitor III	WS-02	14601
Janitor II	BC-02	#10105, #13520, #18572, #22946, #47532, #100899
Janitor III	WS-02	14600
Janitor II	BC-02	#11084, #12904, #13690, #32626

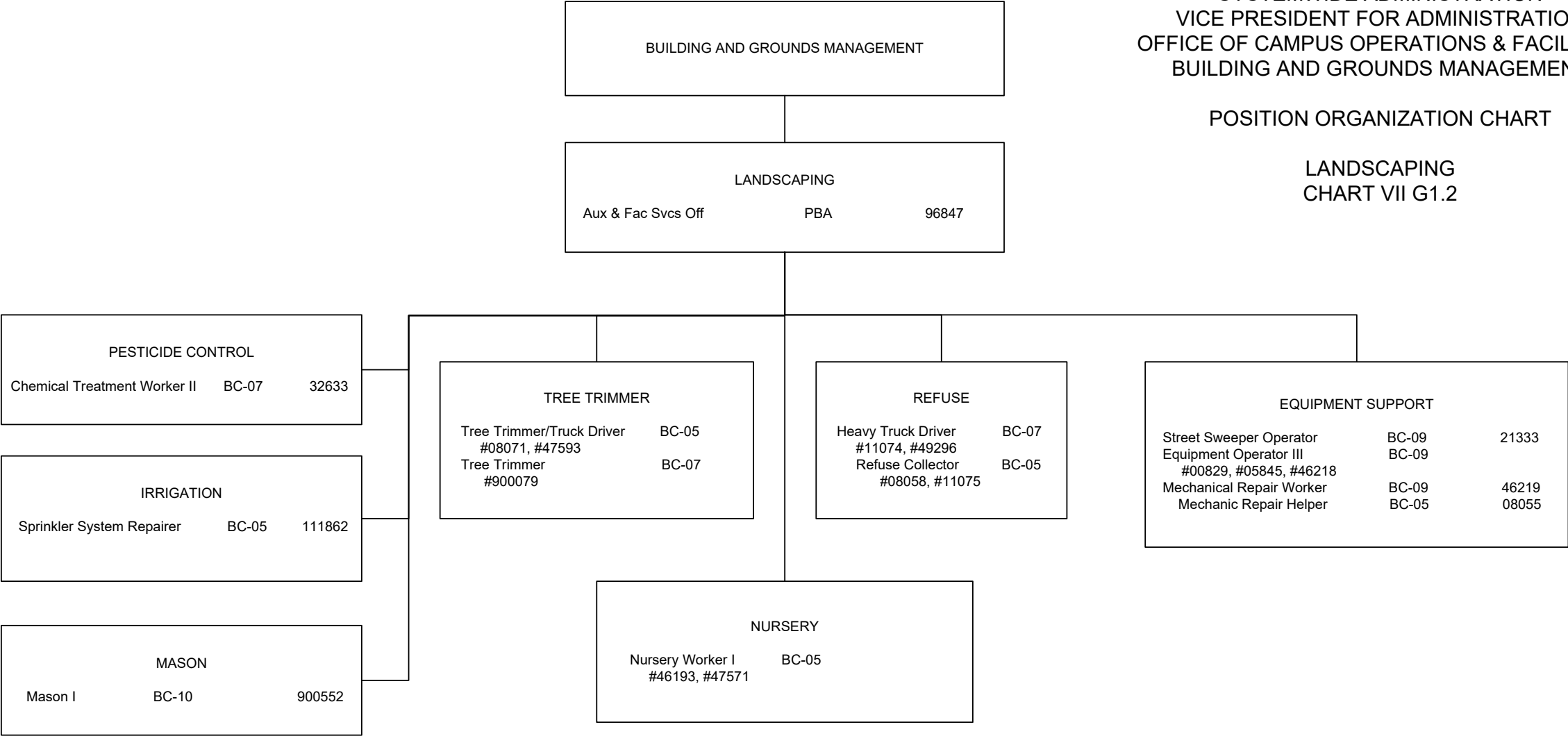
General Fund 49.00 (MA)*

* All positions on Chart VII G1.1 appropriated to Manoa, reflected organizationally on this chart

STATE OF HAWAI'I
 UNIVERSITY OF HAWAI'I
 SYSTEMWIDE ADMINISTRATION
 VICE PRESIDENT FOR ADMINISTRATION
 OFFICE OF CAMPUS OPERATIONS & FACILITIES
 BUILDING AND GROUNDS MANAGEMENT

POSITION ORGANIZATION CHART

LANDSCAPING
 CHART VII G1.2



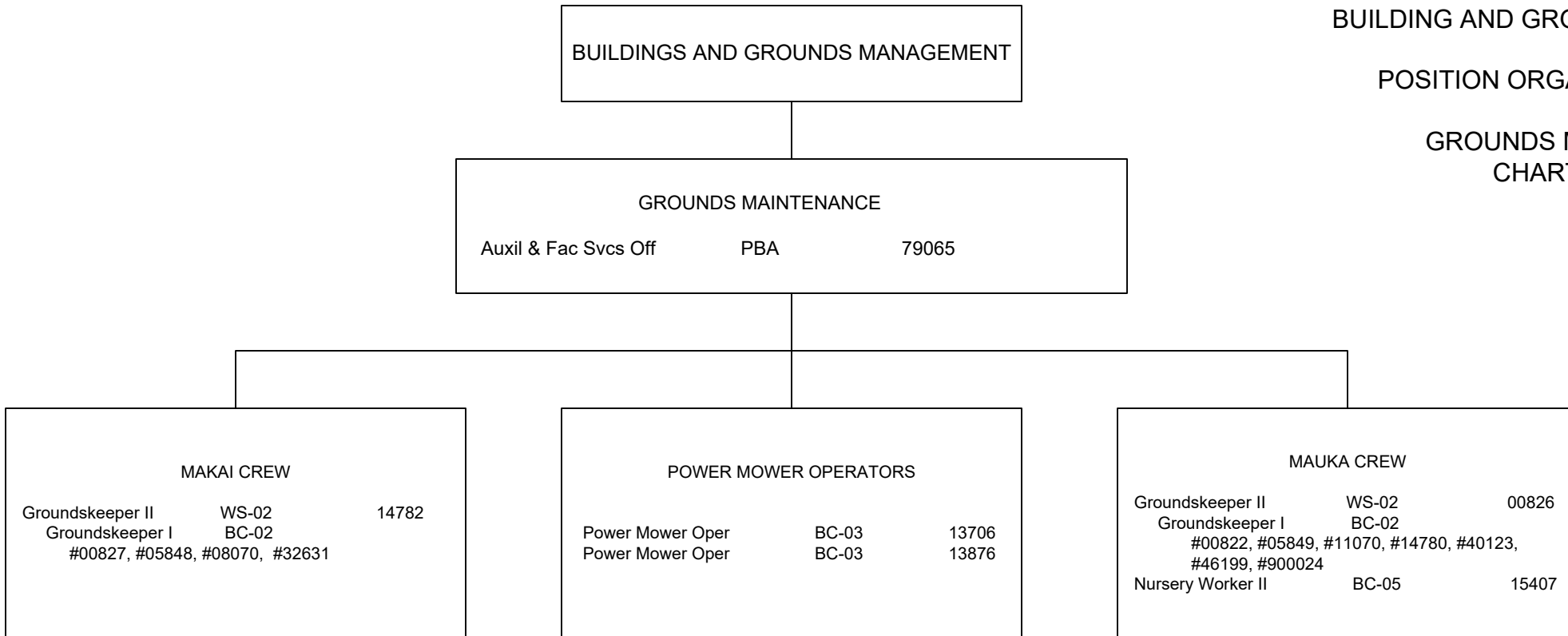
General Fund Perm 19.00 (MA)*

* All positions on Chart VII G1.2 appropriated to Manoa, reflected organizationally on this chart

STATE OF HAWAI'I
 UNIVERSITY OF HAWAI'I
 SYSTEMWIDE ADMINISTRATION
 VICE PRESIDENT FOR ADMINISTRATION
 OFFICE OF CAMPUS OPERATIONS & FACILITIES
 BUILDING AND GROUNDS MANAGEMENT

POSITION ORGANIZATION CHART

GROUNDS MAINTENANCE
 CHART VII G1.3



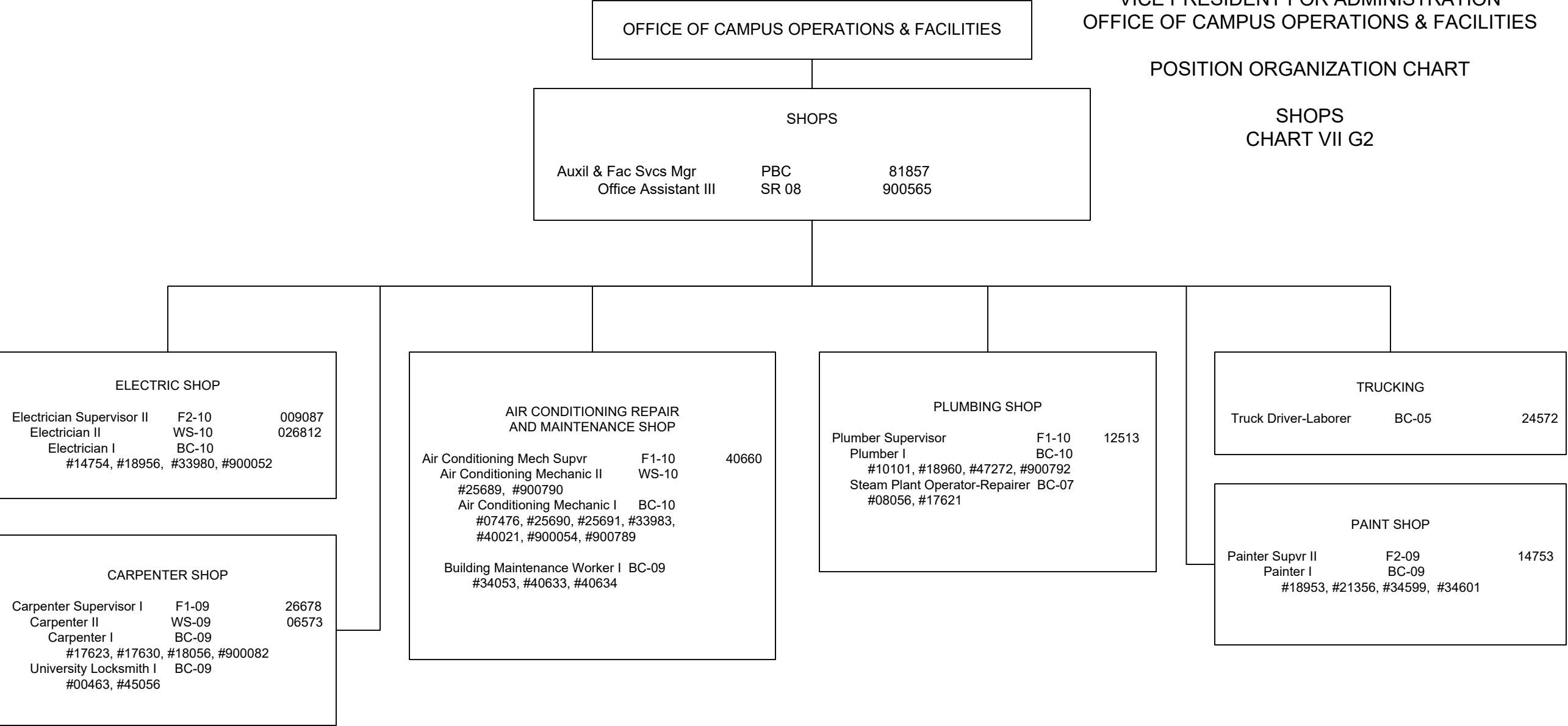
* All positions on Chart VII G1.3 appropriated to Manoa, reflected organizationally on this chart

General Fund Perm 17.00 (MA)*

STATE OF HAWAI'I
 UNIVERSITY OF HAWAI'I
 SYSTEMWIDE ADMINISTRATION
 VICE PRESIDENT FOR ADMINISTRATION
 OFFICE OF CAMPUS OPERATIONS & FACILITIES

POSITION ORGANIZATION CHART

SHOPS
 CHART VII G2



* All positions on Chart VII G2 appropriated to Manoa, reflected organizationally on this chart

Perm
 General Fund 42.00 (MA)*

STATE OF HAWAI'I
 UNIVERSITY OF HAWAI'I
 SYSTEMWIDE ADMINISTRATION
 VICE PRESIDENT FOR ADMINISTRATION
 OFFICE OF PROJECT DELIVERY

POSITION ORGANIZATION CHART

CHART VII H

OFFICE OF THE VICE PRESIDENT FOR ADMINISTRATION		
Vice President for Administration		89446 ¹

OFFICE OF PROJECT DELIVERY		
Director		89233
Project Manager	PBB	77270*

PROJECT MANAGEMENT		
Project Manager	PBC	79778*
Project Manager	PBB	77224*
Project Manager	PBB	77992*
Project Manager	PBB	78552*
Registered Architect	PBB	78887*
Registered Architect	PBB	79490*
Registered Architect	PBB	80788*
Registered Architect	PBB	77235
Architecture Production Sp	PBB	77308*
Project Manager	PBB	80338*
Admin & Fiscal Support Sp	PBA	80383*

CONSTRUCTION MANAGEMENT		
Construction Manager	PBC	78691
Construction Manager	PBB	79011
Construction Inspector	PBB	78975*
Construction Manager	PBB	81050*
Operations Coordinator	PBB	79261*
Construction Manager	PBB	81995*
Construction Manager	PBB	81138*
Architect	PBB	81897*
Construction Inspector	PBB	77086
Construction Manager	PBB	81209*
Construction Inspector	PBB	78752*

¹ Excluded from position count

² Appropriated but not established, 8 Special Fund (B) positions: 93926F – 93933F

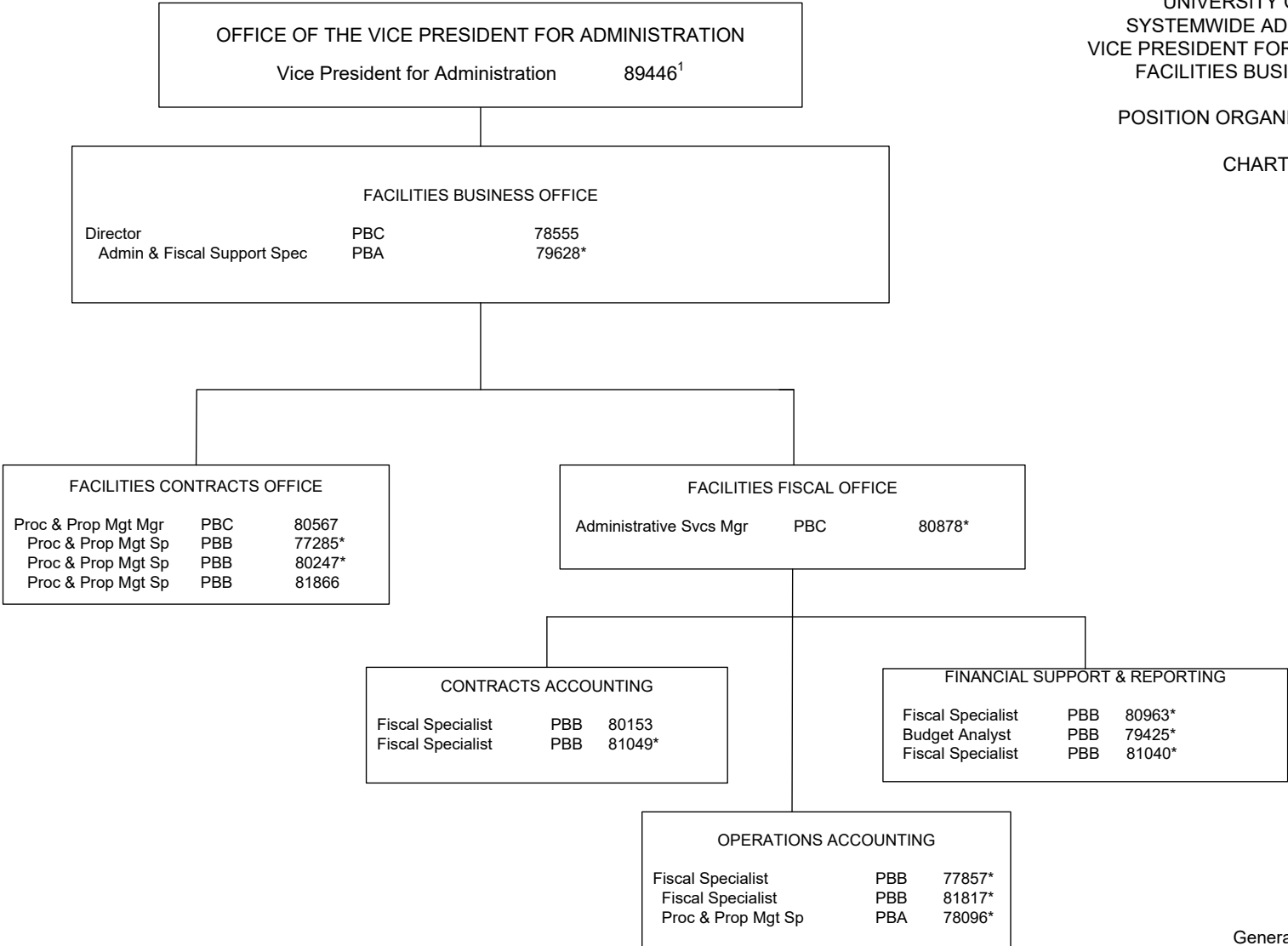
* Positions appropriated to Manoa, reflected organizationally on this chart

	<u>Perm</u>
General Fund	5.00 (SW)
General Fund	19.00 (MA)*
Special Fund (B)	8.00 (SW) ²

STATE OF HAWAI'I
 UNIVERSITY OF HAWAI'I
 SYSTEMWIDE ADMINISTRATION
 VICE PRESIDENT FOR ADMINISTRATION
 FACILITIES BUSINESS OFFICE

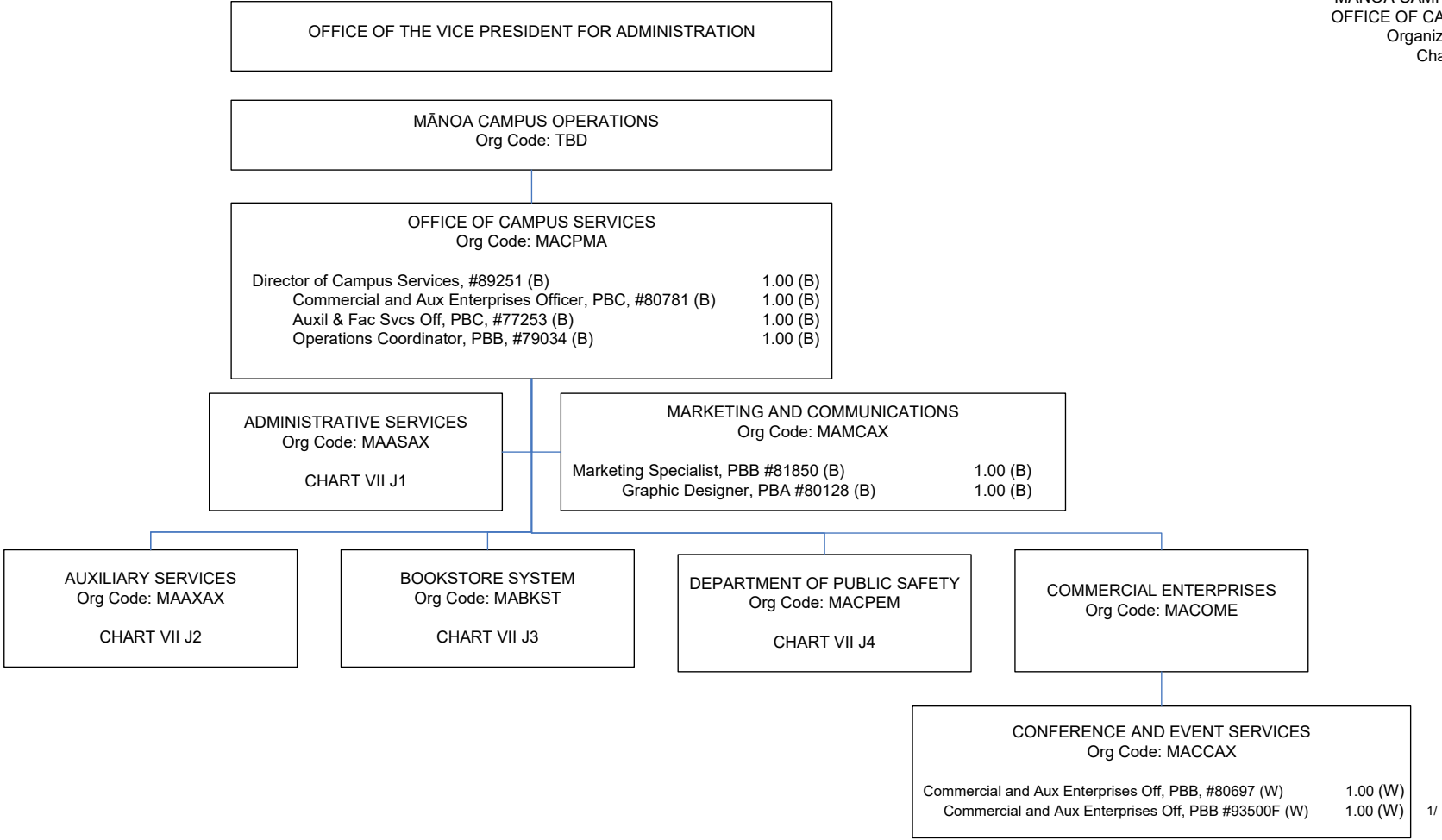
POSITION ORGANIZATION CHART

CHART VII I



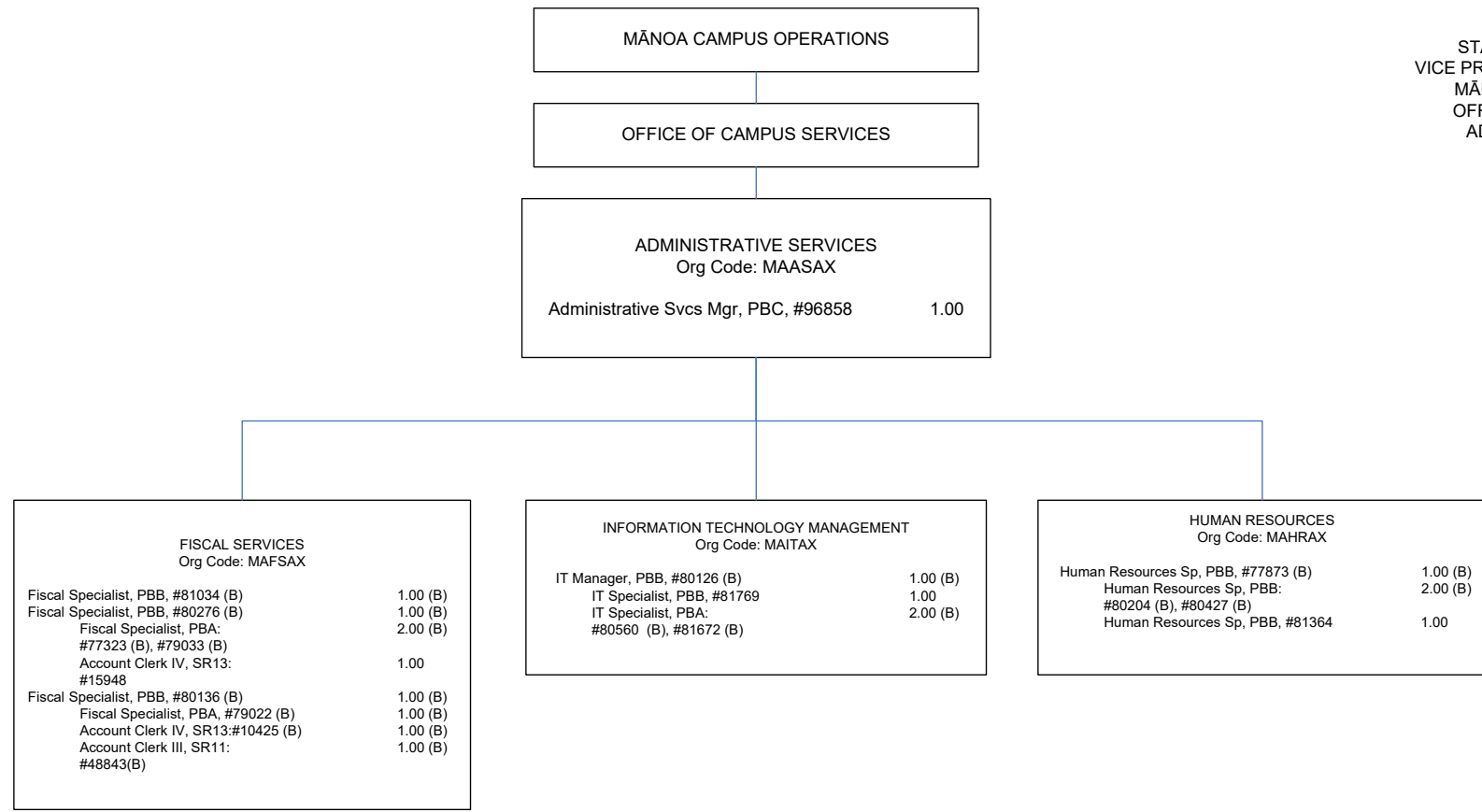
Perm
 General Fund 4.00 (SW)
 General Fund 11.00 (MA)*

¹ Excluded from position count
 * Positions appropriated to Manoa, reflected organizationally on this chart



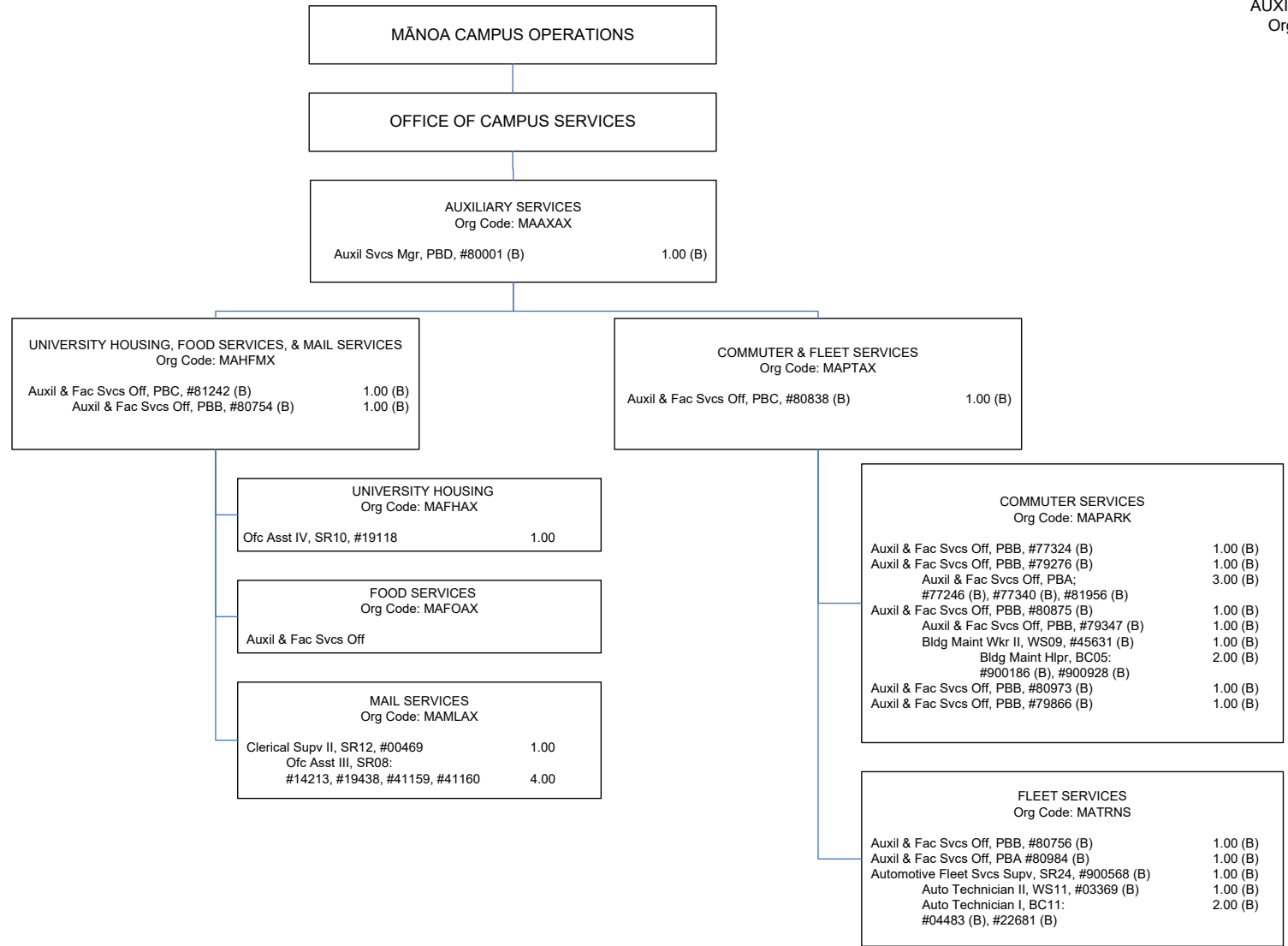
1/ To be established
 (B) Special fund position abolished but retained count: #13644

CHART TOTAL:	PERM	TEMP
Special Funds (B):	7.00	-- (MA)
Revolving Funds (W):	2.00	-- (MA)



(B) Special fund positions abolished but retained position count: #14867, #14988, #900127, #900596, #17431 #80395(B) to be reallocated

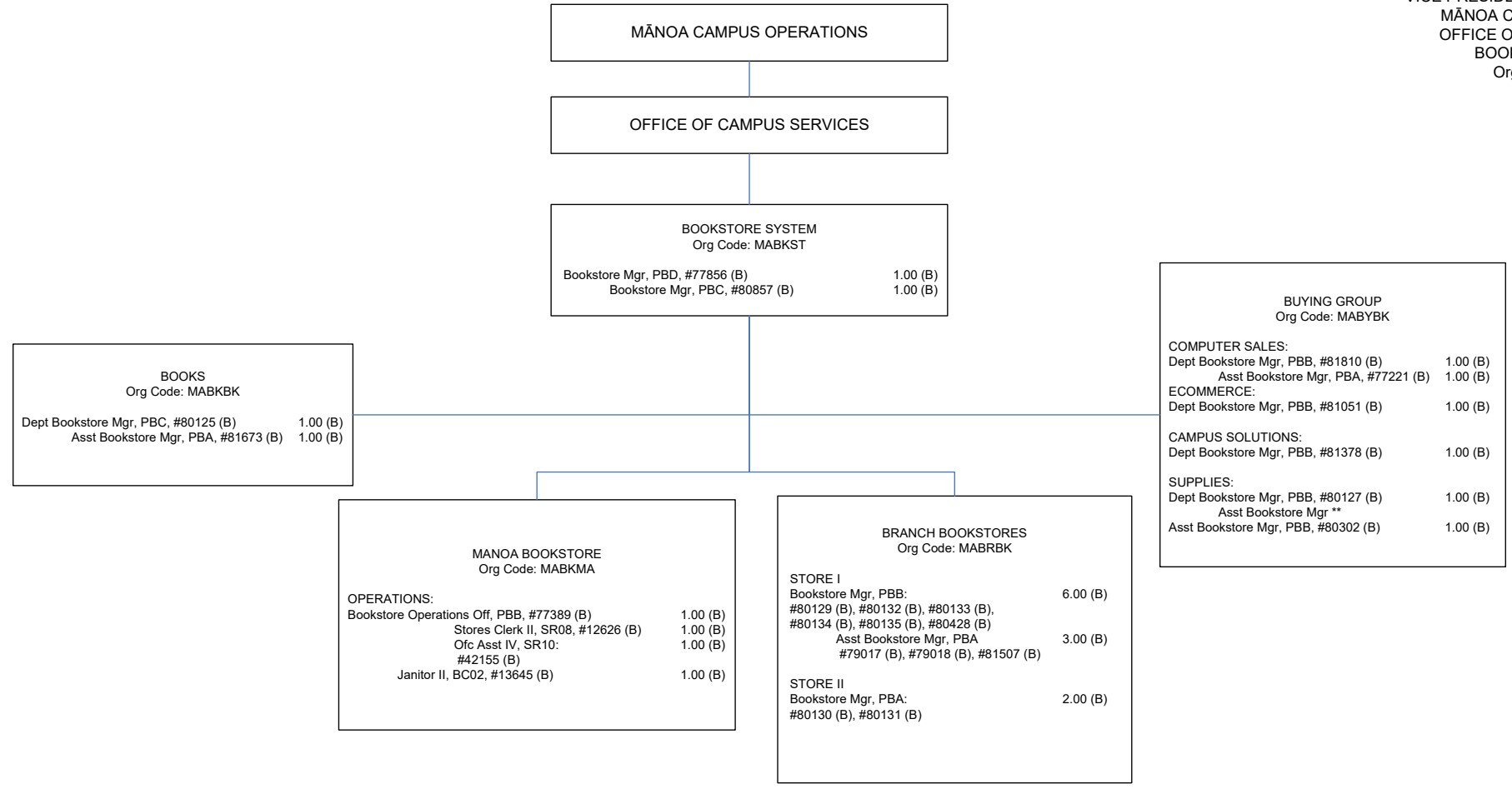
CHART TOTAL:	PERM	TEMP
General Funds:	4.00	-- (MA)
Special Funds (B):	20.00	-- (MA)



(A) General fund position abolished but retained count: #41161
 (B) Special fund position abolished but retained count: #43011

CHART TOTAL:	PERM	TEMP
General Funds:	7.00	-- (MA)
Special Funds (B):	23.00	-- (MA)

STATE OF HAWAII
 UNIVERSITY OF HAWAII
 STATEWIDE ADMINISTRATION
 VICE PRESIDENT FOR ADMINISTRATION
 MĀNOA CAMPUS OPERATIONS
 OFFICE OF CAMPUS SERVICES
 BOOKSTORE SYSTEM
 Organization Chart
 Chart VII J3



(B) Special fund positions abolished but retained count: #06801, #12627, #13642, #13643, #13944, #13945, #15057, #15538, #17356, #17357, #17358, #17360, #17361, #17362, #17651, #18089, #19065, #19066, #22931, #23809, #24637, #24959, #26727, #27843, #27876, #27887, #32675, #35138, #47164, #94356F, #15539, #17359, #23808, #42016, #42156, #42745, #42746

**Represents a supervisory layer that exists but is deleted due to legislative abolishment

CHART TOTAL:	PERM	TEMP
General Funds:	0.00	-- (MA)
Special Funds (B):	62.00	-- (MA)

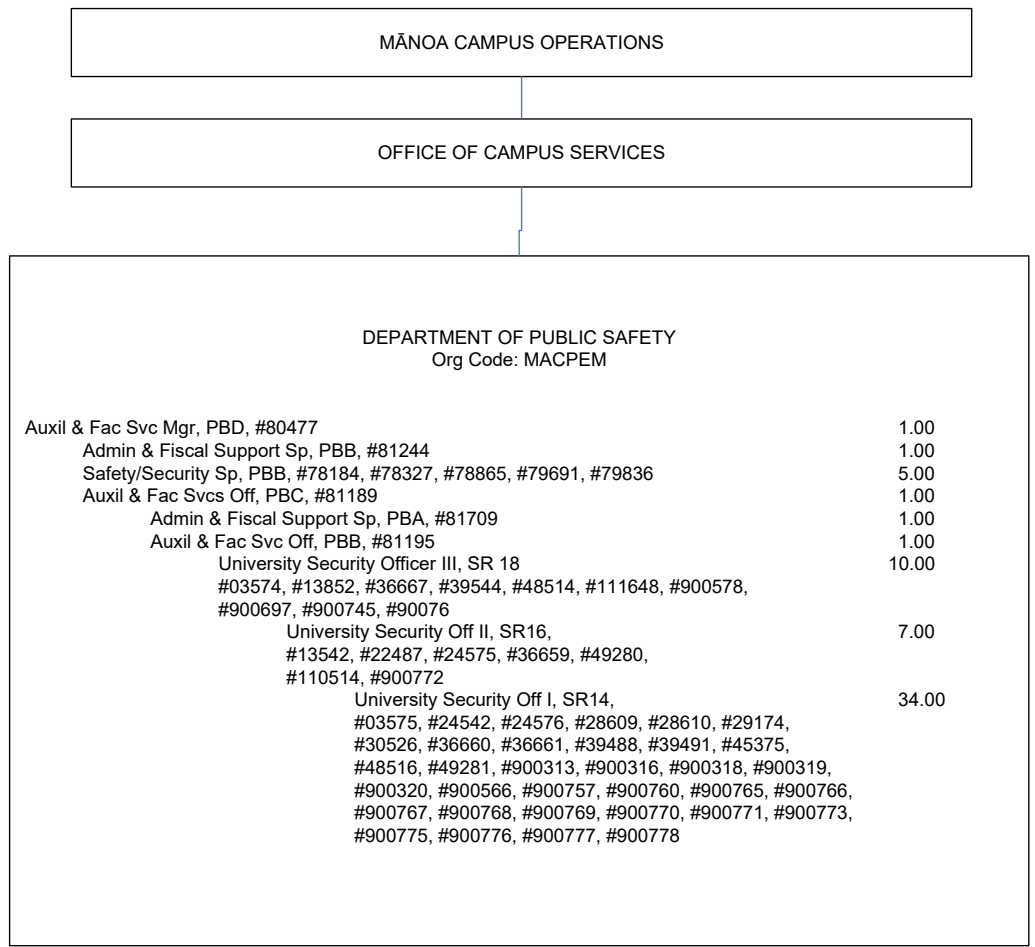


CHART TOTAL: **PERM** **TEMP**
 General Funds: 61.00 -- (MA)