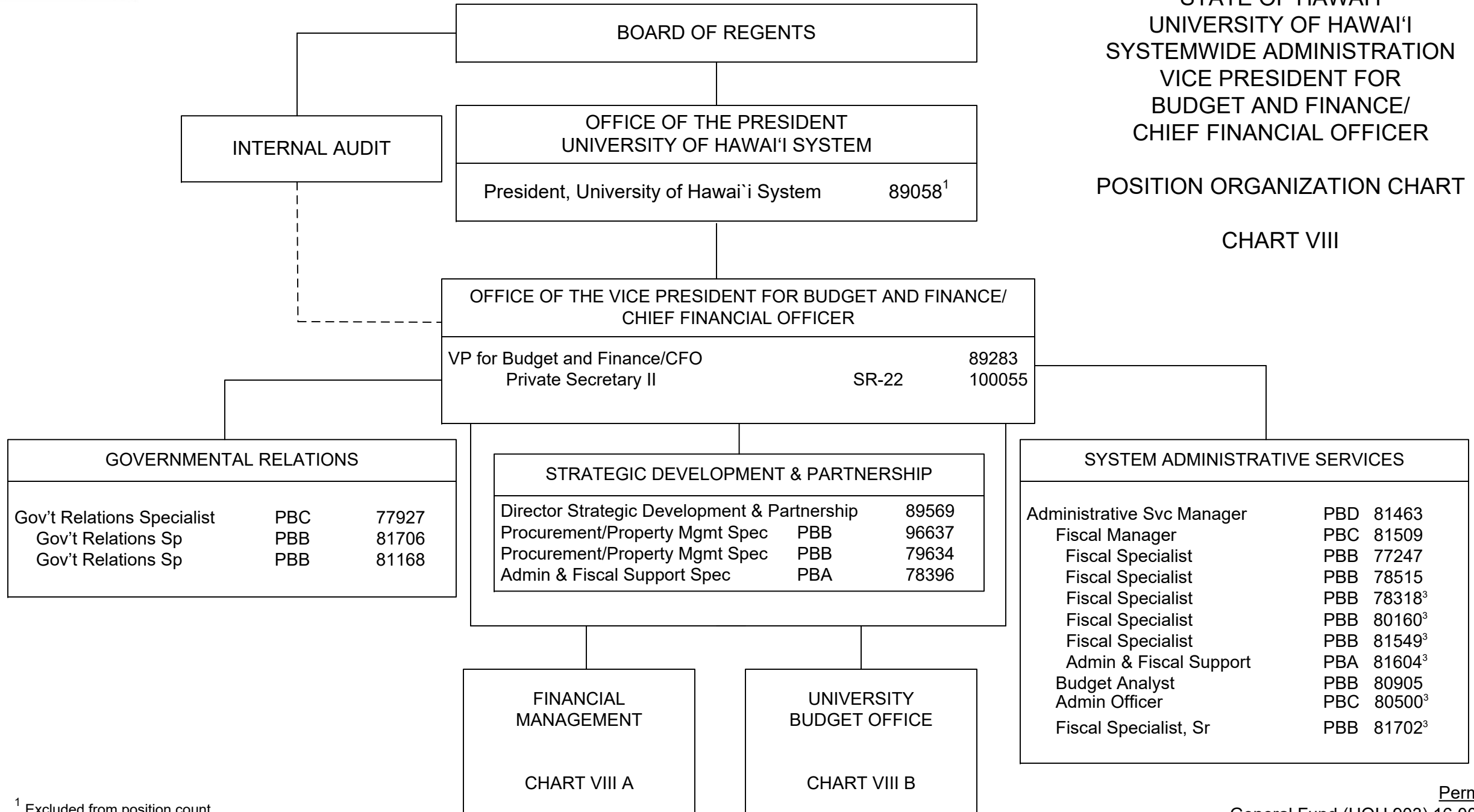


STATE OF HAWAI'I
 UNIVERSITY OF HAWAI'I
 SYSTEMWIDE ADMINISTRATION
 VICE PRESIDENT FOR
 BUDGET AND FINANCE/
 CHIEF FINANCIAL OFFICER
 POSITION ORGANIZATION CHART

CHART VIII



¹ Excluded from position count

² Appropriated but not established, 2 General Fund positions: 90901F, 90902F

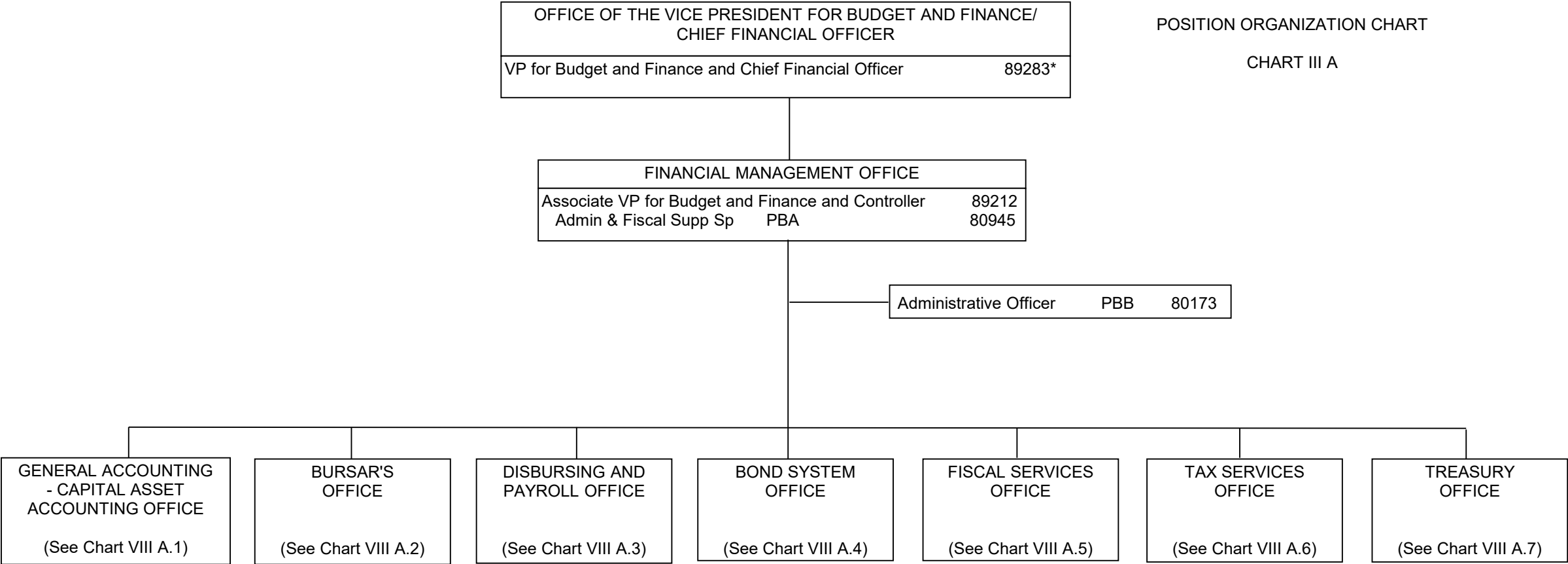
³ Part of UOH 901 appropriation, reflected organizationally on this chart

Perm
 General Fund (UOH 903) 16.00²
 General Fund (UOH 901) 6.00³

STATE OF HAWAII
 UNIVERSITY OF HAWAII
 SYSTEMWIDE ADMINISTRATION
 VICE PRESIDENT FOR
 BUDGET AND FINANCE/
 CHIEF FINANCIAL OFFICER
 FINANCIAL MANAGEMENT OFFICE

POSITION ORGANIZATION CHART

CHART III A



* Excluded from position count, this page

STATE OF HAWAII
 UNIVERSITY OF HAWAII
 SYSTEMWIDE ADMINISTRATION
 VICE PRESIDENT FOR
 BUDGET AND FINANCE/
 CHIEF FINANCIAL OFFICER
 FINANCIAL MANAGEMENT OFFICE
 GENERAL ACCOUNTING -
 CAPITAL ASSET ACCOUNTING
 OFFICE

POSITION ORGANIZATION CHART

CHART VIII A.1

FINANCIAL MANAGEMENT OFFICE		
Associate VP for Budget and Finance and Controller		89212*

GENERAL ACCOUNTING - CAPITAL ASSET ACCOUNTING OFFICE		
Accounting Manager	PBD	81409

CASH MANAGEMENT		
Accountant	PBB	80346

FINANCIAL REPORTING AND ANALYSIS		
Accountant	PBB	78554
Accountant	PBB	81370

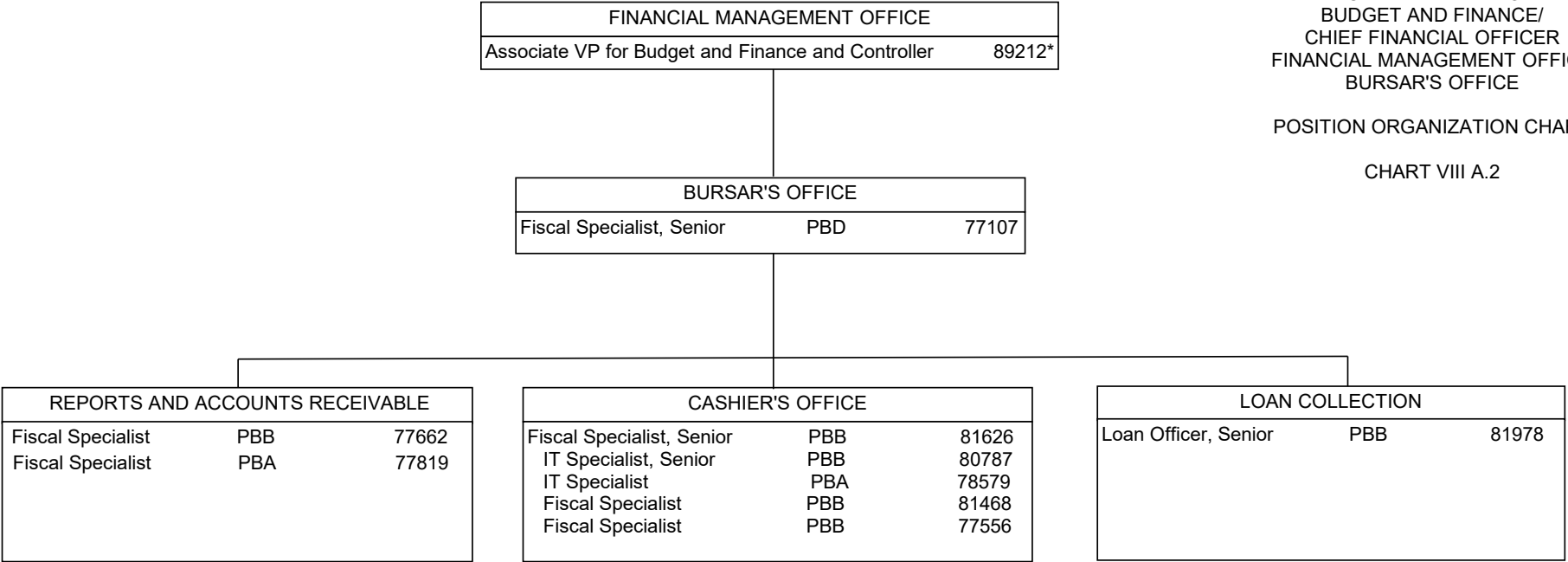
GENERAL ACCOUNTING OPERATIONS		
Fiscal Specialist, Senior	PBC	78557
Accountant	PBB	80549
Accountant	PBB	81768

CAPITAL ASSET ACCOUNTING		
Accountant	PBB	81258
Proc/Prop Mgt Sp	PBA	80459

* Excluded from position count, this page

STATE OF HAWAII
 UNIVERSITY OF HAWAII
 SYSTEMWIDE ADMINISTRATION
 VICE PRESIDENT FOR
 BUDGET AND FINANCE/
 CHIEF FINANCIAL OFFICER
 FINANCIAL MANAGEMENT OFFICE
 BURSAR'S OFFICE

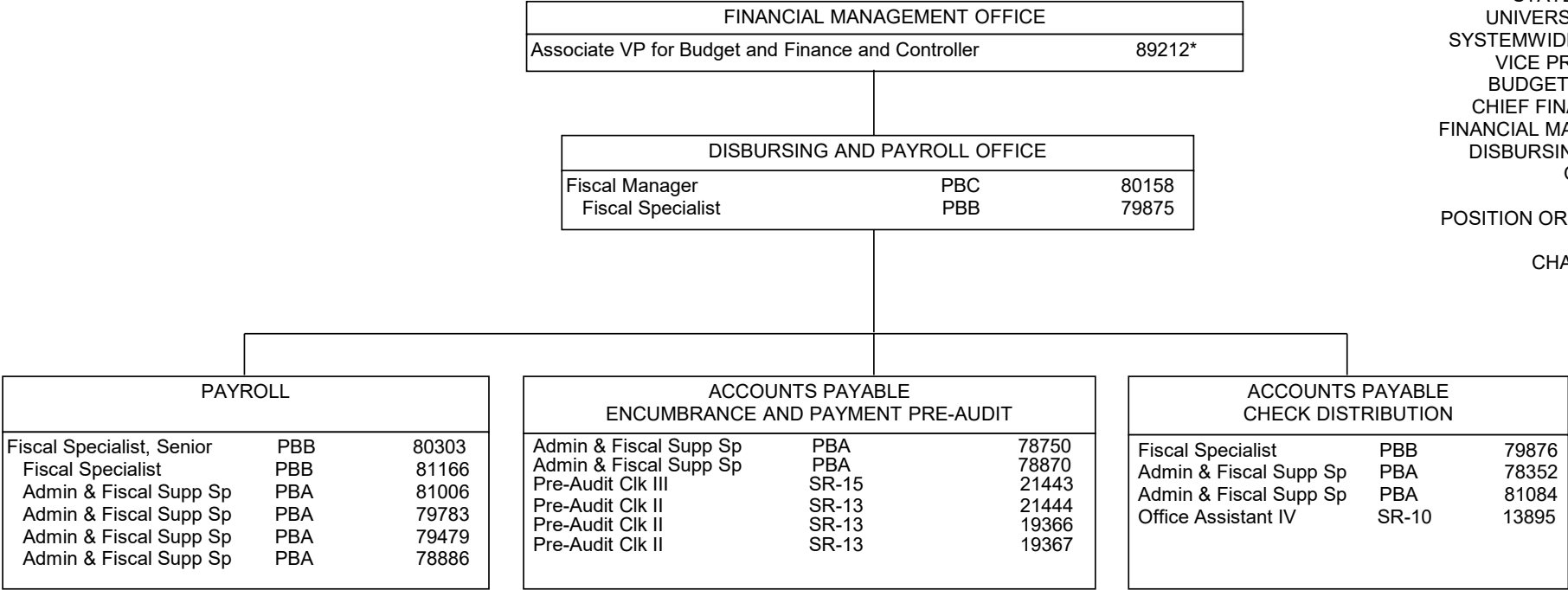
POSITION ORGANIZATION CHART
 CHART VIII A.2



* Excluded from position count, this page

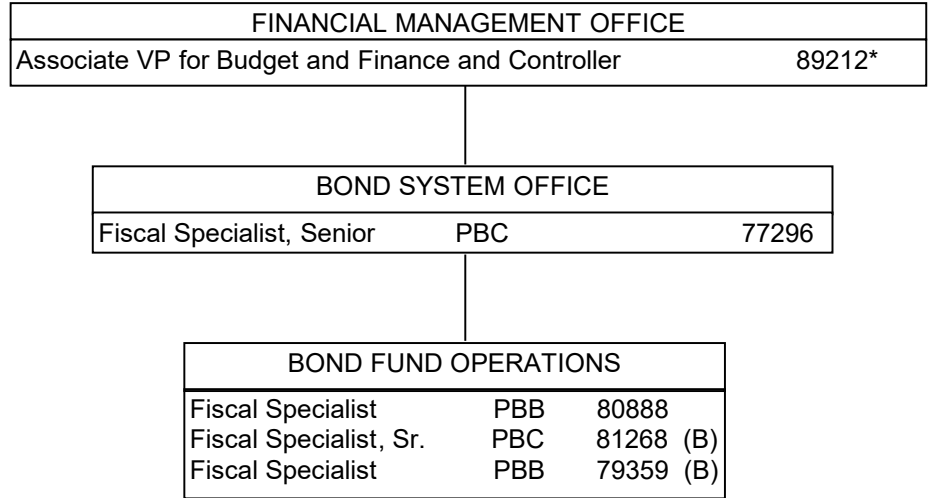
STATE OF HAWAI'I
 UNIVERSITY OF HAWAI'I
 SYSTEMWIDE ADMINISTRATION
 VICE PRESIDENT FOR
 BUDGET AND FINANCE/
 CHIEF FINANCIAL OFFICER
 FINANCIAL MANAGEMENT OFFICE
 DISBURSING AND PAYROLL
 OFFICE

POSITION ORGANIZATION CHART
 CHART VIII A.3



(A) General fund position abolished but retained count: Pre-Audit Clk III #09079

* Excluded from position count, this page

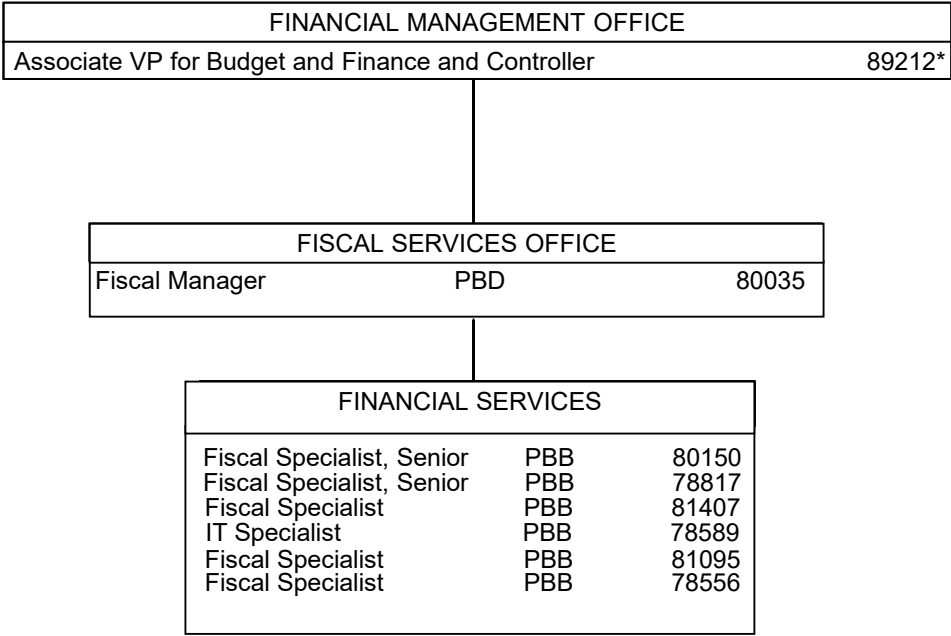


STATE OF HAWAI'I
 UNIVERSITY OF HAWAI'I
 SYSTEMWIDE ADMINISTRATION
 VICE PRESIDENT FOR
 BUDGET AND FINANCE/
 CHIEF FINANCIAL OFFICER
 FINANCIAL MANAGEMENT OFFICE
 BOND SYSTEM OFFICE

POSITION ORGANIZATION CHART
 CHART VIII A.4

* Excluded from position count, this page

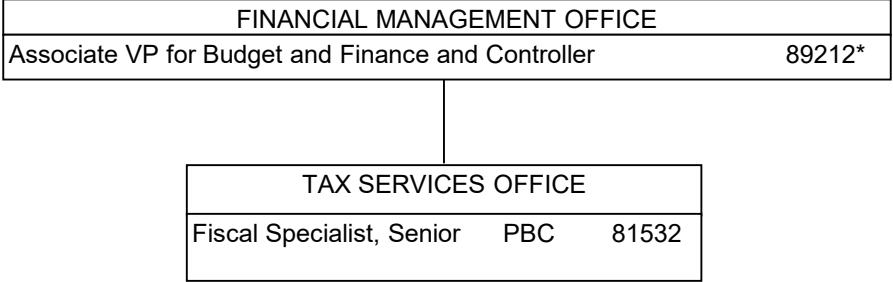
Perm
 General Funds 2.00
 (B) Special Funds 2.00



STATE OF HAWAII
 UNIVERSITY OF HAWAII
 SYSTEMWIDE ADMINISTRATION
 VICE PRESIDENT FOR
 BUDGET AND FINANCE/
 CHIEF FINANCIAL OFFICER
 FINANCIAL MANAGEMENT OFFICE
 FISCAL SERVICES OFFICE

POSITION ORGANIZATION CHART
 CHART VIII A.5

* Excluded from position count, this page

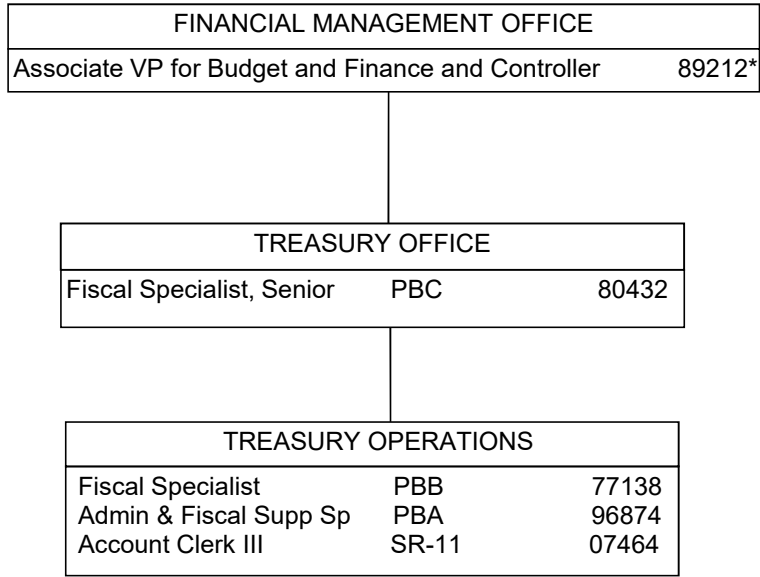


STATE OF HAWAI'I
 UNIVERSITY OF HAWAI'I
 SYSTEMWIDE ADMINISTRATION
 VICE PRESIDENT FOR
 BUDGET AND FINANCE/
 CHIEF FINANCIAL OFFICER
 FINANCIAL MANAGEMENT OFFICE
 TAX SERVICES OFFICE

POSITION ORGANIZATION CHART
 CHART VIII A.6

General Funds Perm
 1.00

* Excluded from position count, this page



STATE OF HAWAI'I
 UNIVERSITY OF HAWAI'I
 SYSTEMWIDE ADMINISTRATION
 VICE PRESIDENT FOR
 BUDGET AND FINANCE/
 CHIEF FINANCIAL OFFICER
 FINANCIAL MANAGEMENT OFFICE
 TREASURY OFFICE

POSITION ORGANIZATION CHART

CHART VIII A.7

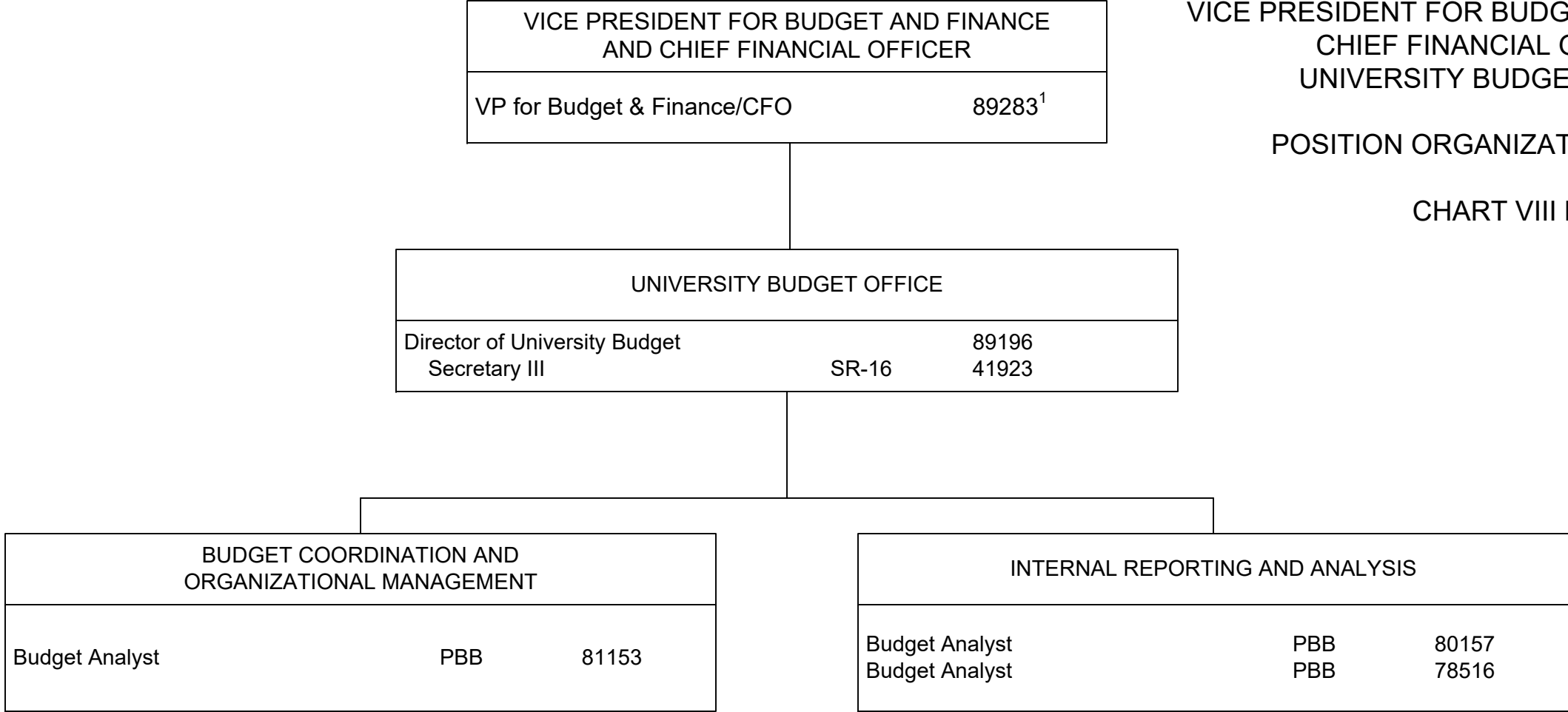
(A) General fund position abolished but retained count: Account Clerk III #0018022
 (Converted to APT position #0096874: Admin & Fiscal Supp Sp, PBA)

* Excluded from position count, this page

STATE OF HAWAII
 UNIVERSITY OF HAWAII
 SYSTEMWIDE ADMINISTRATION
 VICE PRESIDENT FOR BUDGET AND FINANCE/
 CHIEF FINANCIAL OFFICER
 UNIVERSITY BUDGET OFFICE

POSITION ORGANIZATION CHART

CHART VIII B



¹ Excluded from position count