

**OFFICE OF THE VICE CHANCELLOR FOR  
ADMINISTRATIVE AFFAIRS**

<b>HUMAN RESOURCES</b>			
<b>Org Code: HIHR</b>			
HUMAN RESOURCES MANAGER	PBC	#80461	1.00
HUMAN RESOURCES SPEC.	PBB	#78680	1.00
HUMAN RESOURCES SPEC.	PBB	#79556	1.00
HUMAN RESOURCES SPEC.	PBA	#80928	1.00
HUMAN RESOURCES ASST. IV	SR11	#11633	1.00
HUMAN RESOURCES ASST. IV	SR11	#44262	1.00

**OFFICE OF THE VICE CHANCELLOR  
 FOR ADMINISTRATIVE AFFAIRS**

**AUXILIARY SERVICES**  
**Org Code: HIAUX**  
 AUXIL & FAC SERVICES MANAGER PBC #80755 1.00  
 OFFICE ASSISTANT IV SR10 #24540 1.00

AUXIL & FAC SERVICES OFFICER	PBB	#81473	1.00
OFFICE ASSISTANT IV	SR10	#48812	1.00
CASHIER I	SR10	#51303(W)	1.00

JANITOR III	WS2	#12551	#14737	#33411	#36751	4.00
JANITOR II	BC2					20.50
		#13965	#22237	#27283	#27285	
		#30519	#30520	#30521	#33405	
		#33406	#33407	#33408	#33409	
		#33410	#33412	#33413	#47299	
		#900462	#900463	#900510	#900512	
		#900511	(.50 FTE)			
BUILDING & GROUNDS CUSTODIAN II	BC2					2.00
		#900935	#900936			
TRACTOR OPERATOR	BC4		#03091			1.00
GROUNDSKEEPER II	WS2		#12063			1.00
GROUNDSKEEPER I	BC2					5.00
		#27286	#30524	#33414	#47620	
		#900271				

BUILDING MAINTENANCE SUPR I	F109	#900277	1.00
ELECTRICIAN II	WS10	#28621	1.00
ELECTRICIAN I	BC10	#3662	1.00
AIR CONDITIONING MECH II	WS10	#900278	1.00
AIR CONDITIONING MECH I	BC10	#900934	1.00
PLUMBER I	BC10	#900279	1.00
PAINTER I	BC9	#900461	1.00
BLDG MAINT WORKER I	BC9		3.00
		#12071	
		#36748	
		#47660	

**OFFICE OF THE VICE CHANCELLOR FOR  
 ADMINISTRATIVE AFFAIRS**

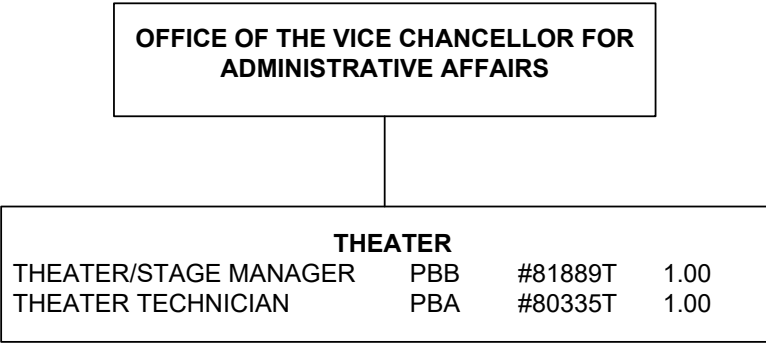
**FACILITIES PLANNING AND CONSTRUCTION**  
**Org Code: HIFPC**

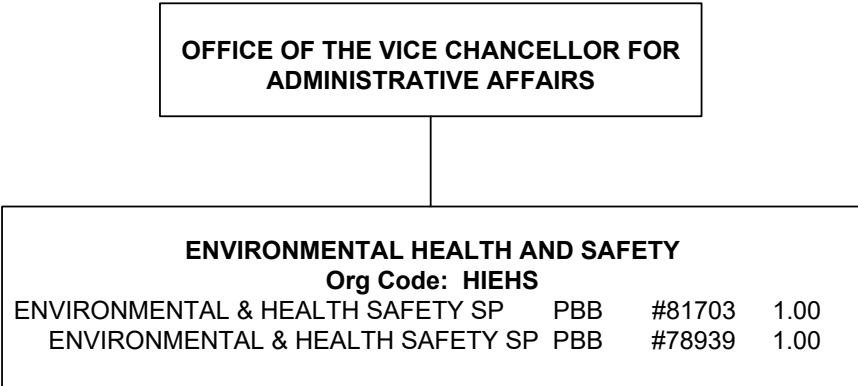
REGISTERED ARCHITECT	PBD	#80767	1.00
AUXIL & FACIL SERV OFFICER	PBB	#78193	1.00
FISCAL SPECIALIST	PBB	#78194	1.00
PROJECT MANAGER	PBB		2.00
		#78437 #81585	
ADMIN & FISCAL SUPP SP	PBA	#78626	1.00

**OFFICE OF THE VICE CHANCELLOR FOR  
 ADMINISTRATIVE AFFAIRS**

<b>BUSINESS MANAGEMENT</b>				
<b>Org Code: HIBMGT</b>				
BUDGET MANAGER		PBD	#78142	1.00
BUDGET ANALYST		PBB	#79853	1.00
FISCAL MANAGER		PBB	#81424	1.00
FISCAL MANAGER		PBC	#81456	1.00
ACCOUNT CLERK III		SR11	#47313	1.00
FISCAL SPECIALIST		PBB	#78753	1.00
ACCOUNT CLERK III		SR11		3.00
	#900391	#900409	#900410	
FISCAL SPECIALIST, SR		PBB	#80152	1.00
ACCOUNT CLERK II		SR8	#900411	1.00
FISCAL SPECIALIST		PBA	#81743	1.00
ACCOUNT CLERK II		SR8		2.00
	#21216	#45477		

STATE OF HAWAI'I  
UNIVERSITY OF HAWAI'I  
UNIVERSITY OF HAWAI'I AT HILO  
ADMINISTRATIVE AFFAIRS  
THEATER  
POSITION ORGANIZATION CHART  
CHART VIIF







**OFFICE OF THE VICE CHANCELLOR FOR  
 ADMINISTRATIVE AFFAIRS**

<b>CAMPUS SECURITY</b>				
<b>Org Code: HISEC</b>				
SAFETY/SECURITY MANAGER			PBC #78997	1.00
UNIVERSITY SECURITY OFFICER II			SR16	3.00
	#900817	#900818	#900819	
UNIVERSITY SECURITY OFFICER I			SR14	23.00
#900820	#900821	#900822	#900823	
#900824	#900825	#900826	#900828	
#900829	#900830	#900831	#900832	
#900833	#900834	#900835	#900836	
#900837	#900838	#900839	#900840	
#900841	#900842	#900843		

**OFFICE OF THE VICE CHANCELLOR FOR  
 ADMINISTRATIVE AFFAIRS**

<b>COMPUTING CENTER</b>				
<b>Org Code: HICOMC</b>				
IT MANAGER	PBC	#81829		1.00
IT SUPPORT TECH	SR15	#111918		1.00
IT SPECIALIST	PBB			6.00
	#77055	#77058	#80824	
	#80972	#81207	#96586	
IT SPECIALIST	PBA			3.00
	#78798	#80841	#80854	