

OFFICE OF THE PRESIDENT

OFFICE OF THE PROVOST

STATE OF HAWAI'I
 UNIVERSITY OF HAWAI'I
 UNIVERSITY OF HAWAI'I AT MĀNOA
 OFFICE OF THE PROVOST
COLLEGE OF ARTS, LANGUAGES & LETTERS
 Organization Chart
 Chart I

COLLEGE OF ARTS, LANGUAGES & LETTERS
 OFFICE OF THE DEAN
 Org Code: MACALL

Dean, #89198	1.00
Program Specialist, PBB, #96897	1.00
Associate Dean, #89023	1.00
Secretary III, SR-16, #35527	1.00
Associate Dean, #89260	1.00
Secretary III, SR-16, #21643	1.00
IT Specialist, PBB, #79386	1.00
IT Specialist, PBA, #81388	1.00
Program Specialist, PBB, #80485	1.00

DEPARTMENT TOTAL:	PERM	TEMP
General Funds:	391.25	19.00
Special Funds:	1.00	--

STUDENT ACADEMIC SERVICES
 Org Code:MACLAD

Director (appointed from faculty)	
Secretary II, SR-14, #44055	1.00
Admin & Fiscal Support Specialist, PBA, #77514	1.00
Academic Advisor, PBB, #80719	1.00
Specialist Type Faculty: #70060, #83818	2.00

ADMINISTRATIVE SERVICES
 Org Code: MAASCL

Admin Svcs Mgr, PBC, #80209	1.00
Admin Officer, PBB, #81871	1.00
Admin Svcs Mgr, PBC, #80828	1.00
Admin Officer, PBB: #78625, #80498, #81228,	3.00
Admin & Fiscal Supp Spec, PBB, #77715	1.00
Admin Officer, Senior, PBB, #81560	1.00
HR Spec, PBB, #78313, #81110	2.00
HR Spec, PBA, #79811	1.00
HR Assistant IV, SR-11, #44609	1.00

INSTRUCTIONAL UNITS
 Org Code: MAIUCL
 CHART II

Academy for Creative Media
 Department of American Studies
 Department of Art & Art History
 Department of Asian Studies
 Department of East Asian Languages & Literatures
 Department of English
 Department of History
 Department of Indo-Pacific Languages & Literatures
 Department of Languages & Literatures of Europe & the Americas
 Department of Linguistics
 Department of Music
 Department of Pacific Islands Studies
 Department of Philosophy
 Department of Religions & Ancient Civilizations
 Department of Second Language Studies
 Department of Theatre & Dance

SCHOOL OF PACIFIC & ASIAN STUDIES
 Org Code: MACPAS
 CHART III

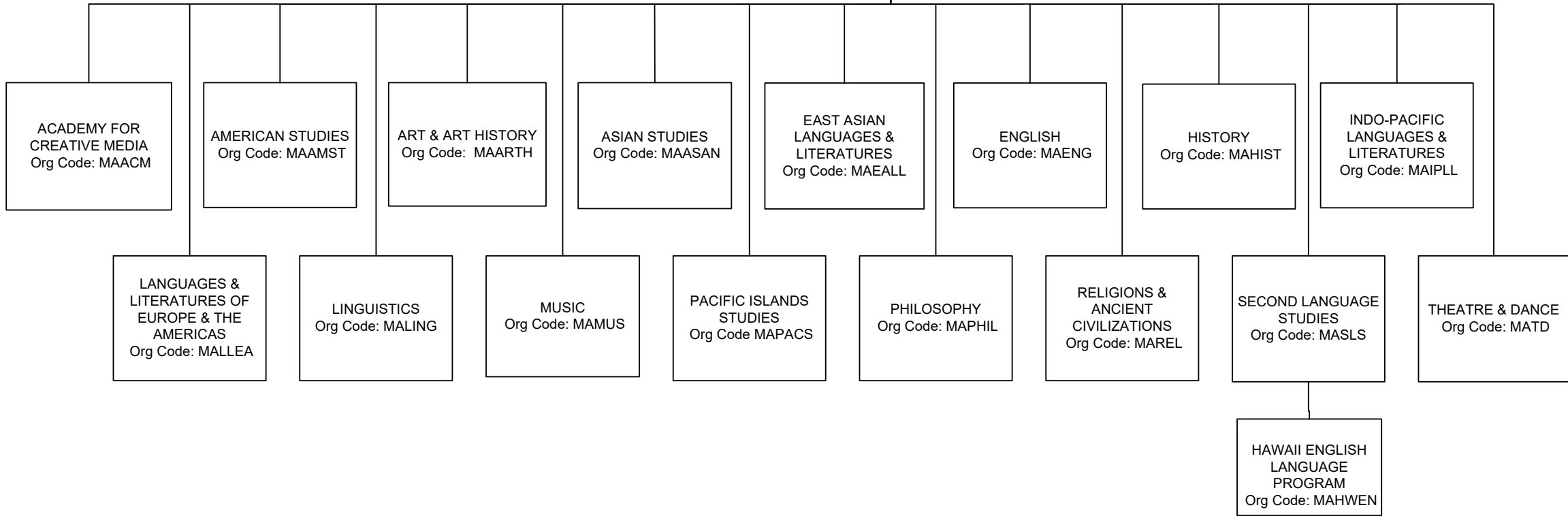
Center for Chinese Studies
 Center for Japanese Studies
 Center for Korean Studies
 Center for Okinawan Studies
 Center for Pacific Islands Studies
 Center for Philippine Studies
 Center for South Asian Studies
 Center for Southeast Asian Studies

CENTERS
 Org Code: MACTCL
 CHART IV

Center for the Arts
 Center for Biographical Research
 Center for Interpretation & Translation Studies
 Center for Language & Technology
 Center for the Study of Human Language
 Mānoa Center for the Humanities & Civic Engagement
 Uehiro Academy for Philosophy and Ethics in Education

CHART TOTAL:	PERM	TEMP
General Funds:	26.00	--

COLLEGE OF ARTS, LANGUAGES & LETTERS
OFFICE OF THE DEAN



STATE OF HAWAI'I
 UNIVERSITY OF HAWAI'I
 UNIVERSITY OF HAWAI'I AT MĀNOA
 OFFICE OF THE PROVOST
 COLLEGE OF ARTS, LANGUAGES & LETTERS
ACADEMY FOR CREATIVE MEDIA
 Organization Chart
 Chart II-A

COLLEGE OF ARTS, LANGUAGES & LETTERS
 OFFICE OF THE DEAN

ACADEMY FOR CREATIVE MEDIA Org Code: MAACM	
Chair (appointed from faculty)	
Admin & Fiscal Supp Spec, PBA, #81035	1.00
Educational Specialist, PBB, #77879	1.00
Educational Specialist, PBB, #78108	1.00
Instructional Faculty: 12.00	
#70042, #70043, #70044, #70058, #70059, #70283, #82524, #82825 #82871, #84115, #84822, #88403	

COLLEGE OF ARTS, LANGUAGES & LETTERS
 OFFICE OF THE DEAN

DEPARTMENT OF AMERICAN STUDIES	
Org Code: MAAMST	
Chair (appointed from faculty)	
Admin & Fiscal Supp Spec, PBA, #81411	1.00
Student Svcs Spec, PBB, #79371	1.00
Specialist Faculty, #83568	1.00
Instructional Faculty:	12.00
#82030, #82091, #82176, #82533, #82547, #82907, #83461, #83812, #84008, #84156, #84168, #84596	
Graduate Assistant:	1.50
#82525, #82526, #82604, #82119T, #82180T	1.00T

COLLEGE OF ARTS, LANGUAGES & LETTERS
 OFFICE OF THE DEAN

DEPARTMENT OF ART & ART HISTORY	
Org Code: MAARTH	
Chair (appointed from faculty)	
Admin & Fiscal Supp Spec, PBA: #77525, #77920	2.00
Office Asst III, SR-08, #14366	1.00
Educational Spec, PBB: #80499, #80667, #80726, #81319	4.00
Machinist, PBB, #81041	1.00
Associate Chair (appointed from faculty)	
Specialist Faculty, #83066	1.00
Instructional Faculty:	18.00
#82067, #82142, #82275, #82445, #82583, #82584, #82886, #82995, #83230, #83252, #83315, #83323, #83588, #83752, #83956, #84050, #84232, #86536	
Graduate Assistant:	3.00
#82514, #82601, #88120, #88152, #88242, #88456, #82136T	0.50T

STATE OF HAWAI'I
 UNIVERSITY OF HAWAI'I
 UNIVERSITY OF HAWAI'I AT MĀNOA
 OFFICE OF THE PROVOST
 COLLEGE OF ARTS, LANGUAGES & LETTERS
DEPARTMENT OF ASIAN STUDIES
 Organization Chart
 Chart II-D

COLLEGE OF ARTS, LANGUAGES & LETTERS
 OFFICE OF THE DEAN

DEPARTMENT OF ASIAN STUDIES Org Code: MAASAN	
Chair (appointed from faculty)	
Secretary II, SR-14, #41125 *	1.00
Specialist Faculty, #88418	1.00
Instructional Faculty:	10.00
#82501, #83625, #83675, #83680, #84210, #84385, #84802, #85068, #85079, #88773	
Graduate Assistant: #88201, #88225	1.00

STATE OF HAWAI'I
 UNIVERSITY OF HAWAI'I
 UNIVERSITY OF HAWAI'I AT MĀNOA
 OFFICE OF THE PROVOST
 COLLEGE OF ARTS, LANGUAGES & LETTERS
DEPARTMENT OF
EAST ASIAN LANGUAGES & LITERATURES
 Organization Chart
 Chart II-E

COLLEGE OF ARTS, LANGUAGES & LETTERS
 OFFICE OF THE DEAN

DEPARTMENT OF EAST ASIAN LANGUAGES & LITERATURES	
Org Code: MAEALL	
Chair (appointed from faculty)	
Secretary II, SR-14, #12854	1.00
Office Asst IV, SR-10, #17384	1.00
Office Asst IV, SR-10, #15344	1.00
Student Svcs Spec, PBB, #80609	1.00
Educational Spec, PBB, #81130	1.00
Instructional Faculty: 26.00	
#82216, #82354, #82532, #82588, #82940, #82952, #82967, #83113, #83139, #83146, #83170, #83317, #83333, #83364, #83379, #83396, #83433, #83469, #83779, #84142, #84301, #84309, #84356, #84536, #84559, #88402, #82973T, #82977T, #82988T, #83100T, #83101T	5.00T
Graduate Assistants: 6.50	
#88003, #88006, #88033, #88260, #88296, #88331, #88358, #88401, #88406, #88421, #88502, #88515, #88553	

COLLEGE OF ARTS, LANGUAGES & LETTERS
 OFFICE OF THE DEAN

STATE OF HAWAI'I
 UNIVERSITY OF HAWAI'I
 UNIVERSITY OF HAWAI'I AT MĀNOA
 OFFICE OF THE PROVOST
 COLLEGE OF ARTS, LANGUAGES & LETTERS
DEPARTMENT OF ENGLISH
 Organization Chart
 Chart II-F

DEPARTMENT OF ENGLISH	
Org Code: MAENG	
Chair (appointed from faculty)	
Secretary II, SR-14, #11175	1.00
Office Asst IV, SR-10, #14367	1.00
Associate Chair (appointed from faculty)	
Educational Spec, PBB, #79171	1.00
Instructional Faculty:	
#82046, #82055, #82098, #82104, #82560, #82673, #82841, #83089, #83193, #83234, #83266, #83272, #83296, #83480, #83489, #83561, #83572, #83595, #83751, #83760, #83918, #84244, #84397, #84520, #84560, #84820, #88222, #88573	28.00
Graduate Assistant:	
#83231, #83476, #83506, #83511, #88118, #88250, #88380	3.50

COLLEGE OF ARTS, LANGUAGES & LETTERS
 OFFICE OF THE DEAN

DEPARTMENT OF HISTORY	
Org Code: MAHIST	
Chair (appointed from faculty)	
Admin & Fiscal Supp Spec, PBA, #81426	1.00
Student Svcs Spec, PBA, #78140	1.00
Associate Chair (appointed from faculty)	
Instructional Faculty:	24.00
#82025, #82044, #82147, #82164,	
#82191, #82370, #82428, #82655,	
#83010, #83318, #83322, #83415,	
#83676, #83754, #83989, #84155,	
#84161, #84241, #84264, #84333,	
#84415, #84432, #84839, #85448	
Graduate Assistant:	3.00
#88030, #88323, #88329, #88342, #88547	
#88556	

COLLEGE OF ARTS, LANGUAGES & LETTERS
OFFICE OF THE DEAN

DEPARTMENT OF INDO-PACIFIC LANGUAGES
AND LITERATURES
Org Code: MAIPLL

Chair (appointed from faculty)

Instructional Faculty:	14.00
#82497, #82613, #82740, #82904, #83192, #83371, #83518, #83543, #83982, #83992, #84044, #84133, #84418, #84532, #83081T	1.00T

STATE OF HAWAI'I
UNIVERSITY OF HAWAI'I
UNIVERSITY OF HAWAI'I AT MĀNOA
OFFICE OF THE PROVOST
COLLEGE OF ARTS, LANGUAGES & LETTERS
**DEPARTMENT INDO-PACIFIC
LANGUAGES & LITERATURES**
Organization Chart
Chart II-H

COLLEGE OF ARTS, LANGUAGES & LETTERS
 OFFICE OF THE DEAN

DEPARTMENT OF
 LANGUAGES & LITERATURES OF EUROPE & THE AMERICAS
 Org Code: MALLEA

Chair (appointed from faculty)	
Secretary II, SR-14, #15346	1.00
Office Asst IV, SR-10, #22367	1.00
Educational Spec, PBB, #81199	1.00
Instructional Faculty:	20.00
#82100, #82101, #82163, #82270, #82827, #83043, #83246, #83247, #83253, #83254, #83265, #83656, #83761, #83975, #84024, #84081, #84101, #84112, #84445, #84682, #83020T, #83029T, #83039T, #83057T, #83102T, #83127T	6.00T
Graduate Assistant:	3.50
#88086, #88124, #88179, #88209, #88343, #88475, #88490	

STATE OF HAWAI'I
 UNIVERSITY OF HAWAI'I
 UNIVERSITY OF HAWAI'I AT MĀNOA
 OFFICE OF THE PROVOST
 COLLEGE OF ARTS, LANGUAGES & LETTERS
**DEPARTMENT OF
 LANGUAGES & LITERATURES OF EUROPE & THE AMERICAS**
 Organization Chart
 Chart II-I

COLLEGE OF ARTS, LANGUAGES & LETTERS
 OFFICE OF THE DEAN

DEPARTMENT OF LINGUISTICS	
Org Code: MALING	
Chair (appointed from faculty)	
Secretary II, SR-14, #13808	1.00
Admin & Fiscal Supp Spec, PBA, #81176	1.00
Instructional Faculty:	11.00
#82155, #82782, #83006, #83008, #83119, #83168, #84110, #84336, #84355, #84618, #85018	
Graduate Assistant:	2.50
#83366, #85420, #88002, #88395, #88469, #83449T, #83452T	1.00T

STATE OF HAWAII
 UNIVERSITY OF HAWAII
 UNIVERSITY OF HAWAII AT MĀNOA
 OFFICE OF THE PROVOST
 COLLEGE OF ARTS, LANGUAGES & LETTERS
DEPARTMENT OF LINGUISTICS
 Organization Chart
 Chart II-J

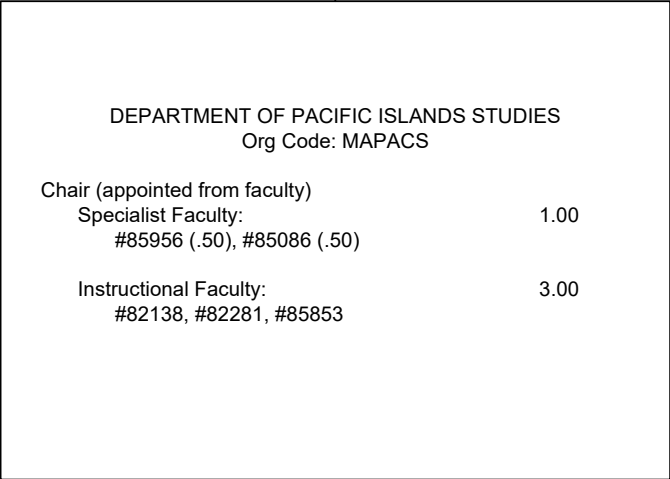
COLLEGE OF ARTS, LANGUAGES & LETTERS
 OFFICE OF THE DEAN

STATE OF HAWAI'I
 UNIVERSITY OF HAWAI'I
 UNIVERSITY OF HAWAI'I AT MĀNOA
 OFFICE OF THE PROVOST
 COLLEGE OF ARTS, LANGUAGES & LETTERS
DEPARTMENT OF MUSIC
 Organization Chart
 Chart II-K

DEPARTMENT OF MUSIC Org Code: MAMUS	
Chair (appointed from faculty)	
Secretary II, SR-14, #11959	1.00
Educational Spec, PBB: #80381	1.00
Admin & Fiscal Supp Spec, PBA, #81033	1.00
Educational Spec, PBA, #81965	1.00
Associate Chair (appointed from faculty)	
Instructional Faculty: 19.00	
#82401, #82438, #82592, #82599, #82739, #82752, #82818, #82948, #83048, #83284, #83454, #83501, #83686, #84061, #84239, #84387, #84406, #84442, #84635	
Graduate Assistant: 3.00	
#88019, #88136, #88237, #88265, #88283, #88603	

STATE OF HAWAI'I
UNIVERSITY OF HAWAI'I
UNIVERSITY OF HAWAI'I AT MĀNOA
OFFICE OF THE PROVOST
COLLEGE OF ARTS, LANGUAGES & LETTERS
DEPARTMENT OF PACIFIC ISLANDS STUDIES
Organization Chart
Chart II-L

COLLEGE OF ARTS, LANGUAGES & LETTERS
OFFICE OF THE DEAN



COLLEGE OF ARTS, LANGUAGES & LETTERS
 OFFICE OF THE DEAN

DEPARTMENT OF PHILOSOPHY	
Org Code: MAPHIL	
Chair (appointed from faculty)	
Admin & Fiscal Supp Speck, PBA, #77431	1.00
Office Asst III, SR-108, #15263	1.00
Editor, PBA, #79339 (.75)	0.75
Specialist Faculty, #82014, #83528	2.00
Instructional Faculty:	11.00
#82156, #82325, #82350, #82474, #82558, #82836, #82877, #83165, #83316, #84419, #84794	
Graduate Assistant:	2.50
#88184, #88213, #88388, #88487, #88507, #82132T	0.50T

STATE OF HAWAI'I
 UNIVERSITY OF HAWAI'I
 UNIVERSITY OF HAWAI'I AT MĀNOA
 OFFICE OF THE PROVOST
 COLLEGE OF ARTS, LANGUAGES & LETTERS
DEPARTMENT OF PHILOSOPHY
 Organization Chart
 Chart II-M

COLLEGE OF ARTS, LANGUAGES & LETTERS
 OFFICE OF THE DEAN

DEPARTMENT OF RELIGIONS & ANCIENT CIVILIZATIONS		
Org Code: MAREL		
Chair (appointed from faculty)		
Admin & Fiscal Supp Spec, PBA, #96823		1.00
Instructional Faculty:		
#82065, #82115, #82203, #82205, #82340, #82733, #83427, #84056, #84089		9.00
Graduate Assistants:		
#82189, #82590, #88026, #88084, #88093, #88282		3.00

STATE OF HAWAI'I
 UNIVERSITY OF HAWAI'I
 UNIVERSITY OF HAWAI'I AT MĀNOA
 OFFICE OF THE PROVOST
 COLLEGE OF ARTS, LANGUAGES & LETTERS
DEPARTMENT OF RELIGION
 Organization Chart
 Chart II-N

STATE OF HAWAI'I
 UNIVERSITY OF HAWAI'I
 UNIVERSITY OF HAWAI'I AT MĀNOA
 OFFICE OF THE PROVOST
 COLLEGE OF ARTS, LANGUAGES & LETTERS
DEPARTMENT OF
SECOND LANGUAGE STUDIES
 Organization Chart
 Chart II-O

COLLEGE OF ARTS, LANGUAGES & LETTERS
 OFFICE OF THE DEAN

DEPARTMENT OF SECOND LANGUAGE STUDIES	
Org Code: MASLS	
Chair (appointed from faculty)	
Secretary II, SR-14, #9083	1.00
Office Asst IV, SR-10, #17424	1.00
Director, English Language Institute (appointed from faculty)	
Educational Spec, PBB, #80561	1.00
Specialist Faculty, #88258	1.00
Instructional Faculty:	
#82201, #82418, #82454, #82508, #82744, #83082, #83163, #83294, #83936, #84247, #85017	11.00
Graduate Assistant:	
#88205, #88263, #88390, #88440, #88444, #88535, #88597, #83446T, #83456T, #83457T	3.50 1.50T

HAWAI'I ENGLISH LANGUAGE PROGRAM	
Org Code: MAHWEN	
Director	
Educational Specialist, PBA, #81443	1.00 (B)

CHART TOTAL:	PERM	TEMP
General Funds:	18.50	1.50
Special Funds:	1.00	--

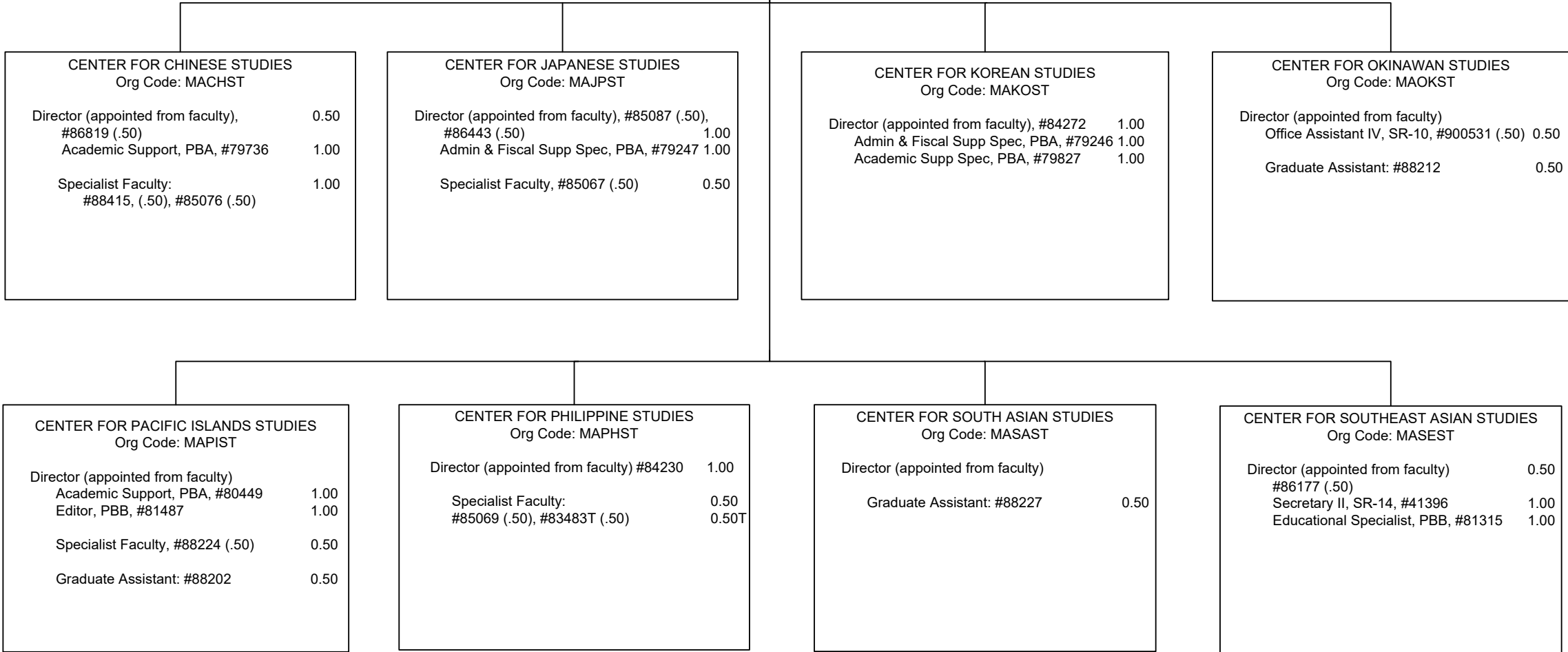
STATE OF HAWAI'I
 UNIVERSITY OF HAWAI'I
 UNIVERSITY OF HAWAI'I AT MĀNOA
 OFFICE OF THE PROVOST
 COLLEGE OF ARTS, LANGUAGES & LETTERS
DEPARTMENT OF THEATRE & DANCE
 Organization Chart
 Chart II-P

COLLEGE OF ARTS, LANGUAGES & LETTERS
 OFFICE OF THE DEAN

DEPARTMENT OF THEATRE & DANCE Org Code: MATD	
Chair (appointed from faculty)	
Secretary II, SR-14, #13647	1.00
Admin & Fiscal Supp Spec, PBA, #77076	1.00
Theater/Stage Manager, PBB, #80119	1.00
Theater Technician, PBB: #78466, #80700, #81269	3.00
Operation Coordinator, PBA, #80994	1.00
Director of Theatre (Associate Chair) (appointed from faculty)	
Director of Dance Program (Associate Chair) (appointed from faculty)	
Instructional Faculty:	15.00
#82110, #82161, #82234, #82260, #82640, #83250, #83337, #83436, #83439, #83591, #84095, #84434, #84574, #84678, #85088	
Graduate Assistant:	6.00
#82419, #82549, #82568, #88000, #88051, #88052, #88053, #88127, #88207, #88211, #88246, #88324, #82117T, #82123T	1.00T

STATE OF HAWAI'I
 UNIVERSITY OF HAWAI'I
 UNIVERSITY OF HAWAI'I AT MĀNOA
 OFFICE OF THE PROVOST
 COLLEGE OF ARTS, LANGUAGES & LETTERS
SCHOOL OF PACIFIC & ASIAN STUDIES
 Organization Chart
 Chart III

COLLEGE OF ARTS, LANGUAGES & LETTERS
 OFFICE OF THE DEAN



STATE OF HAWAII
 UNIVERSITY OF HAWAII
 UNIVERSITY OF HAWAII AT MĀNOA
 OFFICE OF THE PROVOST
 COLLEGE OF ARTS, LANGUAGES & LETTERS
CENTERS
 Organization Chart
 Chart IV

COLLEGE OF ARTS, LANGUAGES & LETTERS
 OFFICE OF THE DEAN

