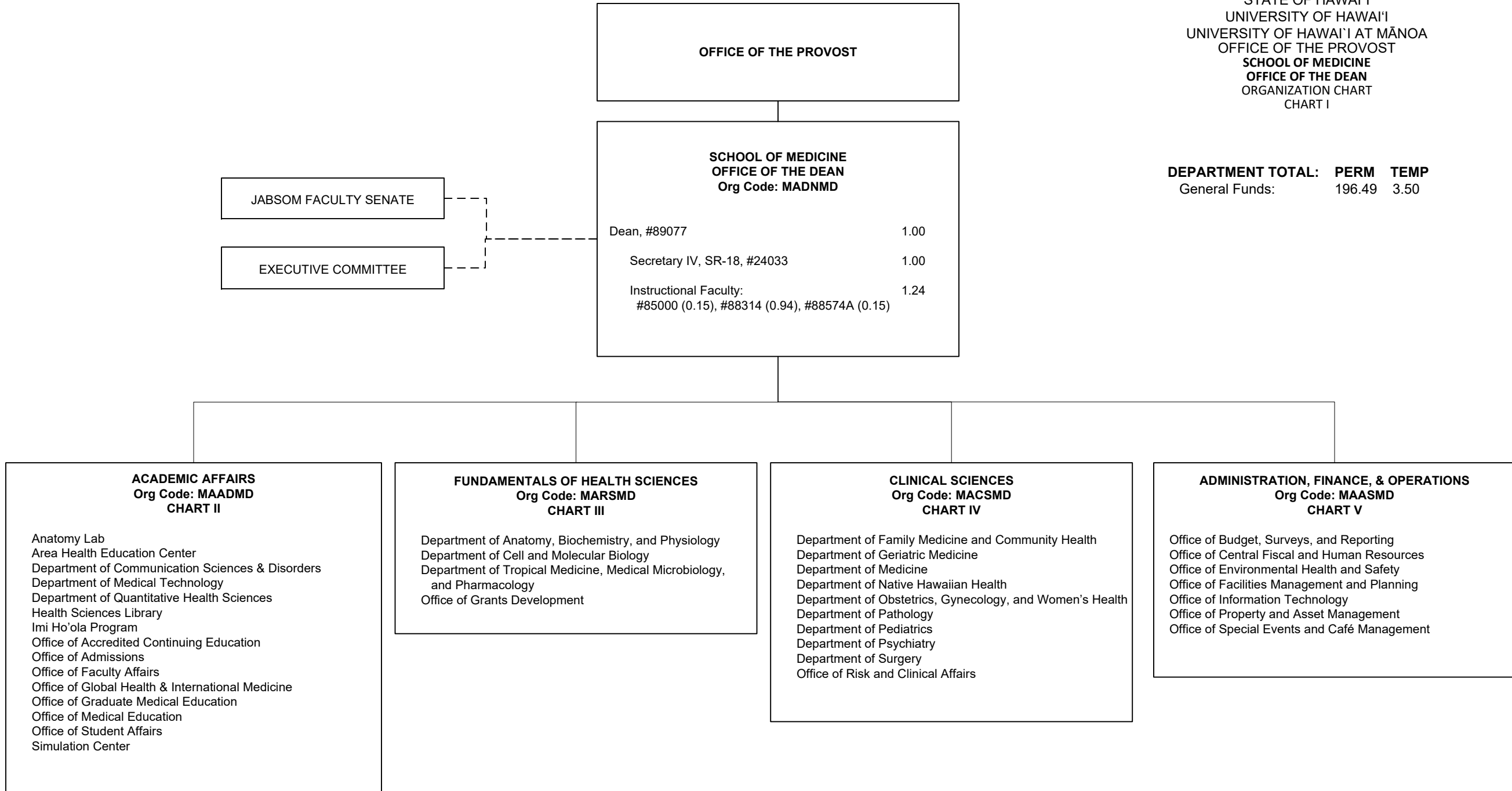


STATE OF HAWAI'I
 UNIVERSITY OF HAWAI'I
 UNIVERSITY OF HAWAI'I AT MĀNOA
 OFFICE OF THE PROVOST
SCHOOL OF MEDICINE
OFFICE OF THE DEAN
 ORGANIZATION CHART
 CHART I



DEPARTMENT TOTAL: **PERM** **TEMP**
 General Funds: 196.49 3.50

CHART TOTAL: **PERM** **TEMP**
 General Funds: 3.24 0.00

SCHOOL OF MEDICINE
OFFICE OF THE DEAN

ACADEMIC AFFAIRS
Org Code: MAADMD

Associate Dean (Academic Affairs), #89075 1.00

Secretary II, SR-14, #23961* 1.00
 Specialist Type Faculty, #88683T 1.00T
 Instructional Faculty: 0.90
 #84167 (0.50), #84167A (0.40)

AREA HEALTH EDUCATION CENTER
Org Code: MAAHMD

Director (appointed from Faculty positions)

Non-Appropriated Funds

DEPARTMENT OF COMMUNICATION SCIENCES AND DISORDERS
Org Code: MACSD

Chair (appointed from Faculty positions)

Instructional Faculty: 3.75
 #82457, #83586, #83651A (0.35), #83869 (0.70), #86199 (0.15), #88568 (0.55)

ANATOMY LAB
Org Code: MAANMD

Director (appointed from Faculty positions)

HEALTH SCIENCES LIBRARY
Org Code: MAKLMD

Director (appointed from Faculty positions)

Librarian Type Faculty: 3.00
 #82256, #85854, #88953

Educational Specialist, PBA: 2.00
 #78590, #78610

Library Assistant IV, SR-09: 1.00
 #900221

IMI HO'OLA PROGRAM
Org Code: MAIHP

Director (appointed from Faculty positions)

(Note: Faculty appointments are held with the Department of Native Hawaiian Health.)

OFFICE OF STUDENT AFFAIRS
Org Code: MASSMD

Director (appointed from Faculty positions)

Instructional Faculty: 0.50
 #85707 (0.50),

Specialist Faculty: 0.75
 #83897 (0.75)

Student Services Specialist, PBB 2.00
 #79198, #80643

Student Services Specialist, PBA 1.00
 #78933

DEPARTMENT OF MEDICAL TECHNOLOGY
Org Code: MAMEDT

Chair (appointed from Faculty positions)

Instructional Faculty: 2.55
 #82126 (0.45), #84955 (0.75), #86213 (0.35), #86735

OFFICE OF GLOBAL HEALTH AND INTERNATIONAL MEDICINE
Org Code: MAGIMD

Director (appointed from Faculty positions)

SIMULATION CENTER
Org Code: MASCMD

Director (appointed from Faculty positions)

OFFICE OF FACULTY AFFAIRS
Org Code: MAFCMD

Director (appointed from Faculty positions)

Instructional Faculty: 0.30
 #83536 (0.30)

OFFICE OF ADMISSIONS
Org Code: MAAMMD

Director (appointed from Faculty positions)

Instructional Faculty: 0.49
 #70163 (0.49)

OFFICE OF GRADUATE MEDICAL EDUCATION
Org Code: MAGRMD

Director & Designated Institutional Official (appointed from Faculty positions)

Instructional Faculty**: 0.85
 #82600 (0.50), #83897A (0.35)

DEPARTMENT OF QUANTITATIVE HEALTH SCIENCES
Org Code: MACAAM

Chair (appointed from Faculty positions)

Instructional Faculty: 4.00
 #82529, #82858, #86194, #85398 (0.50), #85668 (0.50)

Specialist Type Faculty: 0.60
 #85571 (0.60)

OFFICE OF MEDICAL EDUCATION
Org Code: MAMSMD

Director (appointed from Faculty positions)

Instructional Faculty: 7.73
 #82041 (0.50), #83245, #83908 (0.50), #83908A (0.50), #83985, #84644, #85035 (0.50), #85456 (0.50), #85823 (0.50), #88372 (0.50), #88499 (0.49), #88890A (0.25), #88970 (0.49)

Admin & Fis Supp, PBA, #96609 1.00

Educational Specialist, PBB 3.00
 #78783, #79142, #80171

Instr & Stud Supp Sp, PBB 1.00
 #80525

IT Specialist, PBB, #78233 1.00

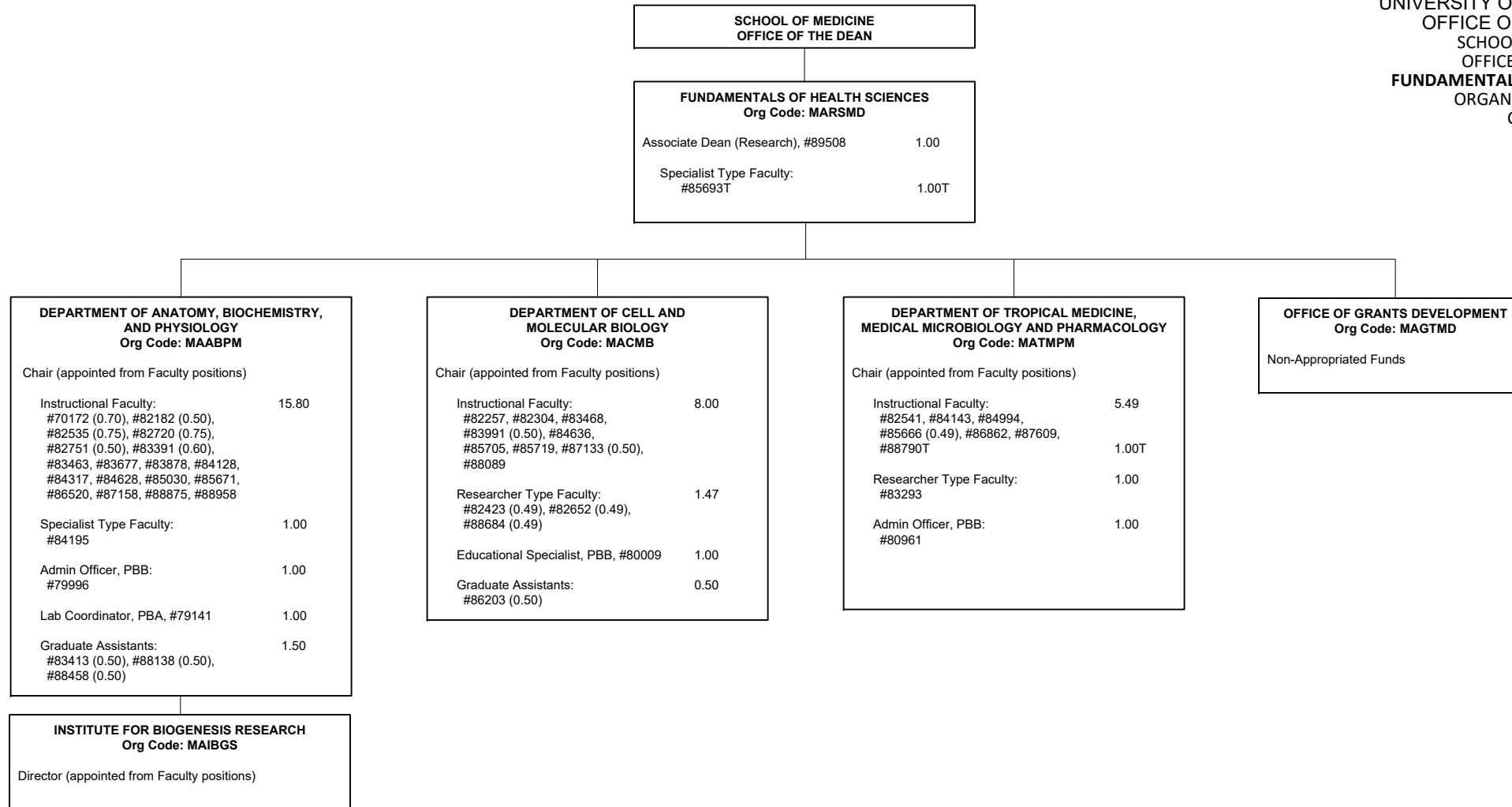
OFFICE OF ACCREDITED CONTINUING EDUCATION
Org Code: MACEMD

Director (appointed from Faculty positions)

* - To be redescribed

** #86237 (0.25) and #83653 (0.25) function in Office of Graduate Medical Education, but are home based in Surgery (reference Chart IV, Surgery)

STATE OF HAWAI'I
 UNIVERSITY OF HAWAI'I
 UNIVERSITY OF HAWAI'I AT MĀNOA
 OFFICE OF THE PROVOST
 SCHOOL OF MEDICINE
 OFFICE OF THE DEAN
FUNDAMENTALS OF HEALTH SCIENCES
 ORGANIZATION CHART
 CHART III



SCHOOL OF MEDICINE
OFFICE OF THE DEAN

CLINICAL SCIENCES
Org Code: MACSMD
 Associate Dean (Clinical Affairs)*

DEPARTMENT OF FAMILY MEDICINE AND COMMUNITY HEALTH
Org Code: MAFMCH
 Chair (appointed from Faculty positions)
 Instructional Faculty: 5.40
 #83526 (0.25), #83670, #83658 (0.49), #83731 (0.50), #83931 (0.25), #83994, #84125 (0.25), #84125B (0.25), #84125C (0.25), #84152 (0.10), #85562 (0.31), #85760 (0.30), #88790 (0.25), #88854 (0.20)

DEPARTMENT OF GERIATRIC MEDICINE
Org Code: MAGERI
 Chair (appointed from Faculty positions)
 Instructional Faculty: 8.09
 #82506 (0.25), #82520 (0.15), #82732 (0.49), #82849 (0.35), #82295, #83025 (0.25), #83099 (0.15), #83176 (0.20), #83177 (0.39), #83575 (0.10), #83958 (0.10), #84125A (0.25), #85315 (0.49), #85489, #85665 (0.14), #88455 (0.20), #88512 (0.20), #88558 (0.34), #88633 (0.20), #88694, #88695 (0.49), #88791 (0.15), #88954 (0.20)
 Administrative Off, PBB: 2.00
 #77639, #79197

DEPARTMENT OF OBSTETRICS, GYNECOLOGY AND WOMEN'S HEALTH
Org Code: MAOBGN
 Chair (appointed from Faculty positions)
 Instructional Faculty: 5.40
 #83618 (0.50), #84032 (0.20), #84134 (0.50), #84159 (0.25), #84939 (0.50), #84985 (0.50), #86325, #86453 (0.50), #86940 (0.50), #87176 (0.45), #88562 (0.50)

DEPARTMENT OF PATHOLOGY
Org Code: MAPATH
 Chair (appointed from Faculty positions)
 Instructional Faculty: 4.50
 #82651 (0.50), #82817 (0.25), #82839 (0.20), #83276 (0.05), #83773 (0.25), #83949 (0.50), #84630 (0.60), #85247 (0.50), #85763 (0.25), #86559 (0.45), #87250 (0.45), #87277 (0.50)
 Secretary II, SR-14, #15609 1.00

DEPARTMENT OF PEDIATRICS
Org Code: MAPED
 Chair (appointed from Faculty positions)
 Instructional Faculty: 4.08
 #82365 (0.20), #83270 (0.25), #83715 (0.25), #84058 (0.75), #84159C (0.25), #84543 (0.08), #85264, #85724 (0.50), #85757 (0.50), #85770 (0.05), #87273 (0.25), #88863T (0.50) 0.50T
 Admin & Fis Supp, PBA, #77914 1.00

DEPARTMENT OF PSYCHIATRY
Org Code: MAPSTY
 Chair (appointed from Faculty positions)
 Instructional Faculty: 6.55
 #70040 (0.25), #82815 (0.49), #83046 (0.49), #83505 (0.49), #83540, #83564, #83843 (0.49), #84257 (0.50), #84390 (0.25), #85561 (0.49), #87235, #88880 (0.10)

DEPARTMENT OF NATIVE HAWAIIAN HEALTH
Org Code: MANHH
 Chair (appointed from Faculty positions)
 Instructional Faculty: 7.47
 #70164 (0.49), #82228, #82824 (0.50), #82834, #85569 (0.50), #85614, #85893 (0.50), #86057 (0.50), #86332, #88473 (0.49), #88663 (0.49)
 Specialist Type Faculty: 2.90
 #84554, #85449, #88902 (0.90)
 Administrative Off, PBB, #80900 1.00

DEPARTMENT OF MEDICINE
Org Code: MAMED
 Chair (appointed from Faculty positions)
 Instructional Faculty: 6.83
 #83077 (0.30), #83215 (0.55), #83236 (0.49), #83383 (0.25), #83495 (0.49), #84100 (0.25), #84159A (0.25), #84159B (0.25), #85549 (0.25), #85665A (0.25), #85670 (0.25), #85742 (0.50), #85744 (0.25), #85756 (0.30), #85759 (0.05), #85798 (0.25), #85771 (0.35), #85775 (0.25), #85974 (0.25), #86206 (0.25), #88574 (0.30), #88780 (0.45), #88888 (0.05)
 Specialist Type Faculty: 0.90
 #83979 (0.90)
 Academic Support Sp, PBA, #78982 1.00

OFFICE OF RISK AND CLINICAL AFFAIRS
Org Code: MAEXMD
 Non-Appropriated Funds

DEPARTMENT OF SURGERY
Org Code: MASURG
 Chair (appointed from Faculty positions)
 Instructional Faculty: 7.15
 #82725 (0.25), #83583, #83653 (0.25), #83736 (0.85), #84108 (0.10), #84269 (0.10), #84583 (0.50), #84861 (0.25), #84912 (0.15), #85055 (0.15), #85452 (0.05), #85787 (0.45), #85841, #86086 (0.10), #86237 (0.25), #86969 (0.50), #87688 (0.60), #88453 (0.25), #88541 (0.10), #88700 (0.15), #88792 (0.10)
 Specialist Type Faculty: 1.00
 #84253
 Academic Supp, PBA, #79824 1.00

NATIVE HAWAIIAN CENTER OF EXCELLENCE
Org Code: MANHCE
 Director (appointed from Faculty positions)
 Instructional Faculty: 0.50
 #83906 (0.50)
 Specialist Type Faculty: 1.80
 #83671 (0.90), #84030 (0.90)

CENTER FOR NATIVE AND PACIFIC HEALTH DISPARITIES AND RESEARCH
Org Code: MANPHD
 Director (appointed from Faculty positions)
 Instructional Faculty: 1.00
 #82997

CENTER FOR CARDIOVASCULAR RESEARCH
Org Code: MACCR
 Director (appointed from Faculty positions)
 Instructional Faculty: 3.00
 #82791, #82194, #82978

HAWAII CENTER FOR AIDS RESEARCH
Org Code: MAHCAR
 Director (appointed from Faculty positions)

HYPERBARIC TREATMENT CENTER
Org Code: MAHYMD
 Non-Appropriated Funds

* - To be established

STATE OF HAWAI'I
 UNIVERSITY OF HAWAI'I
 UNIVERSITY OF HAWAI'I AT MĀNOA
 OFFICE OF THE PROVOST
 SCHOOL OF MEDICINE
 OFFICE OF THE DEAN
ADMINISTRATION, FINANCE, AND OPERATIONS
 ORGANIZATION CHART
 CHART V

SCHOOL OF MEDICINE
OFFICE OF THE DEAN

ADMINISTRATION, FINANCE, AND OPERATIONS
ORG CODE: MAASMD

Chief Fin Offcr, JABSOM, #89490	1.00
Contracts and Grants Specialist, PBB, #78653	1.00
Public Information Specialist, PBB, #96676	1.00

OFFICE OF CENTRAL FISCAL AND HUMAN RESOURCES
Org Code: MAFAMD

Admin Svcs Mgr, PBC, #77048	1.00
Admin Officer, Senior PBB: #80170	1.00
Admin Officer, PBB: #77100, #81037	2.00
Fiscal Specialist, PBB: #80007, #80008, #80081, #80185	4.00
HR Specialist, Senior, PBB, #81516	1.00
HR Specialist, PBB: #77021, #77453	2.00

OFFICE OF PROPERTY AND ASSET MANAGEMENT
Org Code: MAxxxx

Project Manager, PBB, #77967	1.00
------------------------------	------

OFFICE OF ENVIRONMENTAL HEALTH AND SAFETY
Org Code: MAEHMD

Environ & Health Safety Sp, PBB, #78063	1.00
---	------

OFFICE OF SPECIAL EVENTS AND CAFÉ MANAGEMENT
Org Code: MASPMD

Non-Appropriated Funds

OFFICE OF INFORMATION TECHNOLOGY
Org Code: MAITMD

IT Specialist, PBC, #79195	1.00
IT Specialist, PBB: #79962, #79973, #81590	3.00
Network Specialist, PBB: #79951	1.00
System Admin, PBB: #79921, #79963	2.00
Web Developer, PBB, #79901	1.00

OFFICE OF BUDGET, SURVEYS, AND REPORTING
Org Code: MABDMD

Budget Analyst, PBB, #80365	1.00
-----------------------------	------

OFFICE OF FACILITIES MANAGEMENT AND PLANNING
Org Code: MAFMMD

Auxiliary Services Mgr, PBD, #78540	1.00
Registered Engineer, PBB, #77697	1.00

MAINTENANCE, GROUNDS AND JANITORIAL SERVICES
Org Code: MAFCMS

Aux & Fac Svcs Off, PBB, #77692	1.00
Build Maint Worker I, BC-09 #900664, #900673	2.00
Aux & Fac Svcs Officer, PBB #77941	1.00
Groundskeeper I, BC-02 #900659	1.00
Air Cond Mech I, BC-10, #900660	1.00
Building and Grounds Custodian II, BC-02, #900658	1.00
Janitor III, WS-02, #900674 (0.50)	0.50
Janitor II, BC-02 #900662, #900663, #900665 (0.50), #900666, #900668 (0.50)	4.00

PARKING, BUILDING ACCESS AND AUXILIARY SERVICES
Org Code: MAPAMD

Engineer, PBB, #78617	1.00
Aux & Fac Svcs Off, PBA, #77776	1.00

CHART TOTAL: PERM TEMP
 General Funds: 40.50 - -