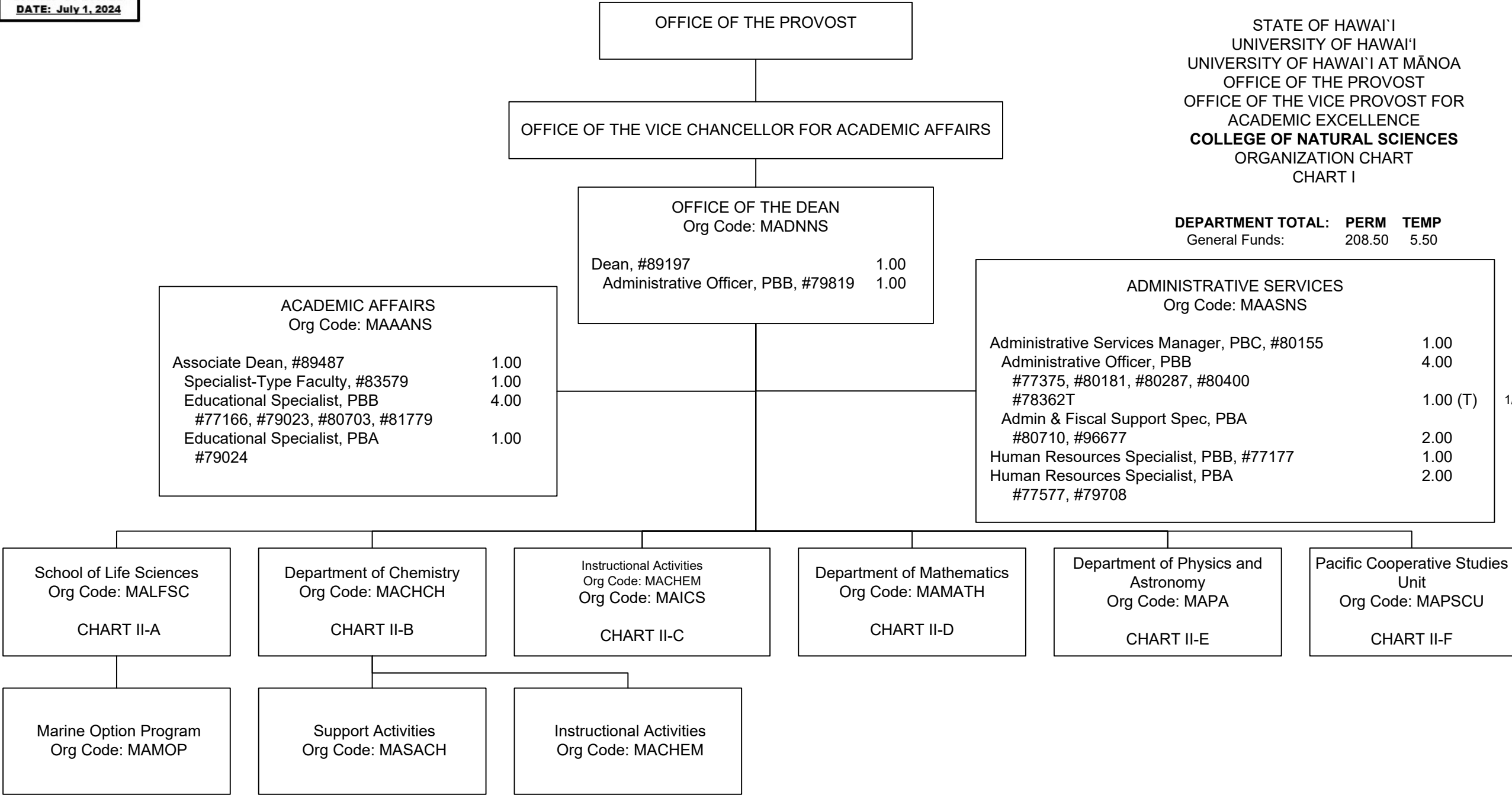
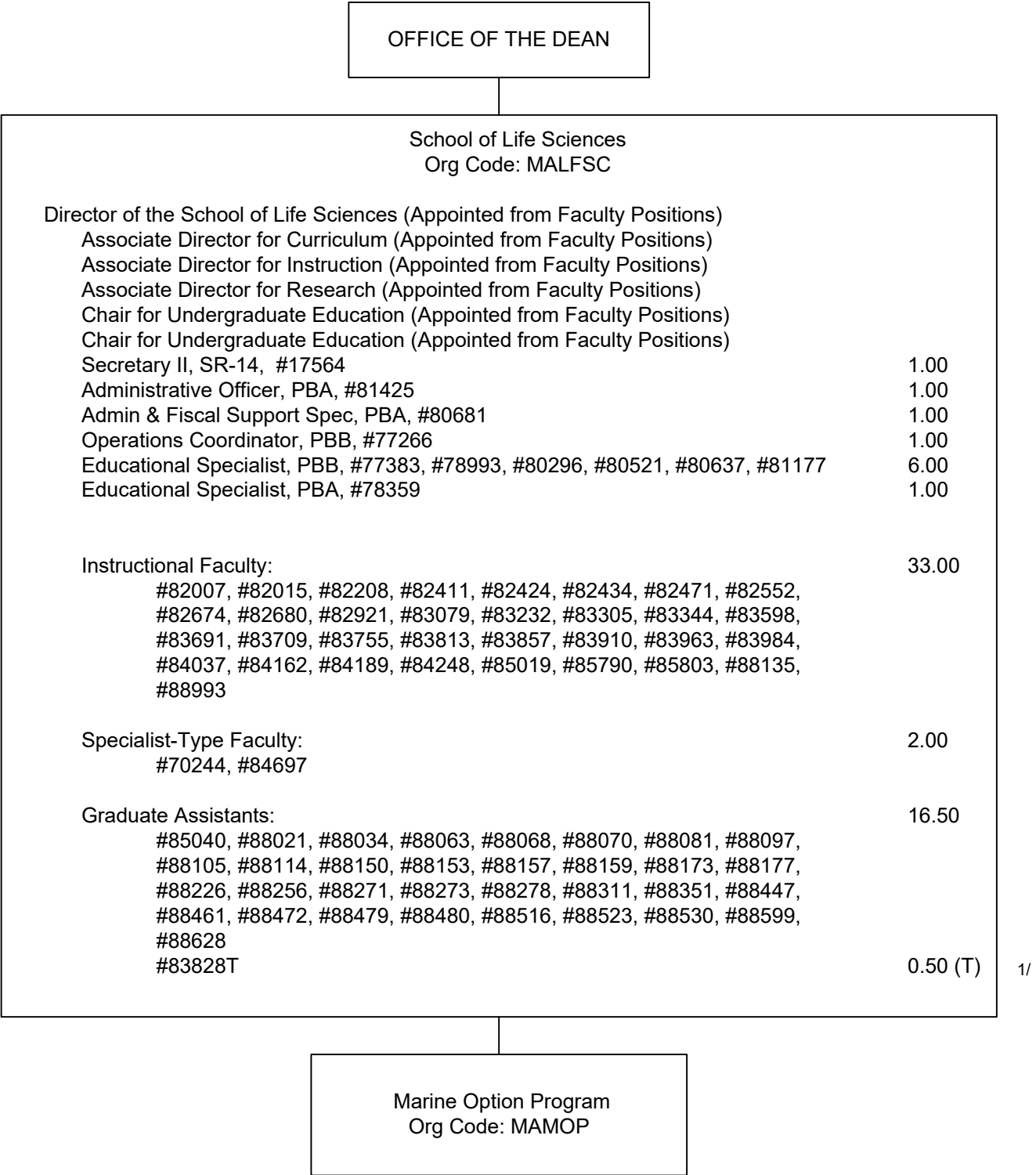


DEPARTMENT TOTAL: **PERM** **TEMP**
General Funds: 208.50 5.50



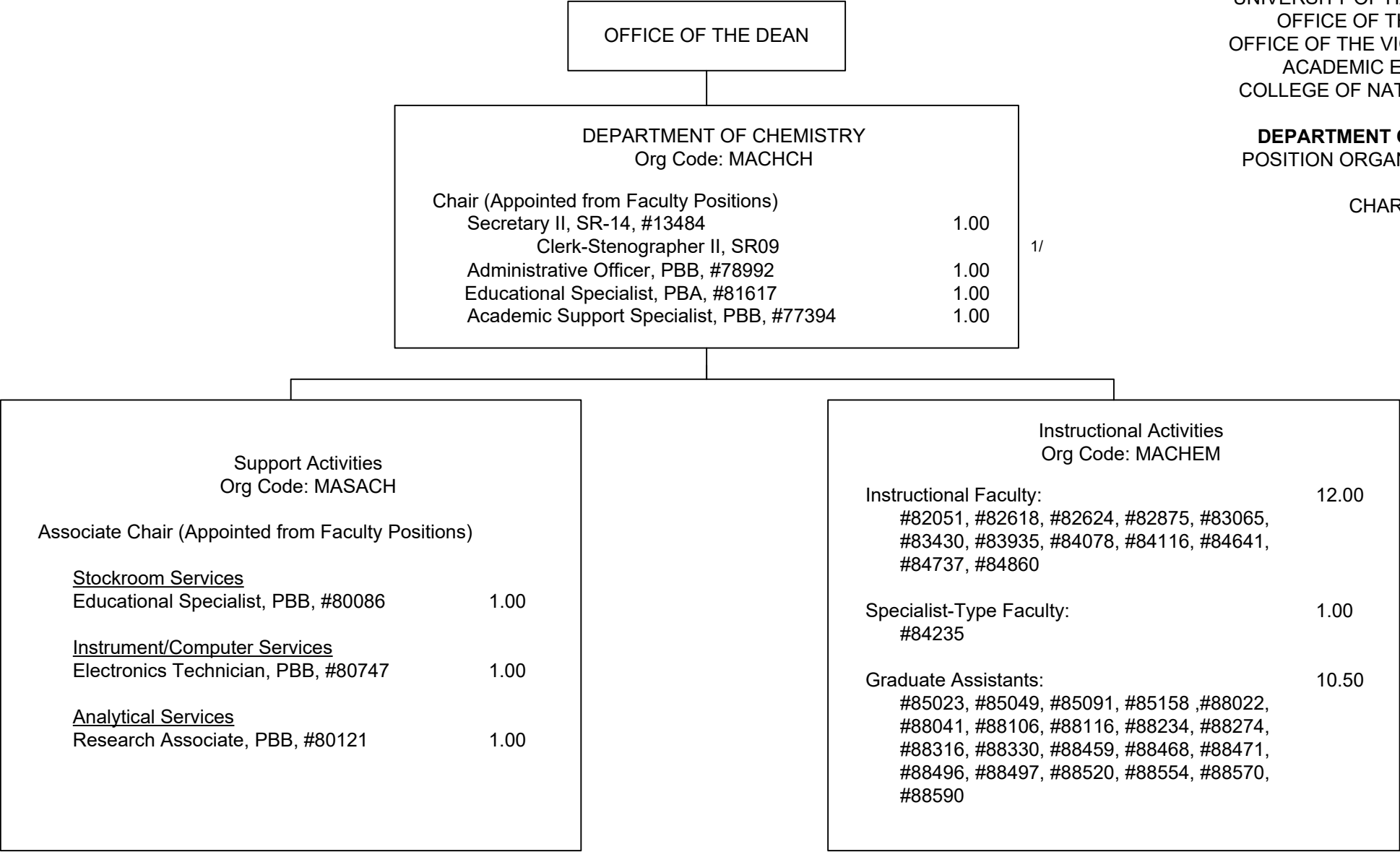
1/ Admin & Fiscal Support Specialist, #78362T in Administrative Services is an appropriated temporary position

CHART TOTAL: **PERM** **TEMP**
General Funds: 19.00 1.00

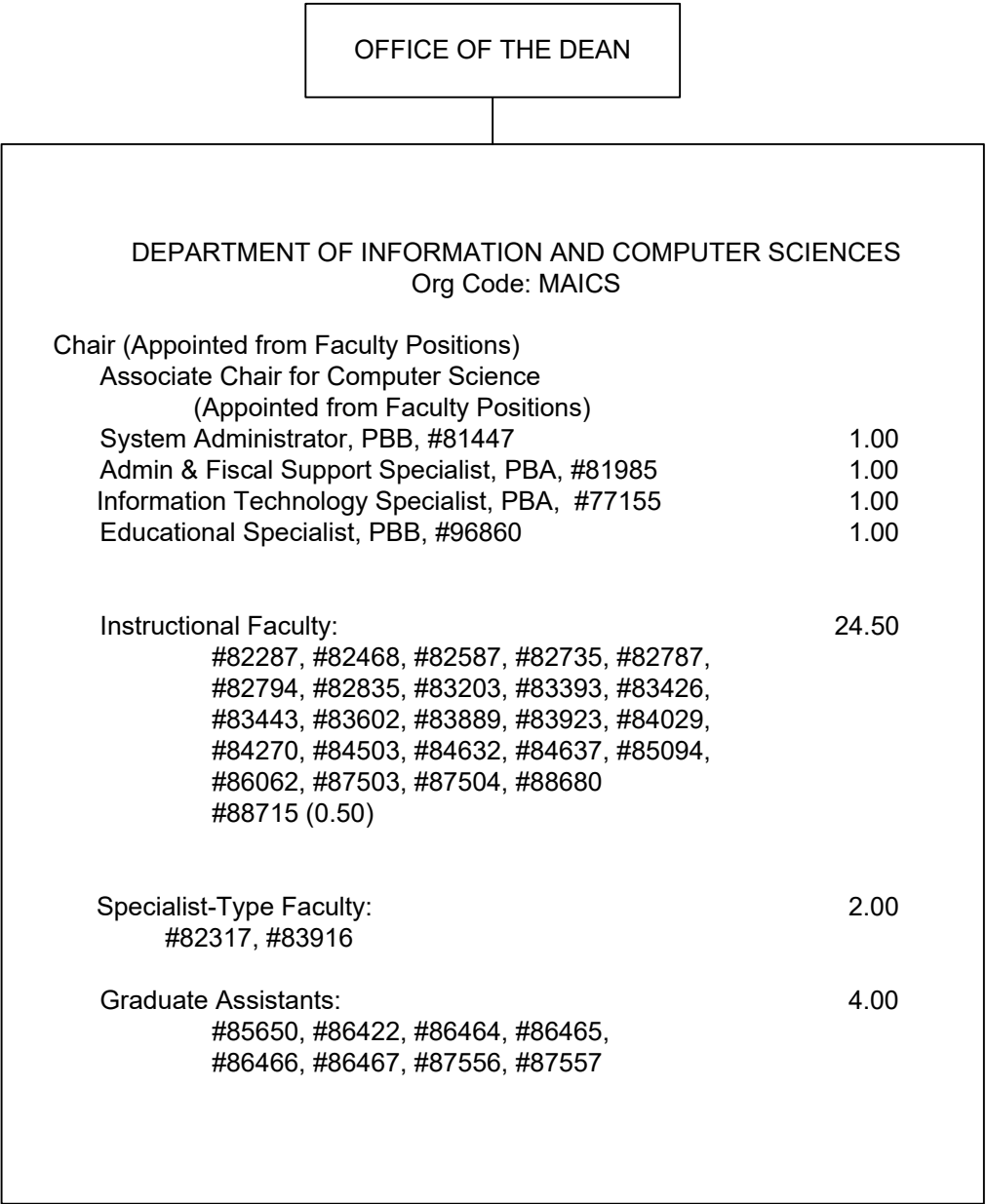


DEPARTMENT OF CHEMISTRY
POSITION ORGANIZATION CHART

CHART II-B



1/ Clerk Steno II in Department of Chemistry abolished, pending re-establishment.



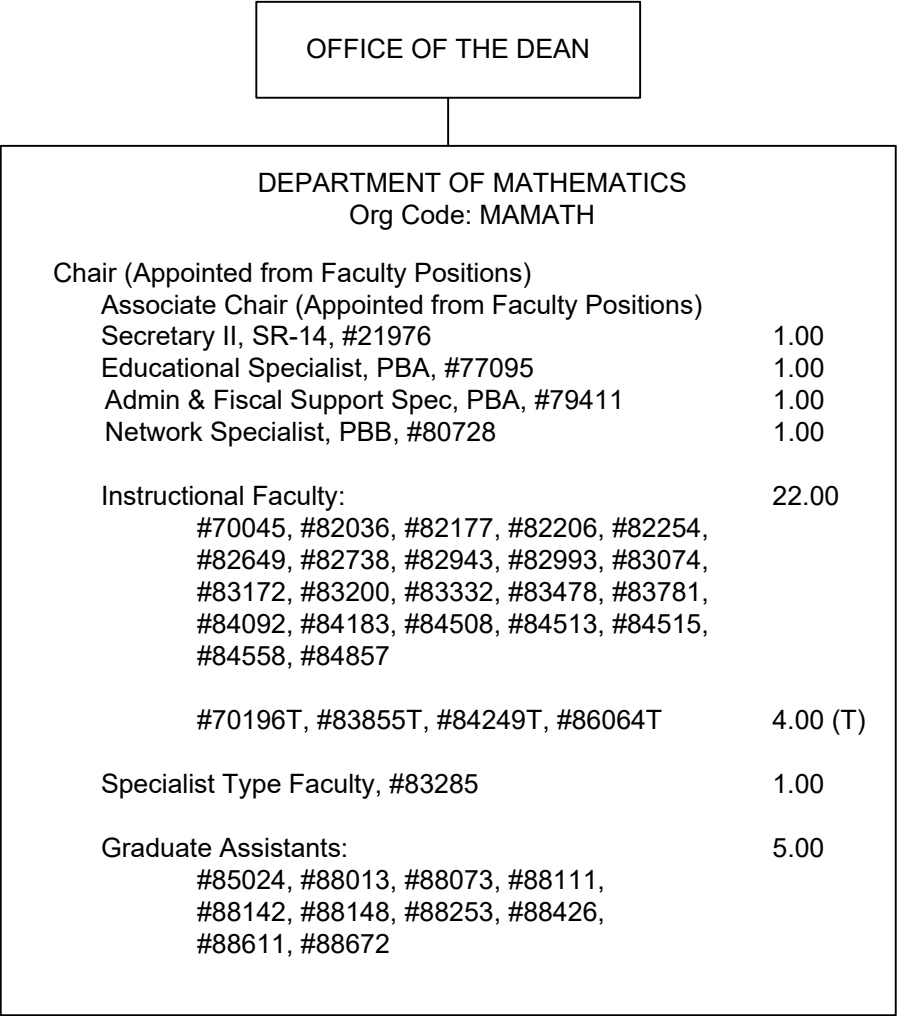
STATE OF HAWAI'I
UNIVERSITY OF HAWAI'I
UNIVERSITY OF HAWAI'I AT MĀNOA
OFFICE OF THE PROVOST
OFFICE OF THE VICE PROVOST FOR
ACADEMIC EXCELLENCE
COLLEGE OF NATURAL SCIENCES

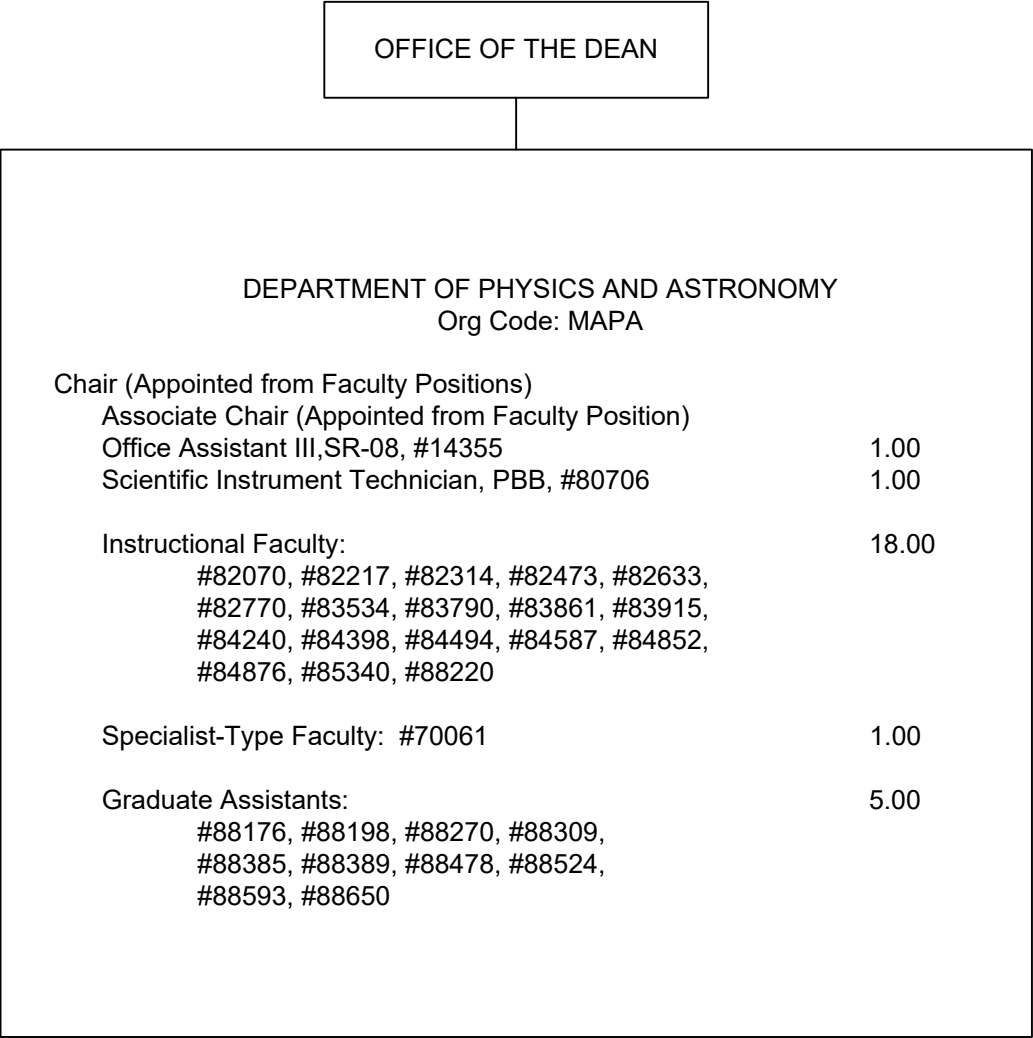
DEPARTMENT OF INFORMATION
AND COMPUTER SCIENCES
POSITION ORGANIZATION CHART

CHART II-C

DEPARTMENT OF MATHEMATICS
POSITION ORGANIZATION CHART

CHART II-D





STATE OF HAWAI'I
UNIVERSITY OF HAWAI'I
UNIVERSITY OF HAWAI'I AT MĀNOA
OFFICE OF THE PROVOST
OFFICE OF THE VICE PROVOST FOR
ACADEMIC EXCELLENCE
COLLEGE OF NATURAL SCIENCES

DEPARTMENT OF PHYSICS AND ASTRONOMY
POSITION ORGANIZATION CHART

CHART II-E



STATE OF HAWAI'I
UNIVERSITY OF HAWAI'I
UNIVERSITY OF HAWAI'I AT MĀNOA
OFFICE OF THE PROVOST
OFFICE OF THE VICE PROVOST FOR
ACADEMIC EXCELLENCE
COLLEGE OF NATURAL SCIENCES

PACIFIC COOPERATIVE STUDIES UNIT
POSITION ORGANIZATION CHART

CHART II-F