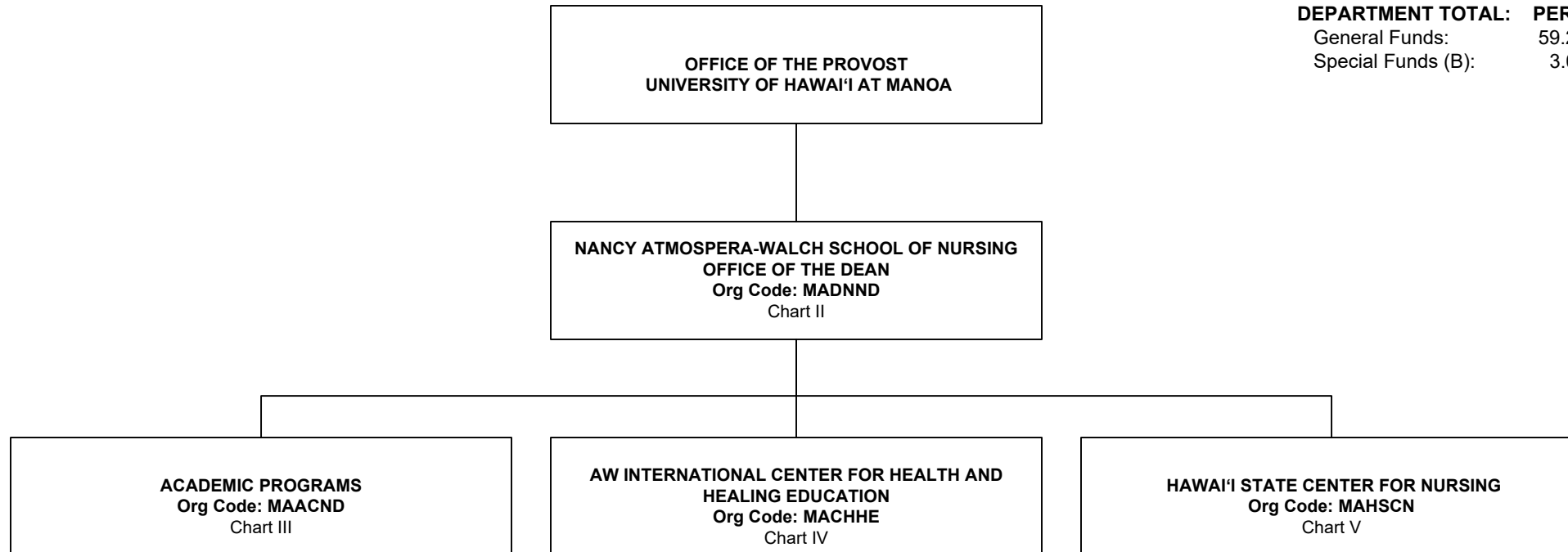


STATE OF HAWAI'I
UNIVERSITY OF HAWAI'I
UNIVERSITY OF HAWAI'I AT MĀNOA
OFFICE OF THE PROVOST
COLLEGE OF HEALTH SCIENCES AND SOCIAL WELFARE
NANCY ATMOSPORA-WALCH SCHOOL OF NURSING

ORGANIZATION CHART
CHART I

DEPARTMENT TOTAL:	PERM	TEMP
General Funds:	59.25	--
Special Funds (B):	3.00	--



STATE OF HAWAII
 UNIVERSITY OF HAWAII
 UNIVERSITY OF HAWAII AT MĀNOA
 OFFICE OF THE PROVOST
 COLLEGE OF HEALTH SCIENCES AND SOCIAL WELFARE
NANCY ATMOSPORA-WALCH SCHOOL OF NURSING

OFFICE OF THE DEAN
 ORGANIZATION CHART
 CHART II

**Nancy Atmospera-Walch School of Nursing
 Community Advisory**

OFFICE OF THE DEAN
 Org Code: MADNND

Dean, # 89118	1.00
Operations Cord, PBC, #80496	1.00
Admin Officer, PBB: #78235, #79008, #96981	3.00
Human Resources Sp, PBB, #78647	1.00
Public Information Sp, PBB, #78164	1.00
Specialist Type Faculty: #85814 (Community Partnerships)	1.00

ADMINISTRATIVE SERVICES
 Org Code: MAASND

Admin Officer, PBB, #80187	1.00
Admin Officer, PBB, #80830	1.00

INFORMATION TECHNOLOGY
 Org Code: MAITND

Network Specialist, PBB, #78180	1.00
Web Developer, PBB, #78150	1.00

ACADEMIC AFFAIRS
 Org Code: MAAAND

Associate Dean, #89156	1.00
Specialist Type Faculty	0.25

'IKE AO PONO
 Org Code: MAIAND

Specialist Type Faculty: #82345	1.00
Instructional Faculty: #83576 (Native Hawaiian & Indigenous Populations)	1.00

STUDENT SERVICES
 Org Code: MASSND

Specialist Type Faculty: #85791	1.00
Student Services Sp, PBB, #78179	1.00
Academic Advisor, PBB: #78002, #78119	2.00
Educational Sp, PBB, #77888	1.00

**TRANSLATIONAL HEALTH
 SCIENCE SIMULATION**
 Org Code: MATHND

Instructional Faculty: #83061	1.00
----------------------------------	------

RESEARCH
 Org Code: MARSND

Associate Dean, #89491	1.00
Admin Officer, PBB, #78178	1.00

1/

CHART TOTAL: **PERM** **TEMP**
 General Funds: 23.25 --

1/ To be established.

STATE OF HAWAI'I
 UNIVERSITY OF HAWAI'I
 UNIVERSITY OF HAWAI'I AT MĀNOA
 OFFICE OF THE PROVOST
 COLLEGE OF HEALTH SCIENCES AND SOCIAL WELFARE
NANCY ATMOSPORA-WALCH SCHOOL OF NURSING

ACADEMIC PROGRAMS
 ORGANIZATION CHART
 CHART III

OFFICE OF THE DEAN
 Org Code: MADNND

ACADEMIC PROGRAMS
 Org Code: MAACND

DEPARTMENT OF NURSING
 Org Code: MANURS

Chairperson (appointed from the Faculty)
 Admin Off, PBB:
 #77491, #79590 2.00
 Office Assistant III, SR-08, #40635 1.00

Instructional Faculty: 21.50
 #70026, #82050, #82076, #82768, #83000, #83072,
 #83095, #83361, #83685, #83724, #83793,
 #83819, #84607 (0.50), #84219, #84424, #84859,
 #84906, #84988, #84991, #85802, #85819,
 #85384 (Native Hawaiian & Indigenous Populations)

Specialist Type Faculty: 1.00
 #82431

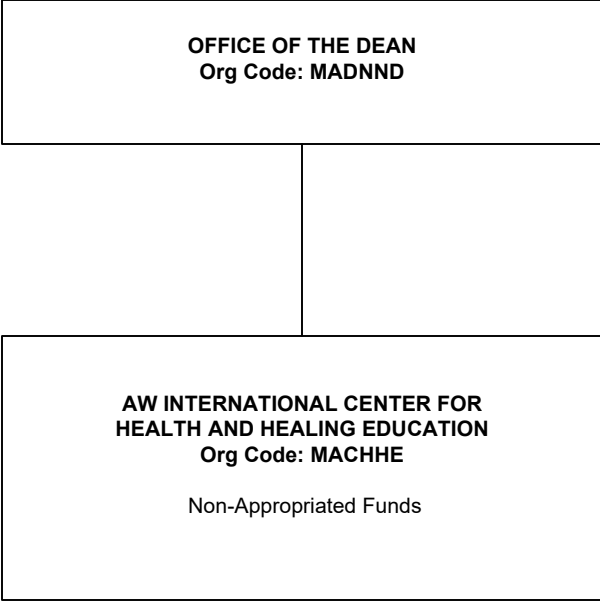
Research Type Faculty: 1.00
 #83227

DEPARTMENT OF DENTAL HYGIENE
 Org Code: MADH

Chairperson (appointed from the Faculty)
 Secretary II, SR-14, #15289 1.00
 Admin & Fiscal Supp, PBA, #80191 1.00

Instructional Faculty: 7.50
 #70052, #70053, #70054, #82634 (0.50), #82634A (0.50),
 #82873, #84582 (0.50), #85804 (0.50), #85804A (0.50),
 #87422 (0.50), #87423 (0.50)

CHART UPDATED
DATE: July 1, 2023



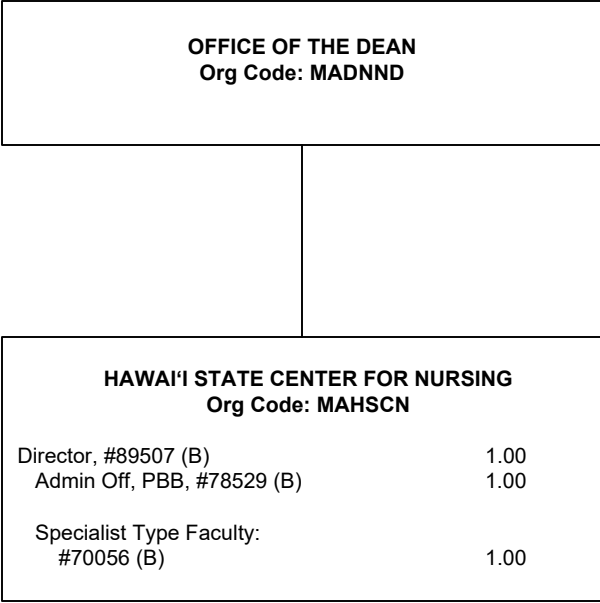
STATE OF HAWAI'I
UNIVERSITY OF HAWAI'I
UNIVERSITY OF HAWAI'I AT MĀNOA
OFFICE OF THE PROVOST
COLLEGE OF HEALTH SCIENCES AND SOCIAL WELFARE
NANCY ATMOSPORA-WALCH SCHOOL OF NURSING

**AW INTERNATIONAL CENTER FOR HEALTH AND
HEALING EDUCATION**
ORGANIZATION CHART
CHART IV

Note: Center currently not in operation

CHART TOTAL:	PERM	TEMP
General Funds:	--	--

CHART UPDATED
DATE: July 1, 2023



STATE OF HAWAI'I
UNIVERSITY OF HAWAI'I
UNIVERSITY OF HAWAI'I AT MĀNOA
OFFICE OF THE PROVOST
COLLEGE OF HEALTH SCIENCES AND SOCIAL WELFARE
NANCY ATMOSPORA-WALCH SCHOOL OF NURSING

HAWAI'I STATE CENTER FOR NURSING
ORGANIZATION CHART
CHART V

CHART TOTAL: **PERM** **TEMP**
Special Funds (B): 3.00 --