

DEPARTMENT TOTAL:	PERM	TEMP
General Funds:	1.00	--
Special Funds (B):	46.50	2.00

Abolished general fund position #24871 (1.00 FTE)

Reallocated positions pending establishment 9.00(B) FTE: 12454(B), 94025F(B), 99034F(B)-99047F(0.50)(B)

Abolished special fund positions 9.50 (B) FTE: 10110(B), 13854(B), 14209(B), 15140(B), 17425(B), 21626(B), 24870(B), 39572(B), 80534(B), 42936(0.50) (B)

CHART TOTAL:	PERM	TEMP
General Funds:	1.00	--
Special Funds (B):	35.50	2.00

STATE OF HAWAII
 UNIVERSITY OF HAWAII
 UNIVERSITY OF HAWAII AT MANOA
 OFFICE OF THE PROVOST
 OUTREACH COLLEGE
OFFICE OF ACADEMIC SUPPORT SERVICES
 ORGANIZATION CHART
 CHART II

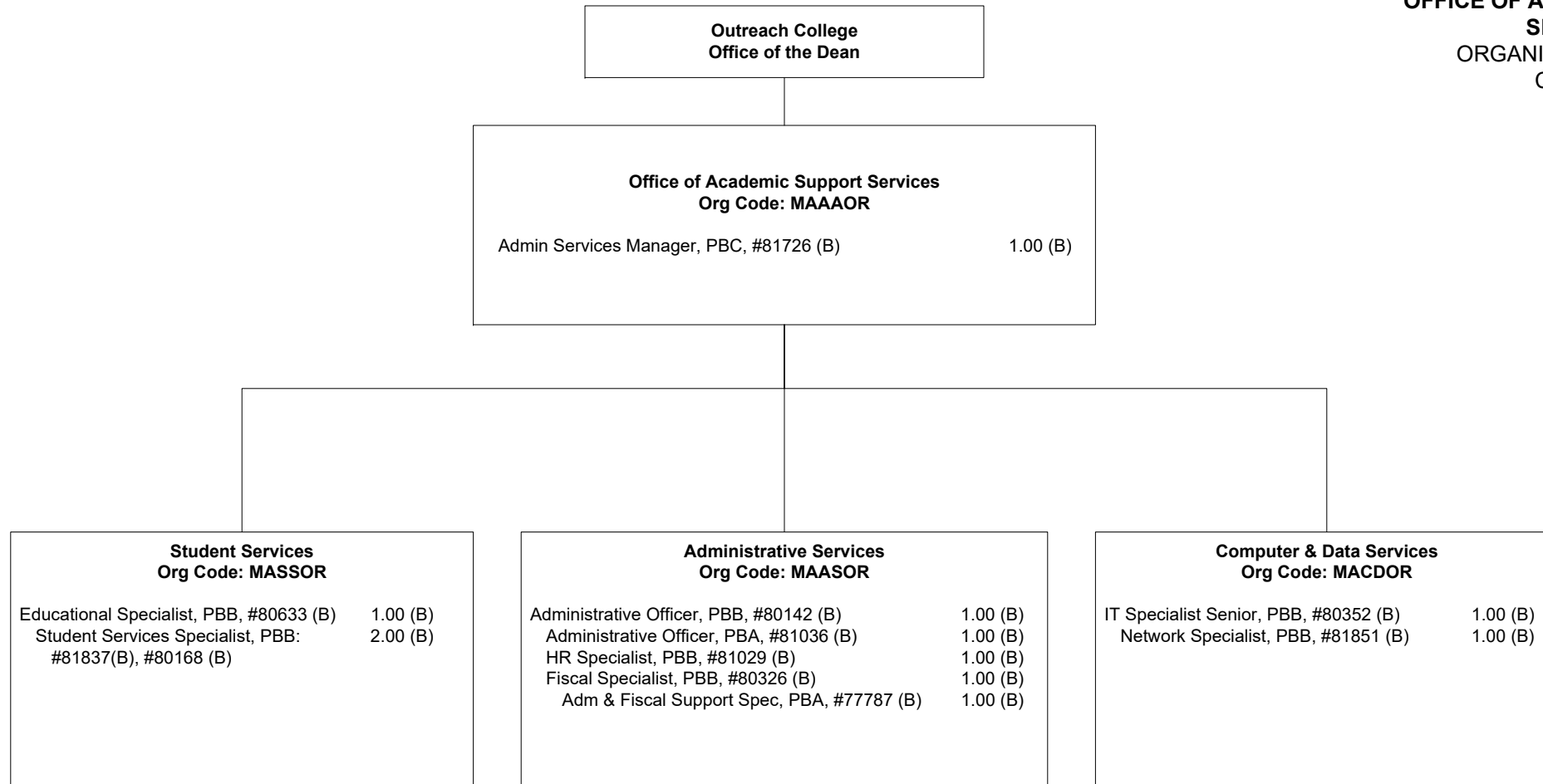


CHART TOTAL: **PERM** **TEMP**
 Special Funds (B): 11.00 --