

STATE OF HAWAII
 UNIVERSITY OF HAWAII
 UNIVERSITY OF HAWAII AT MANOA
 OFFICE OF THE PROVOST
COLLEGE OF SOCIAL SCIENCES
 ORGANIZATIONAL CHART
 CHART I

DEPARTMENT TOTAL: **PERM** **TEMP**
 General Funds: 246.50 3.25

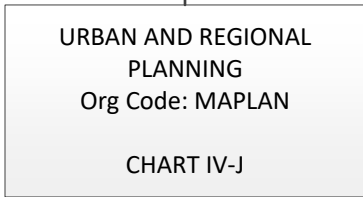
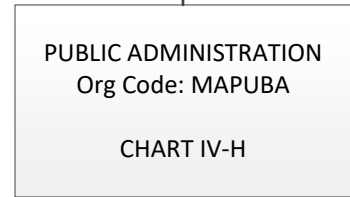
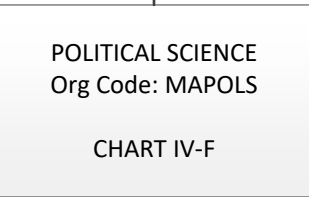
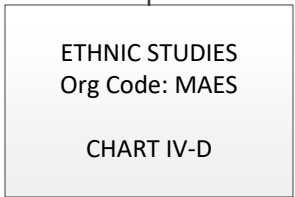
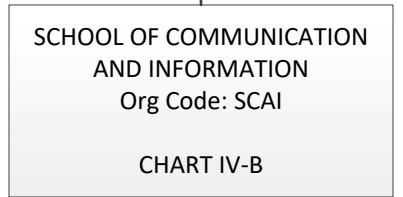
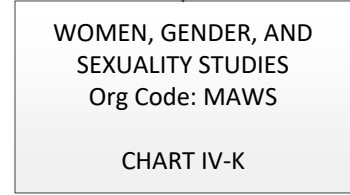
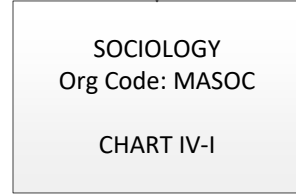
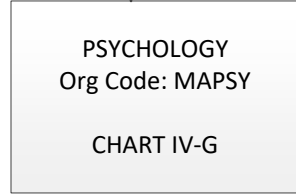
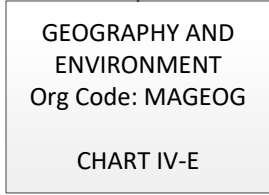
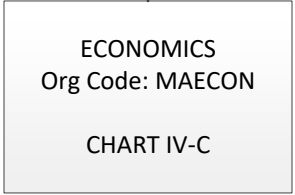
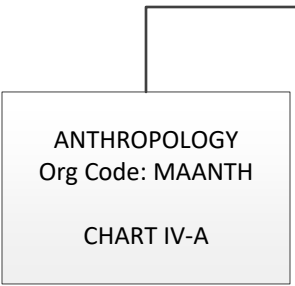
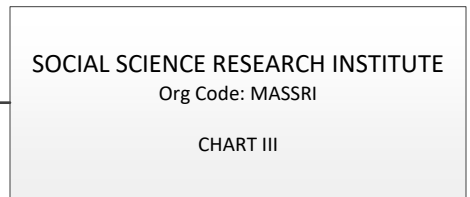
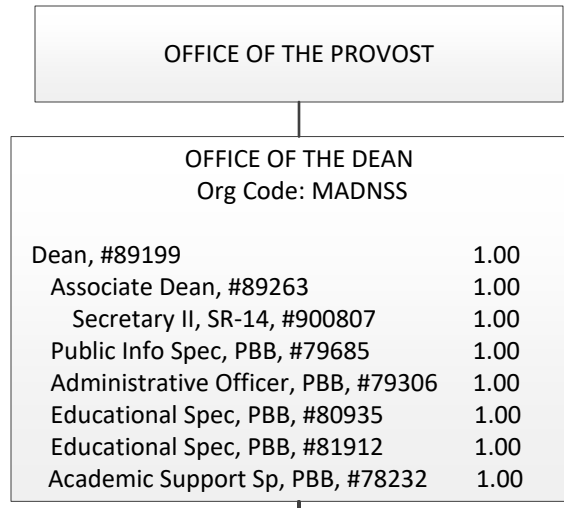


CHART TOTAL: **PERM** **TEMP**
 General Funds: 8.00 --

OFFICE OF THE DEAN
 COLLEGE OF SOCIAL SCIENCES
 Org Code: MADNSS

SUPPORT SERVICES
 Org Code: MASPSS

ADMINISTRATIVE SERVICES
 Org Code: MAASSS

Administrative Svcs Mgr, PBC, #80203	1.00	1/
Administrative Officer, PBB: #77562, #80332	2.00	
Fiscal Specialist, PBB, #80357	1.00	
HR Spec Senior, PBB, #81067	1.00	
HR Spec, PBB, #81282	1.00	
Human Resources Spec, PBA, #77118, #80492	2.00	
Admin & Fiscal Sup Sp, PBA: #77635, #77989, #80946	3.00	
IT Manager, PBB, #81225	1.00	
IT Spec, PBB, #80640	1.00	
IT Spec, PBB, #79311	1.00	
Media Spec, PBB, #81596	1.00	
Lab Manager, PBB, #81953T	1.00T	

ADVISING, CIVIC & COMMUNITY ENGAGEMENT IN THE SOCIAL SCIENCES
 Org Code: MASASS

Director (Appointed from Faculty Type Position)	
Instructional Type Faculty: #82629	1.00
Specialist Type Faculty: #82188, #84791, #84891, #85056	4.00
Student Services Spec, PBB: #77216, #80651, #81219, #77594, #96741	5.00
Program Manager, PBB, #78330	1.00
IT Spec, PBB, #77291	1.00

1/ Admin Svcs Mgr, #80203 in Administrative Services provides technical supervision to positions #77465, #77767, #80107, #81943 (Chart III)

STATE OF HAWAII
 UNIVERSITY OF HAWAII
 UNIVERSITY OF HAWAII AT MANOA
 OFFICE OF THE PROVOST
 COLLEGE OF SOCIAL SCIENCES
SOCIAL SCIENCE RESEARCH INSTITUTE
 ORGANIZATIONAL CHART
 CHART III

OFFICE OF THE DEAN

SOCIAL SCIENCE RESEARCH INSTITUTE
 OFFICE OF THE DIRECTOR
 Org Code: MASSRI

Director		1/
Specialist Type Faculty:	0.75	
#88751 (0.75)		
Adm & Fiscal Support Sp, PBA, #80087	1.00	
#80819T (0.25)	0.25T	2/

FISCAL SERVICES
 Org Code: MAASRI

Administrative Officer, PBB	4.00
#77767, #80107, #81943, #77465	

ECONOMIC RESEARCH ORGANIZATION
 Org Code: MARSRI

Instr Type Faculty:		
#84797 (0.50), #83194 (.50)	1.00	
Instr Type Faculty, #84871	1.00	
Instr Type Faculty:	3.00	
#84643, #84815, #84827		
Specialist Type Faculty:	1.50	
#84870, #88744 (0.50)		
IT Specialist, PBB, #79547	1.00	

CENTER FOR RESEARCH AND EVALUATION IN THE
 SOCIAL SCIENCES
 Org Code: MAYRRI

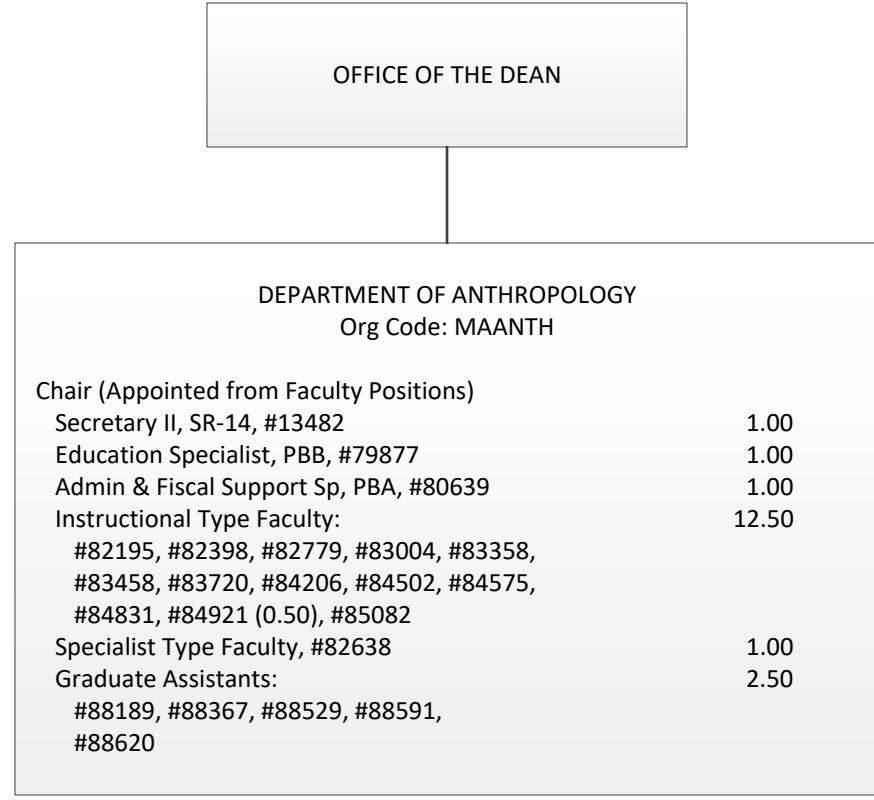
Instr Type Faculty, #85586, #86071	2.00
Instr Type Faculty, #84797 (0.50)	0.50
Ed Specialist, PBB, #80531	1.00

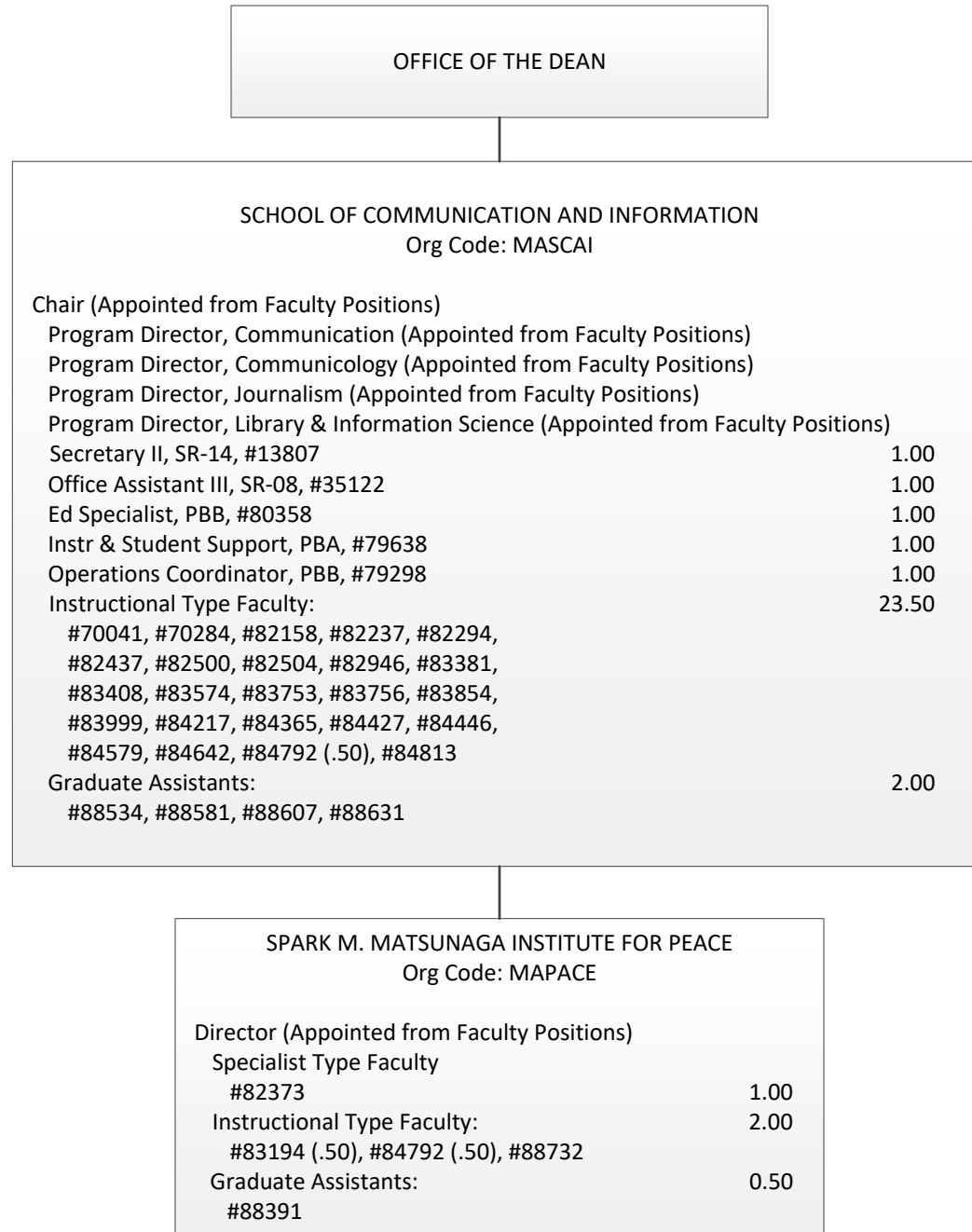
TELECOMMUNICATIONS AND SOCIAL INFORMATICS (TASI)
 RESEARCH PROGRAM / PACIFIC HEALTH INFORMATICS AND
 DATA CENTER (PHIDC)
 Org Code: MAPSAT

Specialist Type Faculty:	3.00
#82763, #83924, #86225	

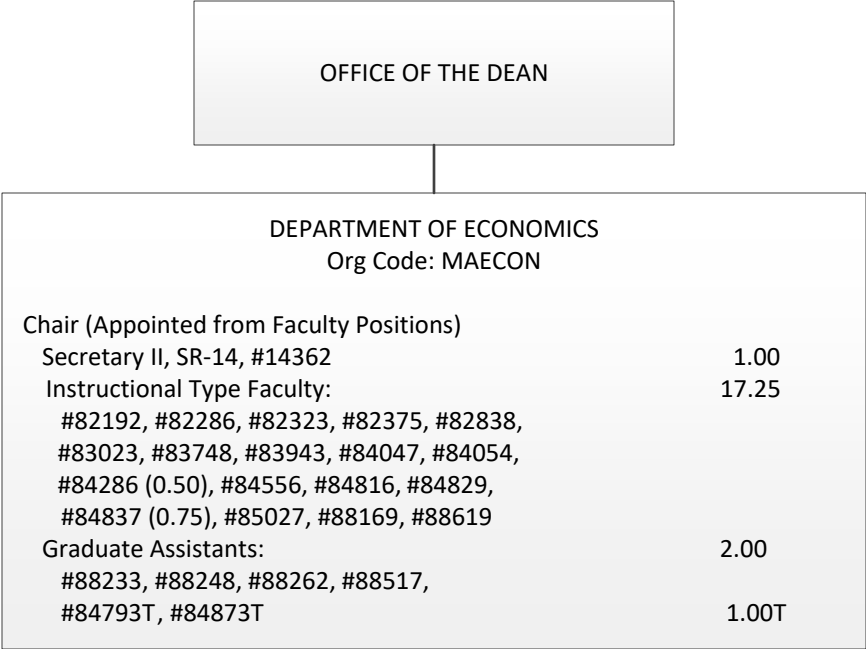
1/ Director swept to Manoa Pool 09/2022 (1.00 FTE)
 2/ #80819T abolished, to be established

CHART TOTAL:	PERM	TEMP
General Funds:	19.75	0.25





STATE OF HAWAII
 UNIVERSITY OF HAWAII
 UNIVERSITY OF HAWAII AT MANOA
 OFFICE OF THE PROVOST
 COLLEGE OF SOCIAL SCIENCES
DEPARTMENT OF ECONOMICS
 ORGANIZATIONAL CHART
 CHART IV-C



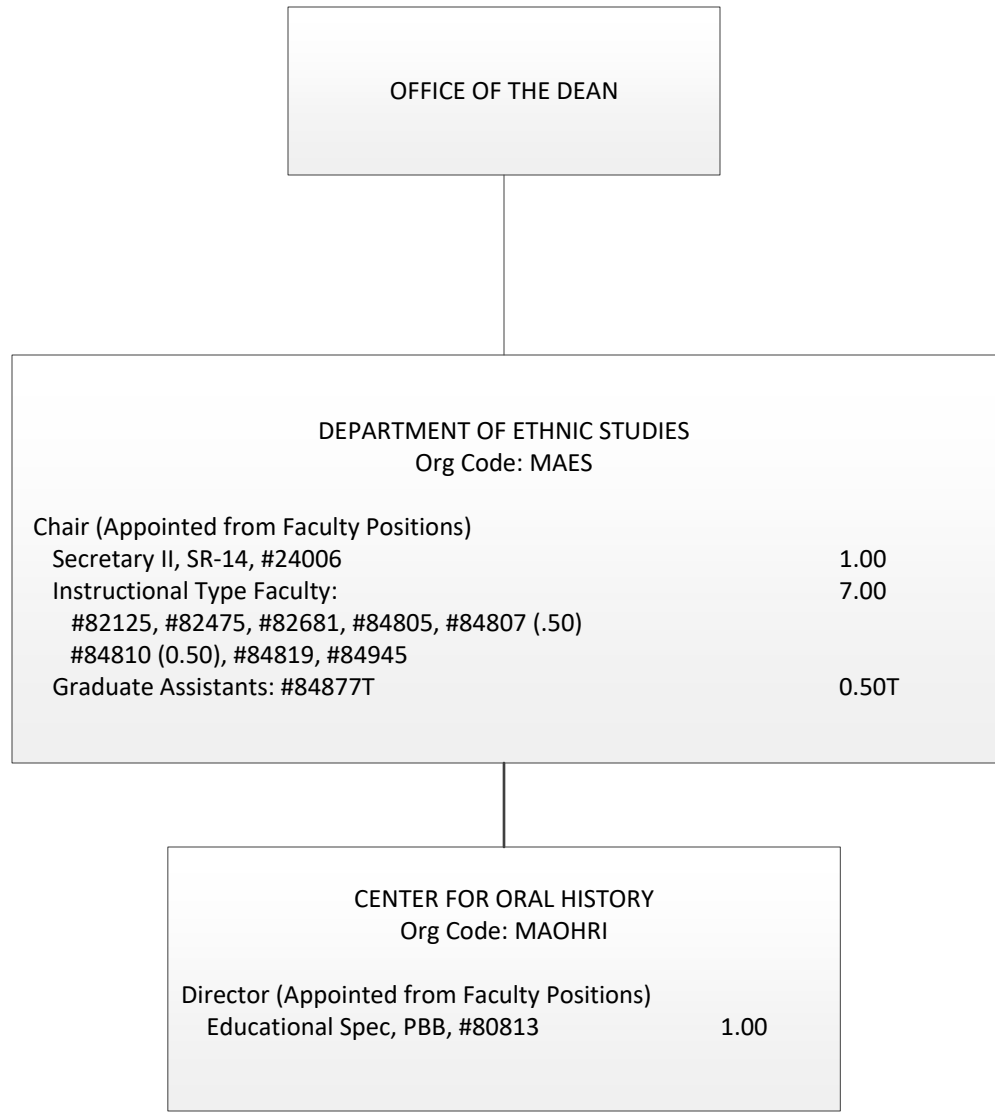


CHART TOTAL:	PERM	TEMP
General Funds:	9.00	0.50

STATE OF HAWAII
 UNIVERSITY OF HAWAII
 UNIVERSITY OF HAWAII AT MANOA
 OFFICE OF THE PROVOST
 COLLEGE OF SOCIAL SCIENCES
DEPARTMENT OF GEOGRAPHY AND ENVIRONMENT
 ORGANIZATIONAL CHART
 CHART IV-E

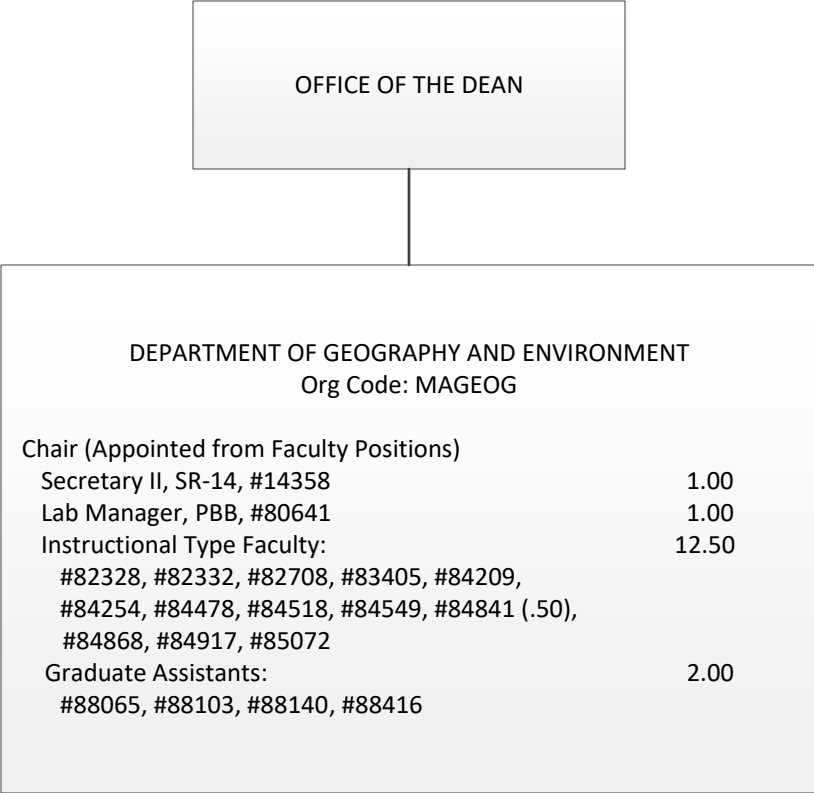
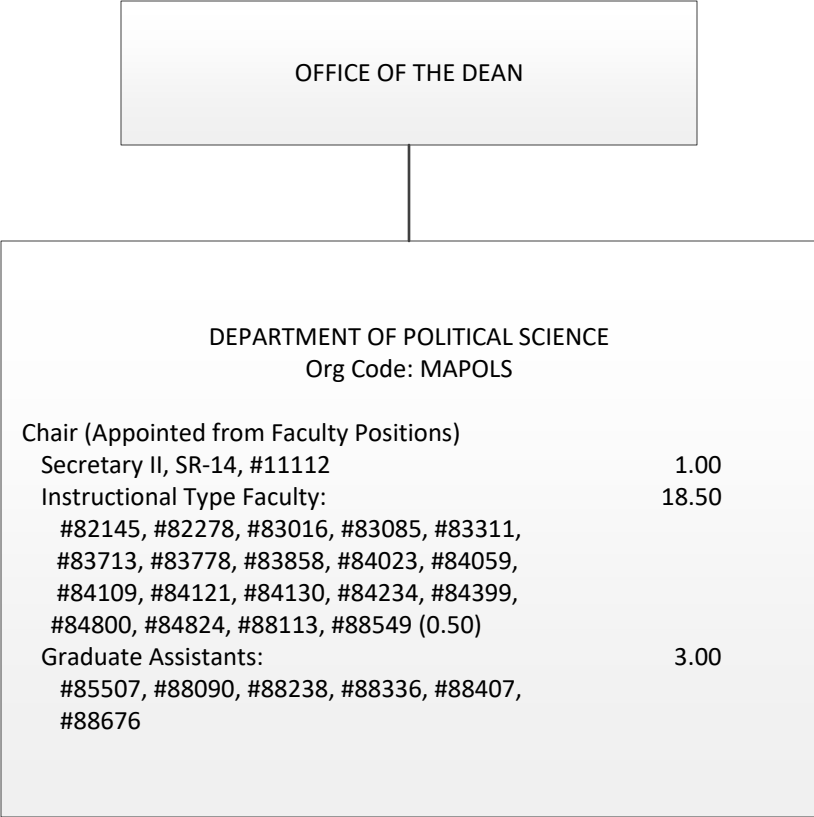


CHART TOTAL:	PERM	TEMP
General Funds:	16.50	--



STATE OF HAWAII
 UNIVERSITY OF HAWAII
 UNIVERSITY OF HAWAII AT MANOA
 OFFICE OF THE PROVOST
 COLLEGE OF SOCIAL SCIENCES
DEPARTMENT OF POLITICAL SCIENCE
 ORGANIZATIONAL CHART
 CHART IV-F

OFFICE OF THE DEAN

DEPARTMENT OF PSYCHOLOGY Org Code: MAPSY	
Chair (Appointed from Faculty Positions)	
Director, Clinical Studies (Appointed from Faculty Positions)	
Admin & Fiscal Supp, PBA, #77621, #79701	2.00
Education Sp, PBB, #80638	1.00
Instructional Type Faculty:	21.50
#82198, #82412, #82534, #82615, #82870, #82679, #83178, #83507, #83626, #84416, #84497, #84505, #84565, #84790, #84828, #84866, #84918 (0.50), #85075, #85450, #85881, #88005, #88183	
Graduate Assistants:	4.50
#85148, #88060, #88217, #88252, #88320, #88362, #88392, #88511, #88559	

STATE OF HAWAII
UNIVERSITY OF HAWAII
UNIVERSITY OF HAWAII AT MANOA
OFFICE OF THE PROVOST
COLLEGE OF SOCIAL SCIENCES
PUBLIC ADMINISTRATION PROGRAM
ORGANIZATIONAL CHART
CHART IV-H

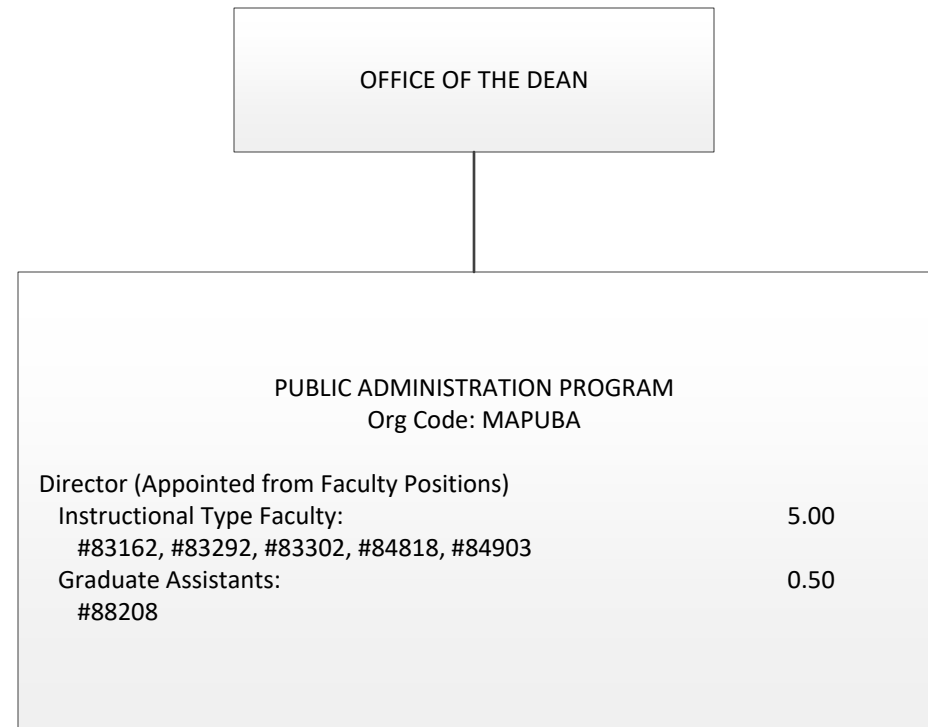
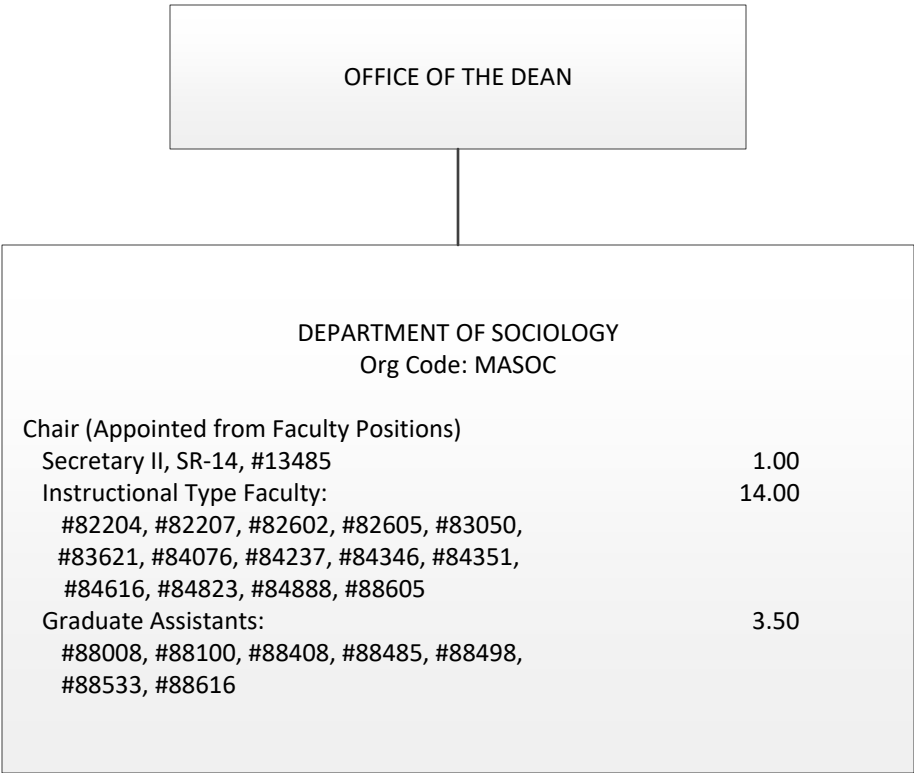


CHART TOTAL:	PERM	TEMP
General Funds:	5.50	--

STATE OF HAWAII
 UNIVERSITY OF HAWAII
 UNIVERSITY OF HAWAII AT MANOA
 OFFICE OF THE PROVOST
 COLLEGE OF SOCIAL SCIENCES
DEPARTMENT OF SOCIOLOGY
 ORGANIZATIONAL CHART
 CHART IV-I



STATE OF HAWAII
 UNIVERSITY OF HAWAII
 UNIVERSITY OF HAWAII AT MANOA
 OFFICE OF THE PROVOST
 COLLEGE OF SOCIAL SCIENCES
DEPARTMENT OF URBAN AND REGIONAL PLANNING
 ORGANIZATIONAL CHART
 CHART IV-J

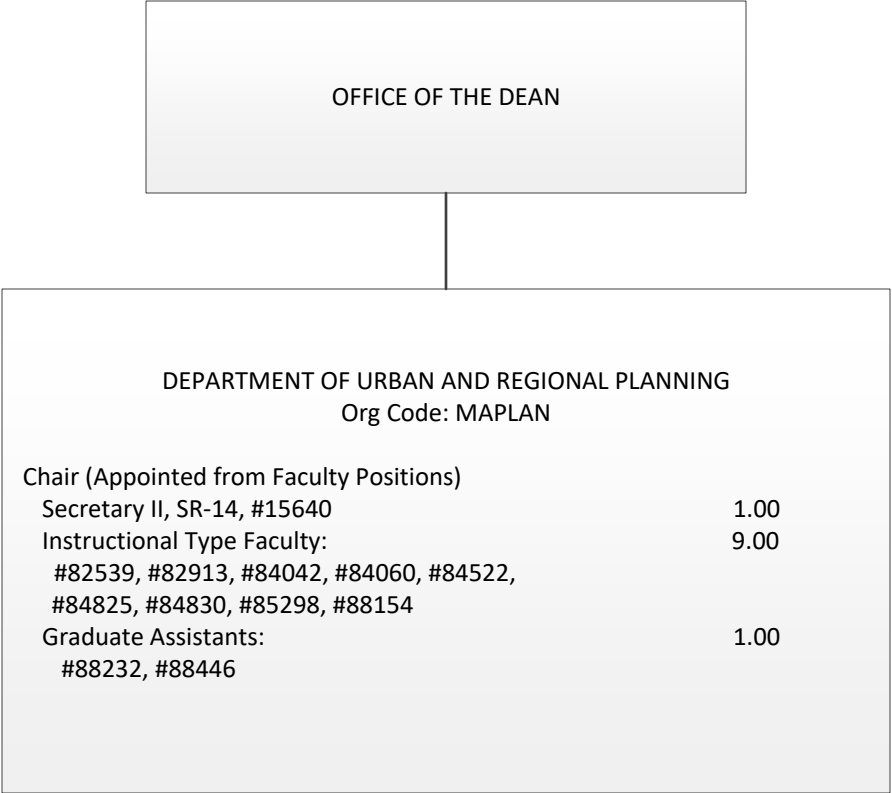


CHART TOTAL:	PERM	TEMP
General Funds:	11.00	--

STATE OF HAWAII
 UNIVERSITY OF HAWAII
 UNIVERSITY OF HAWAII AT MANOA
 OFFICE OF THE PROVOST
 COLLEGE OF SOCIAL SCIENCES
**DEPARTMENT OF WOMEN, GENDER, AND SEXUALITY
 STUDIES**
 ORGANIZATIONAL CHART
 CHART IV-K

