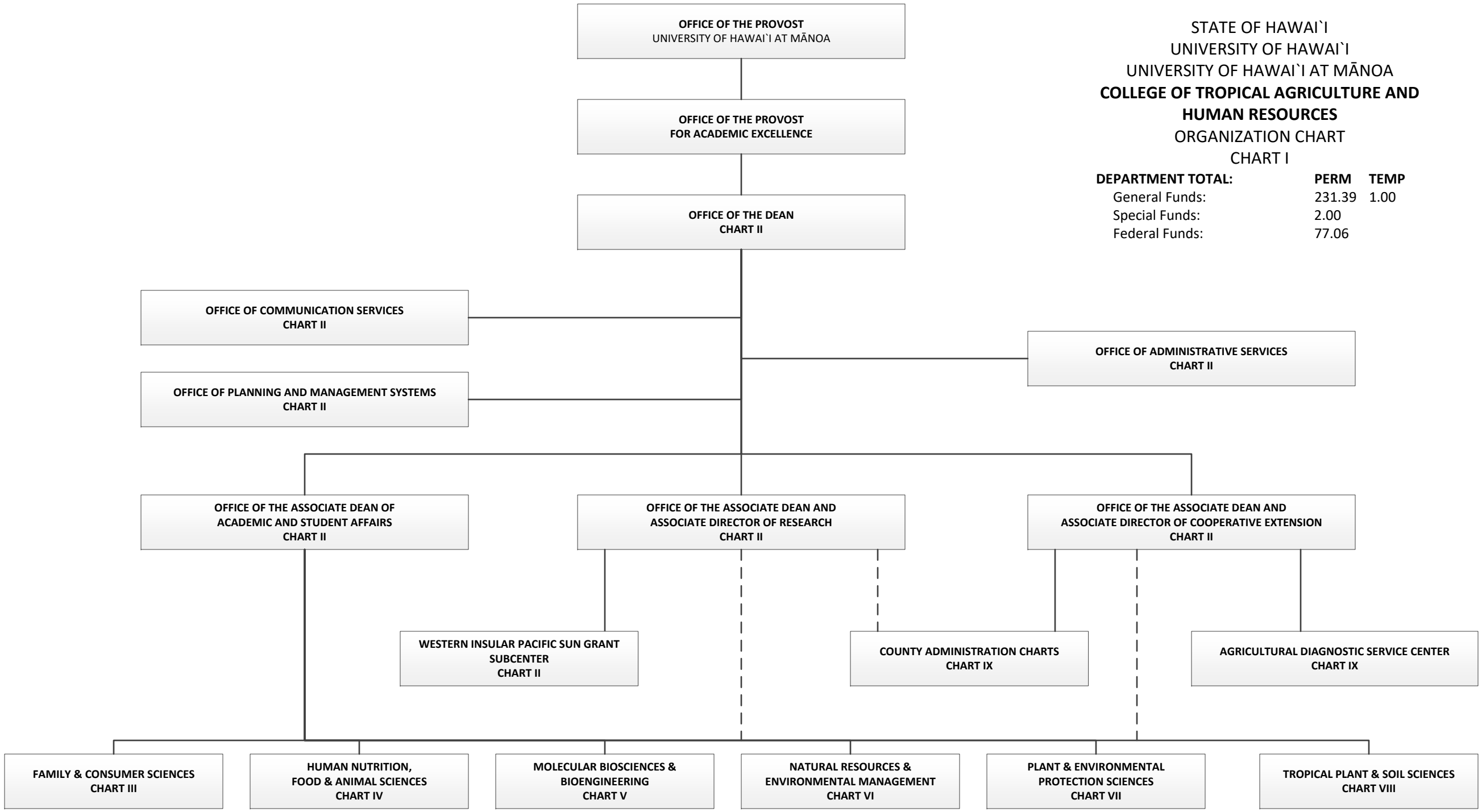


CHART UPDATED
DATE: July 1, 2023

STATE OF HAWAI'I
 UNIVERSITY OF HAWAI'I
 UNIVERSITY OF HAWAI'I AT MĀNOA
**COLLEGE OF TROPICAL AGRICULTURE AND
 HUMAN RESOURCES**
 ORGANIZATION CHART
 CHART I

DEPARTMENT TOTAL:	PERM	TEMP
General Funds:	231.39	1.00
Special Funds:	2.00	
Federal Funds:	77.06	



STATE OF HAWAI`I
 UNIVERSITY OF HAWAI`I
 UNIVERSITY OF HAWAI`I AT MĀNOA
 COLLEGE OF TROPICAL AGRICULTURE AND
 HUMAN RESOURCES
 ORGANIZATION CHART

OFFICE OF THE DEAN
CHART II

OFFICE OF THE VICE CHANCELLOR FOR ACADEMIC AFFAIRS

OFFICE OF THE DEAN
Org Code: MADNTR
 Dean, #89020 1.00
 Secretary IV, SR-18, #21484 1.00
 Admin & Fiscal Support Specialist, PBA, #78324 1.00

OFFICE OF COMMUNICATION SERVICES
Org Code: MACSTR
 Public Information Specialist, PBB, #81470 1.00
 Media Design & Production, PBB, #78721 1.00
 Office Assistant IV, SR-10, #18008 1.00

OFFICE OF PLANNING AND MANAGEMENT SYSTEMS
Org Code: MAPMTR
 Program Manager, PBC, #80797 1.00
 IT Manager, PBC, #80939 1.00
 IT Specialist, PBB, #81362, #81711 2.00
 IT Specialist, PBA, #77925, #81954 2.00

OFFICE OF ADMINISTRATIVE SERVICES
Org Code: MAADTR
 Director, #89022 1.00
Fiscal
 Fiscal Manager, PBC, #81677 1.00
 Fiscal Specialist, PBB, #77924, #78719, #78812, #79084, #79085, #80249 6.00
 Admin & Fiscal Support Specialist, PBA, #80000, #80295, #80310, 3.00
Human Resources
 Human Resources Manager, PBB, #80949 1.00
 Human Resources Specialist, PBB, #80212 1.00
 Human Resources Specialist, PBA, #81498 1.00

OFFICE OF THE ASSOCIATE DEAN OF ACADEMIC AND STUDENT AFFAIRS
Org Code: MAAATR
 Associate Dean of Academic and Student Affairs, #89047 1.00
 Admin & Fiscal Supp Sp, PBA, #78720 1.00
 Educational Specialist, PBB, #80320 1.00
 Educational Specialist, PBB, #80586 1.00
 Student Services Specialist, PBB, #81694 1.00
 Academic Advisor, PBB, #80293, #80385, #80391 3.00
 Academic Support Specialist, PBA, #79587 1.00
 Admin & Fiscal Support Specialist, PBB #81827 1.00

OFFICE OF THE ASSOCIATE DEAN AND ASSOCIATE DIRECTOR OF RESEARCH
Org Code: MARSTR
 Associate Dean of Research, #89124 1.00
 Secretary III, SR-16, #00425 1.00
 Budget Analyst, PBB, #80210 1.00
 Program Specialist, PBB, #79548 1.00
 Environ & Health Safety Specialist, PBB, #80980 1.00

OFFICE OF THE ASSOCIATE DEAN AND ASSOCIATE DIRECTOR OF COOPERATIVE EXTENSION
Org Code: MAEXTR
 Associate Dean of Academic Affairs, #89069 1.00
 Secretary III, SR-16, #00789 1.00

WESTERN INSULAR PACIFIC SUN GRANT
Org Code: MAIPSG
 Director, (appointment from CTAHR faculty)

Federal Positions
 Editor, PBB, #81391 1.00 (N)
 Fiscal Specialist, PBB, #80323 1.00 (N)
 Instructional Type Faculty, #84910 1.00 (N)

CHART TOTAL:
 General Funds: PERM 43.00 TEMP --
 Federal Funds: PERM 3.00 TEMP --

**OFFICE OF THE ASSOCIATE DEAN FOR
 ACADEMIC AND STUDENT AFFAIRS**

**DEPARTMENT OF FAMILY AND CONSUMER SCIENCES
 CHART III**

DEPARTMENT OF FAMILY AND CONSUMER SCIENCES
Org Code: MAFCS

Chairperson (Appointment from among faculty positions)
 Secretary II, SR-14, #22849 1.00
 Instr & Student Support Specialist, PBA, #80784 1.00
 Administrative & Fiscal Support Specialist, PBA, #78061 1.00

Faculty Positions 16.00

Oahu
 Instructional Faculty:
 #82094, #82866, #82869, #83553, #83690, #83765,
 #83816, #84316, #84496, #86034, #86066, #86274

Agent Type Faculty:
 #82505

Maui
 Agent Type Faculty:
 #84120, #84147

Hawaii
 Agent Type Faculty:
 #82313

4-H OFFICE
Org Code: MA4H

Specialist Type Faculty: 1.00
 #84665

CENTER ON THE FAMILY
Org Code: MACOF

Faculty Position 6.00
 Specialist, #85550
 Specialist Type Faculty:
 #82181, #82238, #84325, #84477
 Research Type Faculty:
 #84585
 Secretary II, SR-14, #46186 1.00

Federal Positions

Graduate Assistants
 #88134, #88219, #88410, #88565, #88576 2.50 (N)

Faculty
 #82074, 83525, #83968, #84145,
 #84685, #85421 6.00 (N)

*Abolished positions: #84610, #84662, #85476 3.00 (N)

CHART TOTAL:		
General Funds:	27.00	--
Federal Funds:	11.50	

STATE OF HAWAII
 UNIVERSITY OF HAWAII
 UNIVERSITY OF HAWAII AT MĀNOA
 COLLEGE OF TROPICAL AGRICULTURE AND
 HUMAN RESOURCES
 ORGANIZATION CHART

**DEPARTMENT OF HUMAN NUTRITION, FOOD AND
 ANIMAL SCIENCES**
 CHART IV

OFFICE OF THE ASSOCIATE DEAN FOR
 ACADEMIC AND STUDENT AFFAIRS

DEPARTMENT OF HUMAN NUTRITION, FOOD AND ANIMAL SCIENCES	
Org Code: MAHFAS	
Chairperson (Appointed from among faculty position)	
Secretary II, SR-14, #00400	1.00
Office Assistant III, SR-08, #900569	1.00
Administrative & Fiscal Support Specialist, PBA, #80386	1.00
Research Associate, PBB, #80410	1.00
Research Associate, PBA, #77092	1.00
Graduate Assistants	
#85388T	0.50T
Faculty Positions	23.00
Oahu	
Specialist Type Faculty:	
#82107, #84640, #85495	
Research Type Faculty:	
#83633, #85576	
Instructional Faculty:	
#82175, #82248, #83012, #83267, #83811, #84306, #84323	
#84449, #84454, #84512, #84919, #84920, #85556, #87552	
Maui	
Agent Type Faculty:	
#82639, #85408	
Hawaii	
Specialist Type Faculty:	
#82090	
Agent Type Faculty:	
#83152	

Federal Positions	
Graduate Assistants	
#86249, #88088, #88165, #88303, #88594, #88643	3.00 (N)
Faculty	
#82363, #82865, #83017, #83728, #84158, #84276, #84297, #84439	8.00 (N)
* Abolished positions: #84163	1.00 (N)

CHART TOTAL:	PERM	TEMP
General Funds:	28.00	0.50T
Federal Funds:	12.00	

STATE OF HAWAI`I
 UNIVERSITY OF HAWAI`I
 UNIVERSITY OF HAWAI`I AT MĀNOA
 COLLEGE OF TROPICAL AGRICULTURE AND
 HUMAN RESOURCES
 ORGANIZATION CHART

**DEPARTMENT OF MOLECULAR BIOSCIENCES AND
 BIOENGINEERING**
 CHART V

OFFICE OF THE ASSOCIATE DEAN FOR
 ACADEMIC AND STUDENT AFFAIRS

DEPARTMENT OF MOLECULAR BIOSCIENCES AND BIOENGINEERING	
Org Code: MAMBBE	
Chairperson (Appointed from among faculty position)	
Secretary II, SR-14, #15509	1.00
Administrative & Fiscal Support Specialist, PBA, #78046	1.00
Research Associate, PBB, #80409, #81325	2.00
Faculty Positions	12.00
Oahu	
Specialist Type Faculty:	
#85555	
Research Type Faculty:	
#87523	
Instructional Faculty:	
#82027, #82919, #83034, #83343, #83767,	
#84114, #84193, #84600, #84617, #85418	

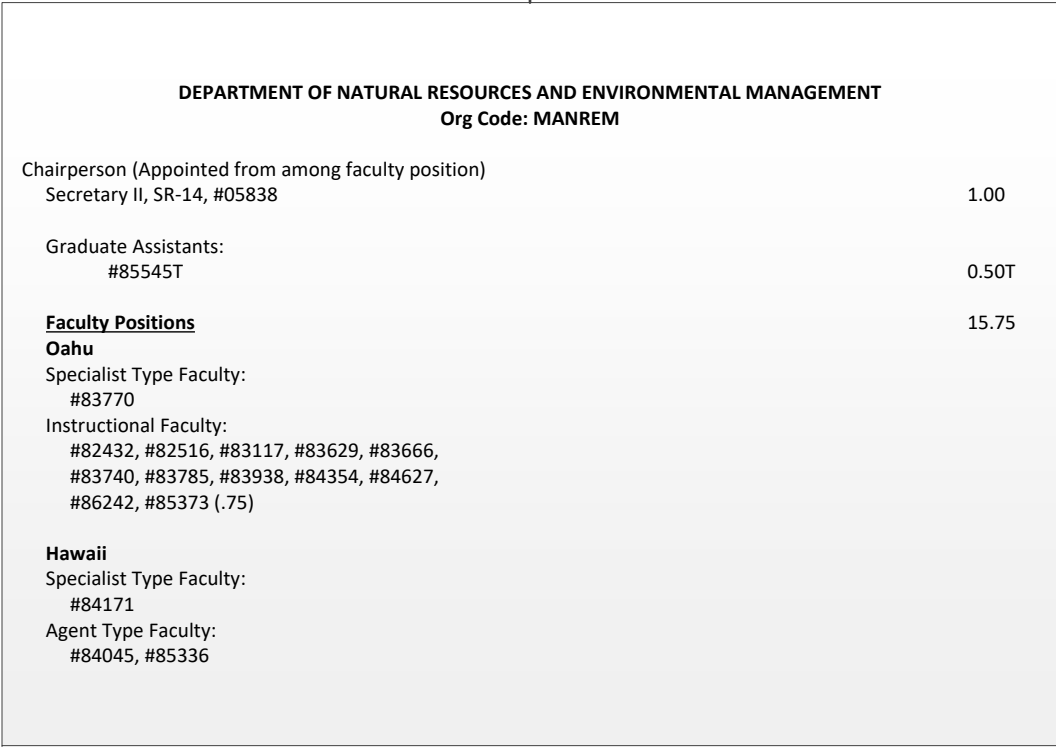
Federal Positions		
Graduate Assistants		
#88486, #88494, #88509, #88630	2.00 (N)	
Faculty		
#82224, #82848, #85151	3.00 (N)	

CHART TOTAL:	PERM	TEMP
General Funds:	16.00	--
Federal Funds:	5.00	

STATE OF HAWAI`I
 UNIVERSITY OF HAWAI`I
 UNIVERSITY OF HAWAI`I AT MĀNOA
 COLLEGE OF TROPICAL AGRICULTURE AND
 HUMAN RESOURCES
 ORGANIZATION CHART

DEPARTMENT OF NATURAL RESOURCES AND ENVIRONMENTAL MANAGEMENT
CHART VI

OFFICE OF THE ASSOCIATE DEAN FOR
 ACADEMIC AND STUDENT AFFAIRS



Federal Positions	
Graduate Assistants	
#86220, #88028, #88181, #88431	2.00 (N)
Faculty	
#82058, #83459, #83824, #83848, #84488, #84668	6.00 (N)

CHART TOTAL:	PERM	TEMP
General Funds:	16.75	0.50T
Federal Funds:	8.00	

CHART UPDATED
DATE: July 1, 2023

**OFFICE OF THE ASSOCIATE DEAN FOR
 ACADEMIC AND STUDENT AFFAIRS**

STATE OF HAWAI`I
 UNIVERSITY OF HAWAI`I
 UNIVERSITY OF HAWAI`I AT MĀNOA
 COLLEGE OF TROPICAL AGRICULTURE AND
 HUMAN RESOURCES
 ORGANIZATION CHART

DEPARTMENT OF PLANT AND ENVIRONMENTAL PROTECTION SCIENCES	
Org Code: MAPEPS	
Chairperson (Appointed from among faculty position)	1.00
Secretary II, SR-14, #07477	1.00
Office Assistant III, SR-08, #794	1.00
Administrative & Fiscal Support Specialist, PBA, #77864	1.00
Research Associate, PBB, #80388, #81311	2.00
Research Associate, PBA, #81313	1.00
Agr Research Technician IV, SR-14, #24270	1.00
Faculty Positions	14.00
Oahu	
Specialist Type Faculty:	
#83320, #84321, #84911	
Research Type Faculty:	
#82047, #82139, #83067, #83184, #83742, #84041	
Instructional Faculty:	
#82976, #83882, #84138, #85510	
Kauai	
Agent Type Faculty:	
#85410	

**DEPARTMENT OF PLANT AND ENVIRONMENTAL
 PROTECTION SCIENCES**
 CHART VII

Federal Positions	
Graduate Assistants	
#84932, #88241,	1.00 (N)
Faculty	
#82196, #83462, #84006, #84489, #85505, #85530, #85538, #85547,	8.00 (N)
Research Associate	
#81178	1.00 (N)
Agr Research Tech III, SR-11, #24269	1.00 (N)
*Abolished positions: #82722, #85526, #85551 (.56),	2.56 (N)

* Abolished position #85551 MOF A (0.44)

CHART TOTAL:	PERM	TEMP
General Funds:	21.44	--
Federal Funds:	13.56	

OFFICE OF THE ASSOCIATE DEAN FOR
 ACADEMIC AND STUDENT AFFAIRS

DEPARTMENT OF TROPICAL PLANT AND SOIL SCIENCES
 CHART VIII

DEPARTMENT OF TROPICAL PLANT AND SOIL SCIENCES
 Org Code: MATPSS

Chairperson (Appointed from among faculty position)	
Secretary II, SR-14, #00793	1.00
Administrative & Fiscal Support Specialist, PBA, #77795	1.00
Agr Research Technician V, SR-16, #11019	1.00
Agr Research Technician IV, SR-14 *	
Educational Specialist, PBA, #81739	1.00
<u>Faculty Positions</u>	30.00
Oahu	
Specialist Type Faculty:	
#82598, #83159, #83304, #83388	
Research Type Faculty:	
#82023, #82464, #82699, #83260, #83515, #84420,	
#84481, #85877, #86275	
Instructional Type Faculty:	
#83286, #84046	
Agent Type Faculty:	
#84070, #85435, #85460, #85528	
Maui	
Agent Type Faculty:	
#85392, #85404, #85423, #85459, #85477,	
#85531	
Hawaii	
Agent Type Faculty:	
#82485, #82951, #84648	
Kauai	
Agent Type Faculty:	
#85371, #85387	

<u>Federal Positions</u>	
Graduate Assistants	
#88171, #88423	1.00 (N)
Faculty	
#82747, #82881, #82985, #84075,	8.00 (N)
#84501, #84916, #85440, #87584	
Agr Research Tech IV, SR-14, #15512	1.00 (N)
Office Assistant IV, SR-10, #399	1.00 (N)
Research Support, PBB, #80270	1.00 (N)
*Abolished positions: #82687, #82704, #82758,	5.00 (N)
#83054, #85778	

CHART TOTAL:	PERM	TEMP
General Funds:	34.20	--
Federal Funds:	17.00	

* To be established
 ** Abolished position #85563 (0.20)

STATE OF HAWAI`I
 UNIVERSITY OF HAWAI`I
 UNIVERSITY OF HAWAI`I AT MĀNOA
 COLLEGE OF TROPICAL AGRICULTURE AND
 HUMAN RESOURCES
 ORGANIZATION CHART

COUNTY ADMINISTRATION
 CHART IX

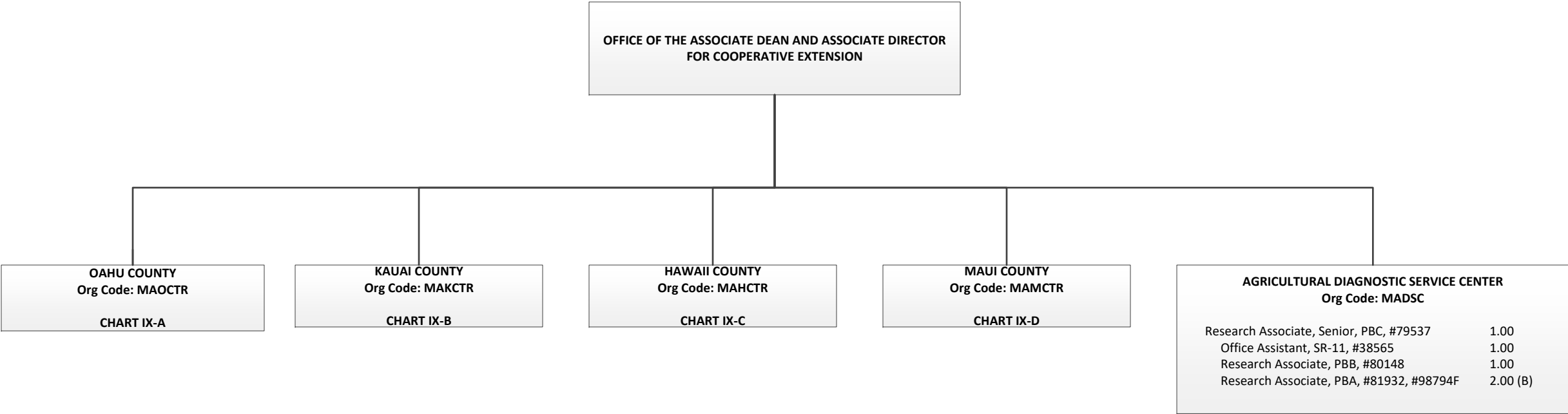


CHART TOTAL:	PERM	TEMP
General Funds:	3.00	--
Special Funds:	2.00	
Federal Funds:	--	

AGRICULTURAL DIAGNOSTIC SERVICE CENTER Org Code: MADSC	
Research Associate, Senior, PBC, #79537	1.00
Office Assistant, SR-11, #38565	1.00
Research Associate, PBB, #80148	1.00
Research Associate, PBA, #81932, #98794F	2.00 (B)

STATE OF HAWAI`I
 UNIVERSITY OF HAWAI`I
 UNIVERSITY OF HAWAI`I AT MĀNOA
 COLLEGE OF TROPICAL AGRICULTURE AND
 HUMAN RESOURCES
 ORGANIZATION CHART

OAHU COUNTY
 CHART IX-A

OFFICE OF THE ASSOCIATE DEAN AND ASSOCIATE DIRECTOR FOR COOPERATIVE
 EXTENSION

OAHU COUNTY	
Org Code: MAOCTR	
County Administrator, #89431	1.00
HONOLULU	
Secretary II *	
WAHIAWA	
Office Assistant IV, SR-10, #00806	1.00
URBAN GARDEN CENTER	
Office Assistant IV, SR-10, #00802	1.00
POAMOHO EXPERIMENT STATION	
Agr Res Tech III, SR-11, #15515	1.00
WAIMANALO EXPERIMENT STATION	
Agr Res Tech VI, SR-18, #007479	1.00
Agr Res Tech III, SR-11, #434, #4484	2.00
Agr Res Tech IV, SR-14, #433, #09077, #11021	3.00
Agr Res Tech V, SR-16, #11024	1.00

Federal Positions	
Agr Res Tech V, SR-16, #396	1.00 (N)
Equipment Operator III, BC-09, #419	1.00 (N)
Secretary II, SR-14, #790	1.00 (N)
Bulldozer Operator II, BC-10, #4480	1.00 (N)

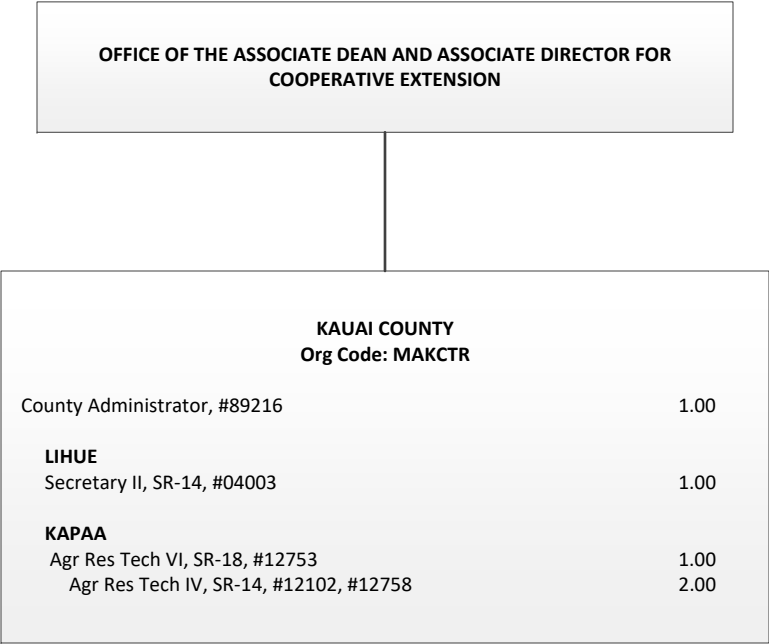
* To be established

CHART TOTAL:	PERM	TEMP
General Funds:	11.00	--
Federal Funds:	4.00	

CHART UPDATED
DATE: July 1, 2023

STATE OF HAWAI`I
 UNIVERSITY OF HAWAI`I
 UNIVERSITY OF HAWAI`I AT MĀNOA
 COLLEGE OF TROPICAL AGRICULTURE AND
 HUMAN RESOURCES
 ORGANIZATION CHART

KAUAI COUNTY
 CHART IX-B



Federal Positions	
Agr Res Tech III, SR-11, #12761	1.00 (N)

CHART TOTAL:	PERM	TEMP
General Funds:	5.00	--
Federal Funds:	1.00	

**OFFICE OF THE ASSOCIATE DEAN AND ASSOCIATE DIRECTOR FOR COOPERATIVE
EXTENSION**

STATE OF HAWAI`I
UNIVERSITY OF HAWAI`I
UNIVERSITY OF HAWAI`I AT MĀNOA
COLLEGE OF TROPICAL AGRICULTURE AND
HUMAN RESOURCES
ORGANIZATION CHART

HAWAII COUNTY	
Org Code: MAHCTR	
County Administrator, #89213	1.00
Operations Coordinator, PBB	
KOMOHANA	
Secretary II, SR-14, #13871	1.00
Office Assistant III, SR-08, #00791	1.00
KONA	
Office Assistant IV, SR-10, #900583	1.00
KAMUELA	
Office Assistant IV, SR-10, #00799	1.00
EAST HAWAII	
Agr Res Tech VI, SR-18, #12099	1.00
WAIAKEA	
Agr Res Tech V, SR-16, #14166	1.00
Agr Res Tech III, SR-11, #15497	1.00
VOLCANO	
Agr Res Tech V, SR-16, #13206	1.00
MALAMA-KI	
WEST HAWAII	
Agr Res Tech VI, SR-18, #13530	1.00
MEALANI	
Agr Res Tech V, SR-16, #12094	1.00
Agr Res Tech IV, SR-14, #12100	1.00
Agr Res Tech III, SR-11, #397, #44867, #44868	3.00
HAMAKUA	
KONA	
Agr Res Tech V, SR-16, #00409	1.00
Agr Res Tech III, SR-11, #22912	1.00

1/

HAWAII COUNTY
CHART IX-C

CHART TOTAL:	PERM	TEMP
General Funds:	17.00	--
Federal Funds:	--	--

1/ Operations Coordinator in Hawai'i County Technical Support abolished

STATE OF HAWAI`I
 UNIVERSITY OF HAWAI`I
 UNIVERSITY OF HAWAI`I AT MĀNOA
 COLLEGE OF TROPICAL AGRICULTURE AND
 HUMAN RESOURCES
 ORGANIZATION CHART

MAUI COUNTY
 CHART IX-D

**OFFICE OF THE ASSOCIATE DEAN AND ASSOCIATE DIRECTOR FOR
 COOPERATIVE EXTENSION**

MAUI COUNTY	
Org Code: MAMCTR	
County Administrator, #89215	1.00
KAHULUI	
Secretary II, SR-14, #00792	1.00
KULA	
Secretary II, SR-14, #13714	1.00
Agr Res Tech VI, SR-18 *	
Agr Res Tech V, SR-16, #12901	1.00
Agr Res Tech IV, SR-14, #436	1.00
Agr Res Tech III, SR-11, #00404, #00406, #12900	3.00
MOLOKAI	
Agr Res Tech IV, SR-14, #36749	1.00

Federal Positions	
Agr Res Tech VI, SR-18, #415	1.00 (N)
Agr Res Tech IV, SR-14, #12898	1.00 (N)

CHART TOTAL:	PERM	TEMP
General Funds:	9.00	--
Federal Funds:	2.00	