

STATE OF HAWAII
UNIVERSITY OF HAWAII
UNIVERSITY OF HAWAII AT MANOA
OFFICE OF THE PROVOST
UNIVERSITY OF HAWAII PRESS
ORGANIZATIONAL CHART
CHART I

DEPARTMENT TOTAL:	PERM	TEMP
General Funds:	8.00	--
Revolving Funds (W):	6.00	--

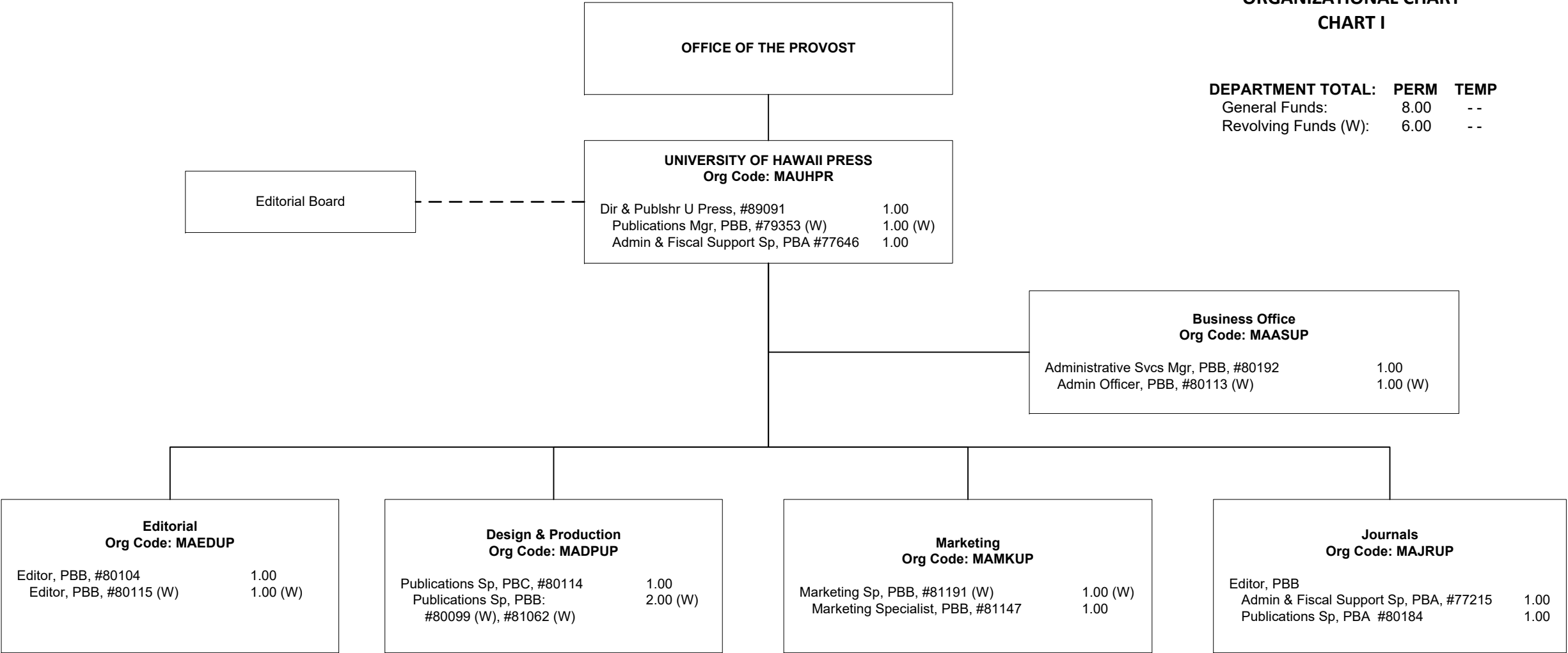


CHART TOTAL:	PERM	TEMP
General Funds:	8.00	--
Revolving Funds (W):	6.00	--