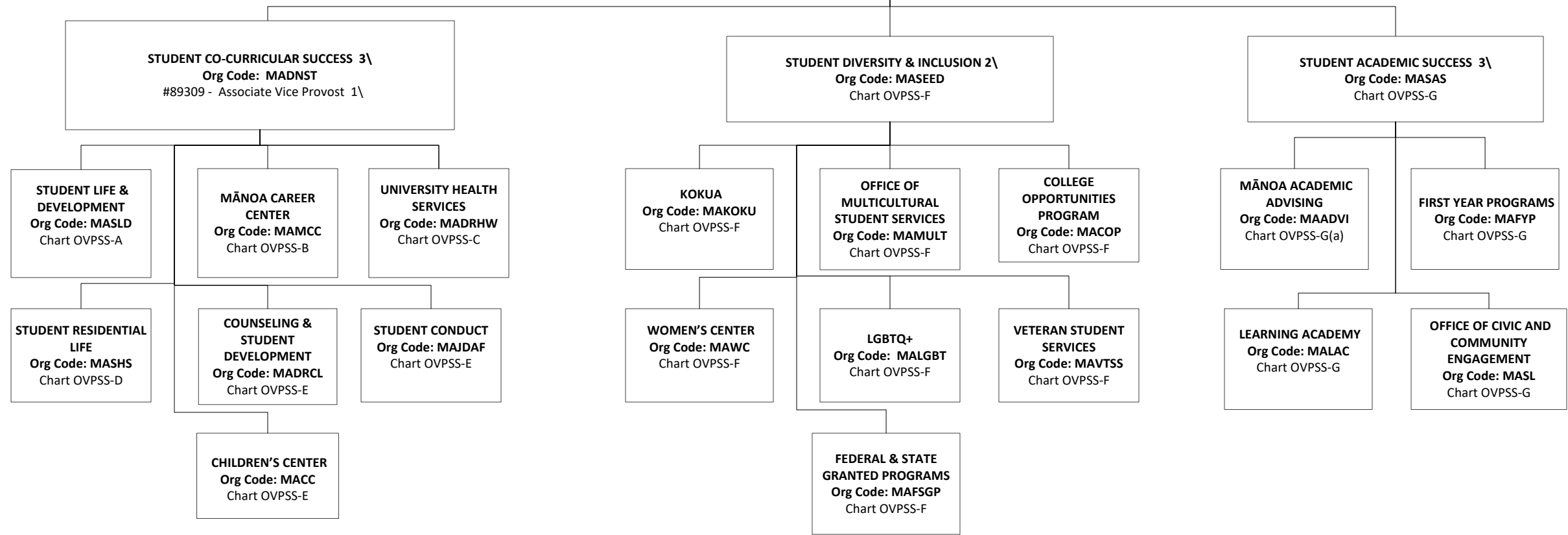
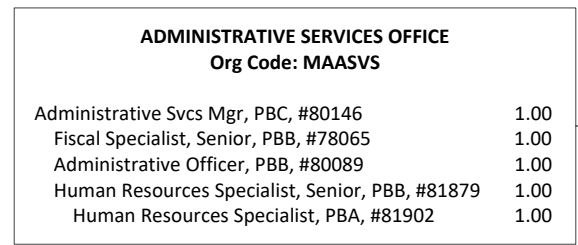
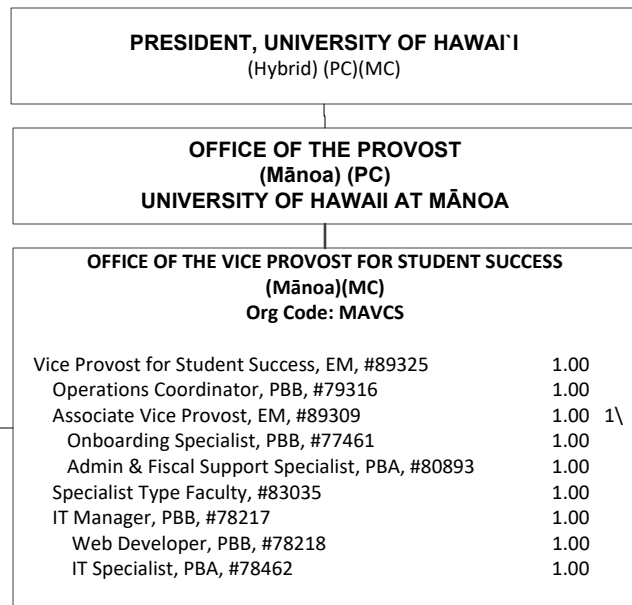


STATE OF HAWAII  
UNIVERSITY OF HAWAII  
UNIVERSITY OF HAWAII AT MĀNOA  
**OFFICE OF THE VICE PROVOST  
FOR STUDENT SUCCESS**

POSITION ORGANIZATION CHART  
(OVPSS)

PC=President's Cabinet  
MC=Mānoa Cabinet

DEPARTMENT TOTAL:	PERM	TEMP
General Funds:	116.00	3.00
Special Funds (B):	99.00	--
Revolving Funds (W):	14.00	--

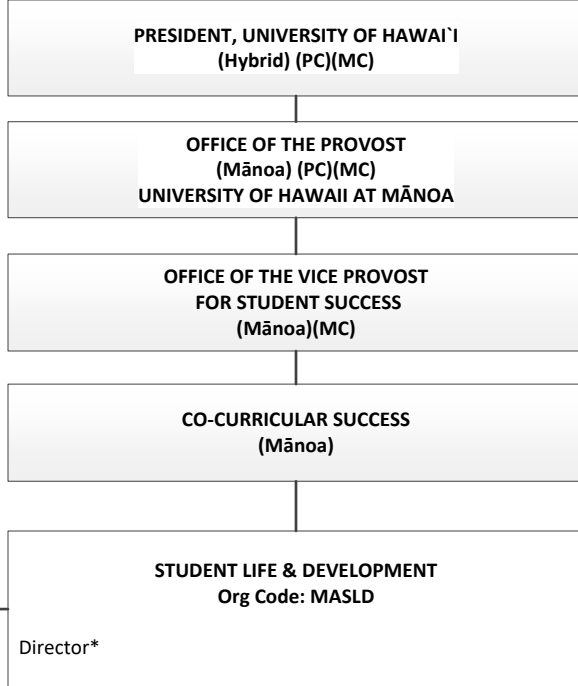


1\ #89309 in MAVCS also serves as Dean of Students and oversees Student Co-Curricular Success.  
2\ Collaborate with other equity related programs at the campus level.  
3\ Positions to be established within Student Success when budget permits for Onboarding and Commencement functions.

CHART TOTAL:	PERM	TEMP
General Funds:	14.00	--

STATE OF HAWAI'I  
 UNIVERSITY OF HAWAI'I  
 UNIVERSITY OF HAWAI'I AT MĀNOA  
 OFFICE OF THE VICE PROVOST FOR  
 STUDENT SUCCESS  
 CO-CURRICULAR SUCCESS  
**STUDENT LIFE & DEVELOPMENT**  
 POSITION ORGANIZATION CHART (OVPSS-A)

PC=President's Cabinet  
 MC=Mānoa Cabinet



**STUDENT LIFE BUSINESS SERVICES**  
 Org Code: MABSSL

Student Services Specialist, PBB, #79129	1.00
Administrative Svcs Manager, PBB, #80163 (B)	1.00 (B)
Administrative Officer, PBB, #79408 (B)	1.00 (B)
Administrative & Fiscal Support Specialist, PBA: #78450 (B), #80649 (B)	2.00 (B)
Student Services Specialist, PBB, #80660 (B)	1.00 (B)
Bldg Maintenance Worker II, WS09, #28597 (B)	1.00 (B)
Bldg & Grounds Utility Worker, BC05: #44085 (B), #44109 (B), #45379 (B)	3.00 (B)
Student Services Specialist, PBA, #78831 (B)	1.00 (B)
Janitor III, WS02, #44089 (B)	1.00 (B)
Janitor II, BC02: #25329 (B), #25392 (B), #46560 (B), #900563 (B), #900564 (B)	5.00 (B)
System Admin, PBB, #79661 (B)	1.00 (B)

**STUDENT EVENTS & CAMPUS LIFE SERVICES**  
 Org Code: MASESL

Specialist Type Faculty, #88328 (B)	1.00 (B)
Specialist Type Faculty, #70084 (W)	1.00 (W)
Student Services Specialist, PBB, #81486 (W)	1.00 (W)
Specialist Type Faculty, #88334 (W)	1.00 (W)
Student Services Specialist, PBB, #78991 (B)	1.00 (B)
Student Services Specialist, PBA, #80631 (B), #80942 (B)	2.00 (B)

**STUDENT INVOLVEMENT & LEADERSHIP DEVELOPMENT PROGRAMS**  
 Org Code: MASISL

Specialist Type Faculty, #83705	1.00
Specialist Type Faculty, #70078	1.00
Student Services Specialist, PBB, #81510 (W)	1.00 (W)

**STUDENT RECREATION SERVICES**  
 Org Code: MASRSL

Specialist Type Faculty*	
Specialist Type Faculty, #83512	1.00
Office Assistant III, SR08, #26460	1.00
Student Services Specialist, PBB, #77071	1.00
Student Services Specialist, PBB, #80025 (B)	1.00 (B)
Student Services Specialist, PBA, #79313 (B)	1.00 (B)

**CHART TOTAL:**

General Funds:	6.00	--
Special Funds (B):	23.00	--
Revolving Funds (W):	4.00	--

\* To be re-established when budget permits

STATE OF HAWAI'I  
 UNIVERSITY OF HAWAI'I  
 UNIVERSITY OF HAWAI'I AT MĀNOA  
 OFFICE OF THE VICE PROVOST FOR  
 STUDENT SUCCESS  
 CO-CURRICULAR SUCCESS  
**MĀNOA CAREER CENTER**

POSITION ORGANIZATION CHART (OVPSS-B)

PC=President's Cabinet  
 MC=Mānoa Cabinet

**PRESIDENT, UNIVERSITY OF HAWAI'I**  
 (Hybrid) (PC)(MC)

**OFFICE OF THE PROVOST**  
 (Mānoa) (PC)(MC)  
 UNIVERSITY OF HAWAII AT MĀNOA

**OFFICE OF THE VICE PROVOST**  
**FOR STUDENT SUCCESS**  
 (Mānoa)(MC)

**CO-CURRICULAR SUCCESS**  
 (Mānoa)

**MĀNOA CAREER CENTER**  
 Org Code: MAMCC

Specialist Type Faculty, #82644	1.00
Student Services Specialist, PBB, #81434	1.00
IT Specialist, PBB, #78476	1.00
IT Specialist, PBA, #78604	1.00

**CAREER SERVICES**  
 Org Code: MACSCD

Specialist Type Faculty: #70072, #82701	2.00
--	------

**COOPERATIVE EDUCATION**  
 Org Code: MACECD

Specialist Type Faculty: #82642, #88325	2.00
--	------

**STUDENT EMPLOYMENT SERVICES**  
 Org Code: MASECD

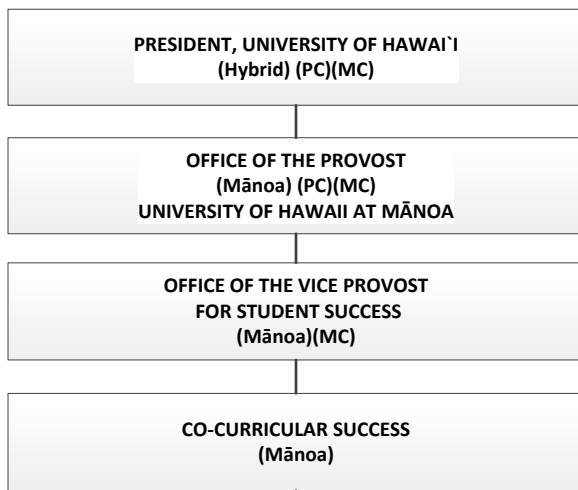
Student Services Specialist, PBB, #81481	1.00
Student Services Specialist, PBA, #78605	1.00

<b>CHART TOTAL:</b>	<b>PERM</b>	<b>TEMP</b>
General Funds:	10.00	--

STATE OF HAWAI'I  
 UNIVERSITY OF HAWAI'I  
 UNIVERSITY OF HAWAI'I AT MĀNOA  
 OFFICE OF THE VICE PROVOST FOR  
 STUDENT SUCCESS  
 CO-CURRICULAR SUCCESS  
**UNIVERSITY HEALTH SERVICES**

POSITION ORGANIZATION CHART (OVPSS-C)

PC=President's Cabinet  
 MC=Mānoa Cabinet



**ADMINISTRATIVE SUPPORT**  
 Org Code: MAASHW

Operations Coordinator, PBB, #80944	1.00
Fiscal Specialist, Senior, PBB, #79646	1.00
Office Assistant IV, SR10, #25410 (W)	1.00 (W)
Admin & Fiscal Support Sp, PBA, #79715	1.00
Admin & Fiscal Support Sp, PBA #96885	1.00 (W)

**UNIVERSITY HEALTH SERVICES**  
 Org Code: MADRHW

Specialist and Director, #82341	1.00
---------------------------------	------

**HEALTH EDUCATION AND PROMOTION**  
 Org Code: MAHPHW

Specialist Type Faculty, #88317	1.00
Specialist Type Faculty, #70079	1.00

**MEDICAL STAFF**  
 Org Code: MAMSHW

Advanced Practice Registered Nurse II, SR28, #41706 (W)	1.00 (W)
Specialist Type Faculty:	2.00 (W)
#83261 (0.50) (W), #83397 (0.50) (W),	
#84576 (0.50) (W), #84576A (0.50) (W)	

**NURSING STAFF**  
 Org Code: MANSHW

Registered Nurse IV, SR22, #10312 (W)	1.00 (W)
Registered Nurse III, SR20:	4.00 (W)
#13615 (W), #13616 (W), #18091 (W),	
#22672 (W)	

**LABORATORY**  
 Org Code: MALBHW

Medical Technologist, PBA, #80671	1.00
-----------------------------------	------

**PHARMACY**  
 Org Code: MAPHHW

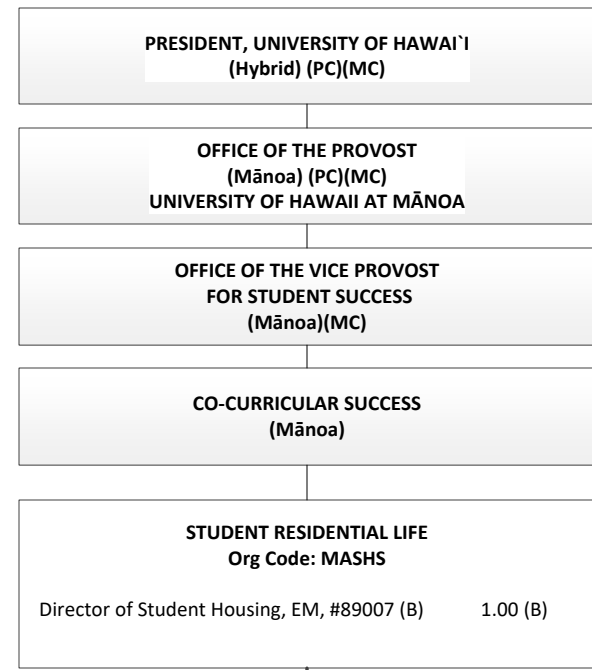
Pharmacist, PBC, #78521 (0.50)	0.50
--------------------------------	------

<b>CHART TOTAL:</b>	<b>PERM</b>	<b>TEMP</b>
General Funds:	7.50	--
Revolving Funds (W):	10.00	--

STATE OF HAWAI'I  
 UNIVERSITY OF HAWAI'I  
 UNIVERSITY OF HAWAI'I AT MĀNOA  
 OFFICE OF THE VICE PROVOST FOR  
 STUDENT SUCCESS  
 CO-CURRICULAR SUCCESS  
**STUDENT RESIDENTIAL LIFE**

POSITION ORGANIZATION CHART (OVPSS-D)

PC=President's Cabinet  
 MC=Mānoa Cabinet



OPERATIONS Org Code: MAOPSH	
Auxiliary & Facilities Services Manager, PBB, #80629 (B)	1.00 (B)
Auxiliary & Facilities Services Officer, PBA, #78141 (B)	1.00 (B)
Auxiliary & Facilities Services Officer, PBA, #81942 (B)	1.00 (B)
Registered Architect, PBB, #77005 (B)	1.00 (B)
MAINTENANCE STAFF:	
Auxiliary & Facilities Services Officer, PBB, #79641 (B)	1.00 (B) 1\
Building Maintenance Supervisor I, F109, #900548 (B)	1.00 (B)
Building Maintenance Worker I, BC09: #13578 (B), #31245 (B), #110585 (B)	3.00 (B) 2\
#900513, #900514	2.00
Plumber I, BC10, #900603 (B)	1.00 (B)
Electrician I, BC10, #900604 (B)	1.00 (B)
CUSTODIAL & GROUNDS STAFF:	
Auxiliary & Facilities Services Officer, #99075F (B)	1.00 (B) 1\
Janitor III, WS02, #900850 (B), #900851 (B)	2.00 (B)
Janitor II, BC02: #900852 (B), #900853 (B), #900854 (B), #900855 (B), #900856 (B), #900857 (B), #900858 (B), #900859 (B), #900860 (B), #900861 (B), #900862 (B), #900863 (B), #900864 (B), #900865 (B), #900866 (B), #900867 (B)	16.00 (B)
Groundskeeper II, WS02, #24251 (B)	1.00 (B)
Groundskeeper I, BC02, #31246 (B)	1.00 (B)
OPERATIONS SUPPORT:	
Environmental & Health Safety Sp, PBA, #81680 (B)	1.00 (B)
General Laborer II, BC-03: #900918 (B), #900919 (B), #900920 (B), #900921 (B), #900922 (B), #900923 (B)	6.00 (B)

ADMINISTRATION Org Code: MAADSH	
Administrative Svcs Mgr, PBB, #81612 (B)	1.00 (B)
FISCAL:	
Fiscal Specialist, Senior, PBB, #80193 (B)	1.00 (B)
Fiscal Specialist, PBB, #77029 (B)	1.00 (B)
Cashier I, SR10, #28336 (B)	1.00 (B)
Fiscal Specialist, PBB, #80298 (B)	1.00 (B)
Office Assistant IV, SR10, #18701 (B)	1.00 (B)
ASSIGNMENTS:	
Administrative Officer, PBB, #79170 (B)	1.00 (B)
Student Services Specialist, PBA, #78732	1.00
Student Services Specialist, PBA: #79330 (B), #79885 (B)	2.00 (B)
CONFERENCES:	
Student Services Specialist, PBB, #80219 (B)	1.00 (B)
PERSONNEL:	
Human Resources Sp, PBB, #81103 (B)	1.00 (B)
Human Resources Sp, PBA, #78729	1.00
INFORMATION TECHNOLOGY:	
IT Specialist, PBB, #78311 (B), #81361 (B)	2.00 (B)
IT Specialist, PBA, #77097 (B)	1.00 (B)

RESIDENTIAL LIFE Org Code: MARLSH	
Residence Life Mgr, PBB, #80630 (B)	1.00 (B)
STUDENT CONDUCT & COMMUNITY STANDARDS:	
Residence Life Specialist, PBB, #81611 (B)	1.00 (B)
Residence Life Specialist, PBA, #80598 (B)	1.00 (B)
RESIDENTIAL AREAS:	
Residence Life Specialist, PBB: #80594 (B), #80597 (B), #80825 (B)	3.00 (B)
Office Assistant III, SR08, #23582 (B)	1.00 (B) 2\
Residence Life Specialist, PBA: #80924 (B), #80764 (B)	2.00 (B)
HALL STAFF:	
Residence Life Specialist, PBA: #78542 (B), #78728 (B), #78959 (B), #78960 (B), #78961 (B), #78962 (B), #80595 (B)	7.00 (B)
#78730, #78731	2.00

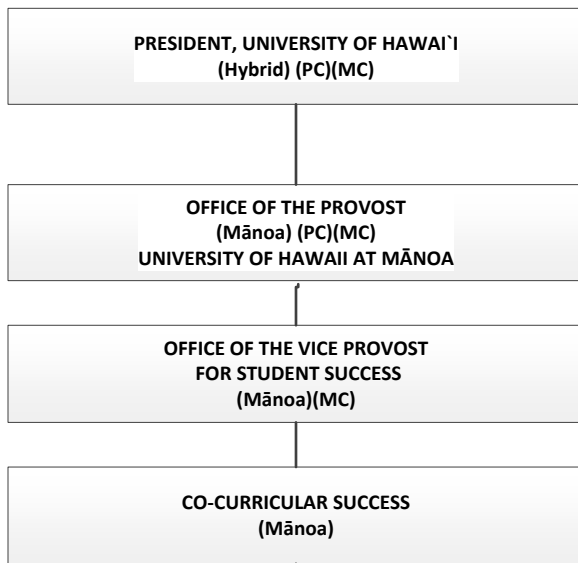
1\ Pending establishment: Auxiliary & Facilities Services Officer, #79641, #99075F  
 2\ Abolished; count retained: Building Maintenance Worker I, #31242 & Office Assistant III, #28545, 2.00 (B)

CHART TOTAL:	PERM	TEMP
General Funds:	6.00	--
Special Funds (B):	72.00	--

STATE OF HAWAII  
 UNIVERSITY OF HAWAII  
 UNIVERSITY OF HAWAII AT MĀNOA  
 OFFICE OF THE VICE PROVOST FOR  
 STUDENT SUCCESS  
 CO-CURRICULAR SUCCESS  
**COUNSELING & STUDENT DEVELOPMENT**  
**STUDENT CONDUCT**  
**CHILDREN'S CENTER**

POSITION ORGANIZATION CHART (OVPSS-E)

PC=President's Cabinet  
 MC=Mānoa Cabinet



**COUNSELING & STUDENT DEVELOPMENT**  
 Org Code: MADRCL

Specialist and Director, #83151	1.00
Student Services Specialist, PBB, #78966	1.00

**STUDENT CONDUCT**  
 Org Code: MAJDAF

Director of Student Affairs (Judicial), EM, #89485	1.00
Student Services Specialist, PBB, #78530	1.00
Student Services Specialist, PBA, #77691	1.00

**CHILDREN'S CENTER**  
 Org Code: MACC

Child Care Site Director, PBC, #80029	1.00
Fiscal Specialist, PBB, #80739 (B)	1.00 (B)
Educational Associate, PBB, #80232	1.00
Child Care Cntr Teacher, PBB: #80588 (B)	1.00 (B)
#80234T, #80424T, #80455T	3.00 T
Child Care Cntr Teacher, PBA: #78917, #80109, #80233, #80881	4.00
#80541 (B), #80611 (B)	2.00 (B)

**TESTING**  
 Org Code: MATECL

Student Services Specialist, PBB, #80632	1.00
--	------

**COUNSELING SERVICES**  
 Org Code: MACLCL

Specialist Type Faculty:	5.50
#70077, #82698, #84139, #88146, #70081 (0.50), #70082 (0.50), #82048 (0.50)	

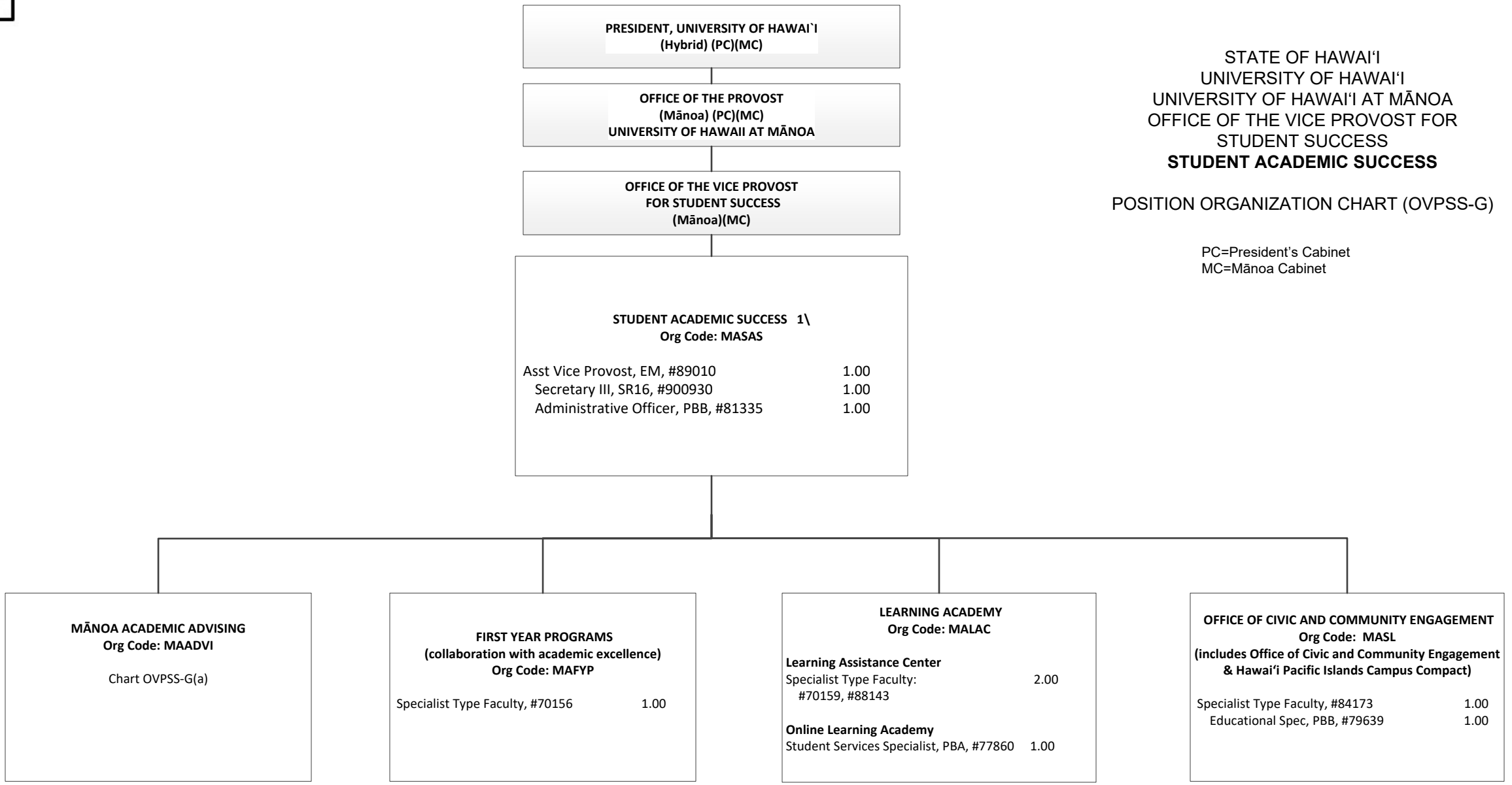
<b>CHART TOTAL:</b>	<b>PERM</b>	<b>TEMP</b>
General Funds:	17.50	3.00
Special Funds (B):	4.00	--



**CHART UPDATED**  
**DATE: July 1, 2023**

STATE OF HAWAI'I  
 UNIVERSITY OF HAWAI'I  
 UNIVERSITY OF HAWAI'I AT MĀNOA  
 OFFICE OF THE VICE PROVOST FOR  
 STUDENT SUCCESS  
**STUDENT ACADEMIC SUCCESS**  
 POSITION ORGANIZATION CHART (OVPSS-G)

PC=President's Cabinet  
 MC=Mānoa Cabinet



**CHART TOTAL:**                      **PERM**    **TEMP**  
 General Funds:                      9.00       --

1\ Positions to be established within Student Success when budget permits for Onboarding and Commencement functions.



STATE OF HAWAI'I  
 UNIVERSITY OF HAWAI'I  
 UNIVERSITY OF HAWAI'I AT MĀNOA  
 OFFICE OF THE VICE PROVOST FOR  
 STUDENT SUCCESS  
**STUDENT ACADEMIC SUCCESS**  
 POSITION ORGANIZATION CHART (OVPSS-G(a))

PC=President's Cabinet  
 MC=Mānoa Cabinet

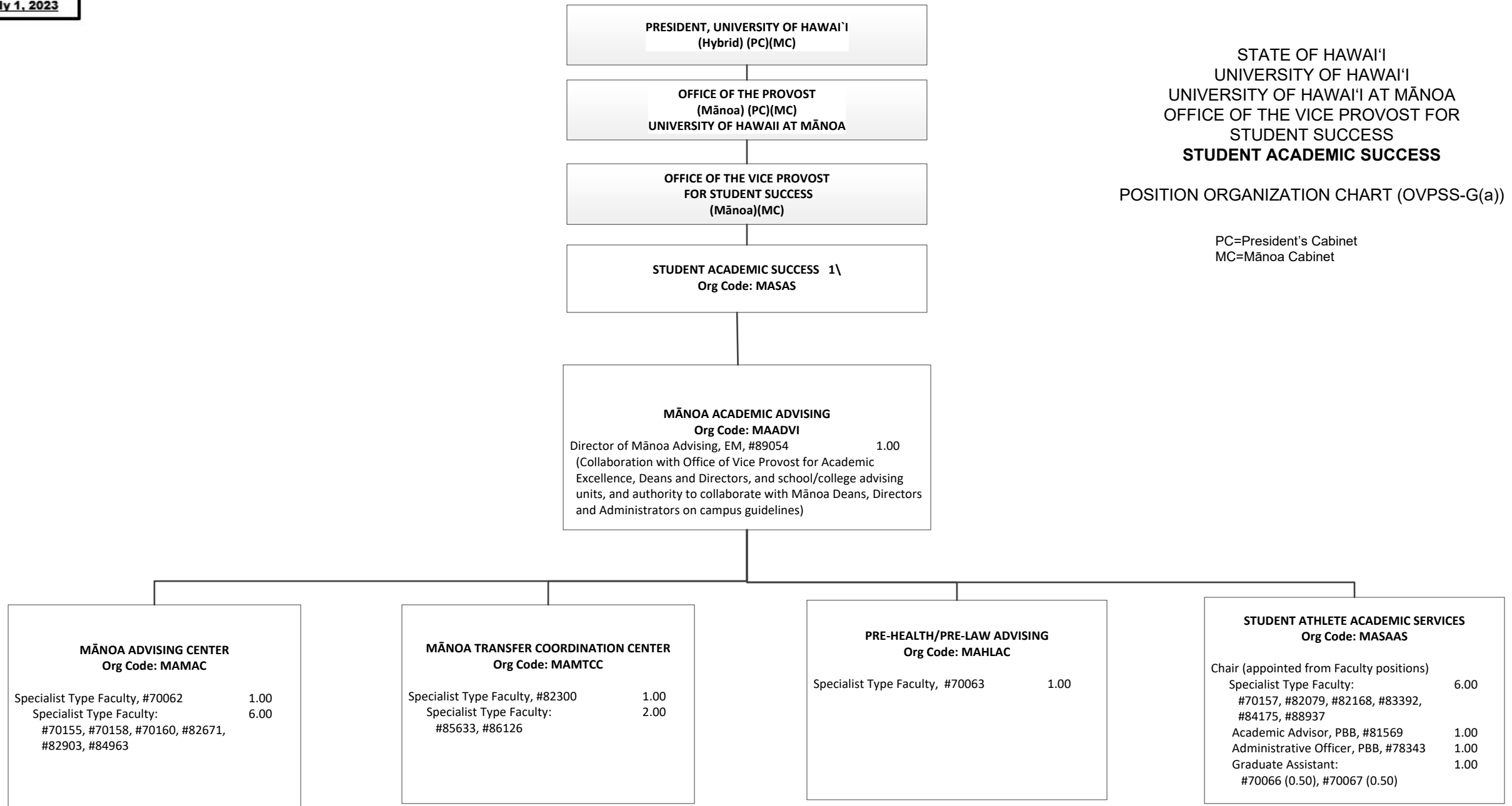


CHART TOTAL:	PERM	TEMP
General Funds:	21.00	--

1\ Positions to be established within Student Success when budget permits for Onboarding and Commencement functions.