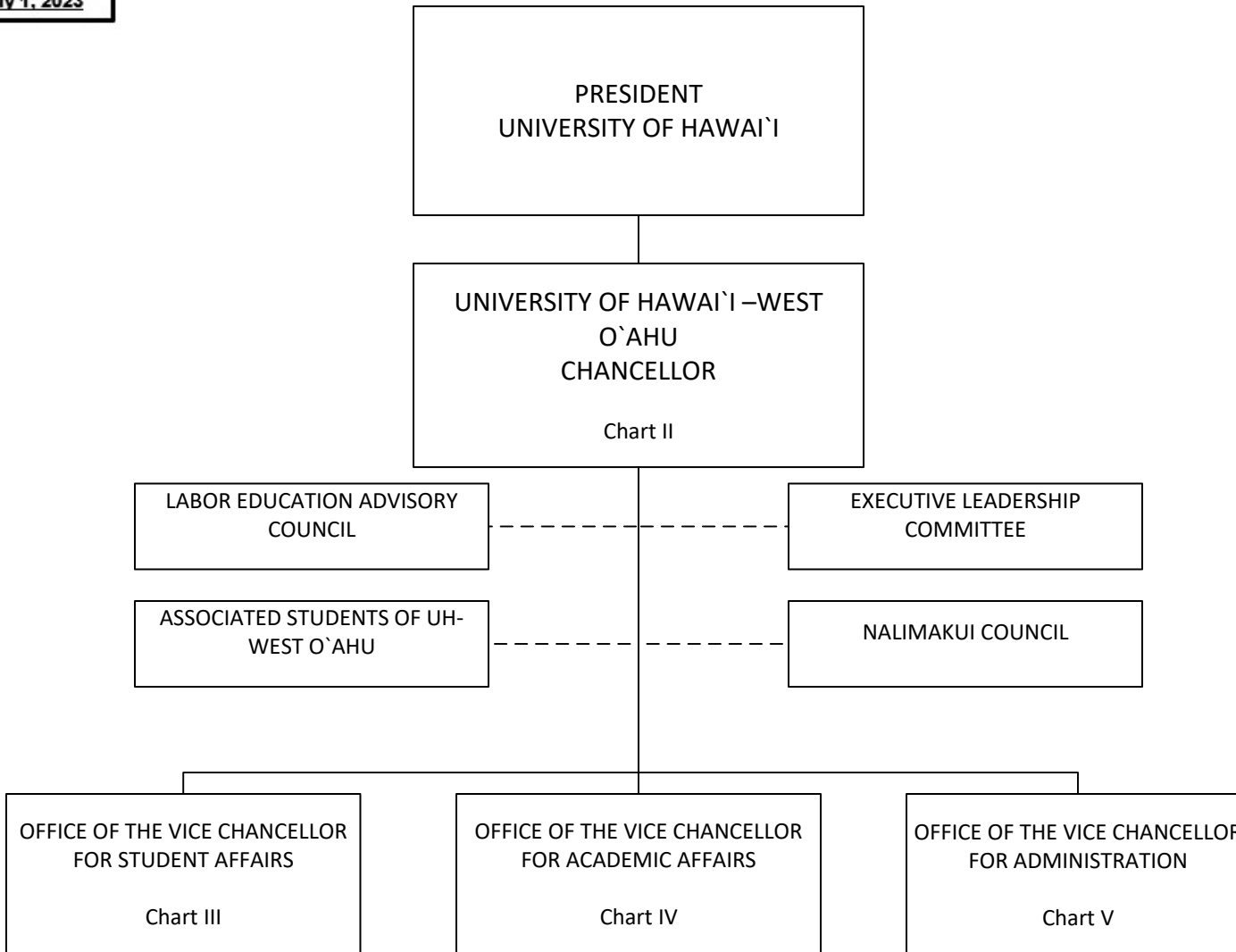


CHART UPDATED
DATE: July 1, 2023

STATE OF HAWAI`I
UNIVERSITY OF HAWAI`I
UNIVERSITY OF HAWAI`I – WEST O`AHU

POSITION ORGANIZATION CHART
CHART I

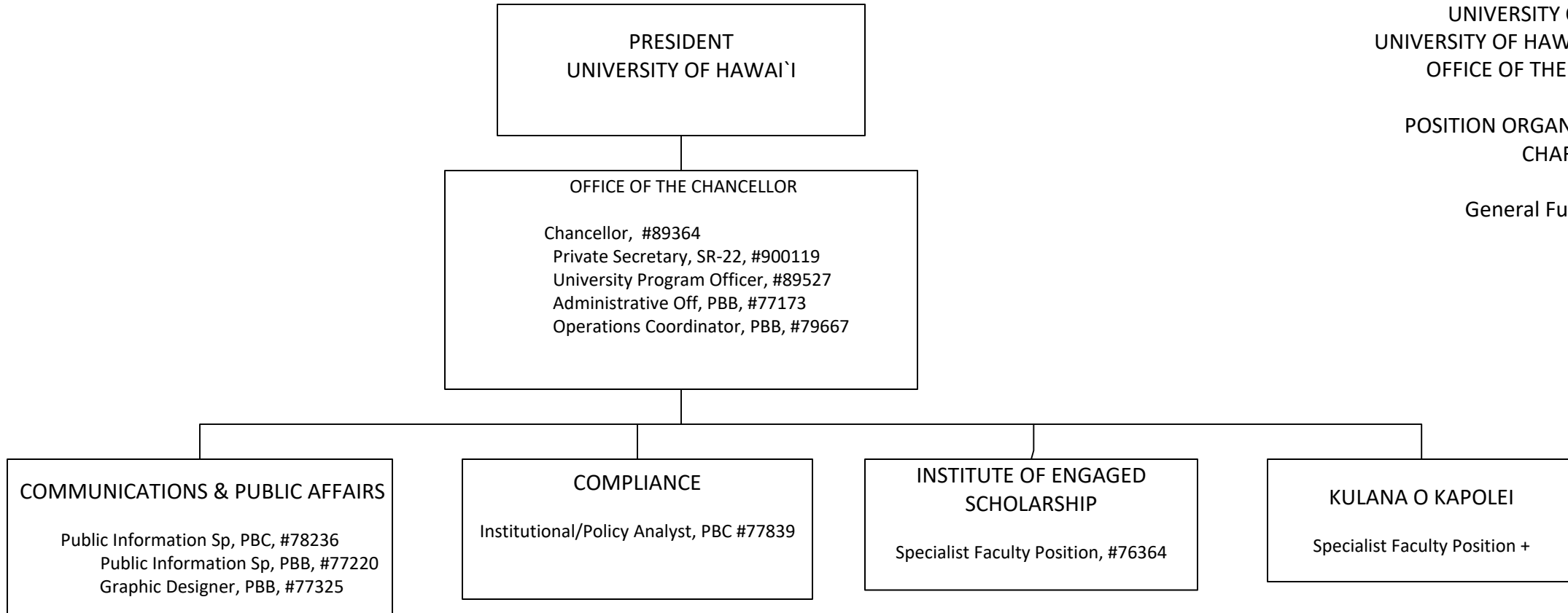


----- Dotted lines denotes advisory role

STATE OF HAWAI`I
UNIVERSITY OF HAWAI`I
UNIVERSITY OF HAWAI`I – WEST O`AHU
OFFICE OF THE CHANCELLOR

POSITION ORGANIZATION CHART
CHART II

General Funds 10.00



+ Position is not a permanent budgeted position

CHART UPDATED
DATE: July 1, 2023

OFFICE OF THE VICE CHANCELLOR FOR STUDENT AFFAIRS

Vice Chancellor, #89292
Instruc & Student Sup Sp, PBA, #78484

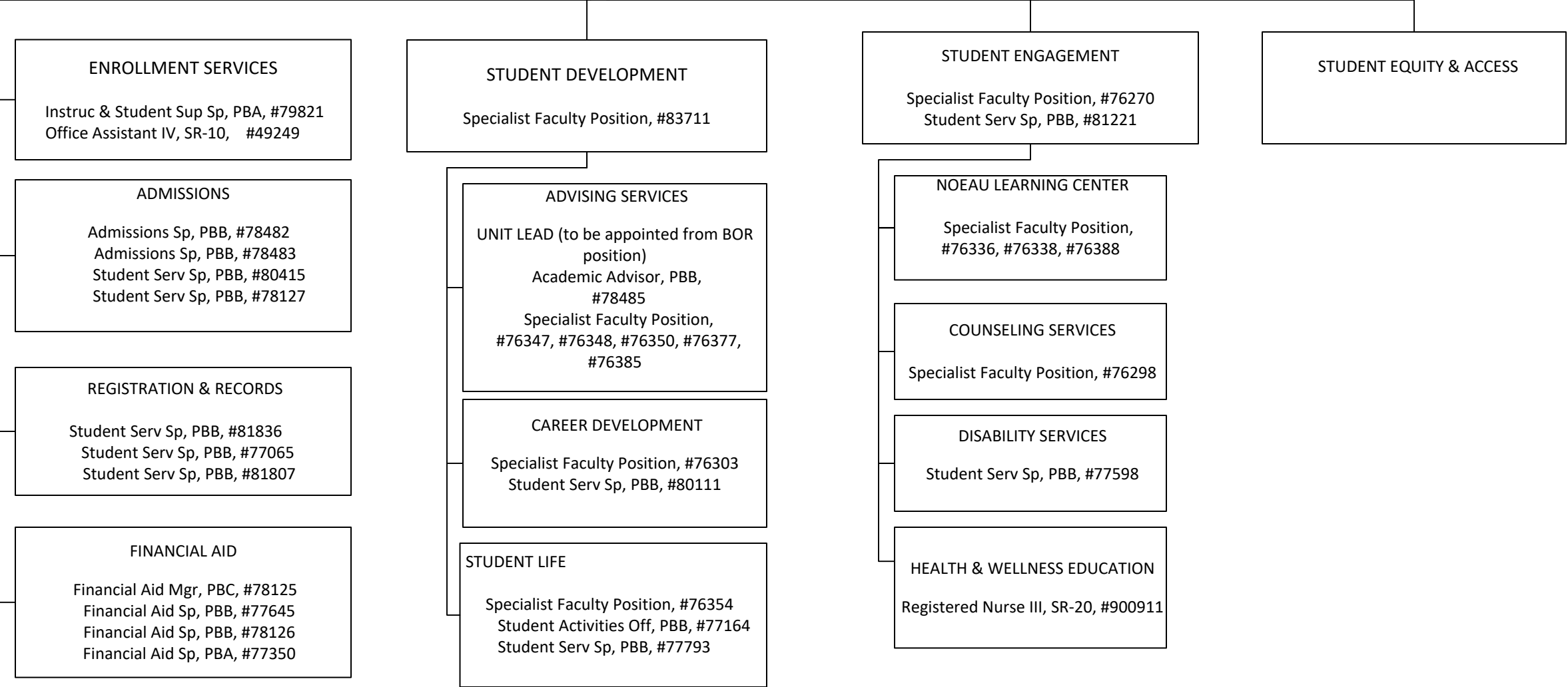
STATE OF HAWAI'I
UNIVERSITY OF HAWAI'I
UNIVERSITY OF HAWAI'I – WEST O`AHU
OFFICE OF THE VICE CHANCELLOR FOR STUDENT
AFFAIRS

POSITION ORGANIZATION CHART
CHART III

General Funds 37.00

DIVISIONAL & INSTITUTIONAL SUPPORT

UNIT LEAD (to be appointed from BOR
position)
Student Serv Sp, PBB, #81144
Specialist Faculty Position, #76346



STATE OF HAWAI`I
UNIVERSITY OF HAWAI`I
UNIVERSITY OF HAWAI`I – WEST O`AHU
OFFICE OF THE VICE CHANCELLOR FOR
ACADEMIC AFFAIRS

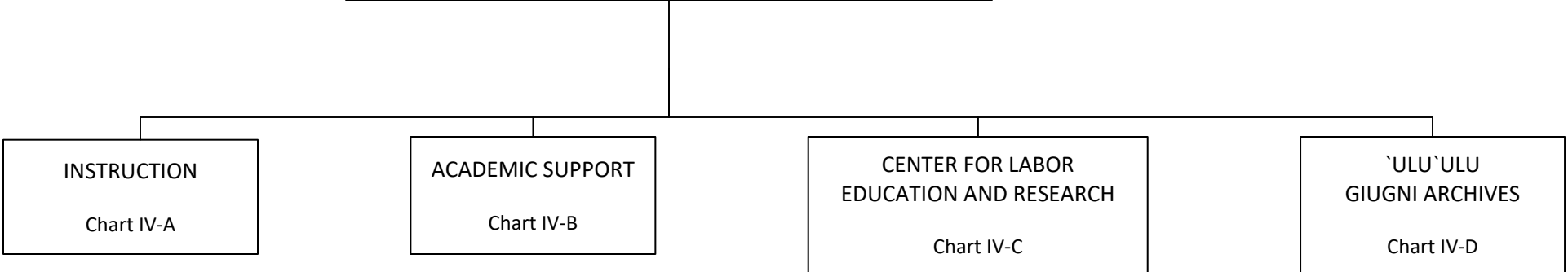
POSITION ORGANIZATION CHART
CHART IV

General Funds 12.50
**BT General Funds .50

OFFICE OF THE VICE CHANCELLOR FOR ACADEMIC AFFAIRS

- Vice Chancellor, #89449
- Associate Vice Chancellor, #89494
- Faculty Specialist Position, #88834
- Secretary III, SR-16, #50001
- Academic Support, PBB, #77584
- Educational Assoc, PBB, #81024
- Academic Support, PBB #79846
- Program Spec, PBB, #81693
- Administrative Off, PBB, #81299
- Admin & Fiscal Supp Sp, PBA, #77363
- Operations Coordinator PBB, #80647
- Admin & Fiscal Supp Sp, PBA, #79791 (.50)
- Admin & Fiscal Supp Sp, PBA, #81808T** (.50)
- Office Assistant IV, SR-10, #900625

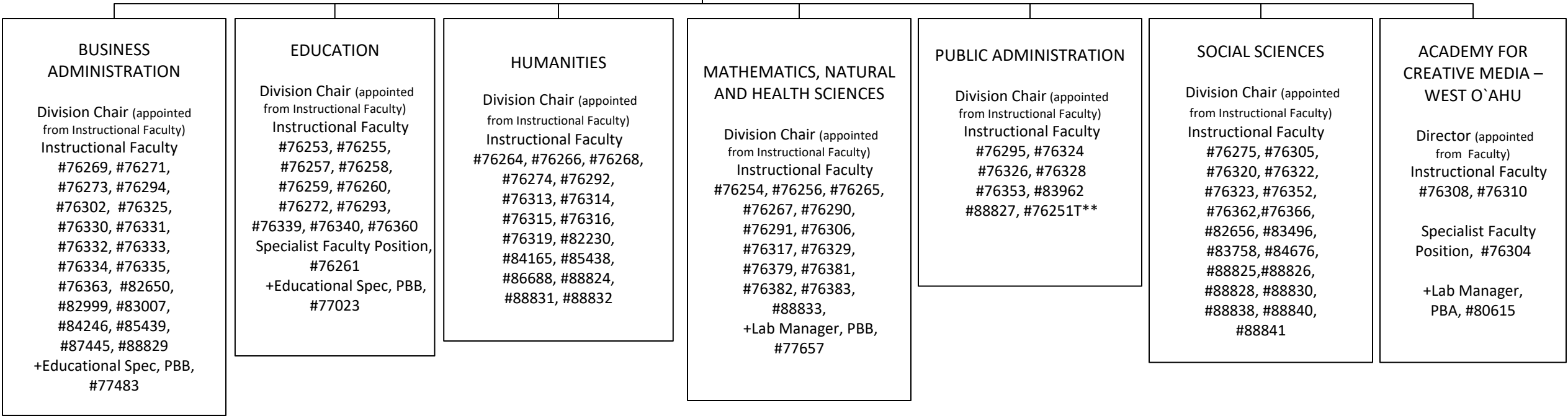
1/



**Budgeted temporary position .50 FTE

1/ Associate Vice Chancellor, #89494 in OVCAA also services as Director of Academic Support

INSTRUCTION
 *Vice Chancellor, #89449



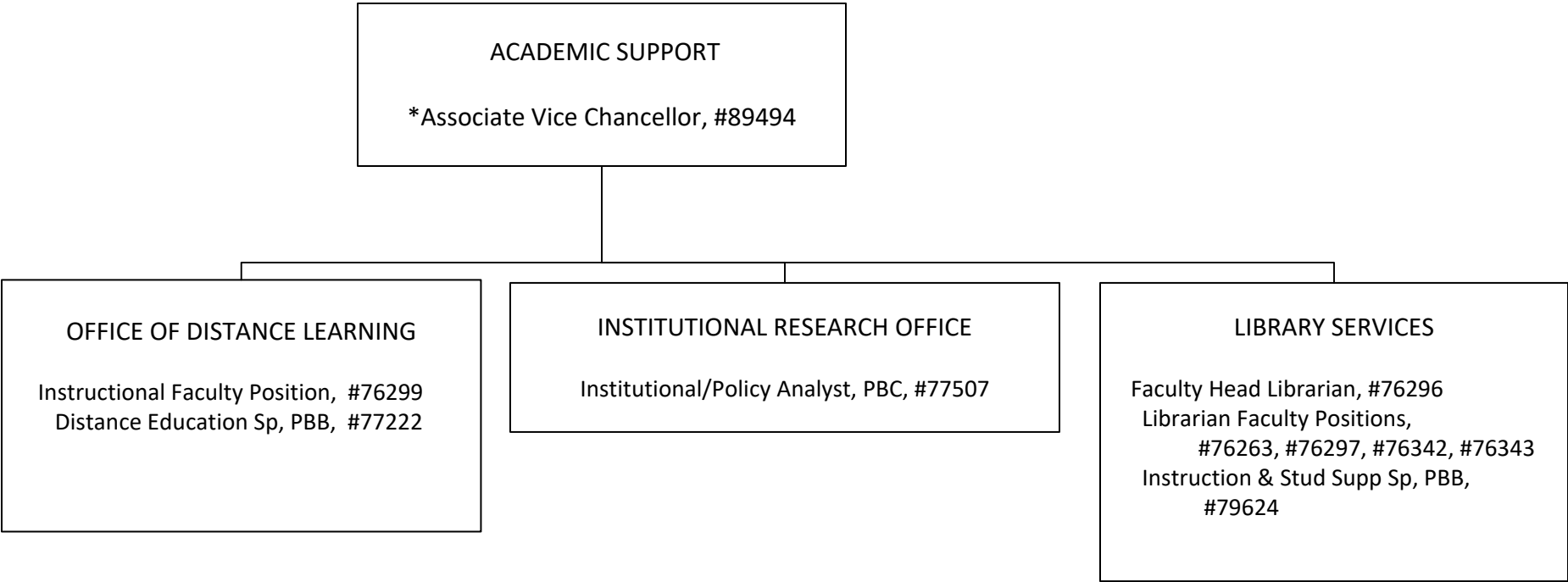
*Position count not included on this page

+ Reports to Division Chair, Director, or assigned Department Coordinator

STATE OF HAWAI`I
UNIVERSITY OF HAWAI`I
UNIVERSITY OF HAWAI`I – WEST O`AHU
OFFICE OF THE VICE CHANCELLOR FOR
ACADEMIC AFFAIRS
ACADEMIC SUPPORT

POSITION ORGANIZATION CHART
CHART IV-B

General Funds 9.00



1/

*Position count not included on this page

1/ #76296 filled with temporary librarian, Interim Head Librarian appointed from librarian faculty position

OFFICE OF THE CHANCELLOR FOR ACADEMIC AFFAIRS

*Vice Chancellor, #89449

CENTER FOR LABOR EDUCATION AND RESEARCH

Specialist Faculty Position and Director, #85401
Secretary II, SR-14, #14847
Specialist Faculty Position #85180, #85402
Instructional Faculty Position #85174

STATE OF HAWAI`I
UNIVERSITY OF HAWAI`I
UNIVERSITY OF HAWAI`I – WEST O`AHU
OFFICE OF THE VICE CHANCELLOR FOR
ACADEMIC AFFAIRS
CENTER FOR LABOR EDUCATION AND
RESEARCH

POSITION ORGANIZATION CHART
CHART IV-C

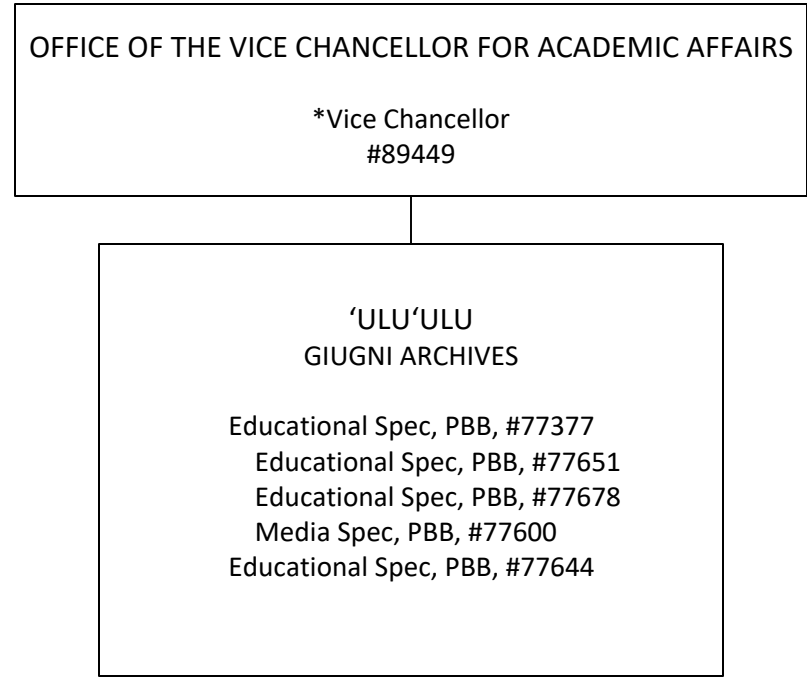
General Funds 5.00

*Position count not included on this page

STATE OF HAWAI`I
UNIVERSITY OF HAWAI`I
UNIVERSITY OF HAWAI`I – WEST O`AHU
OFFICE OF THE VICE CHANCELLOR FOR
ACADEMIC AFFAIRS
‘ULU‘ULU
GIUGNI ARCHIVES

POSITION ORGANIZATION CHART
CHART IV-D

General Funds 5.00



*Position count not included on this page

POSITION ORGANIZATION CHART
 CHART V

General Funds 38.00

OFFICE OF THE VICE CHANCELLOR FOR ADMINISTRATION
 Vice Chancellor, #89142
 Institutional/Policy Analyst, PBB, #77883

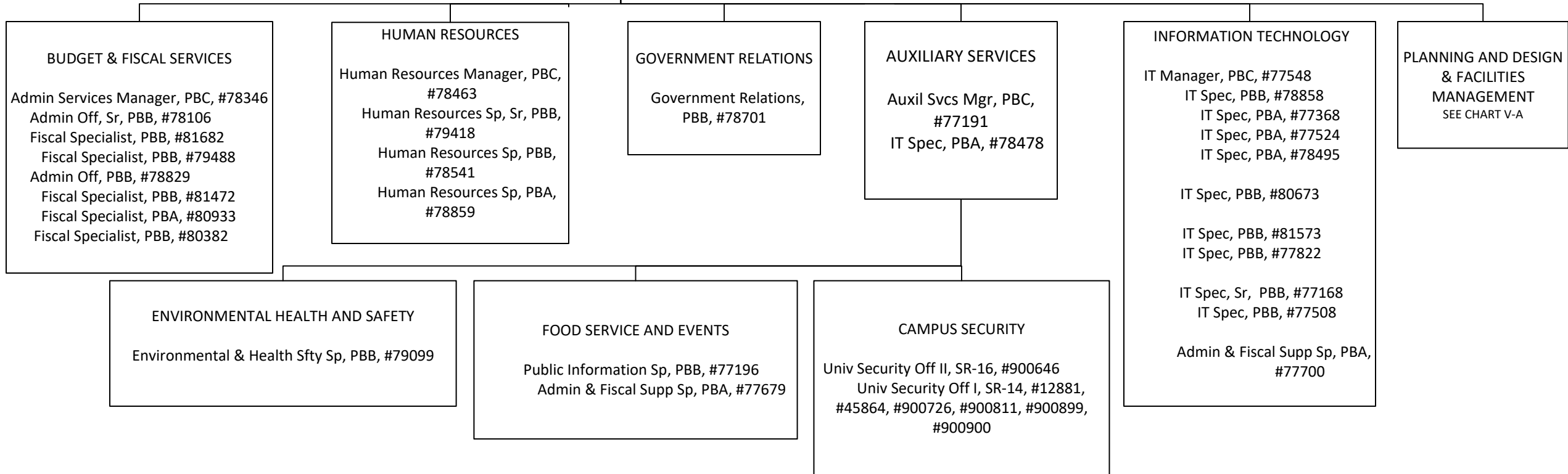
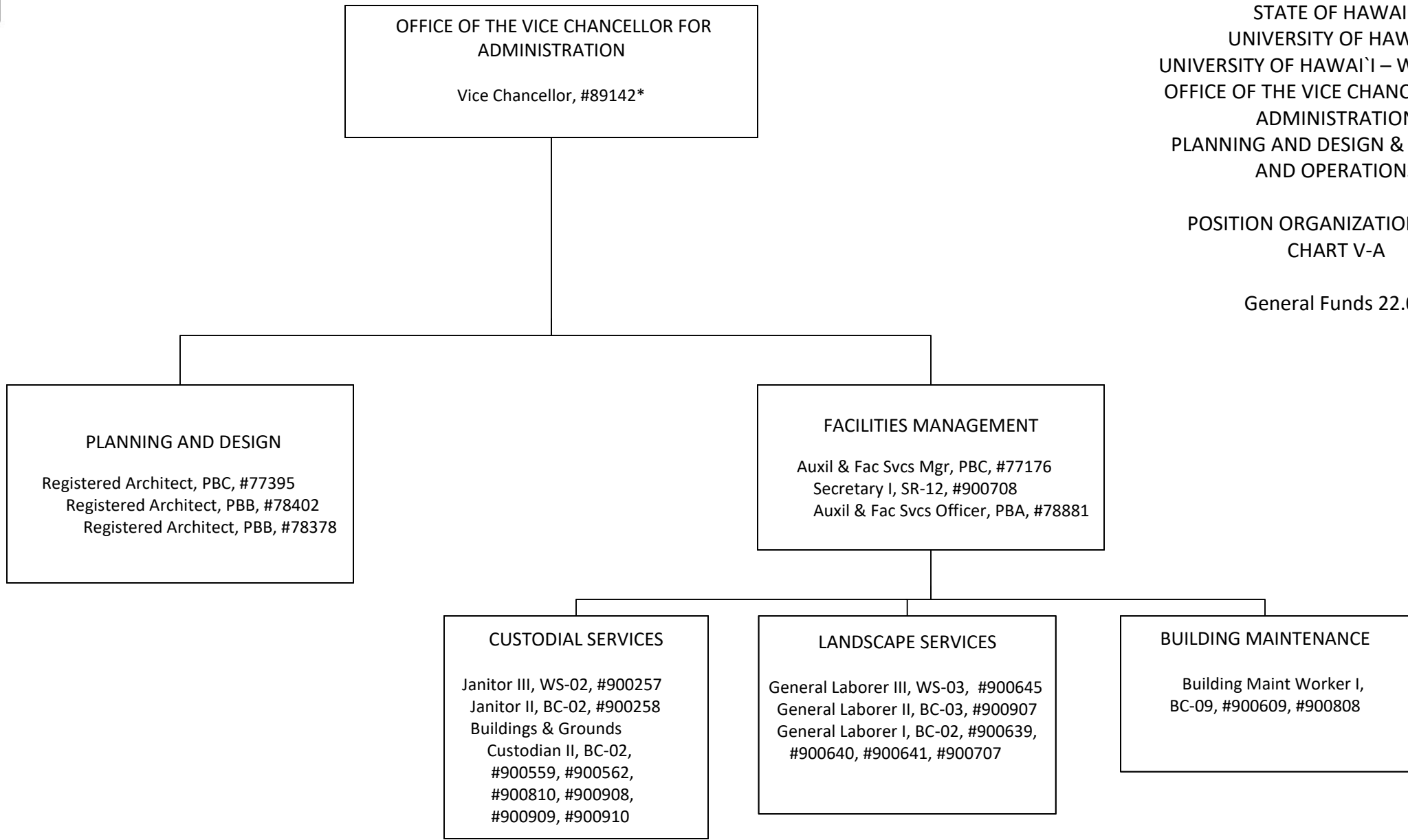


CHART UPDATED
DATE: July 1, 2023

STATE OF HAWAI'I
UNIVERSITY OF HAWAI'I
UNIVERSITY OF HAWAI'I – WEST O`AHU
OFFICE OF THE VICE CHANCELLOR FOR
ADMINISTRATION
PLANNING AND DESIGN & FACILITIES
AND OPERATIONS

POSITION ORGANIZATION CHART
CHART V-A

General Funds 22.00



* Position count not included on this page