

Interprofessional Practice Models

FOR OPIOID OVERDOSE PREVENTION

*Overdose Data to Action
Peer-to-Peer Learning
Coordinator*

OUR PANEL



Kimeona Kāne



Dr. Carol Titcomb



Keoki Baclayon



Dr. Mary Oneha



Dr. Noe Perreira



Leina'ala Bright

MAHALO

Behavioral Health & Homelessness
Statewide Unified Response Group
BHHSURG



SAMHSA
Substance Abuse and Mental Health
Services Administration



This webinar series is brought to you by the University of Hawai'i at Mānoa Myron B. Thompson School of Social Work and funded by the CDC Overdose Data to Action Project through the Hawai'i State Department of Health.



AGENDA

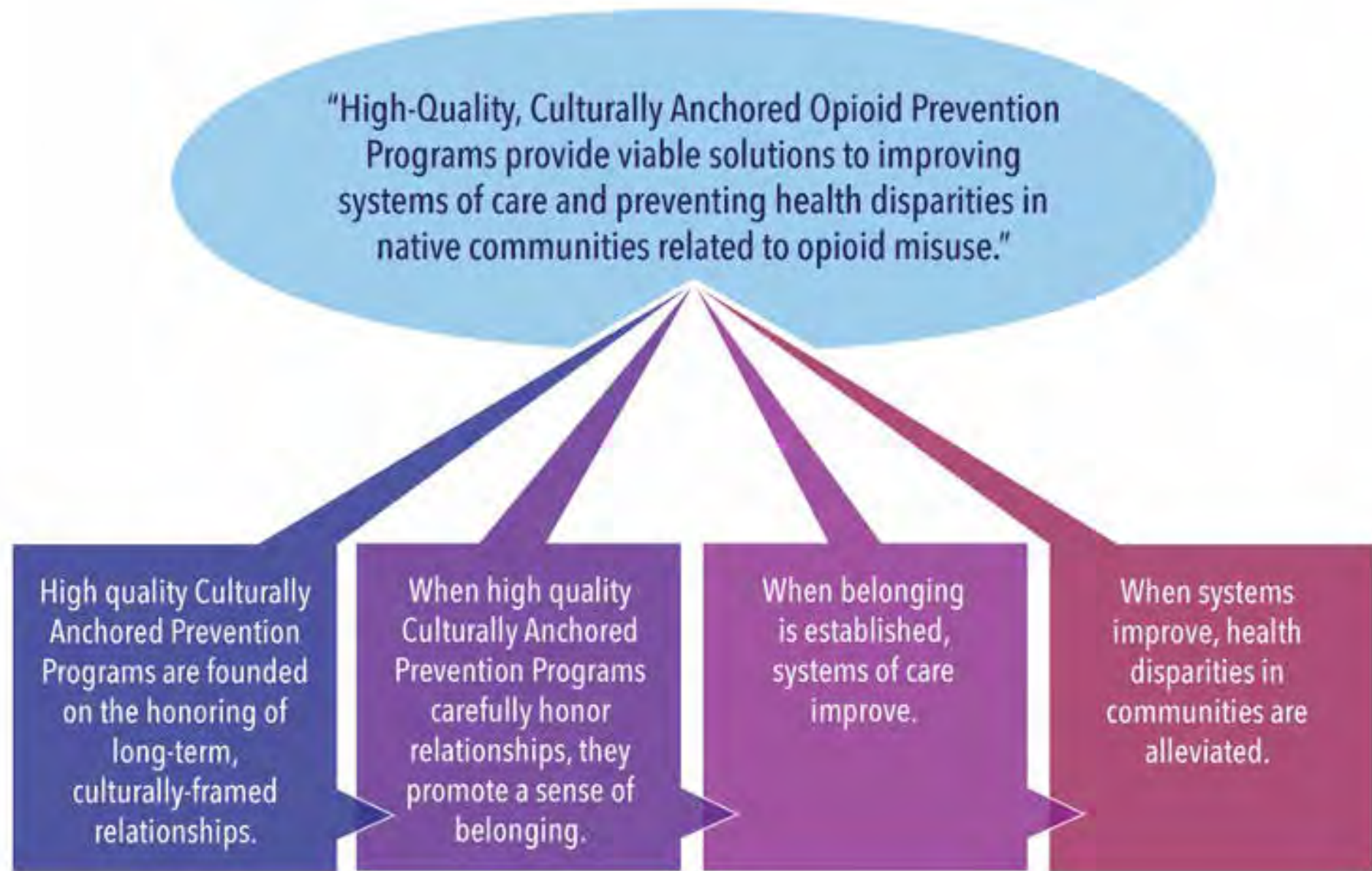
- INTRODUCTION
- FRAMEWORK
- HONORING PLACE:
WAIMĀNALO
- PEER TO PEER EXCHANGE
- MAHALO

Learning Objectives

- Define interprofessional practice models for opioid overdose prevention
- Describe the use of cultural anchoring in interprofessional practice models for vulnerable populations
- Share a success and challenge to using cultural anchoring in interprofessional practice models for vulnerable populations



Logic Model



HONOR PLACE

FOCUS ON SOCIAL
DETERMINANTS
OF HEALTH

LED BY
COMMUNITY

APPRECIATE ANCESTRAL
LANGUAGES & WISDOM

INVESTMENT, INTEGRITY,
AND INTENTIONALITY



Photo © Noa Spencer



KIMEONA KĀNE

© Noa Spencer

WAIMĀNALO



Waimānalo Evictions













WAIMĀNALO
HEALTH CENTER

OUR PANEL



Dr. Carol Titcomb



Keoki Baclayon



Dr. Mary Oneha



Dr. Noe Perreira



Leina'ala Bright



WELLNESS ECOSYSTEM

MAHALO

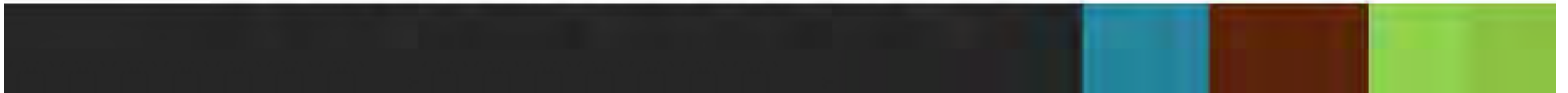
Behavioral Health & Homelessness
Statewide Unified Response Group
BHHSURG



SAMHSA
Substance Abuse and Mental Health
Services Administration



This webinar series is brought to you by the University of Hawai'i at Mānoa Myron B. Thompson School of Social Work and funded by the CDC Overdose Data to Action Project through the Hawai'i State Department of Health.



ALOHA

PO'E HAWAI'I

Ua lehulehu a manomano ka 'ikena a ka Hawai'i

PACIFIC HEALTH ANALYTICS COLLABORATIVE OVERDOSE DATA TO ACTION

Katherine Burke, MPH

Blane Benevedes, MA, MHRM

Sharde Freitas, Esq., MPH

Nai'a Lewis, BA

PHOTOS

Noa Spencer

Kimeona Kāne

Waimānalo Health Center

Hui Kū Maoli Ola, LLC

Adobe Stock





A HUI HOU!
Please join us for future webinars.

SPEAKER BIOS

Dr. Mary Frances Oneha, APRN, PhD, FAAN has worked in community health centers for 28 years and has served as the Chief Executive Officer of the Waimānalo Health Center since 2012. She received her PhD in Nursing from the University of Colorado Health Sciences Center, a Master of Nursing from the University of Washington, and a Bachelor of Science from the University of Hawaii. As a community based researcher, Dr. Oneha's commitment has been to improve the health of Native Hawaiians, and as a CEO, to ensure Native Hawaiian practices are available through primary care. Her collaborative research and publication efforts with other community minded researchers has aligned with this commitment. She serves on the Boards of the Association of Asian Pacific Community Organizations, AlohaCare, and the Hawai'i Primary Care Association. She is also a member of Na Limahana O Lonopuha Native Hawaiian Health Consortium

Kumu Keoki Kīkaha Pai Baclayon, MA is an instructor and practitioner of lā'au lapa'au (Hawaiian Medicine). His primary areas of teaching are spread between the five divisions of lā'au lapa'au knowledge—botany, pharmacology, medicine, horticulture, and ho'oponopono. He joined the faculty and staff of Kamakākūokalani Center for Hawaiian Studies at the UH-Mānoa campus in 2013, and as a lā'au lapa'au special instructor to Brigham Young University-Hawai'i in 2012.

Leina'ala Bright, MA, LMT joined the Waimānalo Health Center (WHC) `ohana in 2016. Her background in Hawaiian Studies and Agriculture as well as being a kumu lomilomi and loea lā'au lapa'au, give her a unique ability to effectively integrate Native Hawaiian healing techniques with modern medicine.

Dr. T. Noelani Perreira, PsyD was born on Oahu, raised, rooted and educated by Mauna Kea (ancestors), Makua (parents) and Kupuna (elders) at Makahanaloa (place) on Moku o Hawaii (the island of Hawaii). T. Noelani Perreira, Psy.D. considers herself a Hawaiian Psychologist committed to remembering the excellence from which we descend by engaging mauliola in all aspects of living. She joined the Waimanalo Health Center 'ohana in November 2014 as the Primary Care Psychologist with Maile Department (pediatric primary care). Since 2015, together with Carol Titcomb, MPH, M.D. and Leina'ala Bright, M.A., L.M.T. and our WHC 'ohana at-large, we began implementing care grounded in cultural practices not mutually exclusive of our clinical expertise and professional credentials.

Dr. Carol Titcomb, MD, MPH is a pediatrician at the Waimānalo Health Center, working together with psychologist Noelani Perreira and cultural practitioners Leina'ala Bright and Keoki Baclayon to offer an integrated model of primary care for children. Integrated care means that they sometimes pound ulu or kalo poi as the first food ma hope o ka waiū, they sometimes prepare salves with 'ōlena from their Native garden. They have the great privilege to be a part of a beloved community held in the embrace of the Ko'olau, warmed by ka puka'ana o ka lā, cooled by the Limulipu'upu'u wind, and nourished by the Nāulu rains.